

Data Path : Z:\pestpcbsrv\HPCHEM1\ECD_L\Data\PL032321\
 Data File : PL065512.D
 Signal(s) : Signal #1: ECD1A.ch Signal #2: ECD2B.ch
 Acq On : 23 Mar 2021 18:33
 Operator : AR\AJ
 Sample : M1768-01
 Misc :
 ALS Vial : 32 Sample Multiplier: 1

Instrument :
 ECD_L
 ClientSampleId :

Integration File signal 1: autoint1.e
 Integration File signal 2: autoint2.e
 Quant Time: Mar 24 04:16:31 2021
 Quant Method : Z:\pestpcbsrv\HPCHEM1\ECD_L\methods\PL031821.M
 Quant Title : GC Extractables
 QLast Update : Fri Mar 19 02:14:11 2021
 Response via : Initial Calibration
 Integrator: ChemStation

Volume Inj. : 1 µl
 Signal #1 Phase : ZB-MR2 Signal #2 Phase: ZB-MR1
 Signal #1 Info : 30M x 0.32mm x0.2 Signal #2 Info : 30M x 0.32mm x0.5µm

	Compound	RT#1	RT#2	Resp#1	Resp#2	ng/ml	ng/ml

System Monitoring Compounds							
1)	SA Tetrachlo...	3.286	3.785	31114732	33017686	13.102	12.029
28)	SA Decachlor...	7.926	8.733	29199354	27646514	12.086	13.948
Target Compounds							
2)	A alpha-BHC	0.000	4.168	0	713341	N.D.	0.176 #
3)	MA gamma-BHC...	0.000	4.462	0	292108	N.D.	0.080 #
4)	MA Heptachlor	4.268	4.936	2747635	3333775	0.840	1.000
5)	MB Aldrin	0.000	5.212f	0	14668045	N.D.	4.479 #
6)	B beta-BHC	4.245	4.636	370353	3727799	0.262	2.164 #
7)	B delta-BHC	4.422	4.860f	744362	865159	0.224	0.290 #
8)	Heptachlo...	4.943	5.632	1544576	21062656	0.522	7.286 #
9)	A Endosulfan I	5.276	5.998f	1152277	22733099	0.423	8.635 #
10)	B gamma-Chl...	5.160	5.848	20906960	35042797	7.081	12.557 #
11)	B alpha-Chl...	5.215	5.919	38787562	64237561	13.329	23.145 #
12)	B 4,4'-DDE	5.381	6.081	12923092	12121119	4.911	4.866
14)	MA Endrin	5.760	6.471f	253780	-57790	0.102	N.D. #
15)	B Endosulfa...	6.027	0.000	16864557	0	6.884	N.D. #
16)	A 4,4'-DDD	5.886	6.572	3127778	5271749	1.415	2.397 #
17)	MA 4,4'-DDT	6.120	6.865	5275536	3811349	2.787	1.942 #
18)	B Endrin al...	6.216f	0.000	1199913	0	0.625	N.D. #
19)	B Endosulfa...	0.000	6.986f	0	621647	N.D.	0.283 #
21)	B Endrin ke...	0.000	7.502f	0	502827	N.D.	0.213 #
23)	Chlordane-1	4.121	4.749	13646001	11267873	158.399	99.901 #
24)	Chlordane-2	4.609	5.212	15072611	14668045	138.968	134.677
25)	Chlordane-3	5.160	5.848	20906960	35042797	70.070	85.968
26)	Chlordane-4	5.215	5.919	38787562	64237561	142.374	133.530
27)	Chlordane-5	6.027	6.716	16864557	16558944	168.684	206.939

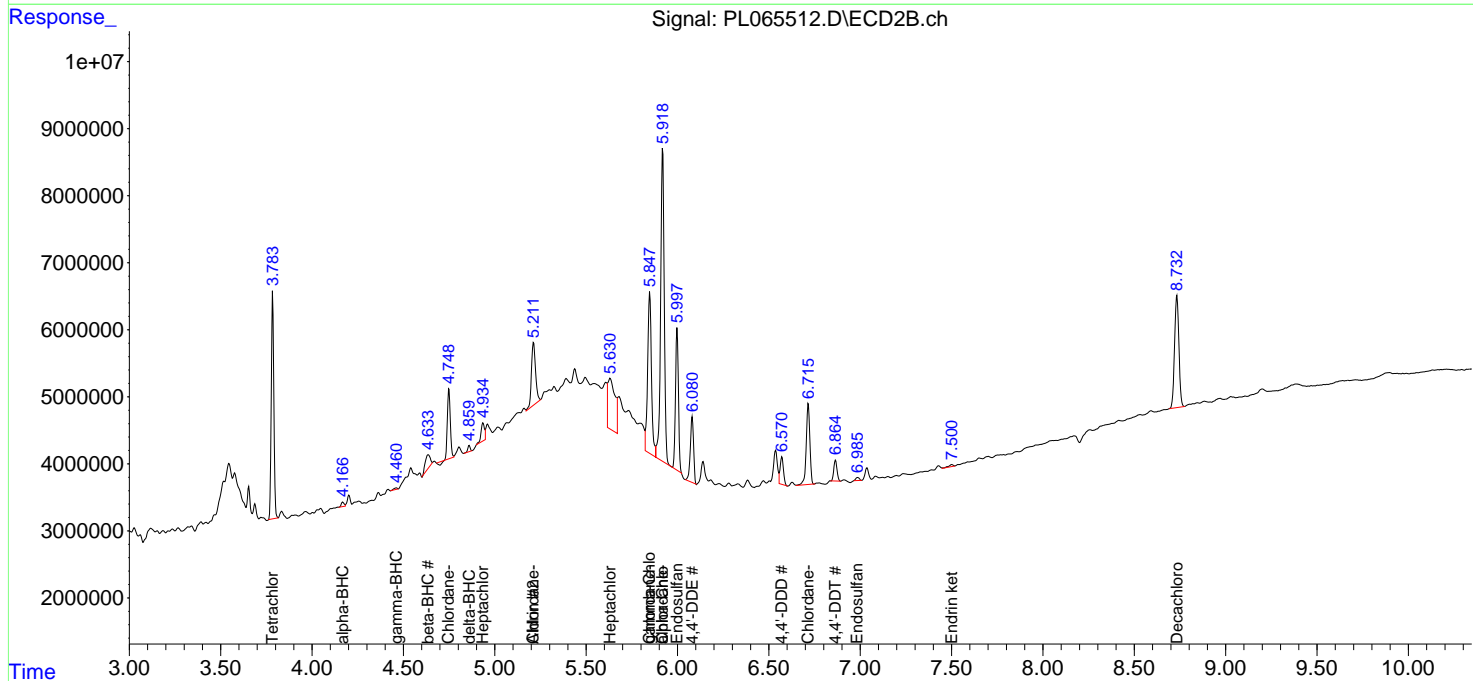
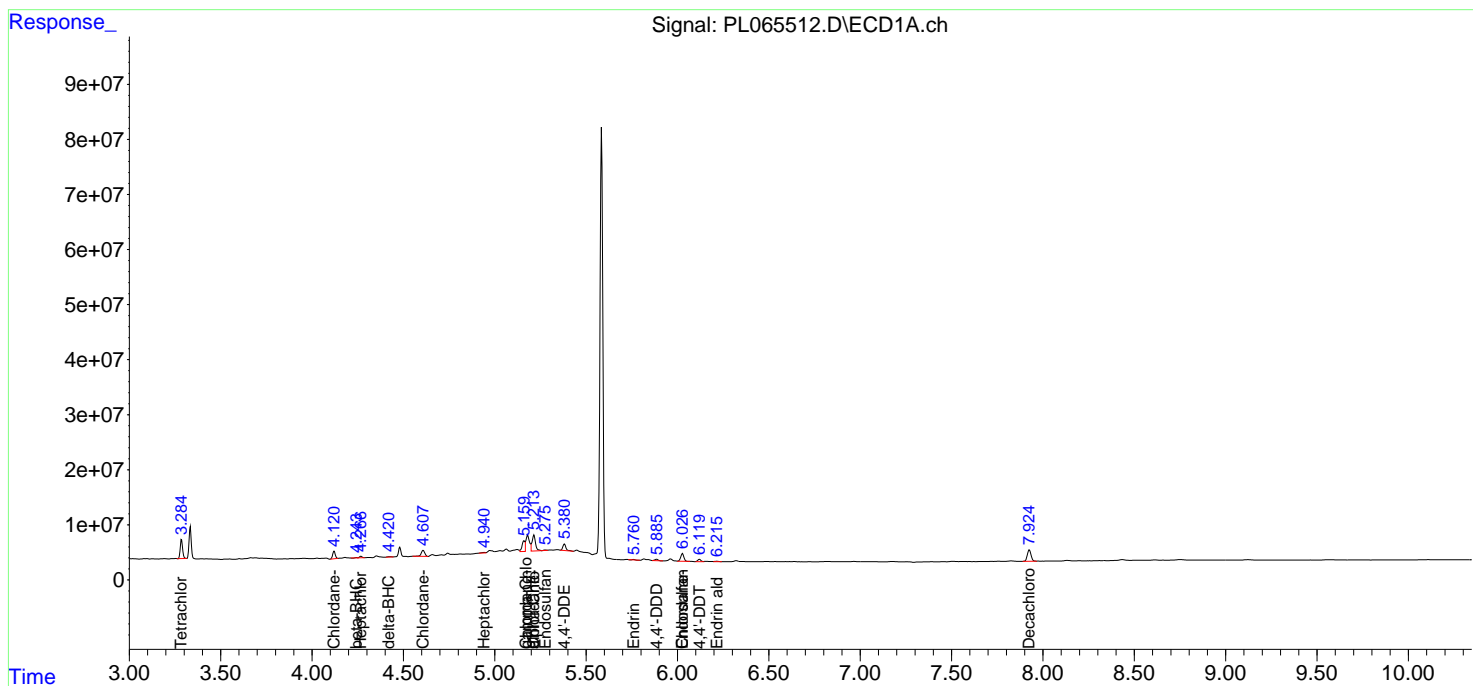
(f)=RT Delta > 1/2 Window (#)=Amounts differ by > 25% (m)=manual int.

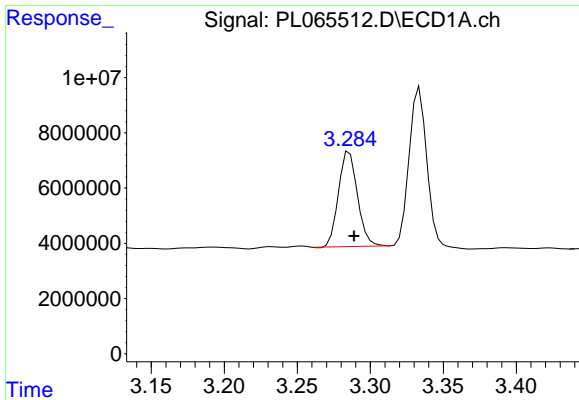
Data Path : Z:\pestpcbsrv\HPCHEM1\ECD_L\Data\PL032321\
 Data File : PL065512.D
 Signal(s) : Signal #1: ECD1A.ch Signal #2: ECD2B.ch
 Acq On : 23 Mar 2021 18:33
 Operator : AR\AJ
 Sample : M1768-01
 Misc :
 ALS Vial : 32 Sample Multiplier: 1

Instrument :
 ECD_L
 ClientSampled :

Integration File signal 1: autoint1.e
 Integration File signal 2: autoint2.e
 Quant Time: Mar 24 04:16:31 2021
 Quant Method : Z:\pestpcbsrv\HPCHEM1\ECD_L\methods\PL031821.M
 Quant Title : GC Extractables
 QLast Update : Fri Mar 19 02:14:11 2021
 Response via : Initial Calibration
 Integrator: ChemStation

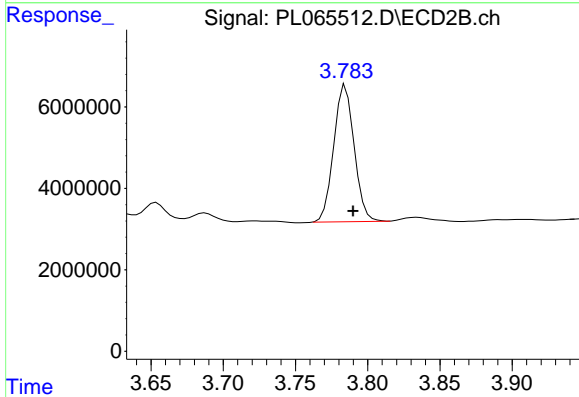
Volume Inj. : 1 µl
 Signal #1 Phase : ZB-MR2 Signal #2 Phase: ZB-MR1
 Signal #1 Info : 30M x 0.32mm x0.2 Signal #2 Info : 30M x 0.32mm x0.5µm



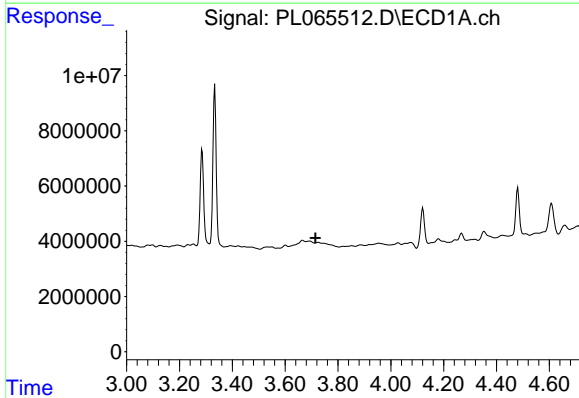


#1 Tetrachloro-m-xylene
 R.T.: 3.286 min
 Delta R.T.: -0.003 min
 Response: 31114732
 Conc: 13.10 ng/ml

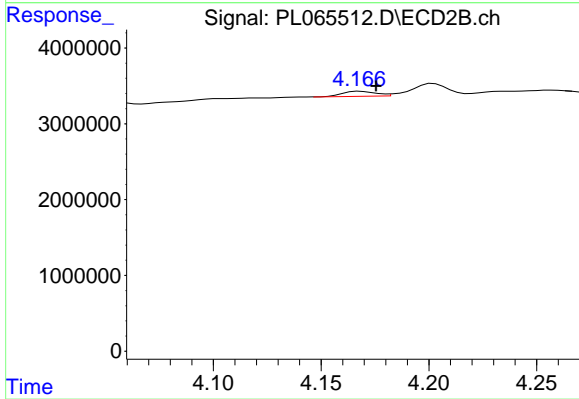
Instrument :
 ECD_L
 ClientSampleId :



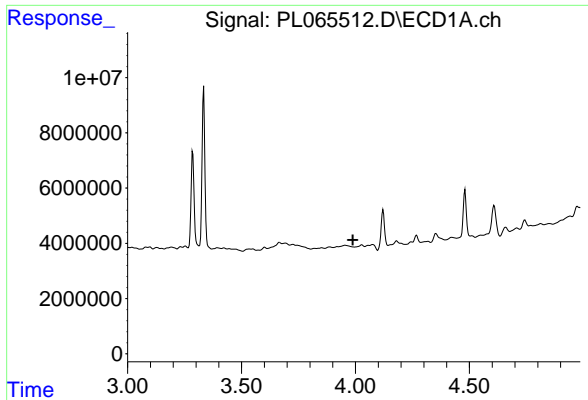
#1 Tetrachloro-m-xylene
 R.T.: 3.785 min
 Delta R.T.: -0.005 min
 Response: 33017686
 Conc: 12.03 ng/ml



#2 alpha-BHC
 R.T.: 0.000 min
 Exp R.T. : 3.714 min
 Response: 0
 Conc: N.D.

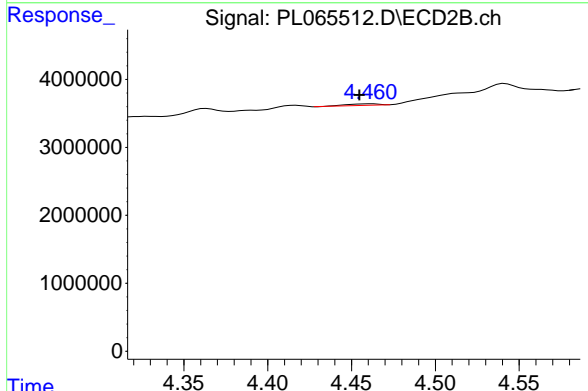


#2 alpha-BHC
 R.T.: 4.168 min
 Delta R.T.: -0.007 min
 Response: 713341
 Conc: 0.18 ng/ml

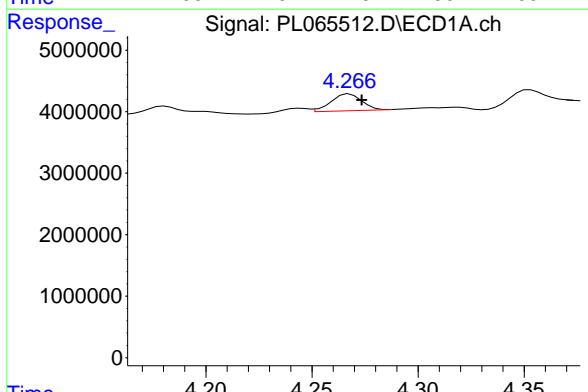


#3 gamma-BHC (Lindane)
 R.T.: 0.000 min
 Exp R.T.: 3.987 min
 Response: 0
 Conc: N.D.

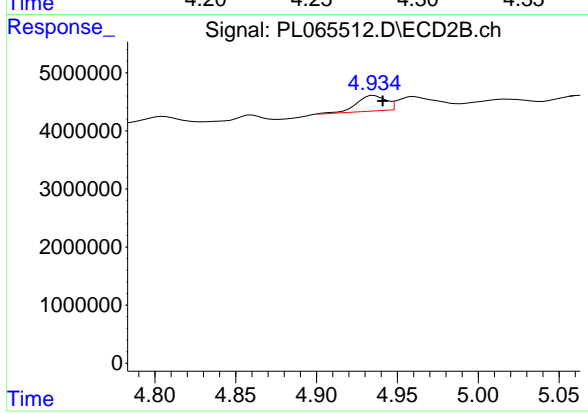
Instrument :
 ECD_L
 ClientSampled :



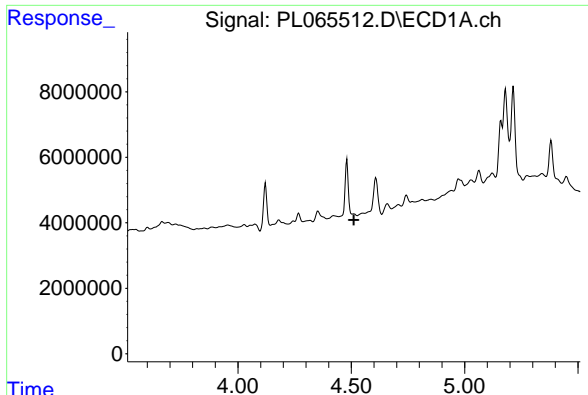
#3 gamma-BHC (Lindane)
 R.T.: 4.462 min
 Delta R.T.: 0.007 min
 Response: 292108
 Conc: 0.08 ng/ml



#4 Heptachlor
 R.T.: 4.268 min
 Delta R.T.: -0.006 min
 Response: 2747635
 Conc: 0.84 ng/ml

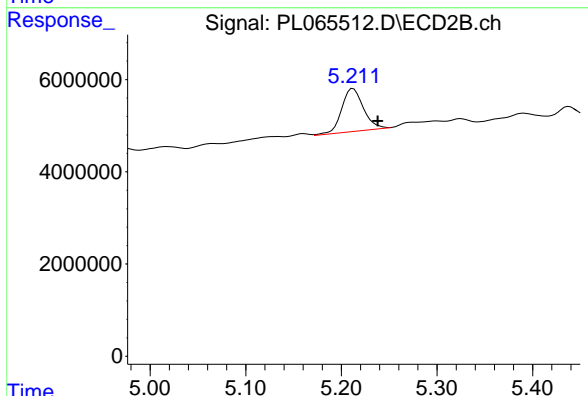


#4 Heptachlor
 R.T.: 4.936 min
 Delta R.T.: -0.005 min
 Response: 3333775
 Conc: 1.00 ng/ml

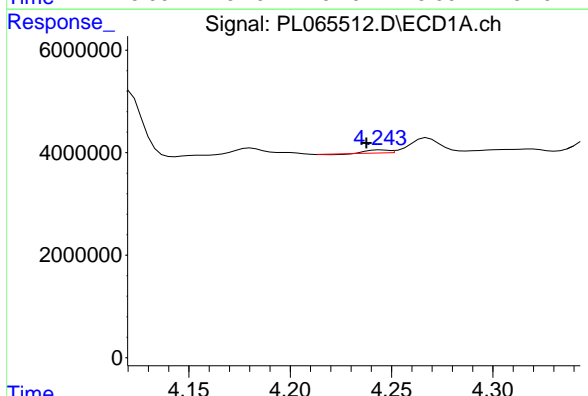


#5 Aldrin
 R.T.: 0.000 min
 Exp R.T.: 4.511 min
 Response: 0
 Conc: N.D.

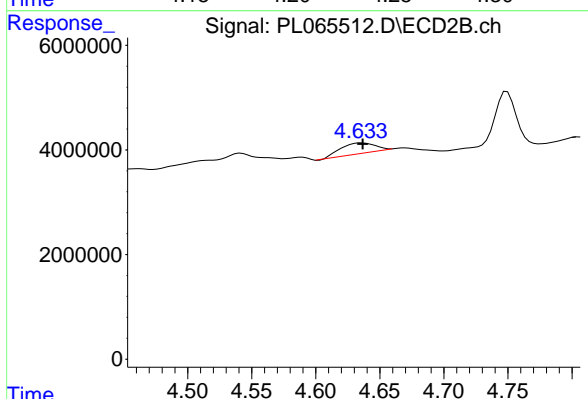
Instrument :
 ECD_L
 ClientSampled :



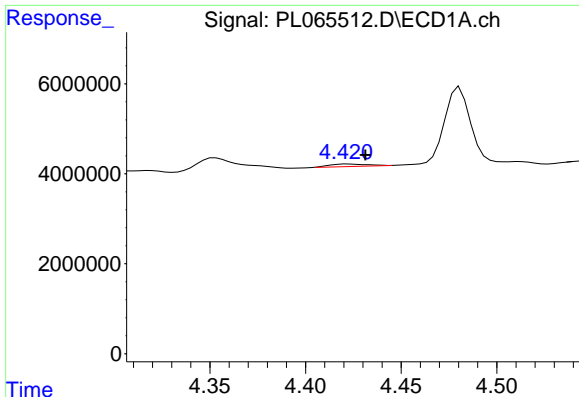
#5 Aldrin
 R.T.: 5.212 min
 Delta R.T.: -0.026 min
 Response: 14668045
 Conc: 4.48 ng/ml



#6 beta-BHC
 R.T.: 4.245 min
 Delta R.T.: 0.007 min
 Response: 370353
 Conc: 0.26 ng/ml

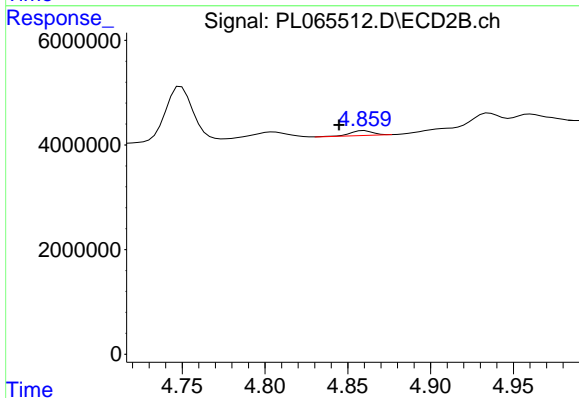


#6 beta-BHC
 R.T.: 4.636 min
 Delta R.T.: 0.000 min
 Response: 3727799
 Conc: 2.16 ng/ml

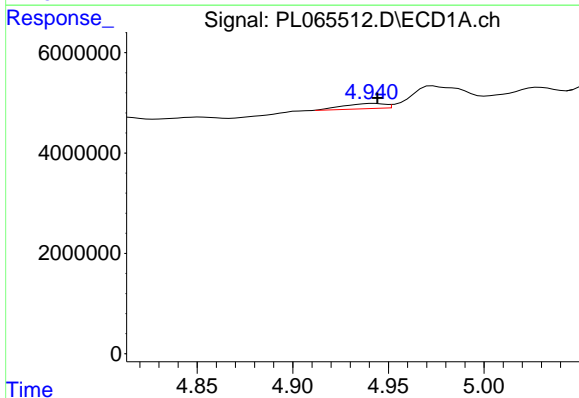


#7 delta-BHC
 R.T.: 4.422 min
 Delta R.T.: -0.009 min
 Response: 744362
 Conc: 0.22 ng/ml

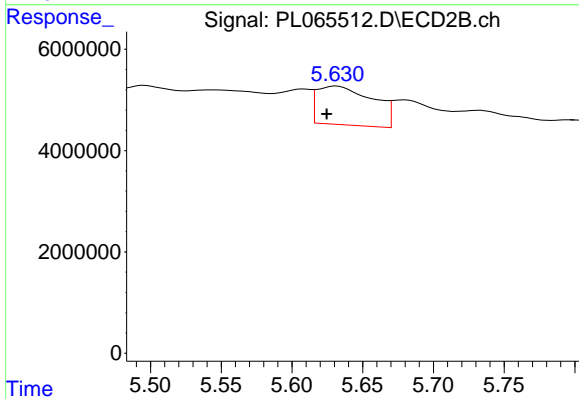
Instrument :
 ECD_L
 ClientSampled :



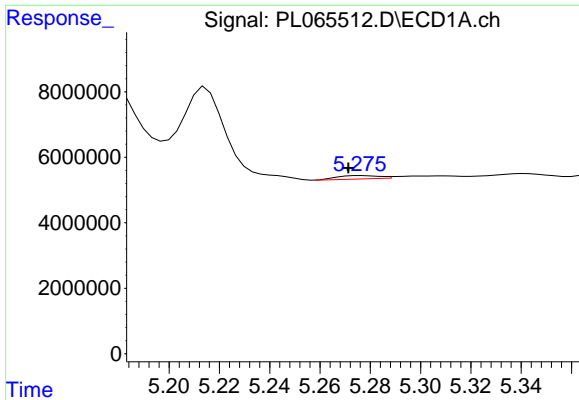
#7 delta-BHC
 R.T.: 4.860 min
 Delta R.T.: 0.015 min
 Response: 865159
 Conc: 0.29 ng/ml



#8 Heptachlor epoxide
 R.T.: 4.943 min
 Delta R.T.: -0.002 min
 Response: 1544576
 Conc: 0.52 ng/ml

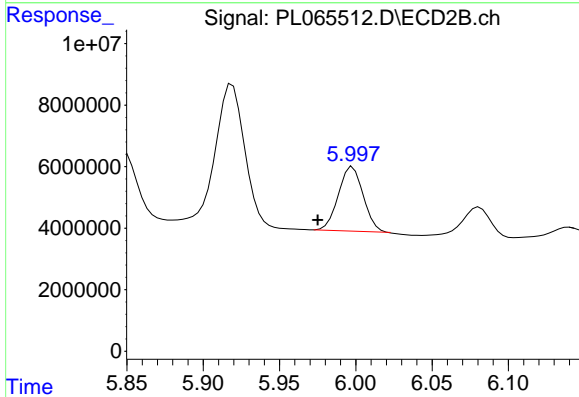


#8 Heptachlor epoxide
 R.T.: 5.632 min
 Delta R.T.: 0.007 min
 Response: 21062656
 Conc: 7.29 ng/ml

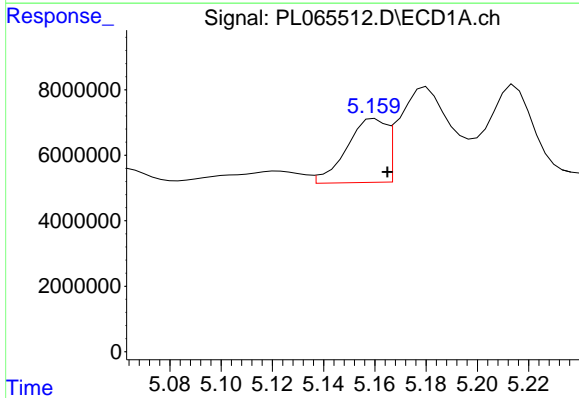


#9 Endosulfan I
 R.T.: 5.276 min
 Delta R.T.: 0.005 min
 Response: 1152277
 Conc: 0.42 ng/ml

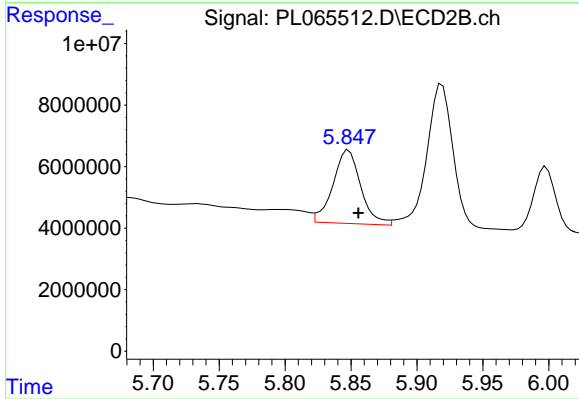
Instrument :
 ECD_L
 ClientSampled :



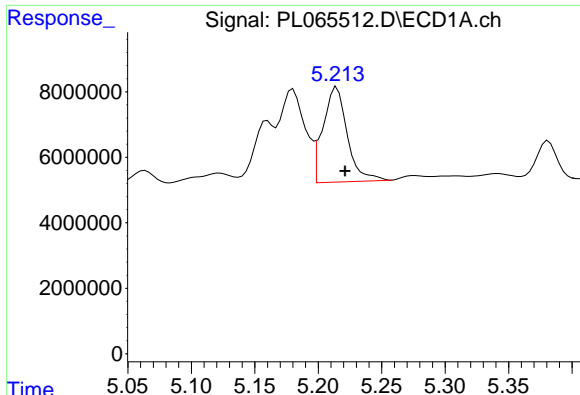
#9 Endosulfan I
 R.T.: 5.998 min
 Delta R.T.: 0.023 min
 Response: 22733099
 Conc: 8.63 ng/ml



#10 gamma-Chlordane
 R.T.: 5.160 min
 Delta R.T.: -0.005 min
 Response: 20906960
 Conc: 7.08 ng/ml

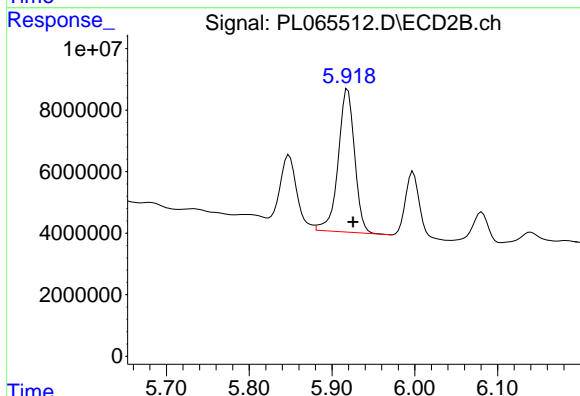


#10 gamma-Chlordane
 R.T.: 5.848 min
 Delta R.T.: -0.007 min
 Response: 35042797
 Conc: 12.56 ng/ml

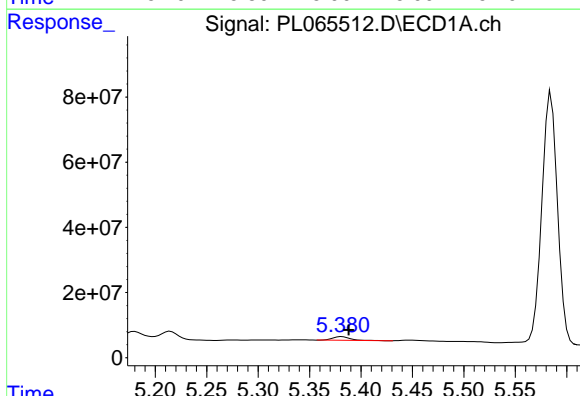


#11 alpha-Chlordane
 R.T.: 5.215 min
 Delta R.T.: -0.006 min
 Response: 38787562
 Conc: 13.33 ng/ml

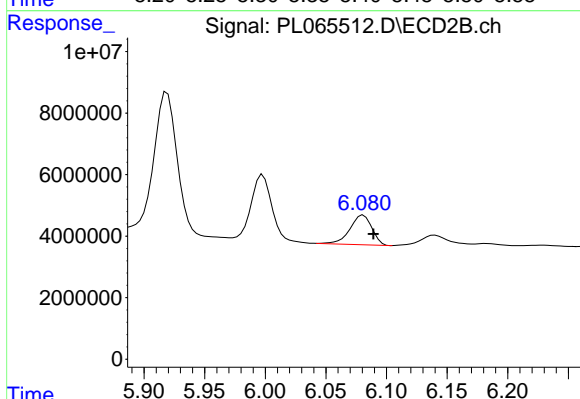
Instrument :
 ECD_L
 ClientSampleId :



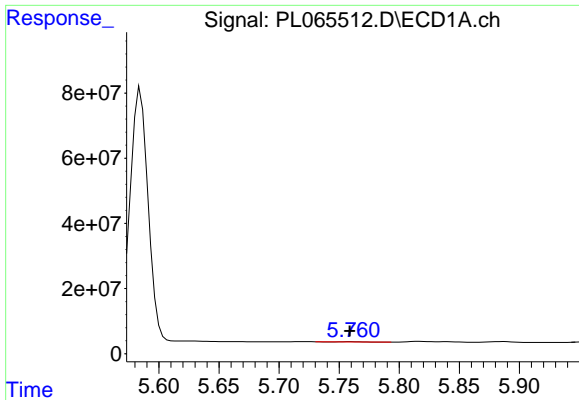
#11 alpha-Chlordane
 R.T.: 5.919 min
 Delta R.T.: -0.006 min
 Response: 64237561
 Conc: 23.15 ng/ml



#12 4,4'-DDE
 R.T.: 5.381 min
 Delta R.T.: -0.007 min
 Response: 12923092
 Conc: 4.91 ng/ml

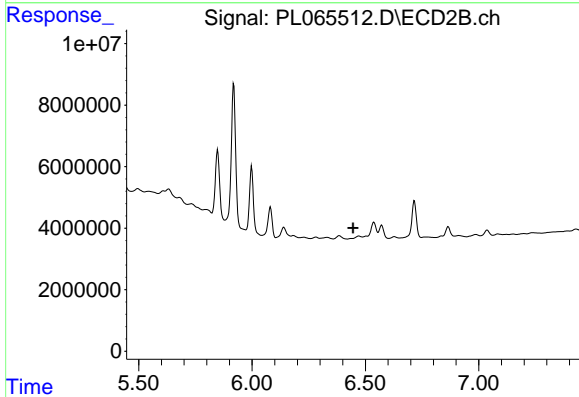


#12 4,4'-DDE
 R.T.: 6.081 min
 Delta R.T.: -0.008 min
 Response: 12121119
 Conc: 4.87 ng/ml

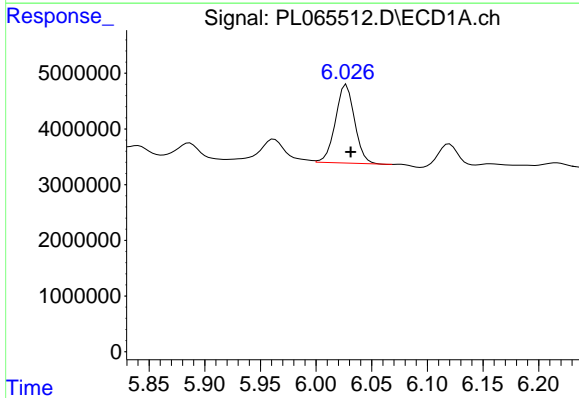


#14 Endrin
 R.T.: 5.760 min
 Delta R.T.: 0.001 min
 Response: 253780
 Conc: 0.10 ng/ml

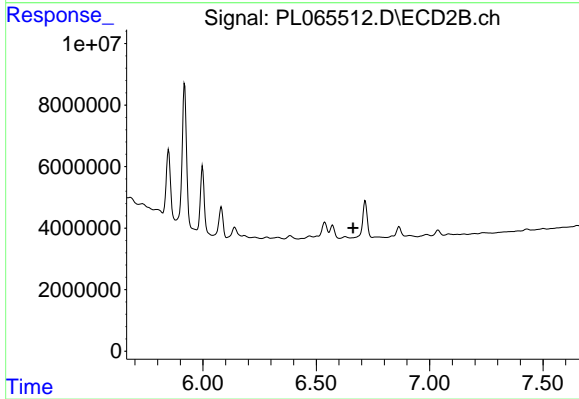
Instrument :
 ECD_L
 ClientSampled :



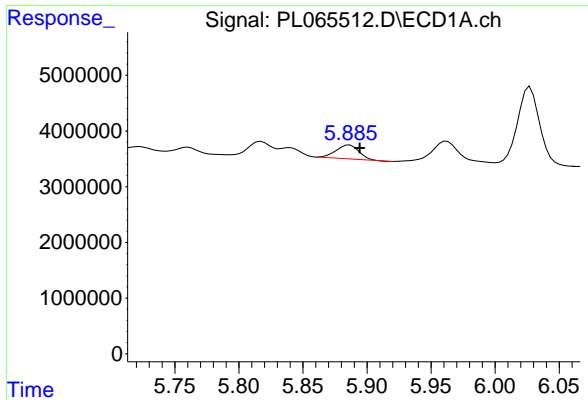
#14 Endrin
 R.T.: 6.471 min
 Delta R.T.: 0.024 min
 Response: -57790
 Conc: N.D.



#15 Endosulfan II
 R.T.: 6.027 min
 Delta R.T.: -0.004 min
 Response: 16864557
 Conc: 6.88 ng/ml

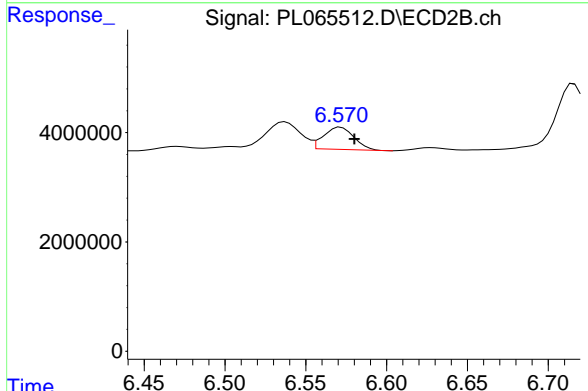


#15 Endosulfan II
 R.T.: 0.000 min
 Exp R.T. : 6.663 min
 Response: 0
 Conc: N.D.

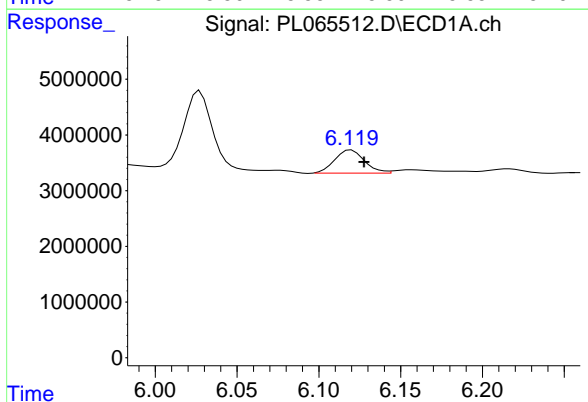


#16 4,4'-DDD
 R.T.: 5.886 min
 Delta R.T.: -0.008 min
 Response: 3127778
 Conc: 1.42 ng/ml

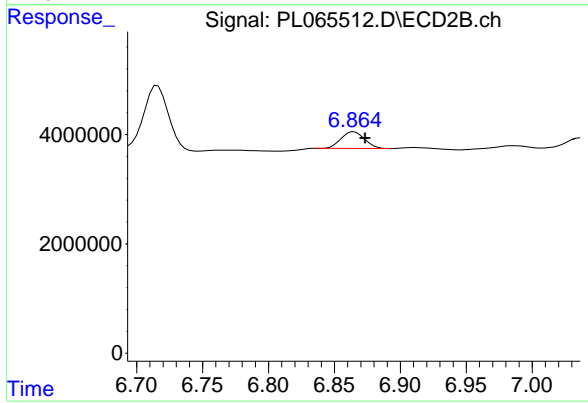
Instrument :
 ECD_L
 ClientSampled :



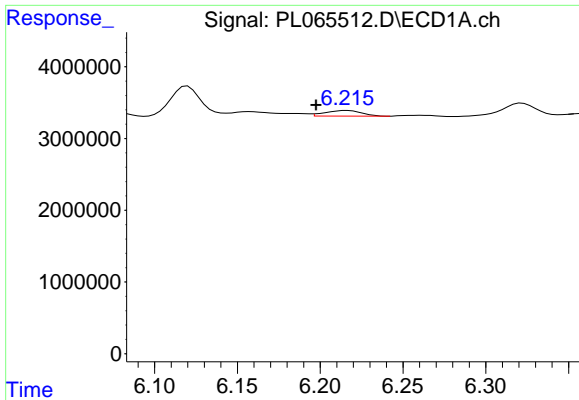
#16 4,4'-DDD
 R.T.: 6.572 min
 Delta R.T.: -0.009 min
 Response: 5271749
 Conc: 2.40 ng/ml



#17 4,4'-DDT
 R.T.: 6.120 min
 Delta R.T.: -0.008 min
 Response: 5275536
 Conc: 2.79 ng/ml

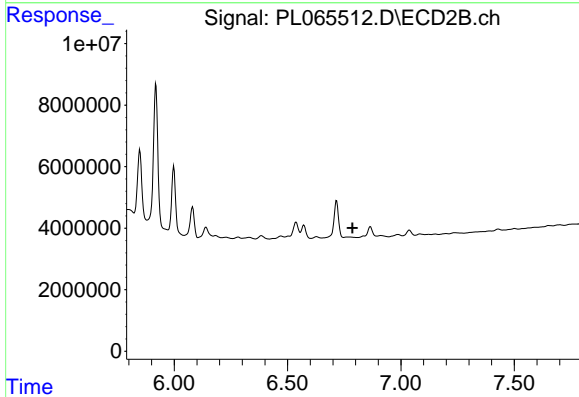


#17 4,4'-DDT
 R.T.: 6.865 min
 Delta R.T.: -0.008 min
 Response: 3811349
 Conc: 1.94 ng/ml

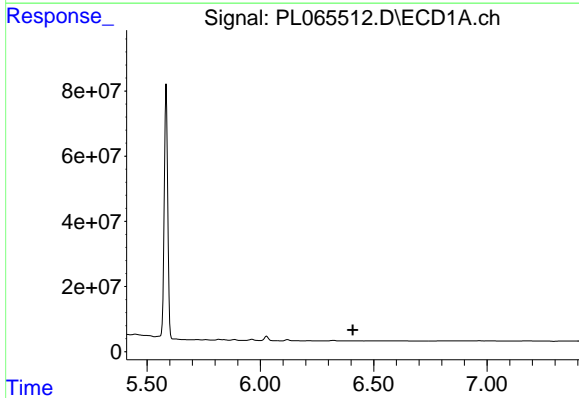


#18 Endrin aldehyde
 R.T.: 6.216 min
 Delta R.T.: 0.019 min
 Response: 1199913
 Conc: 0.62 ng/ml

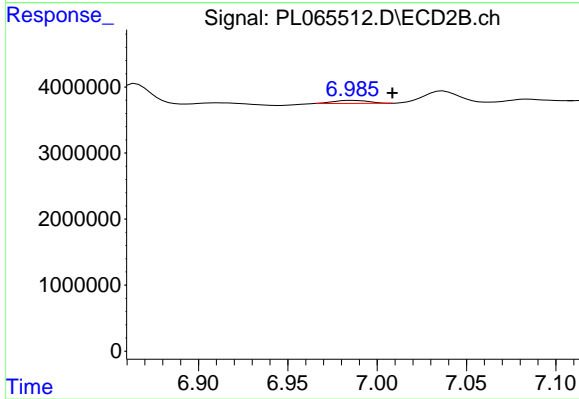
Instrument :
 ECD_L
 ClientSampled :



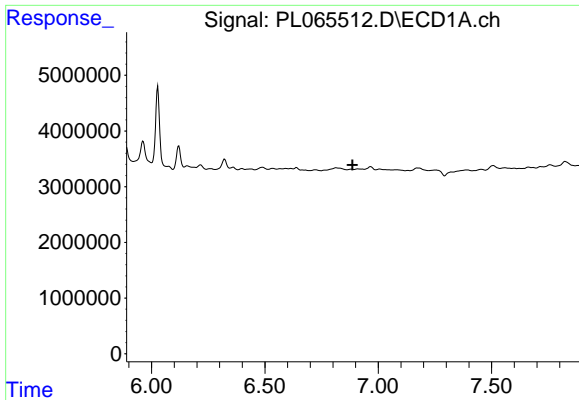
#18 Endrin aldehyde
 R.T.: 0.000 min
 Exp R.T. : 6.787 min
 Response: 0
 Conc: N.D.



#19 Endosulfan Sulfate
 R.T.: 0.000 min
 Exp R.T. : 6.408 min
 Response: 0
 Conc: N.D.



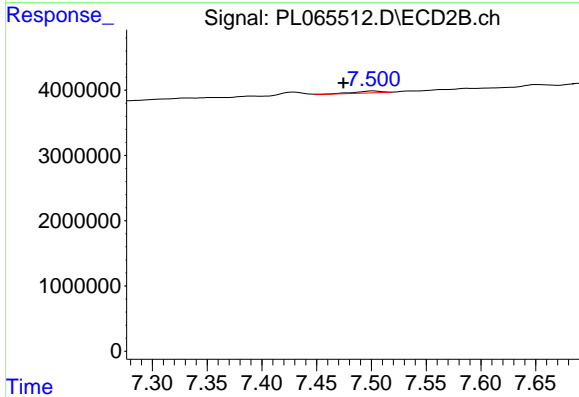
#19 Endosulfan Sulfate
 R.T.: 6.986 min
 Delta R.T.: -0.022 min
 Response: 621647
 Conc: 0.28 ng/ml



#21 Endrin ketone

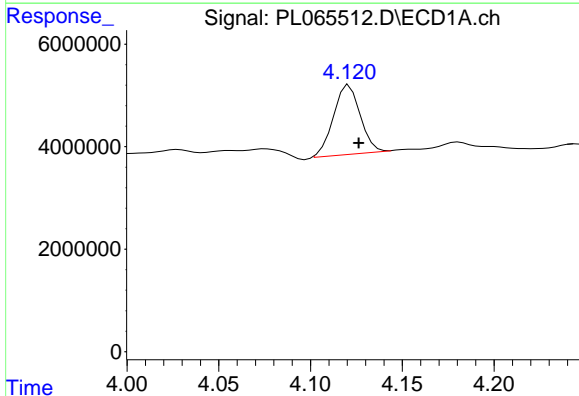
R.T.: 0.000 min
 Exp R.T.: 6.886 min
 Response: 0
 Conc: N.D.

Instrument :
 ECD_L
 ClientSampleId :



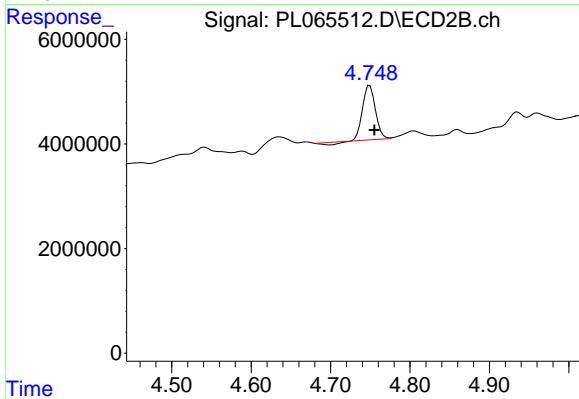
#21 Endrin ketone

R.T.: 7.502 min
 Delta R.T.: 0.027 min
 Response: 502827
 Conc: 0.21 ng/ml



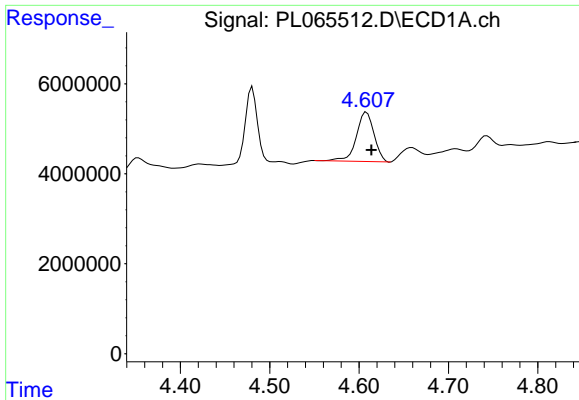
#23 Chlordane-1

R.T.: 4.121 min
 Delta R.T.: -0.005 min
 Response: 13646001
 Conc: 158.40 ng/ml



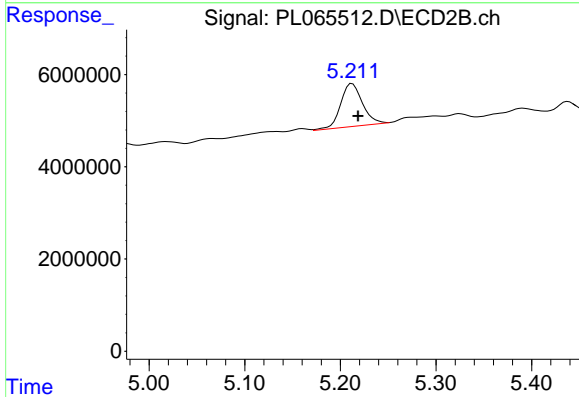
#23 Chlordane-1

R.T.: 4.749 min
 Delta R.T.: -0.006 min
 Response: 11267873
 Conc: 99.90 ng/ml

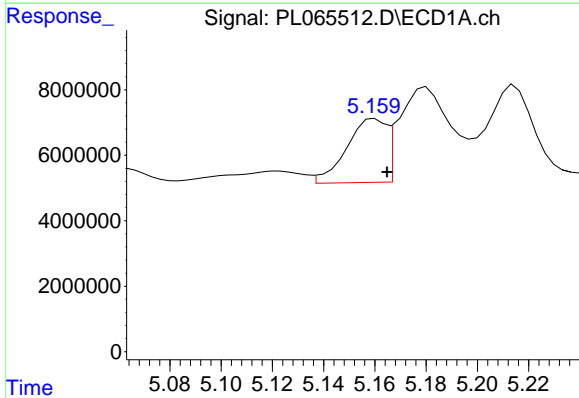


#24 Chlordane-2
 R.T.: 4.609 min
 Delta R.T.: -0.005 min
 Response: 15072611
 Conc: 138.97 ng/ml

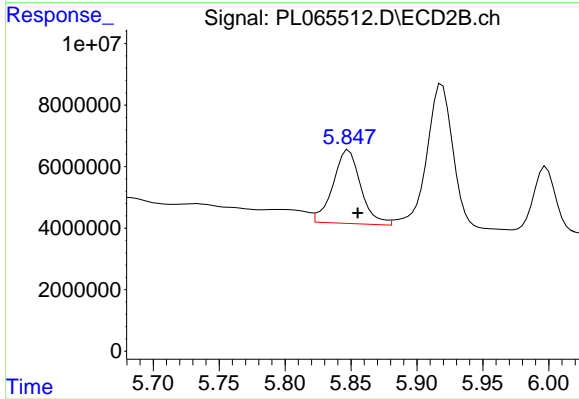
Instrument :
 ECD_L
 ClientSampled :



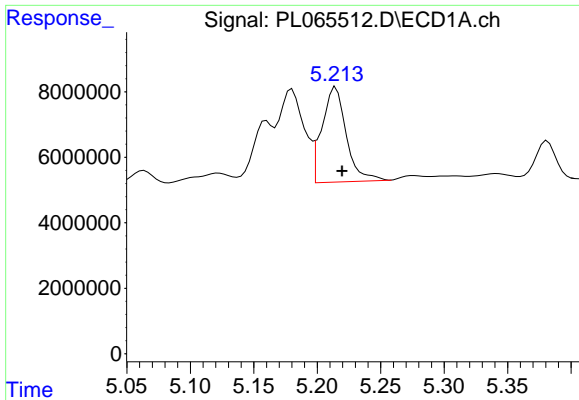
#24 Chlordane-2
 R.T.: 5.212 min
 Delta R.T.: -0.006 min
 Response: 14668045
 Conc: 134.68 ng/ml



#25 Chlordane-3
 R.T.: 5.160 min
 Delta R.T.: -0.005 min
 Response: 20906960
 Conc: 70.07 ng/ml



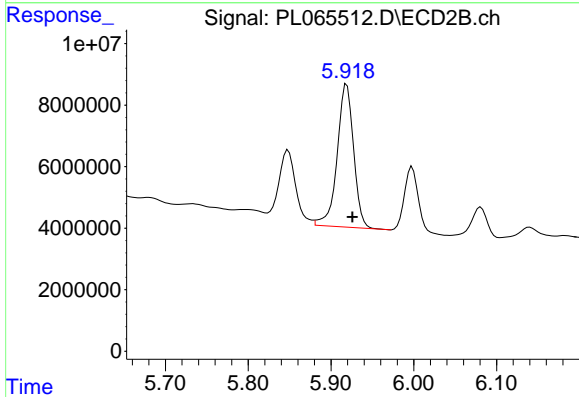
#25 Chlordane-3
 R.T.: 5.848 min
 Delta R.T.: -0.007 min
 Response: 35042797
 Conc: 85.97 ng/ml



#26 Chlordane-4

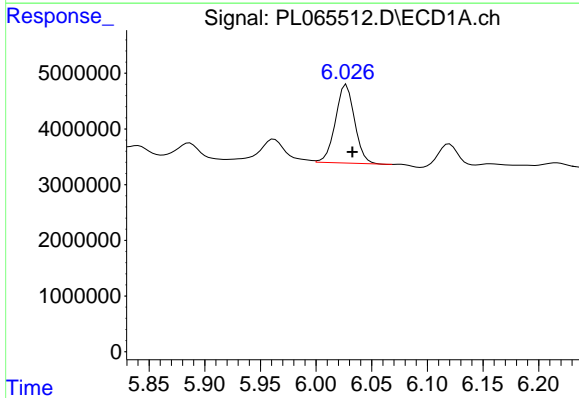
R.T.: 5.215 min
Delta R.T.: -0.005 min
Response: 38787562
Conc: 142.37 ng/ml

Instrument :
ECD_L
ClientSampled :



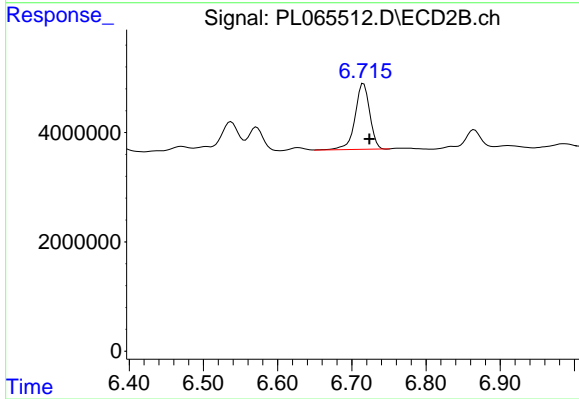
#26 Chlordane-4

R.T.: 5.919 min
Delta R.T.: -0.007 min
Response: 64237561
Conc: 133.53 ng/ml



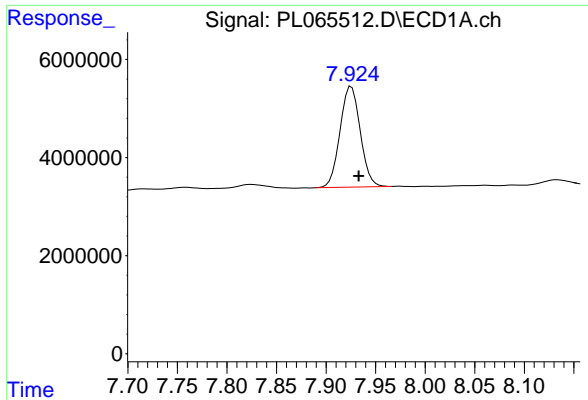
#27 Chlordane-5

R.T.: 6.027 min
Delta R.T.: -0.005 min
Response: 16864557
Conc: 168.68 ng/ml



#27 Chlordane-5

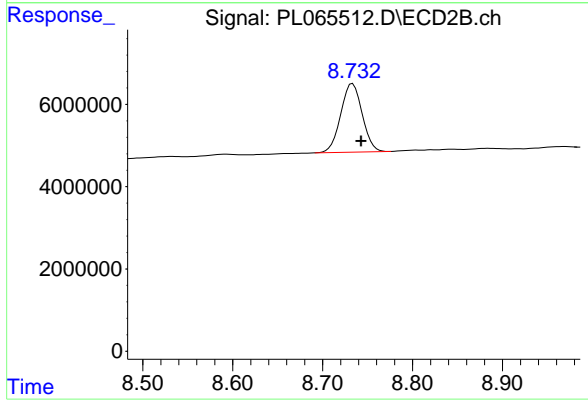
R.T.: 6.716 min
Delta R.T.: -0.008 min
Response: 16558944
Conc: 206.94 ng/ml



#28 Decachlorobiphenyl

R.T.: 7.926 min
Delta R.T.: -0.007 min
Response: 29199354
Conc: 12.09 ng/ml

Instrument :
ECD_L
ClientSampleId :



#28 Decachlorobiphenyl

R.T.: 8.733 min
Delta R.T.: -0.009 min
Response: 27646514
Conc: 13.95 ng/ml