

Data Path : Z:\pestpcbsrv\HPCHEM1\ECD_L\Data\PL032322\
 Data File : PL073638.D
 Signal(s) : Signal #1: ECD1A.ch Signal #2: ECD2B.ch
 Acq On : 24 Mar 2022 01:55
 Operator : AR\AJ
 Sample : N2071-01
 Misc :
 ALS Vial : 41 Sample Multiplier: 1

Instrument :
 ECD_L
 ClientSampleId :
 UNDER-PILE

Integration File signal 1: autoint1.e
 Integration File signal 2: autoint2.e
 Quant Time: Mar 24 04:38:53 2022
 Quant Method : Z:\pestpcbsrv\HPCHEM1\ECD_L\methods\PL031122.M
 Quant Title : GC Extractables
 QLast Update : Mon Mar 14 04:12:46 2022
 Response via : Initial Calibration
 Integrator: ChemStation

Volume Inj. : 1 µl
 Signal #1 Phase : ZB-MR2 Signal #2 Phase: ZB-MR1
 Signal #1 Info : 30M x 0.32mm x0.2 Signal #2 Info : 30M x 0.32mm x0.5µm

Compound	RT#1	RT#2	Resp#1	Resp#2	ng/ml	ng/ml

System Monitoring Compounds						
1) SA Tetrachlo...	4.641	5.492	3561133	17350348	11.119	10.571
28) SA Decachlor...	10.415	11.333	6095986	20990997	11.988	11.739

Target Compounds

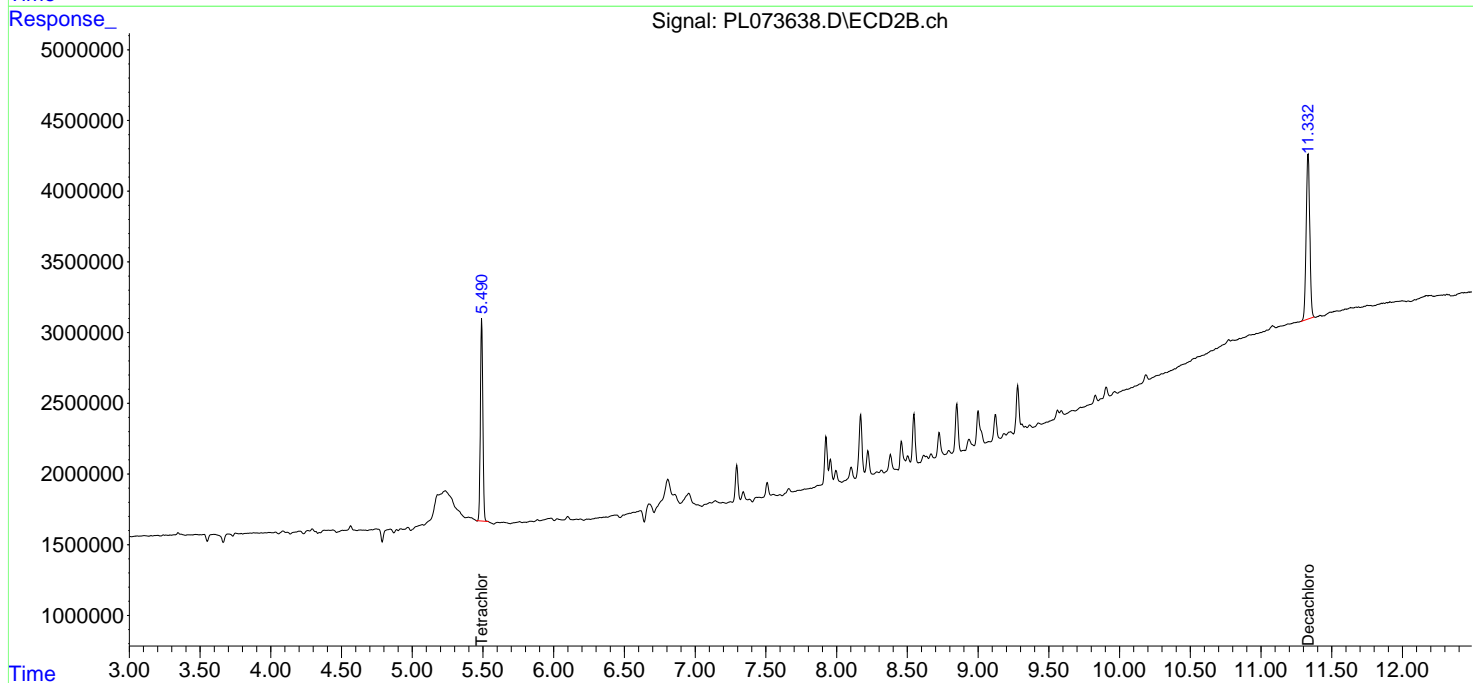
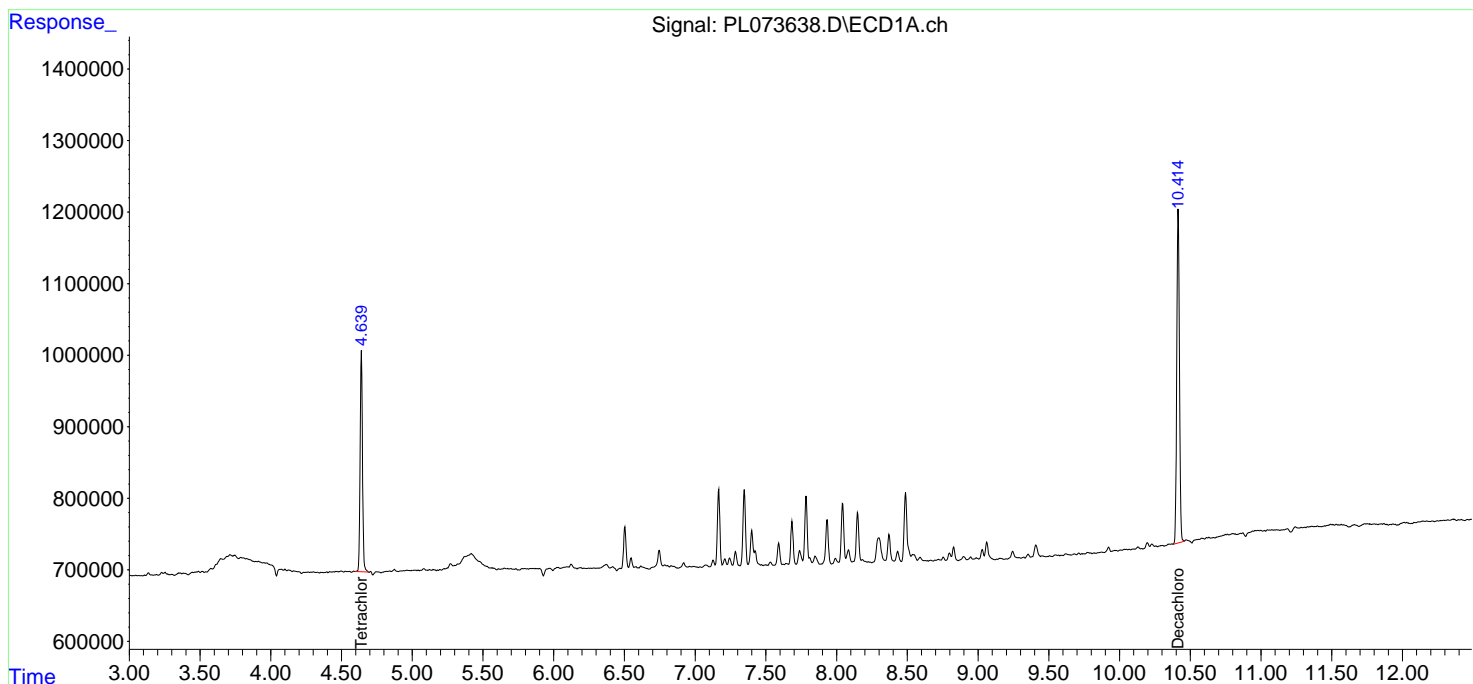
(f)=RT Delta > 1/2 Window (#)=Amounts differ by > 25% (m)=manual int.

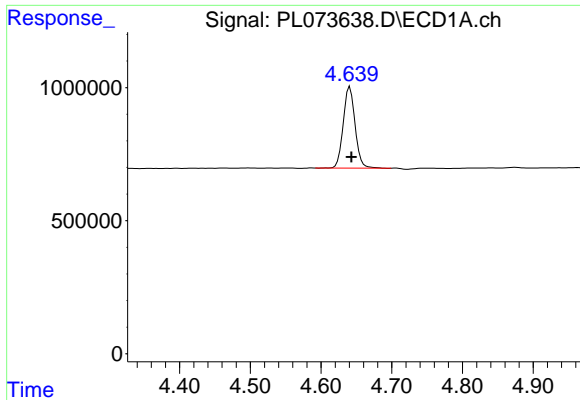
Data Path : Z:\pestpcbsrv\HPCHEM1\ECD_L\Data\PL032322\
 Data File : PL073638.D
 Signal(s) : Signal #1: ECD1A.ch Signal #2: ECD2B.ch
 Acq On : 24 Mar 2022 01:55
 Operator : AR\AJ
 Sample : N2071-01
 Misc :
 ALS Vial : 41 Sample Multiplier: 1

Instrument :
 ECD_L
 ClientSampleId :
 UNDER-PILE

Integration File signal 1: autoint1.e
 Integration File signal 2: autoint2.e
 Quant Time: Mar 24 04:38:53 2022
 Quant Method : Z:\pestpcbsrv\HPCHEM1\ECD_L\methods\PL031122.M
 Quant Title : GC Extractables
 QLast Update : Mon Mar 14 04:12:46 2022
 Response via : Initial Calibration
 Integrator: ChemStation

Volume Inj. : 1 µl
 Signal #1 Phase : ZB-MR2 Signal #2 Phase: ZB-MR1
 Signal #1 Info : 30M x 0.32mm x0.2 Signal #2 Info : 30M x 0.32mm x0.5µm

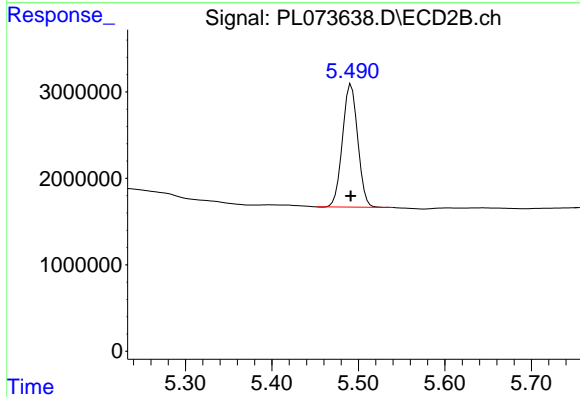




#1 Tetrachloro-m-xylene

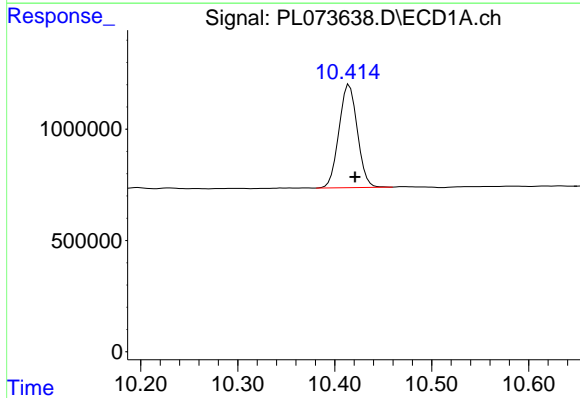
R.T.: 4.641 min
 Delta R.T.: -0.002 min
 Response: 3561133
 Conc: 11.12 ng/ml

Instrument :
 ECD_L
 ClientSampleId :
 UNDER-PILE



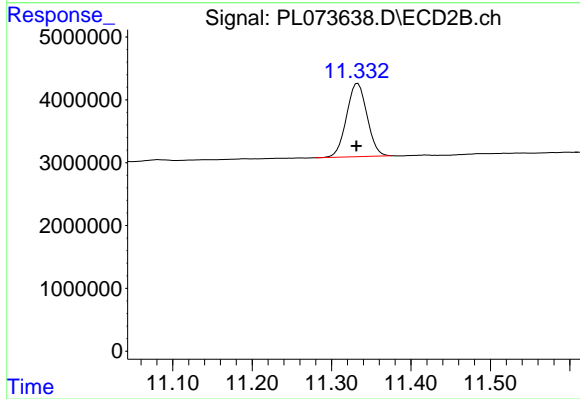
#1 Tetrachloro-m-xylene

R.T.: 5.492 min
 Delta R.T.: 0.000 min
 Response: 17350348
 Conc: 10.57 ng/ml



#28 Decachlorobiphenyl

R.T.: 10.415 min
 Delta R.T.: -0.006 min
 Response: 6095986
 Conc: 11.99 ng/ml



#28 Decachlorobiphenyl

R.T.: 11.333 min
 Delta R.T.: 0.002 min
 Response: 20990997
 Conc: 11.74 ng/ml