

Data Path : Z:\pestpcbsrv\HPCHEM1\ECD\_L\Data\PL032420\  
 Data File : PL057563.D  
 Signal(s) : Signal #1: ECD1A.ch Signal #2: ECD2B.ch  
 Acq On : 24 Mar 2020 20:32  
 Operator : AJ\MA  
 Sample : L2011-02  
 Misc :  
 ALS Vial : 34 Sample Multiplier: 1

Instrument :  
 ECD\_L  
 ClientSampleId :

Integration File signal 1: autoint1.e  
 Integration File signal 2: autoint2.e  
 Quant Time: Mar 25 05:07:08 2020  
 Quant Method : Z:\pestpcbsrv\HPCHEM1\ECD\_L\methods\PL031420.M  
 Quant Title : GC Extractables  
 QLast Update : Mon Mar 16 09:40:37 2020  
 Response via : Initial Calibration  
 Integrator: ChemStation

Volume Inj. : 1 µl  
 Signal #1 Phase : ZB-MR2 Signal #2 Phase: ZB-MR1  
 Signal #1 Info : 30M x 0.32mm x0.2 Signal #2 Info : 30M x 0.32mm x0.5µm

Compound	RT#1	RT#2	Resp#1	Resp#2	ng/ml	ng/ml
-----						
System Monitoring Compounds						
1) SA Tetrachlo...	3.458	3.957	199.0E6	45252660	21.466	20.858
28) SA Decachlor...	8.204	8.977	192.0E6	43671147	18.146	19.695
Target Compounds						
4) MA Heptachlor	0.000	5.139	0	6269207	N.D.	1.992 #
5) MB Aldrin	4.715	0.000	12237060	0	0.887	N.D. #
6) B beta-BHC	4.440	0.000	18429655	0	3.135	N.D. #
8) B Heptachlo...	0.000	5.797f	0	13025406	N.D.	4.774 #
9) A Endosulfan I	5.517	0.000	718912	0	0.060	N.D. #
11) B alpha-Chl...	5.451	0.000	990640	0	0.077	N.D. #
12) B 4,4'-DDE	5.634f	0.000	2418478	0	0.194	N.D. #
13) MA Dieldrin	5.725f	0.000	584101	0	0.046	N.D. #
14) MA Endrin	6.007	0.000	2938031	0	0.257	N.D. #
15) B Endosulfa...	6.288	0.000	1449342	0	0.133	N.D. #
16) A 4,4'-DDD	6.140	0.000	3087282	0	0.315	N.D. #
17) MA 4,4'-DDT	6.364	0.000	973643	0	0.098	N.D. #
19) B Endosulfa...	6.689f	0.000	1242612	0	0.124	N.D. #
22) Mirex	7.340	0.000	988453	0	0.122	N.D. #
23) Chlordane-1	4.352f	0.000	3686977	0	11.360	N.D. #
24) Chlordane-2	4.850f	0.000	15951544	0	43.899	N.D. #
26) Chlordane-4	5.451	0.000	990640	0	1.033	N.D. #
27) Chlordane-5	6.288	0.000	1449342	0	3.983	N.D. #

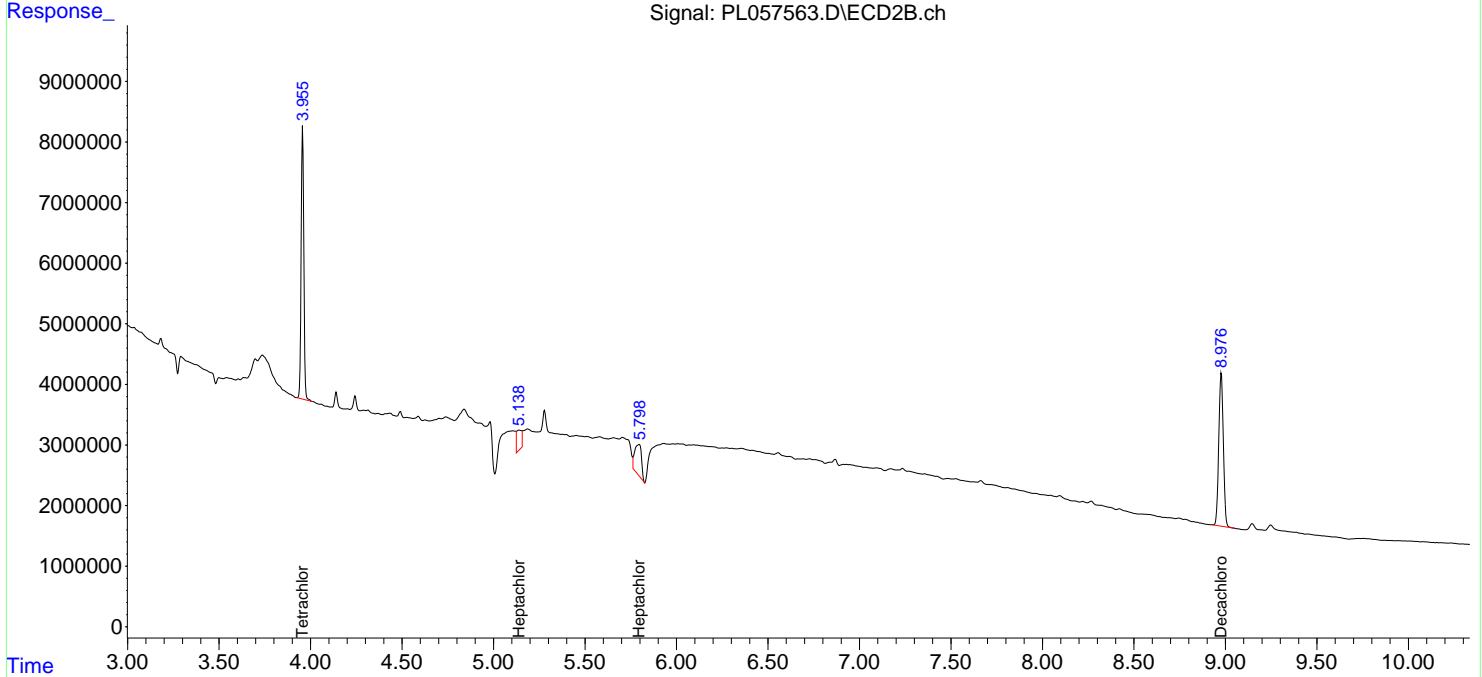
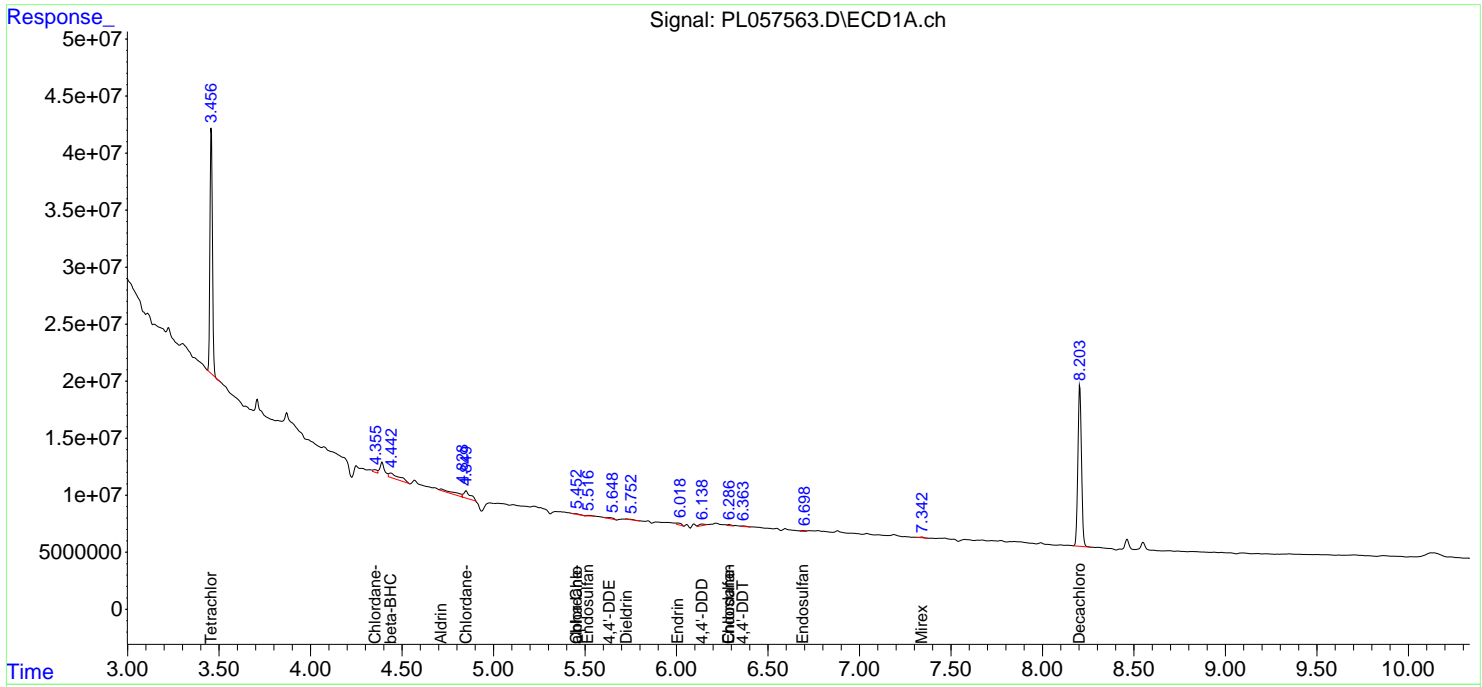
(f)=RT Delta > 1/2 Window (#)=Amounts differ by > 25% (m)=manual int.

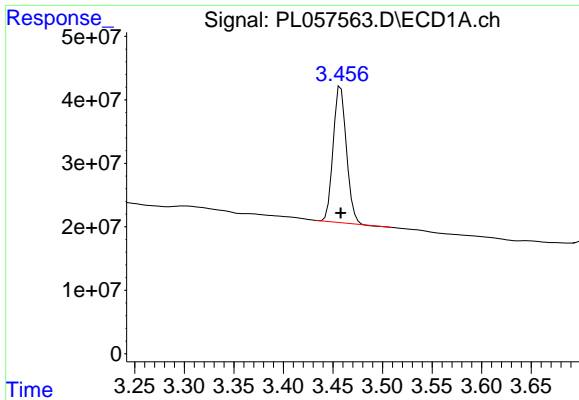
Data Path : Z:\pestpcbsrv\HPCHEM1\ECD\_L\Data\PL032420\  
 Data File : PL057563.D  
 Signal(s) : Signal #1: ECD1A.ch Signal #2: ECD2B.ch  
 Acq On : 24 Mar 2020 20:32  
 Operator : AJ\MA  
 Sample : L2011-02  
 Misc :  
 ALS Vial : 34 Sample Multiplier: 1

Instrument :  
 ECD\_L  
 ClientSampled :

Integration File signal 1: autoint1.e  
 Integration File signal 2: autoint2.e  
 Quant Time: Mar 25 05:07:08 2020  
 Quant Method : Z:\pestpcbsrv\HPCHEM1\ECD\_L\methods\PL031420.M  
 Quant Title : GC Extractables  
 QLast Update : Mon Mar 16 09:40:37 2020  
 Response via : Initial Calibration  
 Integrator: ChemStation

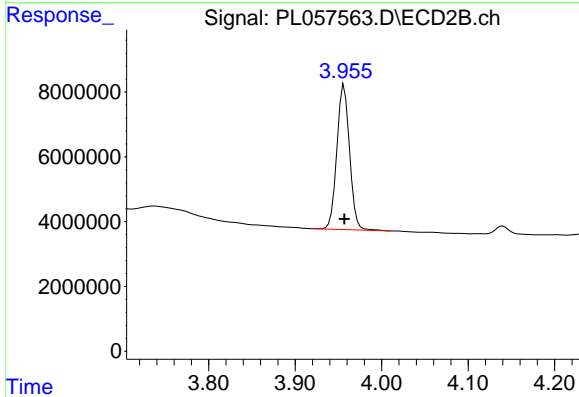
Volume Inj. : 1 µl  
 Signal #1 Phase : ZB-MR2 Signal #2 Phase: ZB-MR1  
 Signal #1 Info : 30M x 0.32mm x0.2 Signal #2 Info : 30M x 0.32mm x0.5µm



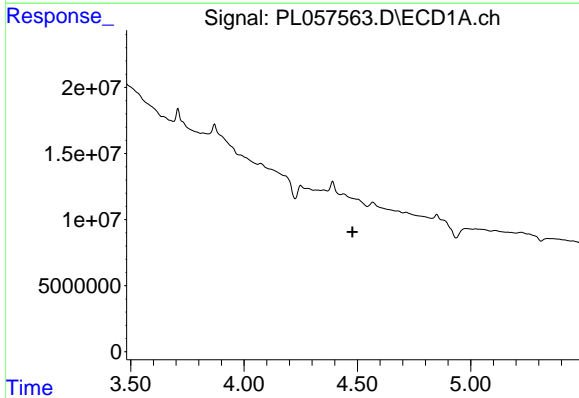


#1 Tetrachloro-m-xylene  
 R.T.: 3.458 min  
 Delta R.T.: 0.000 min  
 Response: 198976544  
 Conc: 21.47 ng/ml

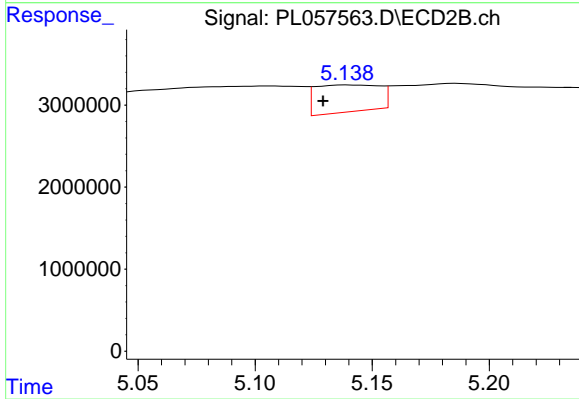
Instrument :  
 ECD\_L  
 ClientSampled :



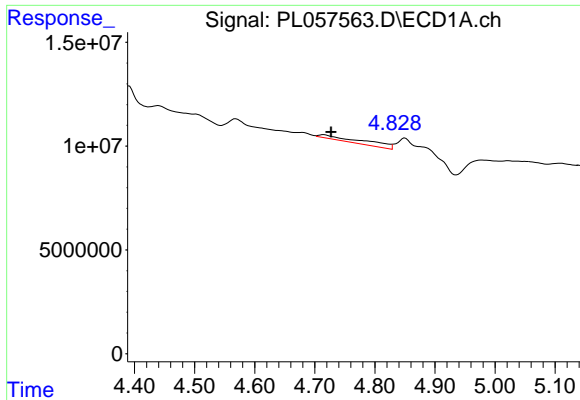
#1 Tetrachloro-m-xylene  
 R.T.: 3.957 min  
 Delta R.T.: 0.000 min  
 Response: 45252660  
 Conc: 20.86 ng/ml



#4 Heptachlor  
 R.T.: 0.000 min  
 Exp R.T. : 4.479 min  
 Response: 0  
 Conc: N.D.

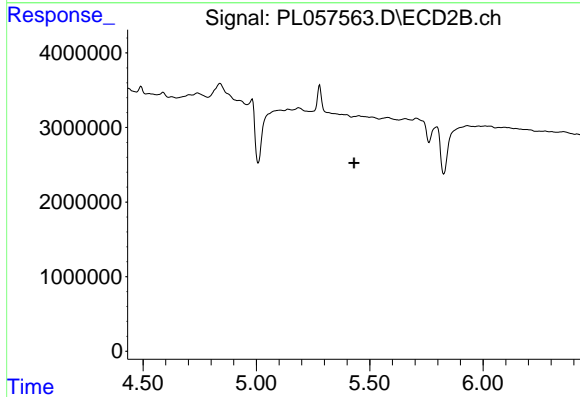


#4 Heptachlor  
 R.T.: 5.139 min  
 Delta R.T.: 0.010 min  
 Response: 6269207  
 Conc: 1.99 ng/ml

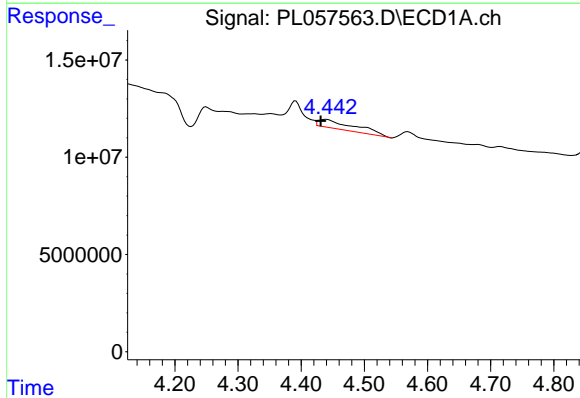


#5 Aldrin  
 R.T.: 4.715 min  
 Delta R.T.: -0.012 min  
 Response: 12237060  
 Conc: 0.89 ng/ml

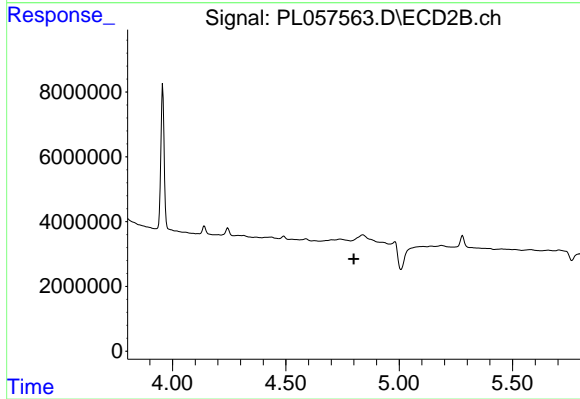
Instrument :  
 ECD\_L  
 ClientSampled :



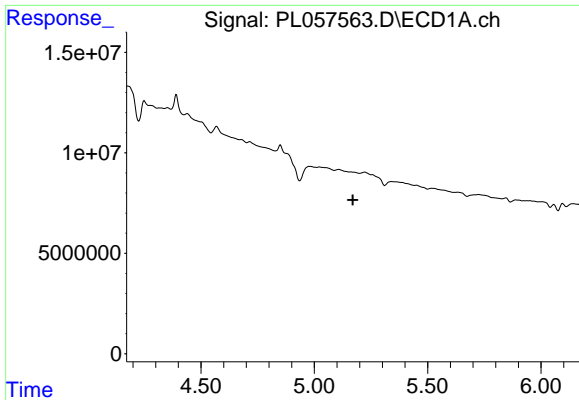
#5 Aldrin  
 R.T.: 0.000 min  
 Exp R.T. : 5.431 min  
 Response: 0  
 Conc: N.D.



#6 beta-BHC  
 R.T.: 4.440 min  
 Delta R.T.: 0.009 min  
 Response: 18429655  
 Conc: 3.13 ng/ml

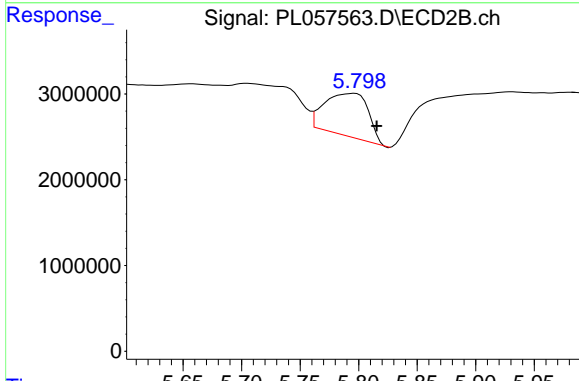


#6 beta-BHC  
 R.T.: 0.000 min  
 Exp R.T. : 4.800 min  
 Response: 0  
 Conc: N.D.

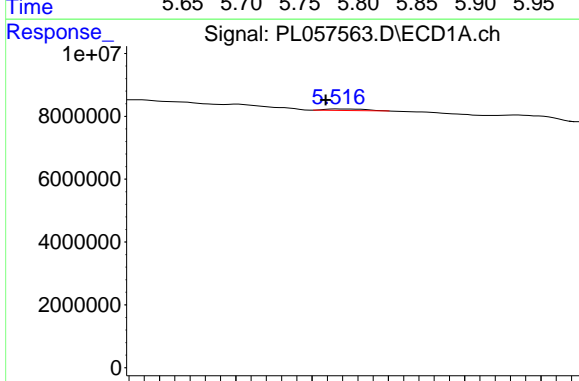


#8 Heptachlor epoxide  
 R.T.: 0.000 min  
 Exp R.T.: 5.170 min  
 Response: 0  
 Conc: N.D.

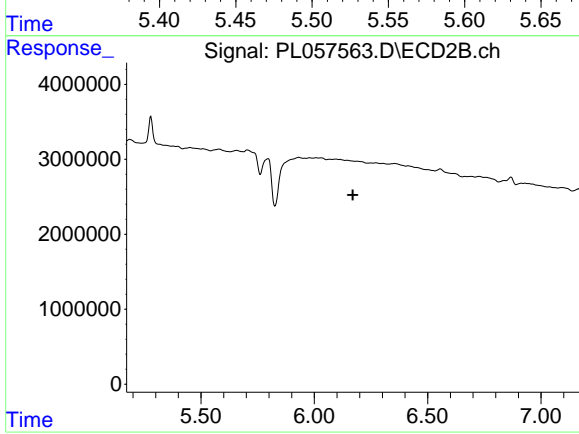
Instrument :  
 ECD\_L  
 ClientSampleId :



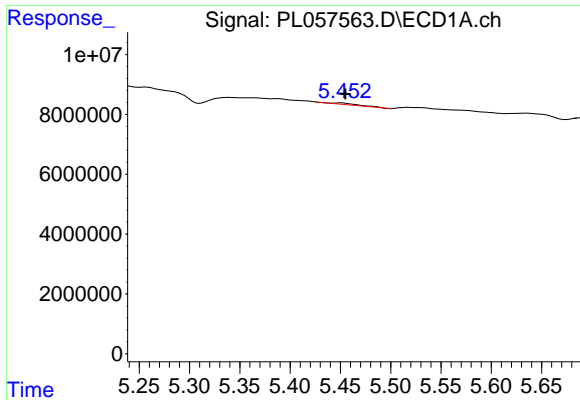
#8 Heptachlor epoxide  
 R.T.: 5.797 min  
 Delta R.T.: -0.019 min  
 Response: 13025406  
 Conc: 4.77 ng/ml



#9 Endosulfan I  
 R.T.: 5.517 min  
 Delta R.T.: 0.008 min  
 Response: 718912  
 Conc: 0.06 ng/ml

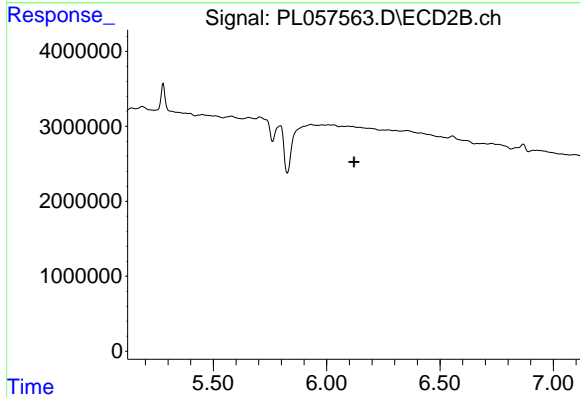


#9 Endosulfan I  
 R.T.: 0.000 min  
 Exp R.T.: 6.170 min  
 Response: 0  
 Conc: N.D.

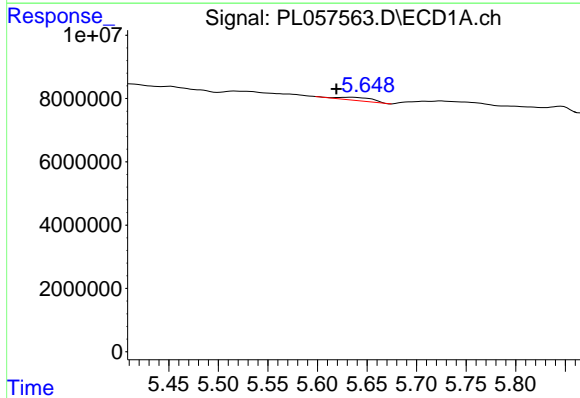


#11 alpha-Chlordane  
 R.T.: 5.451 min  
 Delta R.T.: -0.004 min  
 Response: 990640  
 Conc: 0.08 ng/ml

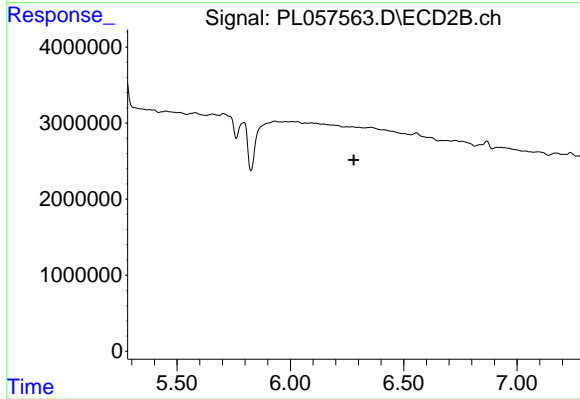
Instrument :  
 ECD\_L  
 ClientSampleId :



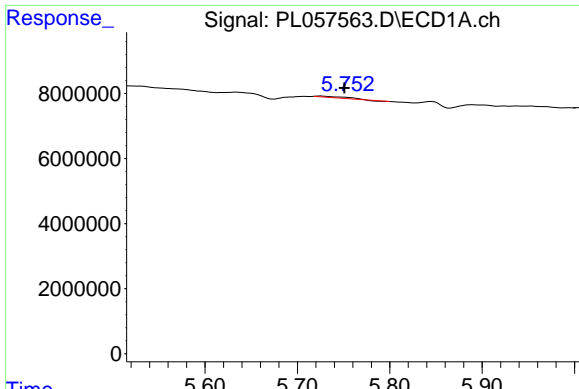
#11 alpha-Chlordane  
 R.T.: 0.000 min  
 Exp R.T. : 6.120 min  
 Response: 0  
 Conc: N.D.



#12 4,4'-DDE  
 R.T.: 5.634 min  
 Delta R.T.: 0.015 min  
 Response: 2418478  
 Conc: 0.19 ng/ml

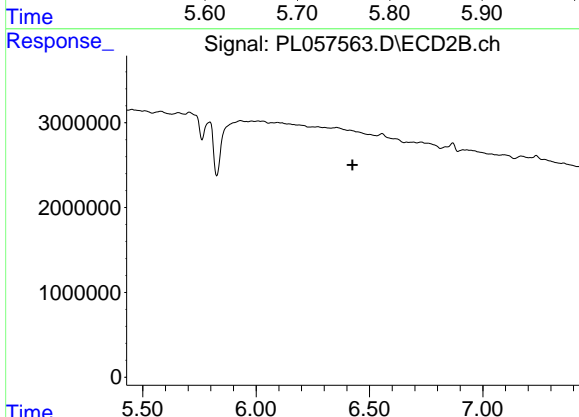


#12 4,4'-DDE  
 R.T.: 0.000 min  
 Exp R.T. : 6.280 min  
 Response: 0  
 Conc: N.D.

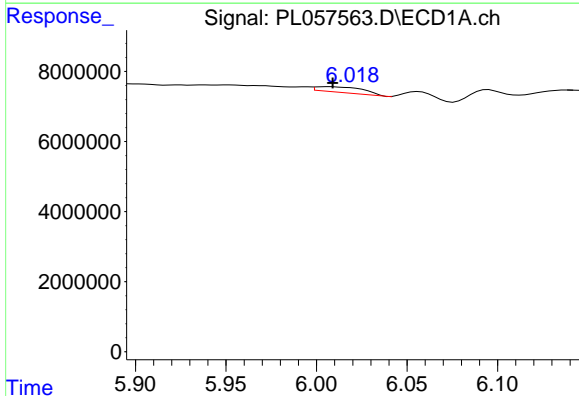


#13 Dieldrin  
 R.T.: 5.725 min  
 Delta R.T.: -0.026 min  
 Response: 584101  
 Conc: 0.05 ng/ml

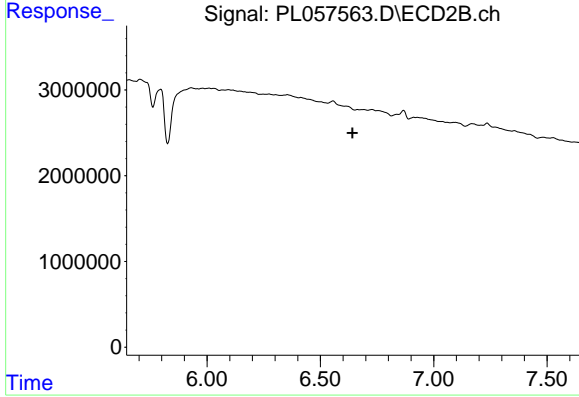
Instrument :  
 ECD\_L  
 ClientSampled :



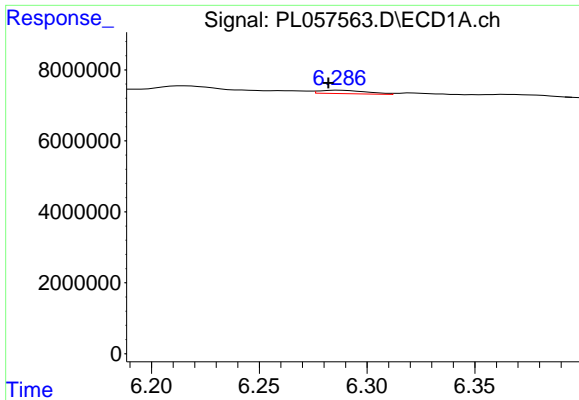
#13 Dieldrin  
 R.T.: 0.000 min  
 Exp R.T. : 6.425 min  
 Response: 0  
 Conc: N.D.



#14 Endrin  
 R.T.: 6.007 min  
 Delta R.T.: -0.002 min  
 Response: 2938031  
 Conc: 0.26 ng/ml

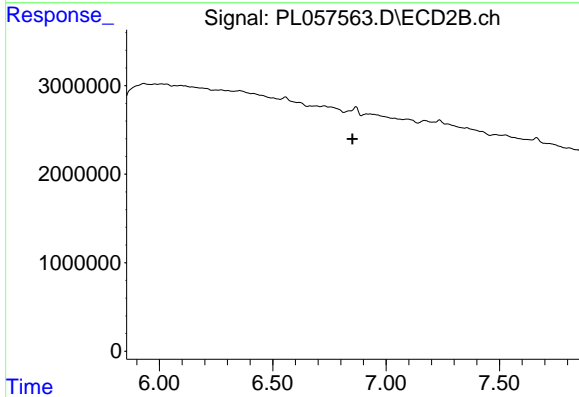


#14 Endrin  
 R.T.: 0.000 min  
 Exp R.T. : 6.642 min  
 Response: 0  
 Conc: N.D.

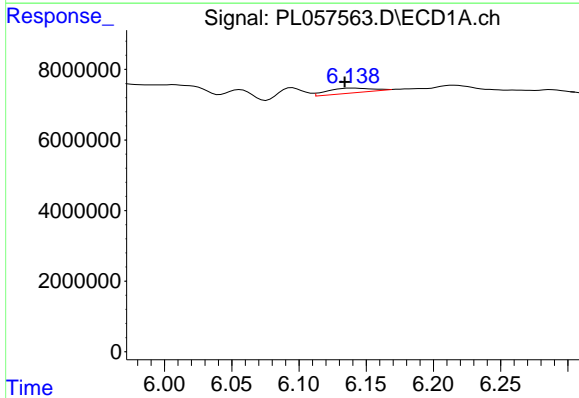


#15 Endosulfan II  
 R.T.: 6.288 min  
 Delta R.T.: 0.006 min  
 Response: 1449342  
 Conc: 0.13 ng/ml

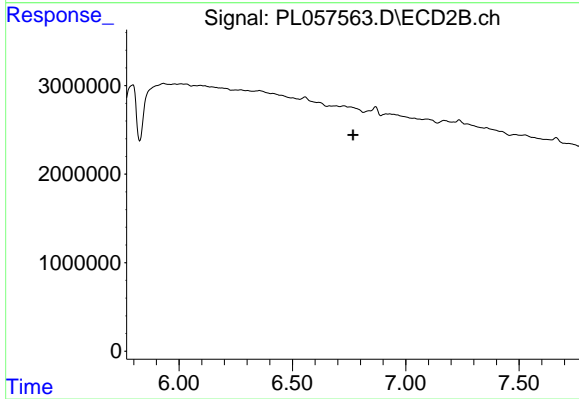
Instrument :  
 ECD\_L  
 ClientSampleId :



#15 Endosulfan II  
 R.T.: 0.000 min  
 Exp R.T. : 6.852 min  
 Response: 0  
 Conc: N.D.

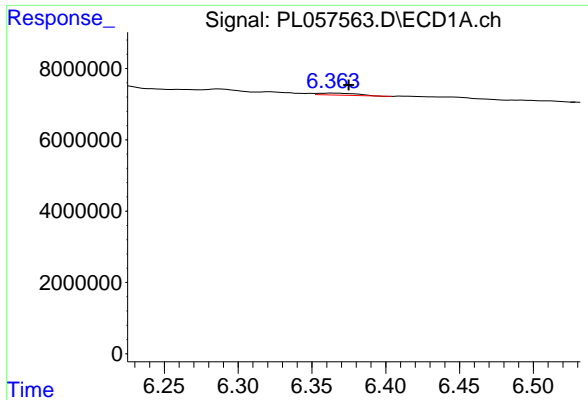


#16 4,4'-DDD  
 R.T.: 6.140 min  
 Delta R.T.: 0.006 min  
 Response: 3087282  
 Conc: 0.31 ng/ml



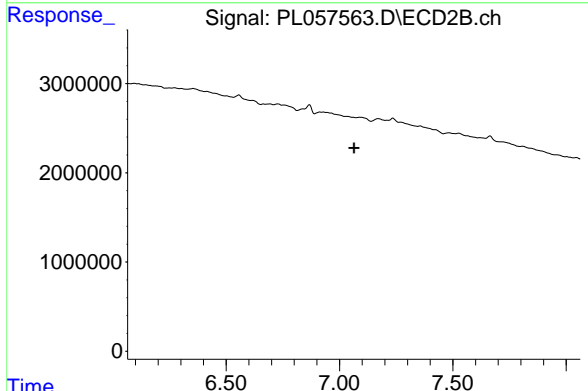
#16 4,4'-DDD  
 R.T.: 0.000 min  
 Exp R.T. : 6.768 min  
 Response: 0  
 Conc: N.D.



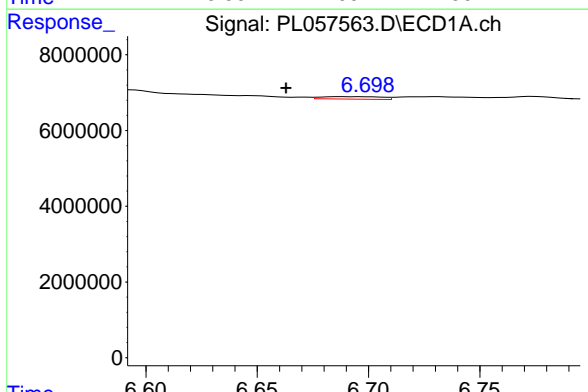


#17 4,4'-DDT  
 R.T.: 6.364 min  
 Delta R.T.: -0.011 min  
 Response: 973643  
 Conc: 0.10 ng/ml

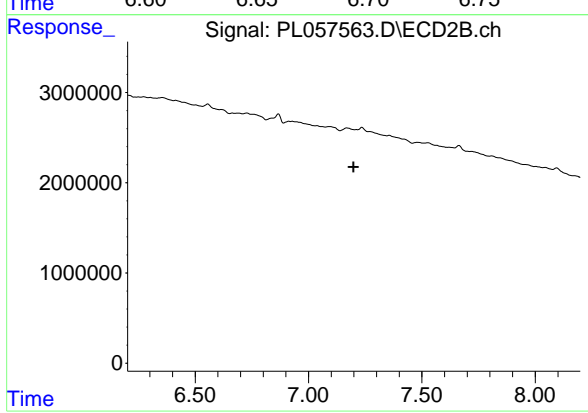
Instrument :  
 ECD\_L  
 ClientSampleId :



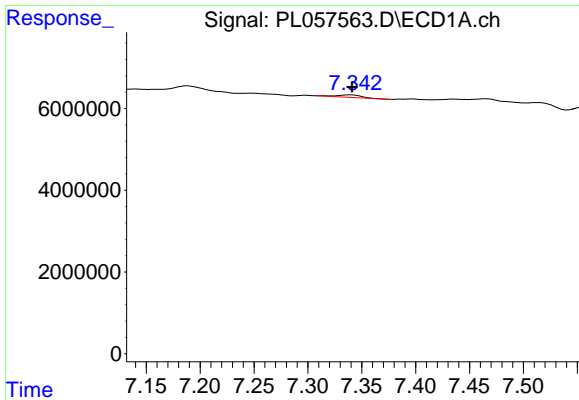
#17 4,4'-DDT  
 R.T.: 0.000 min  
 Exp R.T. : 7.065 min  
 Response: 0  
 Conc: N.D.



#19 Endosulfan Sulfate  
 R.T.: 6.689 min  
 Delta R.T.: 0.026 min  
 Response: 1242612  
 Conc: 0.12 ng/ml

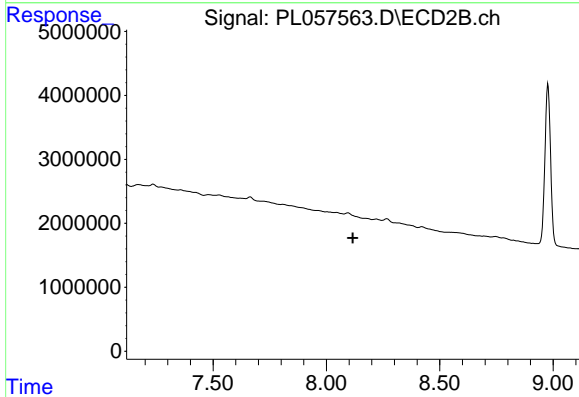


#19 Endosulfan Sulfate  
 R.T.: 0.000 min  
 Exp R.T. : 7.199 min  
 Response: 0  
 Conc: N.D.

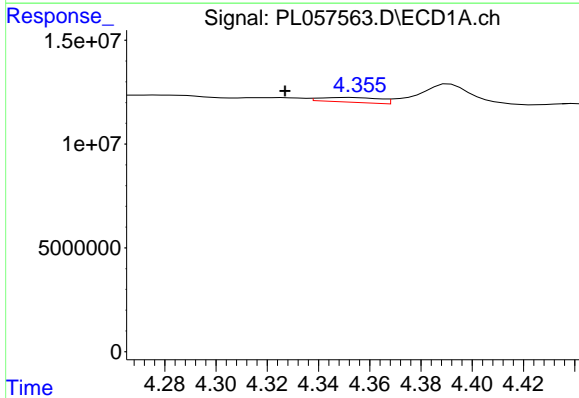


#22 Mirex  
 R.T.: 7.340 min  
 Delta R.T.: 0.000 min  
 Response: 988453  
 Conc: 0.12 ng/ml

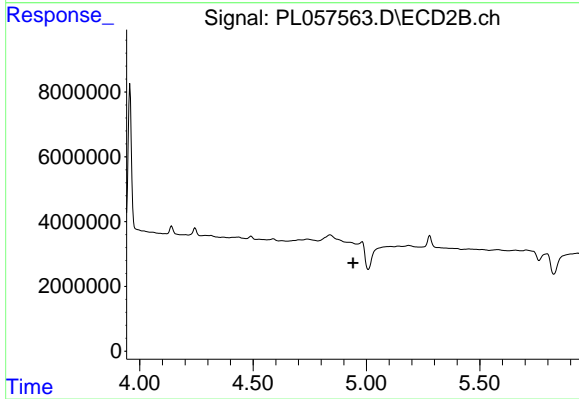
Instrument :  
 ECD\_L  
 ClientSampled :



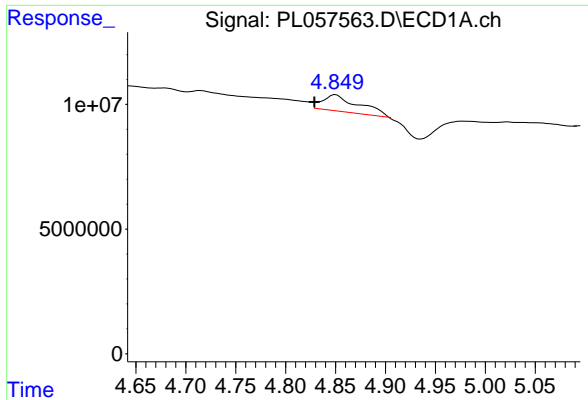
#22 Mirex  
 R.T.: 0.000 min  
 Exp R.T. : 8.116 min  
 Response: 0  
 Conc: N.D.



#23 Chlordane-1  
 R.T.: 4.352 min  
 Delta R.T.: 0.025 min  
 Response: 3686977  
 Conc: 11.36 ng/ml

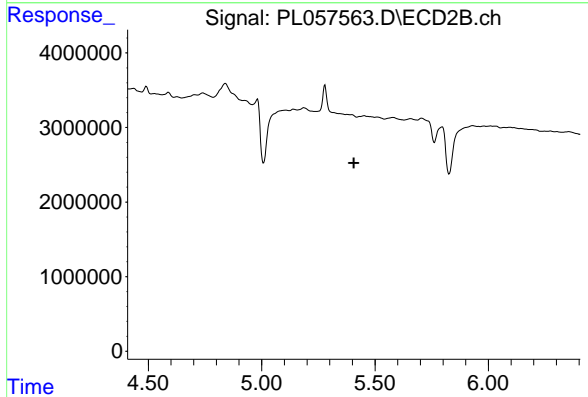


#23 Chlordane-1  
 R.T.: 0.000 min  
 Exp R.T. : 4.941 min  
 Response: 0  
 Conc: N.D.

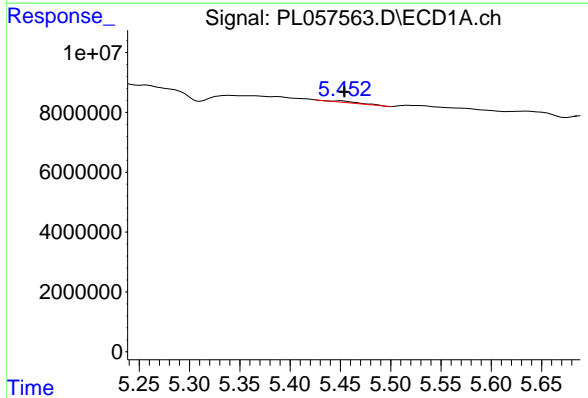


#24 Chlordane-2  
 R.T.: 4.850 min  
 Delta R.T.: 0.021 min  
 Response: 15951544  
 Conc: 43.90 ng/ml

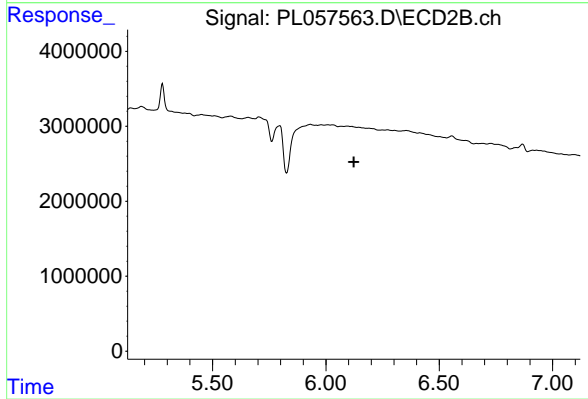
Instrument :  
 ECD\_L  
 ClientSampled :



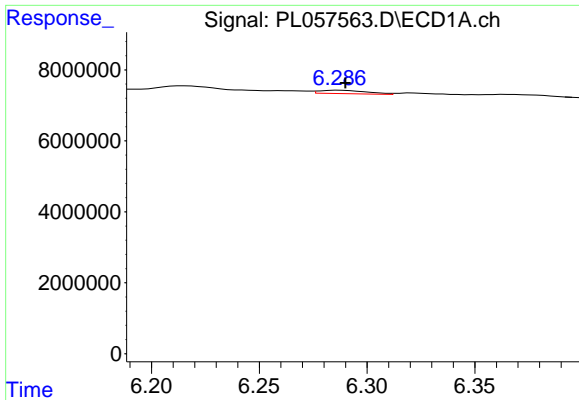
#24 Chlordane-2  
 R.T.: 0.000 min  
 Exp R.T. : 5.406 min  
 Response: 0  
 Conc: N.D.



#26 Chlordane-4  
 R.T.: 5.451 min  
 Delta R.T.: -0.003 min  
 Response: 990640  
 Conc: 1.03 ng/ml

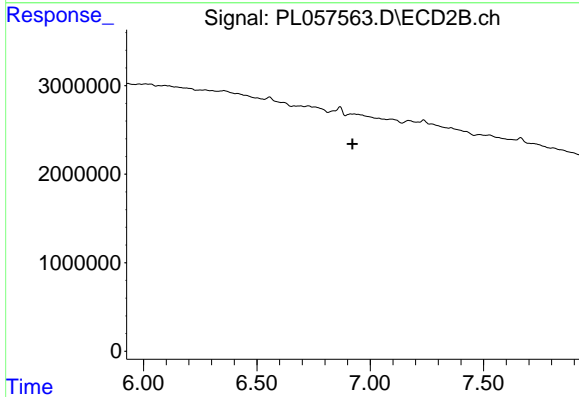


#26 Chlordane-4  
 R.T.: 0.000 min  
 Exp R.T. : 6.122 min  
 Response: 0  
 Conc: N.D.

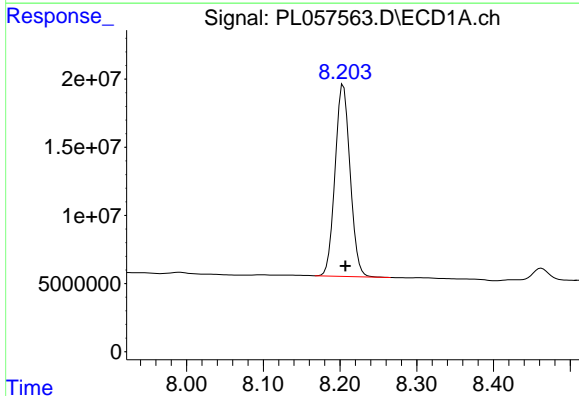


#27 Chlordane-5  
 R.T.: 6.288 min  
 Delta R.T.: -0.002 min  
 Response: 1449342  
 Conc: 3.98 ng/ml

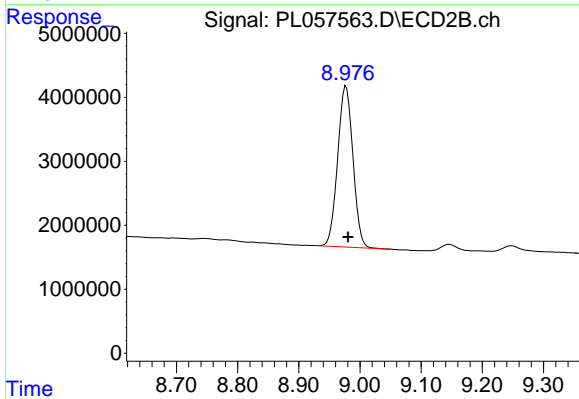
Instrument :  
 ECD\_L  
 ClientSampled :



#27 Chlordane-5  
 R.T.: 0.000 min  
 Exp R.T. : 6.922 min  
 Response: 0  
 Conc: N.D.



#28 Decachlorobiphenyl  
 R.T.: 8.204 min  
 Delta R.T.: -0.003 min  
 Response: 192009524  
 Conc: 18.15 ng/ml



#28 Decachlorobiphenyl  
 R.T.: 8.977 min  
 Delta R.T.: -0.003 min  
 Response: 43671147  
 Conc: 19.70 ng/ml