

Data Path : Z:\pestpcbsrv\HPCHEM1\ECD_L\Data\pl032423\
 Data File : PL081715.D
 Signal(s) : Signal #1: ECD1A.ch Signal #2: ECD2B.ch
 Acq On : 24 Mar 2023 16:38
 Operator : AR\AJ
 Sample : 02049-01
 Misc :
 ALS Vial : 21 Sample Multiplier: 1

Instrument :
 ECD_L
ClientSampleId :
 OK-02-032323

Manual Integrations
APPROVED
 Reviewed By :Abdul Mirza 03/27/2023
 Supervised By :Ankita Jodhani 03/27/2023

Integration File signal 1: autoint1.e
 Integration File signal 2: autoint2.e
 Quant Time: Mar 26 21:27:00 2023
 Quant Method : Z:\pestpcbsrv\HPCHEM1\ECD_L\methods\PL032223.M
 Quant Title : GC Extractables
 QLast Update : Thu Mar 23 01:07:33 2023
 Response via : Initial Calibration
 Integrator: ChemStation

Volume Inj. : 1 µl
 Signal #1 Phase : ZB-MR2 Signal #2 Phase: ZB-MR1
 Signal #1 Info : 30M x 0.32mm x0.2 Signal #2 Info : 30M x 0.32mm x0.5µm

Compound	RT#1	RT#2	Resp#1	Resp#2	ng/ml	ng/ml

System Monitoring Compounds						
1) SA Tetrachlo...	3.329	2.658	39005378	33080868	16.770	16.572
28) SA Decachlor...	8.749	7.776	29564194	32778502	16.520	16.528
Target Compounds						
17) MA 4,4'-DDT	6.784	5.901	652560	1123134	0.322m	0.652 #

(f)=RT Delta > 1/2 Window (#)=Amounts differ by > 25% (m)=manual int.

Data Path : Z:\pestpcbsrv\HPCHEM1\ECD_L\Data\pl032423\
 Data File : PL081715.D
 Signal(s) : Signal #1: ECD1A.ch Signal #2: ECD2B.ch
 Acq On : 24 Mar 2023 16:38
 Operator : AR\AJ
 Sample : 02049-01
 Misc :
 ALS Vial : 21 Sample Multiplier: 1

Instrument :

ECD_L

ClientSampleId :

OK-02-032323

Manual Integrations

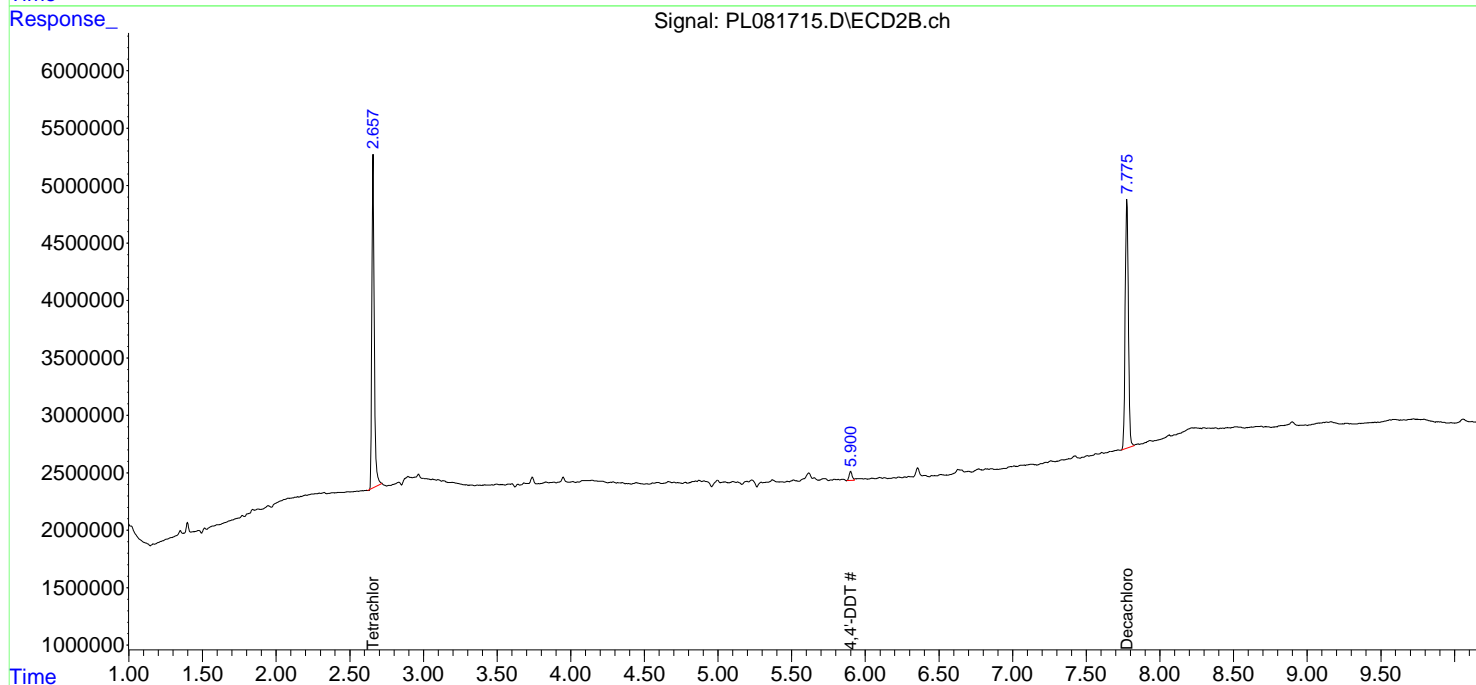
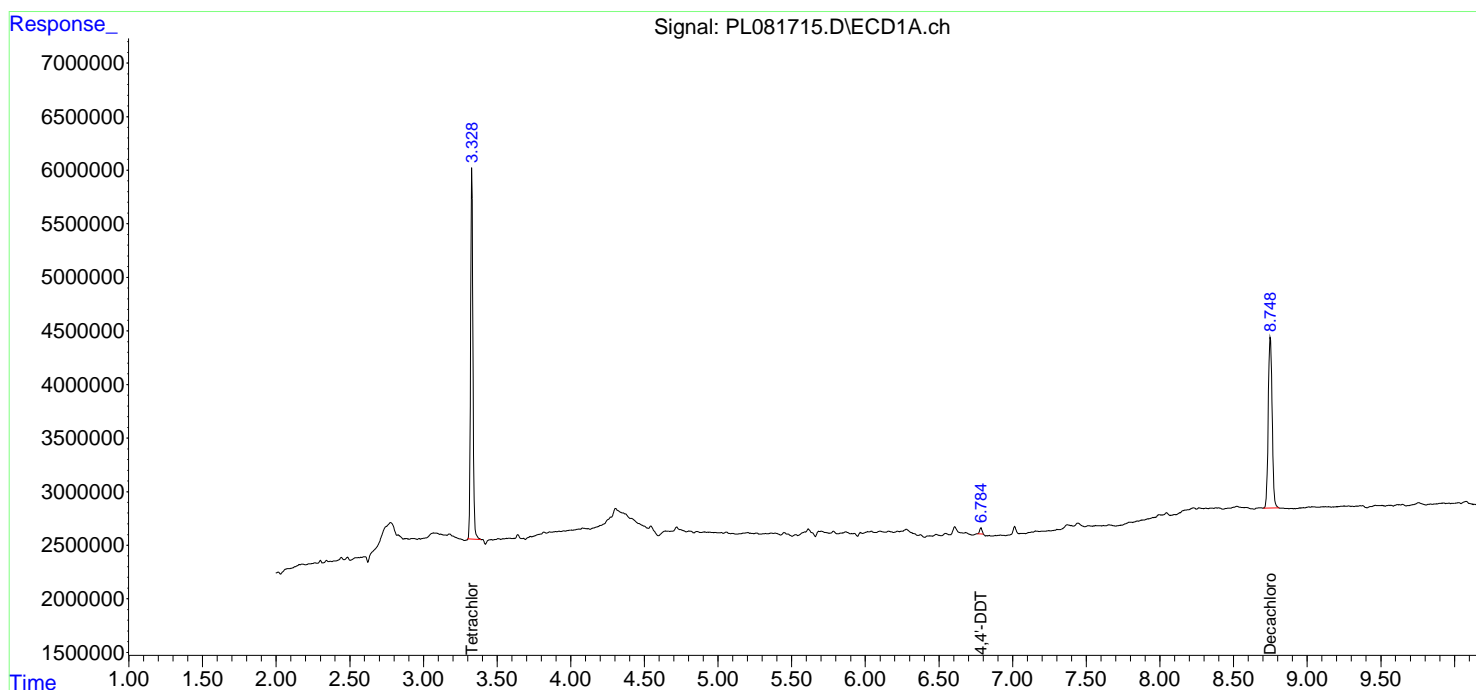
APPROVED

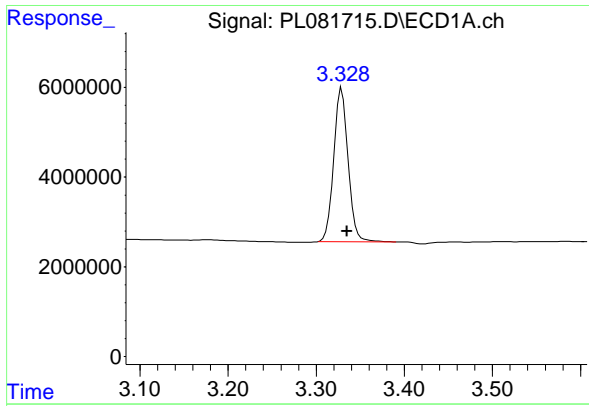
Reviewed By :Abdul Mirza 03/27/2023

Supervised By :Ankita Jodhani 03/27/2023

Integration File signal 1: autoint1.e
 Integration File signal 2: autoint2.e
 Quant Time: Mar 26 21:27:00 2023
 Quant Method : Z:\pestpcbsrv\HPCHEM1\ECD_L\methods\PL032223.M
 Quant Title : GC Extractables
 QLast Update : Thu Mar 23 01:07:33 2023
 Response via : Initial Calibration
 Integrator: ChemStation

Volume Inj. : 1 µl
 Signal #1 Phase : ZB-MR2 Signal #2 Phase: ZB-MR1
 Signal #1 Info : 30M x 0.32mm x0.2 Signal #2 Info : 30M x 0.32mm x0.5µm





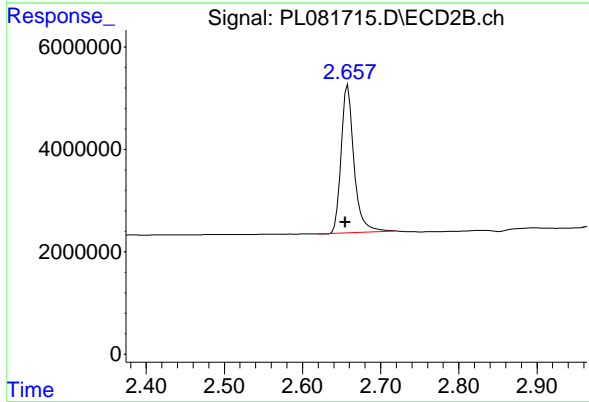
#1 Tetrachloro-m-xylene

R.T.: 3.329 min
 Delta R.T.: -0.006 min
 Response: 39005378
 Conc: 16.77 ng/ml

Instrument : ECD_L
 Client Sample Id : OK-02-032323

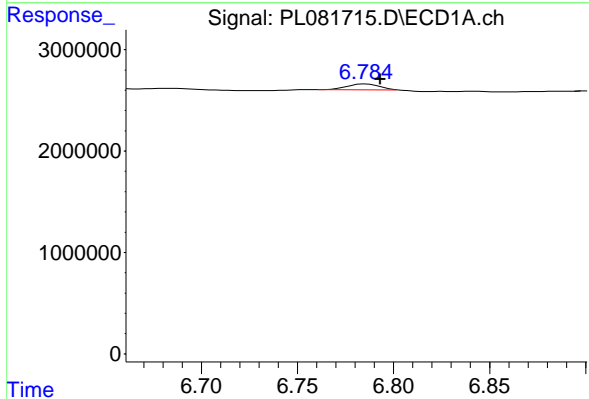
Manual Integrations
 APPROVED

Reviewed By :Abdul Mirza 03/27/2023
 Supervised By :Ankita Jodhani 03/27/2023



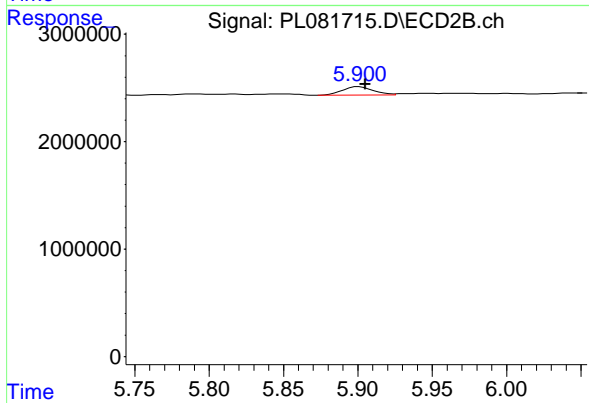
#1 Tetrachloro-m-xylene

R.T.: 2.658 min
 Delta R.T.: 0.003 min
 Response: 33080868
 Conc: 16.57 ng/ml



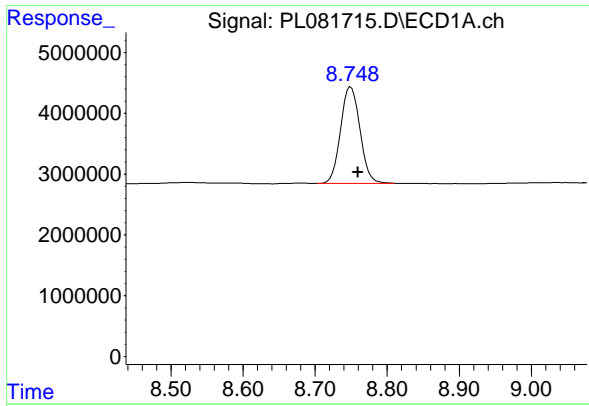
#17 4,4'-DDT

R.T.: 6.784 min
 Delta R.T.: -0.009 min
 Response: 652560
 Conc: 0.32 ng/ml m



#17 4,4'-DDT

R.T.: 5.901 min
 Delta R.T.: -0.004 min
 Response: 1123134
 Conc: 0.65 ng/ml



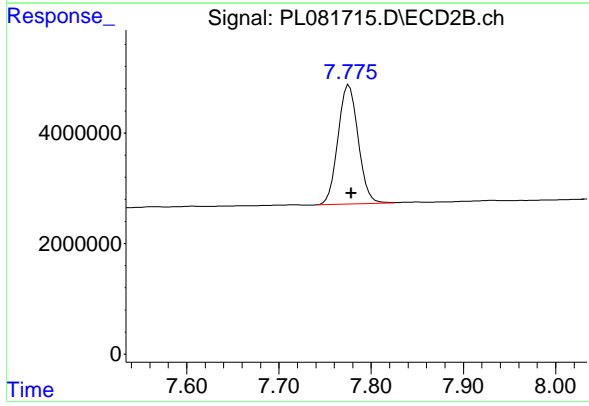
#28 Decachlorobiphenyl

R.T.: 8.749 min
 Delta R.T.: -0.010 min
 Response: 29564194
 Conc: 16.52 ng/ml

Instrument : ECD_L
 Client Sample Id : OK-02-032323

Manual Integrations
 APPROVED

Reviewed By :Abdul Mirza 03/27/2023
 Supervised By :Ankita Jodhani 03/27/2023



#28 Decachlorobiphenyl

R.T.: 7.776 min
 Delta R.T.: -0.003 min
 Response: 32778502
 Conc: 16.53 ng/ml