

Data Path : Z:\pestpcbsrv\HPCHEM1\ECD_L\Data\pl032423\
 Data File : PL081716.D
 Signal(s) : Signal #1: ECD1A.ch Signal #2: ECD2B.ch
 Acq On : 24 Mar 2023 16:52
 Operator : AR\AJ
 Sample : 02064-01
 Misc :
 ALS Vial : 22 Sample Multiplier: 1

Instrument :
 ECD_L
ClientSampleId :
 BU-03-032323

Manual Integrations
APPROVED
 Reviewed By :Abdul Mirza 03/27/2023
 Supervised By :Ankita Jodhani 03/27/2023

Integration File signal 1: autoint1.e
 Integration File signal 2: autoint2.e
 Quant Time: Mar 26 21:27:24 2023
 Quant Method : Z:\pestpcbsrv\HPCHEM1\ECD_L\methods\PL032223.M
 Quant Title : GC Extractables
 QLast Update : Thu Mar 23 01:07:33 2023
 Response via : Initial Calibration
 Integrator: ChemStation

Volume Inj. : 1 µl
 Signal #1 Phase : ZB-MR2 Signal #2 Phase: ZB-MR1
 Signal #1 Info : 30M x 0.32mm x0.2 Signal #2 Info : 30M x 0.32mm x0.5µm

Compound	RT#1	RT#2	Resp#1	Resp#2	ng/ml	ng/ml

System Monitoring Compounds						
1) SA Tetrachlo...	3.329	2.658	21266274	18341591	9.143	9.188
28) SA Decachlor...	8.750	7.776	15655454	17266502	8.748	8.706
Target Compounds						
12) B 4,4'-DDE	5.958	5.098	3054497	2786202	1.355	1.414m
17) MA 4,4'-DDT	6.785	5.902	1610539	1594873	0.794	0.925

(f)=RT Delta > 1/2 Window (#)=Amounts differ by > 25% (m)=manual int.

Data Path : Z:\pestpcbsrv\HPCHEM1\ECD_L\Data\pl032423\
 Data File : PL081716.D
 Signal(s) : Signal #1: ECD1A.ch Signal #2: ECD2B.ch
 Acq On : 24 Mar 2023 16:52
 Operator : AR\AJ
 Sample : 02064-01
 Misc :
 ALS Vial : 22 Sample Multiplier: 1

Instrument :

ECD_L

ClientSampleId :

BU-03-032323

Manual Integrations

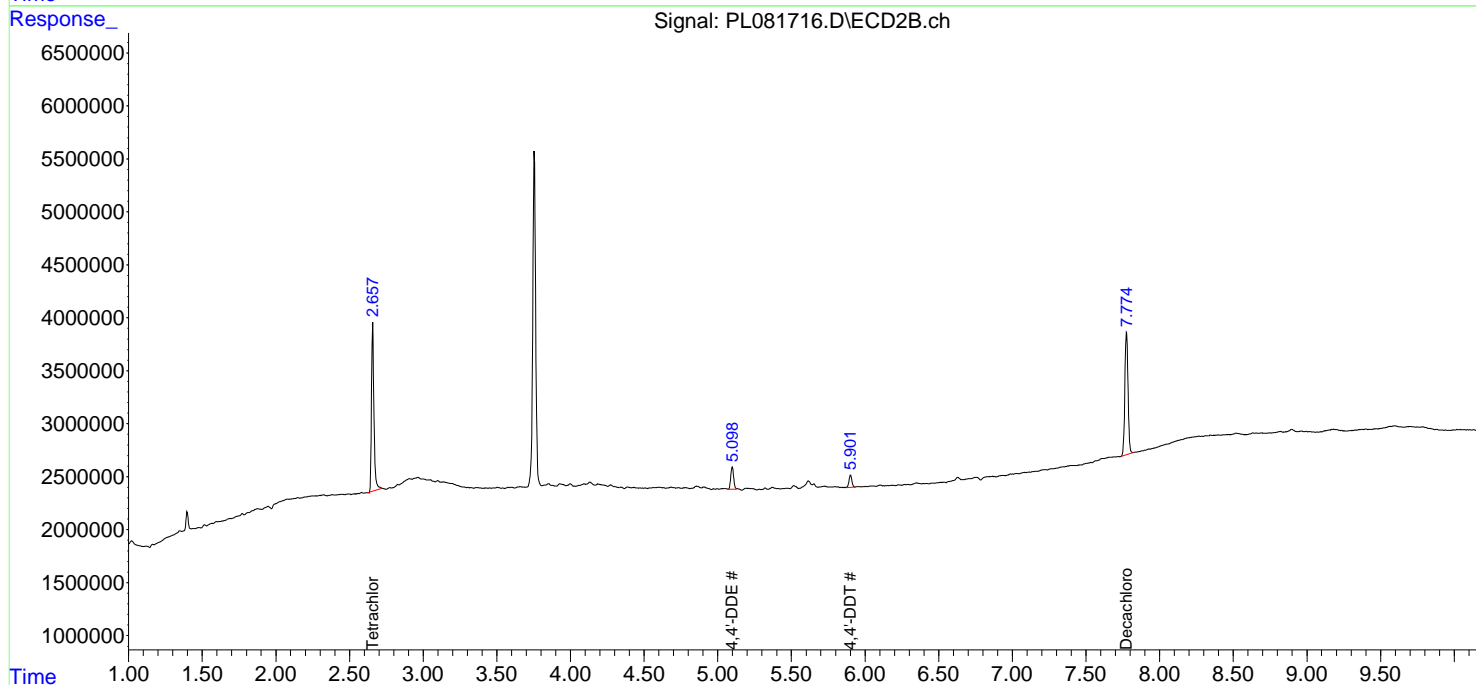
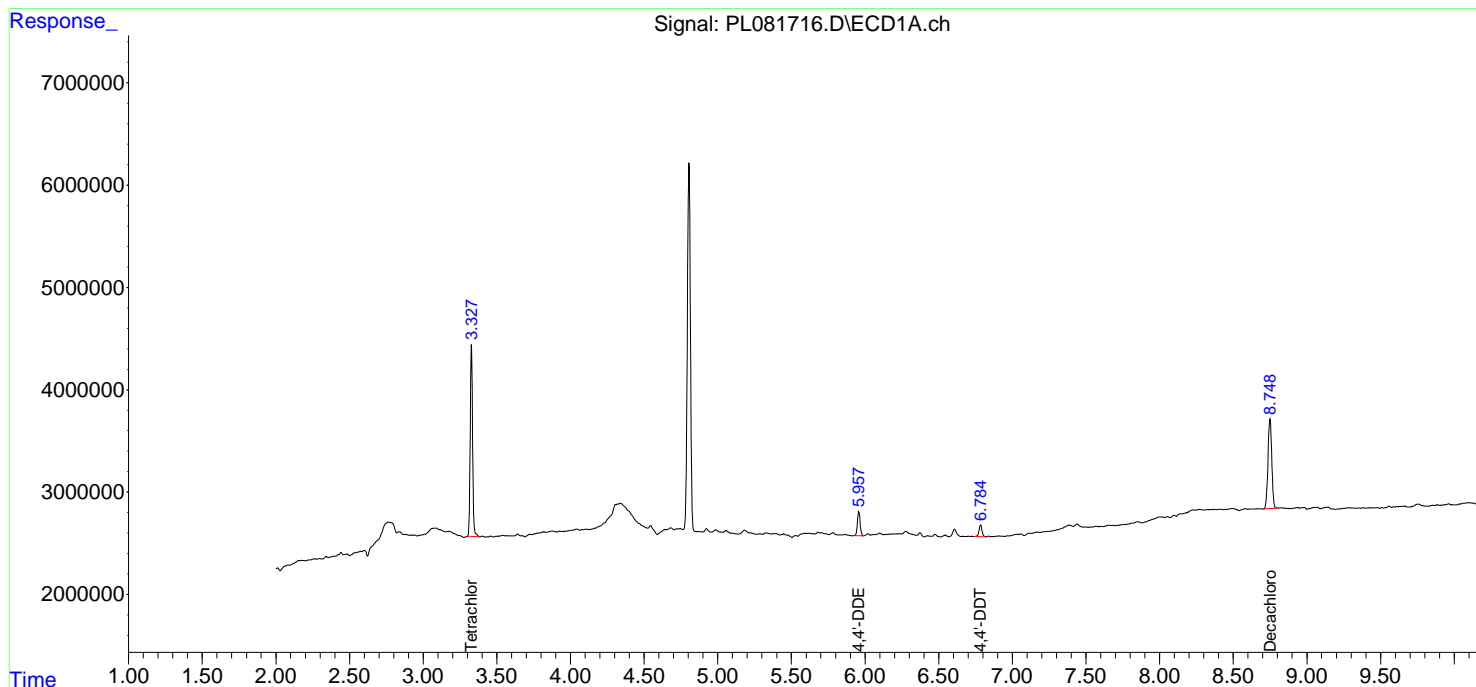
APPROVED

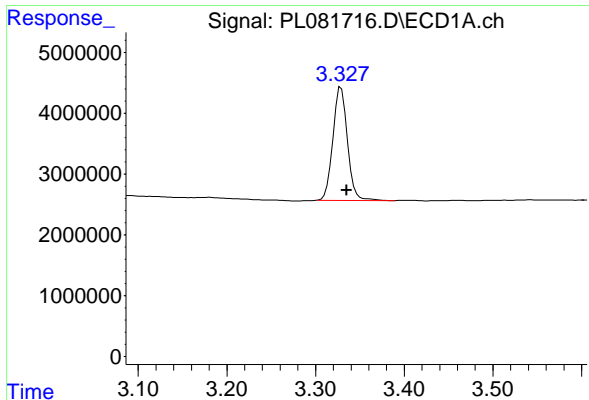
Reviewed By :Abdul Mirza 03/27/2023

Supervised By :Ankita Jodhani 03/27/2023

Integration File signal 1: autoint1.e
 Integration File signal 2: autoint2.e
 Quant Time: Mar 26 21:27:24 2023
 Quant Method : Z:\pestpcbsrv\HPCHEM1\ECD_L\methods\PL032223.M
 Quant Title : GC Extractables
 QLast Update : Thu Mar 23 01:07:33 2023
 Response via : Initial Calibration
 Integrator: ChemStation

Volume Inj. : 1 µl
 Signal #1 Phase : ZB-MR2 Signal #2 Phase: ZB-MR1
 Signal #1 Info : 30M x 0.32mm x0.2 Signal #2 Info : 30M x 0.32mm x0.5µm





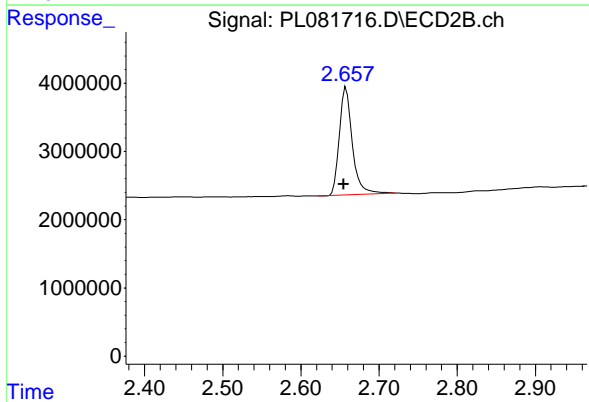
#1 Tetrachloro-m-xylene

R.T.: 3.329 min
 Delta R.T.: -0.006 min
 Response: 21266274
 Conc: 9.14 ng/ml

Instrument : ECD_L
 Client Sample Id : BU-03-032323

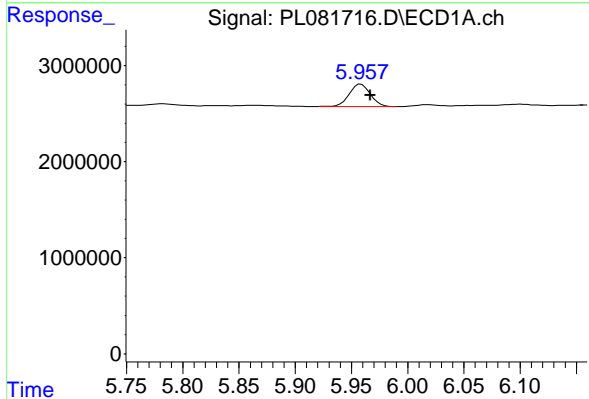
Manual Integrations
 APPROVED

Reviewed By :Abdul Mirza 03/27/2023
 Supervised By :Ankita Jodhani 03/27/2023



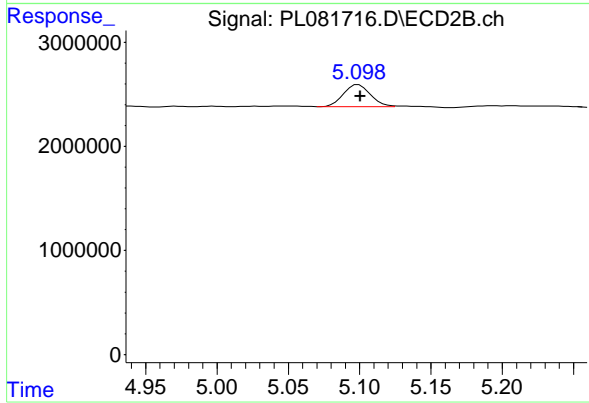
#1 Tetrachloro-m-xylene

R.T.: 2.658 min
 Delta R.T.: 0.003 min
 Response: 18341591
 Conc: 9.19 ng/ml



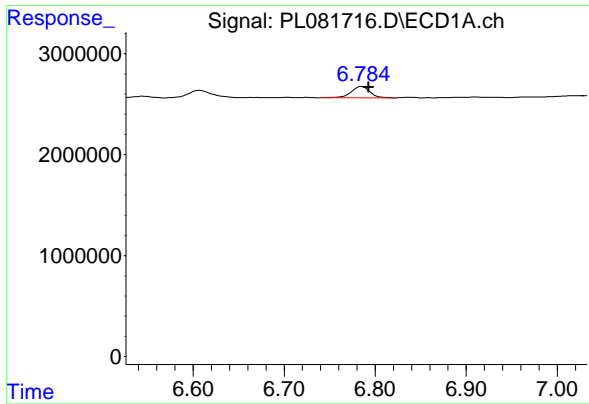
#12 4,4'-DDE

R.T.: 5.958 min
 Delta R.T.: -0.008 min
 Response: 3054497
 Conc: 1.36 ng/ml



#12 4,4'-DDE

R.T.: 5.098 min
 Delta R.T.: -0.003 min
 Response: 2786202
 Conc: 1.41 ng/ml m



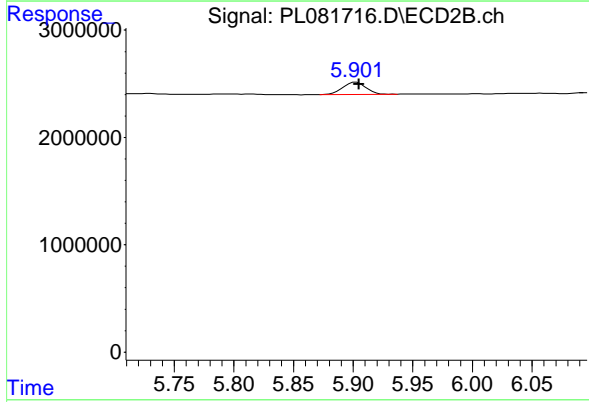
#17 4,4' -DDT

R.T.: 6.785 min
 Delta R.T.: -0.007 min
 Response: 1610539
 Conc: 0.79 ng/ml

Instrument :
 ECD_L
 Client Sample Id :
 BU-03-032323

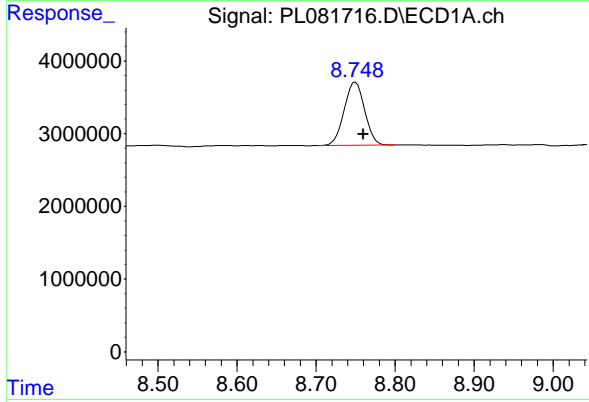
Manual Integrations
 APPROVED

Reviewed By :Abdul Mirza 03/27/2023
 Supervised By :Ankita Jodhani 03/27/2023



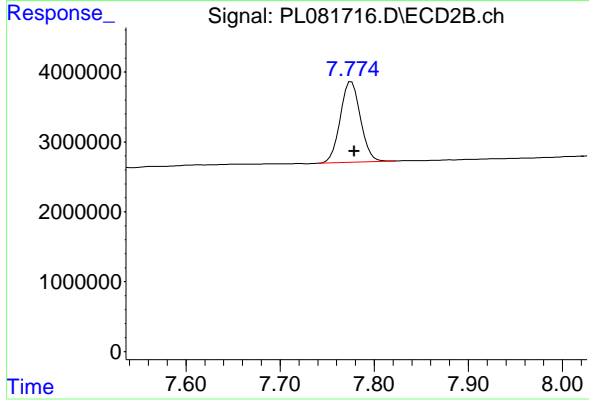
#17 4,4' -DDT

R.T.: 5.902 min
 Delta R.T.: -0.003 min
 Response: 1594873
 Conc: 0.93 ng/ml



#28 Decachlorobiphenyl

R.T.: 8.750 min
 Delta R.T.: -0.010 min
 Response: 15655454
 Conc: 8.75 ng/ml



#28 Decachlorobiphenyl

R.T.: 7.776 min
 Delta R.T.: -0.003 min
 Response: 17266502
 Conc: 8.71 ng/ml