

Data Path : Z:\pestpcbsrv\HPCHEM1\ECD_L\Data\pl032423\
 Data File : PL081728.D
 Signal(s) : Signal #1: ECD1A.ch Signal #2: ECD2B.ch
 Acq On : 24 Mar 2023 19:40
 Operator : AR\AJ
 Sample : PB151641TB
 Misc :
 ALS Vial : 34 Sample Multiplier: 1

Instrument :
 ECD_L
 ClientSampleId :
 PB151641TB

Integration File signal 1: autoint1.e
 Integration File signal 2: autoint2.e
 Quant Time: Mar 26 21:32:41 2023
 Quant Method : Z:\pestpcbsrv\HPCHEM1\ECD_L\methods\PL032223.M
 Quant Title : GC Extractables
 QLast Update : Thu Mar 23 01:07:33 2023
 Response via : Initial Calibration
 Integrator: ChemStation

Volume Inj. : 1 µl
 Signal #1 Phase : ZB-MR2 Signal #2 Phase: ZB-MR1
 Signal #1 Info : 30M x 0.32mm x0.2 Signal #2 Info : 30M x 0.32mm x0.5µm

Compound	RT#1	RT#2	Resp#1	Resp#2	ng/ml	ng/ml

System Monitoring Compounds						
1) SA Tetrachlo...	3.329	2.658	39516365	33592671	16.990	16.829
28) SA Decachlor...	8.750	7.775	31437023	36158099	17.566	18.232

Target Compounds

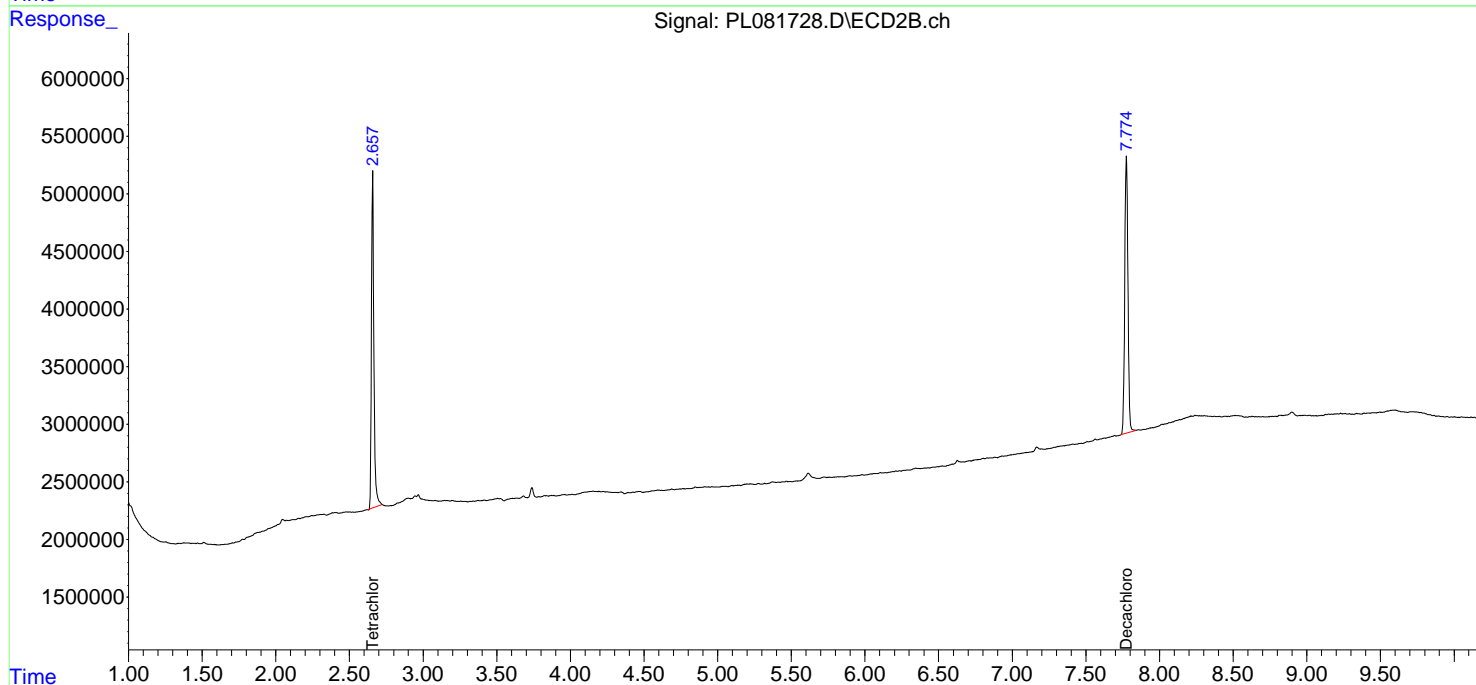
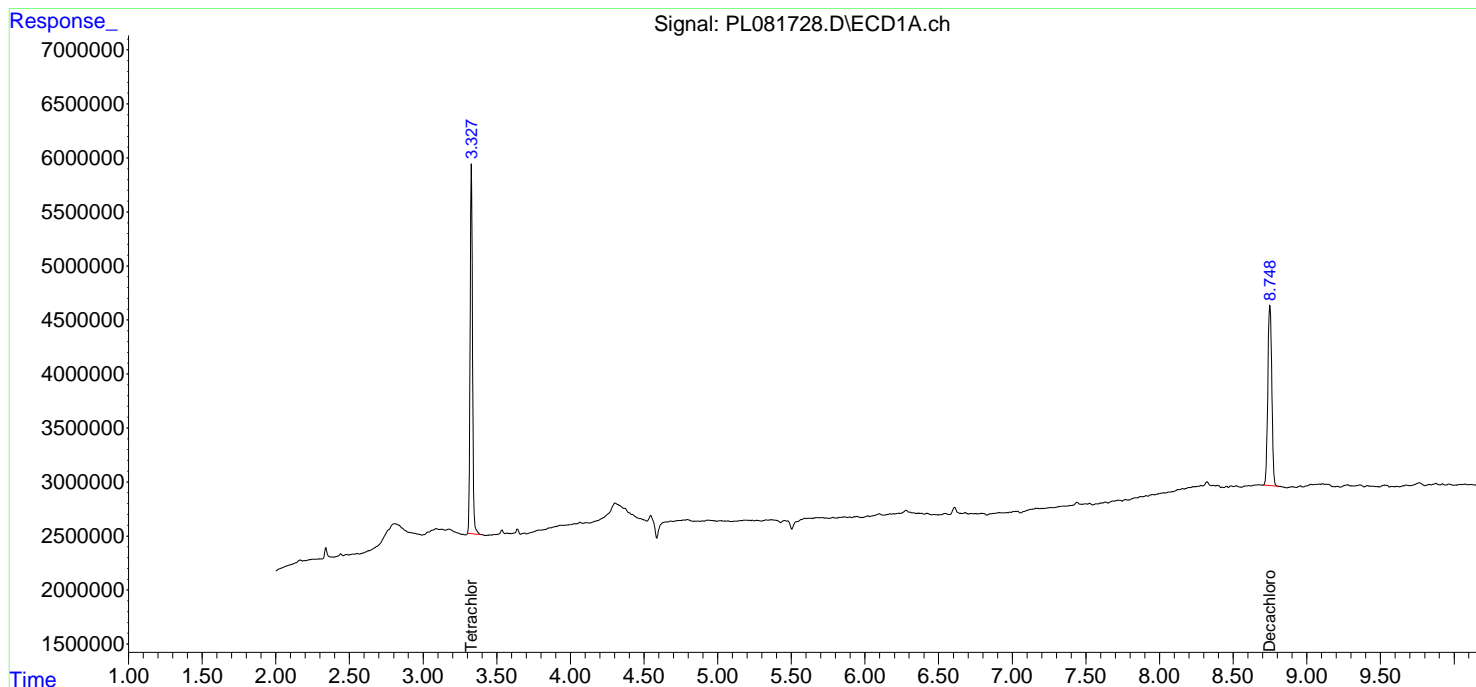
(f)=RT Delta > 1/2 Window (#)=Amounts differ by > 25% (m)=manual int.

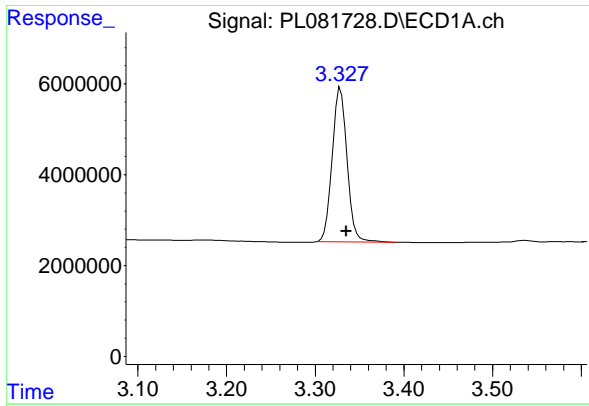
Data Path : Z:\pestpcbsrv\HPCHEM1\ECD_L\Data\pl032423\
 Data File : PL081728.D
 Signal(s) : Signal #1: ECD1A.ch Signal #2: ECD2B.ch
 Acq On : 24 Mar 2023 19:40
 Operator : AR\AJ
 Sample : PB151641TB
 Misc :
 ALS Vial : 34 Sample Multiplier: 1

Instrument :
 ECD_L
 ClientSampleId :
 PB151641TB

Integration File signal 1: autoint1.e
 Integration File signal 2: autoint2.e
 Quant Time: Mar 26 21:32:41 2023
 Quant Method : Z:\pestpcbsrv\HPCHEM1\ECD_L\methods\PL032223.M
 Quant Title : GC Extractables
 QLast Update : Thu Mar 23 01:07:33 2023
 Response via : Initial Calibration
 Integrator: ChemStation

Volume Inj. : 1 µl
 Signal #1 Phase : ZB-MR2 Signal #2 Phase: ZB-MR1
 Signal #1 Info : 30M x 0.32mm x0.2 Signal #2 Info : 30M x 0.32mm x0.5µm

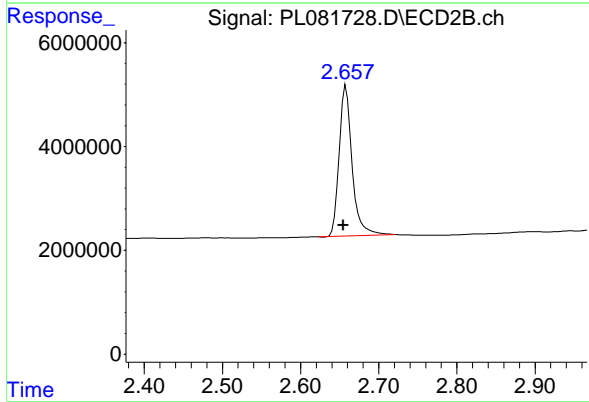




#1 Tetrachloro-m-xylene

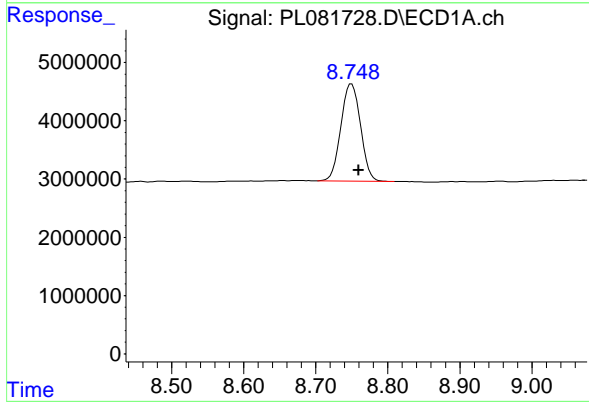
R.T.: 3.329 min
 Delta R.T.: -0.006 min
 Response: 39516365
 Conc: 16.99 ng/ml

Instrument :
 ECD_L
 ClientSampleId :
 PB151641TB



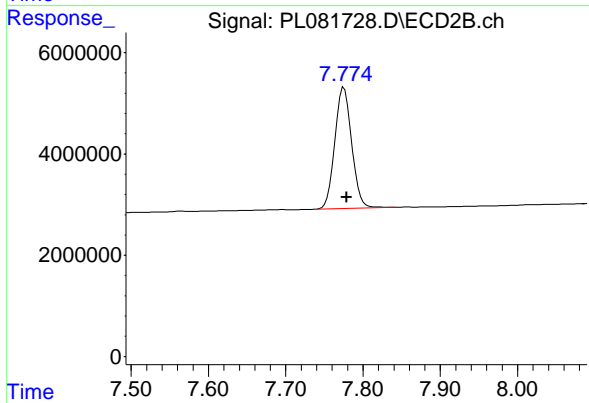
#1 Tetrachloro-m-xylene

R.T.: 2.658 min
 Delta R.T.: 0.003 min
 Response: 33592671
 Conc: 16.83 ng/ml



#28 Decachlorobiphenyl

R.T.: 8.750 min
 Delta R.T.: -0.010 min
 Response: 31437023
 Conc: 17.57 ng/ml



#28 Decachlorobiphenyl

R.T.: 7.775 min
 Delta R.T.: -0.003 min
 Response: 36158099
 Conc: 18.23 ng/ml