

Data Path : Z:\pestpcbsrv\HPCHEM1\ECD_L\Data\PL032620\
 Data File : PL057602.D
 Signal(s) : Signal #1: ECD1A.ch Signal #2: ECD2B.ch
 Acq On : 26 Mar 2020 21:43
 Operator : AJ\MA
 Sample : PEM
 Misc :
 ALS Vial : 3 Sample Multiplier: 1

Instrument :
 ECD_L
 ClientSampleId :

Integration File signal 1: autoint1.e
 Integration File signal 2: autoint2.e
 Quant Time: Mar 27 01:17:21 2020
 Quant Method : Z:\pestpcbsrv\HPCHEM1\ECD_L\methods\PL031420.M
 Quant Title : GC Extractables
 QLast Update : Mon Mar 16 09:40:37 2020
 Response via : Initial Calibration
 Integrator: ChemStation

Volume Inj. : 1 µl
 Signal #1 Phase : ZB-MR2 Signal #2 Phase: ZB-MR1
 Signal #1 Info : 30M x 0.32mm x0.2 Signal #2 Info : 30M x 0.32mm x0.5µm

	Compound	RT#1	RT#2	Resp#1	Resp#2	ng/ml	ng/ml

System Monitoring Compounds							
1)	SA Tetrachlo...	3.458	3.957	198.2E6	46164343	21.382	21.278
28)	SA Decachlor...	8.206	8.979	178.2E6	47893083	16.843	21.599 #
Target Compounds							
2)	A alpha-BHC	3.895	4.344	152.3E6	30606380	9.558	9.529
3)	MA gamma-BHC...	4.179	4.626	131.8E6	30202059	9.171	9.626
4)	MA Heptachlor	0.000	5.100f	0	2077671	N.D.	0.660 #
5)	MB Aldrin	4.723	0.000	1355798	0	0.098	N.D. #
6)	B beta-BHC	4.430	4.800	62757340	17739626	10.675	12.299
8)	B Heptachlo...	5.194f	0.000	1237996	0	0.097	N.D. #
9)	A Endosulfan I	5.500	0.000	628463	0	0.053	N.D. #
12)	B 4,4'-DDE	5.618	0.000	2825122	0	0.227	N.D. #
13)	MA Dieldrin	5.750	0.000	587274	0	0.047	N.D. #
14)	MA Endrin	6.008	6.642	531.0E6	117.4E6	46.449	48.650
16)	A 4,4'-DDD	6.134	6.768	17081642	5096539	1.743	2.232 #
17)	MA 4,4'-DDT	6.374	7.065	950.5E6	221.6E6	95.313	97.275
18)	B Endrin al...	6.447	0.000	5291691	0	0.573	N.D. #
20)	A Methoxychlor	6.919	7.525	1146.6E6	282.3E6	213.688	217.037
21)	B Endrin ke...	7.151	7.665	23695535	4408568	2.096	1.703
22)	Mirex	7.332	0.000	760722	0	0.094	N.D. #
23)	Chlordane-1	4.356f	0.000	2142522	0	6.601	N.D. #
24)	Chlordane-2	4.838	0.000	344198	0	0.947	N.D. #

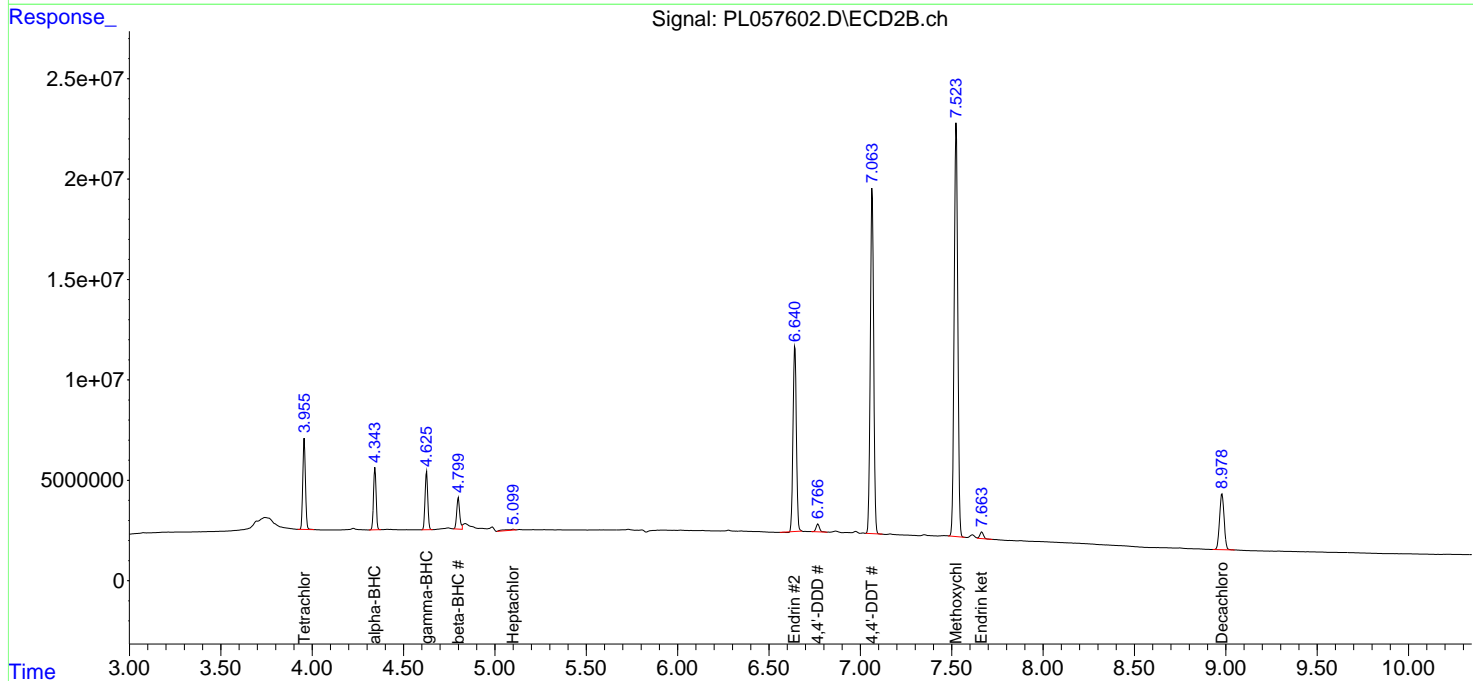
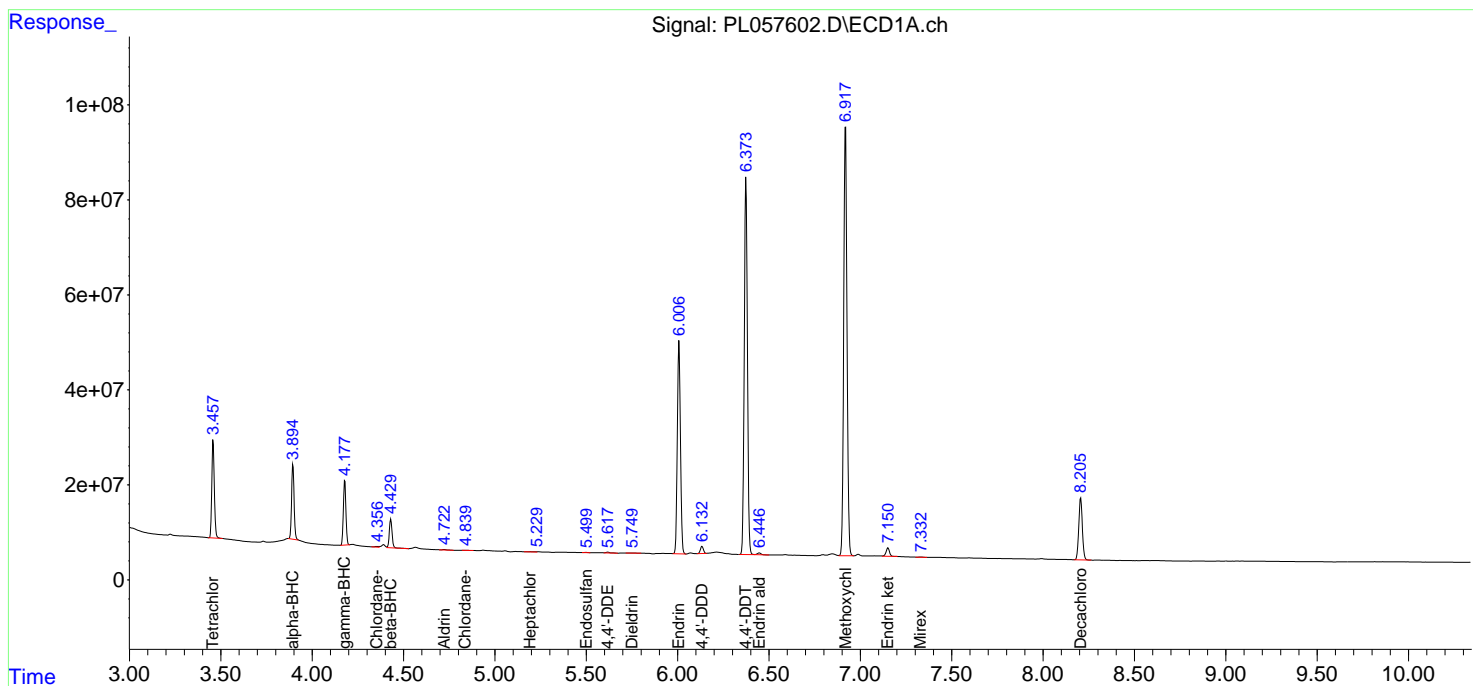
(f)=RT Delta > 1/2 Window (#)=Amounts differ by > 25% (m)=manual int.

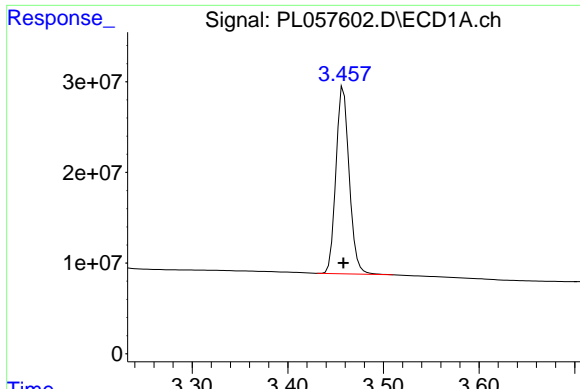
Data Path : Z:\pestpcbsrv\HPCHEM1\ECD_L\Data\PL032620\
 Data File : PL057602.D
 Signal(s) : Signal #1: ECD1A.ch Signal #2: ECD2B.ch
 Acq On : 26 Mar 2020 21:43
 Operator : AJ\MA
 Sample : PEM
 Misc :
 ALS Vial : 3 Sample Multiplier: 1

Instrument :
 ECD_L
 ClientSampled :

Integration File signal 1: autoint1.e
 Integration File signal 2: autoint2.e
 Quant Time: Mar 27 01:17:21 2020
 Quant Method : Z:\pestpcbsrv\HPCHEM1\ECD_L\methods\PL031420.M
 Quant Title : GC Extractables
 QLast Update : Mon Mar 16 09:40:37 2020
 Response via : Initial Calibration
 Integrator: ChemStation

Volume Inj. : 1 µl
 Signal #1 Phase : ZB-MR2 Signal #2 Phase: ZB-MR1
 Signal #1 Info : 30M x 0.32mm x0.2 Signal #2 Info : 30M x 0.32mm x0.5µm

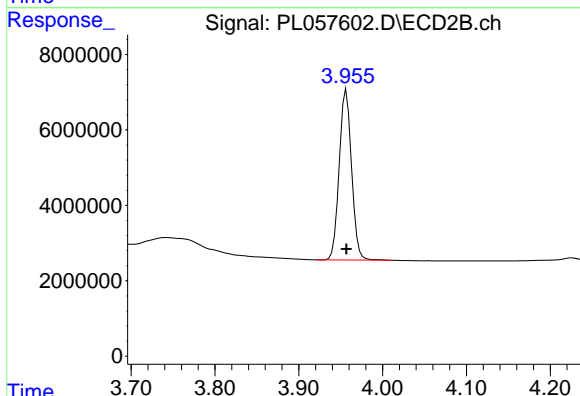




#1 Tetrachloro-m-xylene

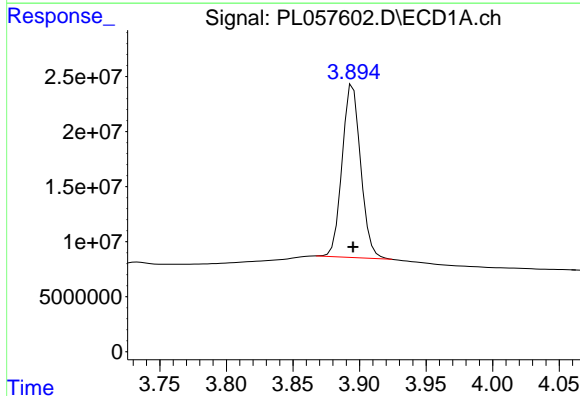
R.T.: 3.458 min
 Delta R.T.: 0.000 min
 Response: 198196482
 Conc: 21.38 ng/ml

Instrument :
 ECD_L
 ClientSampled :



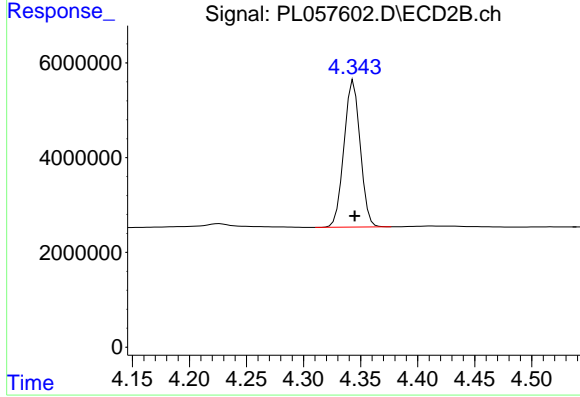
#1 Tetrachloro-m-xylene

R.T.: 3.957 min
 Delta R.T.: 0.000 min
 Response: 46164343
 Conc: 21.28 ng/ml



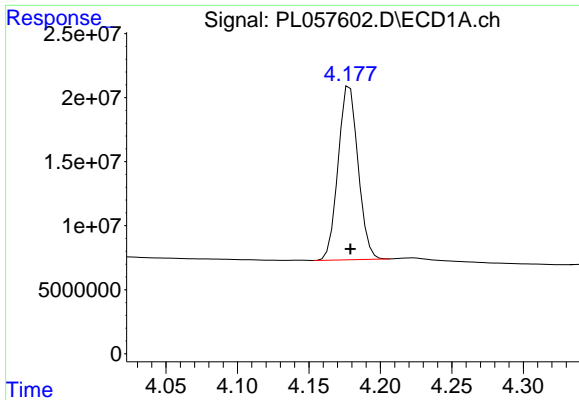
#2 alpha-BHC

R.T.: 3.895 min
 Delta R.T.: 0.000 min
 Response: 152253561
 Conc: 9.56 ng/ml



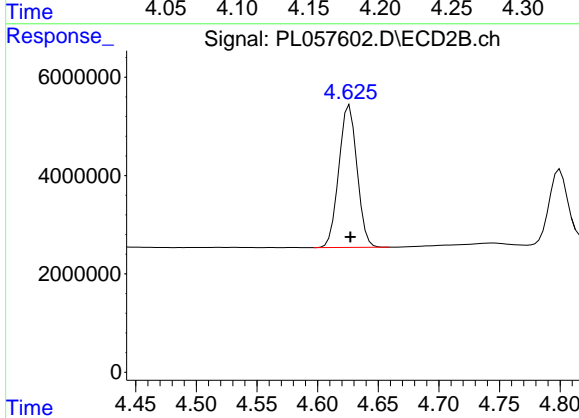
#2 alpha-BHC

R.T.: 4.344 min
 Delta R.T.: -0.001 min
 Response: 30606380
 Conc: 9.53 ng/ml

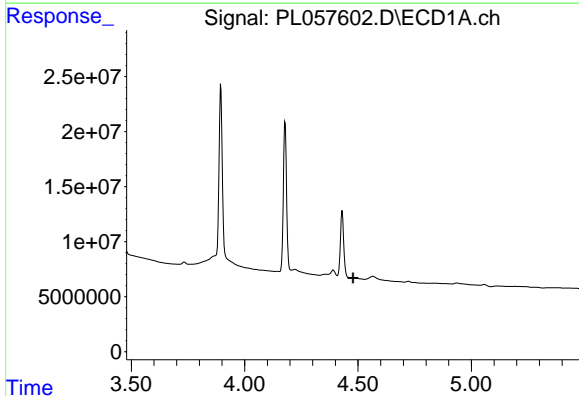


#3 gamma-BHC (Lindane)
 R.T.: 4.179 min
 Delta R.T.: 0.000 min
 Response: 131811378
 Conc: 9.17 ng/ml

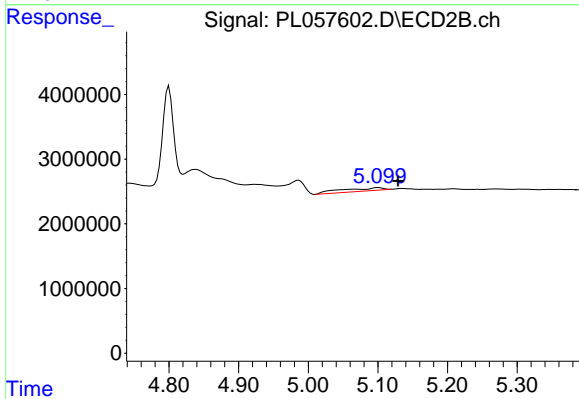
Instrument :
 ECD_L
 ClientSampleId :



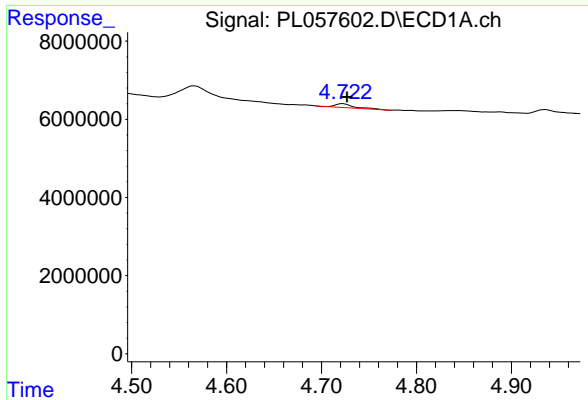
#3 gamma-BHC (Lindane)
 R.T.: 4.626 min
 Delta R.T.: 0.000 min
 Response: 30202059
 Conc: 9.63 ng/ml



#4 Heptachlor
 R.T.: 0.000 min
 Exp R.T. : 4.479 min
 Response: 0
 Conc: N.D.

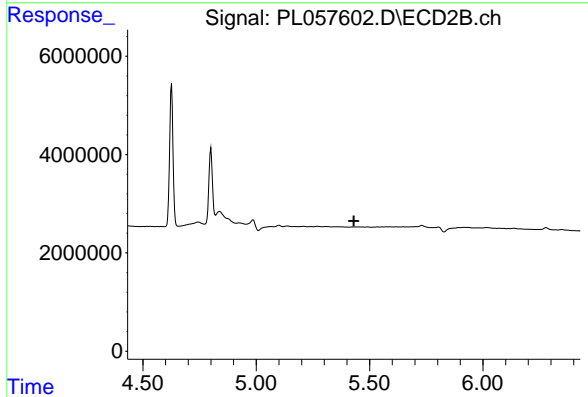


#4 Heptachlor
 R.T.: 5.100 min
 Delta R.T.: -0.029 min
 Response: 2077671
 Conc: 0.66 ng/ml

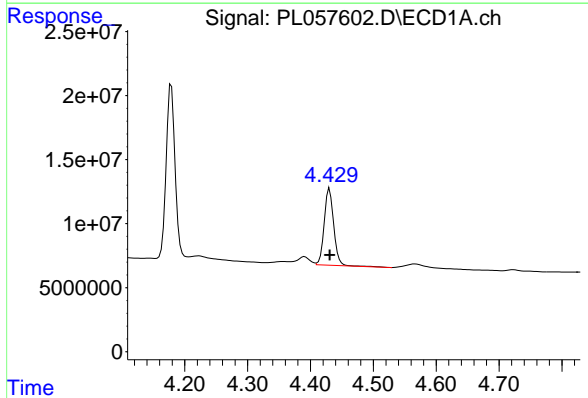


#5 Aldrin
 R.T.: 4.723 min
 Delta R.T.: -0.004 min
 Response: 1355798
 Conc: 0.10 ng/ml

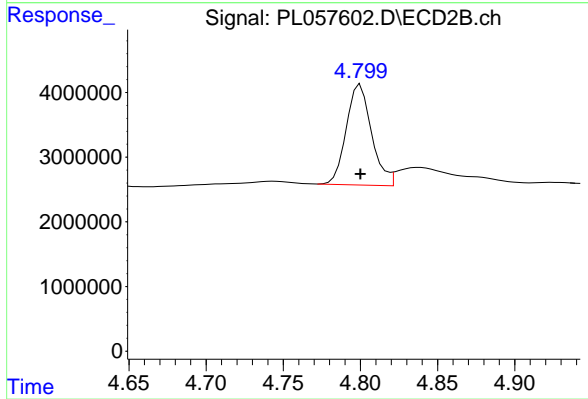
Instrument :
 ECD_L
 ClientSampled :



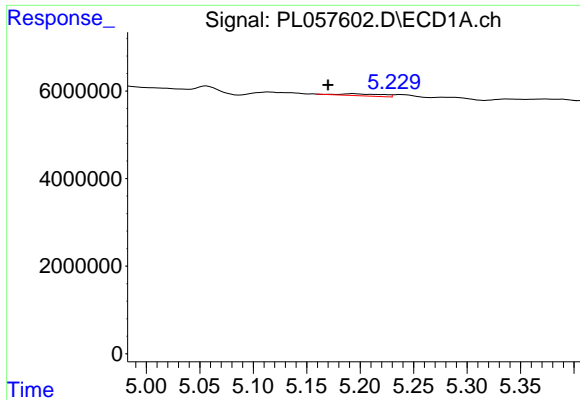
#5 Aldrin
 R.T.: 0.000 min
 Exp R.T. : 5.431 min
 Response: 0
 Conc: N.D.



#6 beta-BHC
 R.T.: 4.430 min
 Delta R.T.: 0.000 min
 Response: 62757340
 Conc: 10.67 ng/ml

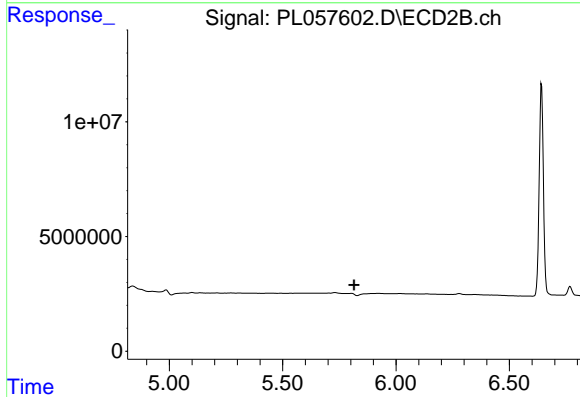


#6 beta-BHC
 R.T.: 4.800 min
 Delta R.T.: 0.000 min
 Response: 17739626
 Conc: 12.30 ng/ml

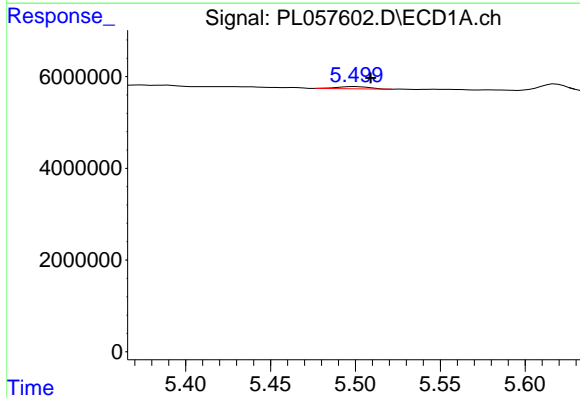


#8 Heptachlor epoxide
 R.T.: 5.194 min
 Delta R.T.: 0.024 min
 Response: 1237996
 Conc: 0.10 ng/ml

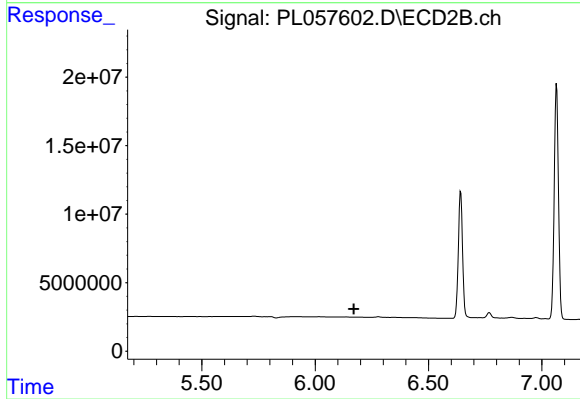
Instrument :
 ECD_L
 ClientSampled :



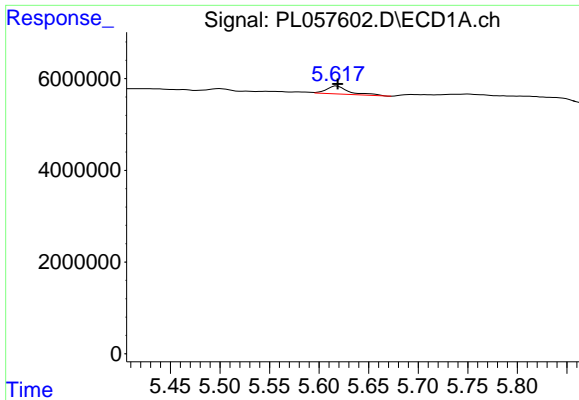
#8 Heptachlor epoxide
 R.T.: 0.000 min
 Exp R.T. : 5.815 min
 Response: 0
 Conc: N.D.



#9 Endosulfan I
 R.T.: 5.500 min
 Delta R.T.: -0.009 min
 Response: 628463
 Conc: 0.05 ng/ml

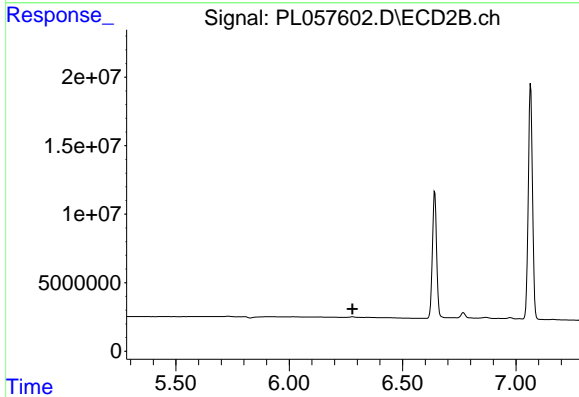


#9 Endosulfan I
 R.T.: 0.000 min
 Exp R.T. : 6.170 min
 Response: 0
 Conc: N.D.

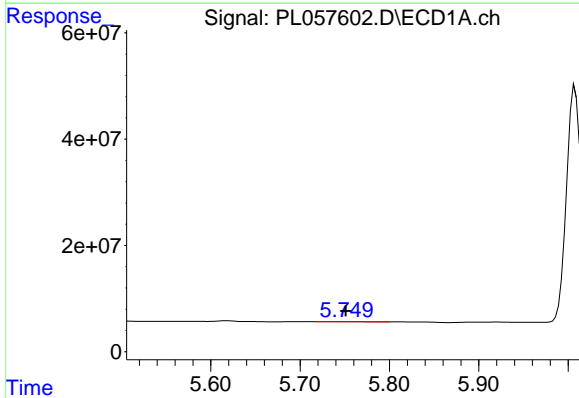


#12 4,4'-DDE
 R.T.: 5.618 min
 Delta R.T.: 0.000 min
 Response: 2825122
 Conc: 0.23 ng/ml

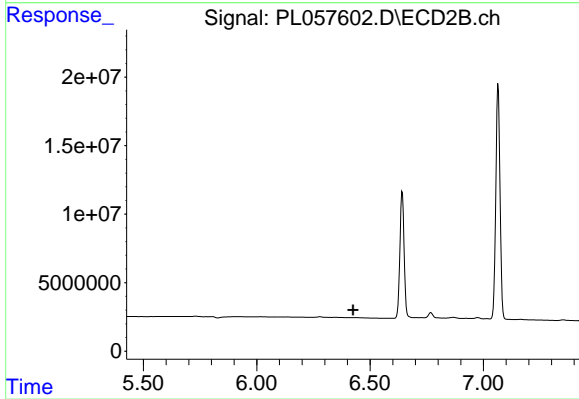
Instrument :
 ECD_L
 ClientSampled :



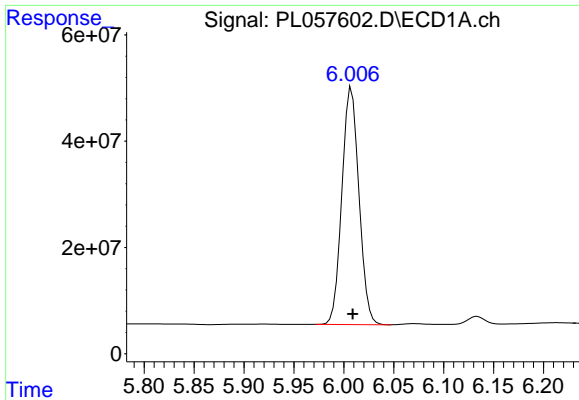
#12 4,4'-DDE
 R.T.: 0.000 min
 Exp R.T. : 6.280 min
 Response: 0
 Conc: N.D.



#13 Dieldrin
 R.T.: 5.750 min
 Delta R.T.: -0.001 min
 Response: 587274
 Conc: 0.05 ng/ml

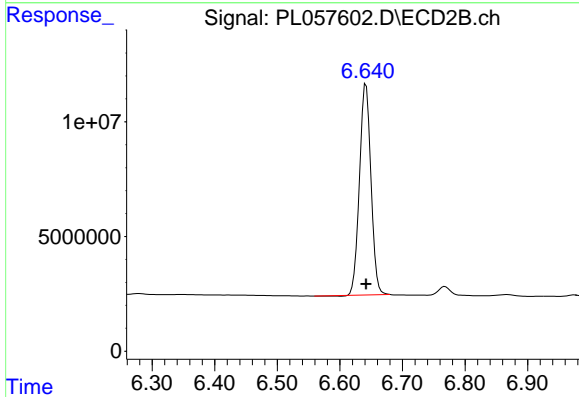


#13 Dieldrin
 R.T.: 0.000 min
 Exp R.T. : 6.425 min
 Response: 0
 Conc: N.D.

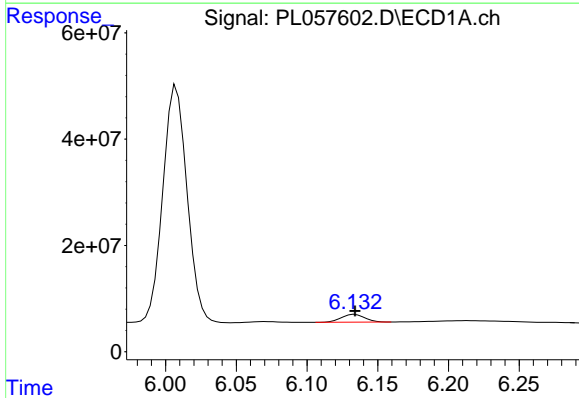


#14 Endrin
 R.T.: 6.008 min
 Delta R.T.: -0.001 min
 Response: 530979597
 Conc: 46.45 ng/ml

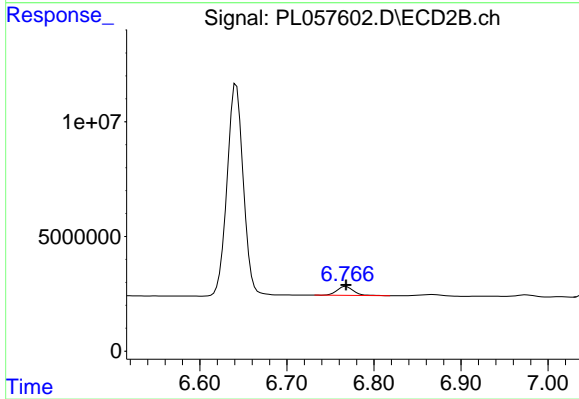
Instrument :
 ECD_L
 ClientSampled :



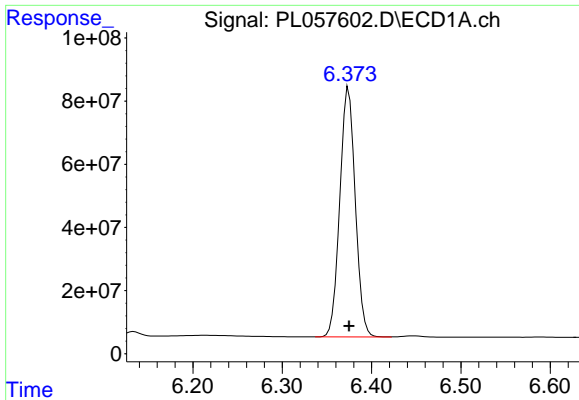
#14 Endrin
 R.T.: 6.642 min
 Delta R.T.: 0.000 min
 Response: 117381780
 Conc: 48.65 ng/ml



#16 4,4'-DDD
 R.T.: 6.134 min
 Delta R.T.: 0.000 min
 Response: 17081642
 Conc: 1.74 ng/ml



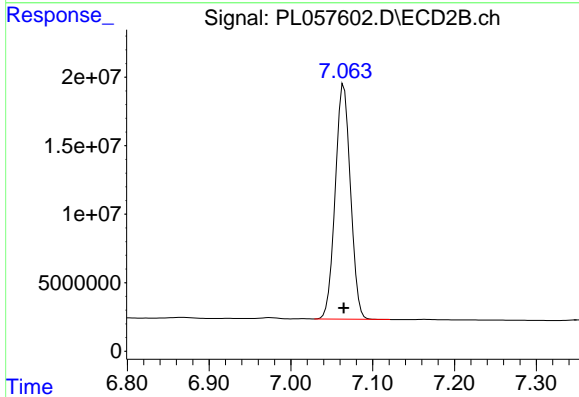
#16 4,4'-DDD
 R.T.: 6.768 min
 Delta R.T.: 0.000 min
 Response: 5096539
 Conc: 2.23 ng/ml



#17 4,4'-DDT

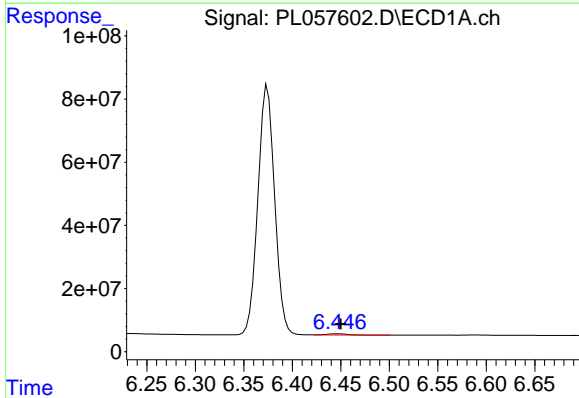
R.T.: 6.374 min
 Delta R.T.: 0.000 min
 Response: 950536507
 Conc: 95.31 ng/ml

Instrument :
 ECD_L
 ClientSampled :



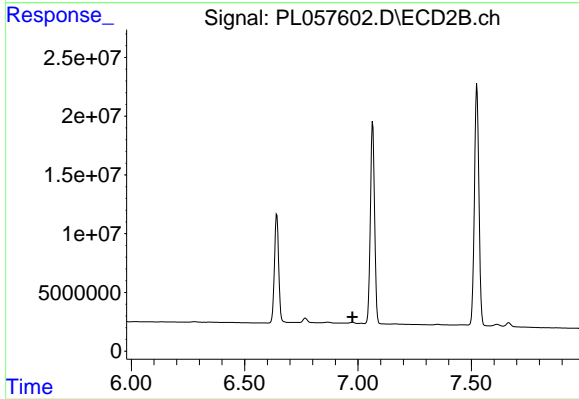
#17 4,4'-DDT

R.T.: 7.065 min
 Delta R.T.: 0.000 min
 Response: 221558608
 Conc: 97.27 ng/ml



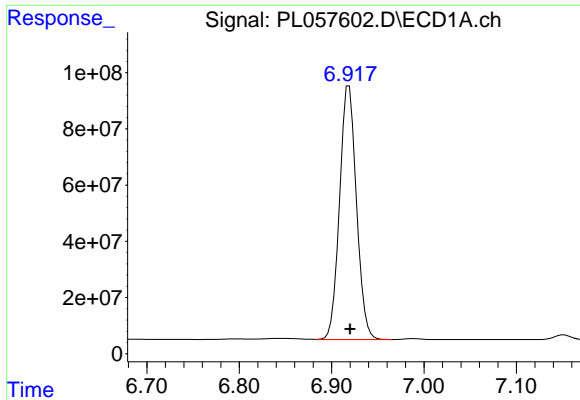
#18 Endrin aldehyde

R.T.: 6.447 min
 Delta R.T.: -0.003 min
 Response: 5291691
 Conc: 0.57 ng/ml



#18 Endrin aldehyde

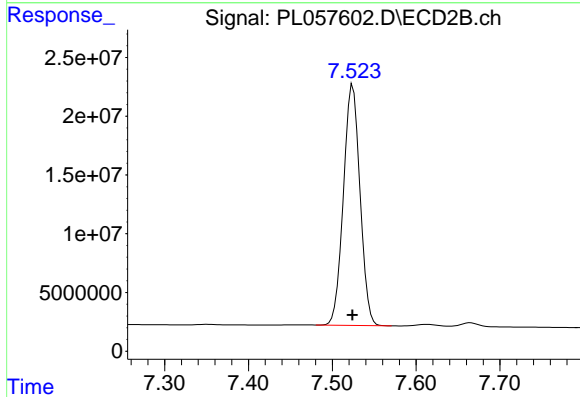
R.T.: 0.000 min
 Exp R.T. : 6.976 min
 Response: 0
 Conc: N.D.



#20 Methoxychlor

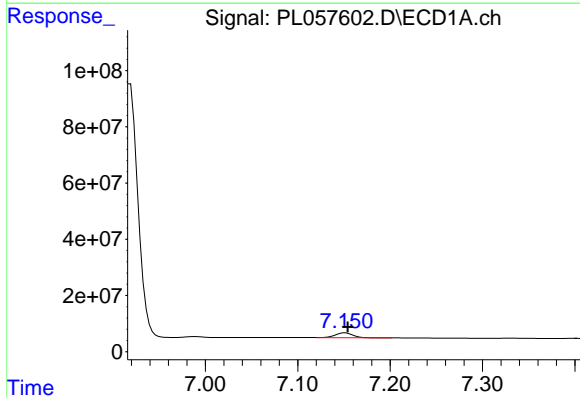
R.T.: 6.919 min
 Delta R.T.: -0.001 min
 Response: 1146611342
 Conc: 213.69 ng/ml

Instrument :
 ECD_L
 ClientSampleId :



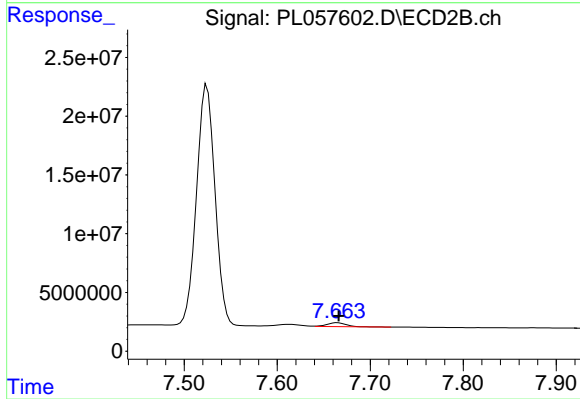
#20 Methoxychlor

R.T.: 7.525 min
 Delta R.T.: 0.000 min
 Response: 282274486
 Conc: 217.04 ng/ml



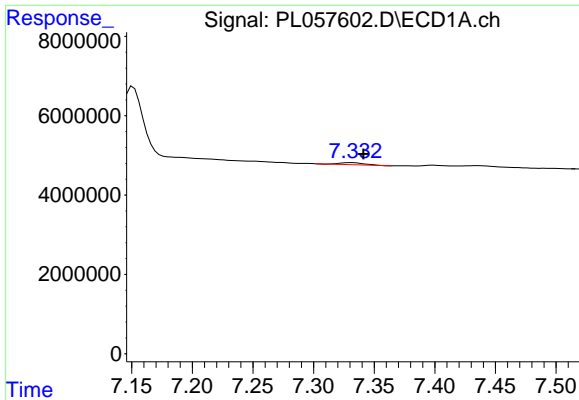
#21 Endrin ketone

R.T.: 7.151 min
 Delta R.T.: -0.003 min
 Response: 23695535
 Conc: 2.10 ng/ml



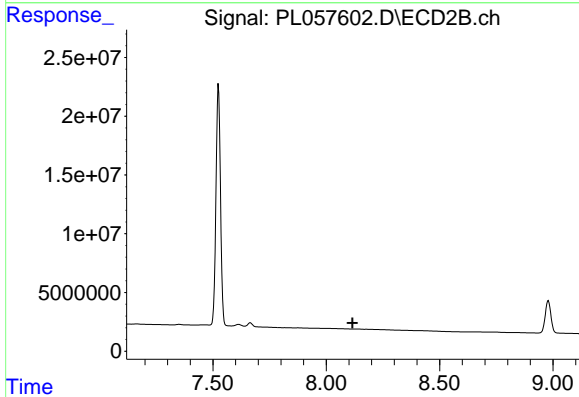
#21 Endrin ketone

R.T.: 7.665 min
 Delta R.T.: -0.002 min
 Response: 4408568
 Conc: 1.70 ng/ml

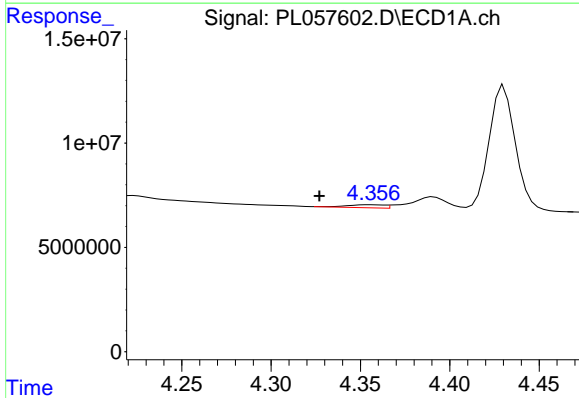


#22 Mirex
 R.T.: 7.332 min
 Delta R.T.: -0.009 min
 Response: 760722
 Conc: 0.09 ng/ml

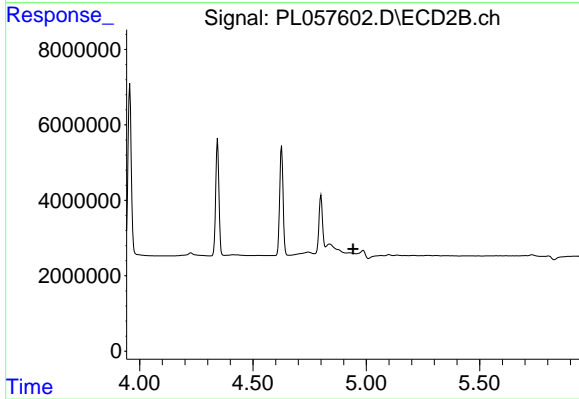
Instrument :
 ECD_L
 ClientSampled :



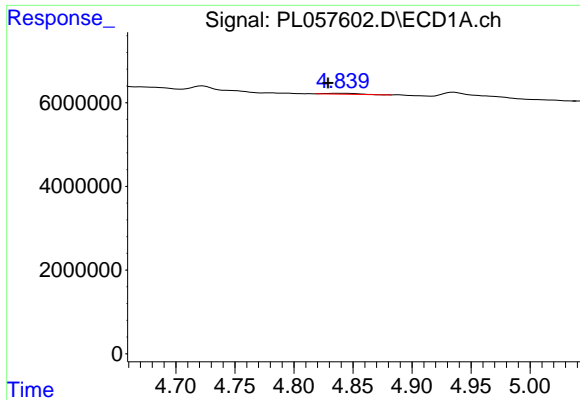
#22 Mirex
 R.T.: 0.000 min
 Exp R.T. : 8.116 min
 Response: 0
 Conc: N.D.



#23 Chlordane-1
 R.T.: 4.356 min
 Delta R.T.: 0.029 min
 Response: 2142522
 Conc: 6.60 ng/ml

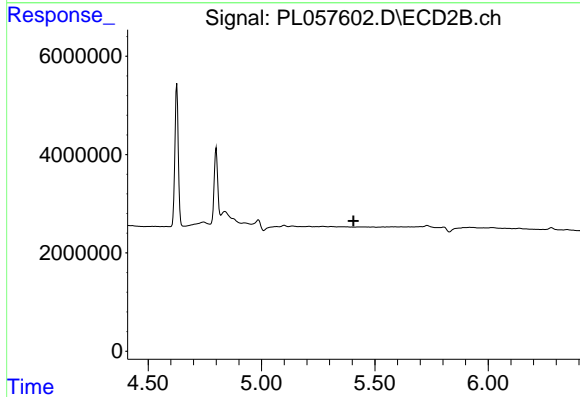


#23 Chlordane-1
 R.T.: 0.000 min
 Exp R.T. : 4.941 min
 Response: 0
 Conc: N.D.

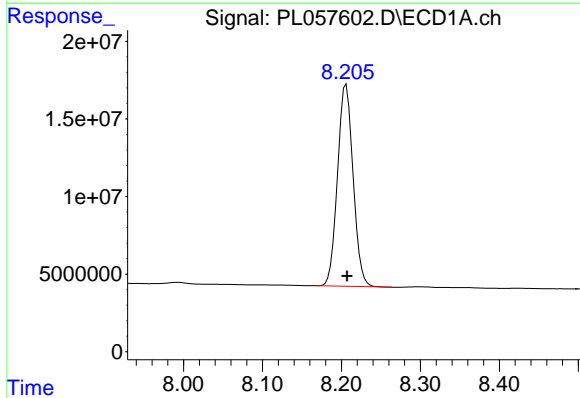


#24 Chlordane-2
 R.T.: 4.838 min
 Delta R.T.: 0.009 min
 Response: 344198
 Conc: 0.95 ng/ml

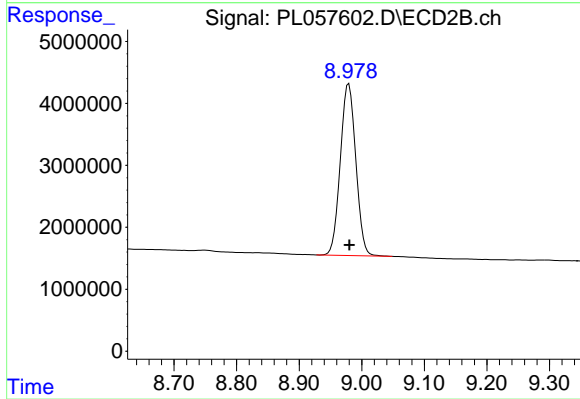
Instrument :
 ECD_L
 ClientSampleId :



#24 Chlordane-2
 R.T.: 0.000 min
 Exp R.T. : 5.406 min
 Response: 0
 Conc: N.D.



#28 Decachlorobiphenyl
 R.T.: 8.206 min
 Delta R.T.: -0.001 min
 Response: 178216463
 Conc: 16.84 ng/ml



#28 Decachlorobiphenyl
 R.T.: 8.979 min
 Delta R.T.: 0.000 min
 Response: 47893083
 Conc: 21.60 ng/ml