

Data Path : Z:\pestpcbsrv\HPCHEM1\ECD_L\Data\PL032620\
 Data File : PL057612.D
 Signal(s) : Signal #1: ECD1A.ch Signal #2: ECD2B.ch
 Acq On : 27 Mar 2020 00:19
 Operator : AJ\MA
 Sample : L2035-03
 Misc :
 ALS Vial : 42 Sample Multiplier: 1

Instrument :
 ECD_L
 ClientSampleId :
 FK-GF-02-054-B

Integration File signal 1: autoint1.e
 Integration File signal 2: autoint2.e
 Quant Time: Mar 27 01:27:49 2020
 Quant Method : Z:\pestpcbsrv\HPCHEM1\ECD_L\methods\PL031420.M
 Quant Title : GC Extractables
 QLast Update : Mon Mar 16 09:40:37 2020
 Response via : Initial Calibration
 Integrator: ChemStation

Volume Inj. : 1 µl
 Signal #1 Phase : ZB-MR2 Signal #2 Phase: ZB-MR1
 Signal #1 Info : 30M x 0.32mm x0.2 Signal #2 Info : 30M x 0.32mm x0.5µm

Compound	RT#1	RT#2	Resp#1	Resp#2	ng/ml	ng/ml

System Monitoring Compounds						
1) SA Tetrachlo...	3.458	3.957	123.9E6	29096437	13.370	13.411
28) SA Decachlor...	8.207	8.979	134.8E6	31787739	12.744	14.336
Target Compounds						
2) A alpha-BHC	0.000	4.351	0	919602	N.D.	0.286 #
4) MA Heptachlor	4.479	5.129	51504383	21718635	3.468	6.900 #
5) MB Aldrin	4.728	5.406f	16609375	18300502	1.204	5.999 #
7) B delta-BHC	4.635	0.000	4034260	0	0.287	N.D. #
8) B Heptachlo...	0.000	5.805	0	1784194	N.D.	0.654 #
9) A Endosulfan I	5.490f	0.000	1240610	0	0.104	N.D. #
10) B gamma-Chl...	5.419f	6.048	215.8E6	26017411	16.545	8.441 #
11) B alpha-Chl...	5.455	6.122	105.7E6	85137070	8.179	27.352 #
12) B 4,4'-DDE	5.619	6.278	51656336	13760356	4.147	4.841
13) MA Dieldrin	5.745	0.000	6570894	0	0.521	N.D. #
14) MA Endrin	6.008	6.671f	3688523	931085	0.323	0.386
15) B Endosulfa...	6.291	0.000	49668997	0	4.573	N.D. #
16) A 4,4'-DDD	6.135	6.773	11504230	3066119	1.174	1.343
17) MA 4,4'-DDT	6.374	7.065	34907119	6243269	3.500	2.741
18) B Endrin al...	6.479f	0.000	6209848	0	0.672	N.D. #
19) B Endosulfa...	6.658	0.000	4982262	0	0.496	N.D. #
20) A Methoxychlor	6.905f	0.000	12496640	0	2.329	N.D. #
21) B Endrin ke...	7.179f	0.000	3745647	0	0.331	N.D. #
22) Mirex	7.344	0.000	976107	0	0.121	N.D. #
23) Chlordane-1	4.327	4.941	58332315	20405537	179.724	245.559 #
24) Chlordane-2	4.829	5.406	70475660	18300502	193.950	194.188
25) Chlordane-3	5.419f	6.048	215.8E6	26017411	191.322	68.611 #
26) Chlordane-4	5.455	6.122	105.7E6	85137070	110.254	186.013 #
27) Chlordane-5	6.291	6.921	49668997	6872921	136.507	85.767 #

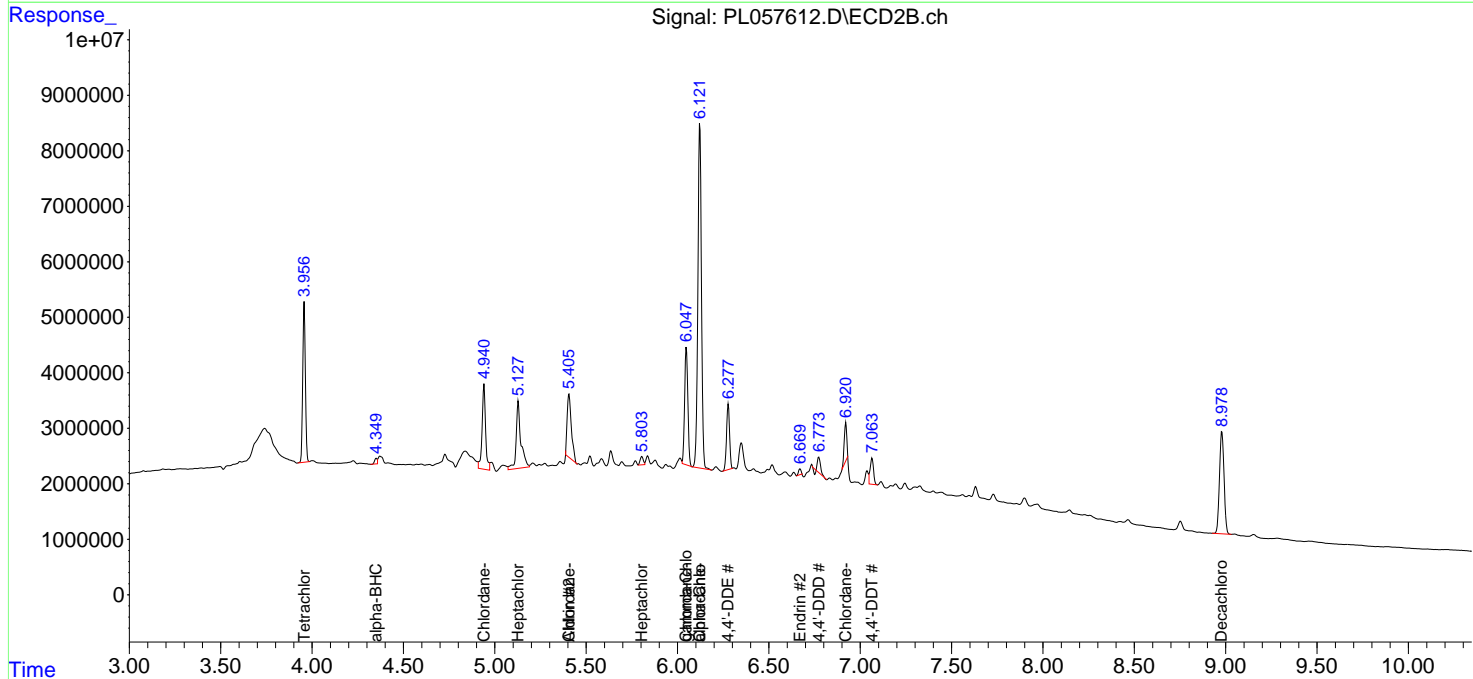
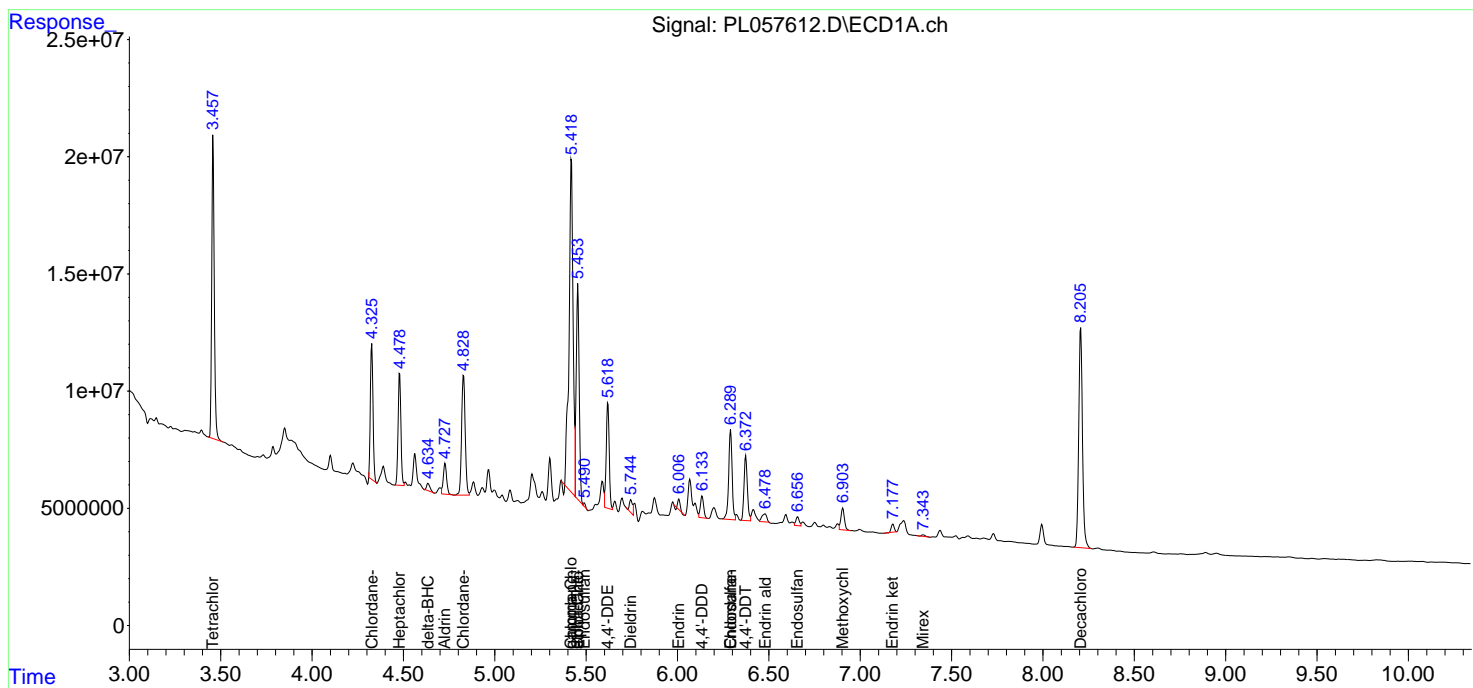
(f)=RT Delta > 1/2 Window (#)=Amounts differ by > 25% (m)=manual int.

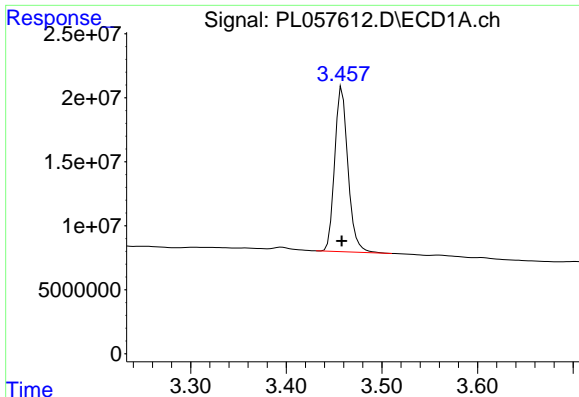
Data Path : Z:\pestpcbsrv\HPCHEM1\ECD_L\Data\PL032620\
 Data File : PL057612.D
 Signal(s) : Signal #1: ECD1A.ch Signal #2: ECD2B.ch
 Acq On : 27 Mar 2020 00:19
 Operator : AJ\MA
 Sample : L2035-03
 Misc :
 ALS Vial : 42 Sample Multiplier: 1

Instrument :
 ECD_L
 Client Sampled :
 FK-GF-02-054-B

Integration File signal 1: autoint1.e
 Integration File signal 2: autoint2.e
 Quant Time: Mar 27 01:27:49 2020
 Quant Method : Z:\pestpcbsrv\HPCHEM1\ECD_L\methods\PL031420.M
 Quant Title : GC Extractables
 QLast Update : Mon Mar 16 09:40:37 2020
 Response via : Initial Calibration
 Integrator: ChemStation

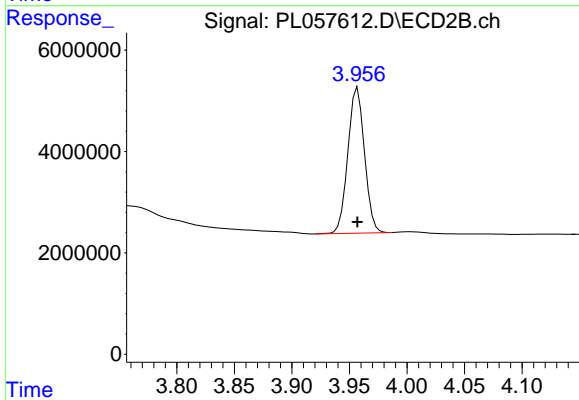
Volume Inj. : 1 µl
 Signal #1 Phase : ZB-MR2 Signal #2 Phase: ZB-MR1
 Signal #1 Info : 30M x 0.32mm x0.2 Signal #2 Info : 30M x 0.32mm x0.5µm



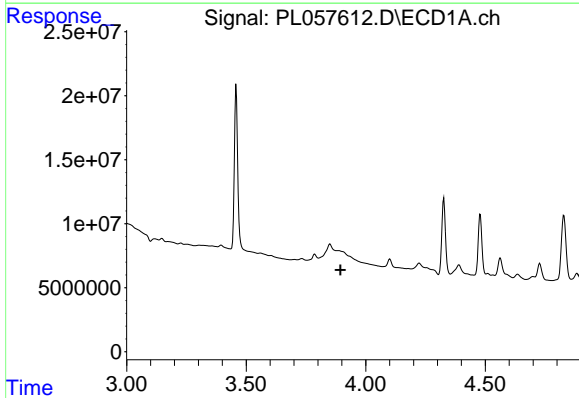


#1 Tetrachloro-m-xylene
 R.T.: 3.458 min
 Delta R.T.: 0.000 min
 Response: 123932576
 Conc: 13.37 ng/ml

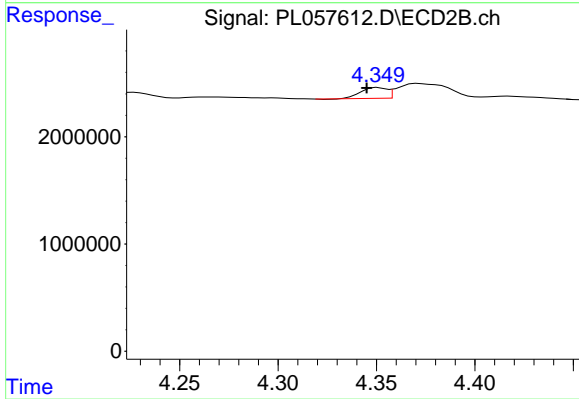
Instrument :
 ECD_L
 ClientSampleId :
 FK-GF-02-054-B



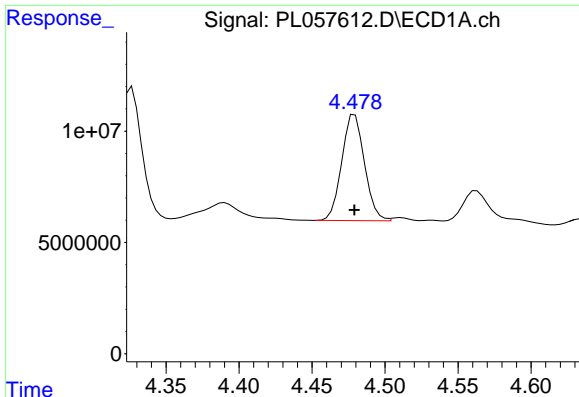
#1 Tetrachloro-m-xylene
 R.T.: 3.957 min
 Delta R.T.: 0.000 min
 Response: 29096437
 Conc: 13.41 ng/ml



#2 alpha-BHC
 R.T.: 0.000 min
 Exp R.T. : 3.895 min
 Response: 0
 Conc: N.D.



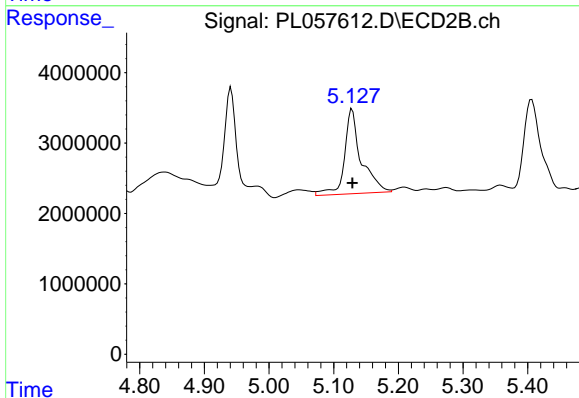
#2 alpha-BHC
 R.T.: 4.351 min
 Delta R.T.: 0.006 min
 Response: 919602
 Conc: 0.29 ng/ml



#4 Heptachlor

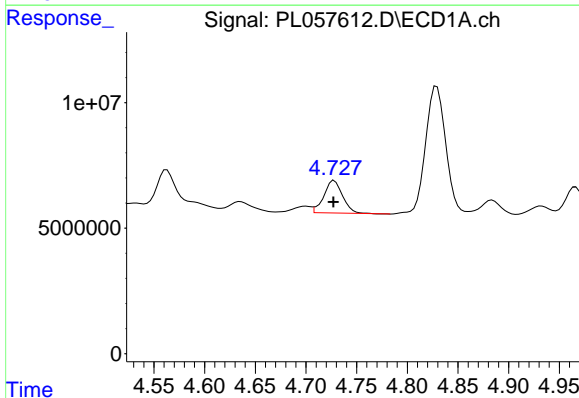
R.T.: 4.479 min
 Delta R.T.: 0.000 min
 Response: 51504383
 Conc: 3.47 ng/ml

Instrument :
 ECD_L
 ClientSampleId :
 FK-GF-02-054-B



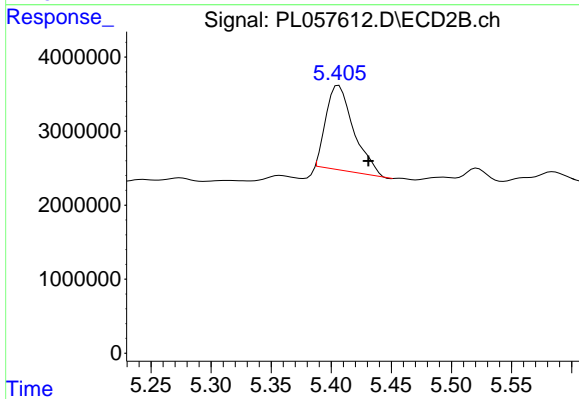
#4 Heptachlor

R.T.: 5.129 min
 Delta R.T.: 0.000 min
 Response: 21718635
 Conc: 6.90 ng/ml



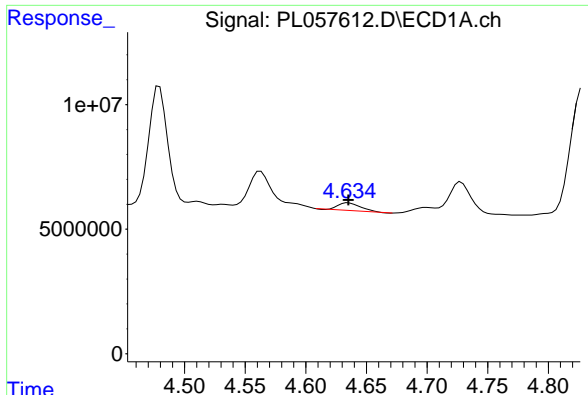
#5 Aldrin

R.T.: 4.728 min
 Delta R.T.: 0.000 min
 Response: 16609375
 Conc: 1.20 ng/ml



#5 Aldrin

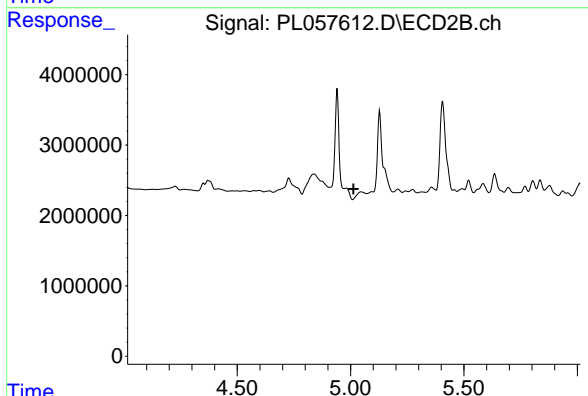
R.T.: 5.406 min
 Delta R.T.: -0.025 min
 Response: 18300502
 Conc: 6.00 ng/ml



#7 delta-BHC

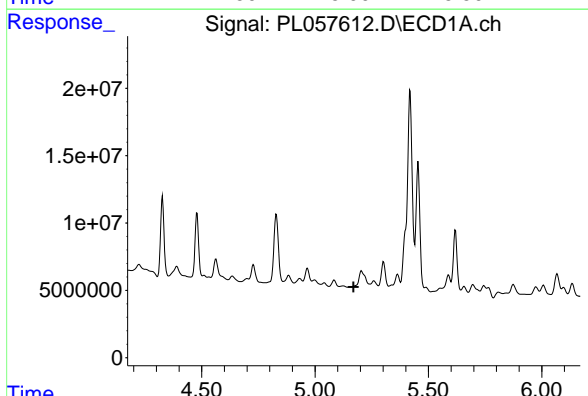
R.T.: 4.635 min
 Delta R.T.: 0.000 min
 Response: 4034260
 Conc: 0.29 ng/ml

Instrument :
 ECD_L
 ClientSampleId :
 FK-GF-02-054-B



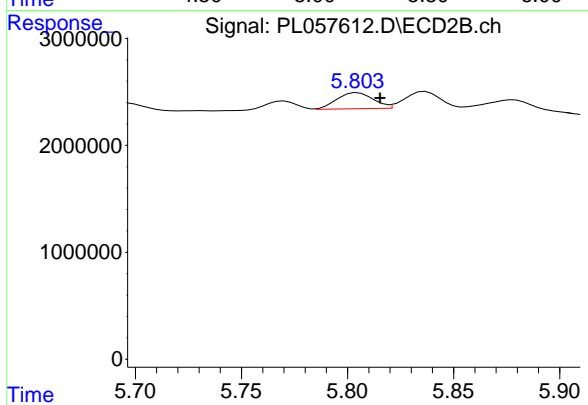
#7 delta-BHC

R.T.: 0.000 min
 Exp R.T. : 5.013 min
 Response: 0
 Conc: N.D.



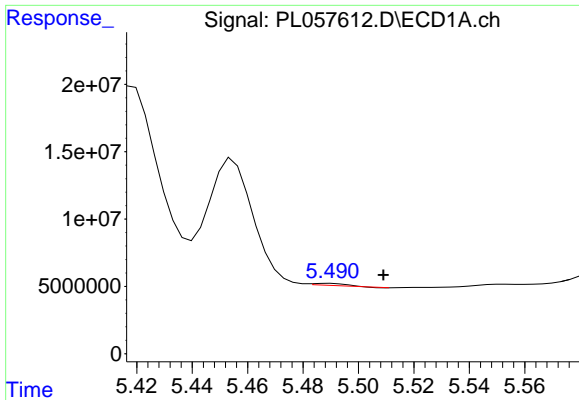
#8 Heptachlor epoxide

R.T.: 0.000 min
 Exp R.T. : 5.170 min
 Response: 0
 Conc: N.D.



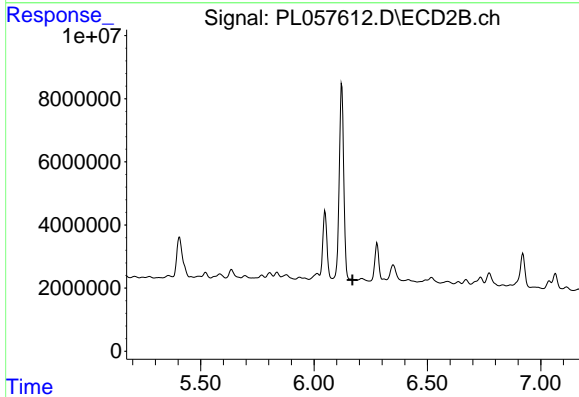
#8 Heptachlor epoxide

R.T.: 5.805 min
 Delta R.T.: -0.010 min
 Response: 1784194
 Conc: 0.65 ng/ml

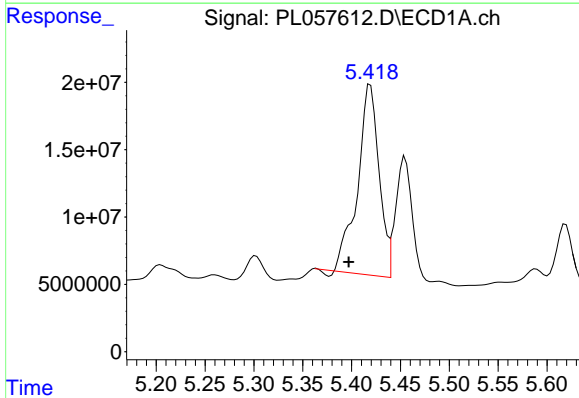


#9 Endosulfan I
 R.T.: 5.490 min
 Delta R.T.: -0.019 min
 Response: 1240610
 Conc: 0.10 ng/ml

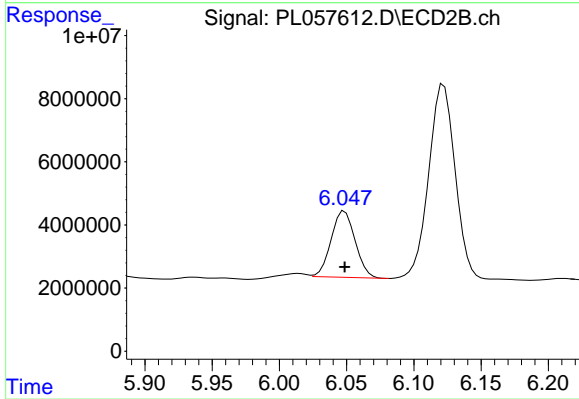
Instrument :
 ECD_L
 ClientSampleId :
 FK-GF-02-054-B



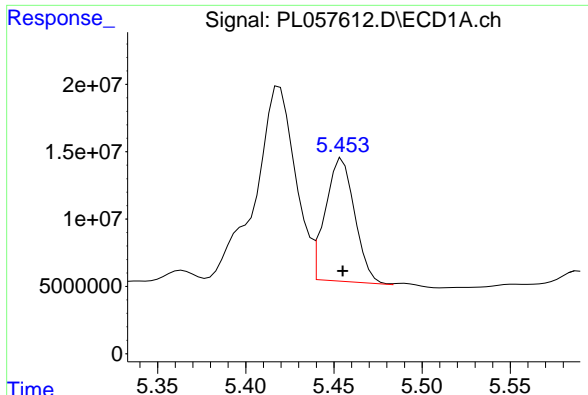
#9 Endosulfan I
 R.T.: 0.000 min
 Exp R.T. : 6.170 min
 Response: 0
 Conc: N.D.



#10 gamma-Chlordane
 R.T.: 5.419 min
 Delta R.T.: 0.022 min
 Response: 215750454
 Conc: 16.55 ng/ml

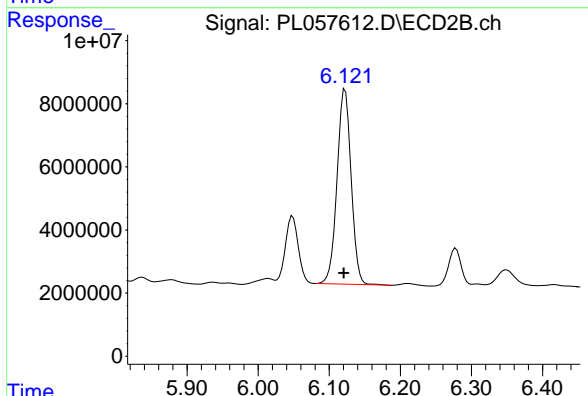


#10 gamma-Chlordane
 R.T.: 6.048 min
 Delta R.T.: 0.000 min
 Response: 26017411
 Conc: 8.44 ng/ml

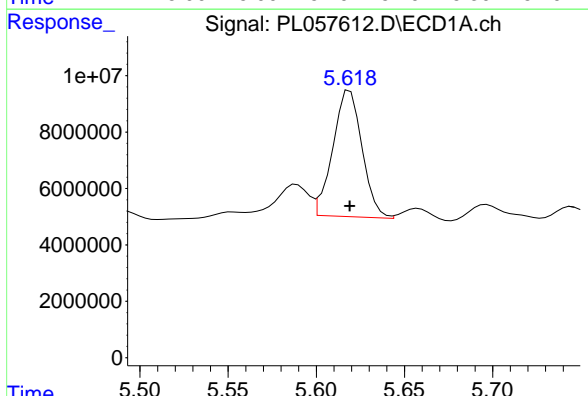


#11 alpha-Chlordane
 R.T.: 5.455 min
 Delta R.T.: 0.000 min
 Response: 105696956
 Conc: 8.18 ng/ml

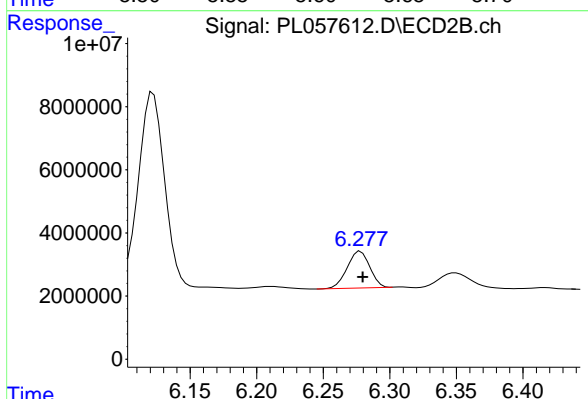
Instrument :
 ECD_L
 ClientSampleId :
 FK-GF-02-054-B



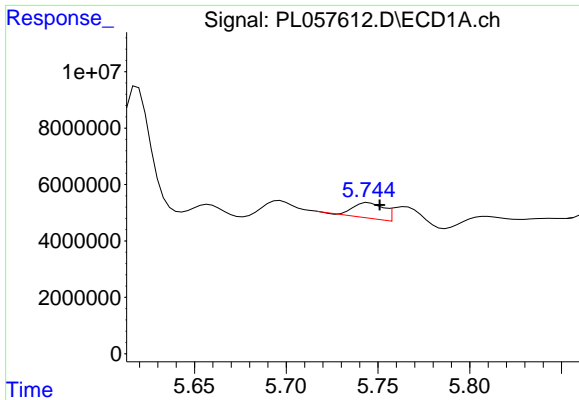
#11 alpha-Chlordane
 R.T.: 6.122 min
 Delta R.T.: 0.002 min
 Response: 85137070
 Conc: 27.35 ng/ml



#12 4,4'-DDE
 R.T.: 5.619 min
 Delta R.T.: 0.000 min
 Response: 51656336
 Conc: 4.15 ng/ml

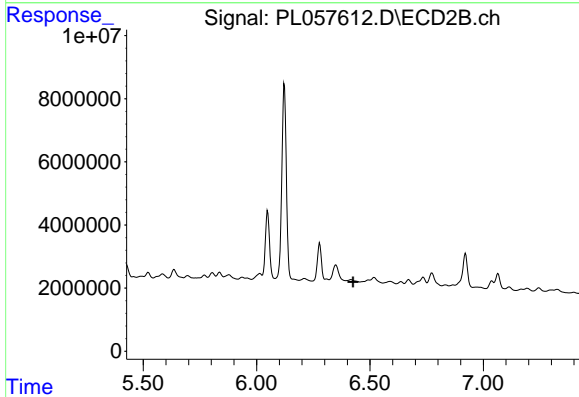


#12 4,4'-DDE
 R.T.: 6.278 min
 Delta R.T.: -0.002 min
 Response: 13760356
 Conc: 4.84 ng/ml

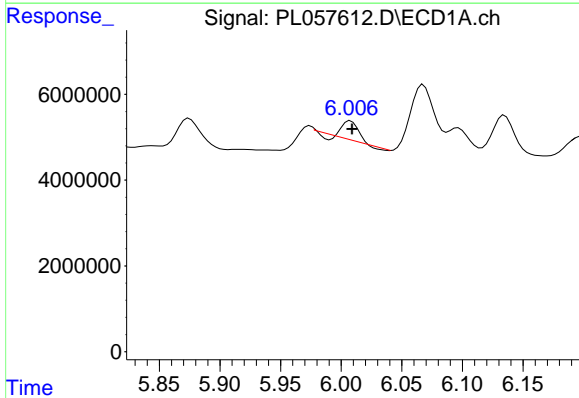


#13 Dieldrin
 R.T.: 5.745 min
 Delta R.T.: -0.006 min
 Response: 6570894
 Conc: 0.52 ng/ml

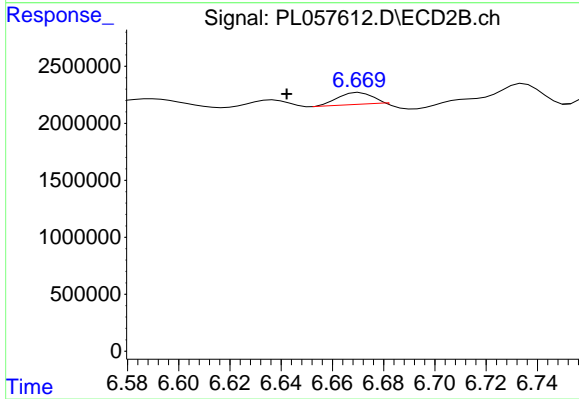
Instrument :
 ECD_L
 ClientSampleId :
 FK-GF-02-054-B



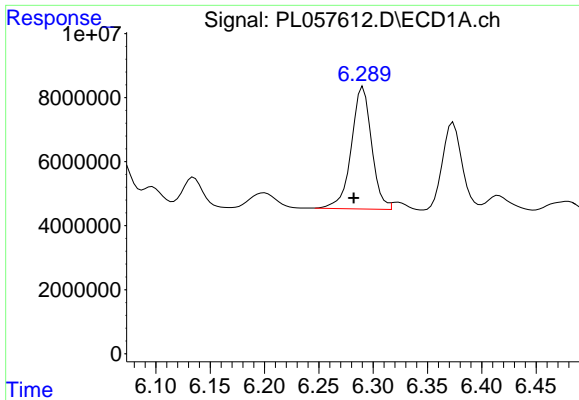
#13 Dieldrin
 R.T.: 0.000 min
 Exp R.T. : 6.425 min
 Response: 0
 Conc: N.D.



#14 Endrin
 R.T.: 6.008 min
 Delta R.T.: -0.001 min
 Response: 3688523
 Conc: 0.32 ng/ml

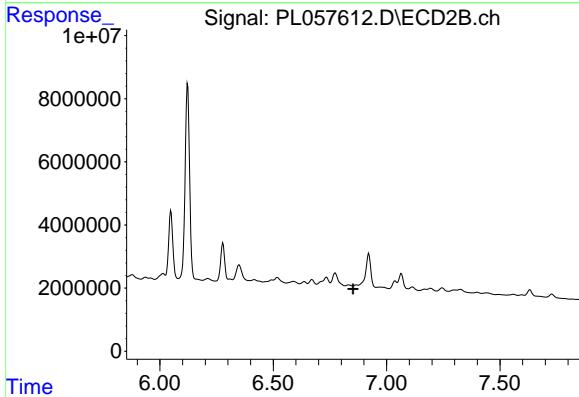


#14 Endrin
 R.T.: 6.671 min
 Delta R.T.: 0.029 min
 Response: 931085
 Conc: 0.39 ng/ml

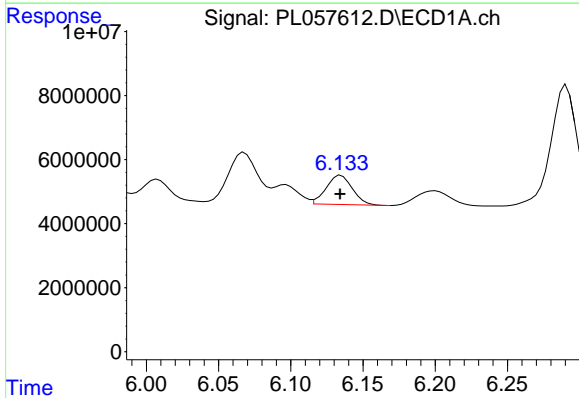


#15 Endosulfan II
 R.T.: 6.291 min
 Delta R.T.: 0.009 min
 Response: 49668997
 Conc: 4.57 ng/ml

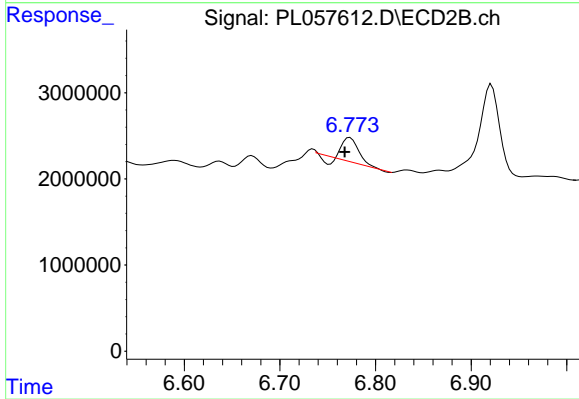
Instrument :
 ECD_L
 ClientSampleId :
 FK-GF-02-054-B



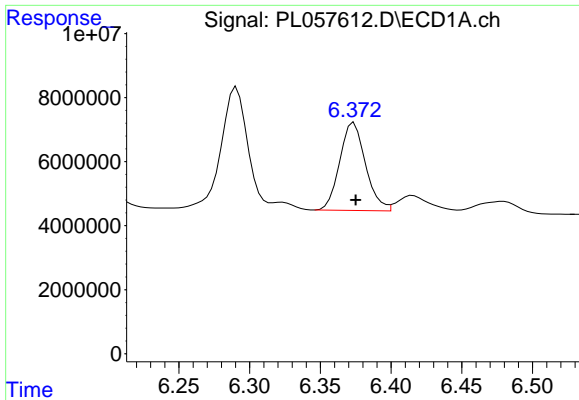
#15 Endosulfan II
 R.T.: 0.000 min
 Exp R.T. : 6.852 min
 Response: 0
 Conc: N.D.



#16 4,4'-DDD
 R.T.: 6.135 min
 Delta R.T.: 0.000 min
 Response: 11504230
 Conc: 1.17 ng/ml

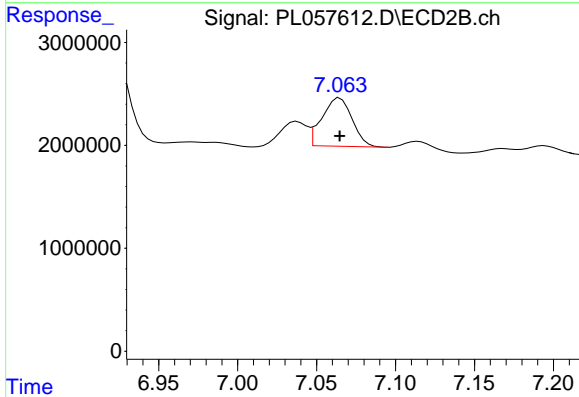


#16 4,4'-DDD
 R.T.: 6.773 min
 Delta R.T.: 0.005 min
 Response: 3066119
 Conc: 1.34 ng/ml

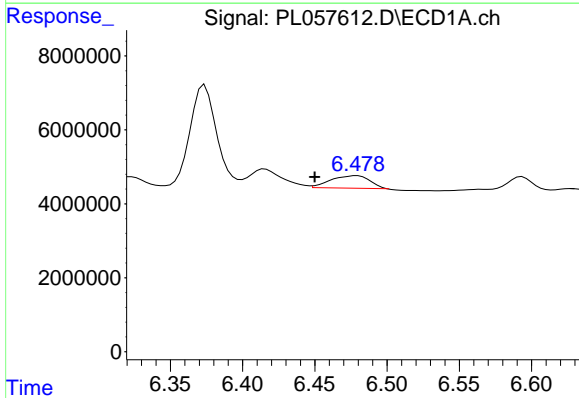


#17 4,4'-DDT
 R.T.: 6.374 min
 Delta R.T.: -0.001 min
 Response: 34907119
 Conc: 3.50 ng/ml

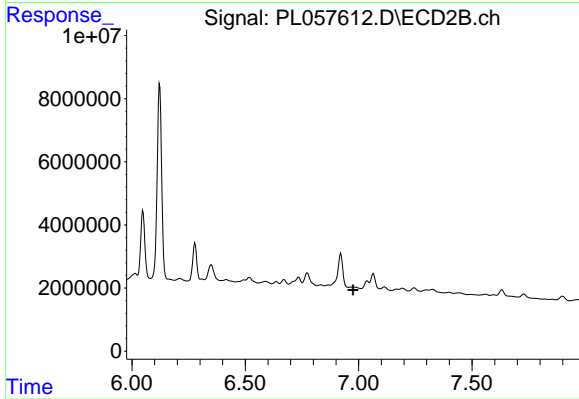
Instrument :
 ECD_L
 ClientSampleId :
 FK-GF-02-054-B



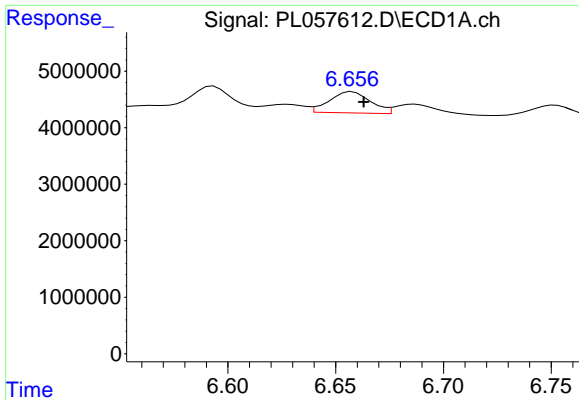
#17 4,4'-DDT
 R.T.: 7.065 min
 Delta R.T.: 0.000 min
 Response: 6243269
 Conc: 2.74 ng/ml



#18 Endrin aldehyde
 R.T.: 6.479 min
 Delta R.T.: 0.029 min
 Response: 6209848
 Conc: 0.67 ng/ml

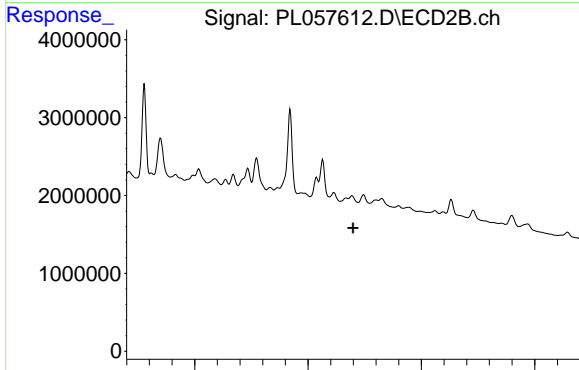


#18 Endrin aldehyde
 R.T.: 0.000 min
 Exp R.T. : 6.976 min
 Response: 0
 Conc: N.D.

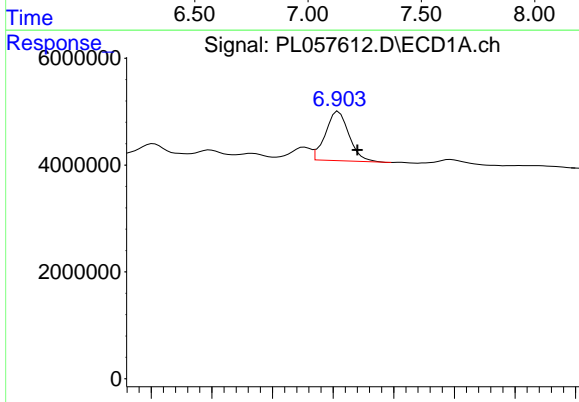


#19 Endosulfan Sulfate
 R.T.: 6.658 min
 Delta R.T.: -0.005 min
 Response: 4982262
 Conc: 0.50 ng/ml

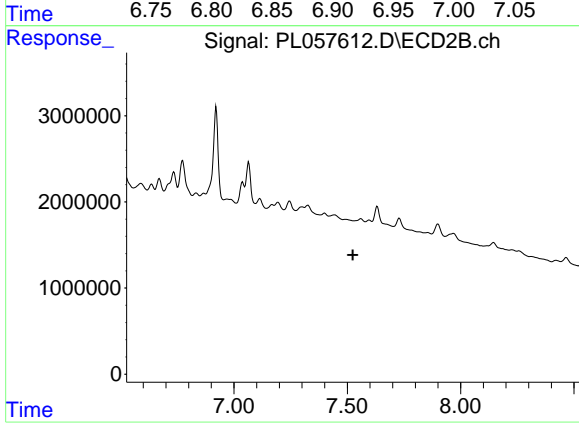
Instrument :
 ECD_L
 ClientSampleId :
 FK-GF-02-054-B



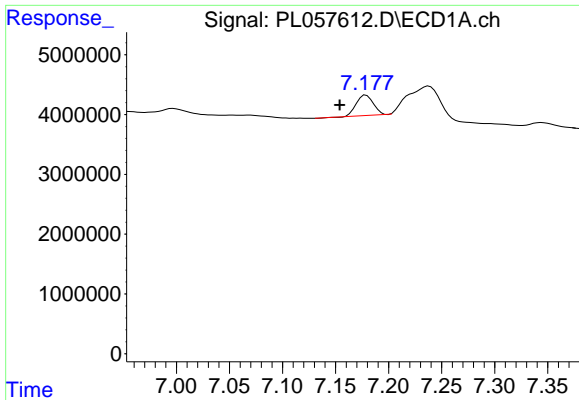
#19 Endosulfan Sulfate
 R.T.: 0.000 min
 Exp R.T. : 7.199 min
 Response: 0
 Conc: N.D.



#20 Methoxychlor
 R.T.: 6.905 min
 Delta R.T.: -0.015 min
 Response: 12496640
 Conc: 2.33 ng/ml

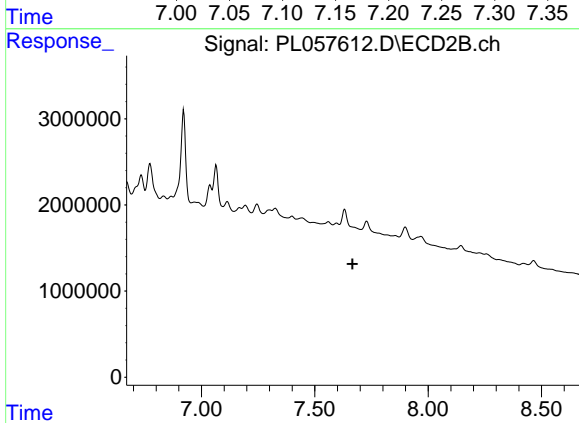


#20 Methoxychlor
 R.T.: 0.000 min
 Exp R.T. : 7.524 min
 Response: 0
 Conc: N.D.

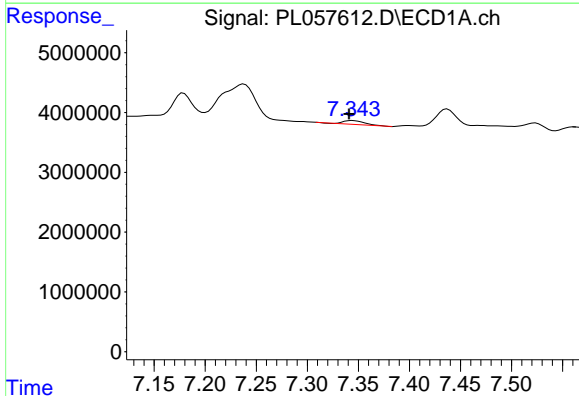


#21 Endrin ketone
 R.T.: 7.179 min
 Delta R.T.: 0.025 min
 Response: 3745647
 Conc: 0.33 ng/ml

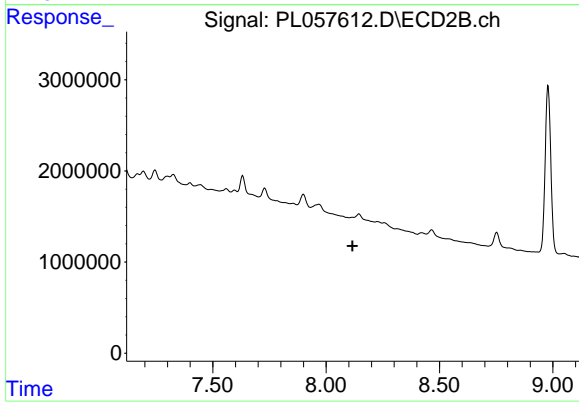
Instrument :
 ECD_L
 ClientSampleId :
 FK-GF-02-054-B



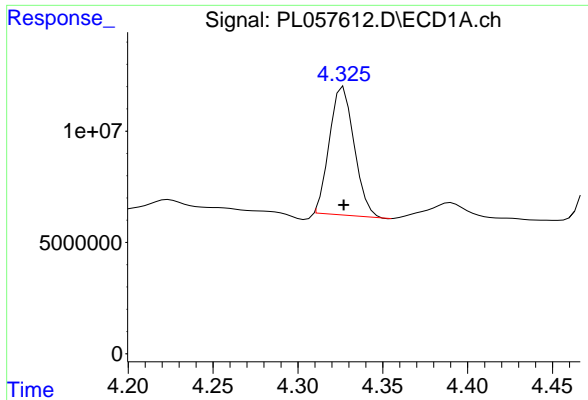
#21 Endrin ketone
 R.T.: 0.000 min
 Exp R.T. : 7.666 min
 Response: 0
 Conc: N.D.



#22 Mirex
 R.T.: 7.344 min
 Delta R.T.: 0.003 min
 Response: 976107
 Conc: 0.12 ng/ml

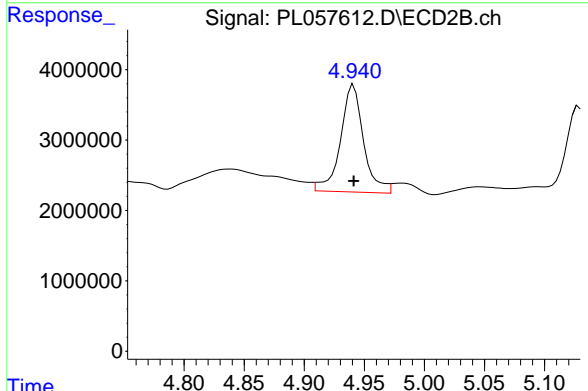


#22 Mirex
 R.T.: 0.000 min
 Exp R.T. : 8.116 min
 Response: 0
 Conc: N.D.

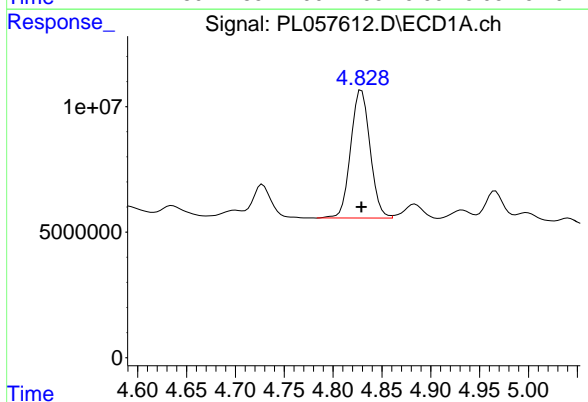


#23 Chlordane-1
 R.T.: 4.327 min
 Delta R.T.: 0.000 min
 Response: 58332315
 Conc: 179.72 ng/ml

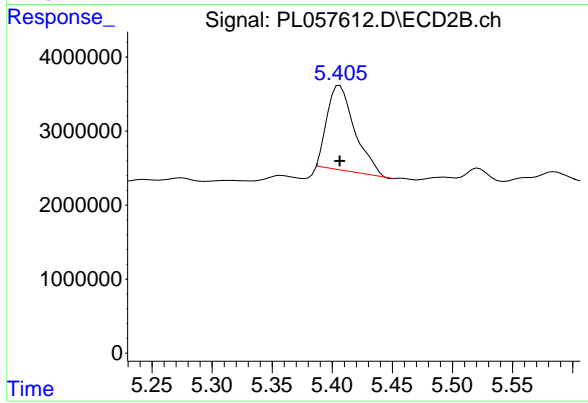
Instrument :
 ECD_L
 ClientSampleId :
 FK-GF-02-054-B



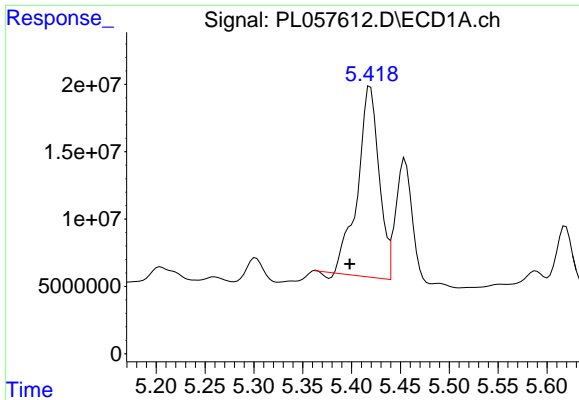
#23 Chlordane-1
 R.T.: 4.941 min
 Delta R.T.: 0.000 min
 Response: 20405537
 Conc: 245.56 ng/ml



#24 Chlordane-2
 R.T.: 4.829 min
 Delta R.T.: 0.000 min
 Response: 70475660
 Conc: 193.95 ng/ml

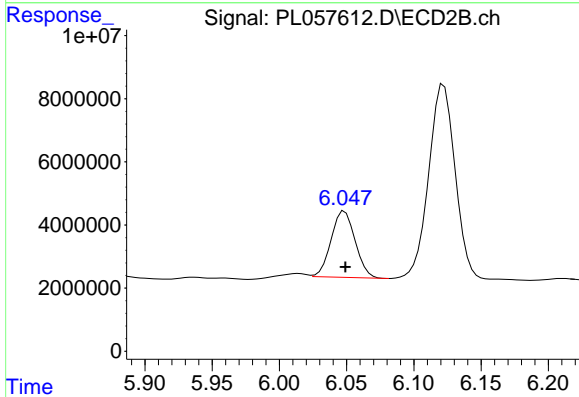


#24 Chlordane-2
 R.T.: 5.406 min
 Delta R.T.: 0.000 min
 Response: 18300502
 Conc: 194.19 ng/ml

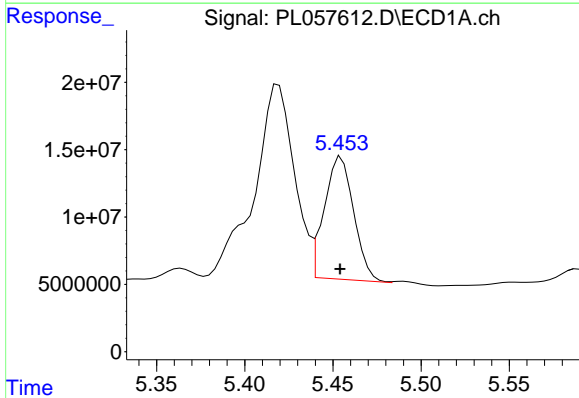


#25 Chlordane-3
 R.T.: 5.419 min
 Delta R.T.: 0.021 min
 Response: 215750454
 Conc: 191.32 ng/ml

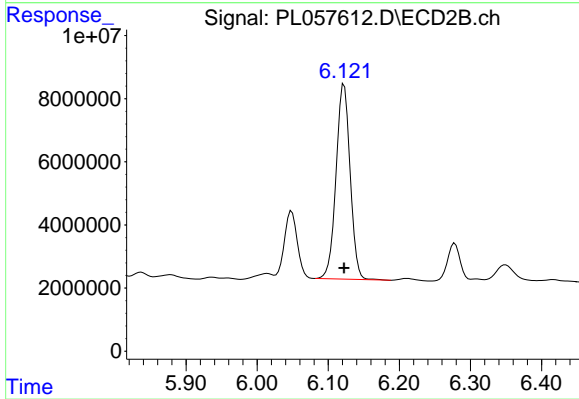
Instrument :
 ECD_L
 ClientSampleId :
 FK-GF-02-054-B



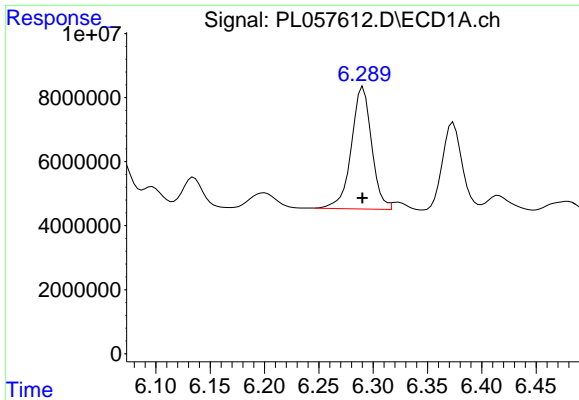
#25 Chlordane-3
 R.T.: 6.048 min
 Delta R.T.: 0.000 min
 Response: 26017411
 Conc: 68.61 ng/ml



#26 Chlordane-4
 R.T.: 5.455 min
 Delta R.T.: 0.000 min
 Response: 105696956
 Conc: 110.25 ng/ml

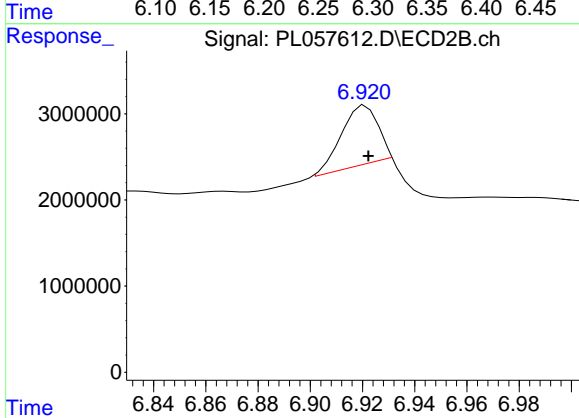


#26 Chlordane-4
 R.T.: 6.122 min
 Delta R.T.: 0.000 min
 Response: 85137070
 Conc: 186.01 ng/ml

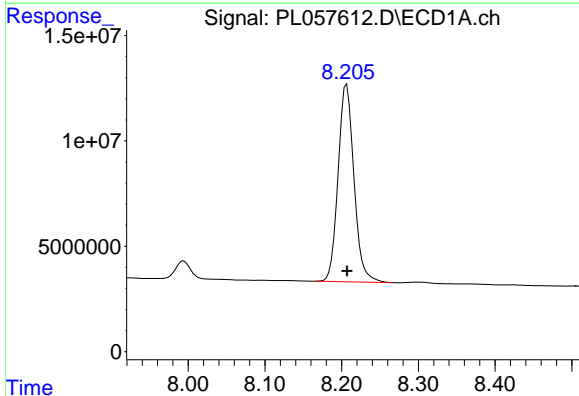


#27 Chlordane-5
 R.T.: 6.291 min
 Delta R.T.: 0.000 min
 Response: 49668997
 Conc: 136.51 ng/ml

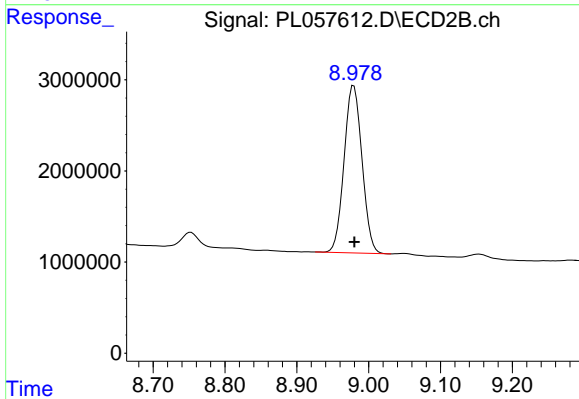
Instrument :
 ECD_L
 ClientSampleId :
 FK-GF-02-054-B



#27 Chlordane-5
 R.T.: 6.921 min
 Delta R.T.: -0.001 min
 Response: 6872921
 Conc: 85.77 ng/ml



#28 Decachlorobiphenyl
 R.T.: 8.207 min
 Delta R.T.: 0.000 min
 Response: 134846067
 Conc: 12.74 ng/ml



#28 Decachlorobiphenyl
 R.T.: 8.979 min
 Delta R.T.: 0.000 min
 Response: 31787739
 Conc: 14.34 ng/ml