

Data Path : Z:\pestpcbsrv\HPCHEM1\ECD_L\Data\PL032624\
 Data File : PL088774.D
 Signal(s) : Signal #1: ECD1A.ch Signal #2: ECD2B.ch
 Acq On : 26 Mar 2024 11:32
 Operator : AR\AJ
 Sample : PEM
 Misc :
 ALS Vial : 3 Sample Multiplier: 1

Instrument :
 ECD_L
ClientSampleId :
 PEM

Manual Integrations
APPROVED
 Reviewed By :Abdul Mirza 03/27/2024
 Supervised By :Ankita Jodhani 03/27/2024

Integration File signal 1: autoint1.e
 Integration File signal 2: autoint2.e
 Quant Time: Mar 26 22:38:07 2024
 Quant Method : Z:\pestpcbsrv\HPCHEM1\ECD_L\methods\PL031324.M
 Quant Title : GC Extractables
 QLast Update : Wed Mar 13 15:45:55 2024
 Response via : Initial Calibration
 Integrator: ChemStation

Volume Inj. : 1 µl
 Signal #1 Phase : ZB-MR2 Signal #2 Phase: ZB-MR1
 Signal #1 Info : 30M x 0.32mm x0.2 Signal #2 Info : 30M x 0.32mm x0.5µm

Compound	RT#1	RT#2	Resp#1	Resp#2	ng/ml	ng/ml

System Monitoring Compounds						
1) SA Tetrachlo...	3.634	2.852	58487702	30464679	22.071	22.859
28) SA Decachlor...	9.295	8.076	48783396	34135969	19.735	25.175m#
Target Compounds						
2) A alpha-BHC	4.098	3.364	40386643	20281508	10.118	10.093m
3) MA gamma-BHC...	4.436	3.702	39444123	19897187	10.171	10.368
6) B beta-BHC	4.634	4.004	20242567	10120627	11.414	11.806
12) B 4,4'-DDE	6.327	5.357	326372	200721	0.109m	0.138 #
14) MA Endrin	6.715	5.769	130.8E6	80436438	47.845	55.803
16) A 4,4'-DDD	6.850	5.918	6161462	3282359	2.419	2.636
17) MA 4,4'-DDT	7.169	6.174	271.4E6	168.4E6	101.803	125.455
18) B Endrin al...	7.066	6.249	3937878	2755599	1.886m	2.630 #
20) A Methoxychlor	7.649	6.757	356.0E6	215.8E6	236.340	269.008
21) B Endrin ke...	7.795	6.985	12439728	6274050	4.208	3.801

(f)=RT Delta > 1/2 Window (#)=Amounts differ by > 25% (m)=manual int.

Data Path : Z:\pestpcbsrv\HPCHEM1\ECD_L\Data\PL032624\
 Data File : PL088774.D
 Signal(s) : Signal #1: ECD1A.ch Signal #2: ECD2B.ch
 Acq On : 26 Mar 2024 11:32
 Operator : AR\AJ
 Sample : PEM
 Misc :
 ALS Vial : 3 Sample Multiplier: 1

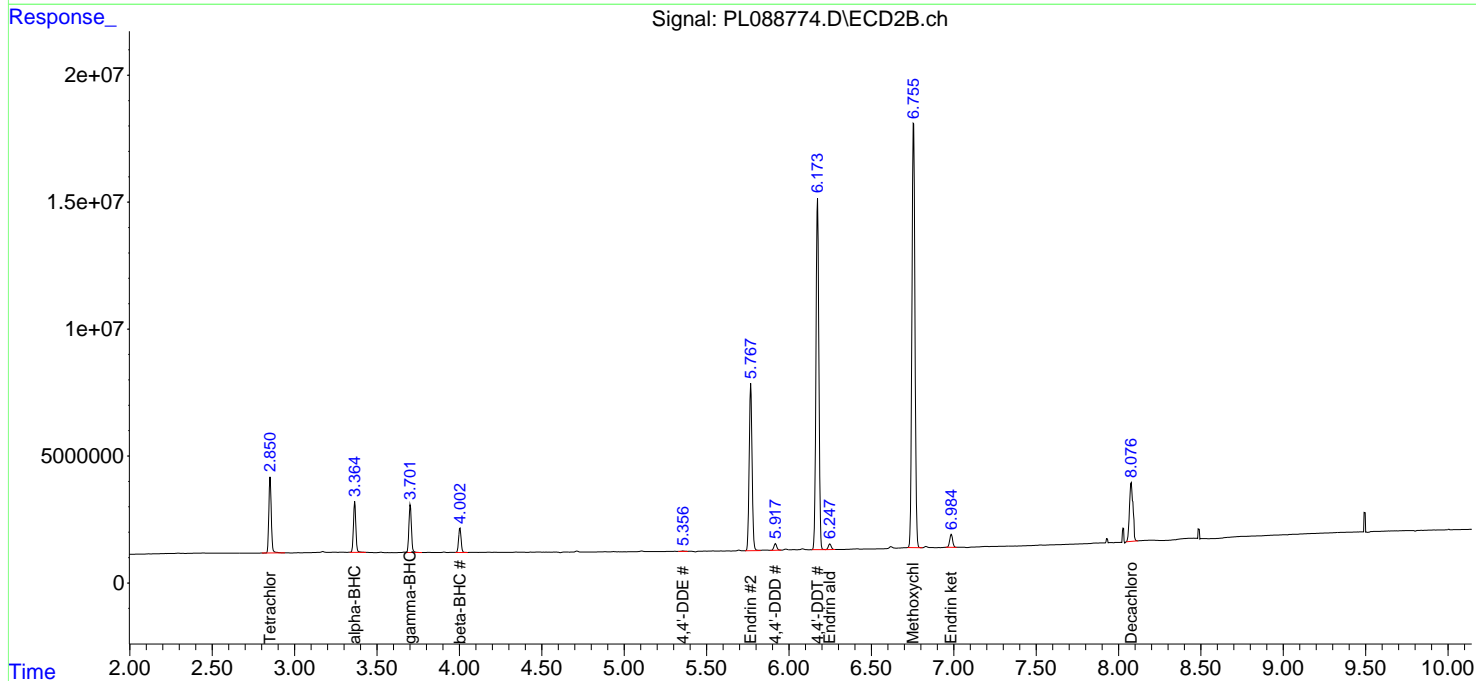
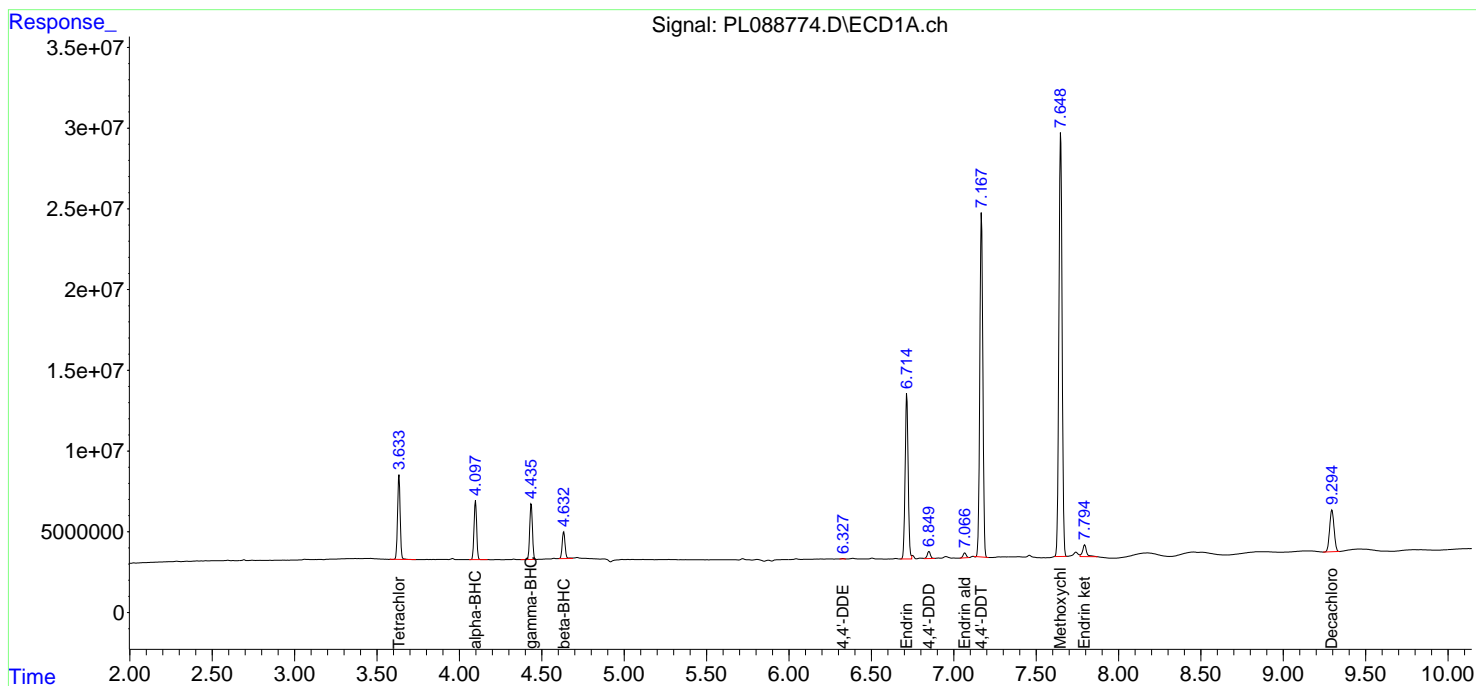
Instrument :
 ECD_L
ClientSampleId :
 PEM

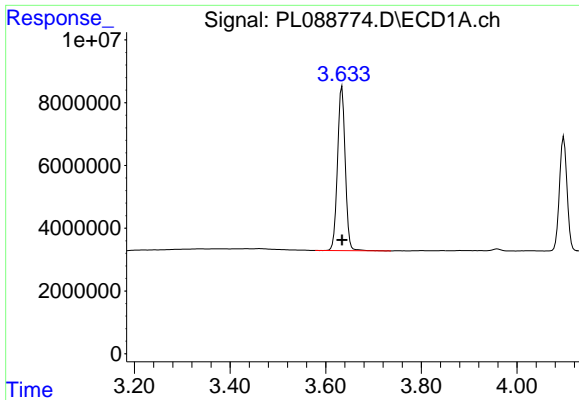
Manual Integrations
APPROVED

Reviewed By :Abdul Mirza 03/27/2024
 Supervised By :Ankita Jodhani 03/27/2024

Integration File signal 1: autoint1.e
 Integration File signal 2: autoint2.e
 Quant Time: Mar 26 22:38:07 2024
 Quant Method : Z:\pestpcbsrv\HPCHEM1\ECD_L\methods\PL031324.M
 Quant Title : GC Extractables
 QLast Update : Wed Mar 13 15:45:55 2024
 Response via : Initial Calibration
 Integrator: ChemStation

Volume Inj. : 1 µl
 Signal #1 Phase : ZB-MR2 Signal #2 Phase: ZB-MR1
 Signal #1 Info : 30M x 0.32mm x0.2 Signal #2 Info : 30M x 0.32mm x0.5µm

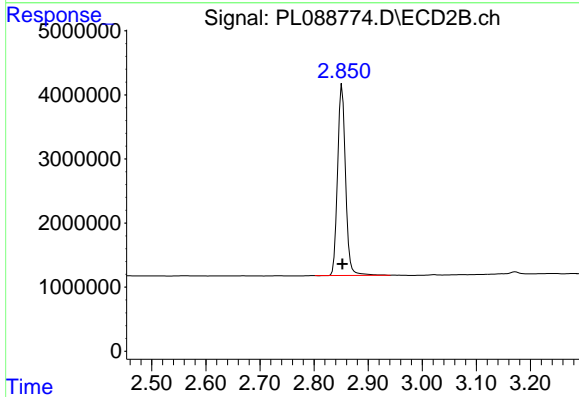




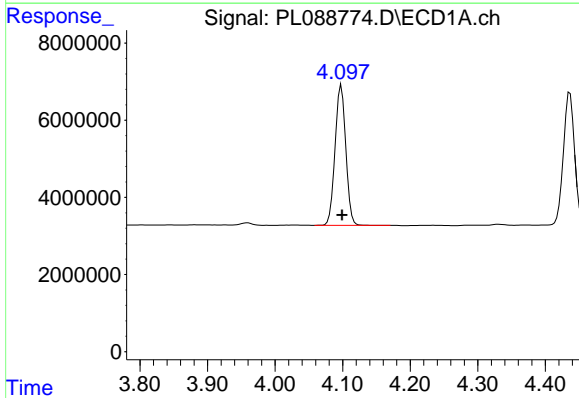
#1 Tetrachloro-m-xylene
 R.T.: 3.634 min
 Delta R.T.: 0.000 min
 Response: 58487702
 Conc: 22.07 ng/ml

Instrument :
 ECD_L
 ClientSampleId :
 PEM

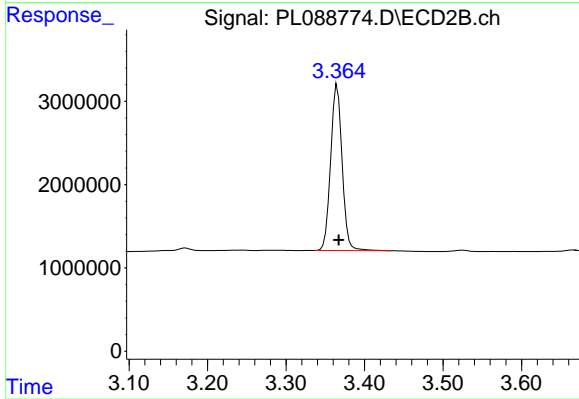
Manual Integrations
APPROVED
 Reviewed By :Abdul Mirza 03/27/2024
 Supervised By :Ankita Jodhani 03/27/2024



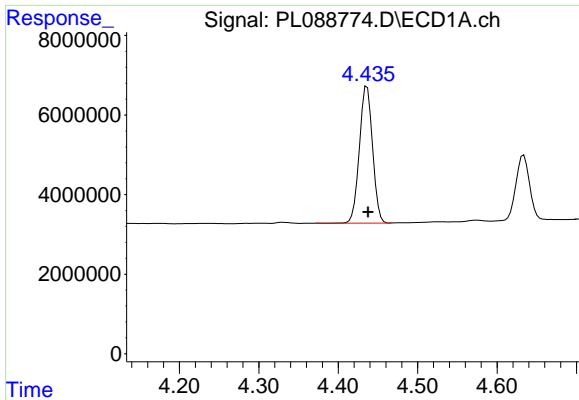
#1 Tetrachloro-m-xylene
 R.T.: 2.852 min
 Delta R.T.: 0.000 min
 Response: 30464679
 Conc: 22.86 ng/ml



#2 alpha-BHC
 R.T.: 4.098 min
 Delta R.T.: -0.001 min
 Response: 40386643
 Conc: 10.12 ng/ml



#2 alpha-BHC
 R.T.: 3.364 min
 Delta R.T.: -0.003 min
 Response: 20281508
 Conc: 10.09 ng/ml m

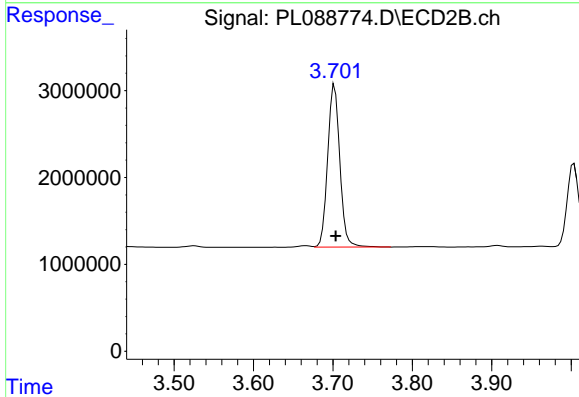


#3 gamma-BHC (Lindane)
 R.T.: 4.436 min
 Delta R.T.: -0.001 min
 Response: 39444123
 Conc: 10.17 ng/ml

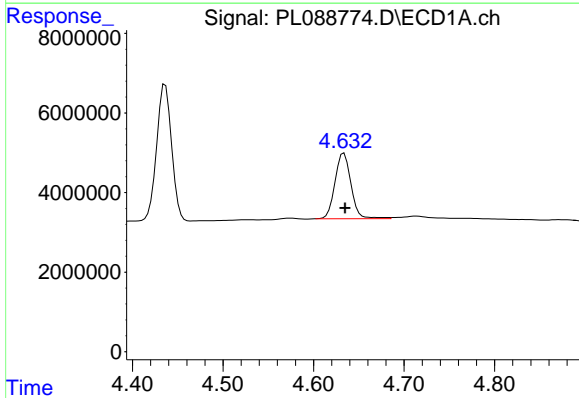
Instrument :
 ECD_L
 ClientSampleId :
 PEM

Manual Integrations
 APPROVED

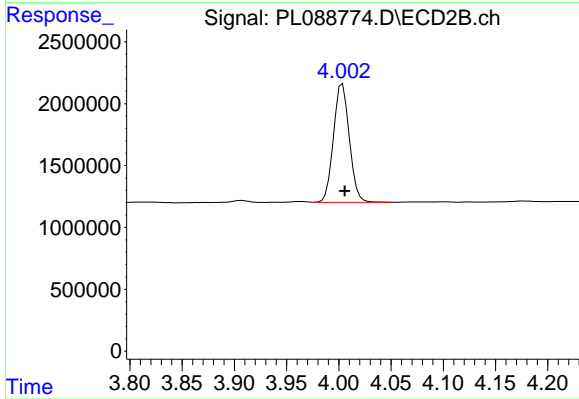
Reviewed By :Abdul Mirza 03/27/2024
 Supervised By :Ankita Jodhani 03/27/2024



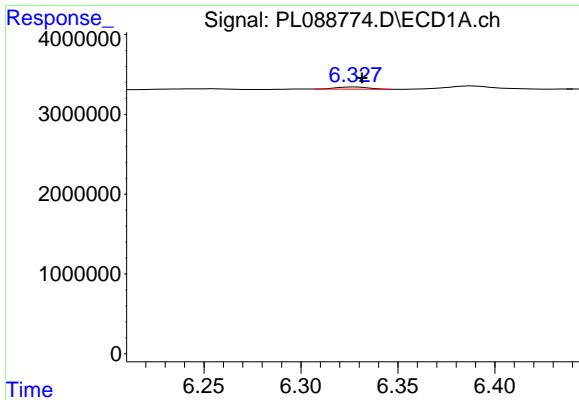
#3 gamma-BHC (Lindane)
 R.T.: 3.702 min
 Delta R.T.: -0.002 min
 Response: 19897187
 Conc: 10.37 ng/ml



#6 beta-BHC
 R.T.: 4.634 min
 Delta R.T.: -0.001 min
 Response: 20242567
 Conc: 11.41 ng/ml



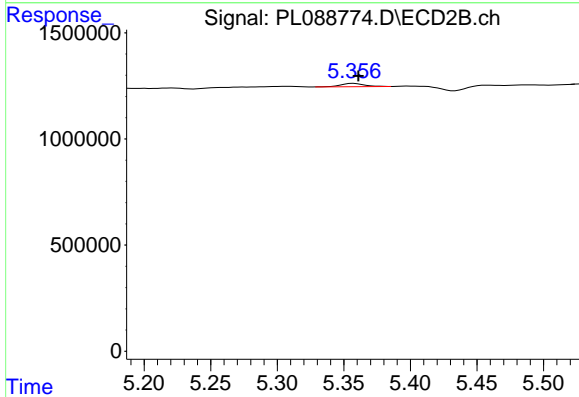
#6 beta-BHC
 R.T.: 4.004 min
 Delta R.T.: -0.002 min
 Response: 10120627
 Conc: 11.81 ng/ml



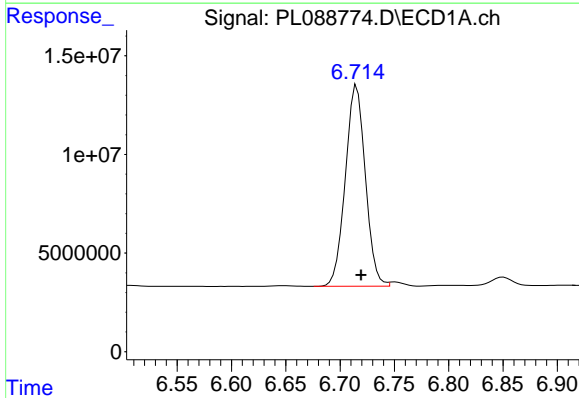
#12 4,4'-DDE
 R.T.: 6.327 min
 Delta R.T.: -0.005 min
 Response: 326372
 Conc: 0.11 ng/ml

Instrument : ECD_L
 ClientSampleId : PEM

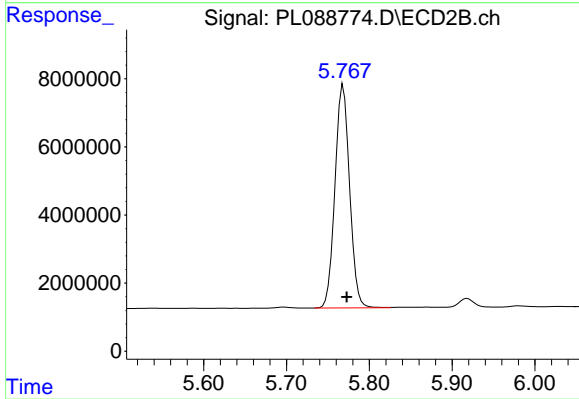
Manual Integrations
APPROVED
 Reviewed By :Abdul Mirza 03/27/2024
 Supervised By :Ankita Jodhani 03/27/2024



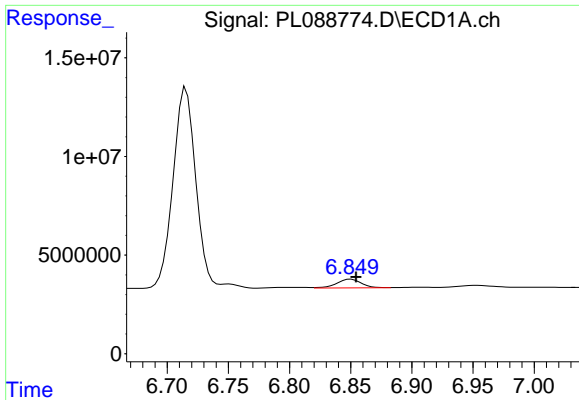
#12 4,4'-DDE
 R.T.: 5.357 min
 Delta R.T.: -0.004 min
 Response: 200721
 Conc: 0.14 ng/ml



#14 Endrin
 R.T.: 6.715 min
 Delta R.T.: -0.004 min
 Response: 130794110
 Conc: 47.84 ng/ml



#14 Endrin
 R.T.: 5.769 min
 Delta R.T.: -0.004 min
 Response: 80436438
 Conc: 55.80 ng/ml

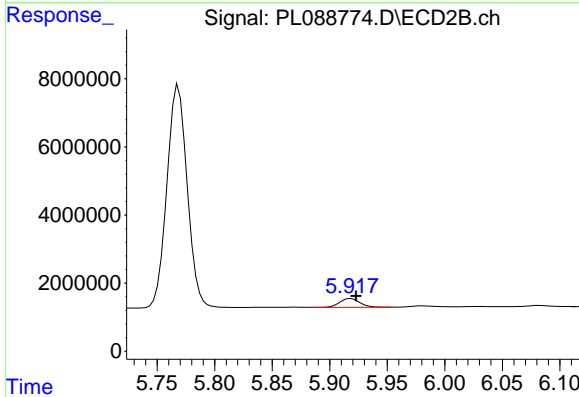


#16 4,4'-DDD
 R.T.: 6.850 min
 Delta R.T.: -0.004 min
 Response: 6161462
 Conc: 2.42 ng/ml

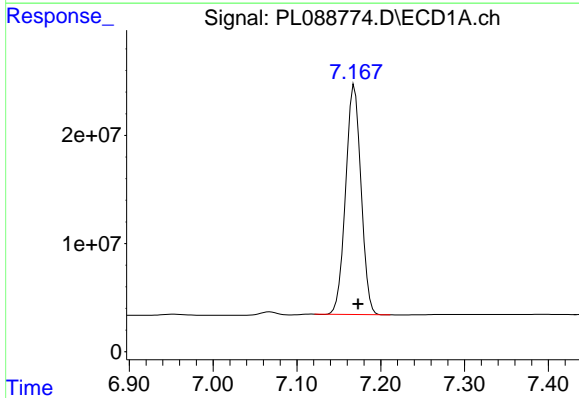
Instrument :
 ECD_L
 ClientSampleId :
 PEM

Manual Integrations
 APPROVED

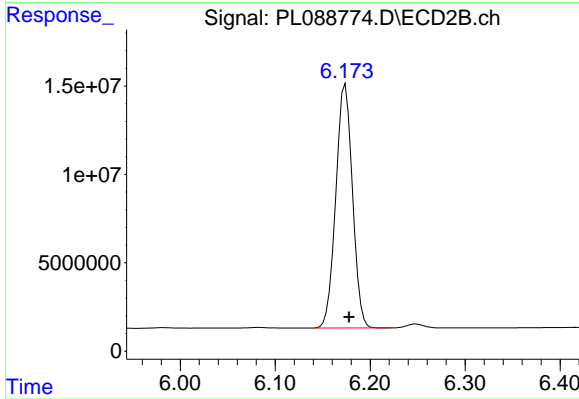
Reviewed By :Abdul Mirza 03/27/2024
 Supervised By :Ankita Jodhani 03/27/2024



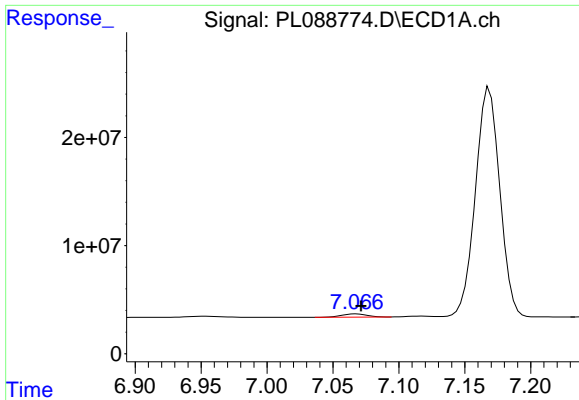
#16 4,4'-DDD
 R.T.: 5.918 min
 Delta R.T.: -0.004 min
 Response: 3282359
 Conc: 2.64 ng/ml



#17 4,4'-DDT
 R.T.: 7.169 min
 Delta R.T.: -0.004 min
 Response: 271353909
 Conc: 101.80 ng/ml



#17 4,4'-DDT
 R.T.: 6.174 min
 Delta R.T.: -0.004 min
 Response: 168384480
 Conc: 125.45 ng/ml

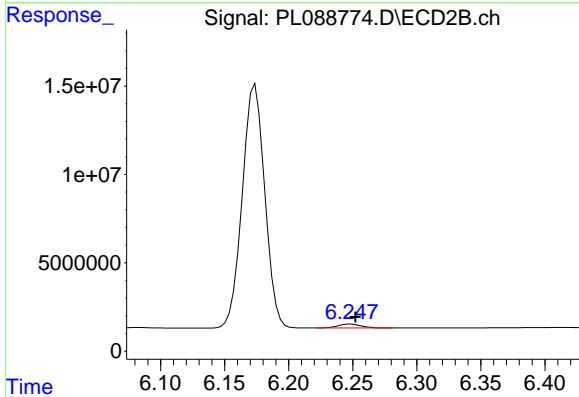


#18 Endrin aldehyde
 R.T.: 7.066 min
 Delta R.T.: -0.005 min
 Response: 3937878
 Conc: 1.89 ng/ml

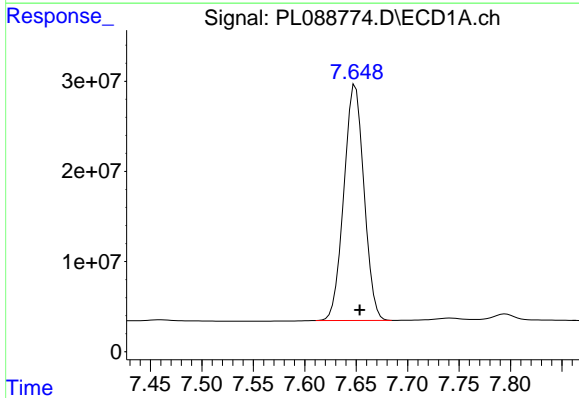
Instrument :
 ECD_L
 ClientSampleId :
 PEM

Manual Integrations
 APPROVED

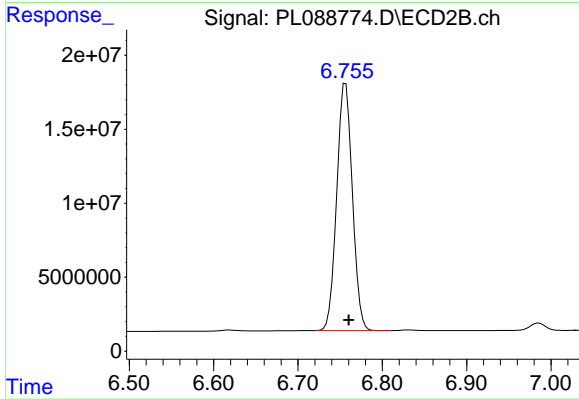
Reviewed By :Abdul Mirza 03/27/2024
 Supervised By :Ankita Jodhani 03/27/2024



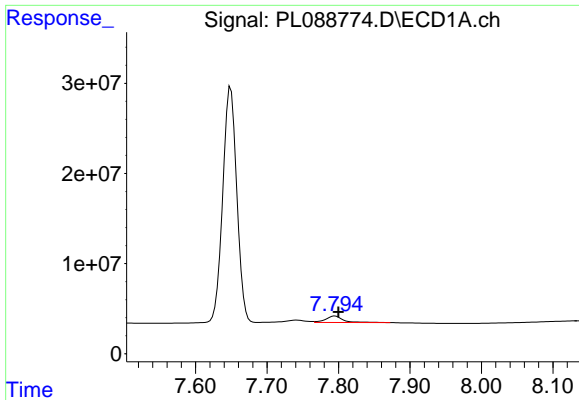
#18 Endrin aldehyde
 R.T.: 6.249 min
 Delta R.T.: -0.004 min
 Response: 2755599
 Conc: 2.63 ng/ml



#20 Methoxychlor
 R.T.: 7.649 min
 Delta R.T.: -0.004 min
 Response: 356048757
 Conc: 236.34 ng/ml



#20 Methoxychlor
 R.T.: 6.757 min
 Delta R.T.: -0.004 min
 Response: 215763386
 Conc: 269.01 ng/ml



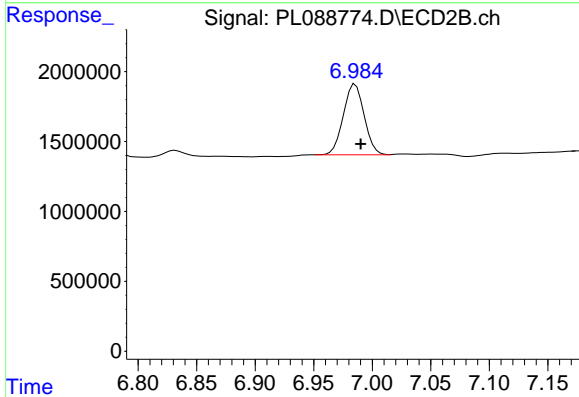
#21 Endrin ketone

R.T.: 7.795 min
 Delta R.T.: -0.005 min
 Response: 12439728
 Conc: 4.21 ng/ml

Instrument :
 ECD_L
 ClientSampleId :
 PEM

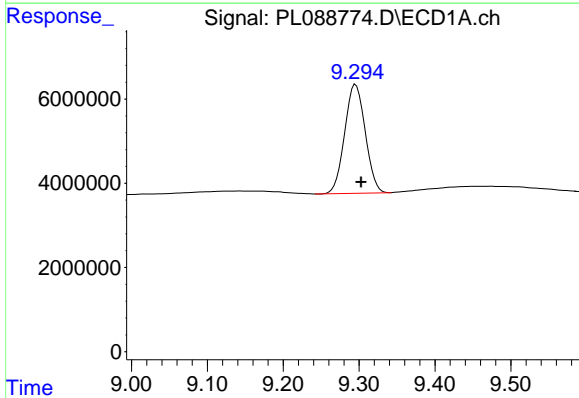
Manual Integrations
 APPROVED

Reviewed By :Abdul Mirza 03/27/2024
 Supervised By :Ankita Jodhani 03/27/2024



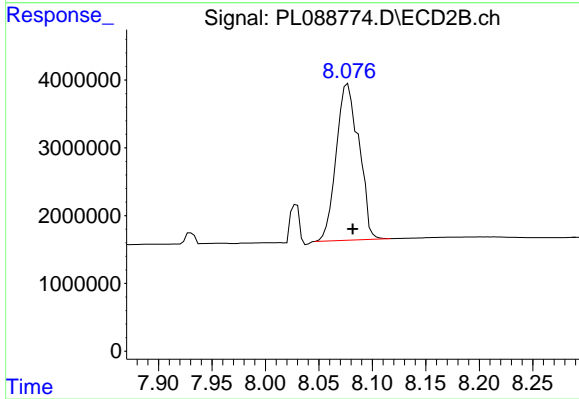
#21 Endrin ketone

R.T.: 6.985 min
 Delta R.T.: -0.005 min
 Response: 6274050
 Conc: 3.80 ng/ml



#28 Decachlorobiphenyl

R.T.: 9.295 min
 Delta R.T.: -0.007 min
 Response: 48783396
 Conc: 19.74 ng/ml



#28 Decachlorobiphenyl

R.T.: 8.076 min
 Delta R.T.: -0.006 min
 Response: 34135969
 Conc: 25.18 ng/ml m