

Data Path : Z:\pestpcbsrv\HPCHEM1\ECD\_L\Data\PL032819\  
 Data File : PL046623.D  
 Signal(s) : Signal #1: ECD1A.ch Signal #2: ECD2B.ch  
 Acq On : 28 Mar 2019 11:48  
 Operator : AJ\SJ  
 Sample : MDL-BL-TOX-S-07  
 Misc :  
 ALS Vial : 18 Sample Multiplier: 1

**Instrument :**  
 ECD\_L  
**ClientSampleId :**  
 MDL-BL-TOX-S-07

**Manual Integrations**  
**APPROVED**  
 mohammad  
 3/29/2019 10:15:24 AM

Integration File signal 1: autoint1.e  
 Integration File signal 2: autoint2.e  
 Quant Time: Mar 28 12:23:11 2019  
 Quant Method : Z:\pestpcbsrv\HPCHEM1\ECD\_L\methods\LTX032219.M  
 Quant Title : GC Extractables  
 QLast Update : Fri Mar 22 15:08:02 2019  
 Response via : Initial Calibration  
 Integrator: ChemStation

Volume Inj. : 2 µl  
 Signal #1 Phase : Rtx-CLPesticide 1 Signal #2 Phase: Rtx-CLPesticide 1  
 Signal #1 Info : 30M x 0.32mm x0.3 Signal #2 Info : 30M x 0.32mm x 0.25µm

Compound	RT#1	RT#2	Resp#1	Resp#2	ng/ml	ng/ml
-----						
System Monitoring Compounds						
1) SA Tetrachlo...	3.358	3.976	123.8E6	40242587	17.491	18.390
7) SA Decachlor...	8.032	9.027f	161.4E6	46198278	19.382m	19.940

Target Compounds

(f)=RT Delta > 1/2 Window (#)=Amounts differ by > 25% (m)=manual int.

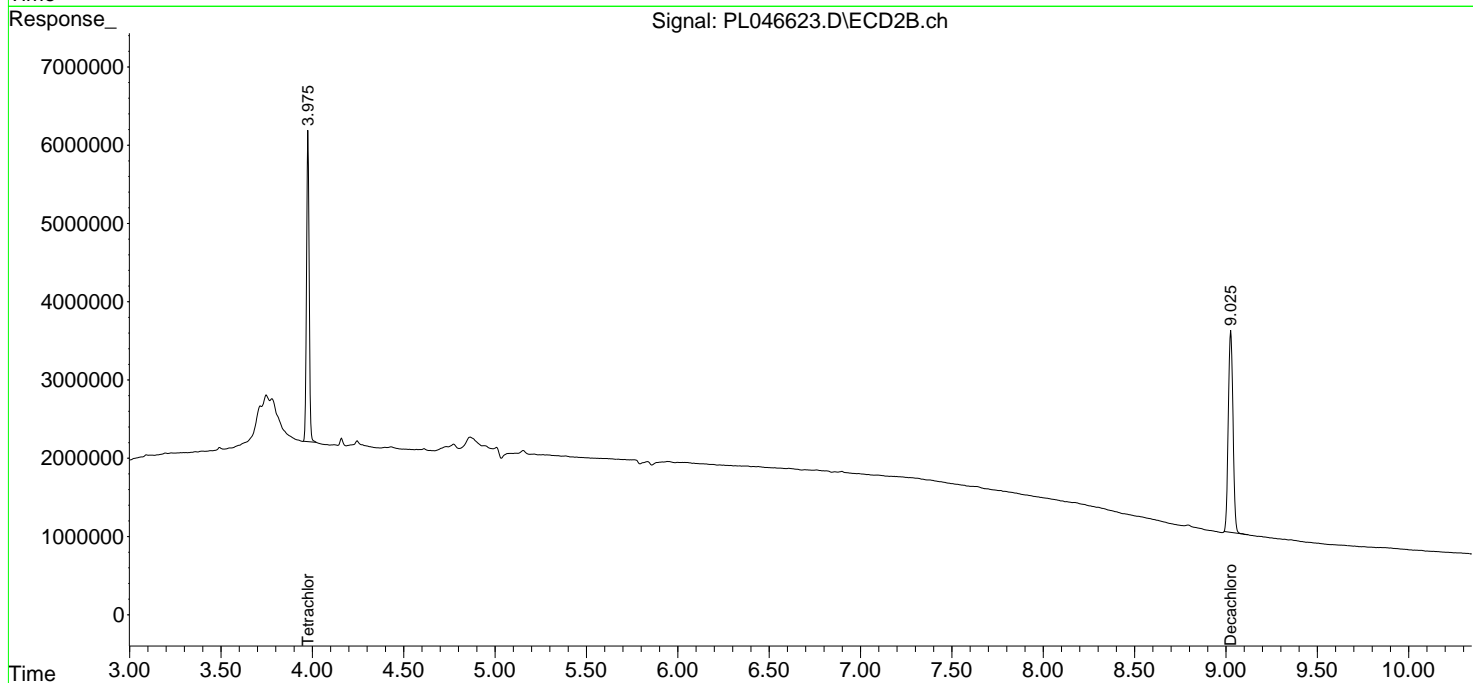
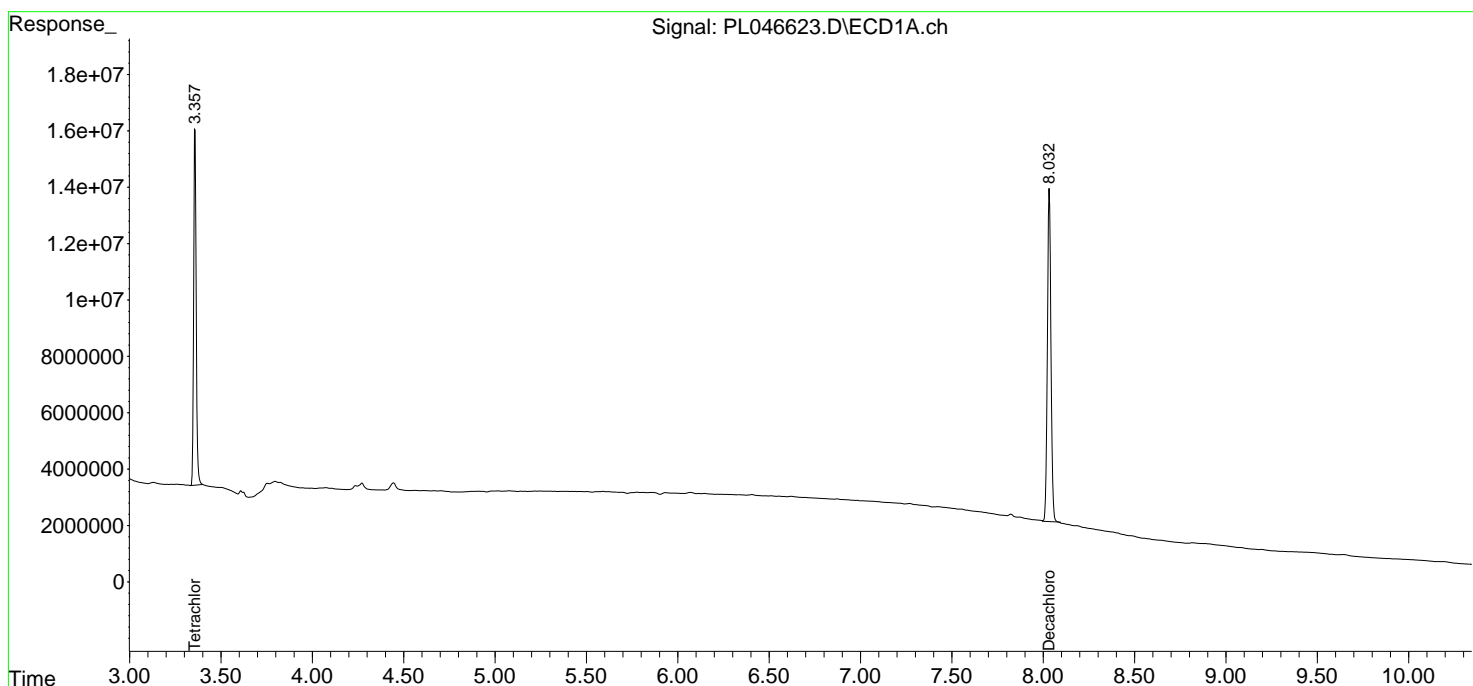
Data Path : Z:\pestpcbsrv\HPCHEM1\ECD\_L\Data\PL032819\  
 Data File : PL046623.D  
 Signal(s) : Signal #1: ECD1A.ch Signal #2: ECD2B.ch  
 Acq On : 28 Mar 2019 11:48  
 Operator : AJ\SJ  
 Sample : MDL-BL-TOX-S-07  
 Misc :  
 ALS Vial : 18 Sample Multiplier: 1

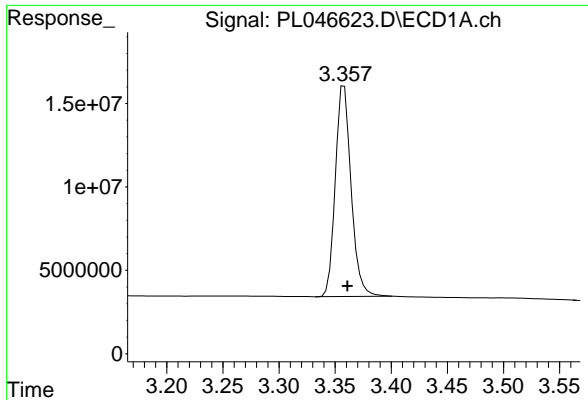
**Instrument :**  
 ECD\_L  
**Client Sampled :**  
 MDL-BL-TOX-S-07

**Manual Integrations**  
**APPROVED**  
 mohammad  
 3/29/2019 10:15:24 AM

Integration File signal 1: autoint1.e  
 Integration File signal 2: autoint2.e  
 Quant Time: Mar 28 12:23:11 2019  
 Quant Method : Z:\pestpcbsrv\HPCHEM1\ECD\_L\methods\LTX032219.M  
 Quant Title : GC Extractables  
 QLast Update : Fri Mar 22 15:08:02 2019  
 Response via : Initial Calibration  
 Integrator: ChemStation

Volume Inj. : 2 µl  
 Signal #1 Phase : Rtx-CLPesticide 1 Signal #2 Phase: Rtx-CLPesticide 1  
 Signal #1 Info : 30M x 0.32mm x0.3 Signal #2 Info : 30M x 0.32mm x 0.25µm

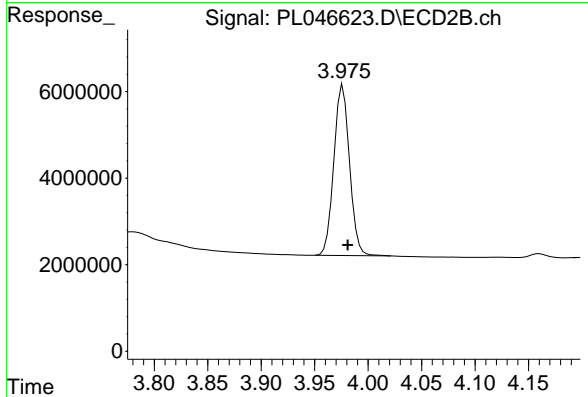




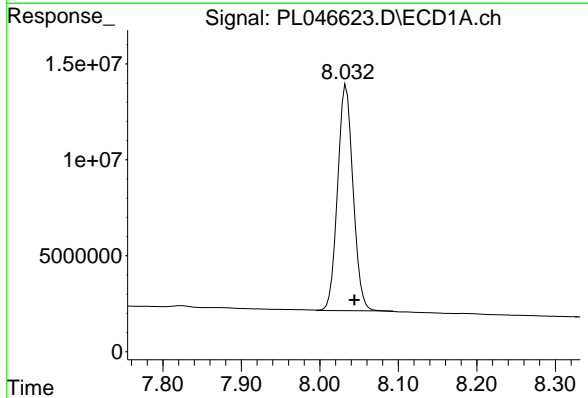
#1 Tetrachloro-m-xylene  
 R.T.: 3.358 min  
 Delta R.T.: -0.003 min  
 Response: 123840207  
 Conc: 17.49 ng/ml

**Instrument :**  
 ECD\_L  
**ClientSampleId :**  
 MDL-BL-TOX-S-07

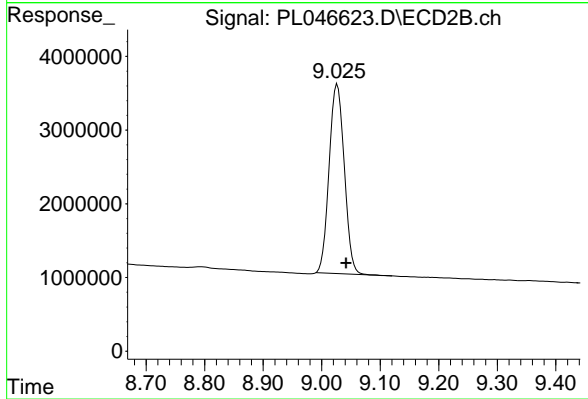
**Manual Integrations**  
**APPROVED**  
 mohammad  
 3/29/2019 10:15:24 AM



#1 Tetrachloro-m-xylene  
 R.T.: 3.976 min  
 Delta R.T.: -0.005 min  
 Response: 40242587  
 Conc: 18.39 ng/ml



#7 Decachlorobiphenyl  
 R.T.: 8.032 min  
 Delta R.T.: -0.012 min  
 Response: 161386852  
 Conc: 19.38 ng/ml m



#7 Decachlorobiphenyl  
 R.T.: 9.027 min  
 Delta R.T.: -0.015 min  
 Response: 46198278  
 Conc: 19.94 ng/ml