

Data Path : Z:\pestpcbsrv\HPCHEM1\ECD_L\Data\PL032819\
 Data File : PL046639.D
 Signal(s) : Signal #1: ECD1A.ch Signal #2: ECD2B.ch
 Acq On : 28 Mar 2019 16:33
 Operator : AJ\SJ
 Sample : PSTDCCC050
 Misc :
 ALS Vial : 4 Sample Multiplier: 1

Instrument :
 ECD_L
 ClientSampleId :
 PSTDCCC050

Manual Integrations
 APPROVED

mohammad
 3/29/2019 10:15:58 AM

Integration File signal 1: autoint1.e
 Integration File signal 2: autoint2.e
 Quant Time: Mar 29 01:13:06 2019
 Quant Method : Z:\pestpcbsrv\HPCHEM1\ECD_L\methods\PL032219.M
 Quant Title : GC Extractables
 QLast Update : Fri Mar 22 13:40:08 2019
 Response via : Initial Calibration
 Integrator: ChemStation

Volume Inj. : 1 µl
 Signal #1 Phase : ZB-MR2 Signal #2 Phase: ZB-MR1
 Signal #1 Info : 30M x 0.32mm x0.2 Signal #2 Info : 30M x 0.32mm x0.5µm

	Compound	RT#1	RT#2	Resp#1	Resp#2	ng/ml	ng/ml

System Monitoring Compounds							
1)	SA Tetrachlo...	3.358	3.978	352.8E6	115.2E6	48.492	50.299
2)	SA Decachlor...	8.035	9.030	408.5E6	115.1E6	48.569	49.652
Target Compounds							
2)	A alpha-BHC	3.788	4.367	580.9E6	165.1E6	49.815	51.386
3)	MA gamma-BHC...	4.065	4.652	530.5E6	153.7E6	49.374	51.345
4)	MA Heptachlor	4.352	5.157	538.1E6	157.0E6	48.803	51.027m
5)	MB Aldrin	4.592	5.462	514.9E6	147.4E6	49.916	51.448
6)	B beta-BHC	4.318	4.824	217.3E6	68544921	48.257	51.705
7)	B delta-BHC	4.513	5.039	511.2E6	136.5E6	50.498	58.841m
8)	B Heptachlo...	5.030	5.847	488.0E6	141.9E6	50.031	53.825m
9)	A Endosulfan I	5.361	6.204	464.7E6	132.8E6	49.426	50.899
10)	B gamma-Chl...	5.252	6.082	506.1E6	145.4E6	49.269	51.220
11)	B alpha-Chl...	5.309	6.155	496.8E6	144.4E6	49.003	50.922
12)	B 4,4'-DDE	5.476	6.312	468.9E6	127.2E6	50.928	51.231
13)	MA Dieldrin	5.601	6.461	499.0E6	137.6E6	49.719	50.763
14)	MA Endrin	5.854	6.679	435.5E6	113.1E6	46.231	47.311
15)	B Endosulfa...	6.128	6.888	442.8E6	124.0E6	49.419	51.392
16)	A 4,4'-DDD	5.987	6.803	389.9E6	107.3E6	51.578	53.332
17)	MA 4,4'-DDT	6.222	7.101	366.0E6	101.8E6	48.318	48.568
18)	B Endrin al...	6.295	7.012	368.3E6	107.6E6	49.133	50.647
19)	B Endosulfa...	6.506	7.235	408.9E6	118.1E6	49.803	50.046
20)	A Methoxychlor	6.766	7.559	195.7E6	61189659	46.044	48.000
21)	B Endrin ke...	6.990	7.704	479.0E6	131.5E6	51.804	52.914
22)	Mirex	7.166	8.156	350.4E6	101.4E6	48.096	50.700

(f)=RT Delta > 1/2 Window (#)=Amounts differ by > 25% (m)=manual int.

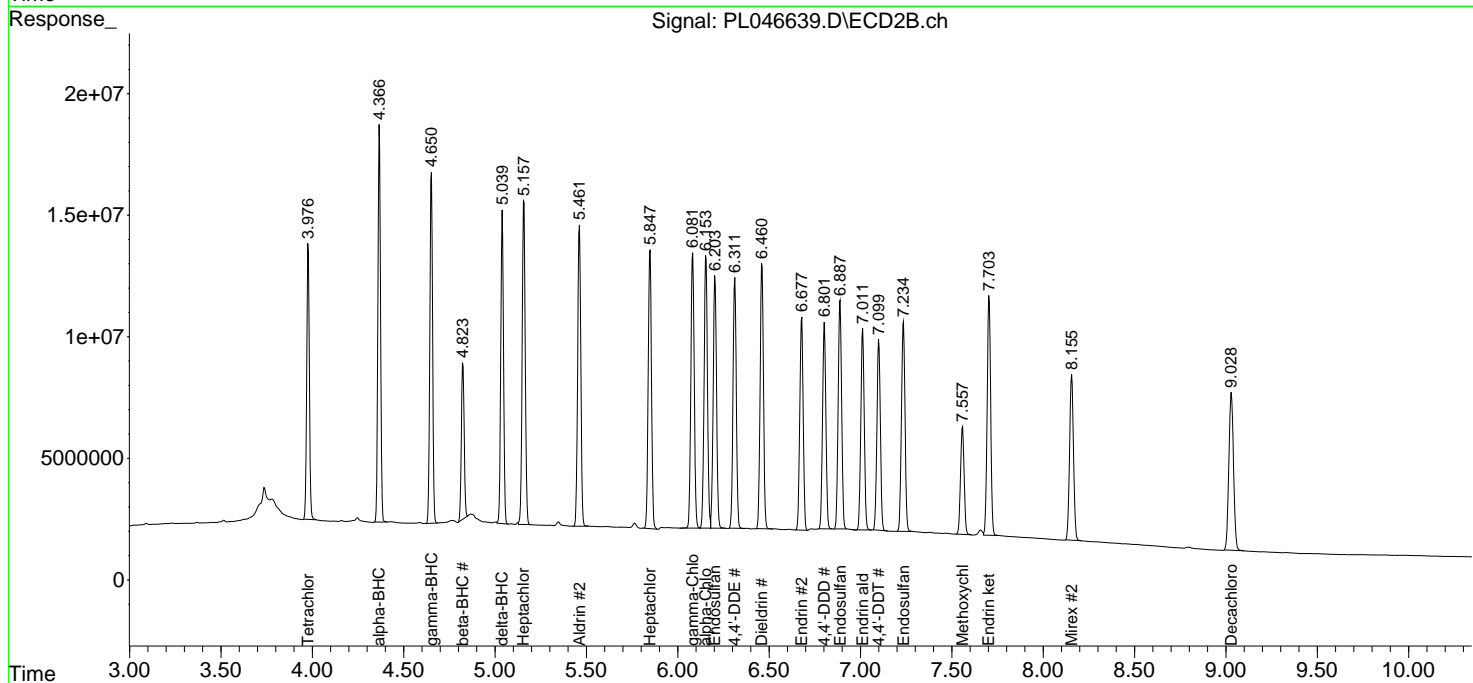
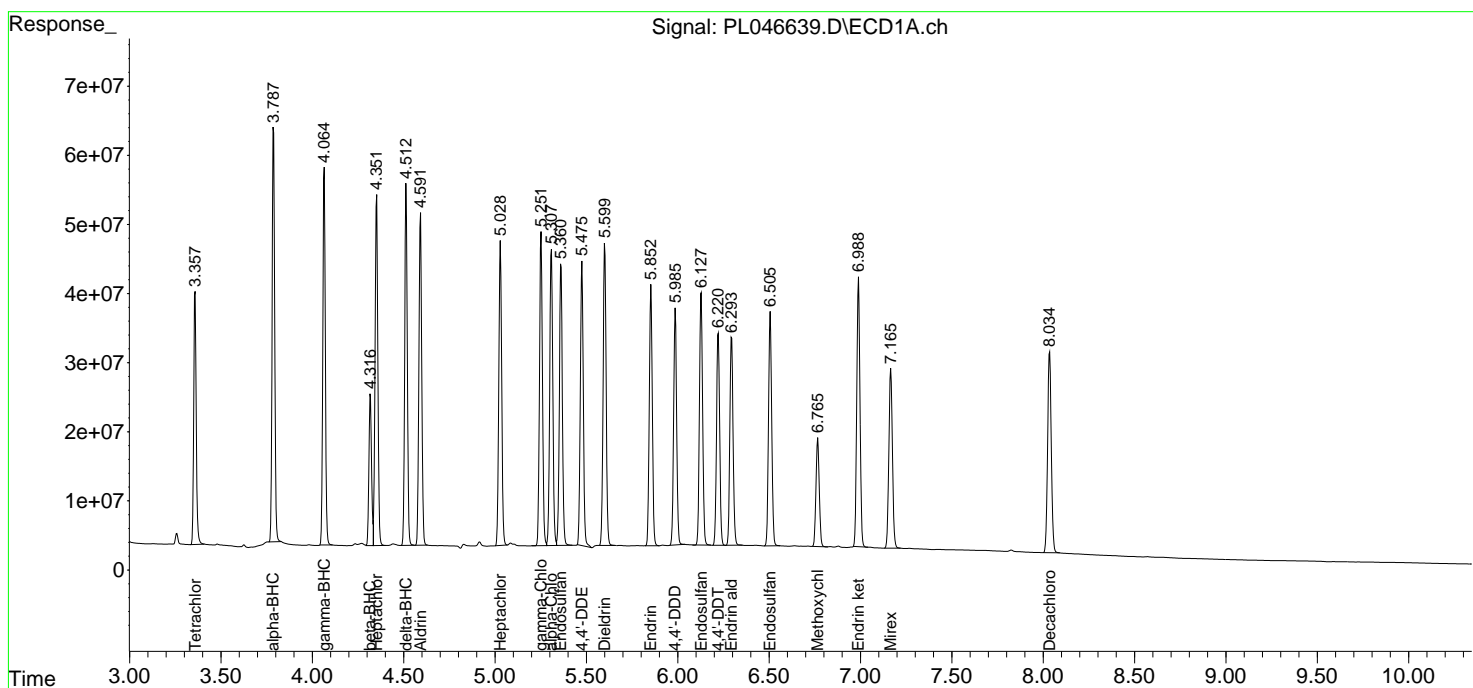
Data Path : Z:\pestpcbsrv\HPCHEM1\ECD_L\Data\PL032819\
 Data File : PL046639.D
 Signal(s) : Signal #1: ECD1A.ch Signal #2: ECD2B.ch
 Acq On : 28 Mar 2019 16:33
 Operator : AJ\SJ
 Sample : PSTDCCC050
 Misc :
 ALS Vial : 4 Sample Multiplier: 1

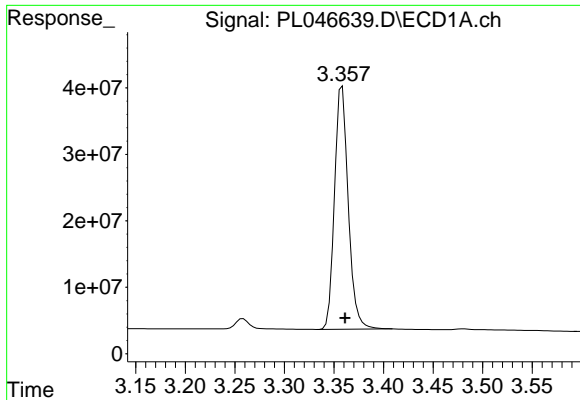
Instrument :
 ECD_L
 ClientSampled :
 PSTDCCC050

Manual Integrations
APPROVED
 mohammad
 3/29/2019 10:15:58 AM

Integration File signal 1: autoint1.e
 Integration File signal 2: autoint2.e
 Quant Time: Mar 29 01:13:06 2019
 Quant Method : Z:\pestpcbsrv\HPCHEM1\ECD_L\methods\PL032219.M
 Quant Title : GC Extractables
 QLast Update : Fri Mar 22 13:40:08 2019
 Response via : Initial Calibration
 Integrator: ChemStation

Volume Inj. : 1 µl
 Signal #1 Phase : ZB-MR2 Signal #2 Phase: ZB-MR1
 Signal #1 Info : 30M x 0.32mm x0.2 Signal #2 Info : 30M x 0.32mm x0.5µm

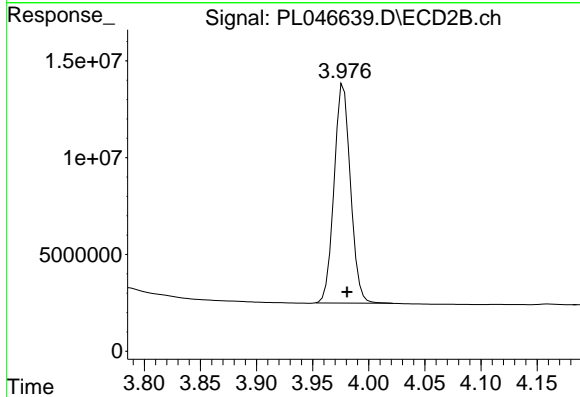




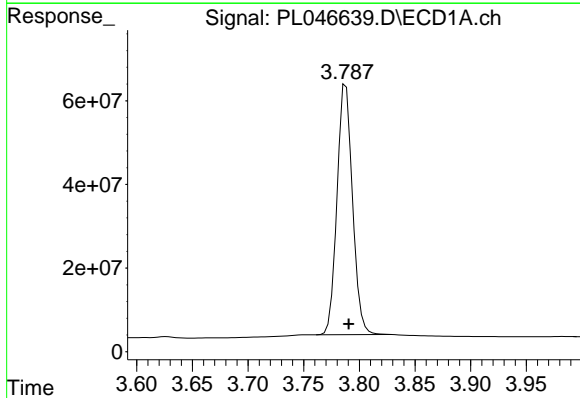
#1 Tetrachloro-m-xylene
 R.T.: 3.358 min
 Delta R.T.: -0.003 min
 Response: 352762144
 Conc: 48.49 ng/ml

Instrument :
 ECD_L
 ClientSampleId :
 PSTDCCC050

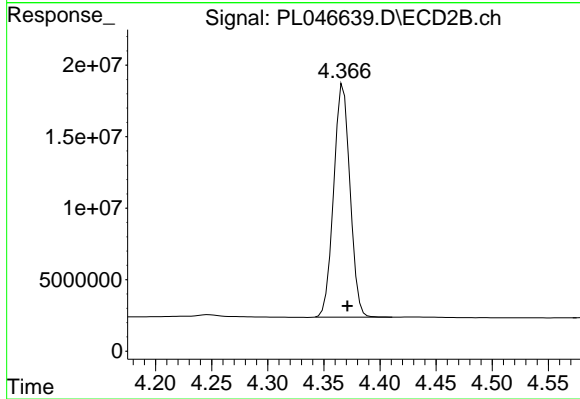
Manual Integrations
 APPROVED
 mohammad
 3/29/2019 10:15:58 AM



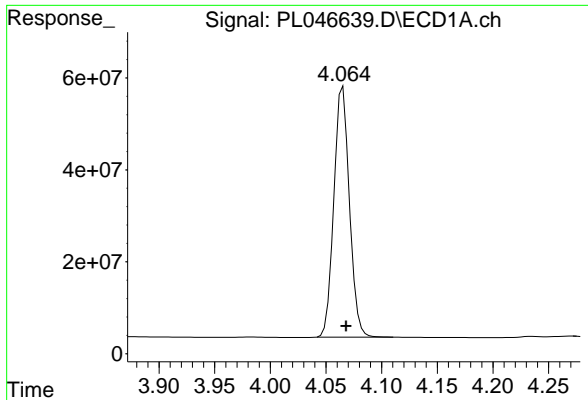
#1 Tetrachloro-m-xylene
 R.T.: 3.978 min
 Delta R.T.: -0.003 min
 Response: 115164335
 Conc: 50.30 ng/ml



#2 alpha-BHC
 R.T.: 3.788 min
 Delta R.T.: -0.003 min
 Response: 580946301
 Conc: 49.82 ng/ml



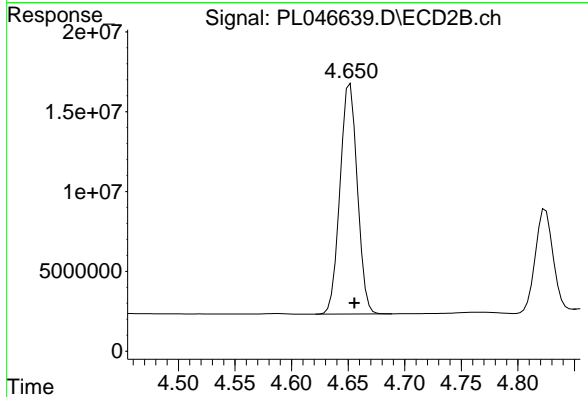
#2 alpha-BHC
 R.T.: 4.367 min
 Delta R.T.: -0.003 min
 Response: 165119593
 Conc: 51.39 ng/ml



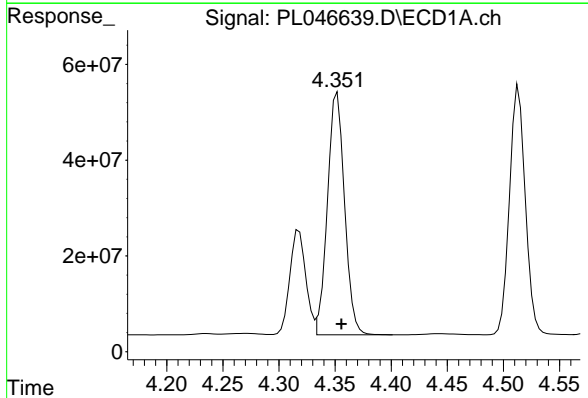
#3 gamma-BHC (Lindane)
 R.T.: 4.065 min
 Delta R.T.: -0.003 min
 Response: 530499091
 Conc: 49.37 ng/ml

Instrument :
 ECD_L
ClientSampled :
 PSTDCCC050

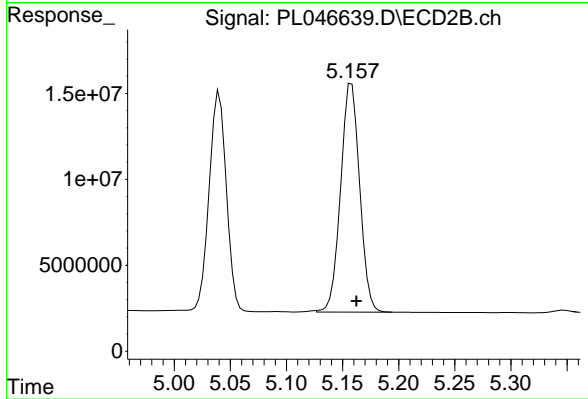
Manual Integrations
APPROVED
 mohammad
 3/29/2019 10:15:58 AM



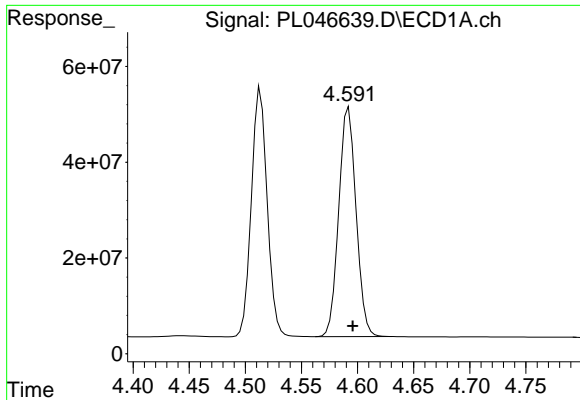
#3 gamma-BHC (Lindane)
 R.T.: 4.652 min
 Delta R.T.: -0.004 min
 Response: 153676713
 Conc: 51.35 ng/ml



#4 Heptachlor
 R.T.: 4.352 min
 Delta R.T.: -0.004 min
 Response: 538058486
 Conc: 48.80 ng/ml



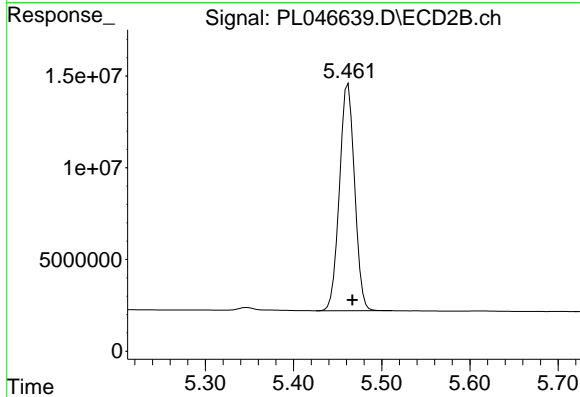
#4 Heptachlor
 R.T.: 5.157 min
 Delta R.T.: -0.006 min
 Response: 156952172
 Conc: 51.03 ng/ml m



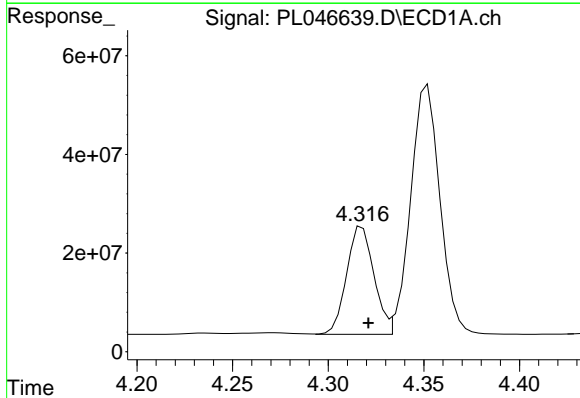
#5 Aldrin
 R.T.: 4.592 min
 Delta R.T.: -0.004 min
 Response: 514880263
 Conc: 49.92 ng/ml

Instrument :
 ECD_L
ClientSampleId :
 PSTDCCC050

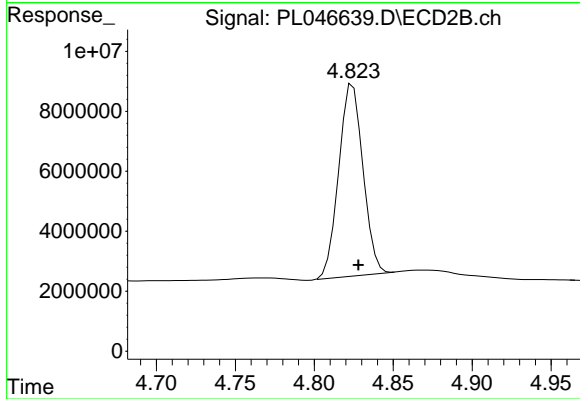
Manual Integrations
APPROVED
 mohammad
 3/29/2019 10:15:58 AM



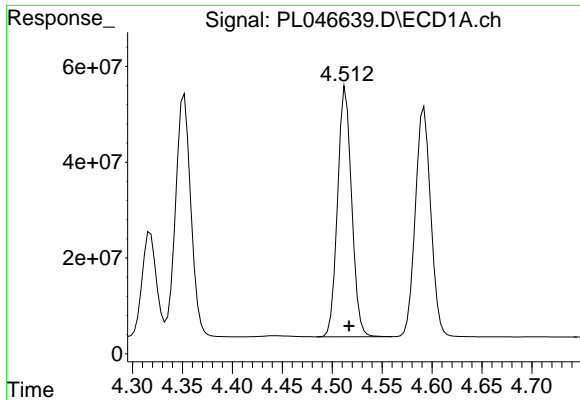
#5 Aldrin
 R.T.: 5.462 min
 Delta R.T.: -0.005 min
 Response: 147396898
 Conc: 51.45 ng/ml



#6 beta-BHC
 R.T.: 4.318 min
 Delta R.T.: -0.003 min
 Response: 217274611
 Conc: 48.26 ng/ml



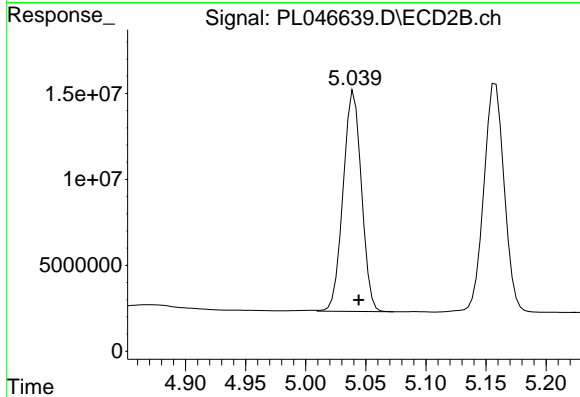
#6 beta-BHC
 R.T.: 4.824 min
 Delta R.T.: -0.003 min
 Response: 68544921
 Conc: 51.70 ng/ml



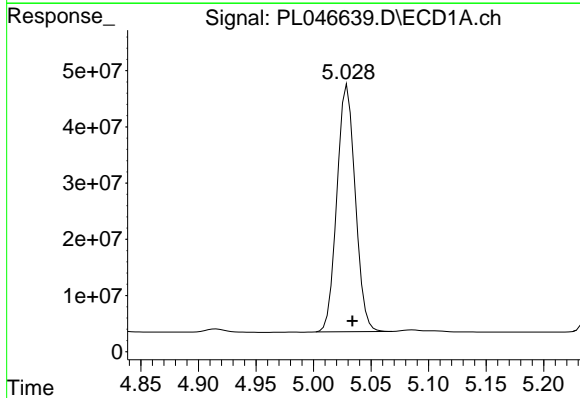
#7 delta-BHC
 R.T.: 4.513 min
 Delta R.T.: -0.003 min
 Response: 511194897
 Conc: 50.50 ng/ml

Instrument :
 ECD_L
 ClientSampled :
 PSTDCCC050

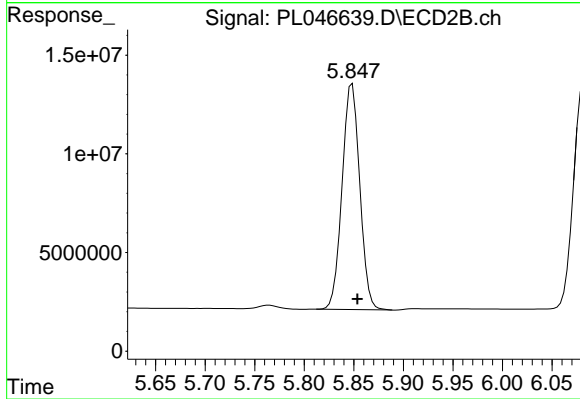
Manual Integrations
 APPROVED
 mohammad
 3/29/2019 10:15:58 AM



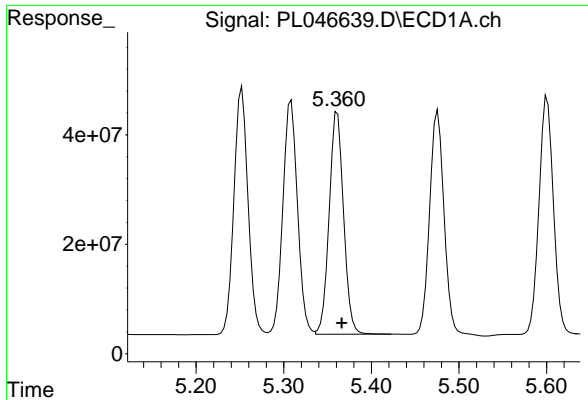
#7 delta-BHC
 R.T.: 5.039 min
 Delta R.T.: -0.005 min
 Response: 136521024
 Conc: 58.84 ng/ml m



#8 Heptachlor epoxide
 R.T.: 5.030 min
 Delta R.T.: -0.004 min
 Response: 487982485
 Conc: 50.03 ng/ml



#8 Heptachlor epoxide
 R.T.: 5.847 min
 Delta R.T.: -0.007 min
 Response: 141946709
 Conc: 53.82 ng/ml m

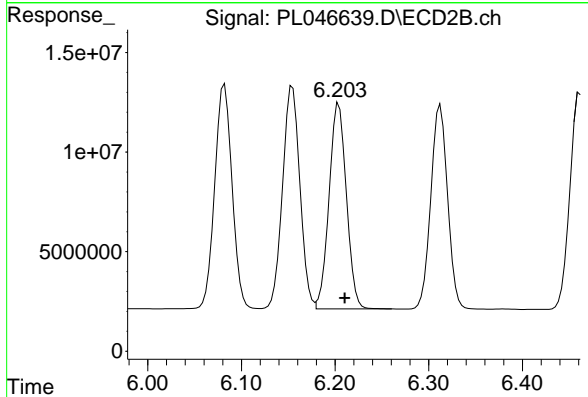


#9 Endosulfan I

R.T.: 5.361 min
 Delta R.T.: -0.005 min
 Response: 464721692
 Conc: 49.43 ng/ml

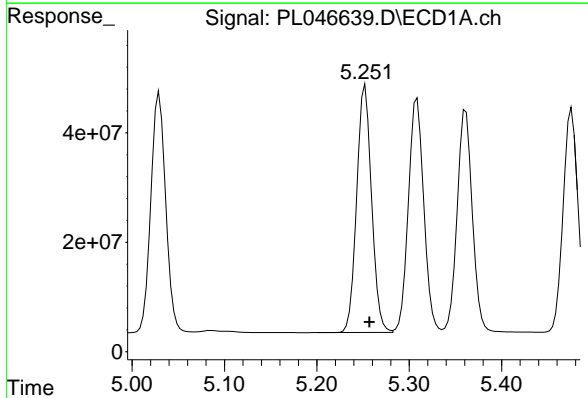
Instrument :
 ECD_L
 ClientSampled :
 PSTDCCC050

Manual Integrations
 APPROVED
 mohammad
 3/29/2019 10:15:58 AM



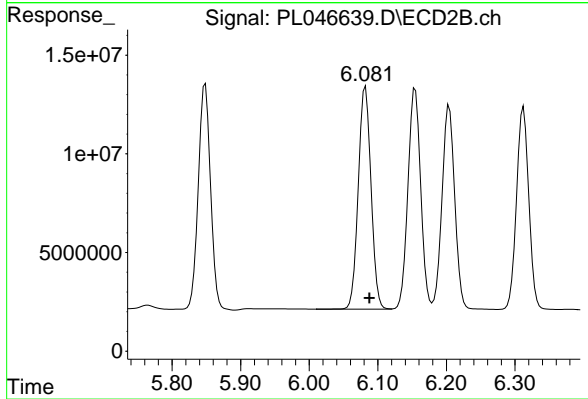
#9 Endosulfan I

R.T.: 6.204 min
 Delta R.T.: -0.006 min
 Response: 132839177
 Conc: 50.90 ng/ml



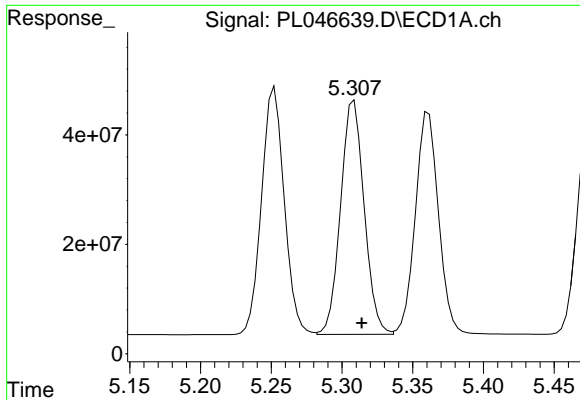
#10 gamma-Chlordane

R.T.: 5.252 min
 Delta R.T.: -0.005 min
 Response: 506121548
 Conc: 49.27 ng/ml



#10 gamma-Chlordane

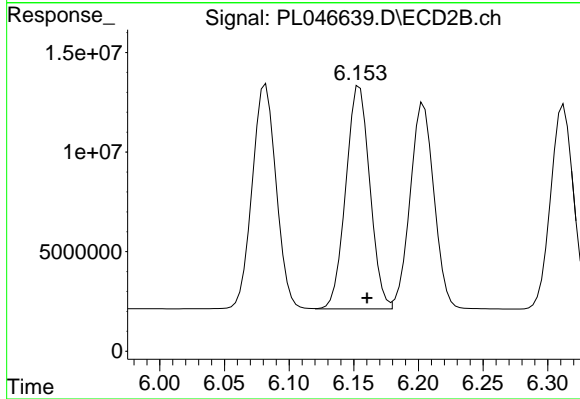
R.T.: 6.082 min
 Delta R.T.: -0.006 min
 Response: 145366927
 Conc: 51.22 ng/ml



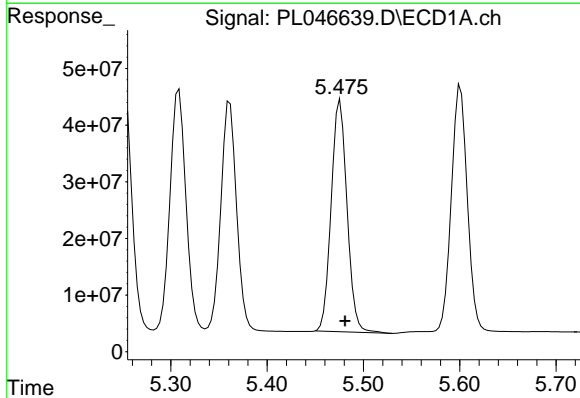
#11 alpha-Chlordane
 R.T.: 5.309 min
 Delta R.T.: -0.005 min
 Response: 496848855
 Conc: 49.00 ng/ml

Instrument :
 ECD_L
 ClientSampled :
 PSTDCCC050

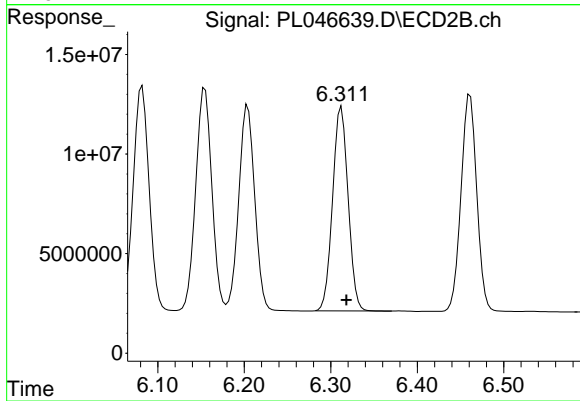
Manual Integrations
 APPROVED
 mohammad
 3/29/2019 10:15:58 AM



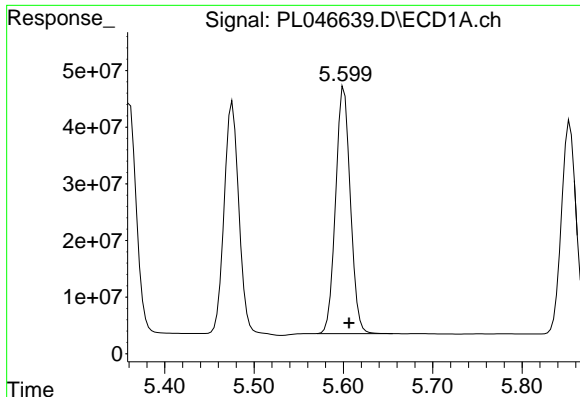
#11 alpha-Chlordane
 R.T.: 6.155 min
 Delta R.T.: -0.006 min
 Response: 144449505
 Conc: 50.92 ng/ml



#12 4,4'-DDE
 R.T.: 5.476 min
 Delta R.T.: -0.005 min
 Response: 468889871
 Conc: 50.93 ng/ml



#12 4,4'-DDE
 R.T.: 6.312 min
 Delta R.T.: -0.006 min
 Response: 127172849
 Conc: 51.23 ng/ml

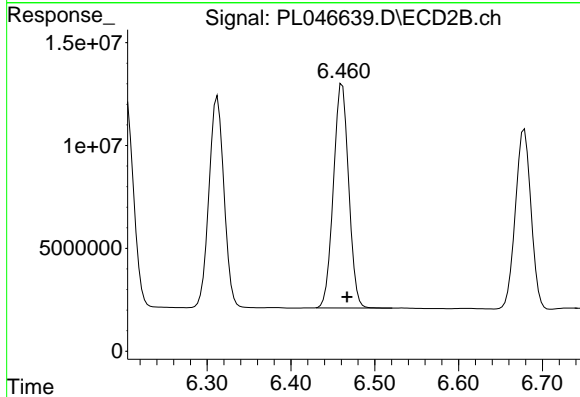


#13 Dieldrin

R.T.: 5.601 min
 Delta R.T.: -0.005 min
 Response: 498953707
 Conc: 49.72 ng/ml

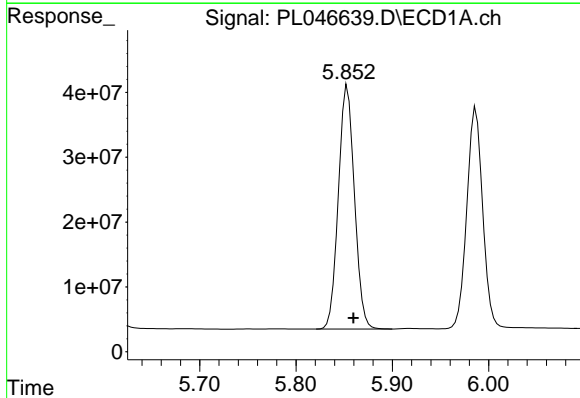
Instrument :
 ECD_L
 ClientSampleId :
 PSTDCCC050

Manual Integrations
 APPROVED
 mohammad
 3/29/2019 10:15:58 AM



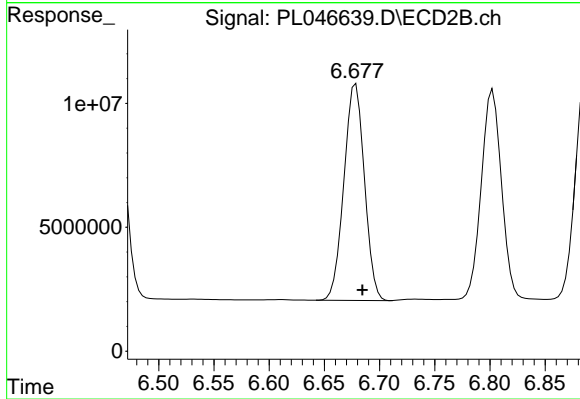
#13 Dieldrin

R.T.: 6.461 min
 Delta R.T.: -0.006 min
 Response: 137602567
 Conc: 50.76 ng/ml



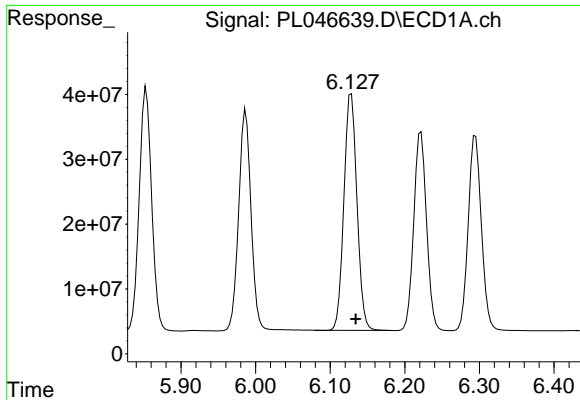
#14 Endrin

R.T.: 5.854 min
 Delta R.T.: -0.006 min
 Response: 435457161
 Conc: 46.23 ng/ml



#14 Endrin

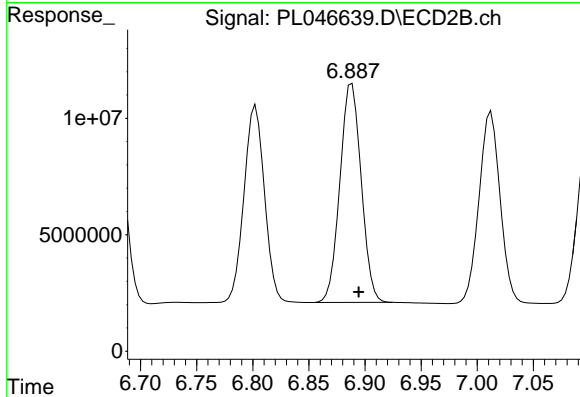
R.T.: 6.679 min
 Delta R.T.: -0.006 min
 Response: 113062259
 Conc: 47.31 ng/ml



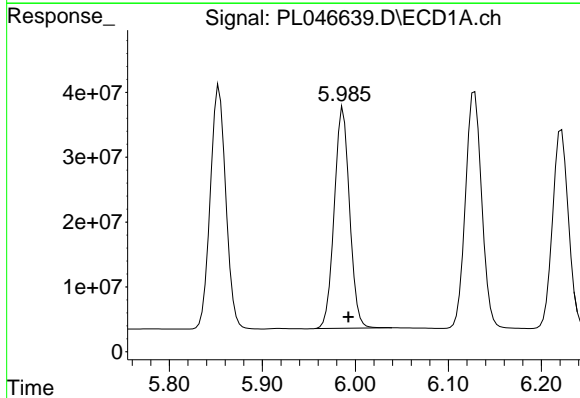
#15 Endosulfan II
 R.T.: 6.128 min
 Delta R.T.: -0.006 min
 Response: 442773380
 Conc: 49.42 ng/ml

Instrument :
 ECD_L
ClientSampled :
 PSTDCCC050

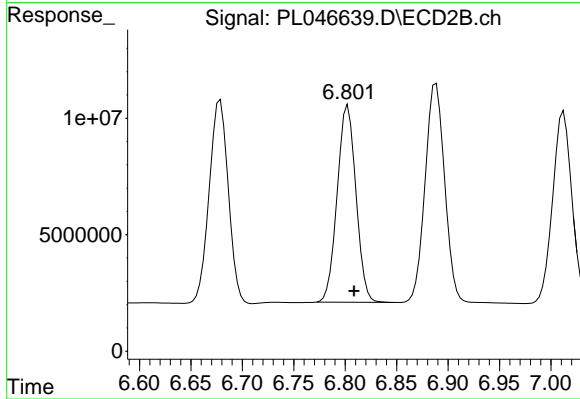
Manual Integrations
APPROVED
 mohammad
 3/29/2019 10:15:58 AM



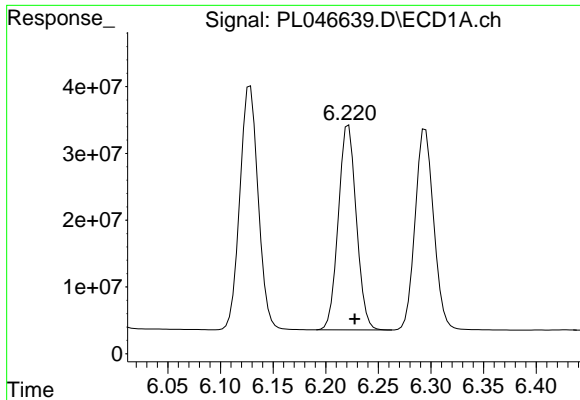
#15 Endosulfan II
 R.T.: 6.888 min
 Delta R.T.: -0.006 min
 Response: 124002757
 Conc: 51.39 ng/ml



#16 4,4'-DDD
 R.T.: 5.987 min
 Delta R.T.: -0.006 min
 Response: 389880590
 Conc: 51.58 ng/ml



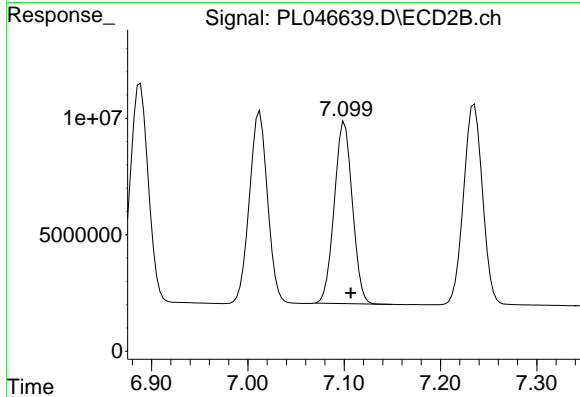
#16 4,4'-DDD
 R.T.: 6.803 min
 Delta R.T.: -0.006 min
 Response: 107305047
 Conc: 53.33 ng/ml



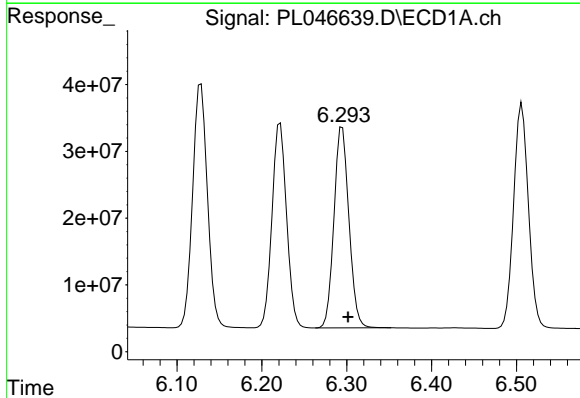
#17 4,4'-DDT
 R.T.: 6.222 min
 Delta R.T.: -0.006 min
 Response: 365976416
 Conc: 48.32 ng/ml

Instrument :
 ECD_L
ClientSampled :
 PSTDCCC050

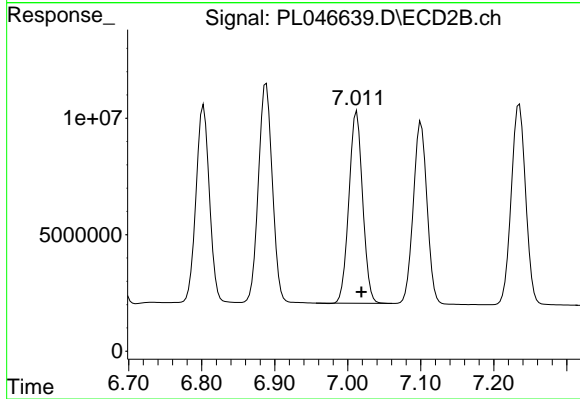
Manual Integrations
APPROVED
 mohammad
 3/29/2019 10:15:58 AM



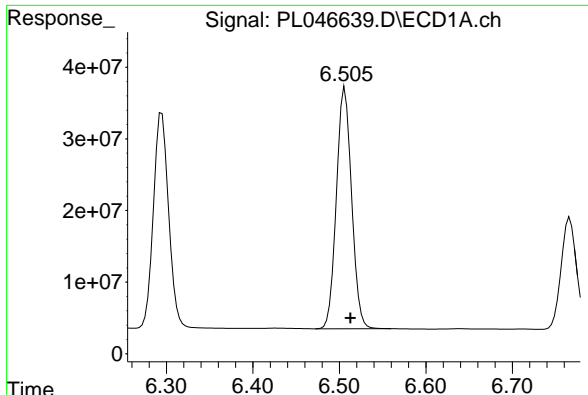
#17 4,4'-DDT
 R.T.: 7.101 min
 Delta R.T.: -0.006 min
 Response: 101845778
 Conc: 48.57 ng/ml



#18 Endrin aldehyde
 R.T.: 6.295 min
 Delta R.T.: -0.007 min
 Response: 368256993
 Conc: 49.13 ng/ml



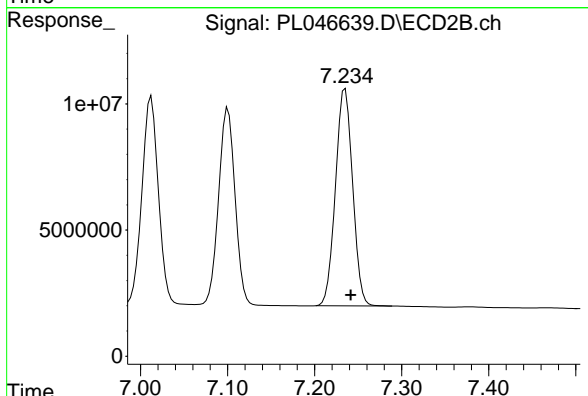
#18 Endrin aldehyde
 R.T.: 7.012 min
 Delta R.T.: -0.006 min
 Response: 107575006
 Conc: 50.65 ng/ml



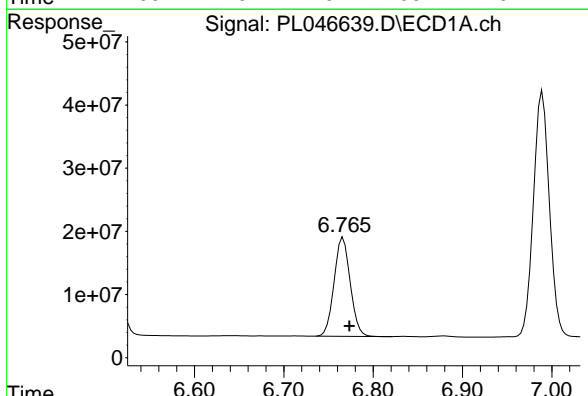
#19 Endosulfan Sulfate
 R.T.: 6.506 min
 Delta R.T.: -0.006 min
 Response: 408940273
 Conc: 49.80 ng/ml

Instrument :
 ECD_L
 ClientSampleId :
 PSTDCCC050

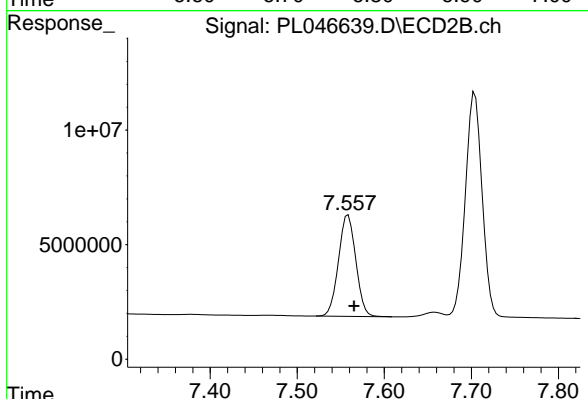
Manual Integrations
 APPROVED
 mohammad
 3/29/2019 10:15:58 AM



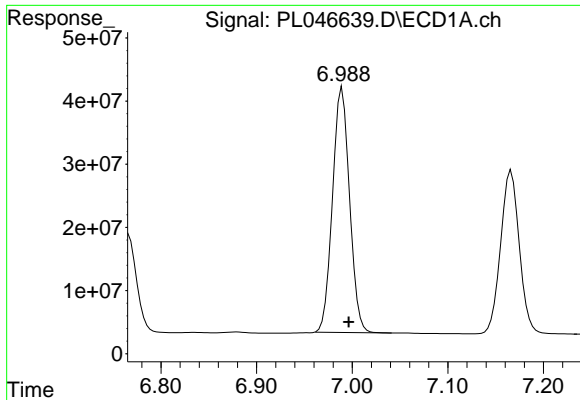
#19 Endosulfan Sulfate
 R.T.: 7.235 min
 Delta R.T.: -0.006 min
 Response: 118057812
 Conc: 50.05 ng/ml



#20 Methoxychlor
 R.T.: 6.766 min
 Delta R.T.: -0.007 min
 Response: 195679917
 Conc: 46.04 ng/ml



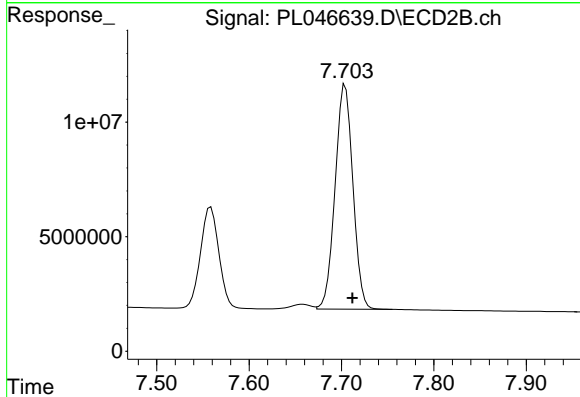
#20 Methoxychlor
 R.T.: 7.559 min
 Delta R.T.: -0.007 min
 Response: 61189659
 Conc: 48.00 ng/ml



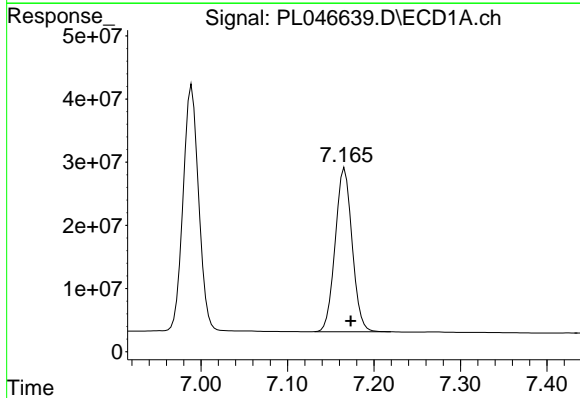
#21 Endrin ketone
 R.T.: 6.990 min
 Delta R.T.: -0.007 min
 Response: 479020835
 Conc: 51.80 ng/ml

Instrument :
 ECD_L
ClientSampled :
 PSTDCCC050

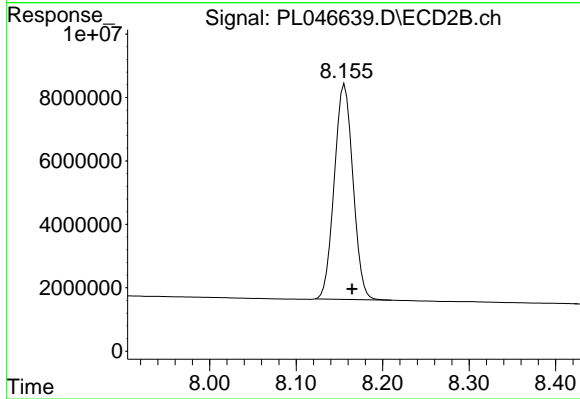
Manual Integrations
APPROVED
 mohammad
 3/29/2019 10:15:58 AM



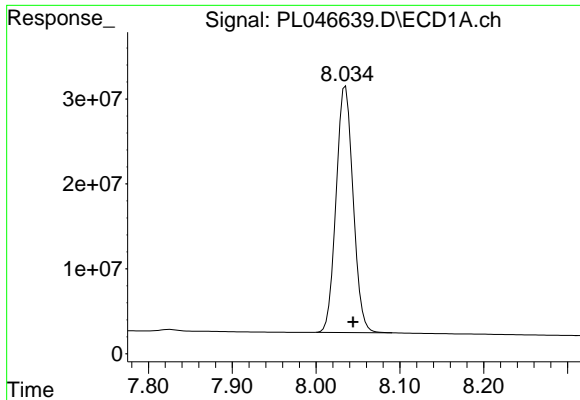
#21 Endrin ketone
 R.T.: 7.704 min
 Delta R.T.: -0.008 min
 Response: 131468484
 Conc: 52.91 ng/ml



#22 Mirex
 R.T.: 7.166 min
 Delta R.T.: -0.007 min
 Response: 350407618
 Conc: 48.10 ng/ml



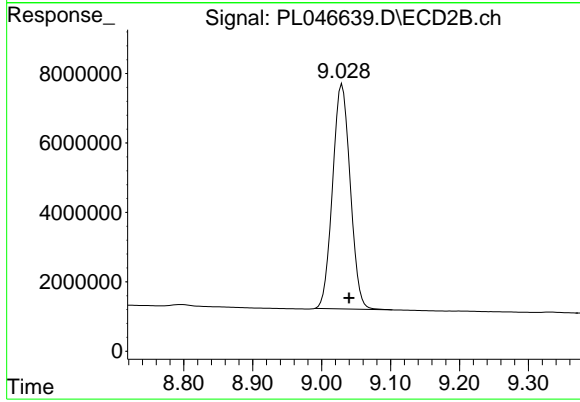
#22 Mirex
 R.T.: 8.156 min
 Delta R.T.: -0.009 min
 Response: 101408483
 Conc: 50.70 ng/ml



#28 Decachlorobiphenyl
R.T.: 8.035 min
Delta R.T.: -0.009 min
Response: 408512516
Conc: 48.57 ng/ml

Instrument :
ECD_L
ClientSampleId :
PSTDCCC050

Manual Integrations
APPROVED
mohammad
3/29/2019 10:15:58 AM



#28 Decachlorobiphenyl
R.T.: 9.030 min
Delta R.T.: -0.010 min
Response: 115117115
Conc: 49.65 ng/ml