

Data Path : Z:\pestpcbsrv\HPCHEM1\ECD_L\Data\PL033022\
 Data File : PL073748.D
 Signal(s) : Signal #1: ECD1A.ch Signal #2: ECD2B.ch
 Acq On : 30 Mar 2022 12:44
 Operator : AR\AJ
 Sample : I.BLK
 Misc :
 ALS Vial : 2 Sample Multiplier: 1

Instrument :
 ECD_L
 ClientSampleId :

Integration File signal 1: autoint1.e
 Integration File signal 2: autoint2.e
 Quant Time: Mar 31 00:39:57 2022
 Quant Method : Z:\pestpcbsrv\HPCHEM1\ECD_L\methods\PL031122.M
 Quant Title : GC Extractables
 QLast Update : Mon Mar 14 04:12:46 2022
 Response via : Initial Calibration
 Integrator: ChemStation

Volume Inj. : 1 µl
 Signal #1 Phase : ZB-MR2 Signal #2 Phase: ZB-MR1
 Signal #1 Info : 30M x 0.32mm x0.2 Signal #2 Info : 30M x 0.32mm x0.5µm

	Compound	RT#1	RT#2	Resp#1	Resp#2	ng/ml	ng/ml

System Monitoring Compounds							
1)	SA Tetrachlo...	4.651	5.486	7177799	38804886	22.411	23.644
28)	SA Decachlor...	10.422	11.332	12153615	39948185	23.901	22.340
Target Compounds							
3)	MA gamma-BHC...	0.000	6.472f	0	27948	N.D.	0.013 #
6)	B beta-BHC	6.135f	0.000	111762	0	0.543	N.D. #
7)	B delta-BHC	0.000	6.956	0	1622391	N.D.	0.753 #
8)	B Heptachlo...	0.000	7.926	0	492453	N.D.	0.247 #
9)	A Endosulfan I	0.000	8.310f	0	635639	N.D.	0.348 #
10)	B gamma-Chl...	7.372	8.197	91547	1789193	0.209	0.876 #
11)	B alpha-Chl...	7.430	0.000	40420	0	0.091	N.D. #
13)	MA Dieldrin	7.797f	8.587f	93308	394139	0.224	0.214
14)	MA Endrin	8.099f	0.000	74427	0	0.192	N.D. #
15)	B Endosulfa...	0.000	9.096f	0	454994	N.D.	0.296 #
16)	A 4,4'-DDD	8.250	8.967f	178038	34096	0.548	0.023 #
18)	B Endrin al...	8.581	0.000	943807	0	2.984	N.D. #
19)	B Endosulfa...	0.000	9.459f	0	87489	N.D.	0.056 #
20)	A Methoxychlor	0.000	9.797	0	33776	N.D.	0.037 #
21)	B Endrin ke...	0.000	9.956f	0	91647	N.D.	0.056 #
25)	Chlordane-3	7.372	8.197	91547	1789193	2.242	6.599 #
26)	Chlordane-4	7.430	8.310f	40420	635639	0.912	1.919 #

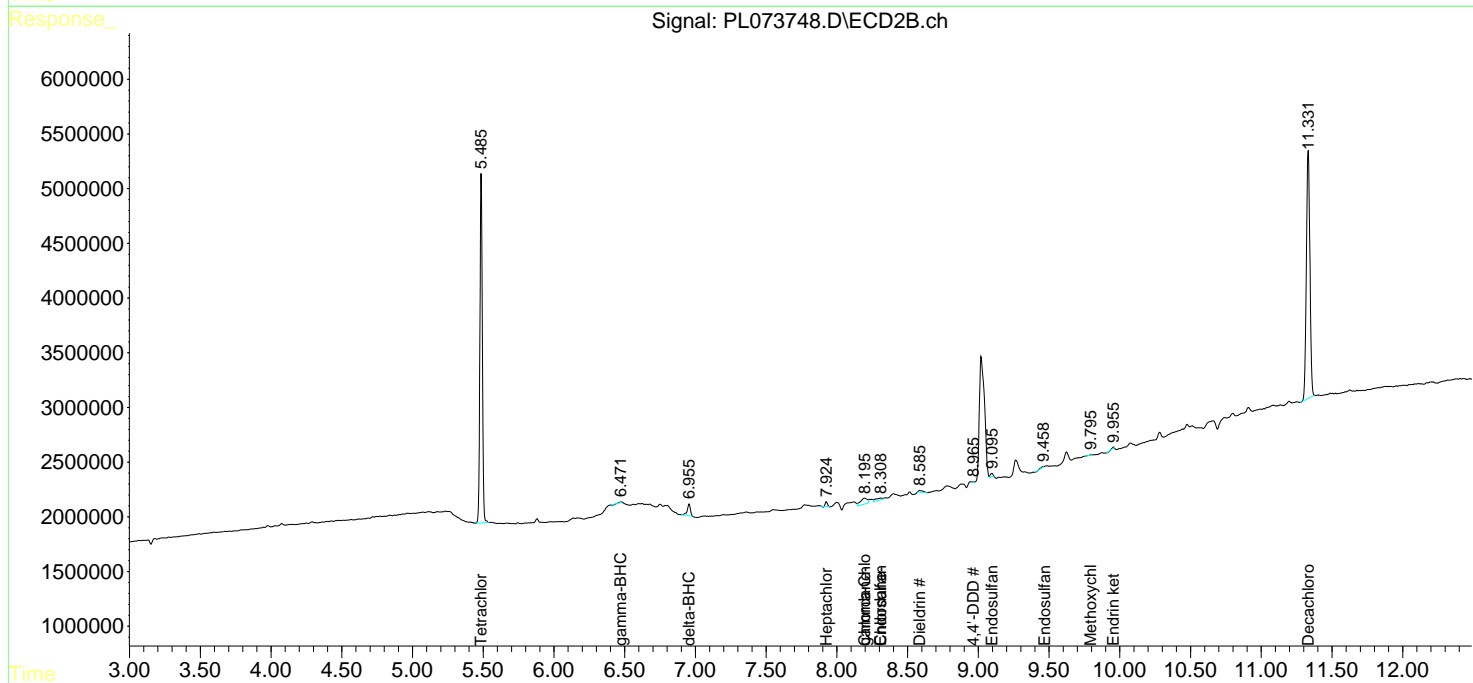
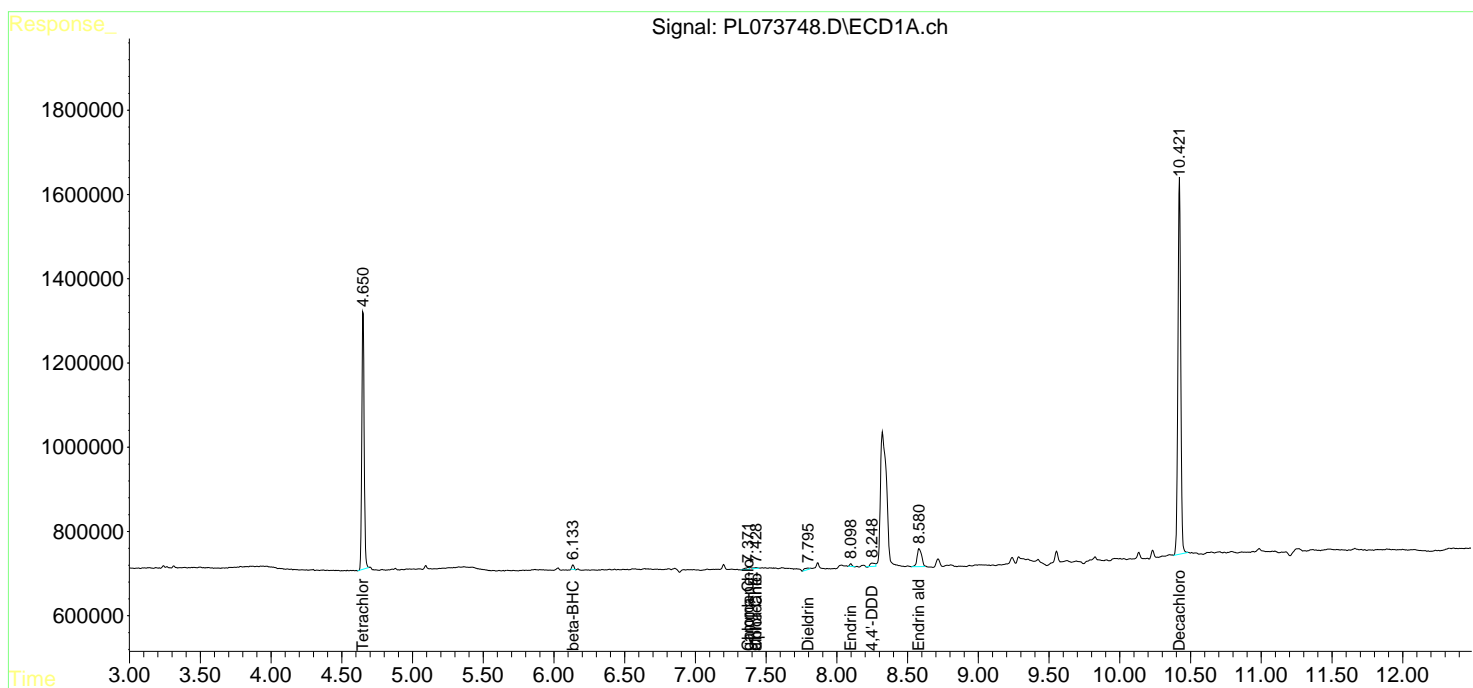
(f)=RT Delta > 1/2 Window (#)=Amounts differ by > 25% (m)=manual int.

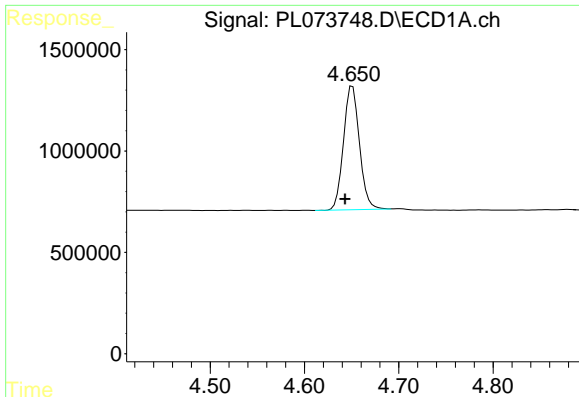
Data Path : Z:\pestpcbsrv\HPCHEM1\ECD_L\Data\PL033022\
 Data File : PL073748.D
 Signal(s) : Signal #1: ECD1A.ch Signal #2: ECD2B.ch
 Acq On : 30 Mar 2022 12:44
 Operator : AR\AJ
 Sample : I.BLK
 Misc :
 ALS Vial : 2 Sample Multiplier: 1

Instrument :
 ECD_L
 ClientSampleId :

Integration File signal 1: autoint1.e
 Integration File signal 2: autoint2.e
 Quant Time: Mar 31 00:39:57 2022
 Quant Method : Z:\pestpcbsrv\HPCHEM1\ECD_L\methods\PL031122.M
 Quant Title : GC Extractables
 QLast Update : Mon Mar 14 04:12:46 2022
 Response via : Initial Calibration
 Integrator: ChemStation

Volume Inj. : 1 µl
 Signal #1 Phase : ZB-MR2 Signal #2 Phase: ZB-MR1
 Signal #1 Info : 30M x 0.32mm x0.2 Signal #2 Info : 30M x 0.32mm x0.5µm

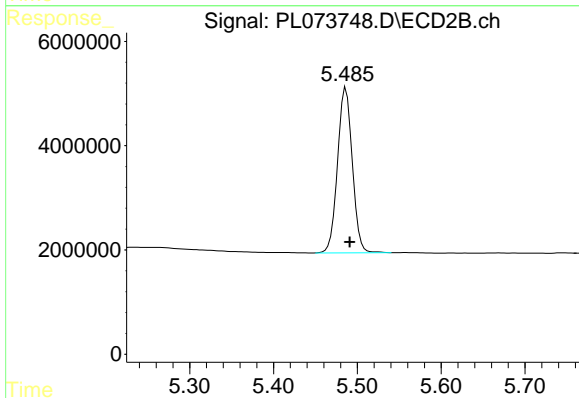




#1 Tetrachloro-m-xylene

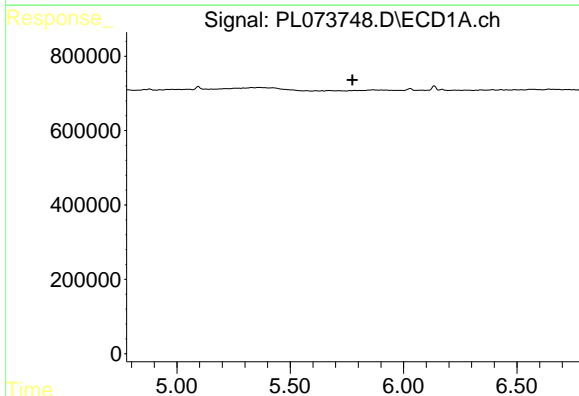
R.T.: 4.651 min
 Delta R.T.: 0.008 min
 Response: 7177799
 Conc: 22.41 ng/ml

Instrument :
 ECD_L
 ClientSampleId :



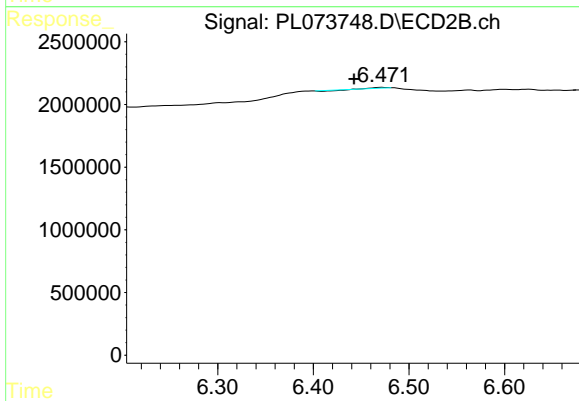
#1 Tetrachloro-m-xylene

R.T.: 5.486 min
 Delta R.T.: -0.005 min
 Response: 38804886
 Conc: 23.64 ng/ml



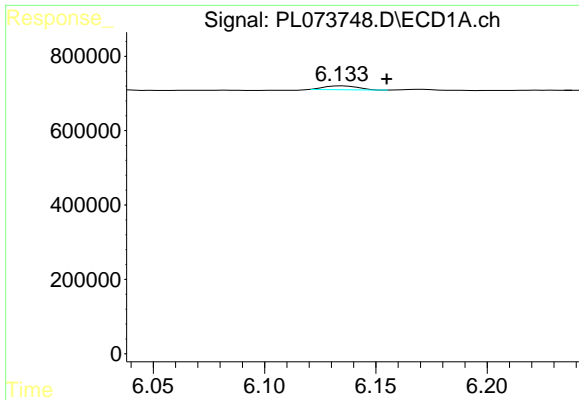
#3 gamma-BHC (Lindane)

R.T.: 0.000 min
 Exp R.T. : 5.775 min
 Response: 0
 Conc: N.D.



#3 gamma-BHC (Lindane)

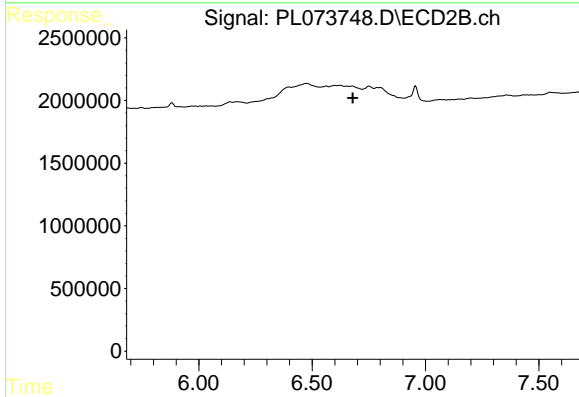
R.T.: 6.472 min
 Delta R.T.: 0.029 min
 Response: 27948
 Conc: 0.01 ng/ml



#6 beta-BHC

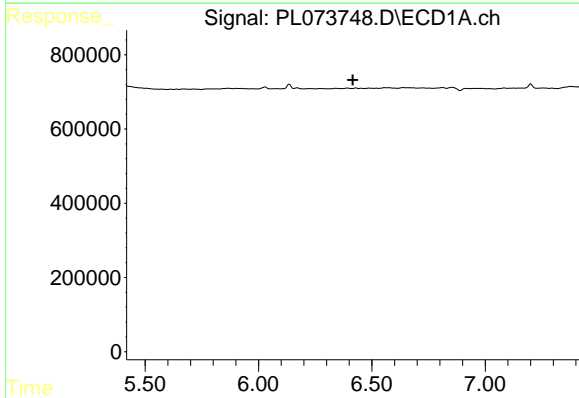
R.T.: 6.135 min
 Delta R.T.: -0.020 min
 Response: 111762
 Conc: 0.54 ng/ml

Instrument :
 ECD_L
 ClientSampleId :



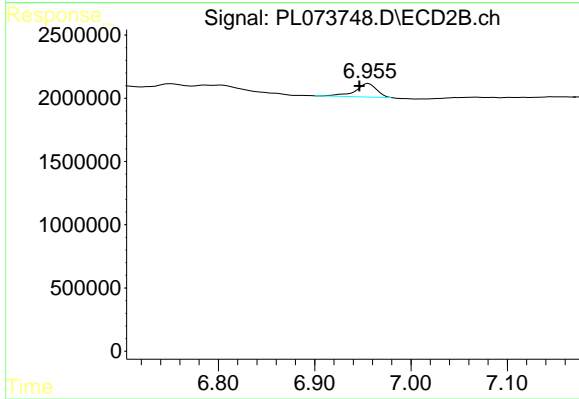
#6 beta-BHC

R.T.: 0.000 min
 Exp R.T. : 6.679 min
 Response: 0
 Conc: N.D.



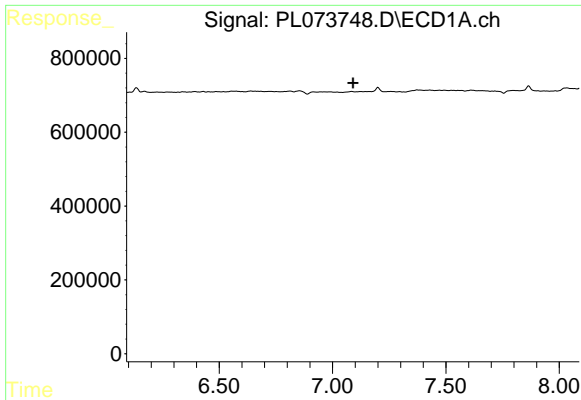
#7 delta-BHC

R.T.: 0.000 min
 Exp R.T. : 6.416 min
 Response: 0
 Conc: N.D.



#7 delta-BHC

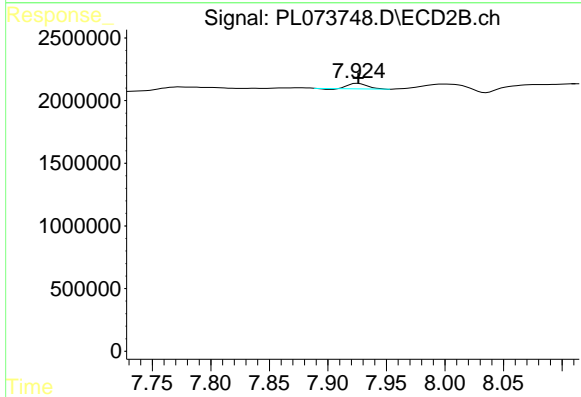
R.T.: 6.956 min
 Delta R.T.: 0.010 min
 Response: 1622391
 Conc: 0.75 ng/ml



#8 Heptachlor epoxide

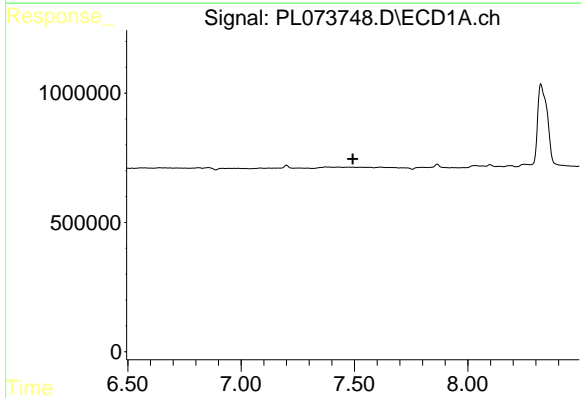
R.T.: 0.000 min
 Exp R.T.: 7.090 min
 Response: 0
 Conc: N.D.

Instrument :
 ECD_L
 ClientSampleId :



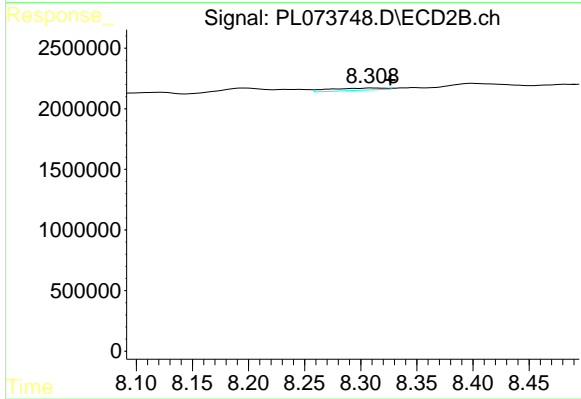
#8 Heptachlor epoxide

R.T.: 7.926 min
 Delta R.T.: 0.000 min
 Response: 492453
 Conc: 0.25 ng/ml



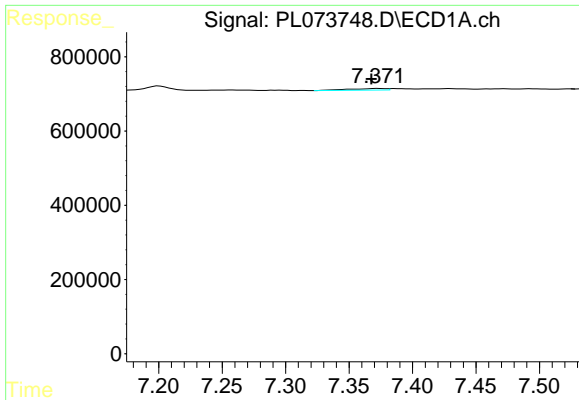
#9 Endosulfan I

R.T.: 0.000 min
 Exp R.T.: 7.493 min
 Response: 0
 Conc: N.D.



#9 Endosulfan I

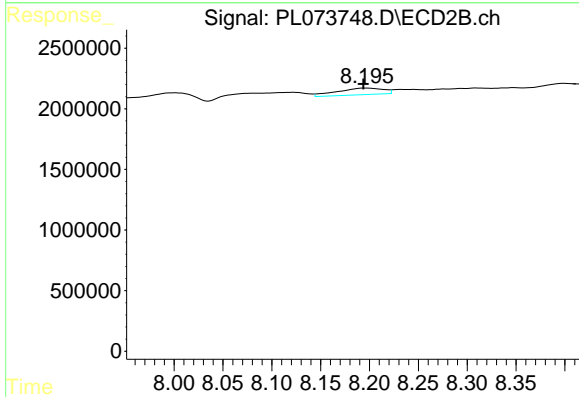
R.T.: 8.310 min
 Delta R.T.: -0.017 min
 Response: 635639
 Conc: 0.35 ng/ml



#10 gamma-Chlordane

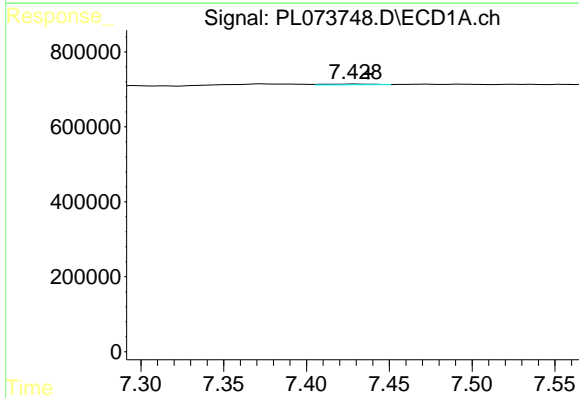
R.T.: 7.372 min
 Delta R.T.: 0.005 min
 Response: 91547
 Conc: 0.21 ng/ml

Instrument :
 ECD_L
 ClientSampleId :



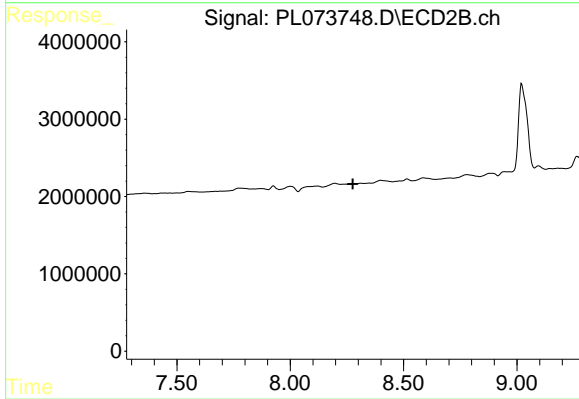
#10 gamma-Chlordane

R.T.: 8.197 min
 Delta R.T.: 0.003 min
 Response: 1789193
 Conc: 0.88 ng/ml



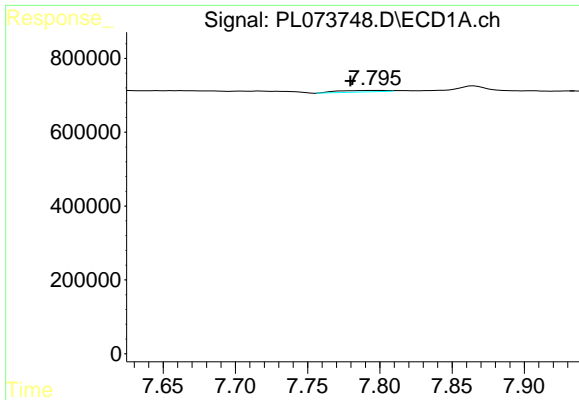
#11 alpha-Chlordane

R.T.: 7.430 min
 Delta R.T.: -0.008 min
 Response: 40420
 Conc: 0.09 ng/ml



#11 alpha-Chlordane

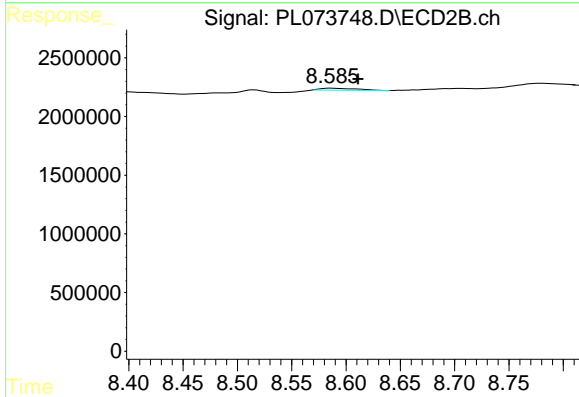
R.T.: 0.000 min
 Exp R.T. : 8.277 min
 Response: 0
 Conc: N.D.



#13 Dieldrin

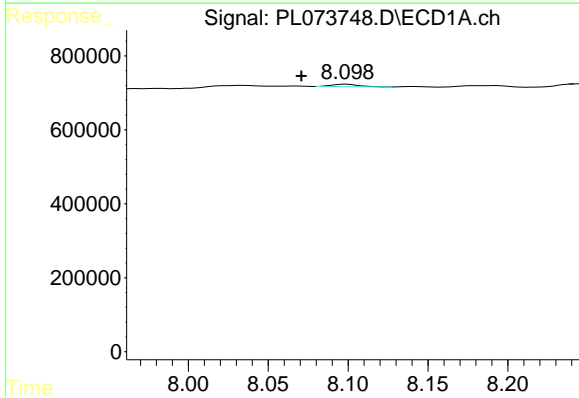
R.T.: 7.797 min
 Delta R.T.: 0.017 min
 Response: 93308
 Conc: 0.22 ng/ml

Instrument :
 ECD_L
 ClientSampleId :



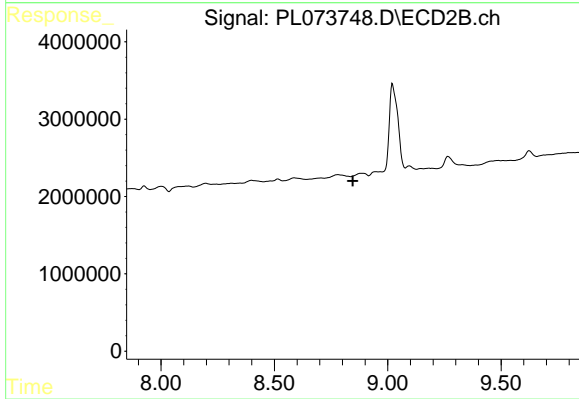
#13 Dieldrin

R.T.: 8.587 min
 Delta R.T.: -0.024 min
 Response: 394139
 Conc: 0.21 ng/ml



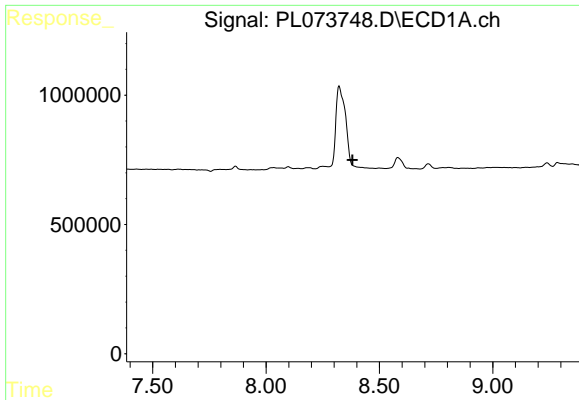
#14 Endrin

R.T.: 8.099 min
 Delta R.T.: 0.028 min
 Response: 74427
 Conc: 0.19 ng/ml



#14 Endrin

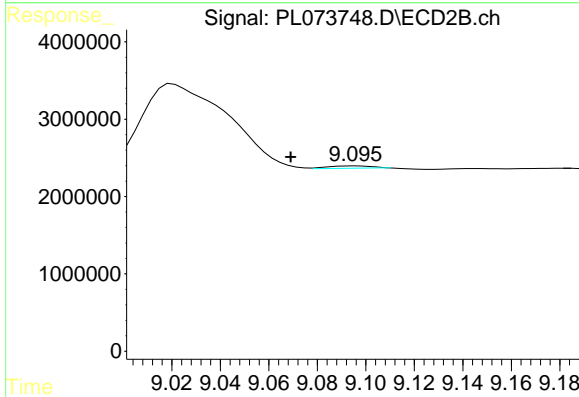
R.T.: 0.000 min
 Exp R.T. : 8.845 min
 Response: 0
 Conc: N.D.



#15 Endosulfan II

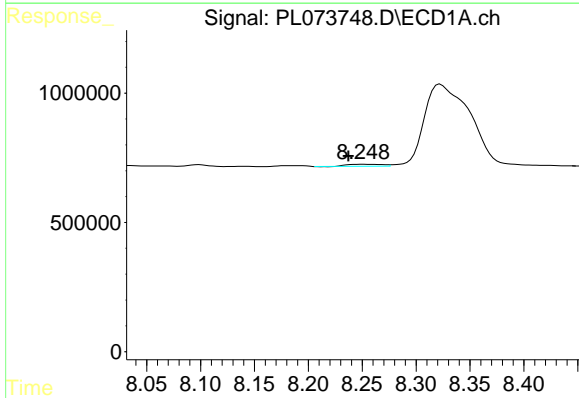
R.T.: 0.000 min
 Exp R.T.: 8.382 min
 Response: 0
 Conc: N.D.

Instrument :
 ECD_L
 ClientSampleId :



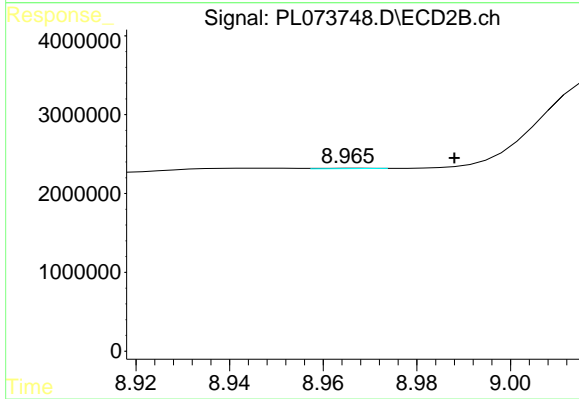
#15 Endosulfan II

R.T.: 9.096 min
 Delta R.T.: 0.027 min
 Response: 454994
 Conc: 0.30 ng/ml



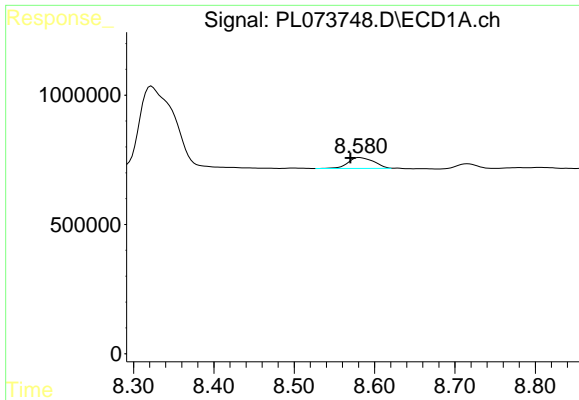
#16 4,4'-DDD

R.T.: 8.250 min
 Delta R.T.: 0.013 min
 Response: 178038
 Conc: 0.55 ng/ml



#16 4,4'-DDD

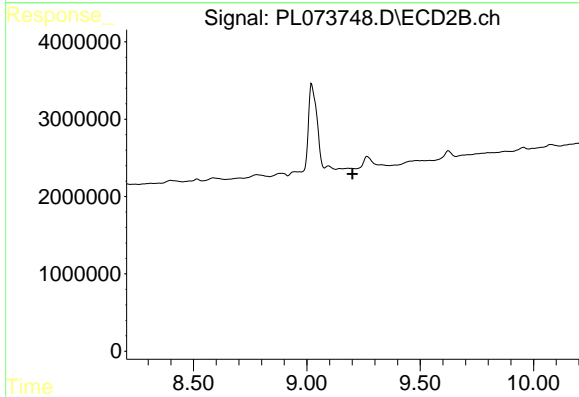
R.T.: 8.967 min
 Delta R.T.: -0.021 min
 Response: 34096
 Conc: 0.02 ng/ml



#18 Endrin aldehyde

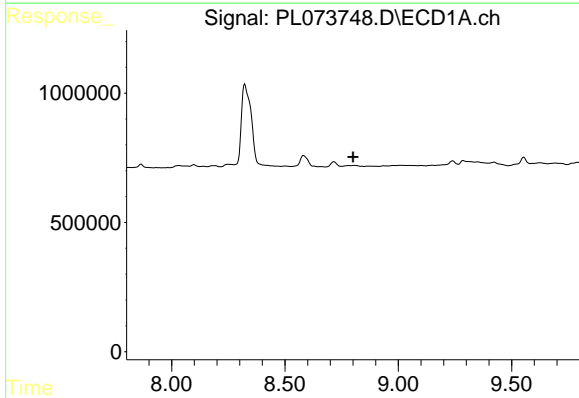
R.T.: 8.581 min
 Delta R.T.: 0.011 min
 Response: 943807
 Conc: 2.98 ng/ml

Instrument :
 ECD_L
 ClientSampleId :



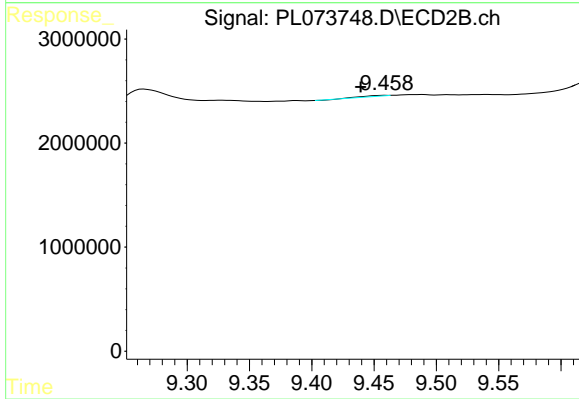
#18 Endrin aldehyde

R.T.: 0.000 min
 Exp R.T. : 9.202 min
 Response: 0
 Conc: N.D.



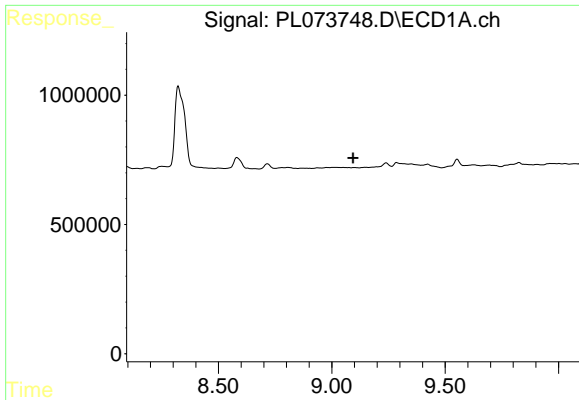
#19 Endosulfan Sulfate

R.T.: 0.000 min
 Exp R.T. : 8.801 min
 Response: 0
 Conc: N.D.



#19 Endosulfan Sulfate

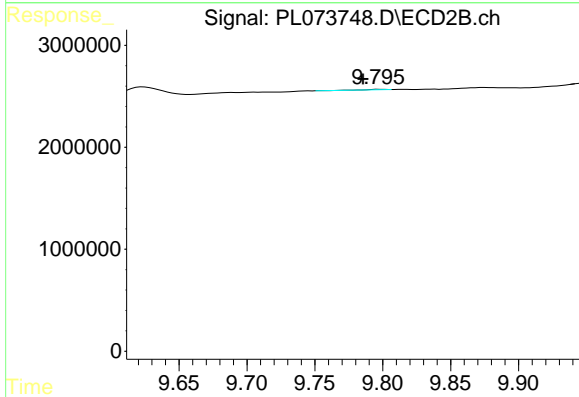
R.T.: 9.459 min
 Delta R.T.: 0.020 min
 Response: 87489
 Conc: 0.06 ng/ml



#20 Methoxychlor

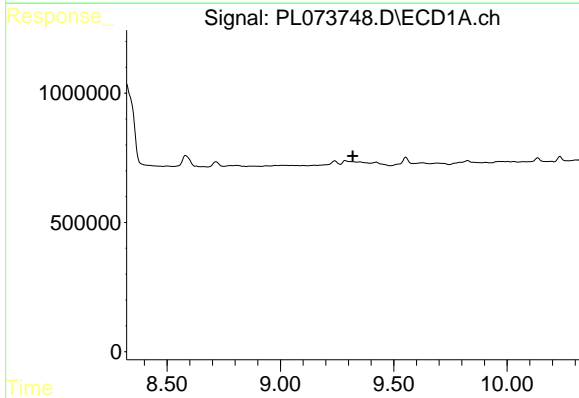
R.T.: 0.000 min
 Exp R.T.: 9.095 min
 Response: 0
 Conc: N.D.

Instrument :
 ECD_L
 ClientSampleId :



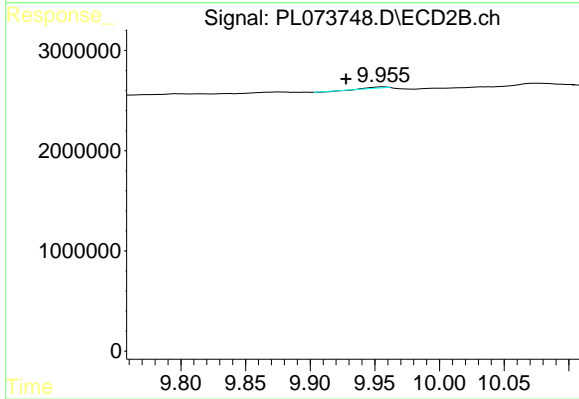
#20 Methoxychlor

R.T.: 9.797 min
 Delta R.T.: 0.012 min
 Response: 33776
 Conc: 0.04 ng/ml



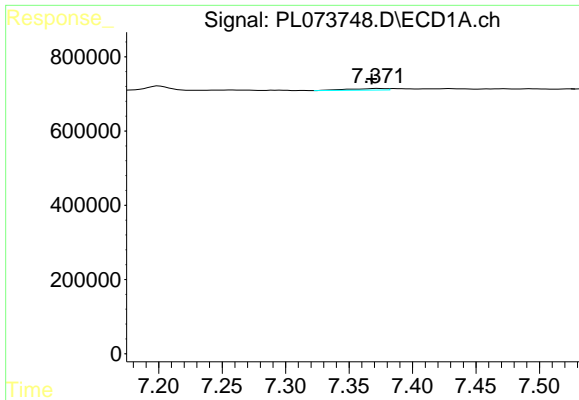
#21 Endrin ketone

R.T.: 0.000 min
 Exp R.T.: 9.320 min
 Response: 0
 Conc: N.D.



#21 Endrin ketone

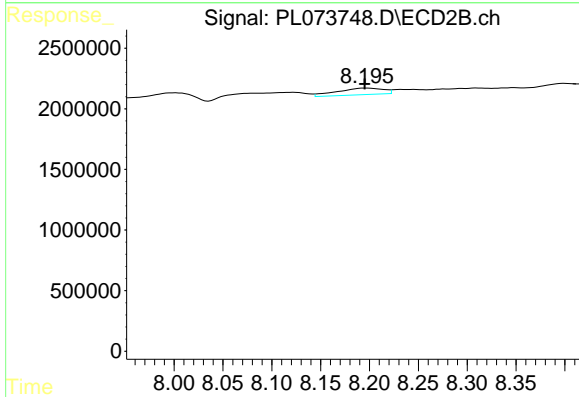
R.T.: 9.956 min
 Delta R.T.: 0.029 min
 Response: 91647
 Conc: 0.06 ng/ml



#25 Chlordane-3

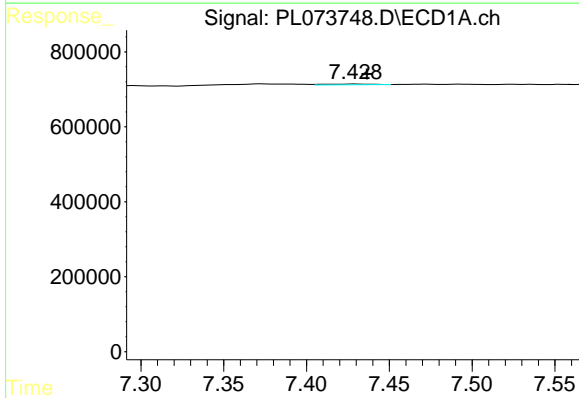
R.T.: 7.372 min
 Delta R.T.: 0.005 min
 Response: 91547
 Conc: 2.24 ng/ml

Instrument :
 ECD_L
 ClientSampleId :



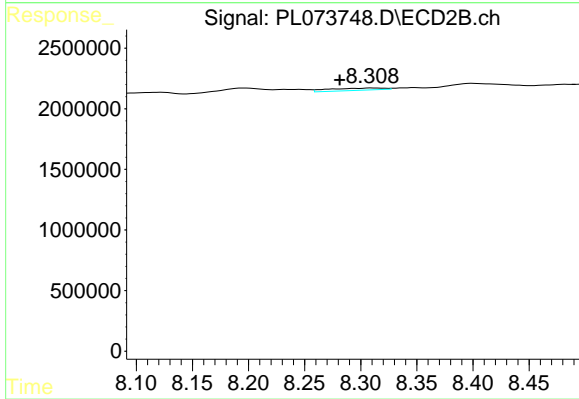
#25 Chlordane-3

R.T.: 8.197 min
 Delta R.T.: 0.001 min
 Response: 1789193
 Conc: 6.60 ng/ml



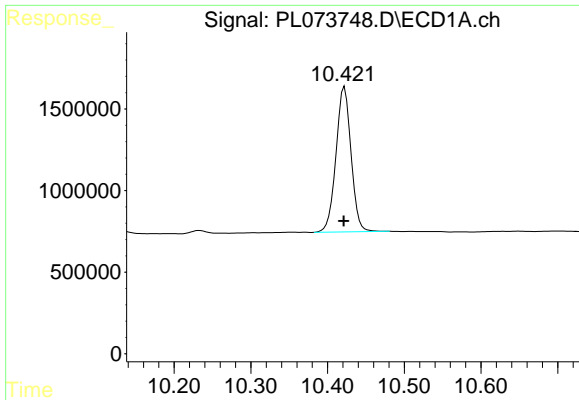
#26 Chlordane-4

R.T.: 7.430 min
 Delta R.T.: -0.007 min
 Response: 40420
 Conc: 0.91 ng/ml



#26 Chlordane-4

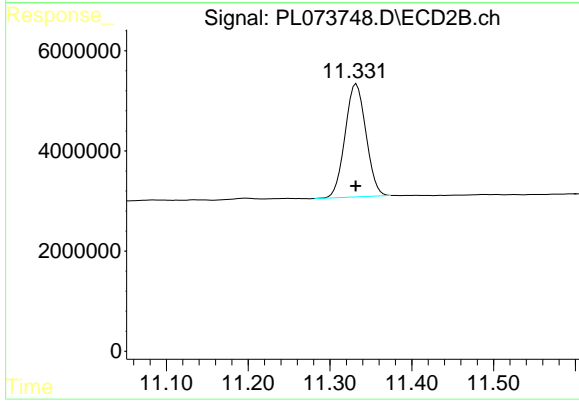
R.T.: 8.310 min
 Delta R.T.: 0.029 min
 Response: 635639
 Conc: 1.92 ng/ml



#28 Decachlorobiphenyl

R.T.: 10.422 min
Delta R.T.: 0.001 min
Response: 12153615
Conc: 23.90 ng/ml

Instrument :
ECD_L
ClientSampleId :



#28 Decachlorobiphenyl

R.T.: 11.332 min
Delta R.T.: 0.000 min
Response: 39948185
Conc: 22.34 ng/ml