

Data Path : Z:\pestpcbsrv\HPCHEM1\ECD_L\Data\PL040119\
 Data File : PL046795.D
 Signal(s) : Signal #1: ECD1A.ch Signal #2: ECD2B.ch
 Acq On : 01 Apr 2019 12:10
 Operator : AJ\SJ
 Sample : K1560-08
 Misc : LOQ TOX 100 PPB
 ALS Vial : 14 Sample Multiplier: 1

Instrument :
 ECD_L
 ClientSampleId :
 LOQ-WATER-02-QT1-2019

Integration File signal 1: autoint1.e
 Integration File signal 2: autoint2.e
 Quant Time: Apr 02 06:54:02 2019
 Quant Method : Z:\pestpcbsrv\HPCHEM1\ECD_L\methods\LTX032219.M
 Quant Title : GC Extractables
 QLast Update : Fri Mar 22 15:08:02 2019
 Response via : Initial Calibration
 Integrator: ChemStation

Volume Inj. : 2 µl
 Signal #1 Phase : Rtx-CLPesticide 1 Signal #2 Phase: Rtx-CLPesticide 1
 Signal #1 Info : 30M x 0.32mm x0.3 Signal #2 Info : 30M x 0.32mm x 0.25µm

Compound	RT#1	RT#2	Resp#1	Resp#2	ng/ml	ng/ml
----------	------	------	--------	--------	-------	-------

 System Monitoring Compounds

1) SA Tetrachlo...	3.359	3.978	139.9E6	42812217	19.762	19.565
7) SA Decachlor...	8.037	9.032	185.1E6	55293271	22.233	23.866

Target Compounds

2) Toxaphene-1	5.566	6.363	5762792	1565245	118.583	132.411
3) Toxaphene-2	6.161	6.652	12769311	1351818	98.342	96.095
4) Toxaphene-3	6.542	7.135	5171368	6155566	89.419	106.316
5) Toxaphene-4	6.754	7.219	7778987	3636202	80.637	101.621 #
6) Toxaphene-5	6.885	7.634	15232644	3119505	95.915	109.652

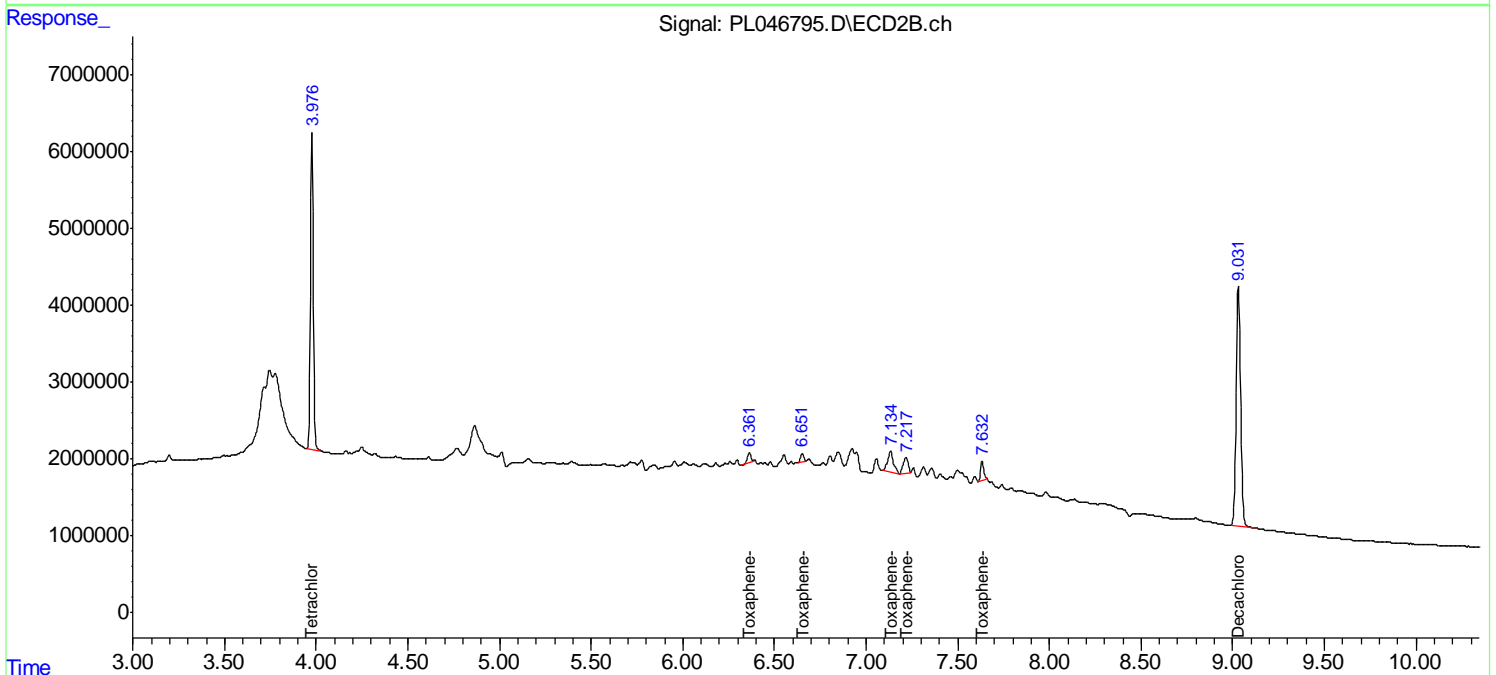
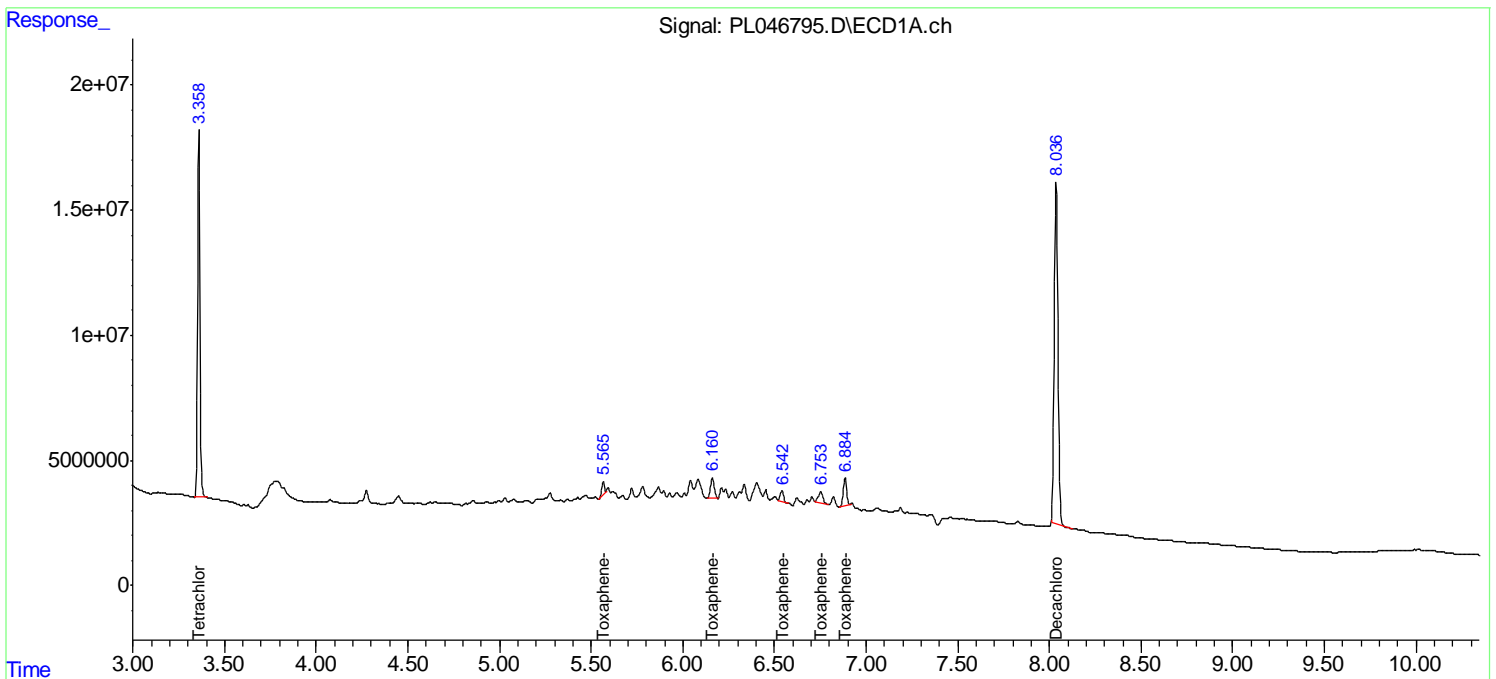
(f)=RT Delta > 1/2 Window (#)=Amounts differ by > 25% (m)=manual int.

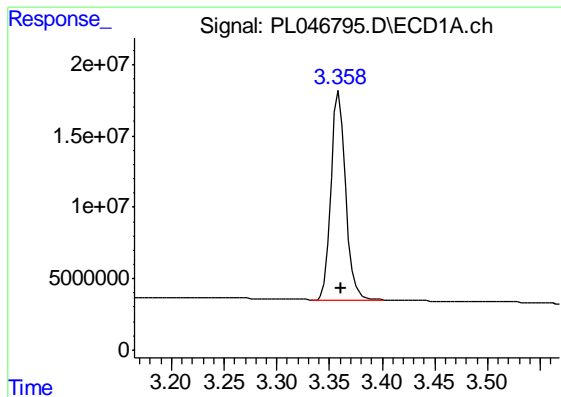
Data Path : Z:\pestpcbsrv\HPCHEM1\ECD_L\Data\PL040119\
 Data File : PL046795.D
 Signal(s) : Signal #1: ECD1A.ch Signal #2: ECD2B.ch
 Acq On : 01 Apr 2019 12:10
 Operator : AJ\SJ
 Sample : K1560-08
 Misc : LOQ TOX 100 PPB
 ALS Vial : 14 Sample Multiplier: 1

Instrument :
 ECD_L
ClientSampleId :
 LOQ-WATER-02-QT1-2019

Integration File signal 1: autoint1.e
 Integration File signal 2: autoint2.e
 Quant Time: Apr 02 06:54:02 2019
 Quant Method : Z:\pestpcbsrv\HPCHEM1\ECD_L\methods\LTX032219.M
 Quant Title : GC Extractables
 QLast Update : Fri Mar 22 15:08:02 2019
 Response via : Initial Calibration
 Integrator: ChemStation

Volume Inj. : 2 µl
 Signal #1 Phase : Rtx-CLPesticide 1 Signal #2 Phase: Rtx-CLPesticide 1
 Signal #1 Info : 30M x 0.32mm x0.3 Signal #2 Info : 30M x 0.32mm x 0.25µm

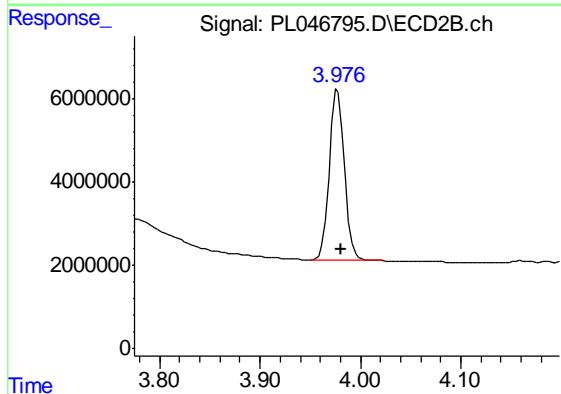




#1 Tetrachloro-m-xylene

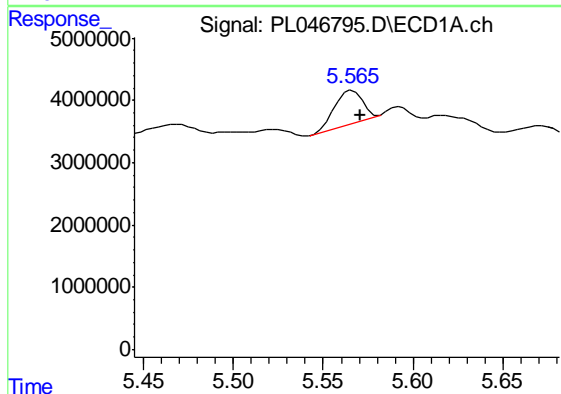
R.T.: 3.359 min
 Delta R.T.: -0.002 min
 Response: 139921901
 Conc: 19.76 ng/ml

Instrument :
 ECD_L
 ClientSampleId :
 LOQ-WATER-02-QT1-2019



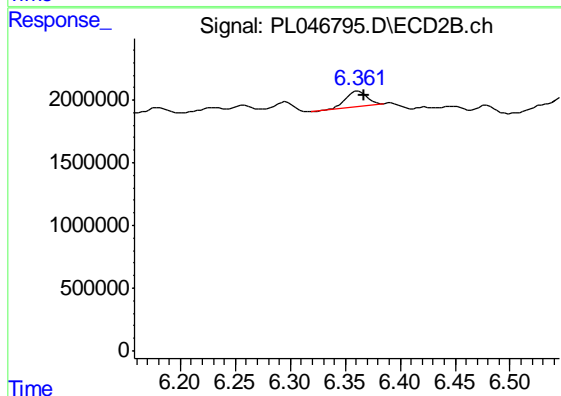
#1 Tetrachloro-m-xylene

R.T.: 3.978 min
 Delta R.T.: -0.003 min
 Response: 42812217
 Conc: 19.56 ng/ml



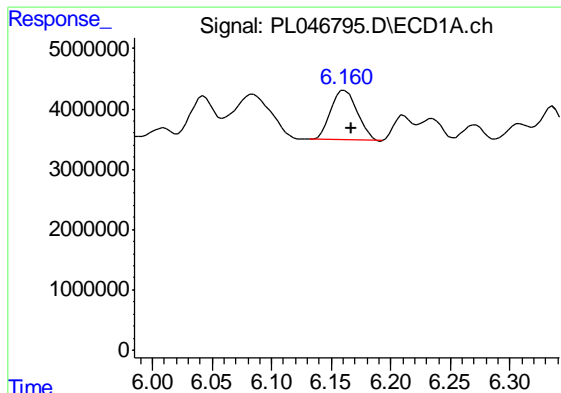
#2 Toxaphene-1

R.T.: 5.566 min
 Delta R.T.: -0.005 min
 Response: 5762792
 Conc: 118.58 ng/ml



#2 Toxaphene-1

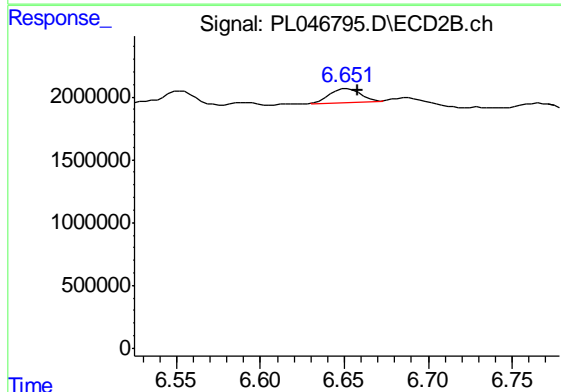
R.T.: 6.363 min
 Delta R.T.: -0.004 min
 Response: 1565245
 Conc: 132.41 ng/ml



#3 Toxaphene-2

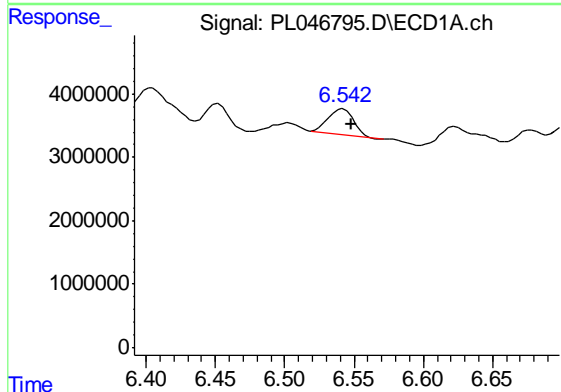
R.T.: 6.161 min
 Delta R.T.: -0.006 min
 Response: 12769311
 Conc: 98.34 ng/ml

Instrument :
 ECD_L
 ClientSampleId :
 LOQ-WATER-02-QT1-2019



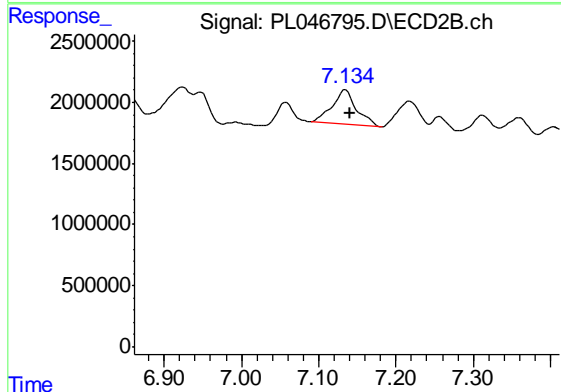
#3 Toxaphene-2

R.T.: 6.652 min
 Delta R.T.: -0.006 min
 Response: 1351818
 Conc: 96.09 ng/ml



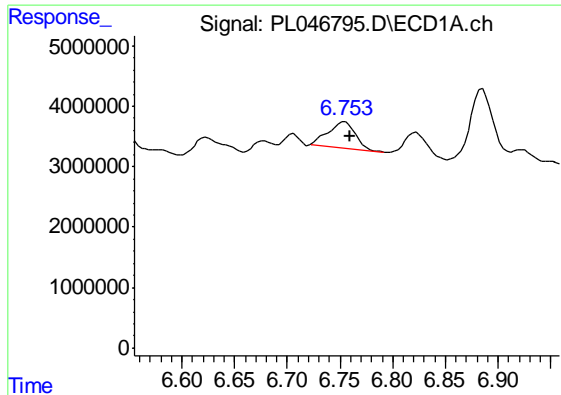
#4 Toxaphene-3

R.T.: 6.542 min
 Delta R.T.: -0.006 min
 Response: 5171368
 Conc: 89.42 ng/ml



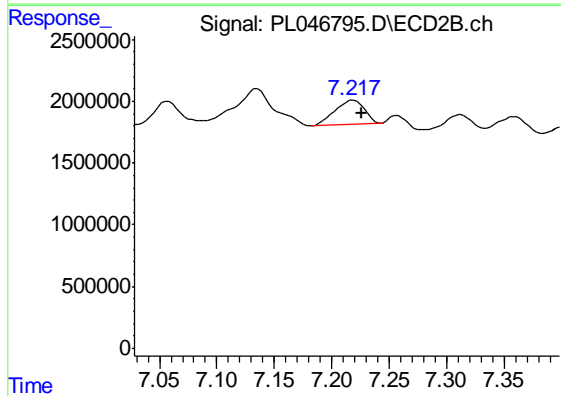
#4 Toxaphene-3

R.T.: 7.135 min
 Delta R.T.: -0.006 min
 Response: 6155566
 Conc: 106.32 ng/ml

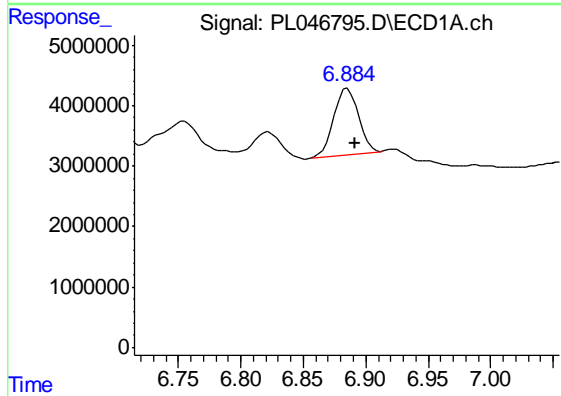


#5 Toxaphene-4
 R.T.: 6.754 min
 Delta R.T.: -0.006 min
 Response: 7778987
 Conc: 80.64 ng/ml

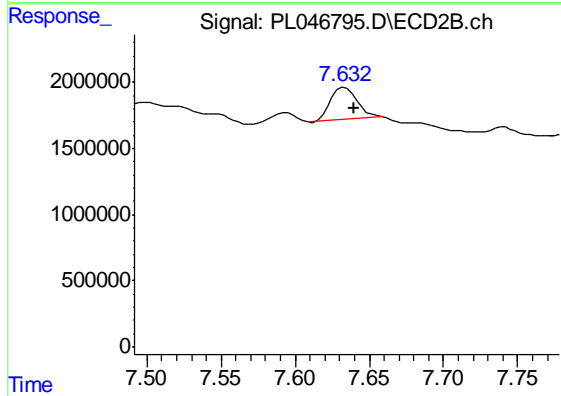
Instrument :
 ECD_L
 ClientSampleId :
 LOQ-WATER-02-QT1-2019



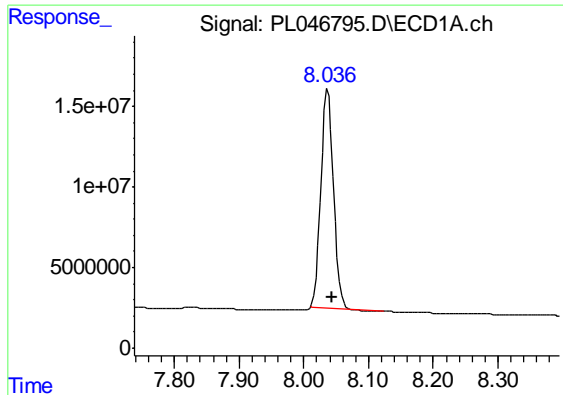
#5 Toxaphene-4
 R.T.: 7.219 min
 Delta R.T.: -0.007 min
 Response: 3636202
 Conc: 101.62 ng/ml



#6 Toxaphene-5
 R.T.: 6.885 min
 Delta R.T.: -0.007 min
 Response: 15232644
 Conc: 95.91 ng/ml



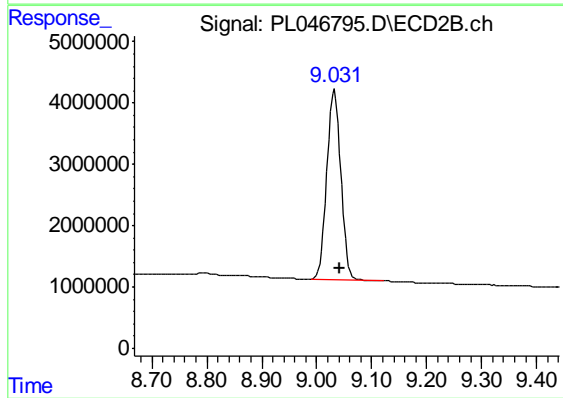
#6 Toxaphene-5
 R.T.: 7.634 min
 Delta R.T.: -0.006 min
 Response: 3119505
 Conc: 109.65 ng/ml



#7 Decachlorobiphenyl

R.T.: 8.037 min
Delta R.T.: -0.007 min
Response: 185120158
Conc: 22.23 ng/ml

Instrument :
ECD_L
ClientSampleId :
LOQ-WATER-02-QT1-2019



#7 Decachlorobiphenyl

R.T.: 9.032 min
Delta R.T.: -0.010 min
Response: 55293271
Conc: 23.87 ng/ml