

Data Path : Z:\pestpcbsrv\HPCHEM1\ECD_L\Data\PL040120\
 Data File : PL057717.D
 Signal(s) : Signal #1: ECD1A.ch Signal #2: ECD2B.ch
 Acq On : 01 Apr 2020 12:46
 Operator : AJ\MA
 Sample : PSTDCCC050
 Misc :
 ALS Vial : 4 Sample Multiplier: 1

Instrument :
 ECD_L
 ClientSampleId :
 PSTDCCC050

Integration File signal 1: autoint1.e
 Integration File signal 2: autoint2.e
 Quant Time: Apr 02 00:54:24 2020
 Quant Method : Z:\pestpcbsrv\HPCHEM1\ECD_L\methods\PL031420.M
 Quant Title : GC Extractables
 QLast Update : Mon Mar 16 09:40:37 2020
 Response via : Initial Calibration
 Integrator: ChemStation

Volume Inj. : 1 µl
 Signal #1 Phase : ZB-MR2 Signal #2 Phase: ZB-MR1
 Signal #1 Info : 30M x 0.32mm x0.2 Signal #2 Info : 30M x 0.32mm x0.5µm

	Compound	RT#1	RT#2	Resp#1	Resp#2	ng/ml	ng/ml

System Monitoring Compounds							
1)	SA Tetrachlo...	3.458	3.956	485.3E6	98378560	52.355	45.345
28)	SA Decachlor...	8.207	8.979	457.3E6	90470546	43.217	40.801
Target Compounds							
2)	A alpha-BHC	3.895	4.344	844.7E6	153.7E6	53.028	47.836
3)	MA gamma-BHC...	4.179	4.627	779.8E6	152.3E6	54.258	48.547
4)	MA Heptachlor	4.479	5.128	796.2E6	159.7E6	53.606	50.745
5)	MB Aldrin	4.727	5.430	738.7E6	154.6E6	53.550	50.673
6)	B beta-BHC	4.431	4.800	312.3E6	70096441	53.119	48.599
7)	B delta-BHC	4.634	5.013	763.7E6	133.1E6	54.412	51.182
8)	B Heptachlo...	5.170	5.815	669.2E6	144.6E6	52.215	53.011
9)	A Endosulfan I	5.508	6.169	610.1E6	140.5E6	51.312	49.387
10)	B gamma-Chl...	5.397	6.048	672.4E6	154.9E6	51.565	50.255
11)	B alpha-Chl...	5.455	6.120	660.2E6	154.9E6	51.091	49.778
12)	B 4,4'-DDE	5.618	6.279	650.3E6	139.9E6	52.211	49.215
13)	MA Dieldrin	5.751	6.425	647.0E6	144.3E6	51.296	48.798
14)	MA Endrin	6.008	6.641	565.7E6	114.8E6	49.483	47.560
15)	B Endosulfa...	6.281	6.852	524.0E6	116.6E6	48.246	44.400
16)	A 4,4'-DDD	6.135	6.768	503.5E6	106.2E6	51.376	46.513
17)	MA 4,4'-DDT	6.374	7.064	495.2E6	99505797	49.651	43.688
18)	B Endrin al...	6.450	6.976	451.6E6	99718653	48.897	44.856
19)	B Endosulfa...	6.663	7.198	472.1E6	106.2E6	47.011	43.522
20)	A Methoxychlor	6.920	7.524	256.1E6	55167788	47.724	42.418
21)	B Endrin ke...	7.153	7.666	550.8E6	109.6E6	48.728	42.351
22)	Mirex	7.340	8.116	364.0E6	80538026	44.942	42.177

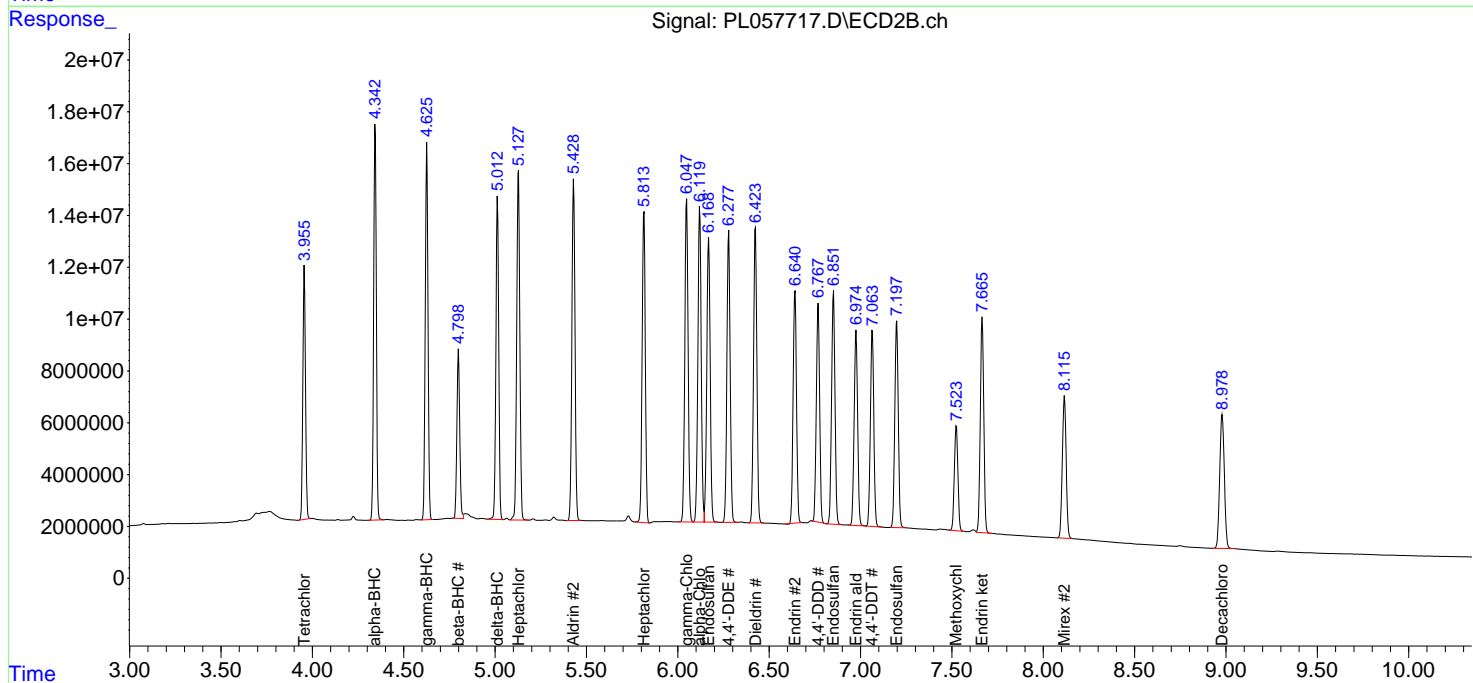
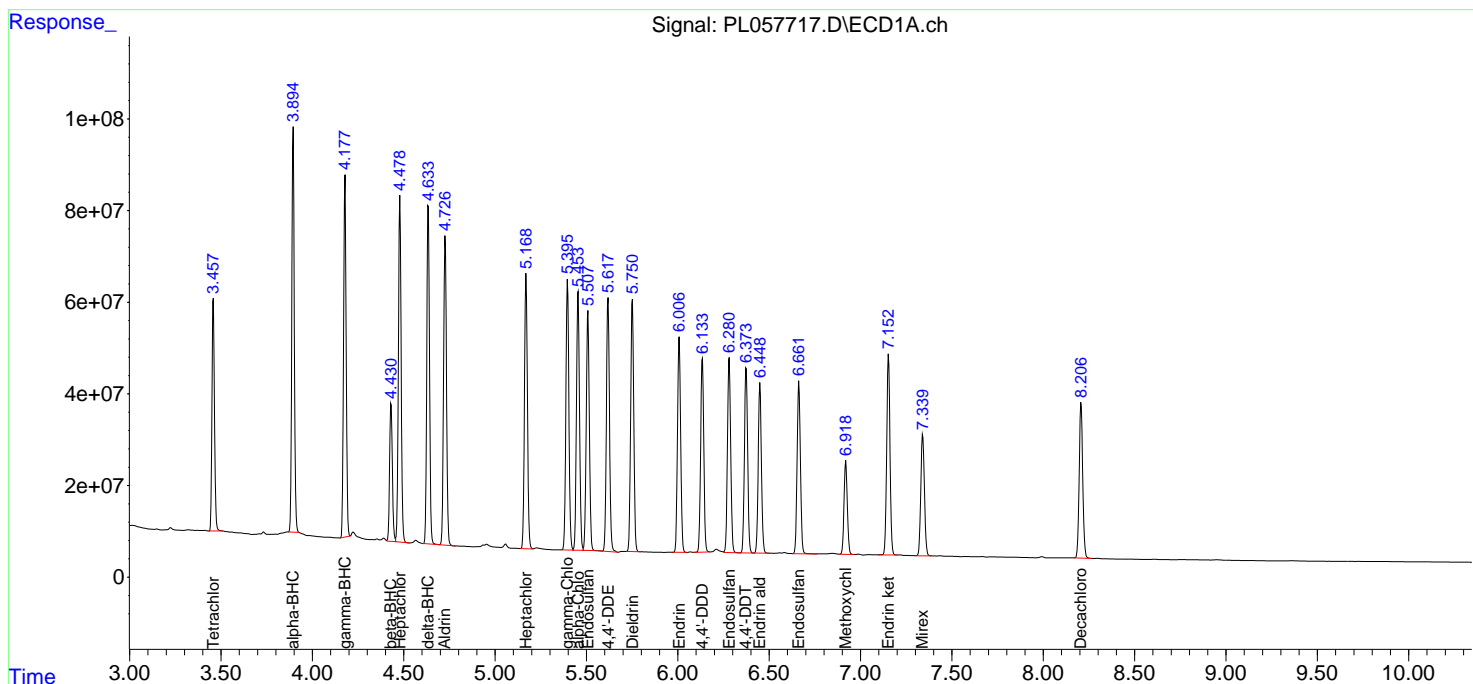
(f)=RT Delta > 1/2 Window (#)=Amounts differ by > 25% (m)=manual int.

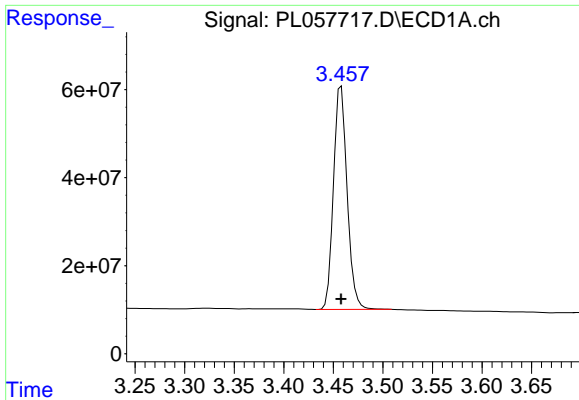
Data Path : Z:\pestpcbsrv\HPCHEM1\ECD_L\Data\PL040120\
 Data File : PL057717.D
 Signal(s) : Signal #1: ECD1A.ch Signal #2: ECD2B.ch
 Acq On : 01 Apr 2020 12:46
 Operator : AJ\MA
 Sample : PSTDCCC050
 Misc :
 ALS Vial : 4 Sample Multiplier: 1

Instrument :
 ECD_L
 ClientSampled :
 PSTDCCC050

Integration File signal 1: autoint1.e
 Integration File signal 2: autoint2.e
 Quant Time: Apr 02 00:54:24 2020
 Quant Method : Z:\pestpcbsrv\HPCHEM1\ECD_L\methods\PL031420.M
 Quant Title : GC Extractables
 QLast Update : Mon Mar 16 09:40:37 2020
 Response via : Initial Calibration
 Integrator: ChemStation

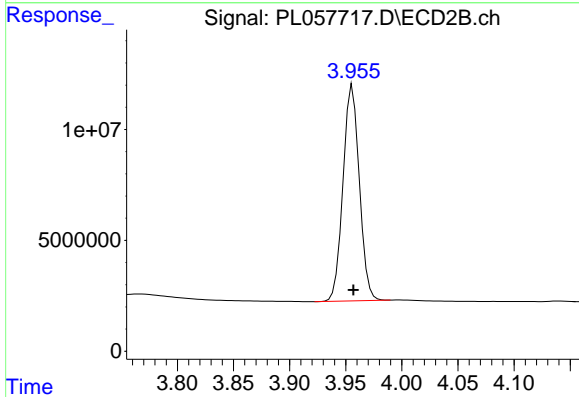
Volume Inj. : 1 µl
 Signal #1 Phase : ZB-MR2 Signal #2 Phase: ZB-MR1
 Signal #1 Info : 30M x 0.32mm x0.2 Signal #2 Info : 30M x 0.32mm x0.5µm



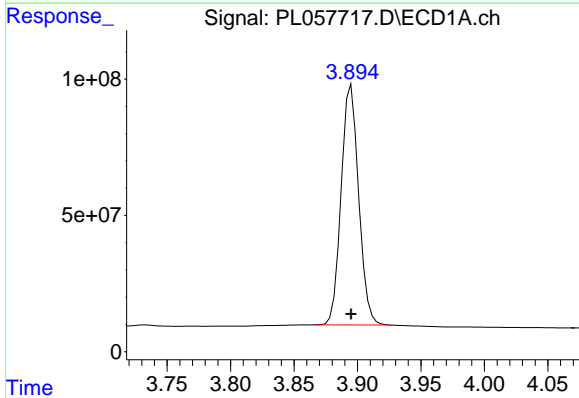


#1 Tetrachloro-m-xylene
 R.T.: 3.458 min
 Delta R.T.: 0.000 min
 Response: 485299747
 Conc: 52.35 ng/ml

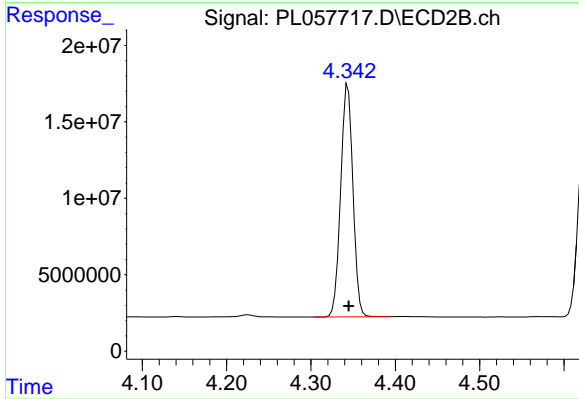
Instrument :
 ECD_L
 ClientSampleId :
 PSTDCCC050



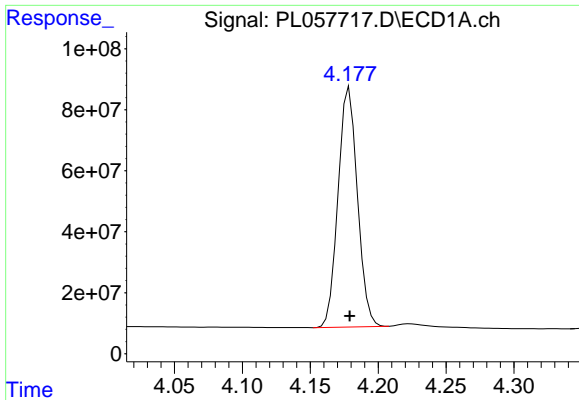
#1 Tetrachloro-m-xylene
 R.T.: 3.956 min
 Delta R.T.: 0.000 min
 Response: 98378560
 Conc: 45.35 ng/ml



#2 alpha-BHC
 R.T.: 3.895 min
 Delta R.T.: 0.000 min
 Response: 844710983
 Conc: 53.03 ng/ml

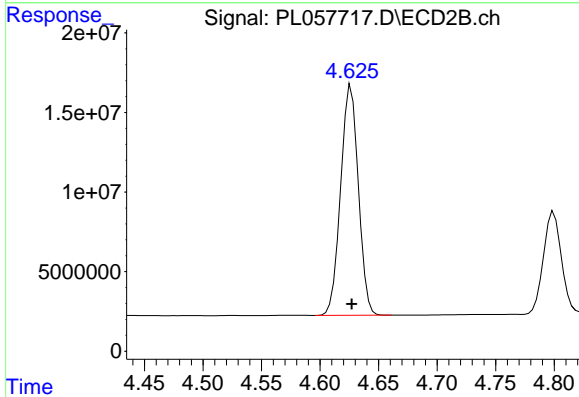


#2 alpha-BHC
 R.T.: 4.344 min
 Delta R.T.: -0.001 min
 Response: 153650882
 Conc: 47.84 ng/ml

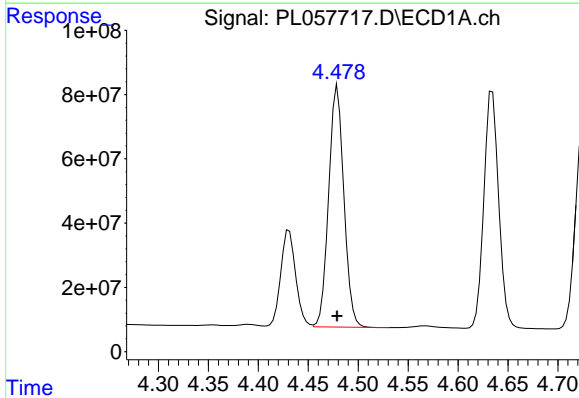


#3 gamma-BHC (Lindane)
 R.T.: 4.179 min
 Delta R.T.: 0.000 min
 Response: 779834714
 Conc: 54.26 ng/ml

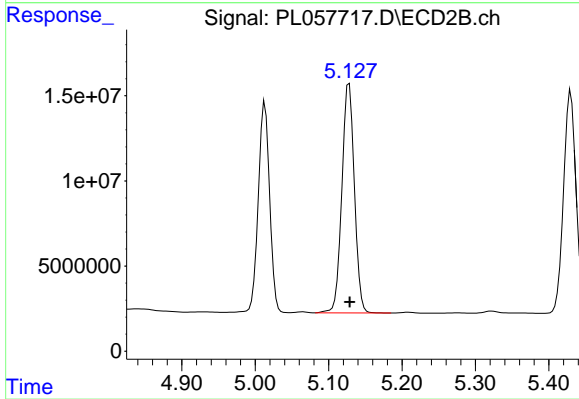
Instrument :
 ECD_L
 ClientSampleId :
 PSTDCCC050



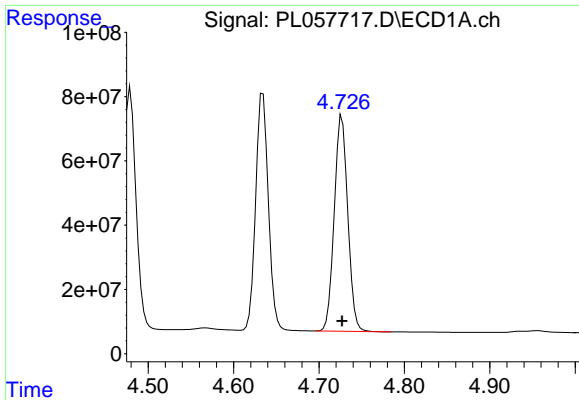
#3 gamma-BHC (Lindane)
 R.T.: 4.627 min
 Delta R.T.: 0.000 min
 Response: 152312286
 Conc: 48.55 ng/ml



#4 Heptachlor
 R.T.: 4.479 min
 Delta R.T.: 0.000 min
 Response: 796168566
 Conc: 53.61 ng/ml

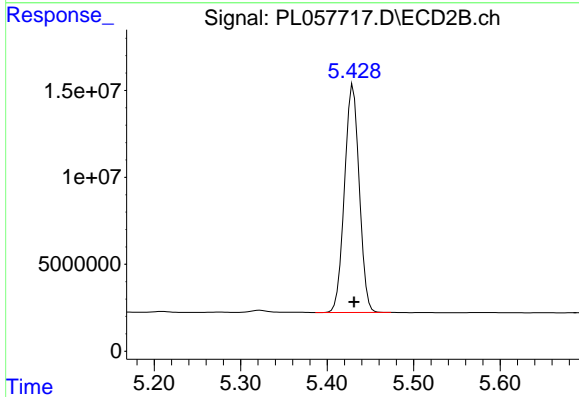


#4 Heptachlor
 R.T.: 5.128 min
 Delta R.T.: -0.001 min
 Response: 159729806
 Conc: 50.74 ng/ml

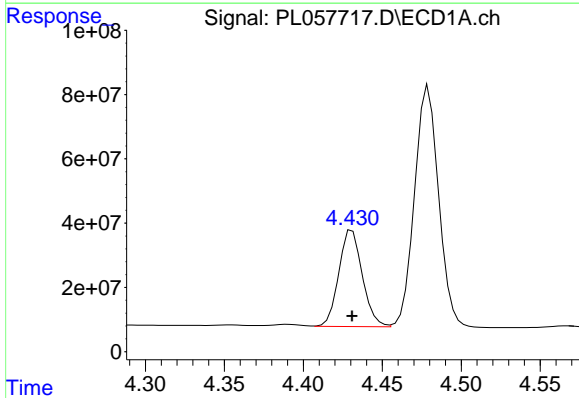


#5 Aldrin
 R.T.: 4.727 min
 Delta R.T.: 0.000 min
 Response: 738688363
 Conc: 53.55 ng/ml

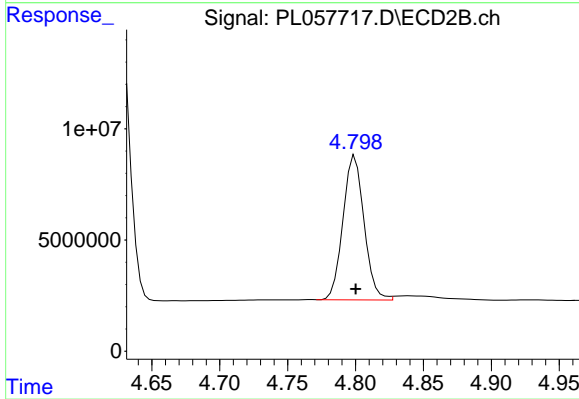
Instrument :
 ECD_L
ClientSampleId :
 PSTDCCC050



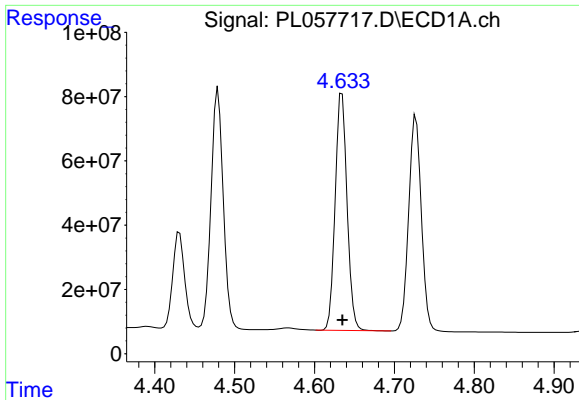
#5 Aldrin
 R.T.: 5.430 min
 Delta R.T.: -0.001 min
 Response: 154590690
 Conc: 50.67 ng/ml



#6 beta-BHC
 R.T.: 4.431 min
 Delta R.T.: 0.000 min
 Response: 312292512
 Conc: 53.12 ng/ml

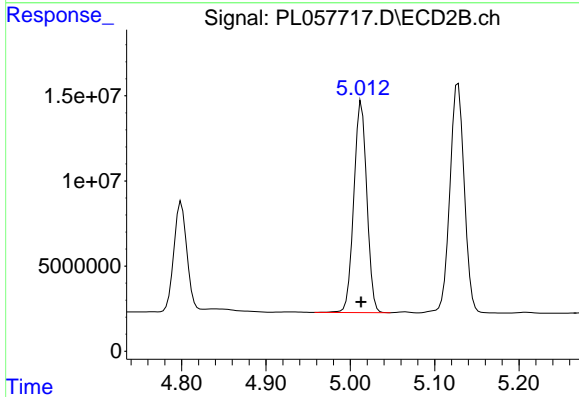


#6 beta-BHC
 R.T.: 4.800 min
 Delta R.T.: 0.000 min
 Response: 70096441
 Conc: 48.60 ng/ml

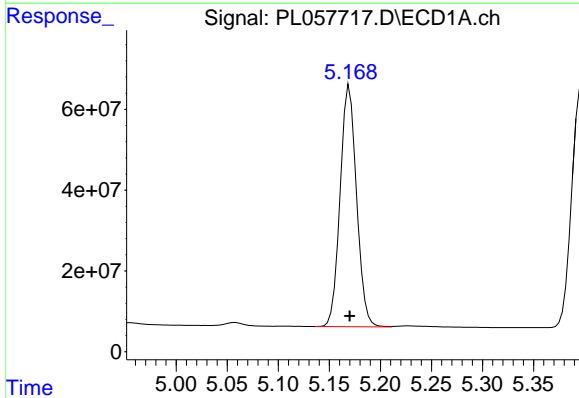


#7 delta-BHC
 R.T.: 4.634 min
 Delta R.T.: 0.000 min
 Response: 763679017
 Conc: 54.41 ng/ml

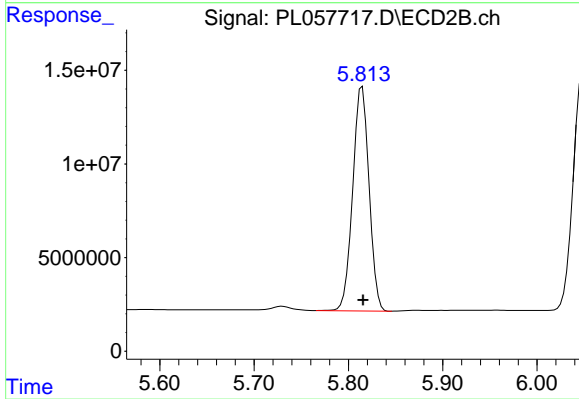
Instrument :
 ECD_L
 ClientSampleId :
 PSTDCCC050



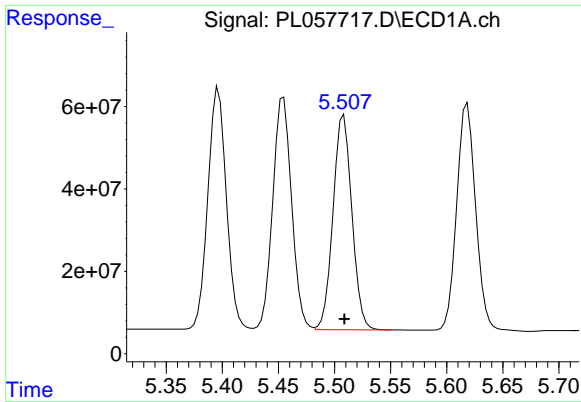
#7 delta-BHC
 R.T.: 5.013 min
 Delta R.T.: 0.000 min
 Response: 133075468
 Conc: 51.18 ng/ml



#8 Heptachlor epoxide
 R.T.: 5.170 min
 Delta R.T.: 0.000 min
 Response: 669180921
 Conc: 52.22 ng/ml



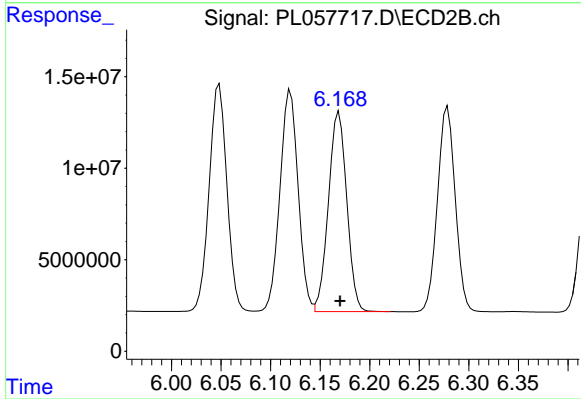
#8 Heptachlor epoxide
 R.T.: 5.815 min
 Delta R.T.: 0.000 min
 Response: 144647816
 Conc: 53.01 ng/ml



#9 Endosulfan I

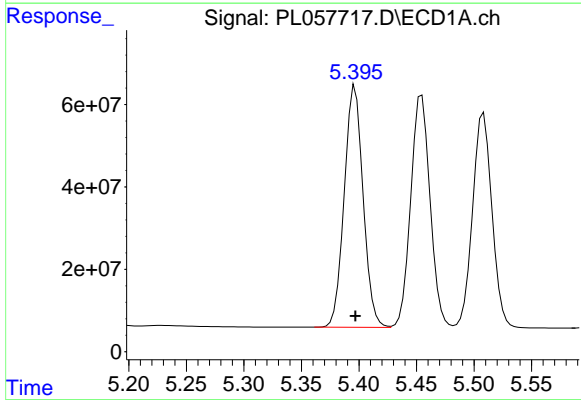
R.T.: 5.508 min
 Delta R.T.: 0.000 min
 Response: 610095197
 Conc: 51.31 ng/ml

Instrument :
 ECD_L
 ClientSampleId :
 PSTDCCC050



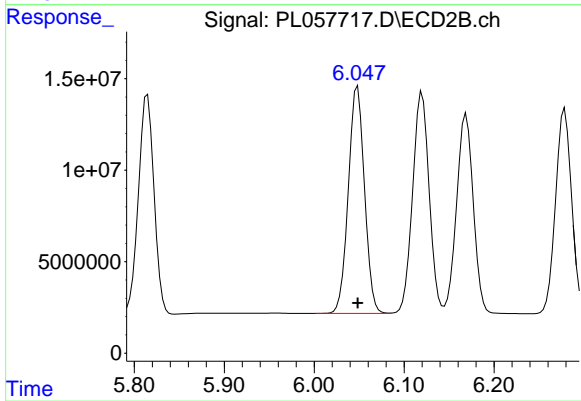
#9 Endosulfan I

R.T.: 6.169 min
 Delta R.T.: -0.001 min
 Response: 140521888
 Conc: 49.39 ng/ml



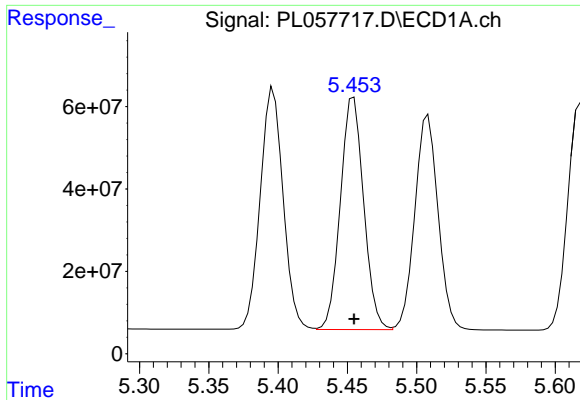
#10 gamma-Chlordane

R.T.: 5.397 min
 Delta R.T.: 0.000 min
 Response: 672415222
 Conc: 51.56 ng/ml



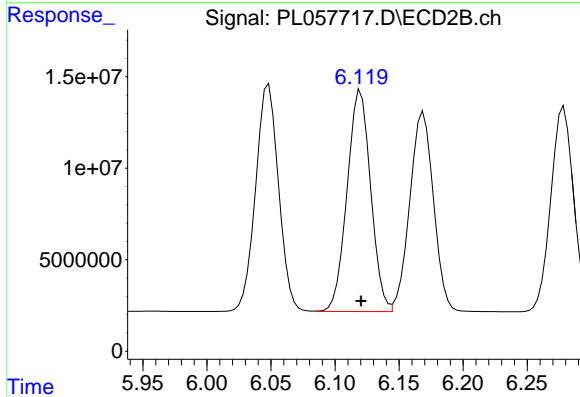
#10 gamma-Chlordane

R.T.: 6.048 min
 Delta R.T.: 0.000 min
 Response: 154892642
 Conc: 50.26 ng/ml

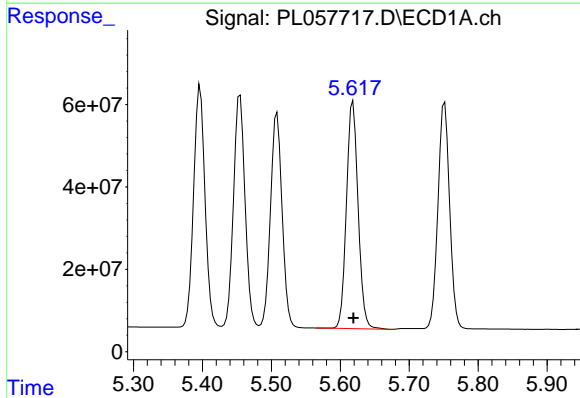


#11 alpha-Chlordane
 R.T.: 5.455 min
 Delta R.T.: 0.000 min
 Response: 660237643
 Conc: 51.09 ng/ml

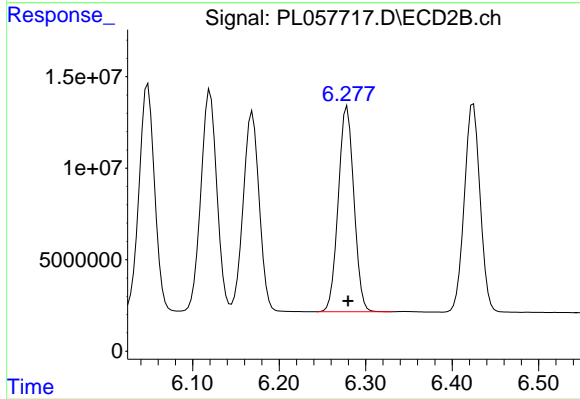
Instrument :
 ECD_L
 ClientSampleId :
 PSTDCCC050



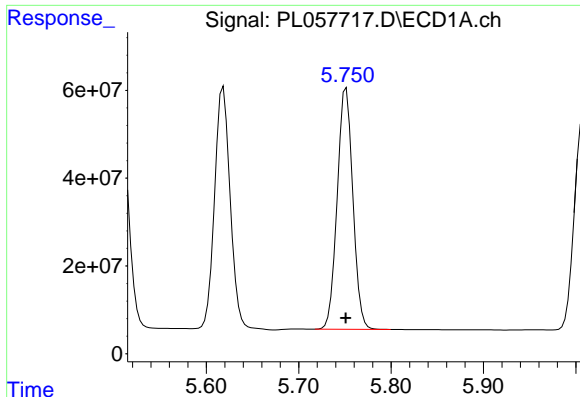
#11 alpha-Chlordane
 R.T.: 6.120 min
 Delta R.T.: 0.000 min
 Response: 154941994
 Conc: 49.78 ng/ml



#12 4,4'-DDE
 R.T.: 5.618 min
 Delta R.T.: 0.000 min
 Response: 650320156
 Conc: 52.21 ng/ml



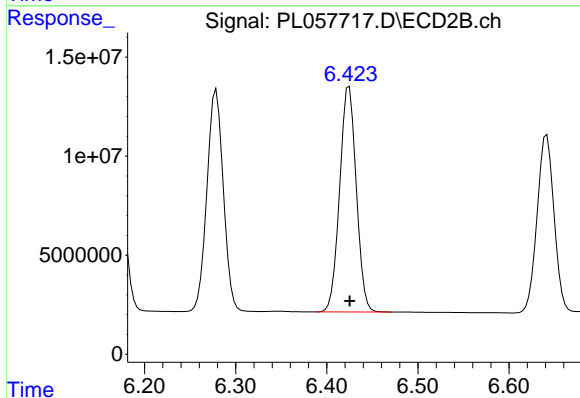
#12 4,4'-DDE
 R.T.: 6.279 min
 Delta R.T.: 0.000 min
 Response: 139891351
 Conc: 49.22 ng/ml



#13 Dieldrin

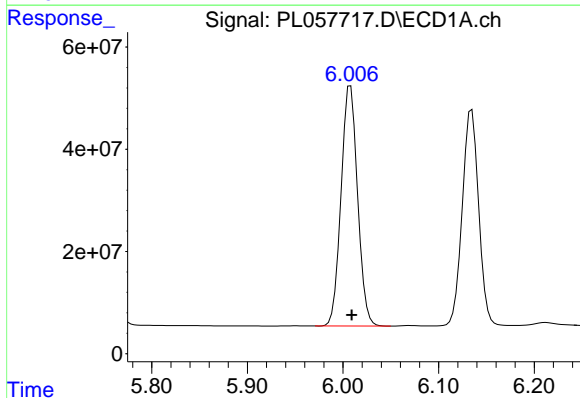
R.T.: 5.751 min
 Delta R.T.: 0.000 min
 Response: 646979888
 Conc: 51.30 ng/ml

Instrument :
 ECD_L
 ClientSampleId :
 PSTDCCC050



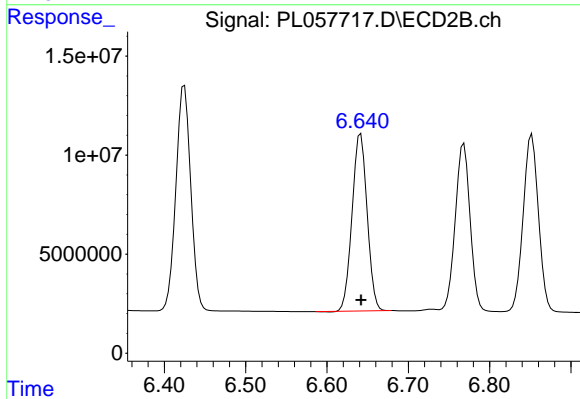
#13 Dieldrin

R.T.: 6.425 min
 Delta R.T.: 0.000 min
 Response: 144343279
 Conc: 48.80 ng/ml



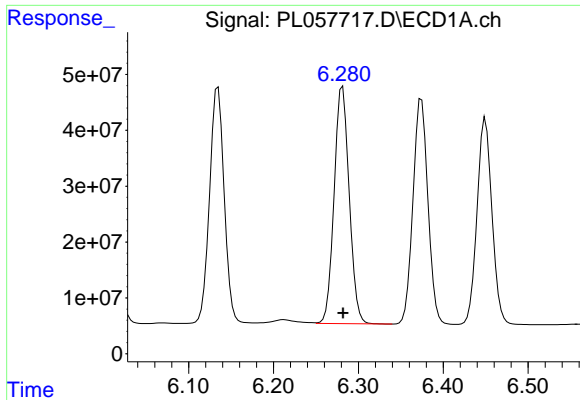
#14 Endrin

R.T.: 6.008 min
 Delta R.T.: -0.001 min
 Response: 565656142
 Conc: 49.48 ng/ml



#14 Endrin

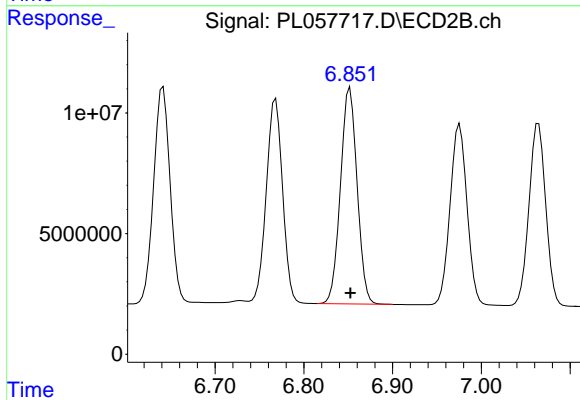
R.T.: 6.641 min
 Delta R.T.: 0.000 min
 Response: 114751608
 Conc: 47.56 ng/ml



#15 Endosulfan II

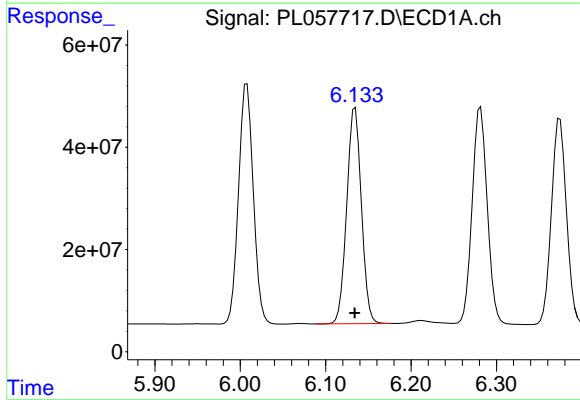
R.T.: 6.281 min
Delta R.T.: 0.000 min
Response: 523997575
Conc: 48.25 ng/ml

Instrument :
ECD_L
ClientSampleId :
PSTDCCC050



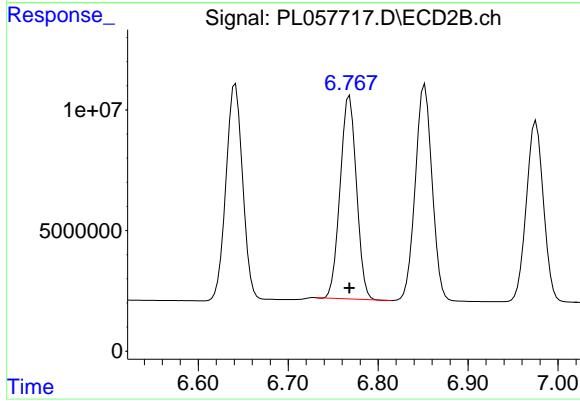
#15 Endosulfan II

R.T.: 6.852 min
Delta R.T.: 0.000 min
Response: 116632537
Conc: 44.40 ng/ml



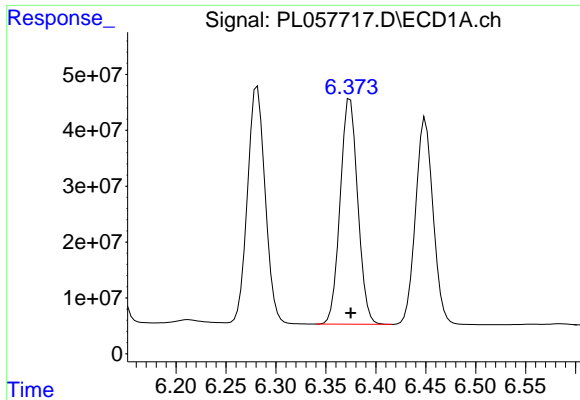
#16 4,4'-DDD

R.T.: 6.135 min
Delta R.T.: 0.000 min
Response: 503549330
Conc: 51.38 ng/ml



#16 4,4'-DDD

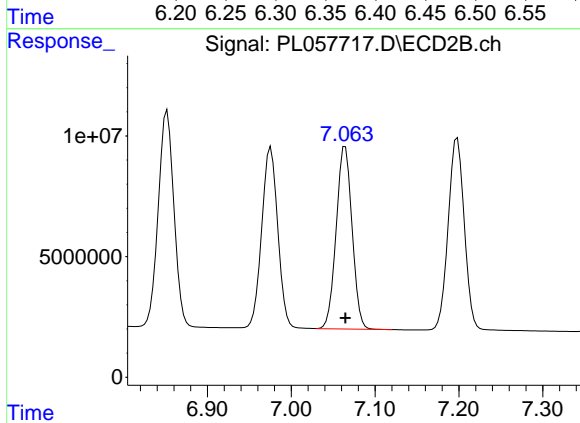
R.T.: 6.768 min
Delta R.T.: 0.000 min
Response: 106224137
Conc: 46.51 ng/ml



#17 4,4'-DDT

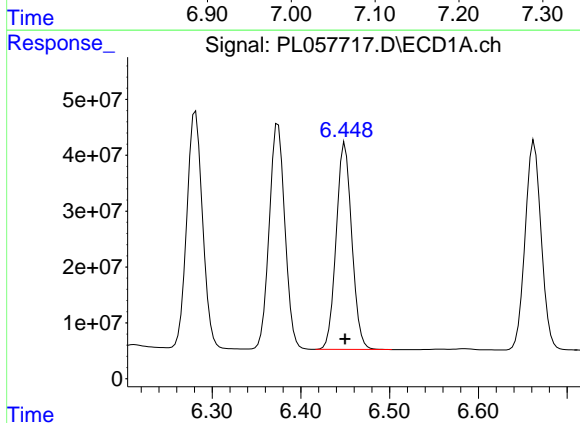
R.T.: 6.374 min
 Delta R.T.: 0.000 min
 Response: 495157024
 Conc: 49.65 ng/ml

Instrument :
 ECD_L
 ClientSampleId :
 PSTDCCC050



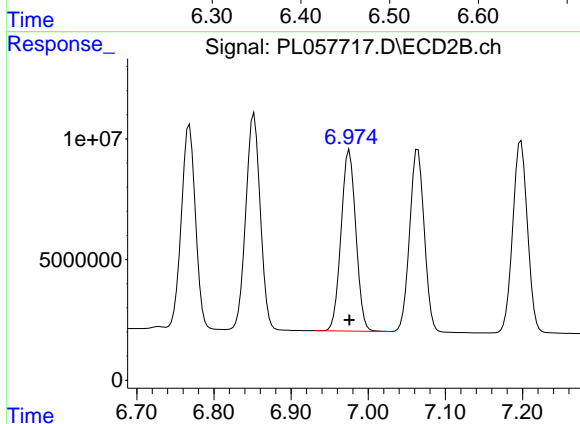
#17 4,4'-DDT

R.T.: 7.064 min
 Delta R.T.: 0.000 min
 Response: 99505797
 Conc: 43.69 ng/ml



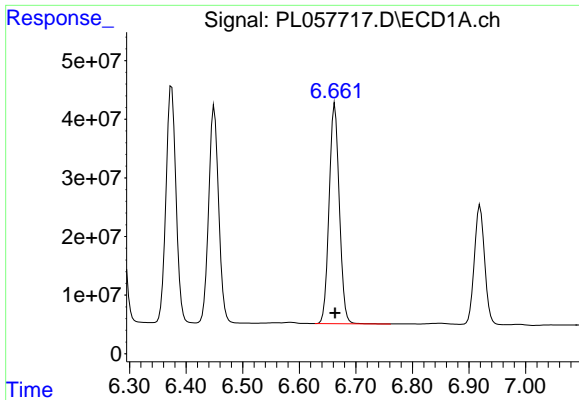
#18 Endrin aldehyde

R.T.: 6.450 min
 Delta R.T.: 0.000 min
 Response: 451574540
 Conc: 48.90 ng/ml



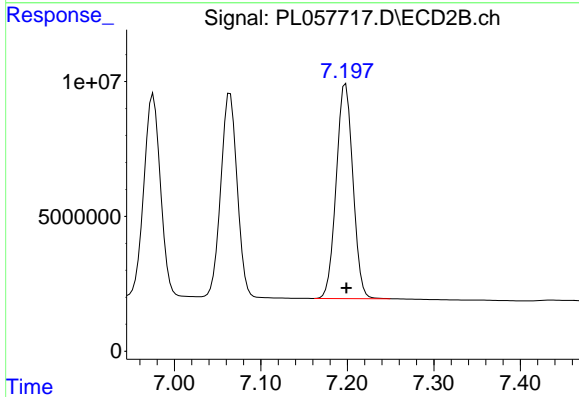
#18 Endrin aldehyde

R.T.: 6.976 min
 Delta R.T.: 0.000 min
 Response: 99718653
 Conc: 44.86 ng/ml

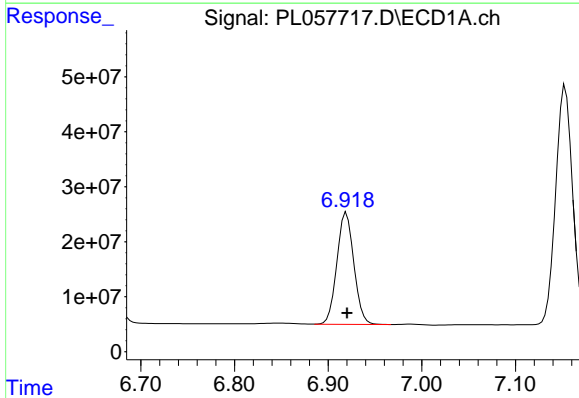


#19 Endosulfan Sulfate
 R.T.: 6.663 min
 Delta R.T.: 0.000 min
 Response: 472107818
 Conc: 47.01 ng/ml

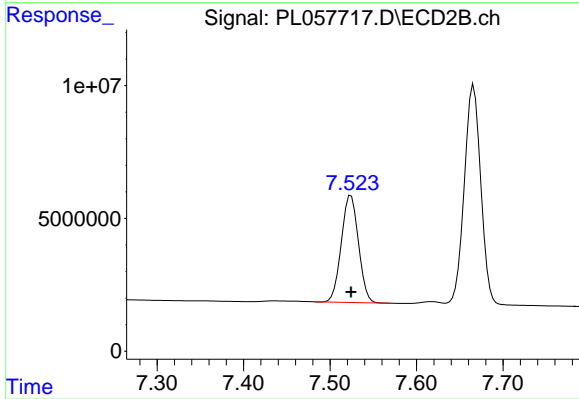
Instrument :
 ECD_L
 ClientSampleId :
 PSTDCCC050



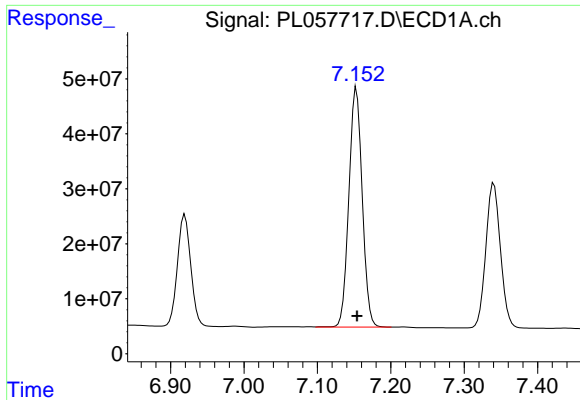
#19 Endosulfan Sulfate
 R.T.: 7.198 min
 Delta R.T.: 0.000 min
 Response: 106153345
 Conc: 43.52 ng/ml



#20 Methoxychlor
 R.T.: 6.920 min
 Delta R.T.: 0.000 min
 Response: 256081043
 Conc: 47.72 ng/ml

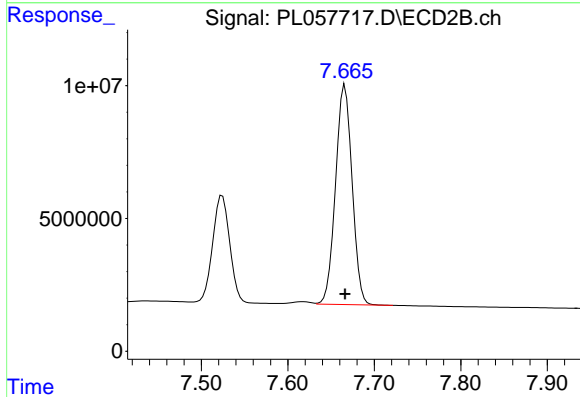


#20 Methoxychlor
 R.T.: 7.524 min
 Delta R.T.: 0.000 min
 Response: 55167788
 Conc: 42.42 ng/ml

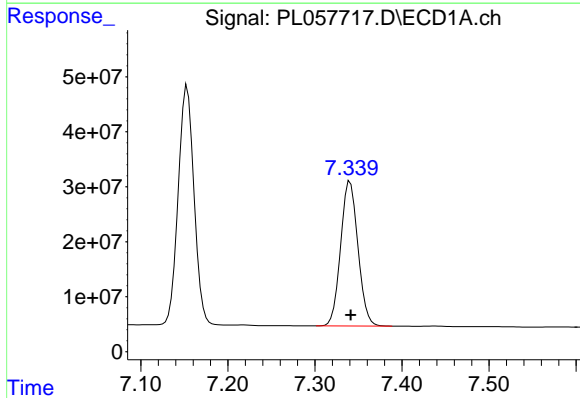


#21 Endrin ketone
 R.T.: 7.153 min
 Delta R.T.: 0.000 min
 Response: 550756964
 Conc: 48.73 ng/ml

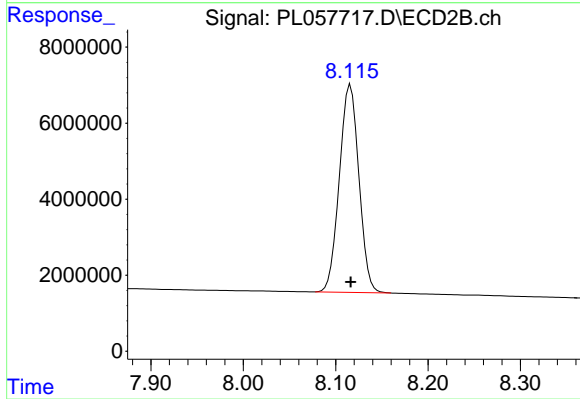
Instrument :
 ECD_L
 ClientSampleId :
 PSTDCCC050



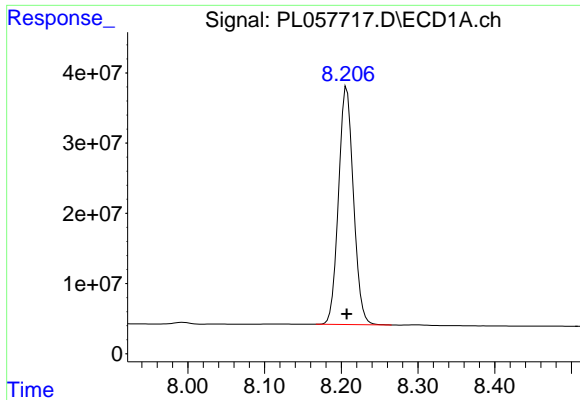
#21 Endrin ketone
 R.T.: 7.666 min
 Delta R.T.: 0.000 min
 Response: 109630890
 Conc: 42.35 ng/ml



#22 Mirex
 R.T.: 7.340 min
 Delta R.T.: 0.000 min
 Response: 363996719
 Conc: 44.94 ng/ml



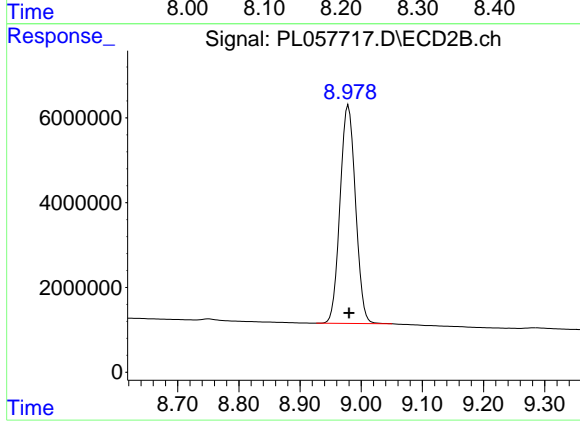
#22 Mirex
 R.T.: 8.116 min
 Delta R.T.: 0.000 min
 Response: 80538026
 Conc: 42.18 ng/ml



#28 Decachlorobiphenyl

R.T.: 8.207 min
Delta R.T.: 0.000 min
Response: 457288611
Conc: 43.22 ng/ml

Instrument :
ECD_L
ClientSampleId :
PSTDCCC050



#28 Decachlorobiphenyl

R.T.: 8.979 min
Delta R.T.: -0.001 min
Response: 90470546
Conc: 40.80 ng/ml