

Data Path : Z:\pestpcbsrv\HPCHEM1\ECD_L\Data\PL040121\
 Data File : PL065766.D
 Signal(s) : Signal #1: ECD1A.ch Signal #2: ECD2B.ch
 Acq On : 01 Apr 2021 11:35
 Operator : AR\AJ
 Sample : I.BLK
 Misc :
 ALS Vial : 2 Sample Multiplier: 1

Instrument :
 ECD_L
 ClientSampleId :
 I.BLK

Integration File signal 1: autoint1.e
 Integration File signal 2: autoint2.e
 Quant Time: Apr 02 02:07:15 2021
 Quant Method : Z:\pestpcbsrv\HPCHEM1\ECD_L\methods\PL033121.M
 Quant Title : GC Extractables
 QLast Update : Wed Mar 31 15:57:28 2021
 Response via : Initial Calibration
 Integrator: ChemStation

Volume Inj. : 1 µl
 Signal #1 Phase : ZB-MR2 Signal #2 Phase: ZB-MR1
 Signal #1 Info : 30M x 0.32mm x0.2 Signal #2 Info : 30M x 0.32mm x0.5µm

	Compound	RT#1	RT#2	Resp#1	Resp#2	ng/ml	ng/ml

System Monitoring Compounds							
1)	SA Tetrachlo...	3.278	3.781	61626298	62287512	23.657	22.692
28)	SA Decachlor...	7.913	8.729	60561724	55896546	26.149	24.793
Target Compounds							
4)	MA Heptachlor	4.233f	0.000	1096878	0	0.304	N.D. #
6)	B beta-BHC	4.233	4.627	1096878	2380287	0.688	1.367 #
8)	B Heptachlo...	4.932	5.616	644104	13663175	0.205	4.400 #
9)	A Endosulfan I	0.000	5.962	0	2348302	N.D.	0.855 #
10)	B gamma-Chl...	0.000	5.834	0	312186	N.D.	0.104 #
14)	MA Endrin	5.759f	0.000	2286411	0	0.847	N.D. #
16)	A 4,4'-DDD	5.860f	0.000	1416097	0	0.624	N.D. #
17)	MA 4,4'-DDT	6.115	6.877f	4564739	219593	2.167	0.098 #
18)	B Endrin al...	6.177	0.000	1124512	0	0.594	N.D. #
19)	B Endosulfa...	0.000	7.020f	0	37157	N.D.	0.015 #
20)	A Methoxychlor	6.657	7.345f	617828	3223943	0.492	2.545 #
21)	B Endrin ke...	6.845f	7.447f	1888925	340433	0.689	0.132 #
22)	Mirex	7.038	0.000	742296	0	0.354	N.D. #
23)	Chlordane-1	4.085f	4.727f	3184962	228474	35.299	2.069 #
24)	Chlordane-2	4.598	0.000	32422762	0	282.100	N.D. #
25)	Chlordane-3	0.000	5.834	0	312186	N.D.	0.734 #
27)	Chlordane-5	6.010	6.698	1632822	292452	15.964	3.508 #

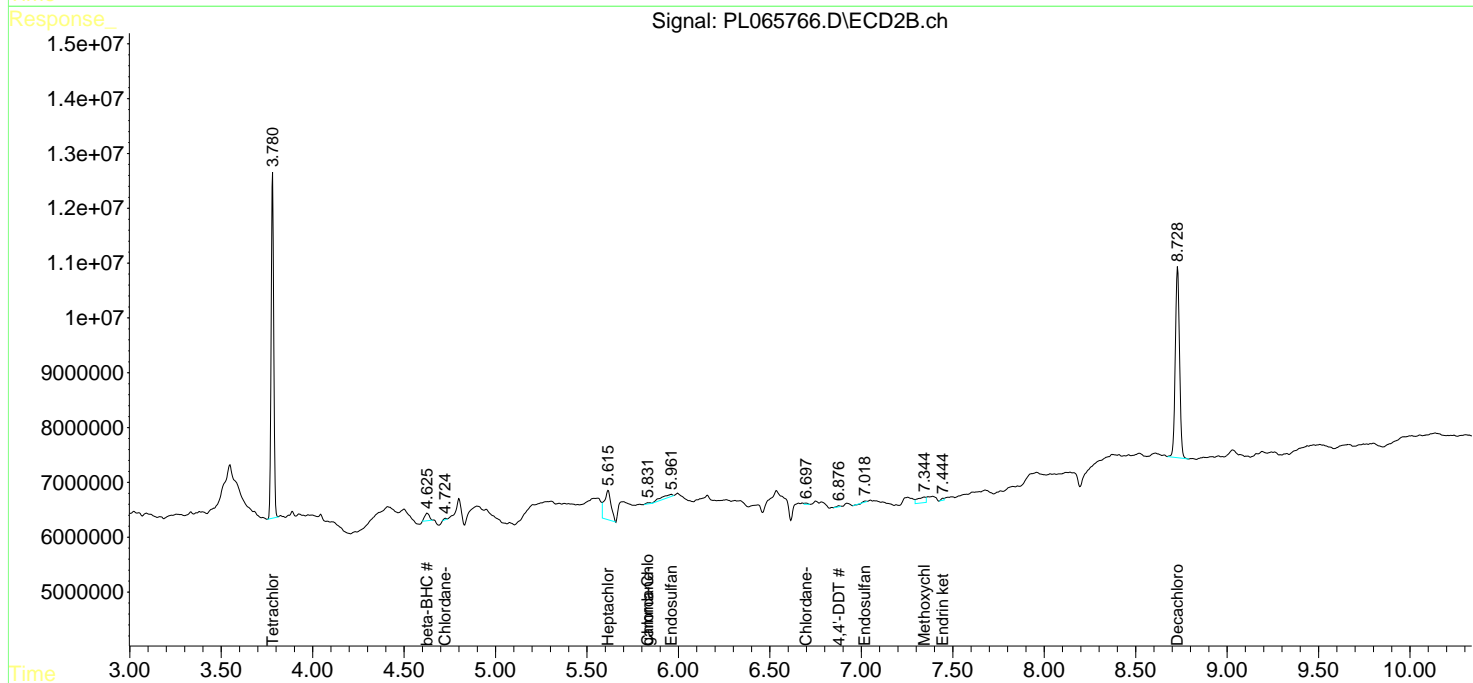
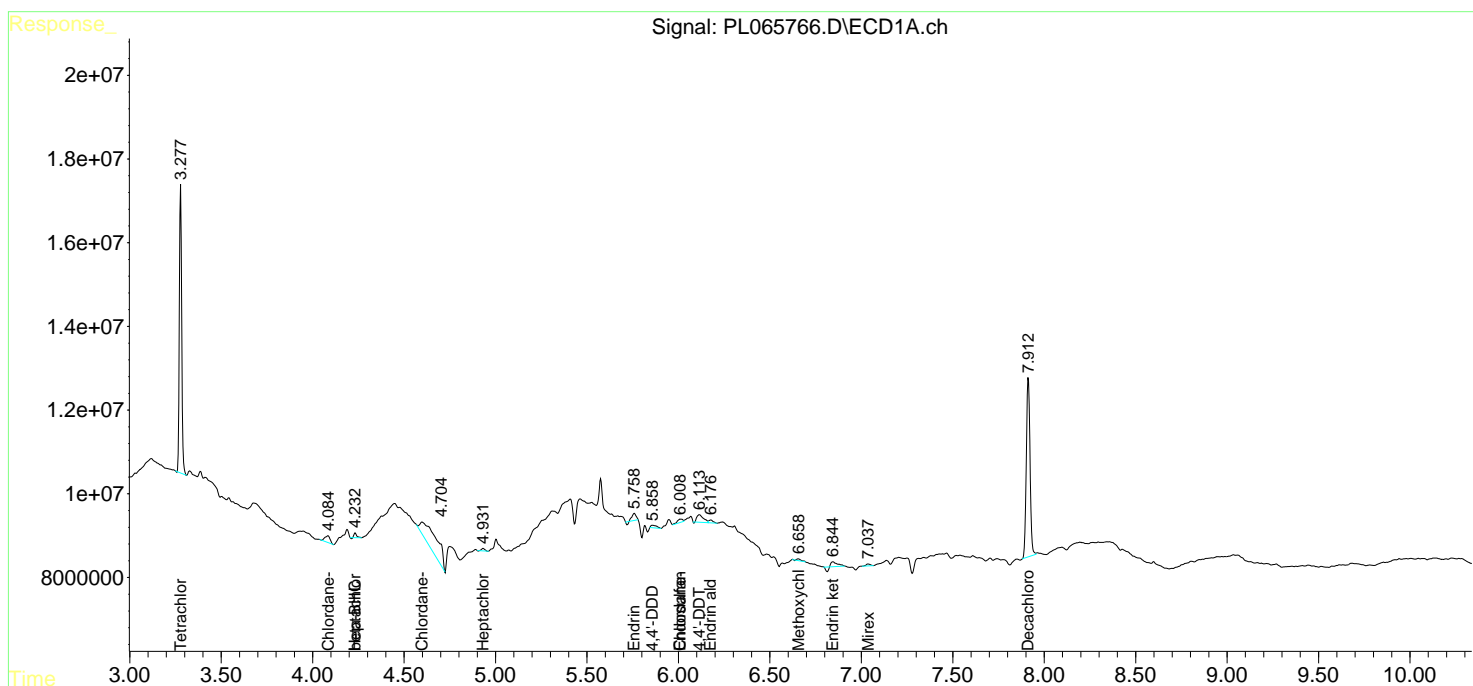
(f)=RT Delta > 1/2 Window (#)=Amounts differ by > 25% (m)=manual int.

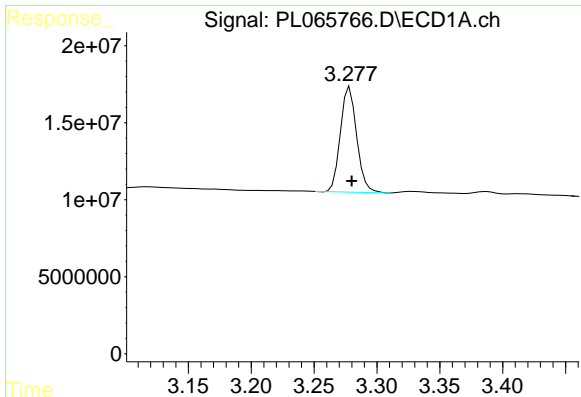
Data Path : Z:\pestpcbsrv\HPCHEM1\ECD_L\Data\PL040121\
 Data File : PL065766.D
 Signal(s) : Signal #1: ECD1A.ch Signal #2: ECD2B.ch
 Acq On : 01 Apr 2021 11:35
 Operator : AR\AJ
 Sample : I.BLK
 Misc :
 ALS Vial : 2 Sample Multiplier: 1

Instrument :
 ECD_L
 ClientSampled :
 I.BLK

Integration File signal 1: autoint1.e
 Integration File signal 2: autoint2.e
 Quant Time: Apr 02 02:07:15 2021
 Quant Method : Z:\pestpcbsrv\HPCHEM1\ECD_L\methods\PL033121.M
 Quant Title : GC Extractables
 QLast Update : Wed Mar 31 15:57:28 2021
 Response via : Initial Calibration
 Integrator: ChemStation

Volume Inj. : 1 µl
 Signal #1 Phase : ZB-MR2 Signal #2 Phase: ZB-MR1
 Signal #1 Info : 30M x 0.32mm x0.2 Signal #2 Info : 30M x 0.32mm x0.5µm

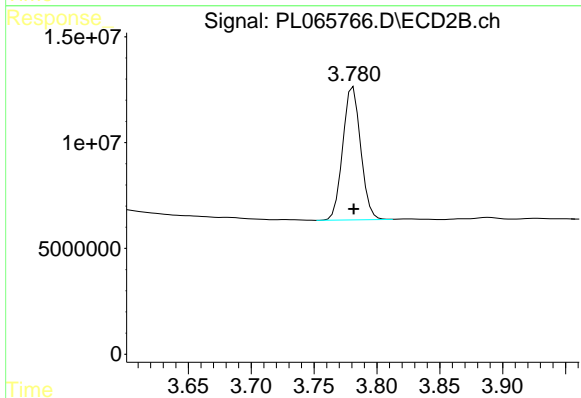




#1 Tetrachloro-m-xylene

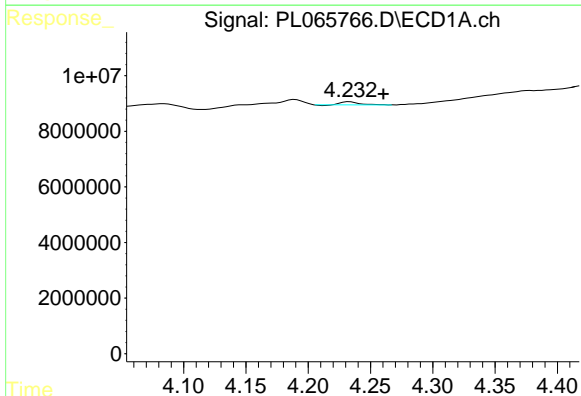
R.T.: 3.278 min
 Delta R.T.: -0.002 min
 Response: 61626298
 Conc: 23.66 ng/ml

Instrument :
 ECD_L
 ClientSampled :
 I.BLK



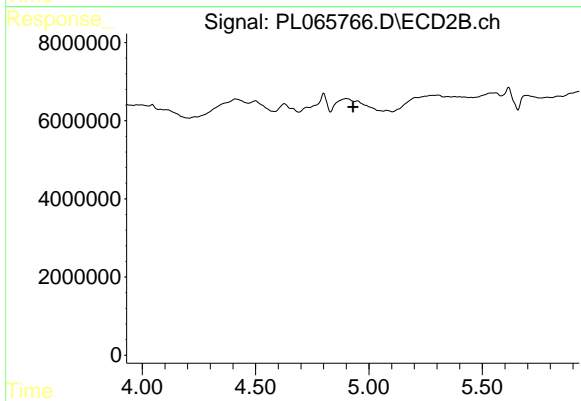
#1 Tetrachloro-m-xylene

R.T.: 3.781 min
 Delta R.T.: 0.000 min
 Response: 62287512
 Conc: 22.69 ng/ml



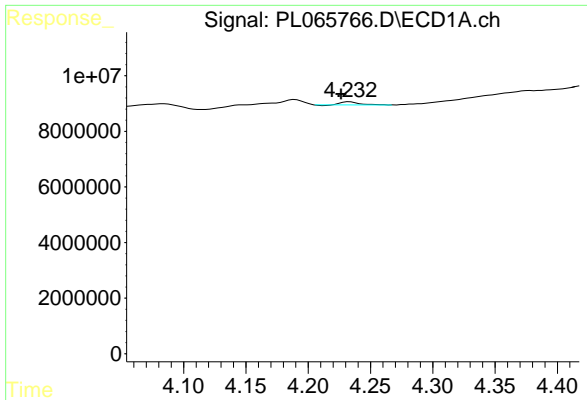
#4 Heptachlor

R.T.: 4.233 min
 Delta R.T.: -0.027 min
 Response: 1096878
 Conc: 0.30 ng/ml



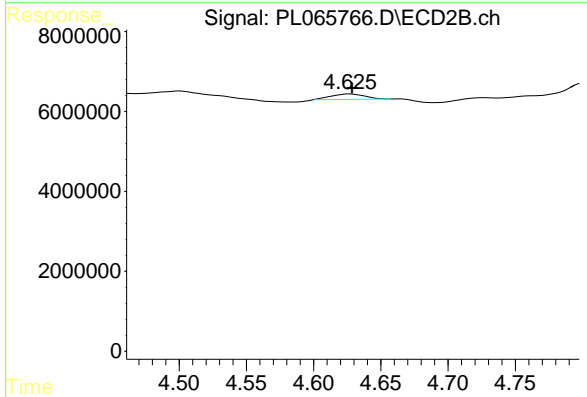
#4 Heptachlor

R.T.: 0.000 min
 Exp R.T.: 4.931 min
 Response: 0
 Conc: N.D.

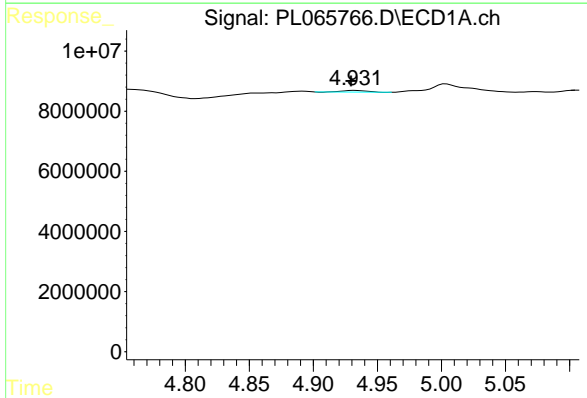


#6 beta-BHC
 R.T.: 4.233 min
 Delta R.T.: 0.007 min
 Response: 1096878
 Conc: 0.69 ng/ml

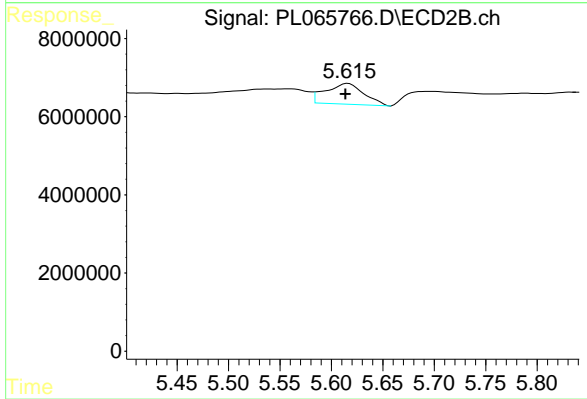
Instrument :
 ECD_L
 ClientSampled :
 I.BLK



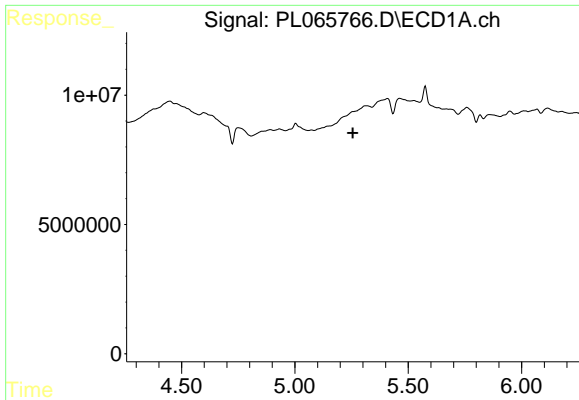
#6 beta-BHC
 R.T.: 4.627 min
 Delta R.T.: -0.002 min
 Response: 2380287
 Conc: 1.37 ng/ml



#8 Heptachlor epoxide
 R.T.: 4.932 min
 Delta R.T.: 0.003 min
 Response: 644104
 Conc: 0.20 ng/ml

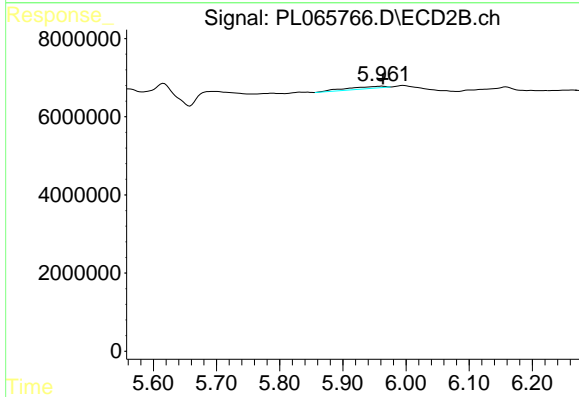


#8 Heptachlor epoxide
 R.T.: 5.616 min
 Delta R.T.: 0.003 min
 Response: 13663175
 Conc: 4.40 ng/ml

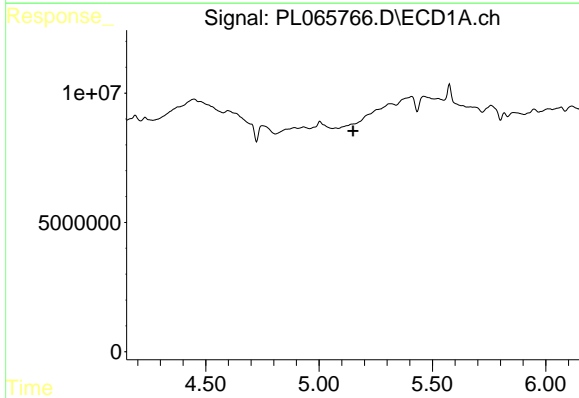


#9 Endosulfan I
 R.T.: 0.000 min
 Exp R.T.: 5.255 min
 Response: 0
 Conc: N.D.

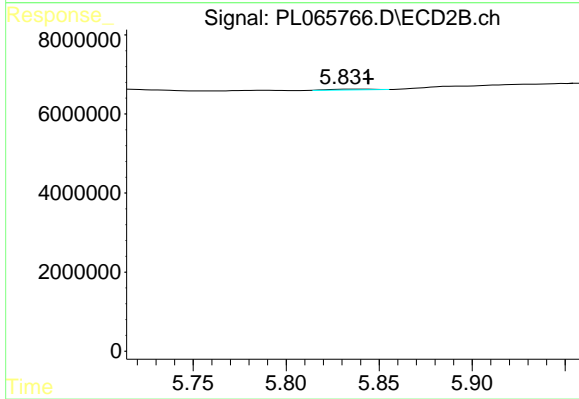
Instrument :
 ECD_L
 ClientSampled :
 I.BLK



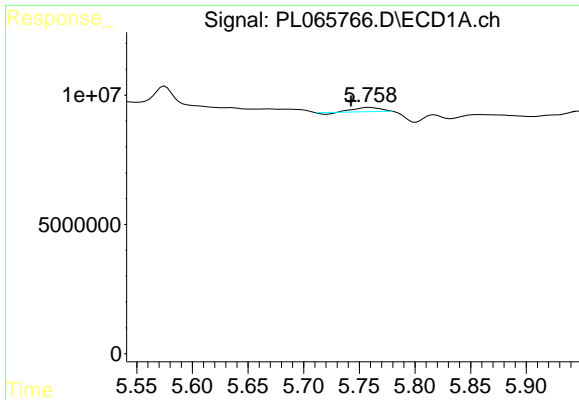
#9 Endosulfan I
 R.T.: 5.962 min
 Delta R.T.: -0.002 min
 Response: 2348302
 Conc: 0.86 ng/ml



#10 gamma-Chlordane
 R.T.: 0.000 min
 Exp R.T.: 5.150 min
 Response: 0
 Conc: N.D.

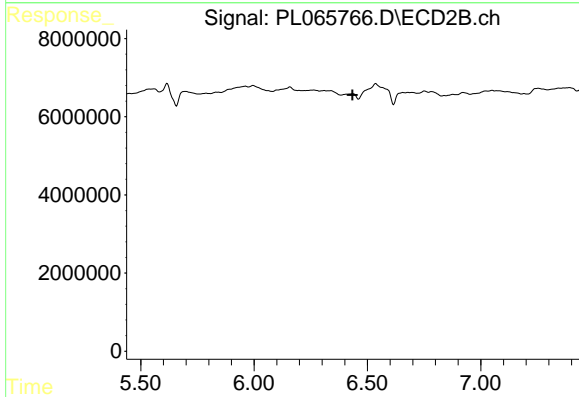


#10 gamma-Chlordane
 R.T.: 5.834 min
 Delta R.T.: -0.011 min
 Response: 312186
 Conc: 0.10 ng/ml

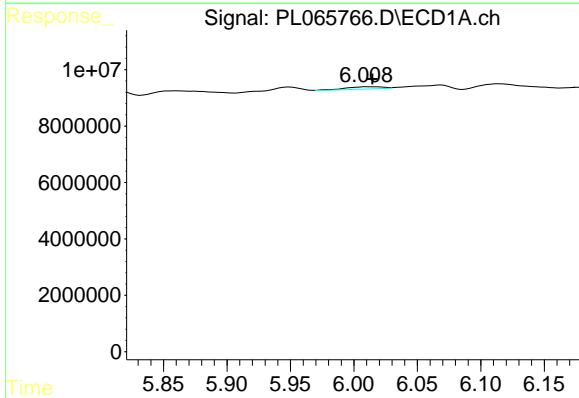


#14 Endrin
 R.T.: 5.759 min
 Delta R.T.: 0.017 min
 Response: 2286411
 Conc: 0.85 ng/ml

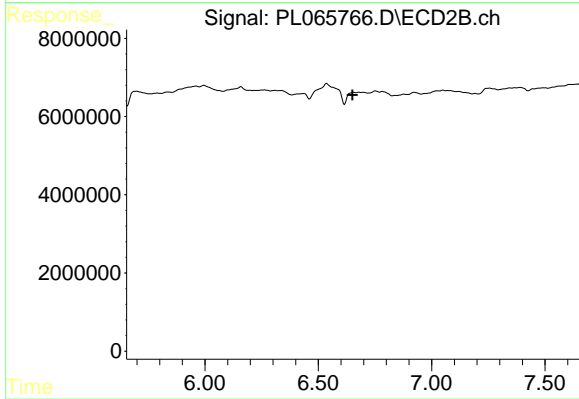
Instrument :
 ECD_L
 ClientSampled :
 I.BLK



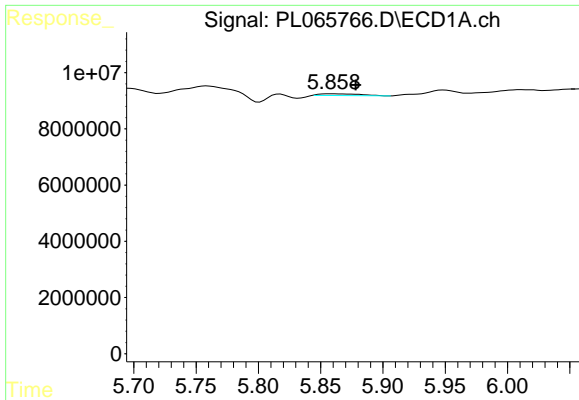
#14 Endrin
 R.T.: 0.000 min
 Exp R.T. : 6.434 min
 Response: 0
 Conc: N.D.



#15 Endosulfan II
 R.T.: 6.010 min
 Delta R.T.: -0.004 min
 Response: 1632822
 Conc: 0.66 ng/ml

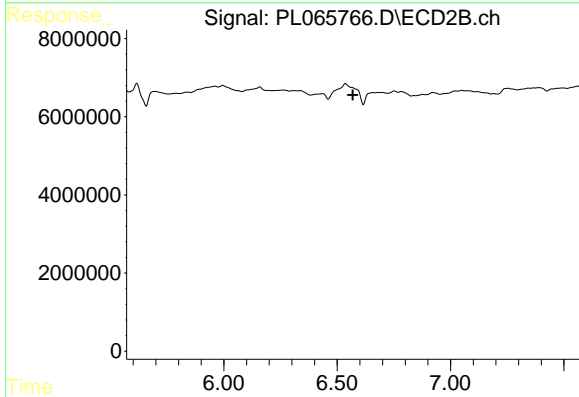


#15 Endosulfan II
 R.T.: 6.657 min
 Delta R.T.: 0.005 min
 Response: -2646173
 Conc: N.D.

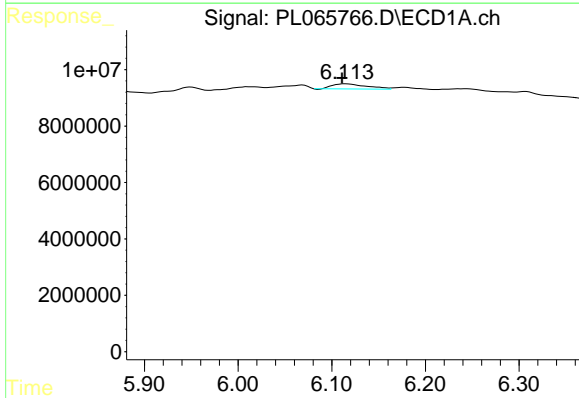


#16 4,4'-DDD
 R.T.: 5.860 min
 Delta R.T.: -0.019 min
 Response: 1416097
 Conc: 0.62 ng/ml

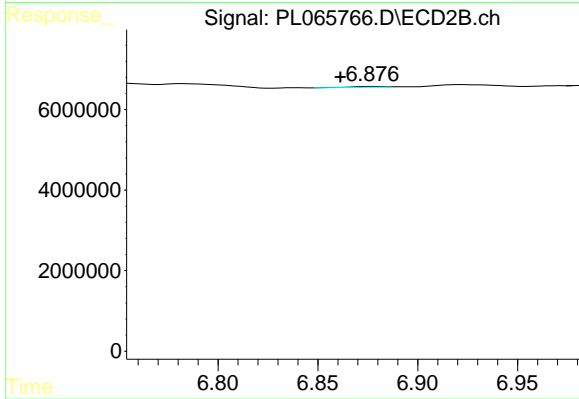
Instrument :
 ECD_L
 ClientSampled :
 I.BLK



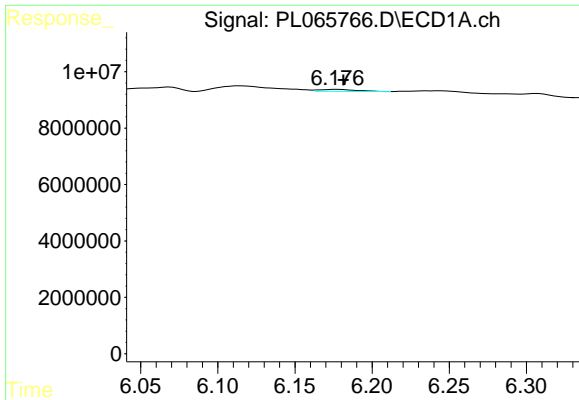
#16 4,4'-DDD
 R.T.: 0.000 min
 Exp R.T. : 6.569 min
 Response: 0
 Conc: N.D.



#17 4,4'-DDT
 R.T.: 6.115 min
 Delta R.T.: 0.004 min
 Response: 4564739
 Conc: 2.17 ng/ml

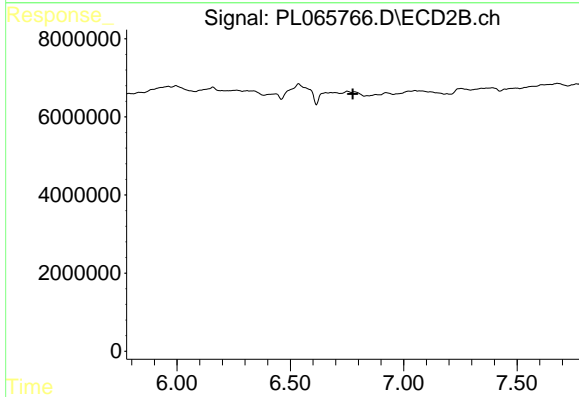


#17 4,4'-DDT
 R.T.: 6.877 min
 Delta R.T.: 0.016 min
 Response: 219593
 Conc: 0.10 ng/ml

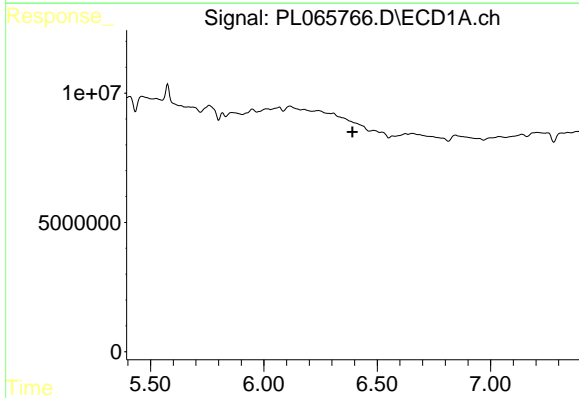


#18 Endrin aldehyde
 R.T.: 6.177 min
 Delta R.T.: -0.004 min
 Response: 1124512
 Conc: 0.59 ng/ml

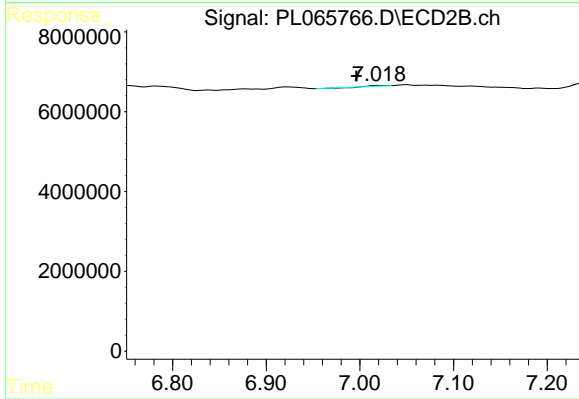
Instrument :
 ECD_L
 ClientSampled :
 I.BLK



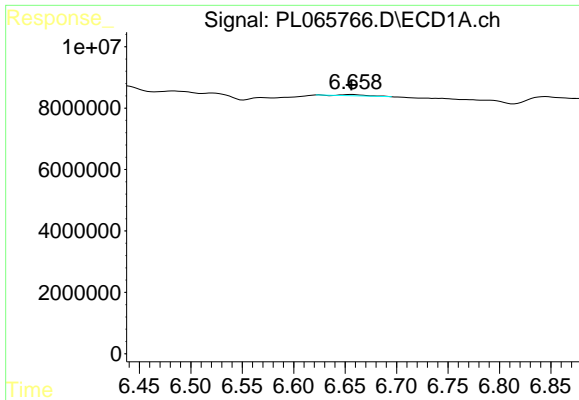
#18 Endrin aldehyde
 R.T.: 0.000 min
 Exp R.T. : 6.775 min
 Response: 0
 Conc: N.D.



#19 Endosulfan Sulfate
 R.T.: 0.000 min
 Exp R.T. : 6.391 min
 Response: 0
 Conc: N.D.

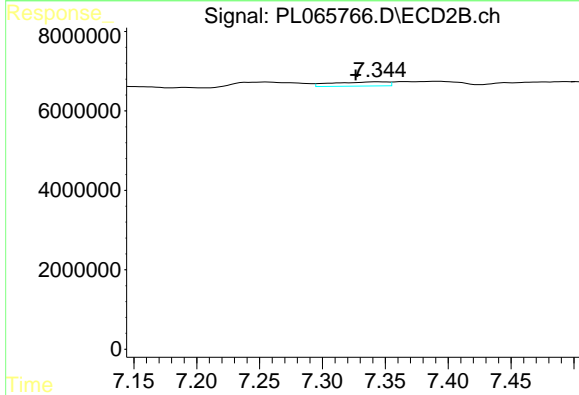


#19 Endosulfan Sulfate
 R.T.: 7.020 min
 Delta R.T.: 0.024 min
 Response: 37157
 Conc: 0.02 ng/ml

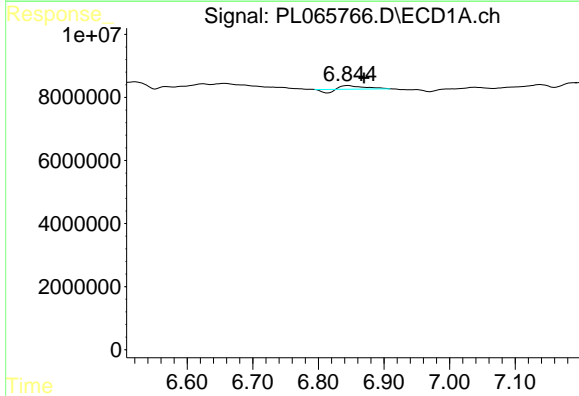


#20 Methoxychlor
 R.T.: 6.657 min
 Delta R.T.: 0.001 min
 Response: 617828
 Conc: 0.49 ng/ml

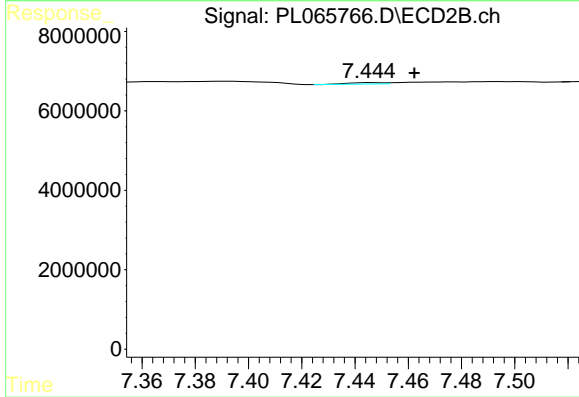
Instrument :
 ECD_L
 ClientSampled :
 I.BLK



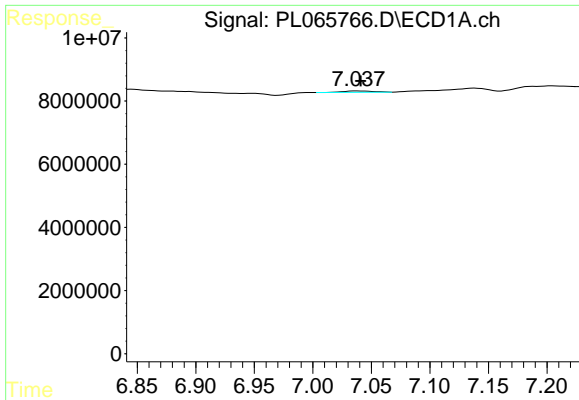
#20 Methoxychlor
 R.T.: 7.345 min
 Delta R.T.: 0.018 min
 Response: 3223943
 Conc: 2.55 ng/ml



#21 Endrin ketone
 R.T.: 6.845 min
 Delta R.T.: -0.024 min
 Response: 1888925
 Conc: 0.69 ng/ml

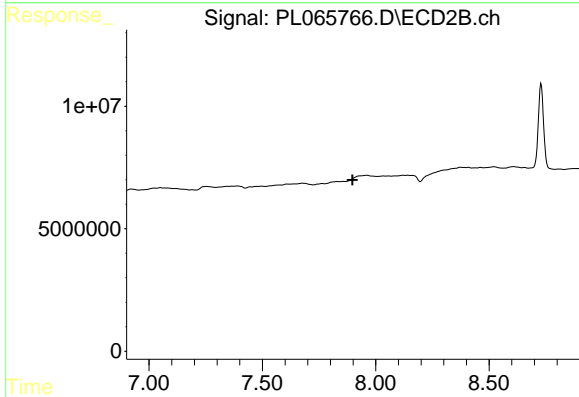


#21 Endrin ketone
 R.T.: 7.447 min
 Delta R.T.: -0.016 min
 Response: 340433
 Conc: 0.13 ng/ml

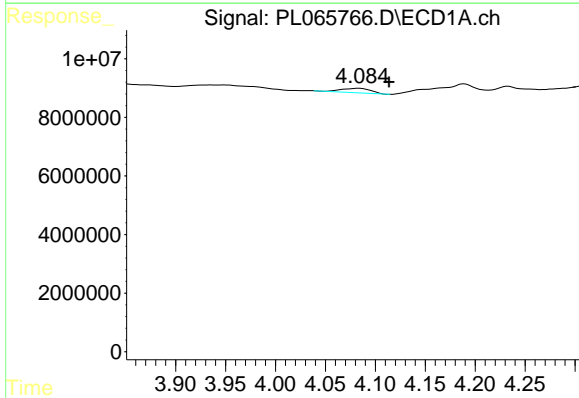


#22 Mirex
 R.T.: 7.038 min
 Delta R.T.: -0.003 min
 Response: 742296
 Conc: 0.35 ng/ml

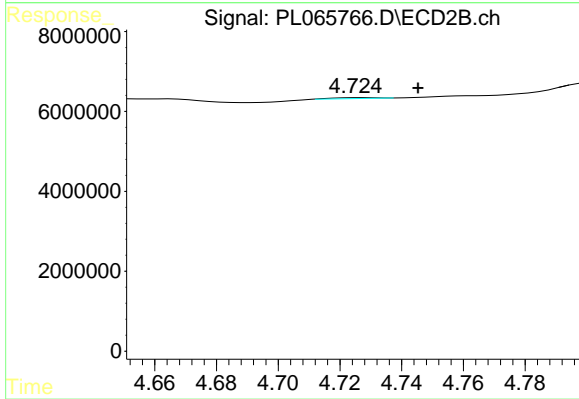
Instrument :
 ECD_L
 ClientSampleId :
 I.BLK



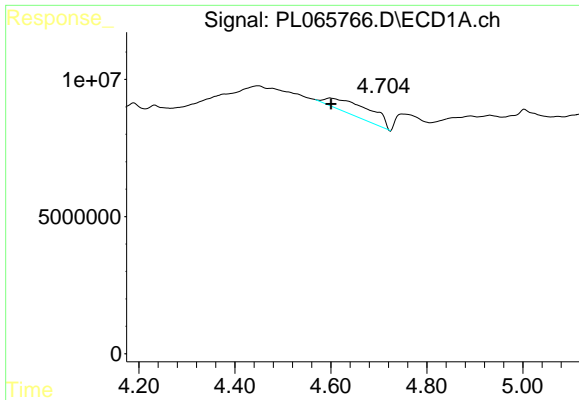
#22 Mirex
 R.T.: 0.000 min
 Exp R.T. : 7.898 min
 Response: 0
 Conc: N.D.



#23 Chlordane-1
 R.T.: 4.085 min
 Delta R.T.: -0.029 min
 Response: 3184962
 Conc: 35.30 ng/ml

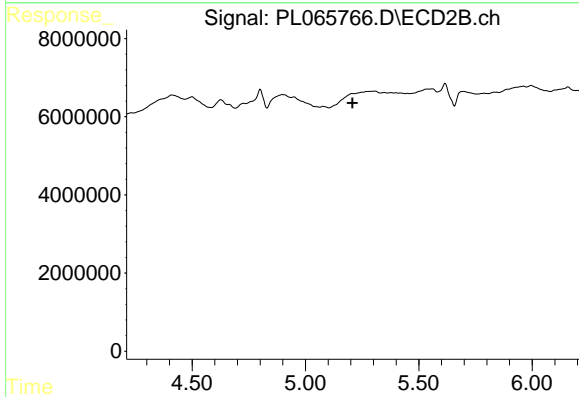


#23 Chlordane-1
 R.T.: 4.727 min
 Delta R.T.: -0.019 min
 Response: 228474
 Conc: 2.07 ng/ml

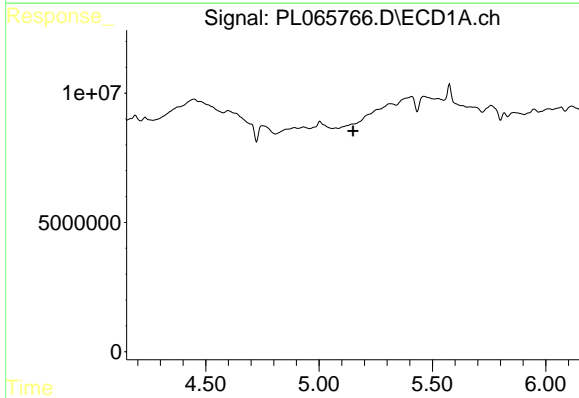


#24 Chlordane-2
 R.T.: 4.598 min
 Delta R.T.: -0.002 min
 Response: 32422762
 Conc: 282.10 ng/ml

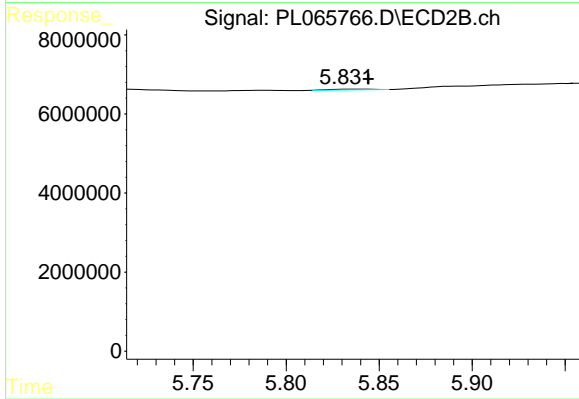
Instrument :
 ECD_L
 ClientSampled :
 I.BLK



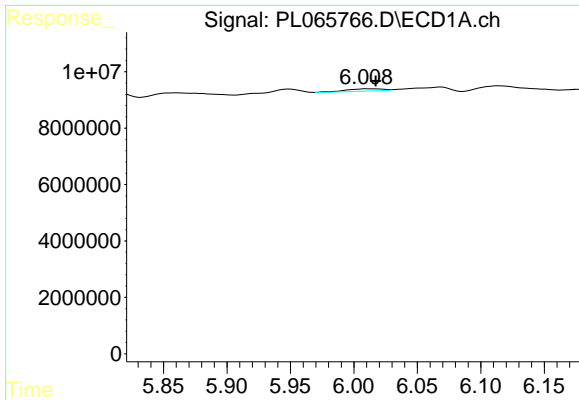
#24 Chlordane-2
 R.T.: 0.000 min
 Exp R.T. : 5.208 min
 Response: 0
 Conc: N.D.



#25 Chlordane-3
 R.T.: 0.000 min
 Exp R.T. : 5.150 min
 Response: 0
 Conc: N.D.

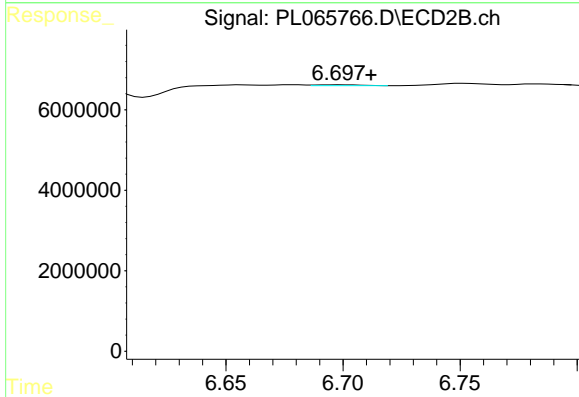


#25 Chlordane-3
 R.T.: 5.834 min
 Delta R.T.: -0.011 min
 Response: 312186
 Conc: 0.73 ng/ml

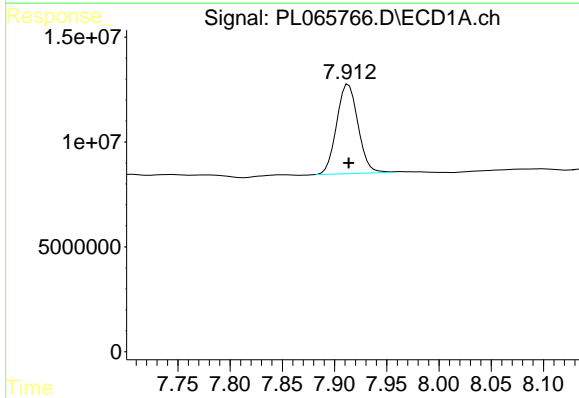


#27 Chlordane-5
 R.T.: 6.010 min
 Delta R.T.: -0.007 min
 Response: 1632822
 Conc: 15.96 ng/ml

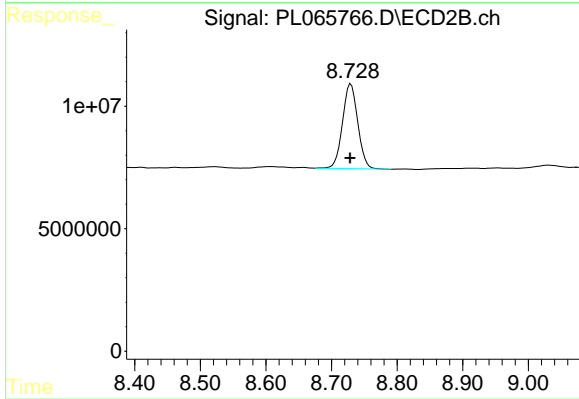
Instrument :
 ECD_L
 ClientSampled :
 I.BLK



#27 Chlordane-5
 R.T.: 6.698 min
 Delta R.T.: -0.014 min
 Response: 292452
 Conc: 3.51 ng/ml



#28 Decachlorobiphenyl
 R.T.: 7.913 min
 Delta R.T.: 0.000 min
 Response: 60561724
 Conc: 26.15 ng/ml



#28 Decachlorobiphenyl
 R.T.: 8.729 min
 Delta R.T.: 0.001 min
 Response: 55896546
 Conc: 24.79 ng/ml