

Data Path : Z:\pestpcbsrv\HPCHEM1\ECD_L\Data\PL040121\
 Data File : PL065786.D
 Signal(s) : Signal #1: ECD1A.ch Signal #2: ECD2B.ch
 Acq On : 01 Apr 2021 17:06
 Operator : AR\AJ
 Sample : M1874-03
 Misc :
 ALS Vial : 19 Sample Multiplier: 1

Instrument :
 ECD_L
 ClientSampleId :
 FS-SB18(39-40)

Integration File signal 1: autoint1.e
 Integration File signal 2: autoint2.e
 Quant Time: Apr 02 02:13:48 2021
 Quant Method : Z:\pestpcbsrv\HPCHEM1\ECD_L\methods\PL033121.M
 Quant Title : GC Extractables
 QLast Update : Wed Mar 31 15:57:28 2021
 Response via : Initial Calibration
 Integrator: ChemStation

Volume Inj. : 1 µl
 Signal #1 Phase : ZB-MR2 Signal #2 Phase: ZB-MR1
 Signal #1 Info : 30M x 0.32mm x0.2 Signal #2 Info : 30M x 0.32mm x0.5µm

Compound	RT#1	RT#2	Resp#1	Resp#2	ng/ml	ng/ml

System Monitoring Compounds						
1) SA Tetrachlo...	3.278	3.781	46388975	49102784	17.808	17.888
28) SA Decachlor...	7.912	8.729	43058844	40689281	18.592	18.048

Target Compounds

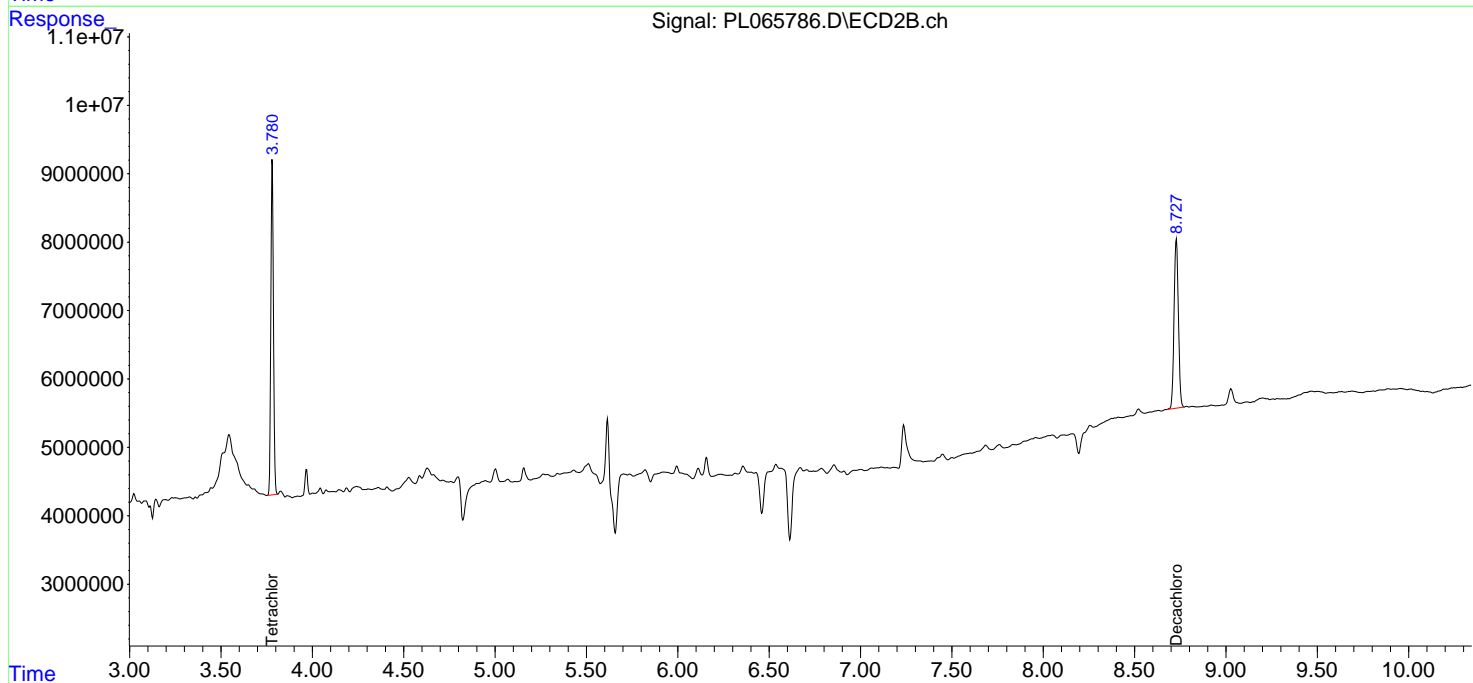
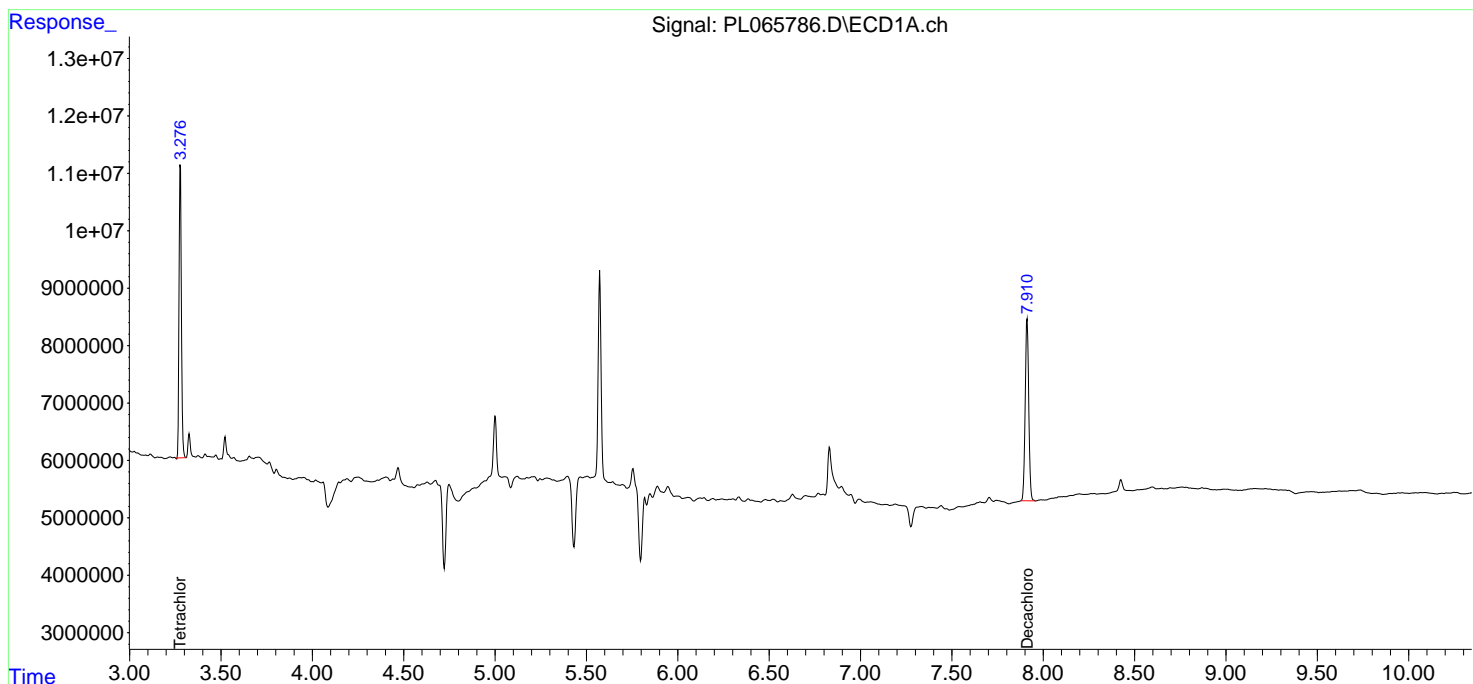
(f)=RT Delta > 1/2 Window (#)=Amounts differ by > 25% (m)=manual int.

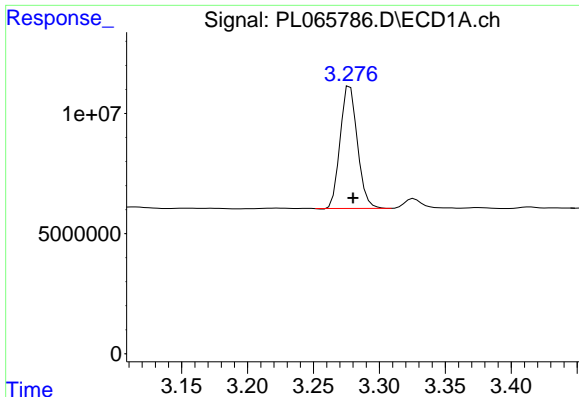
Data Path : Z:\pestpcbsrv\HPCHEM1\ECD_L\Data\PL040121\
 Data File : PL065786.D
 Signal(s) : Signal #1: ECD1A.ch Signal #2: ECD2B.ch
 Acq On : 01 Apr 2021 17:06
 Operator : AR\AJ
 Sample : M1874-03
 Misc :
 ALS Vial : 19 Sample Multiplier: 1

Instrument :
 ECD_L
 ClientSampleId :
 FS-SB18(39-40)

Integration File signal 1: autoint1.e
 Integration File signal 2: autoint2.e
 Quant Time: Apr 02 02:13:48 2021
 Quant Method : Z:\pestpcbsrv\HPCHEM1\ECD_L\methods\PL033121.M
 Quant Title : GC Extractables
 QLast Update : Wed Mar 31 15:57:28 2021
 Response via : Initial Calibration
 Integrator: ChemStation

Volume Inj. : 1 µl
 Signal #1 Phase : ZB-MR2 Signal #2 Phase: ZB-MR1
 Signal #1 Info : 30M x 0.32mm x0.2 Signal #2 Info : 30M x 0.32mm x0.5µm

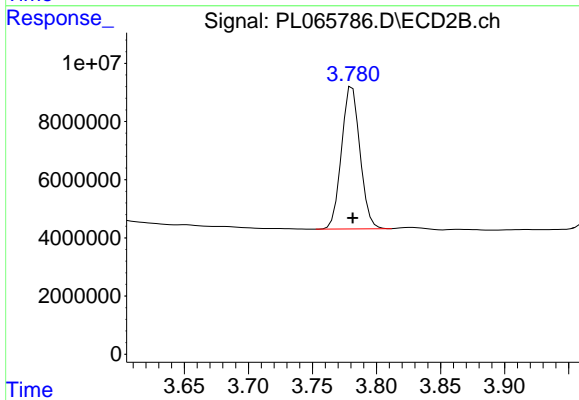




#1 Tetrachloro-m-xylene

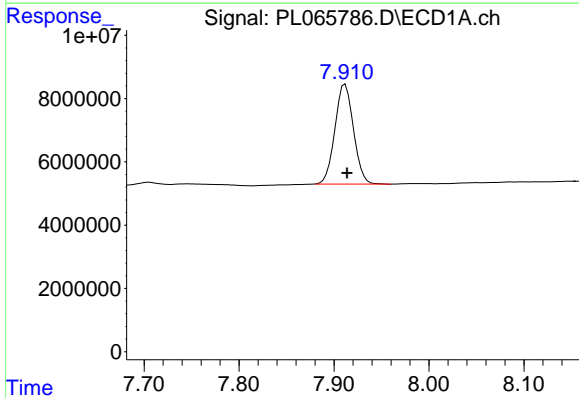
R.T.: 3.278 min
Delta R.T.: -0.002 min
Response: 46388975
Conc: 17.81 ng/ml

Instrument :
ECD_L
ClientSampleId :
FS-SB18(39-40)



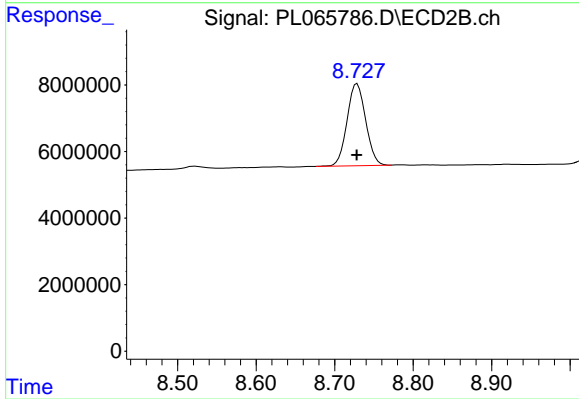
#1 Tetrachloro-m-xylene

R.T.: 3.781 min
Delta R.T.: 0.000 min
Response: 49102784
Conc: 17.89 ng/ml



#28 Decachlorobiphenyl

R.T.: 7.912 min
Delta R.T.: -0.002 min
Response: 43058844
Conc: 18.59 ng/ml



#28 Decachlorobiphenyl

R.T.: 8.729 min
Delta R.T.: 0.000 min
Response: 40689281
Conc: 18.05 ng/ml