

Data Path : Z:\pestpcbsrv\HPCHEM1\ECD_L\Data\PL040122\
 Data File : PL073777.D
 Signal(s) : Signal #1: ECD1A.ch Signal #2: ECD2B.ch
 Acq On : 01 Apr 2022 16:02
 Operator : AR\AJ
 Sample : N2185-01
 Misc :
 ALS Vial : 9 Sample Multiplier: 1

Instrument :
 ECD_L
 ClientSampleId :

Integration File signal 1: autoint1.e
 Integration File signal 2: autoint2.e
 Quant Time: Apr 01 23:38:36 2022
 Quant Method : Z:\pestpcbsrv\HPCHEM1\ECD_L\methods\PL031122.M
 Quant Title : GC Extractables
 QLast Update : Mon Mar 14 04:12:46 2022
 Response via : Initial Calibration
 Integrator: ChemStation

Volume Inj. : 1 µl
 Signal #1 Phase : ZB-MR2 Signal #2 Phase: ZB-MR1
 Signal #1 Info : 30M x 0.32mm x0.2 Signal #2 Info : 30M x 0.32mm x0.5µm

	Compound	RT#1	RT#2	Resp#1	Resp#2	ng/ml	ng/ml

System Monitoring Compounds							
1)	SA Tetrachlo...	4.652	5.487	2673280	17603395	8.347	10.726 #
28)	SA Decachlor...	10.425	11.335	1266151	46797784	2.490	26.171 #
Target Compounds							
2)	A alpha-BHC	5.342	6.048	211487	13521923	0.513	6.011 #
3)	MA gamma-BHC...	5.785	6.443	8083570	15482707	19.379	7.252 #
4)	MA Heptachlor	6.173	7.101	1148120	6293545	2.545	2.686
5)	MB Aldrin	6.521	7.463	2607423	5996460	6.311	2.862 #
6)	B beta-BHC	6.137f	6.705f	1253169	-4034726	6.086	N.D. #
7)	B delta-BHC	6.409	6.934	810630	9202208	2.018	4.273 #
8)	B Heptachlo...	7.099	7.898f	1073648	1617722	2.491	0.810 #
9)	A Endosulfan I	7.494	8.315	256775	2947235	0.626	1.615 #
10)	B gamma-Chl...	7.359	8.204	1949800	13831578	4.459	6.772 #
11)	B alpha-Chl...	7.452	8.276	5440445	5320063	12.311	2.660 #
12)	B 4,4'-DDE	7.645	8.466	1077039	4615689	3.001	2.575
13)	MA Dieldrin	7.794	8.628f	1888324	1842714	4.532	0.999 #
14)	MA Endrin	8.057	8.825f	933712	5961492	2.406	3.873 #
15)	B Endosulfa...	8.394	0.000	1409039	0	3.605	N.D. #
16)	A 4,4'-DDD	8.243	8.978	3069325	10276319	9.452	7.040 #
17)	MA 4,4'-DDT	8.495	9.300	149856	3037553	0.396	1.858 #
18)	B Endrin al...	8.572	9.228f	1854480	-23088	5.864	N.D. #
20)	A Methoxychlor	9.098	9.772	2680772	11961893	10.450	13.275 #
21)	B Endrin ke...	9.317	9.924	4080500	18501596	8.341	11.209 #
22)	Mirex	9.503	10.387f	246889	1172058	0.524	0.863 #
23)	Chlordane-1	5.949f	6.864	2650491	1521260	223.576	22.269 #
24)	Chlordane-2	6.675	7.463f	6738403	5996460	413.072	83.431 #
25)	Chlordane-3	7.359	8.204	1949800	13831578	47.749	51.014
26)	Chlordane-4	7.452	8.276	5440445	5320063	122.751	16.060 #

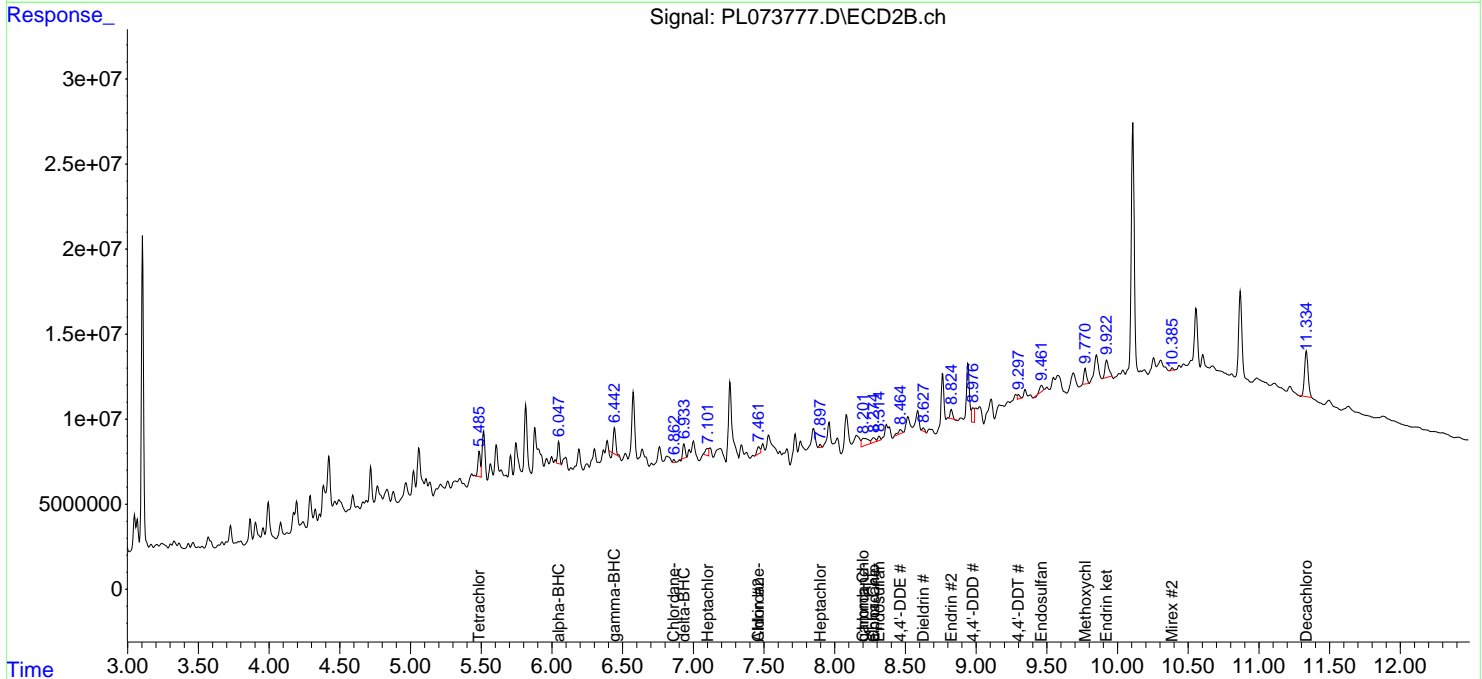
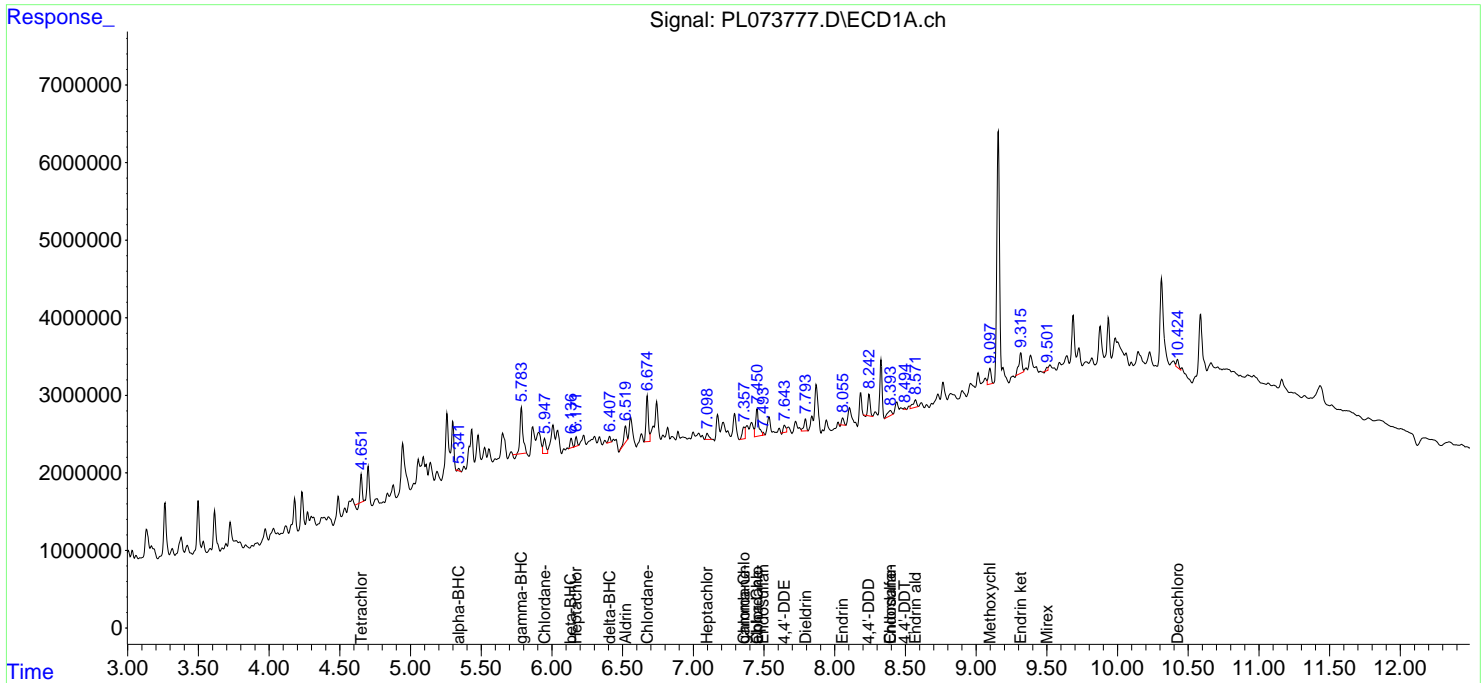
(f)=RT Delta > 1/2 Window (#)=Amounts differ by > 25% (m)=manual int.

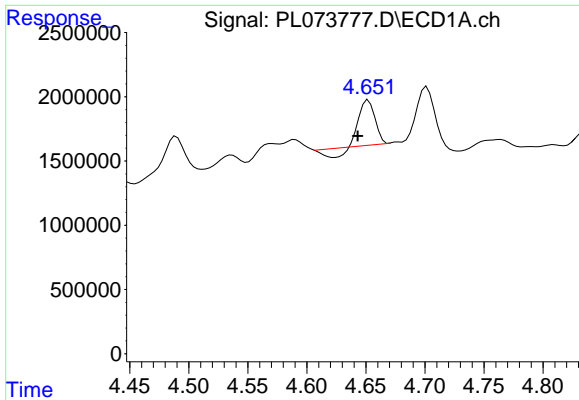
Data Path : Z:\pestpcbsrv\HPCHEM1\ECD_L\Data\PL040122\
 Data File : PL073777.D
 Signal(s) : Signal #1: ECD1A.ch Signal #2: ECD2B.ch
 Acq On : 01 Apr 2022 16:02
 Operator : AR\AJ
 Sample : N2185-01
 Misc :
 ALS Vial : 9 Sample Multiplier: 1

Instrument :
 ECD_L
 ClientSampleId :

Integration File signal 1: autoint1.e
 Integration File signal 2: autoint2.e
 Quant Time: Apr 01 23:38:36 2022
 Quant Method : Z:\pestpcbsrv\HPCHEM1\ECD_L\methods\PL031122.M
 Quant Title : GC Extractables
 QLast Update : Mon Mar 14 04:12:46 2022
 Response via : Initial Calibration
 Integrator: ChemStation

Volume Inj. : 1 µl
 Signal #1 Phase : ZB-MR2 Signal #2 Phase: ZB-MR1
 Signal #1 Info : 30M x 0.32mm x0.2 Signal #2 Info : 30M x 0.32mm x0.5µm

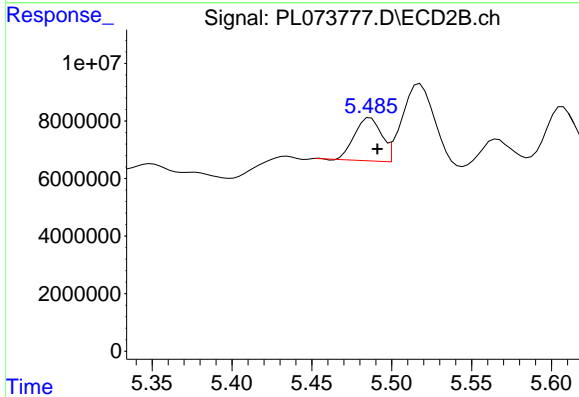




#1 Tetrachloro-m-xylene

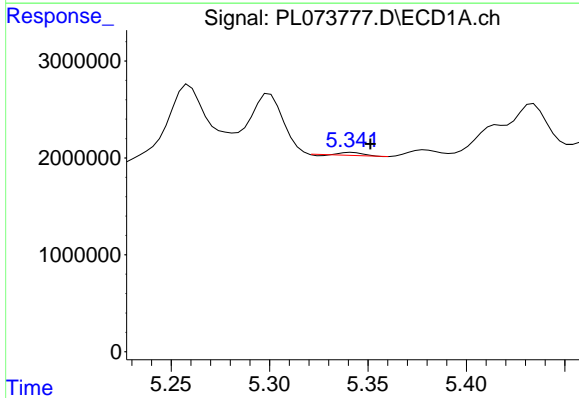
R.T.: 4.652 min
 Delta R.T.: 0.009 min
 Response: 2673280
 Conc: 8.35 ng/ml

Instrument :
 ECD_L
 ClientSampleId :



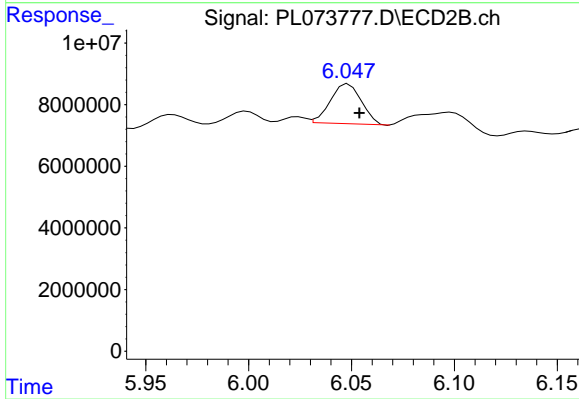
#1 Tetrachloro-m-xylene

R.T.: 5.487 min
 Delta R.T.: -0.004 min
 Response: 17603395
 Conc: 10.73 ng/ml



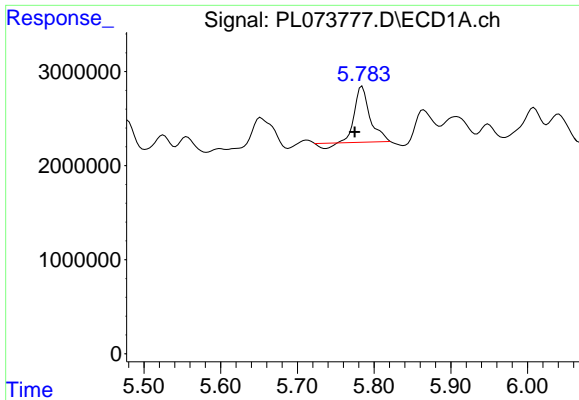
#2 alpha-BHC

R.T.: 5.342 min
 Delta R.T.: -0.009 min
 Response: 211487
 Conc: 0.51 ng/ml



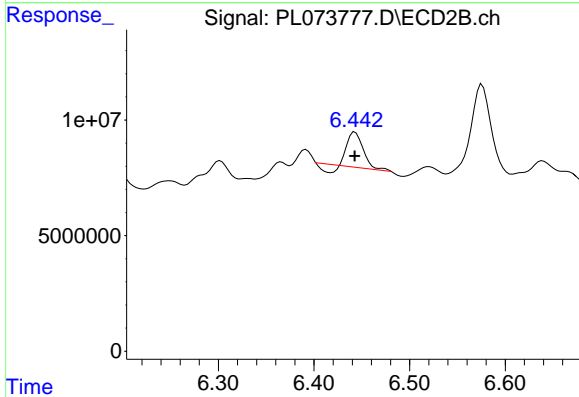
#2 alpha-BHC

R.T.: 6.048 min
 Delta R.T.: -0.005 min
 Response: 13521923
 Conc: 6.01 ng/ml

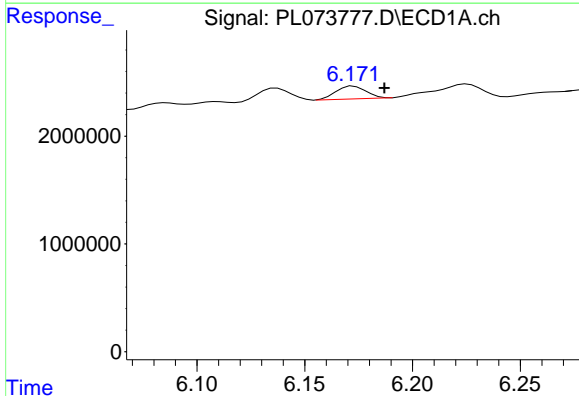


#3 gamma-BHC (Lindane)
 R.T.: 5.785 min
 Delta R.T.: 0.010 min
 Response: 8083570
 Conc: 19.38 ng/ml

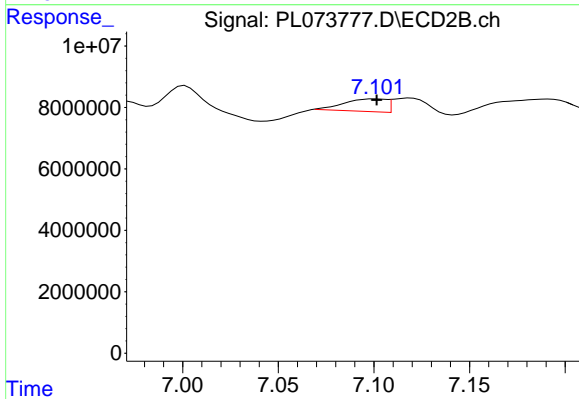
Instrument :
 ECD_L
 ClientSampleId :



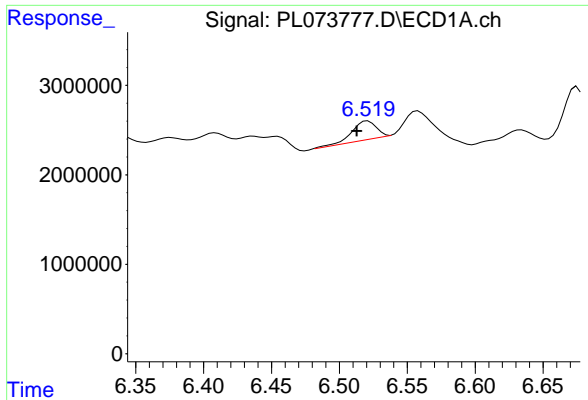
#3 gamma-BHC (Lindane)
 R.T.: 6.443 min
 Delta R.T.: 0.000 min
 Response: 15482707
 Conc: 7.25 ng/ml



#4 Heptachlor
 R.T.: 6.173 min
 Delta R.T.: -0.014 min
 Response: 1148120
 Conc: 2.54 ng/ml

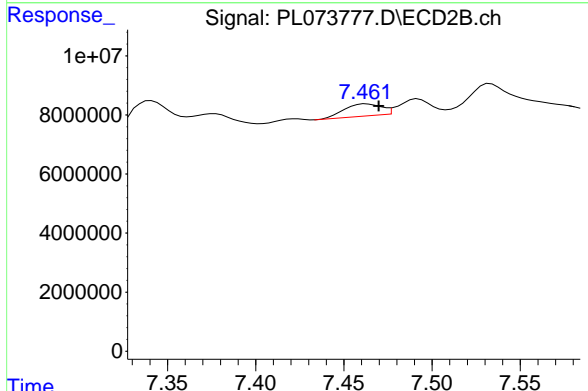


#4 Heptachlor
 R.T.: 7.101 min
 Delta R.T.: 0.000 min
 Response: 6293545
 Conc: 2.69 ng/ml

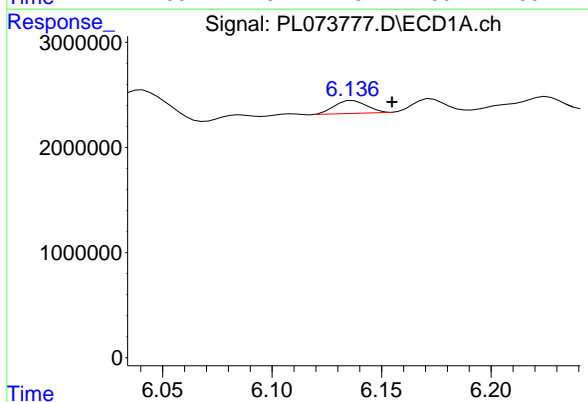


#5 Aldrin
 R.T.: 6.521 min
 Delta R.T.: 0.008 min
 Response: 2607423
 Conc: 6.31 ng/ml

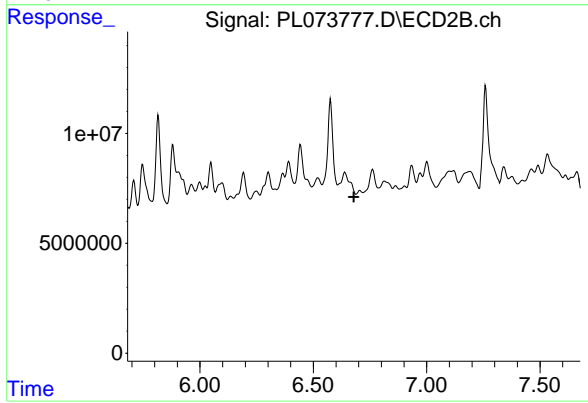
Instrument :
 ECD_L
 ClientSampleId :



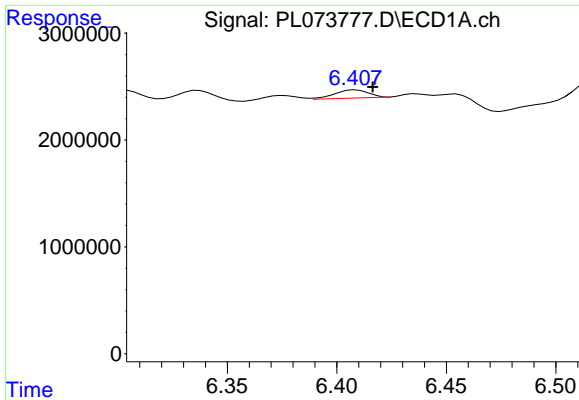
#5 Aldrin
 R.T.: 7.463 min
 Delta R.T.: -0.007 min
 Response: 5996460
 Conc: 2.86 ng/ml



#6 beta-BHC
 R.T.: 6.137 min
 Delta R.T.: -0.018 min
 Response: 1253169
 Conc: 6.09 ng/ml

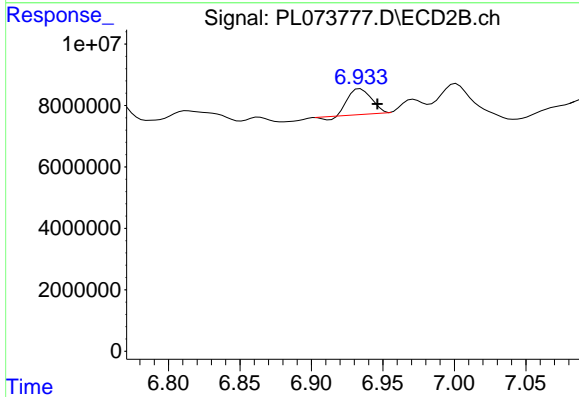


#6 beta-BHC
 R.T.: 6.705 min
 Delta R.T.: 0.027 min
 Response: -4034726
 Conc: N.D.

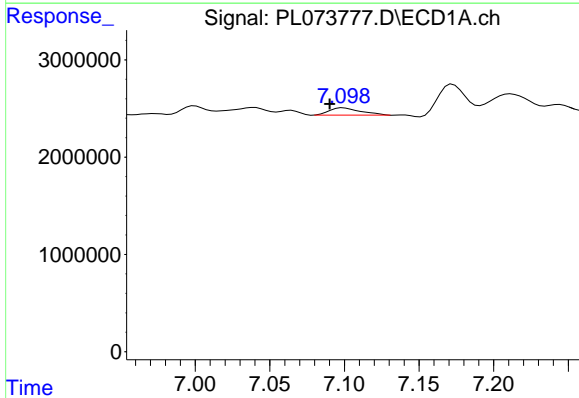


#7 delta-BHC
 R.T.: 6.409 min
 Delta R.T.: -0.008 min
 Response: 810630
 Conc: 2.02 ng/ml

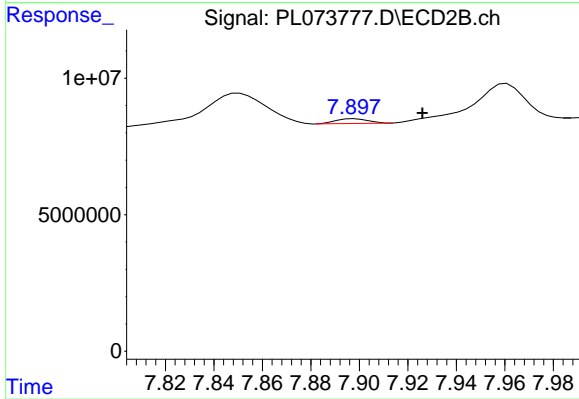
Instrument :
 ECD_L
 ClientSampleId :



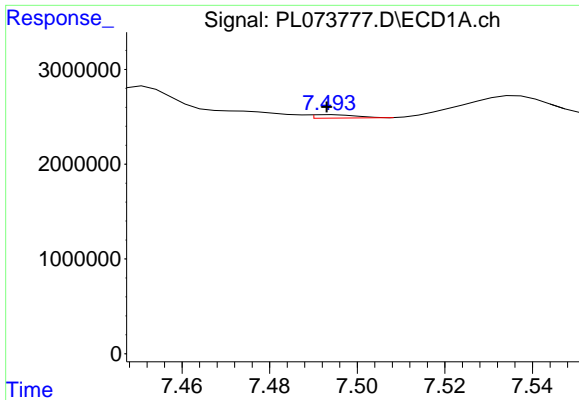
#7 delta-BHC
 R.T.: 6.934 min
 Delta R.T.: -0.012 min
 Response: 9202208
 Conc: 4.27 ng/ml



#8 Heptachlor epoxide
 R.T.: 7.099 min
 Delta R.T.: 0.009 min
 Response: 1073648
 Conc: 2.49 ng/ml



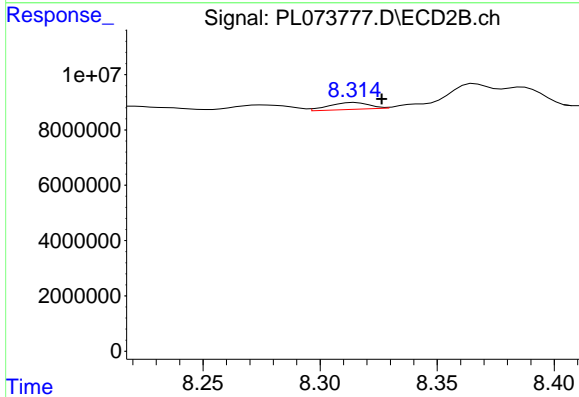
#8 Heptachlor epoxide
 R.T.: 7.898 min
 Delta R.T.: -0.028 min
 Response: 1617722
 Conc: 0.81 ng/ml



#9 Endosulfan I

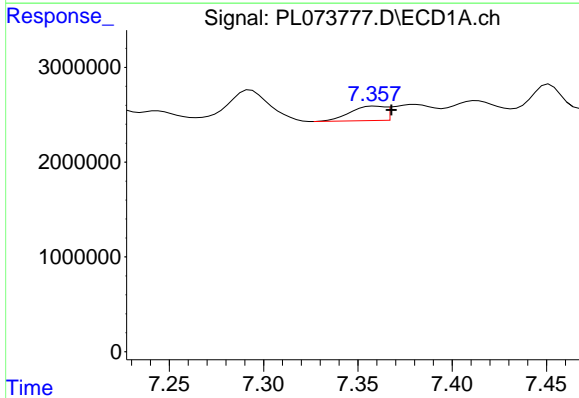
R.T.: 7.494 min
 Delta R.T.: 0.001 min
 Response: 256775
 Conc: 0.63 ng/ml

Instrument :
 ECD_L
 ClientSampleId :



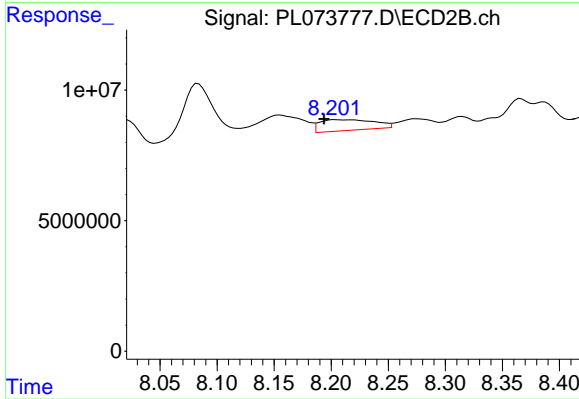
#9 Endosulfan I

R.T.: 8.315 min
 Delta R.T.: -0.011 min
 Response: 2947235
 Conc: 1.61 ng/ml



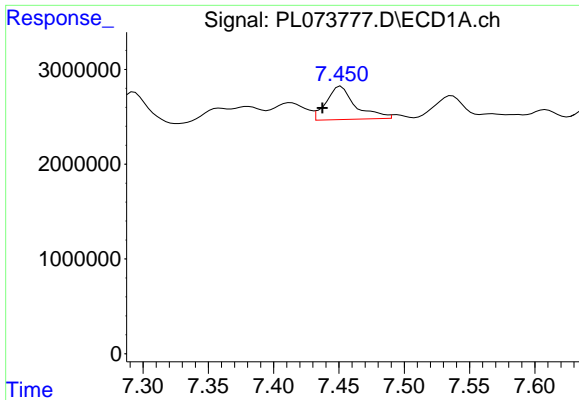
#10 gamma-Chlordane

R.T.: 7.359 min
 Delta R.T.: -0.009 min
 Response: 1949800
 Conc: 4.46 ng/ml



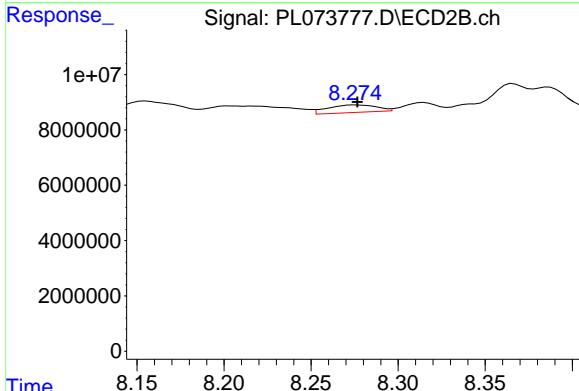
#10 gamma-Chlordane

R.T.: 8.204 min
 Delta R.T.: 0.010 min
 Response: 13831578
 Conc: 6.77 ng/ml

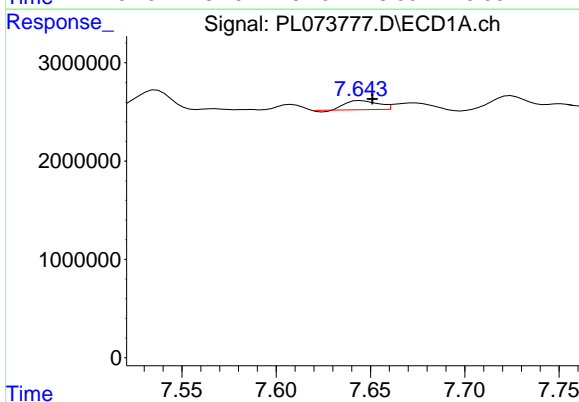


#11 alpha-Chlordane
 R.T.: 7.452 min
 Delta R.T.: 0.014 min
 Response: 5440445
 Conc: 12.31 ng/ml

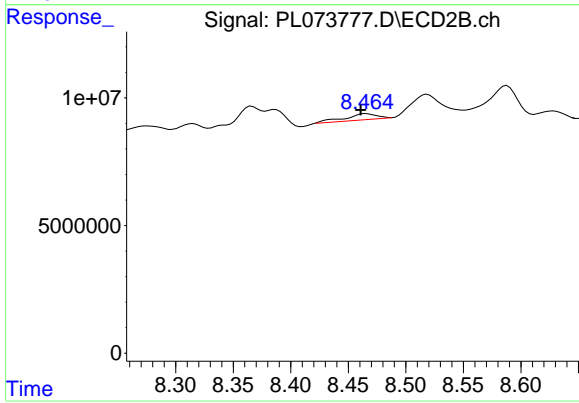
Instrument :
 ECD_L
 ClientSampleId :



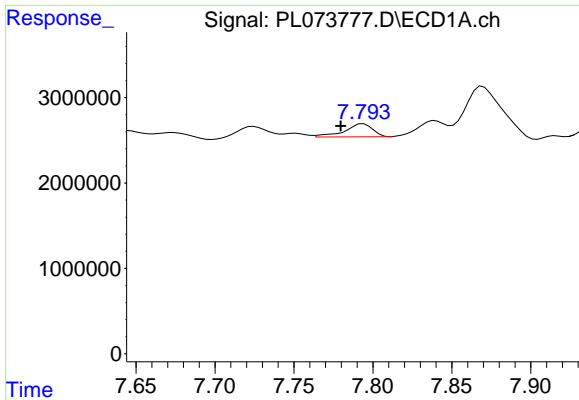
#11 alpha-Chlordane
 R.T.: 8.276 min
 Delta R.T.: 0.000 min
 Response: 5320063
 Conc: 2.66 ng/ml



#12 4,4'-DDE
 R.T.: 7.645 min
 Delta R.T.: -0.006 min
 Response: 1077039
 Conc: 3.00 ng/ml



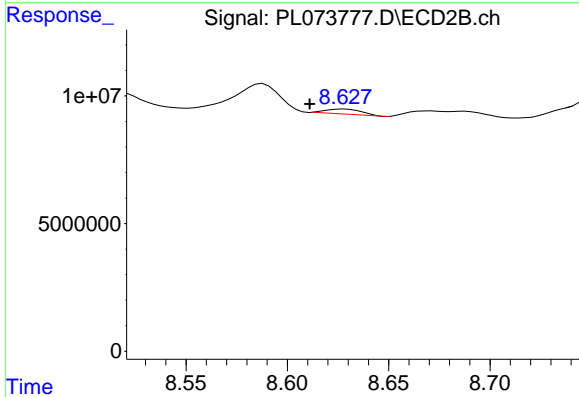
#12 4,4'-DDE
 R.T.: 8.466 min
 Delta R.T.: 0.005 min
 Response: 4615689
 Conc: 2.58 ng/ml



#13 Dieldrin

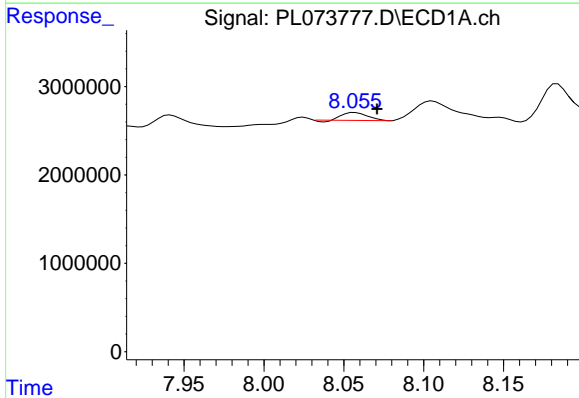
R.T.: 7.794 min
 Delta R.T.: 0.014 min
 Response: 1888324
 Conc: 4.53 ng/ml

Instrument :
 ECD_L
 ClientSampleId :



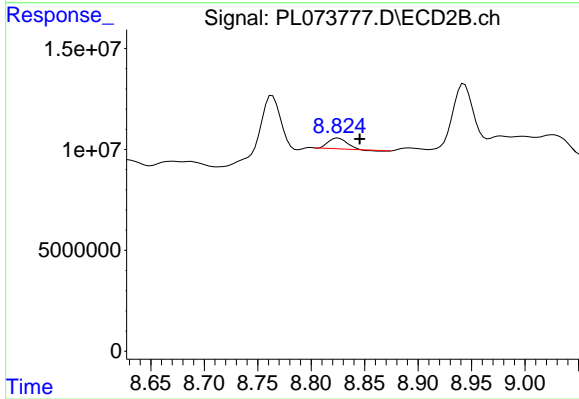
#13 Dieldrin

R.T.: 8.628 min
 Delta R.T.: 0.017 min
 Response: 1842714
 Conc: 1.00 ng/ml



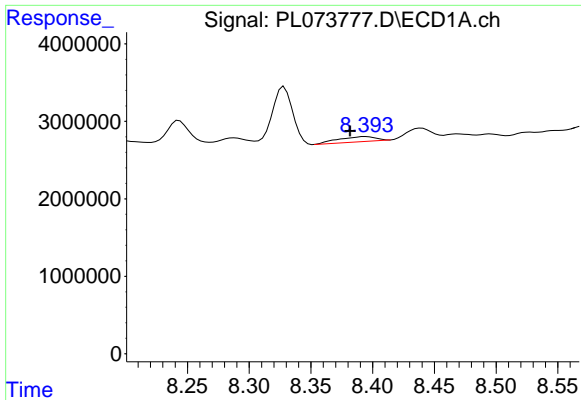
#14 Endrin

R.T.: 8.057 min
 Delta R.T.: -0.014 min
 Response: 933712
 Conc: 2.41 ng/ml



#14 Endrin

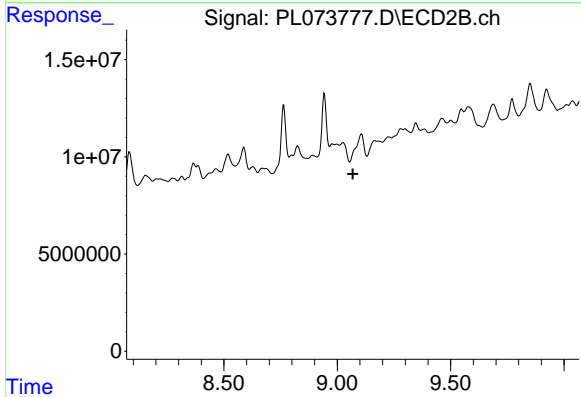
R.T.: 8.825 min
 Delta R.T.: -0.020 min
 Response: 5961492
 Conc: 3.87 ng/ml



#15 Endosulfan II

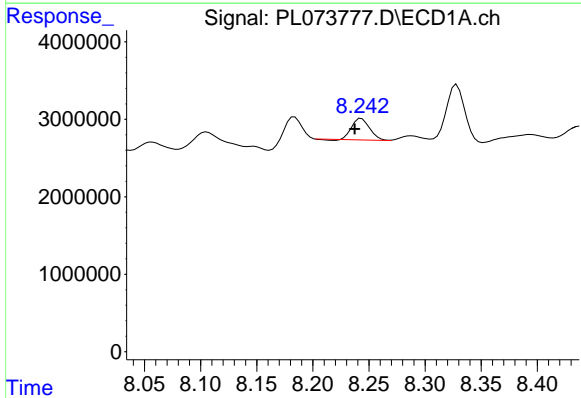
R.T.: 8.394 min
 Delta R.T.: 0.013 min
 Response: 1409039
 Conc: 3.60 ng/ml

Instrument :
 ECD_L
 ClientSampleId :



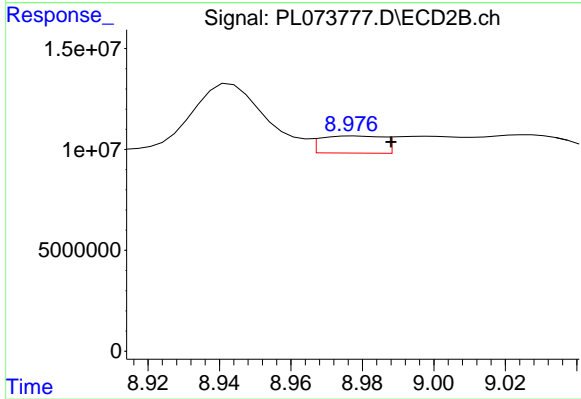
#15 Endosulfan II

R.T.: 0.000 min
 Exp R.T. : 9.069 min
 Response: 0
 Conc: N.D.



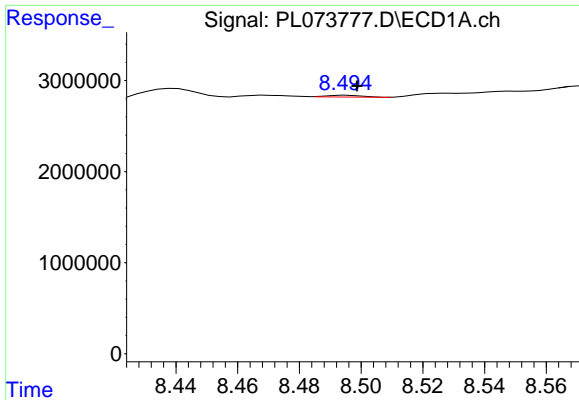
#16 4,4'-DDD

R.T.: 8.243 min
 Delta R.T.: 0.006 min
 Response: 3069325
 Conc: 9.45 ng/ml



#16 4,4'-DDD

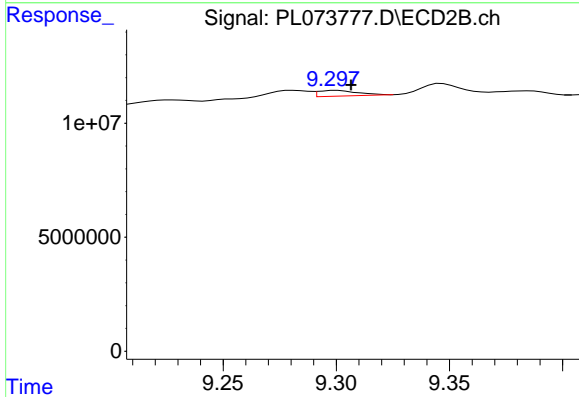
R.T.: 8.978 min
 Delta R.T.: -0.010 min
 Response: 10276319
 Conc: 7.04 ng/ml



#17 4,4'-DDT

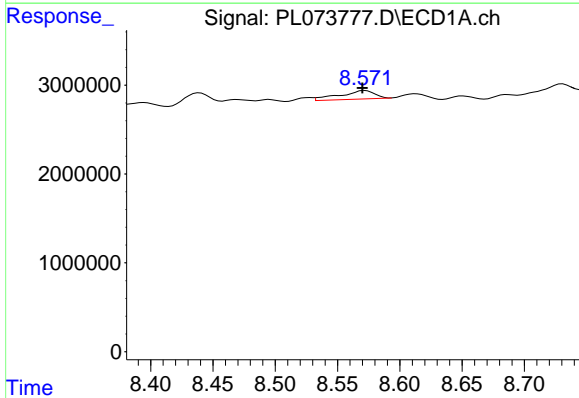
R.T.: 8.495 min
 Delta R.T.: -0.003 min
 Response: 149856
 Conc: 0.40 ng/ml

Instrument :
 ECD_L
 ClientSampleId :



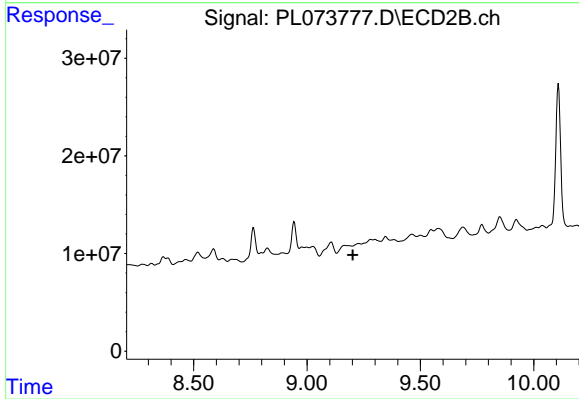
#17 4,4'-DDT

R.T.: 9.300 min
 Delta R.T.: -0.006 min
 Response: 3037553
 Conc: 1.86 ng/ml



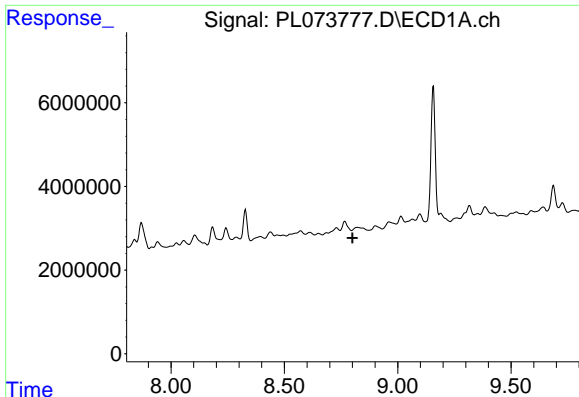
#18 Endrin aldehyde

R.T.: 8.572 min
 Delta R.T.: 0.002 min
 Response: 1854480
 Conc: 5.86 ng/ml



#18 Endrin aldehyde

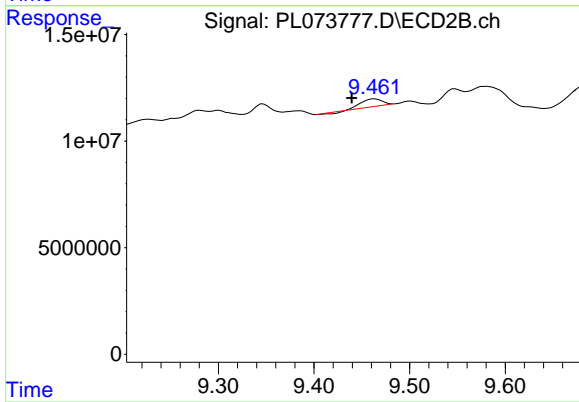
R.T.: 9.228 min
 Delta R.T.: 0.026 min
 Response: -23088
 Conc: N.D.



#19 Endosulfan Sulfate

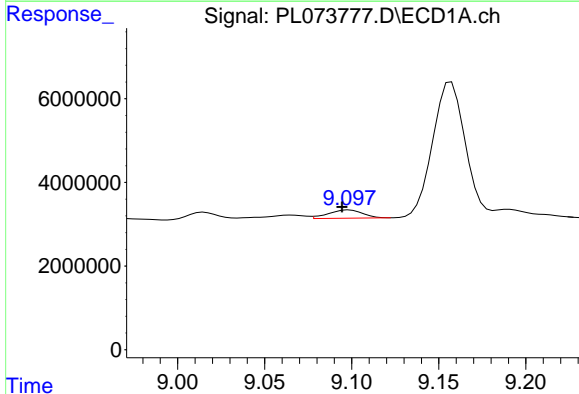
R.T.: 8.822 min
 Delta R.T.: 0.021 min
 Response: -2003952
 Conc: N.D.

Instrument :
 ECD_L
 ClientSampleId :



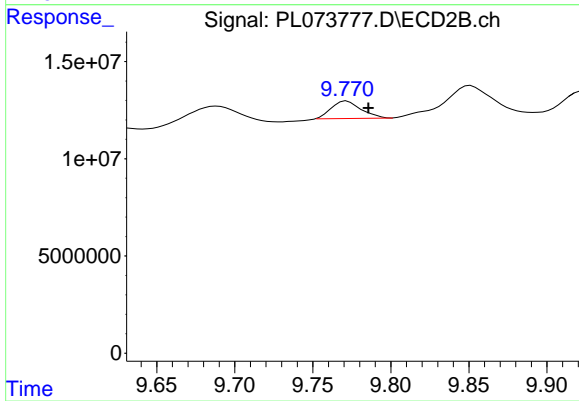
#19 Endosulfan Sulfate

R.T.: 9.463 min
 Delta R.T.: 0.024 min
 Response: 5466396
 Conc: 3.47 ng/ml



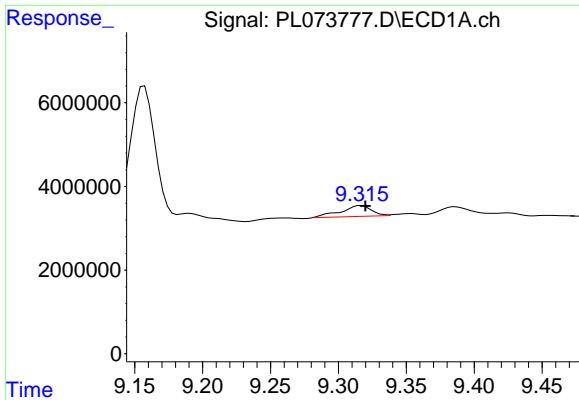
#20 Methoxychlor

R.T.: 9.098 min
 Delta R.T.: 0.004 min
 Response: 2680772
 Conc: 10.45 ng/ml



#20 Methoxychlor

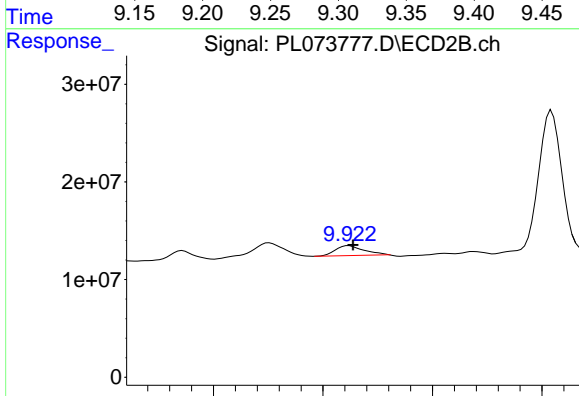
R.T.: 9.772 min
 Delta R.T.: -0.014 min
 Response: 11961893
 Conc: 13.28 ng/ml



#21 Endrin ketone

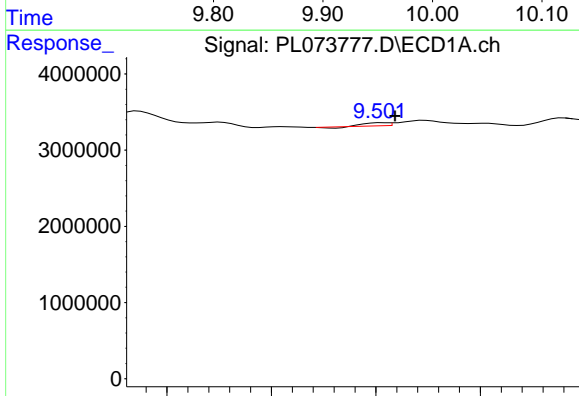
R.T.: 9.317 min
 Delta R.T.: -0.003 min
 Response: 4080500
 Conc: 8.34 ng/ml

Instrument :
 ECD_L
 ClientSampleId :



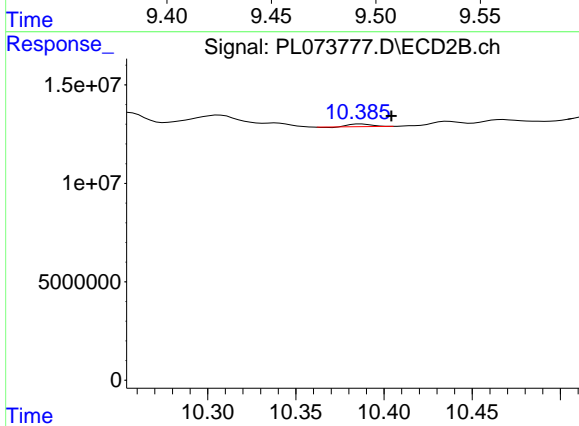
#21 Endrin ketone

R.T.: 9.924 min
 Delta R.T.: -0.004 min
 Response: 18501596
 Conc: 11.21 ng/ml



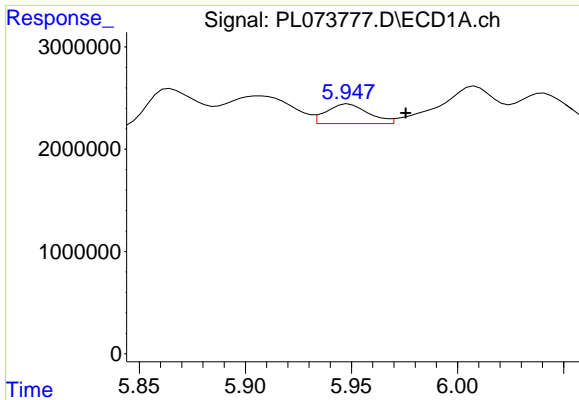
#22 Mirex

R.T.: 9.503 min
 Delta R.T.: -0.006 min
 Response: 246889
 Conc: 0.52 ng/ml



#22 Mirex

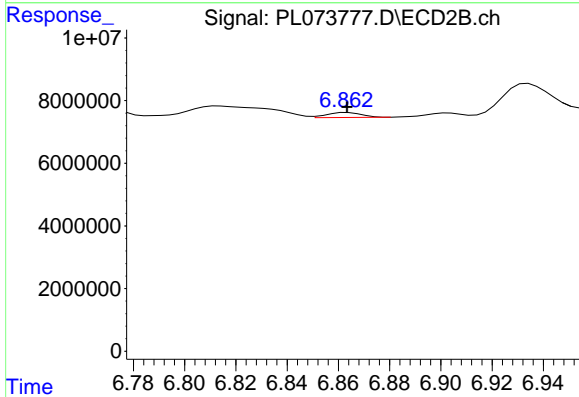
R.T.: 10.387 min
 Delta R.T.: -0.017 min
 Response: 1172058
 Conc: 0.86 ng/ml



#23 Chlordane-1

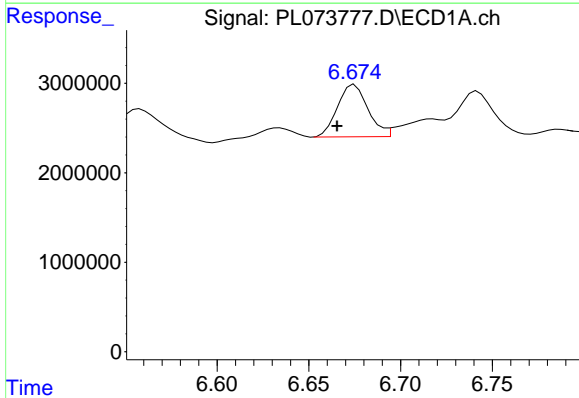
R.T.: 5.949 min
 Delta R.T.: -0.027 min
 Response: 2650491
 Conc: 223.58 ng/ml

Instrument :
 ECD_L
 ClientSampleId :



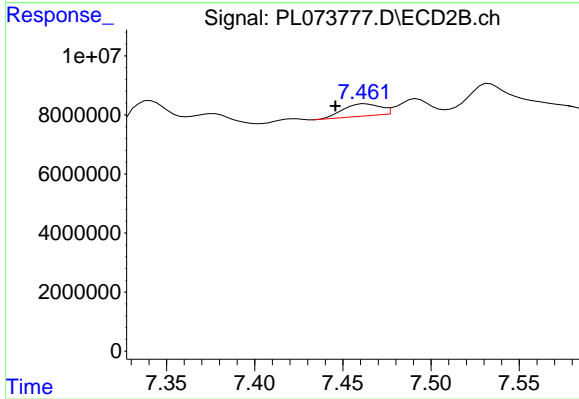
#23 Chlordane-1

R.T.: 6.864 min
 Delta R.T.: 0.000 min
 Response: 1521260
 Conc: 22.27 ng/ml



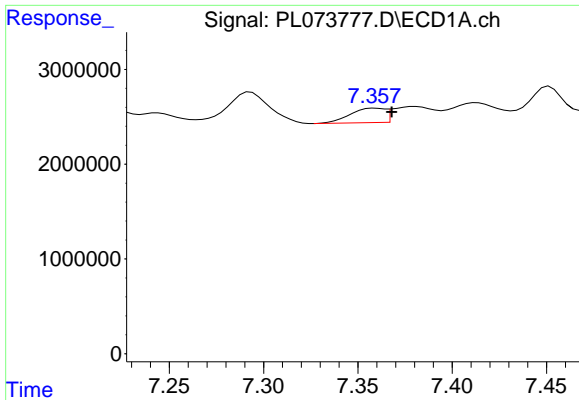
#24 Chlordane-2

R.T.: 6.675 min
 Delta R.T.: 0.009 min
 Response: 6738403
 Conc: 413.07 ng/ml



#24 Chlordane-2

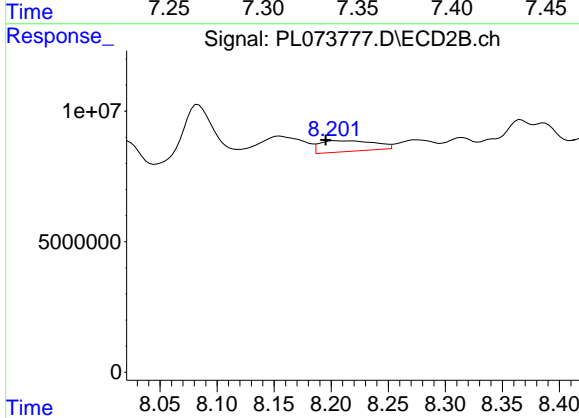
R.T.: 7.463 min
 Delta R.T.: 0.017 min
 Response: 5996460
 Conc: 83.43 ng/ml



#25 Chlordane-3

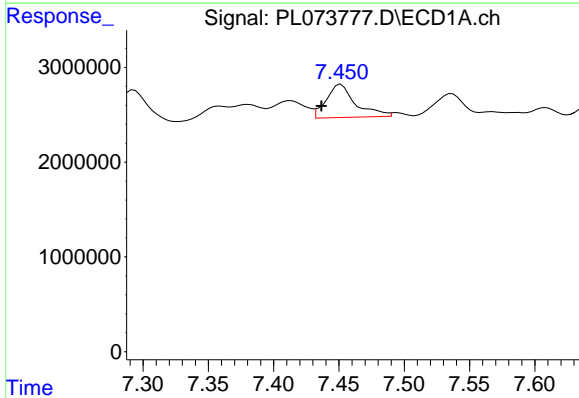
R.T.: 7.359 min
 Delta R.T.: -0.009 min
 Response: 1949800
 Conc: 47.75 ng/ml

Instrument :
 ECD_L
 ClientSampleId :



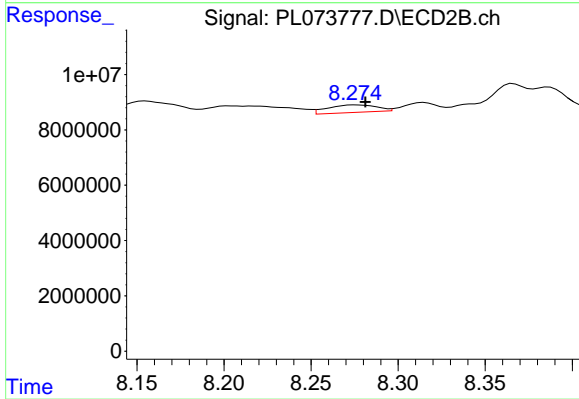
#25 Chlordane-3

R.T.: 8.204 min
 Delta R.T.: 0.009 min
 Response: 13831578
 Conc: 51.01 ng/ml



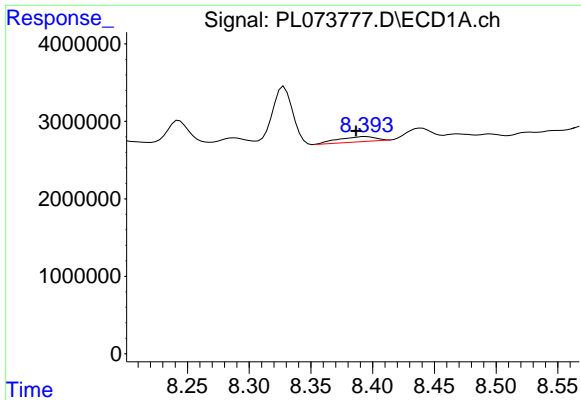
#26 Chlordane-4

R.T.: 7.452 min
 Delta R.T.: 0.015 min
 Response: 5440445
 Conc: 122.75 ng/ml



#26 Chlordane-4

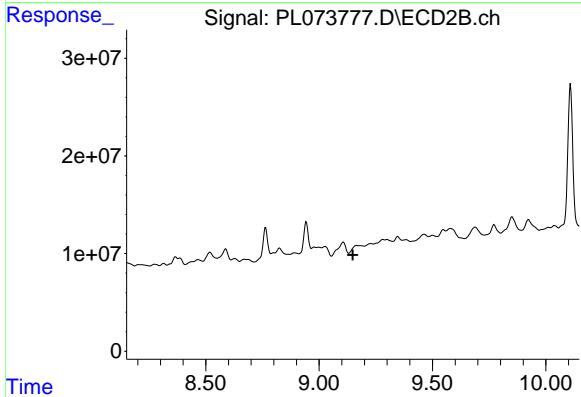
R.T.: 8.276 min
 Delta R.T.: -0.006 min
 Response: 5320063
 Conc: 16.06 ng/ml



#27 Chlordane-5

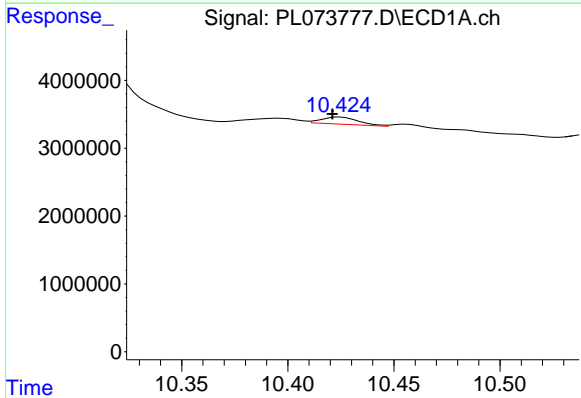
R.T.: 8.394 min
 Delta R.T.: 0.008 min
 Response: 1409039
 Conc: 86.05 ng/ml

Instrument :
 ECD_L
 ClientSampleId :



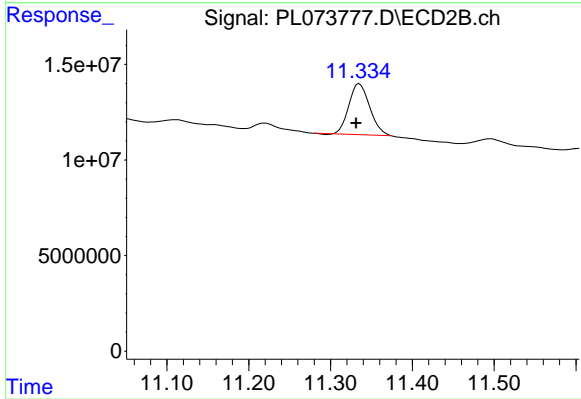
#27 Chlordane-5

R.T.: 9.166 min
 Delta R.T.: 0.017 min
 Response: -10074106
 Conc: N.D.



#28 Decachlorobiphenyl

R.T.: 10.425 min
 Delta R.T.: 0.004 min
 Response: 1266151
 Conc: 2.49 ng/ml



#28 Decachlorobiphenyl

R.T.: 11.335 min
 Delta R.T.: 0.004 min
 Response: 46797784
 Conc: 26.17 ng/ml