

Data Path : Z:\pestpcbsrv\HPCHEM1\ECD_L\Data\PL040124\
Data File : PL088850.D
Signal(s) : Signal #1: ECD1A.ch Signal #2: ECD2B.ch
Acq On : 01 Apr 2024 15:28
Operator : AR\AJ
Sample : P1937-03
Misc :
ALS Vial : 12 Sample Multiplier: 1

Instrument :
ECD_L
ClientSampleId :
369

Manual Integrations
APPROVED

Reviewed By :Abdul Mirza 04/02/2024
Supervised By :Ankita Jodhani 04/02/2024

Integration File signal 1: autoint1.e
Integration File signal 2: autoint2.e
Quant Time: Apr 02 01:14:49 2024
Quant Method : Z:\pestpcbsrv\HPCHEM1\ECD_L\methods\PL031324.M
Quant Title : GC Extractables
QLast Update : Wed Mar 13 15:45:55 2024
Response via : Initial Calibration
Integrator: ChemStation

Volume Inj. : 1 µl
Signal #1 Phase : ZB-MR2 Signal #2 Phase: ZB-MR1
Signal #1 Info : 30M x 0.32mm x0.2 Signal #2 Info : 30M x 0.32mm x0.5µm

Compound	RT#1	RT#2	Resp#1	Resp#2	ng/ml	ng/ml

System Monitoring Compounds						
1) SA Tetrachlo...	3.632	2.850	27544610	14703716	10.394m	11.033m
28) SA Decachlor...	9.298	8.077	18783157	11386774	7.599m	8.398

Target Compounds

(f)=RT Delta > 1/2 Window (#)=Amounts differ by > 25% (m)=manual int.

Data Path : Z:\pestpcbsrv\HPCHEM1\ECD_L\Data\PL040124\
 Data File : PL088850.D
 Signal(s) : Signal #1: ECD1A.ch Signal #2: ECD2B.ch
 Acq On : 01 Apr 2024 15:28
 Operator : AR\AJ
 Sample : P1937-03
 Misc :
 ALS Vial : 12 Sample Multiplier: 1

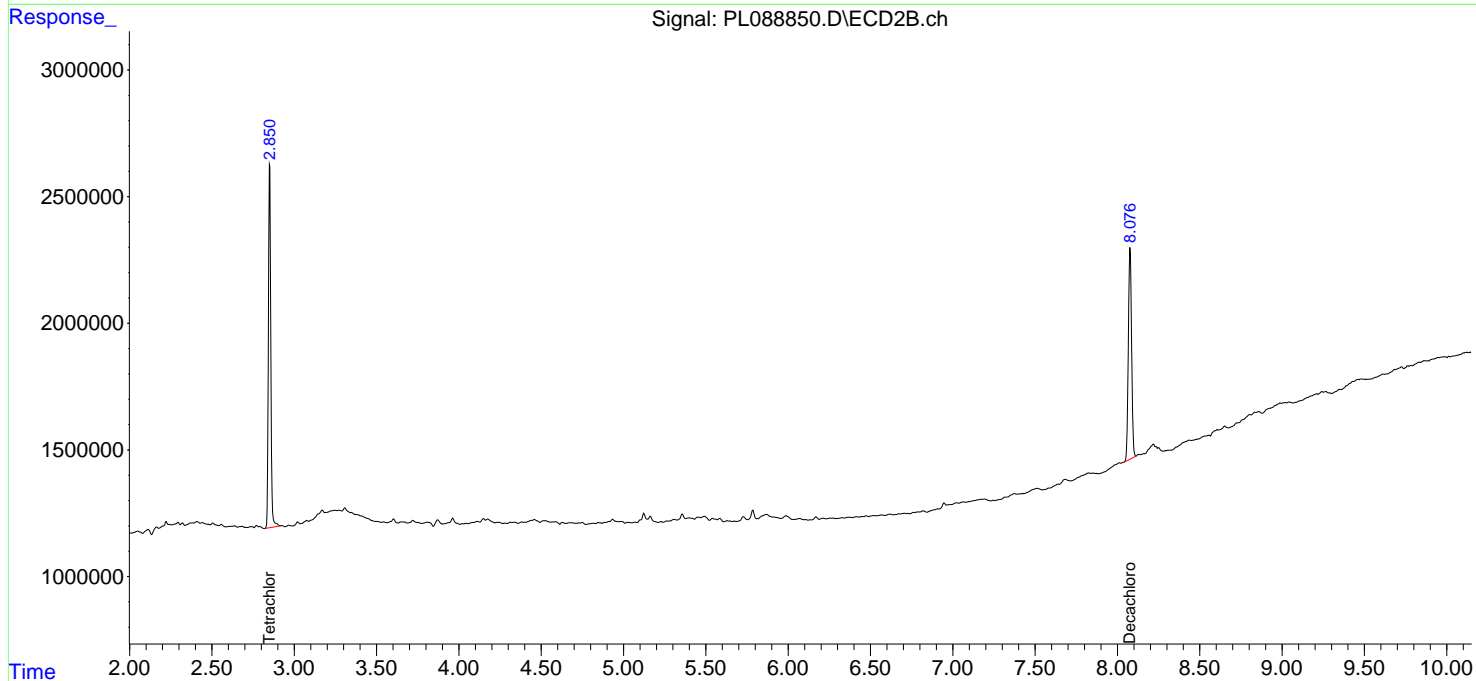
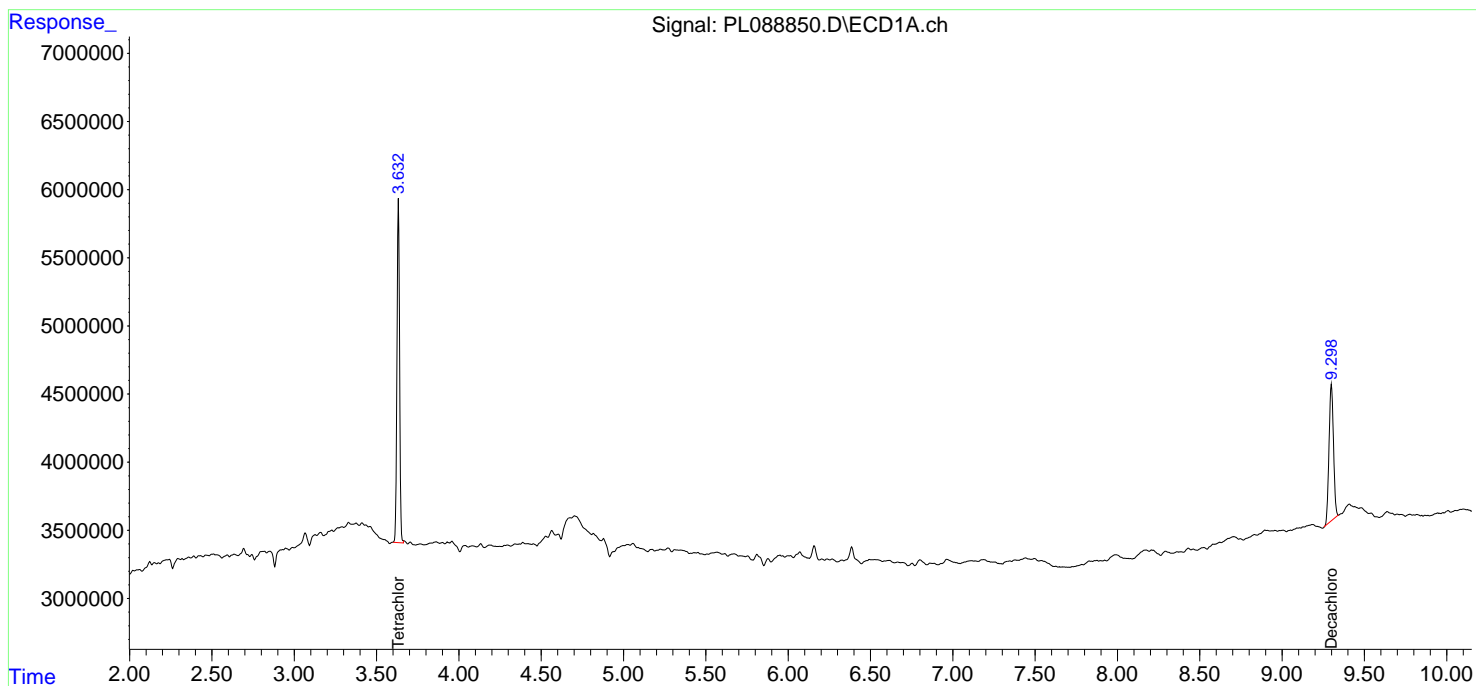
Instrument :
 ECD_L
 ClientSampleId :
 369

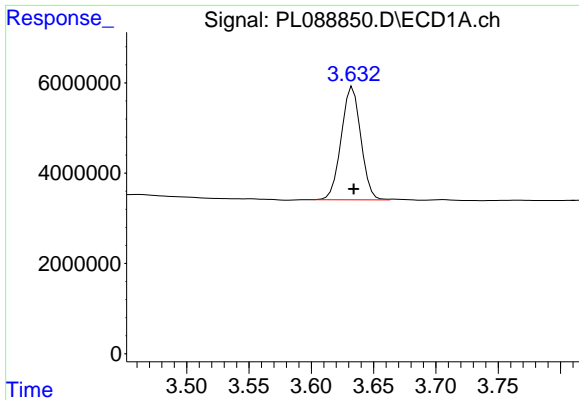
Manual Integrations
 APPROVED

Reviewed By :Abdul Mirza 04/02/2024
 Supervised By :Ankita Jodhani 04/02/2024

Integration File signal 1: autoint1.e
 Integration File signal 2: autoint2.e
 Quant Time: Apr 02 01:14:49 2024
 Quant Method : Z:\pestpcbsrv\HPCHEM1\ECD_L\methods\PL031324.M
 Quant Title : GC Extractables
 QLast Update : Wed Mar 13 15:45:55 2024
 Response via : Initial Calibration
 Integrator: ChemStation

Volume Inj. : 1 µl
 Signal #1 Phase : ZB-MR2 Signal #2 Phase: ZB-MR1
 Signal #1 Info : 30M x 0.32mm x0.2 Signal #2 Info : 30M x 0.32mm x0.5µm





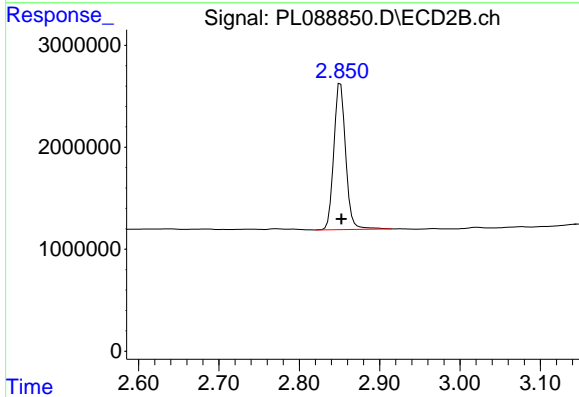
#1 Tetrachloro-m-xylene

R.T.: 3.632 min
 Delta R.T.: -0.002 min
 Response: 27544610
 Conc: 10.39 ng/ml

Instrument :
 ECD_L
 ClientSampleId :
 369

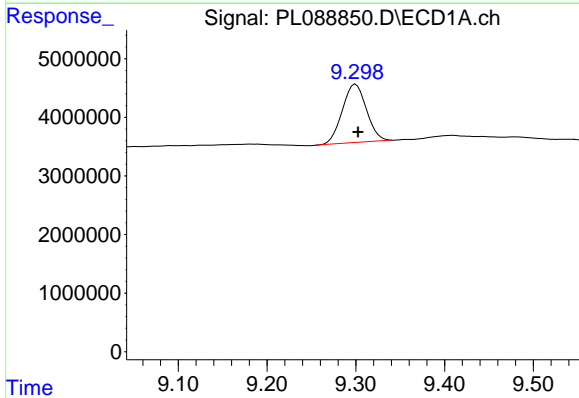
Manual Integrations
 APPROVED

Reviewed By :Abdul Mirza 04/02/2024
 Supervised By :Ankita Jodhani 04/02/2024



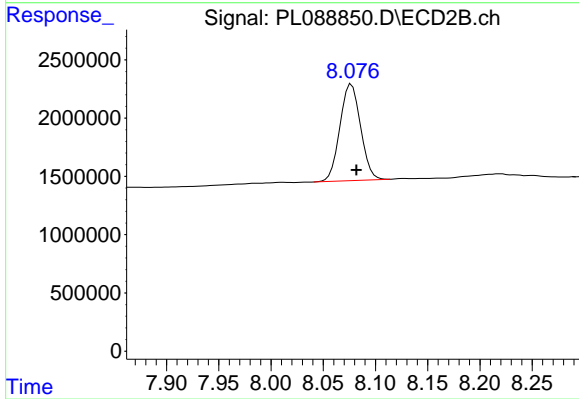
#1 Tetrachloro-m-xylene

R.T.: 2.850 min
 Delta R.T.: -0.002 min
 Response: 14703716
 Conc: 11.03 ng/ml m



#28 Decachlorobiphenyl

R.T.: 9.298 min
 Delta R.T.: -0.004 min
 Response: 18783157
 Conc: 7.60 ng/ml m



#28 Decachlorobiphenyl

R.T.: 8.077 min
 Delta R.T.: -0.005 min
 Response: 11386774
 Conc: 8.40 ng/ml