

Data Path : Z:\pestpcbsrv\HPCHEM1\ECD_L\Data\PL040219\
 Data File : PL046941.D
 Signal(s) : Signal #1: ECD1A.ch Signal #2: ECD2B.ch
 Acq On : 03 Apr 2019 01:46
 Operator : AJ\SJ
 Sample : I.BLK
 Misc :
 ALS Vial : 2 Sample Multiplier: 1

Instrument :
 ECD_L
 ClientSampleID :
 I.BLK

Integration File signal 1: autoint1.e
 Integration File signal 2: autoint2.e
 Quant Time: Apr 03 05:33:44 2019
 Quant Method : Z:\pestpcbsrv\HPCHEM1\ECD_L\methods\PL032219.M
 Quant Title : GC Extractables
 QLast Update : Fri Mar 22 13:40:08 2019
 Response via : Initial Calibration
 Integrator: ChemStation

Volume Inj. : 1 µl
 Signal #1 Phase : ZB-MR2 Signal #2 Phase: ZB-MR1
 Signal #1 Info : 30M x 0.32mm x0.2 Signal #2 Info : 30M x 0.32mm x0.5µm

Compound	RT#1	RT#2	Resp#1	Resp#2	ng/ml	ng/ml

System Monitoring Compounds						
1) SA Tetrachlo...	3.358	3.977	149.6E6	48050523	20.562	20.986
28) SA Decachlor...	8.035	9.030	166.9E6	52669956	19.848	22.718
Target Compounds						
2) A alpha-BHC	3.794	0.000	9319271	0	0.799	N.D. #
8) B Heptachlo...	0.000	5.843	0	7151542	N.D.	2.712 #

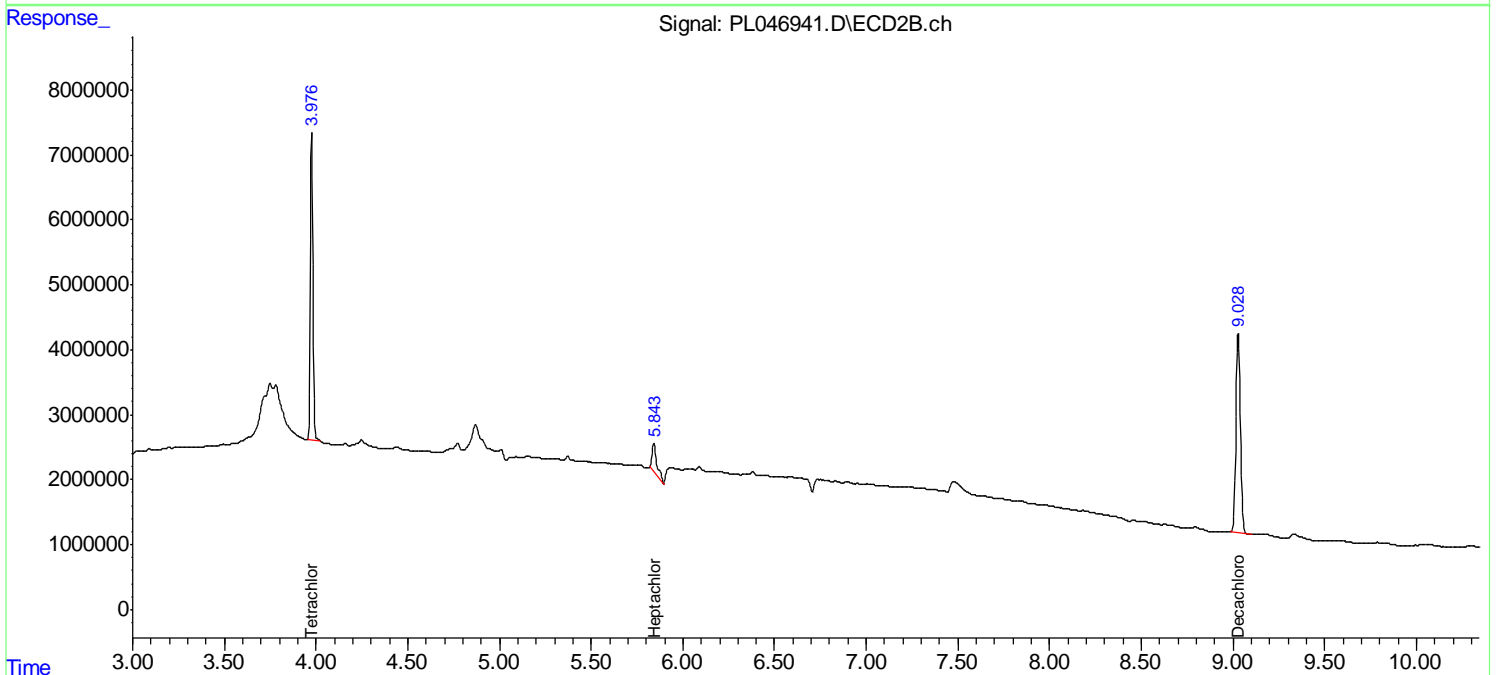
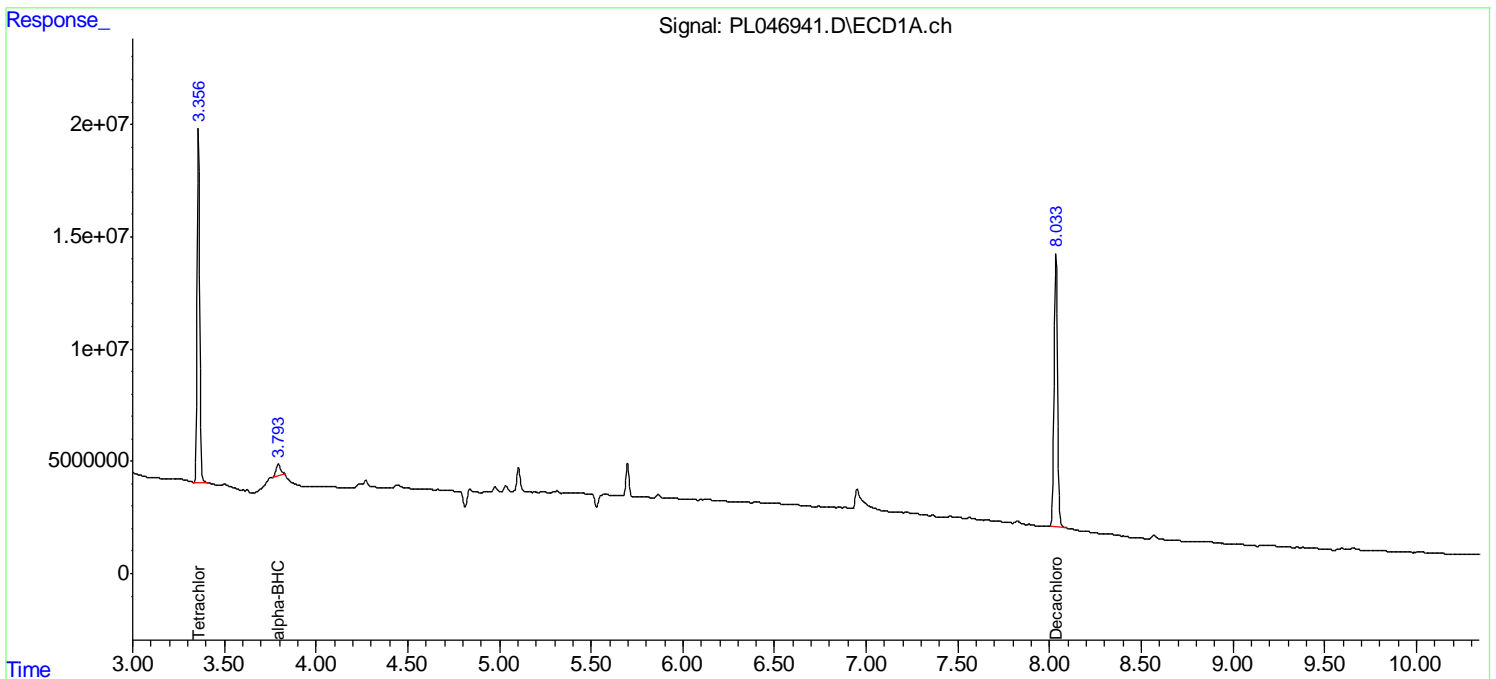
(f)=RT Delta > 1/2 Window (#)=Amounts differ by > 25% (m)=manual int.

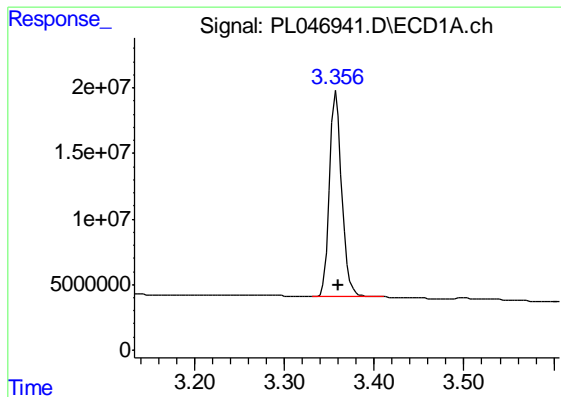
Data Path : Z:\pestpcbsrv\HPCHEM1\ECD_L\Data\PL040219\
 Data File : PL046941.D
 Signal(s) : Signal #1: ECD1A.ch Signal #2: ECD2B.ch
 Acq On : 03 Apr 2019 01:46
 Operator : AJ\SJ
 Sample : I.BLK
 Misc :
 ALS Vial : 2 Sample Multiplier: 1

Instrument :
 ECD_L
 ClientSampleId :
 I.BLK

Integration File signal 1: autoint1.e
 Integration File signal 2: autoint2.e
 Quant Time: Apr 03 05:33:44 2019
 Quant Method : Z:\pestpcbsrv\HPCHEM1\ECD_L\methods\PL032219.M
 Quant Title : GC Extractables
 QLast Update : Fri Mar 22 13:40:08 2019
 Response via : Initial Calibration
 Integrator: ChemStation

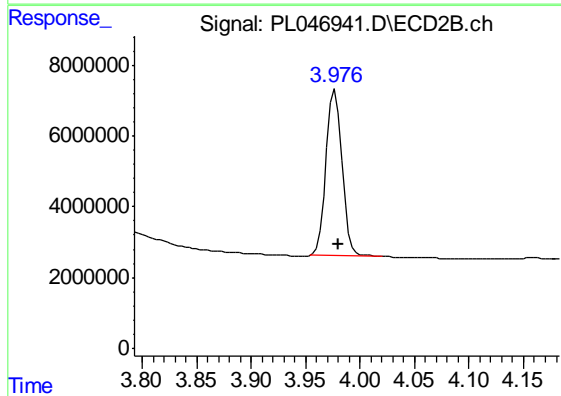
Volume Inj. : 1 µl
 Signal #1 Phase : ZB-MR2 Signal #2 Phase: ZB-MR1
 Signal #1 Info : 30M x 0.32mm x0.2 Signal #2 Info : 30M x 0.32mm x0.5µm



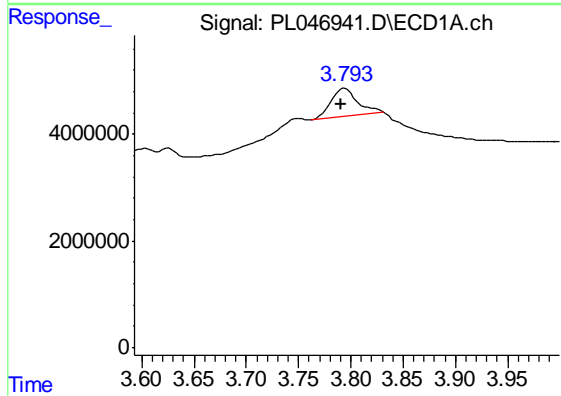


#1 Tetrachloro-m-xylene
 R.T.: 3.358 min
 Delta R.T.: -0.003 min
 Response: 149583731
 Conc: 20.56 ng/ml

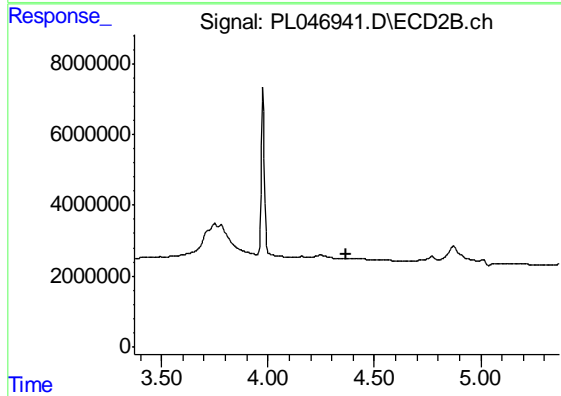
Instrument :
 ECD_L
 ClientSampled :
 I.BLK



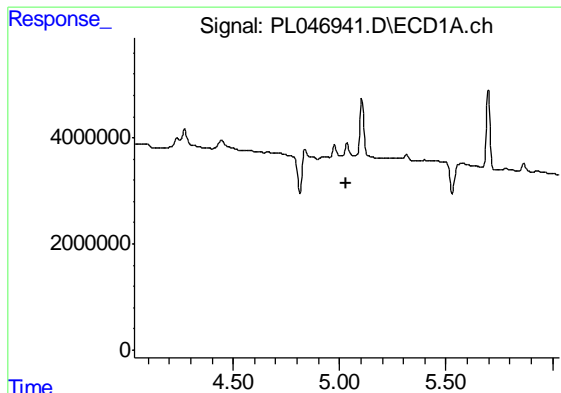
#1 Tetrachloro-m-xylene
 R.T.: 3.977 min
 Delta R.T.: -0.004 min
 Response: 48050523
 Conc: 20.99 ng/ml



#2 alpha-BHC
 R.T.: 3.794 min
 Delta R.T.: 0.004 min
 Response: 9319271
 Conc: 0.80 ng/ml



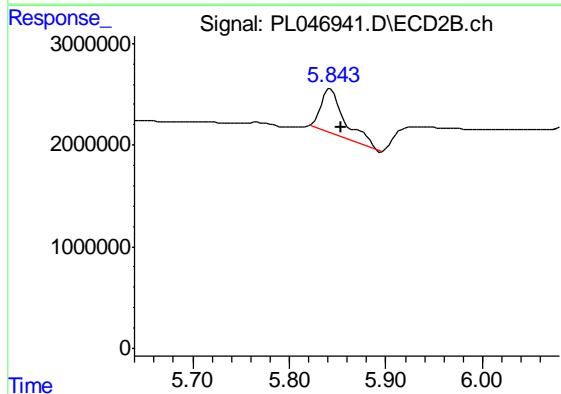
#2 alpha-BHC
 R.T.: 0.000 min
 Exp R.T. : 4.371 min
 Response: 0
 Conc: N.D.



#8 Heptachlor epoxide

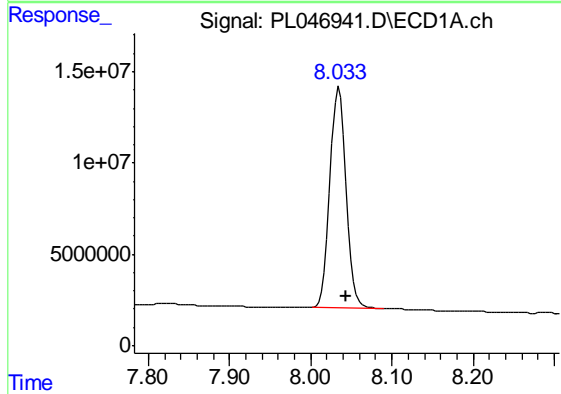
R.T.: 0.000 min
 Exp R.T. : 5.034 min
 Response: 0
 Conc: N.D.

Instrument :
 ECD_L
 ClientSampleId :
 I.BLK



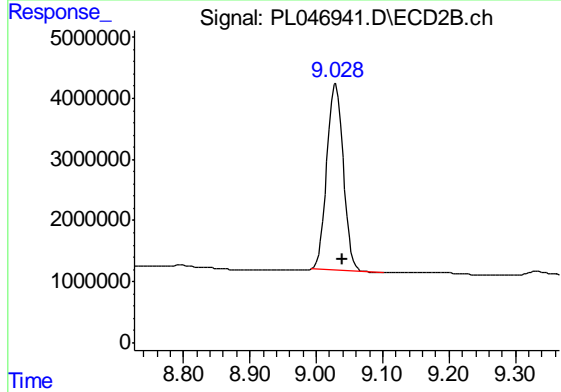
#8 Heptachlor epoxide

R.T.: 5.843 min
 Delta R.T.: -0.010 min
 Response: 7151542
 Conc: 2.71 ng/ml



#28 Decachlorobiphenyl

R.T.: 8.035 min
 Delta R.T.: -0.009 min
 Response: 166942995
 Conc: 19.85 ng/ml



#28 Decachlorobiphenyl

R.T.: 9.030 min
 Delta R.T.: -0.010 min
 Response: 52669956
 Conc: 22.72 ng/ml