

Data Path : Z:\pestpcbsrv\HPCHEM1\ECD_L\Data\PL040219\
 Data File : PL046934.D
 Signal(s) : Signal #1: ECD1A.ch Signal #2: ECD2B.ch
 Acq On : 03 Apr 2019 00:05
 Operator : AJ\SJ
 Sample : K2182-10
 Misc :
 ALS Vial : 52 Sample Multiplier: 1

Instrument :
 ECD_L
 ClientSampleId :
 S7C(12-20)COMP

Integration File signal 1: autoint1.e
 Integration File signal 2: autoint2.e
 Quant Time: Apr 03 01:24:35 2019
 Quant Method : Z:\pestpcbsrv\HPCHEM1\ECD_L\methods\PL032219.M
 Quant Title : GC Extractables
 QLast Update : Fri Mar 22 13:40:08 2019
 Response via : Initial Calibration
 Integrator: ChemStation

Volume Inj. : 1 µl
 Signal #1 Phase : ZB-MR2 Signal #2 Phase: ZB-MR1
 Signal #1 Info : 30M x 0.32mm x0.2 Signal #2 Info : 30M x 0.32mm x0.5µm

Compound	RT#1	RT#2	Resp#1	Resp#2	ng/ml	ng/ml

System Monitoring Compounds						
1) SA Tetrachlo...	3.358	3.977	144.9E6	47459837	19.914	20.728
28) SA Decachlor...	8.034	9.029	174.3E6	51446276	20.721	22.190

Target Compounds

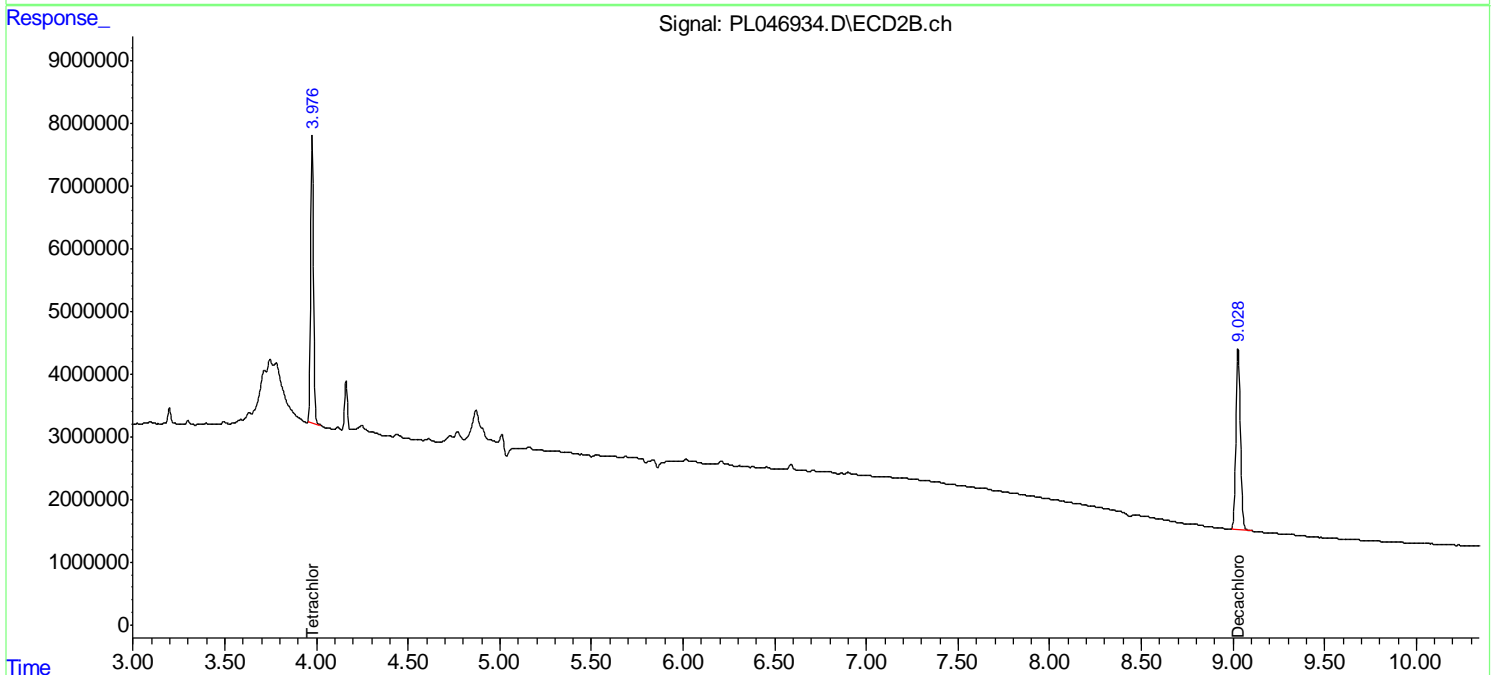
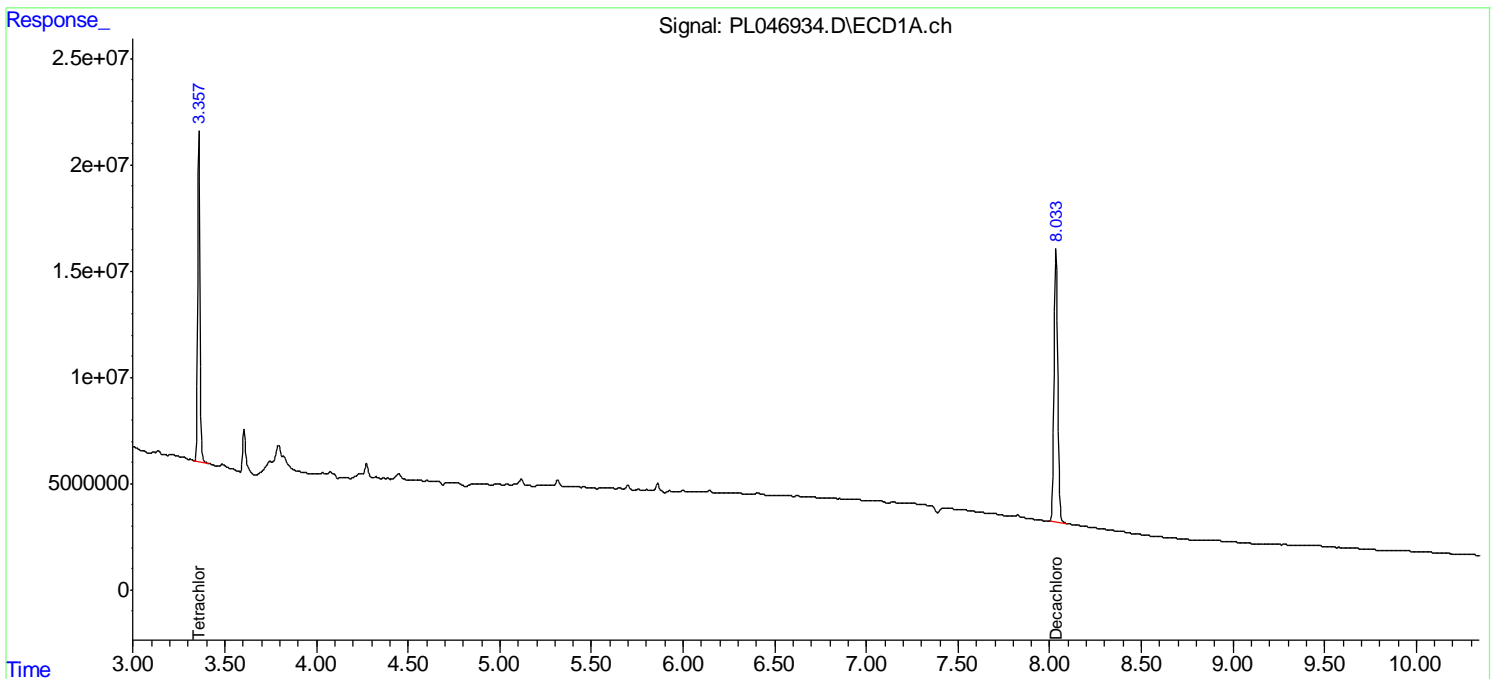
(f)=RT Delta > 1/2 Window (#)=Amounts differ by > 25% (m)=manual int.

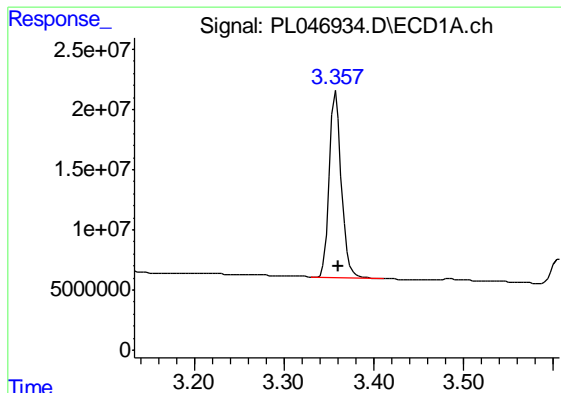
Data Path : Z:\pestpcbsrv\HPCHEM1\ECD_L\Data\PL040219\
 Data File : PL046934.D
 Signal(s) : Signal #1: ECD1A.ch Signal #2: ECD2B.ch
 Acq On : 03 Apr 2019 00:05
 Operator : AJ\SJ
 Sample : K2182-10
 Misc :
 ALS Vial : 52 Sample Multiplier: 1

Instrument :
 ECD_L
ClientSampleId :
 STC(12-20)COMP

Integration File signal 1: autoint1.e
 Integration File signal 2: autoint2.e
 Quant Time: Apr 03 01:24:35 2019
 Quant Method : Z:\pestpcbsrv\HPCHEM1\ECD_L\methods\PL032219.M
 Quant Title : GC Extractables
 QLast Update : Fri Mar 22 13:40:08 2019
 Response via : Initial Calibration
 Integrator: ChemStation

Volume Inj. : 1 µl
 Signal #1 Phase : ZB-MR2 Signal #2 Phase: ZB-MR1
 Signal #1 Info : 30M x 0.32mm x0.2 Signal #2 Info : 30M x 0.32mm x0.5µm

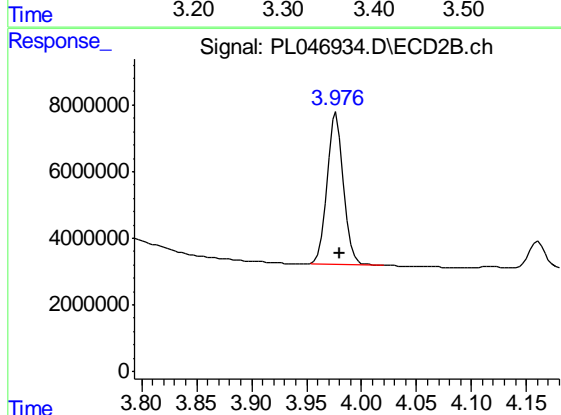




#1 Tetrachloro-m-xylene

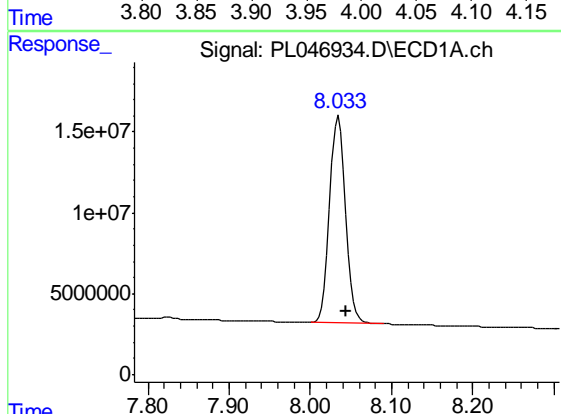
R.T.: 3.358 min
 Delta R.T.: -0.003 min
 Response: 144864917
 Conc: 19.91 ng/ml

Instrument :
 ECD_L
 ClientSampleId :
 STC(12-20)COMP



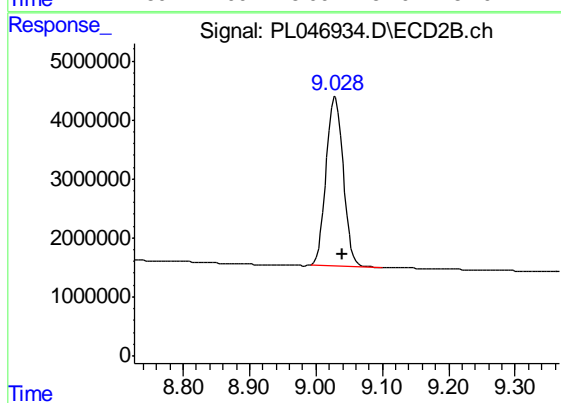
#1 Tetrachloro-m-xylene

R.T.: 3.977 min
 Delta R.T.: -0.003 min
 Response: 47459837
 Conc: 20.73 ng/ml



#28 Decachlorobiphenyl

R.T.: 8.034 min
 Delta R.T.: -0.010 min
 Response: 174287686
 Conc: 20.72 ng/ml



#28 Decachlorobiphenyl

R.T.: 9.029 min
 Delta R.T.: -0.010 min
 Response: 51446276
 Conc: 22.19 ng/ml