

Data Path : Z:\pestpcbsrv\HPCHEM1\ECD\_L\Data\PL040220\  
 Data File : PL057739.D  
 Signal(s) : Signal #1: ECD1A.ch Signal #2: ECD2B.ch  
 Acq On : 02 Apr 2020 17:12  
 Operator : AJ\MA  
 Sample : L2129-26  
 Misc :  
 ALS Vial : 12 Sample Multiplier: 1

Instrument :  
 ECD\_L  
 ClientSampleId :  
 TP-2

Integration File signal 1: autoint1.e  
 Integration File signal 2: autoint2.e  
 Quant Time: Apr 03 00:58:41 2020  
 Quant Method : Z:\pestpcbsrv\HPCHEM1\ECD\_L\methods\PL031420.M  
 Quant Title : GC Extractables  
 QLast Update : Mon Mar 16 09:40:37 2020  
 Response via : Initial Calibration  
 Integrator: ChemStation

Volume Inj. : 1 µl  
 Signal #1 Phase : ZB-MR2 Signal #2 Phase: ZB-MR1  
 Signal #1 Info : 30M x 0.32mm x0.2 Signal #2 Info : 30M x 0.32mm x0.5µm

Compound	RT#1	RT#2	Resp#1	Resp#2	ng/ml	ng/ml
-----						
System Monitoring Compounds						
1) SA Tetrachlo...	3.458	3.957	247.3E6	52377909	26.681	24.142
28) SA Decachlor...	8.208	8.982	187.0E6	43977540	17.672	19.833

Target Compounds

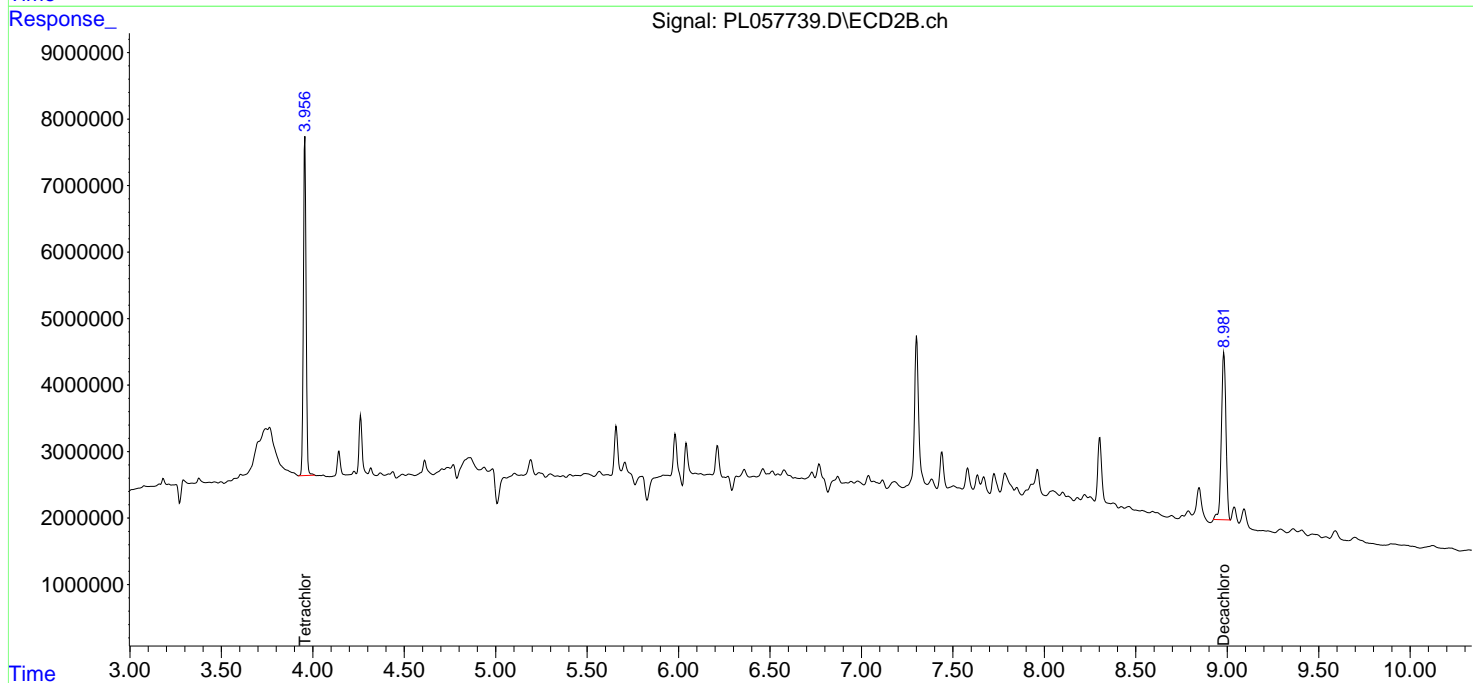
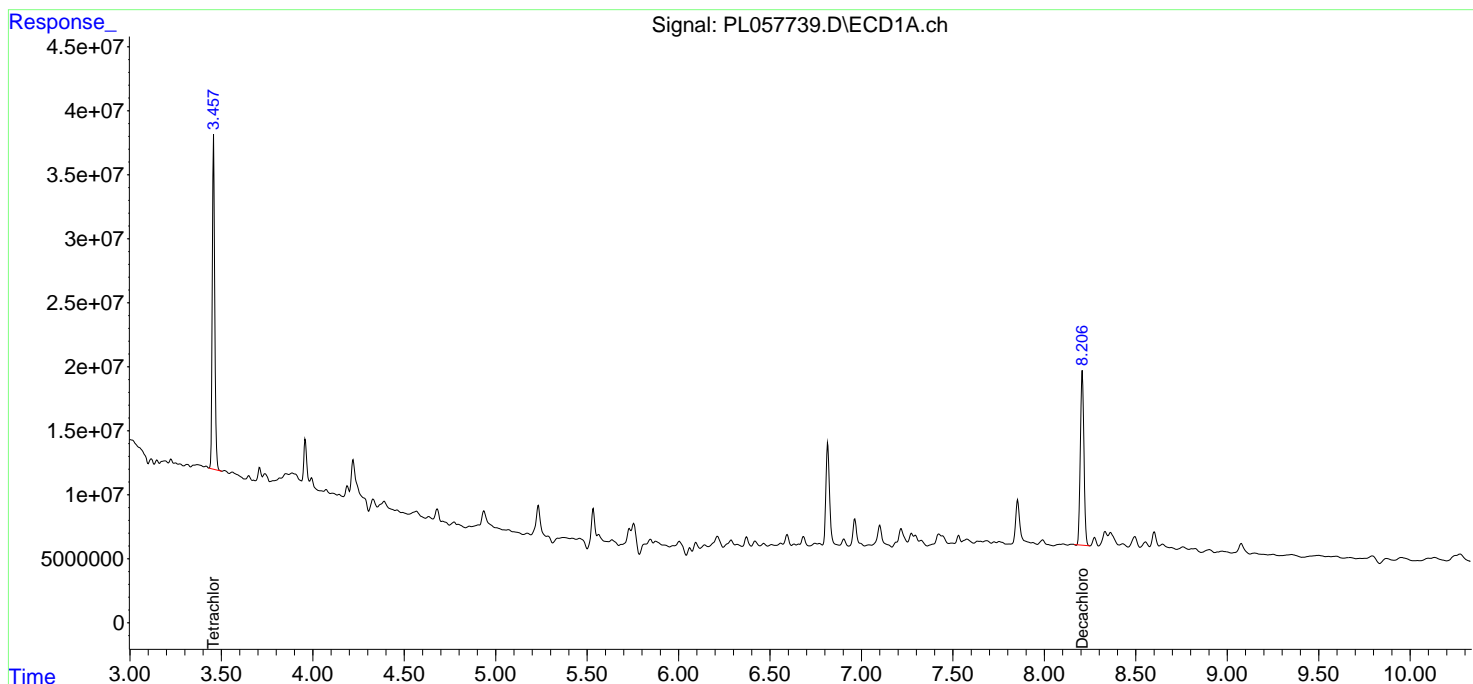
(f)=RT Delta > 1/2 Window (#)=Amounts differ by > 25% (m)=manual int.

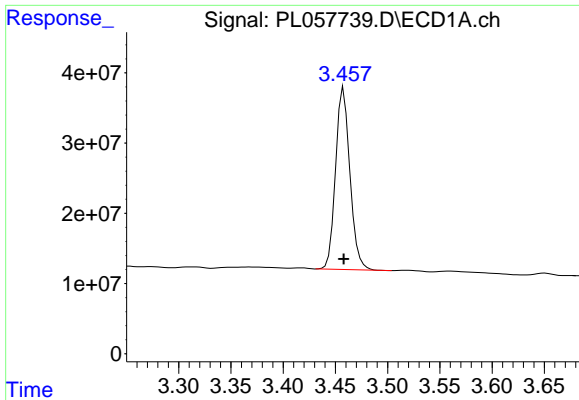
Data Path : Z:\pestpcbsrv\HPCHEM1\ECD\_L\Data\PL040220\  
 Data File : PL057739.D  
 Signal(s) : Signal #1: ECD1A.ch Signal #2: ECD2B.ch  
 Acq On : 02 Apr 2020 17:12  
 Operator : AJ\MA  
 Sample : L2129-26  
 Misc :  
 ALS Vial : 12 Sample Multiplier: 1

Instrument :  
 ECD\_L  
 ClientSampleId :  
 TP-2

Integration File signal 1: autoint1.e  
 Integration File signal 2: autoint2.e  
 Quant Time: Apr 03 00:58:41 2020  
 Quant Method : Z:\pestpcbsrv\HPCHEM1\ECD\_L\methods\PL031420.M  
 Quant Title : GC Extractables  
 QLast Update : Mon Mar 16 09:40:37 2020  
 Response via : Initial Calibration  
 Integrator: ChemStation

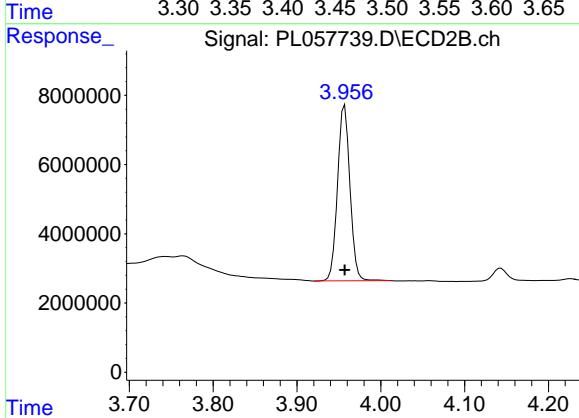
Volume Inj. : 1 µl  
 Signal #1 Phase : ZB-MR2 Signal #2 Phase: ZB-MR1  
 Signal #1 Info : 30M x 0.32mm x0.2 Signal #2 Info : 30M x 0.32mm x0.5µm



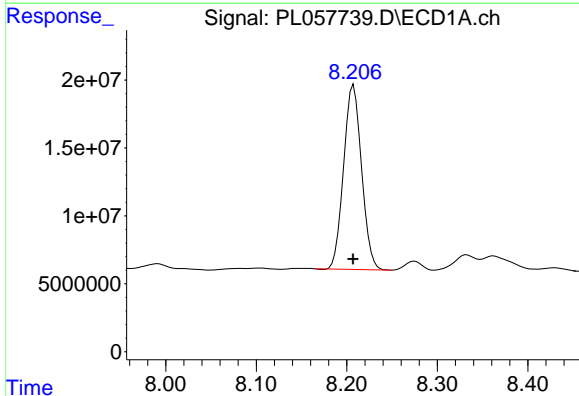


#1 Tetrachloro-m-xylene  
 R.T.: 3.458 min  
 Delta R.T.: 0.000 min  
 Response: 247316823  
 Conc: 26.68 ng/ml

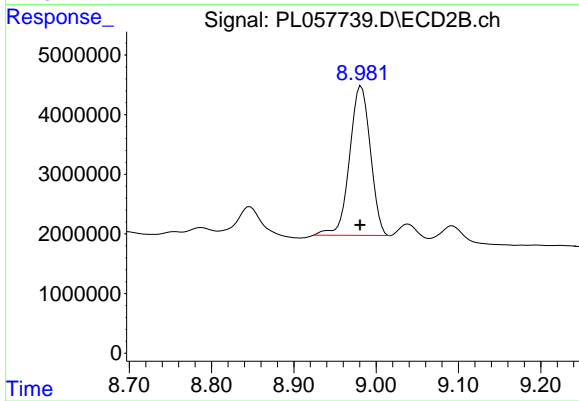
Instrument :  
 ECD\_L  
 ClientSampled :  
 TP-2



#1 Tetrachloro-m-xylene  
 R.T.: 3.957 min  
 Delta R.T.: 0.000 min  
 Response: 52377909  
 Conc: 24.14 ng/ml



#28 Decachlorobiphenyl  
 R.T.: 8.208 min  
 Delta R.T.: 0.000 min  
 Response: 186997094  
 Conc: 17.67 ng/ml



#28 Decachlorobiphenyl  
 R.T.: 8.982 min  
 Delta R.T.: 0.002 min  
 Response: 43977540  
 Conc: 19.83 ng/ml