

Data Path : Z:\pestpcbsrv\HPCHEM1\ECD_L\Data\PL040320\
 Data File : PL057758.D
 Signal(s) : Signal #1: ECD1A.ch Signal #2: ECD2B.ch
 Acq On : 03 Apr 2020 11:00
 Operator : AJ\MA
 Sample : PSTDICC075
 Misc :
 ALS Vial : 6 Sample Multiplier: 1

Instrument :
 ECD_L
 ClientSampleId :
 PSTDICC075

Integration File signal 1: autoint1.e
 Integration File signal 2: autoint2.e
 Quant Time: Apr 04 05:50:38 2020
 Quant Method : Z:\pestpcbsrv\HPCHEM1\ECD_L\methods\PL040320.M
 Quant Title : GC Extractables
 QLast Update : Sat Apr 04 05:31:17 2020
 Response via : Initial Calibration
 Integrator: ChemStation

Volume Inj. : 1 µl
 Signal #1 Phase : ZB-MR1 Signal #2 Phase: ZB-MR1
 Signal #1 Info : 30M x 0.32mm x0.2 Signal #2 Info : 30M x 0.32mm x0.5µm

	Compound	RT#1	RT#2	Resp#1	Resp#2	ng/ml	ng/ml

System Monitoring Compounds							
1)	SA Tetrachlo...	3.458	3.957	774.2E6	165.4E6	73.949	73.651
28)	SA Decachlor...	8.206	8.981	756.5E6	162.2E6	72.498	71.993
Target Compounds							
2)	A alpha-BHC	3.895	4.345	1355.3E6	265.8E6	73.896	76.184
3)	MA gamma-BHC...	4.179	4.627	1205.1E6	258.3E6	74.876	75.406
4)	MA Heptachlor	4.479	5.129	1244.3E6	260.1E6	73.491	74.643
5)	MB Aldrin	4.727	5.431	1165.4E6	254.7E6	74.197	75.326
6)	B beta-BHC	4.431	4.800	480.7E6	109.1E6	73.437	74.010
7)	B delta-BHC	4.634	5.014	1211.4E6	197.4E6	74.329	77.182
8)	B Heptachlo...	5.170	5.815	1042.7E6	212.0E6	73.530	74.246
9)	A Endosulfan I	5.508	6.170	962.2E6	227.7E6	73.924	74.365
10)	B gamma-Chl...	5.397	6.049	1063.2E6	249.3E6	74.135	74.541
11)	B alpha-Chl...	5.454	6.121	1038.2E6	250.3E6	73.867	74.241
12)	B 4,4'-DDE	5.619	6.280	1028.3E6	234.1E6	74.147	75.708
13)	MA Dieldrin	5.751	6.426	1031.1E6	238.9E6	74.394	75.284
14)	MA Endrin	6.008	6.642	918.4E6	194.8E6	74.297	74.892
15)	B Endosulfa...	6.281	6.853	859.8E6	194.6E6	74.495	74.135
16)	A 4,4'-DDD	6.133	6.768	802.9E6	180.7E6	75.505	75.490
17)	MA 4,4'-DDT	6.374	7.065	832.8E6	177.3E6	76.205	75.758
18)	B Endrin al...	6.450	6.976	721.6E6	166.0E6	74.512	73.445
19)	B Endosulfa...	6.662	7.198	793.1E6	179.0E6	73.762	73.642
20)	A Methoxychlor	6.920	7.525	419.2E6	95282112	75.298	72.713
21)	B Endrin ke...	7.153	7.667	876.8E6	188.2E6	74.597	73.850
22)	Mirex	7.340	8.117	613.9E6	134.3E6	73.417	72.016

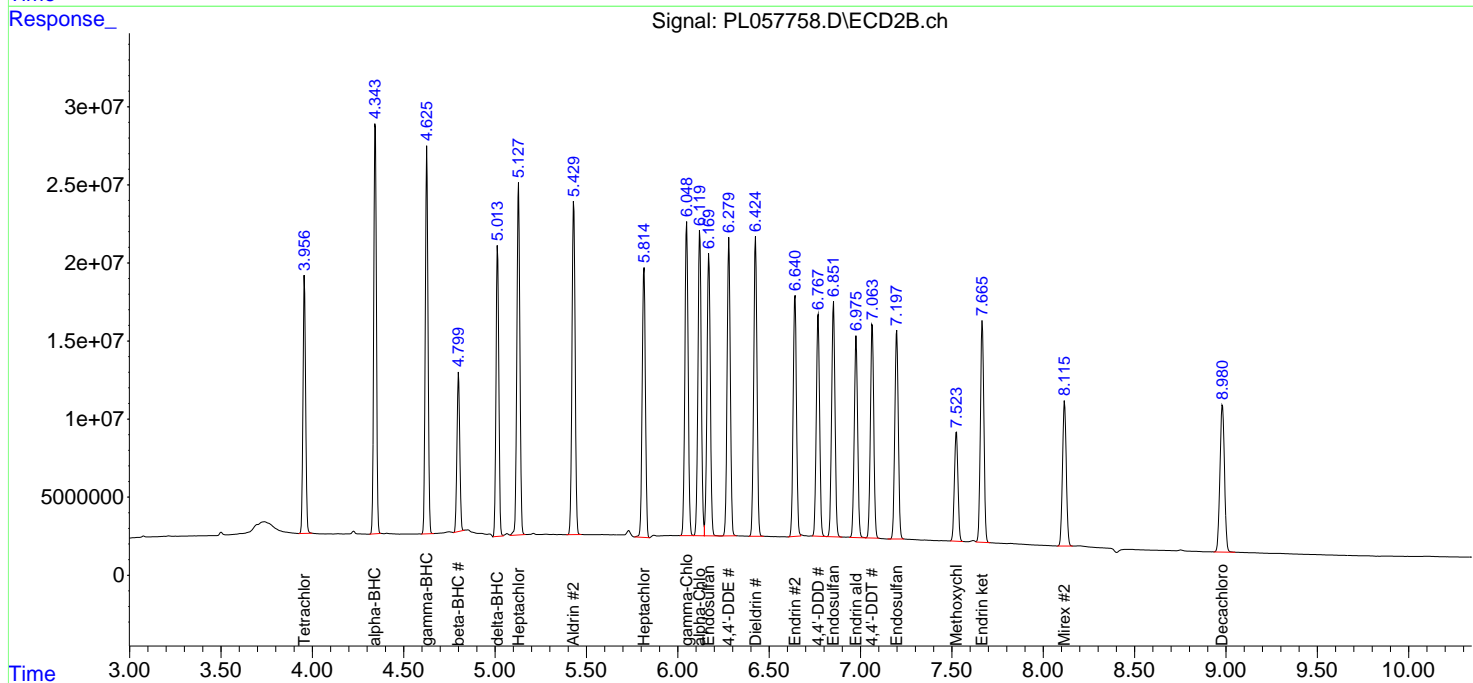
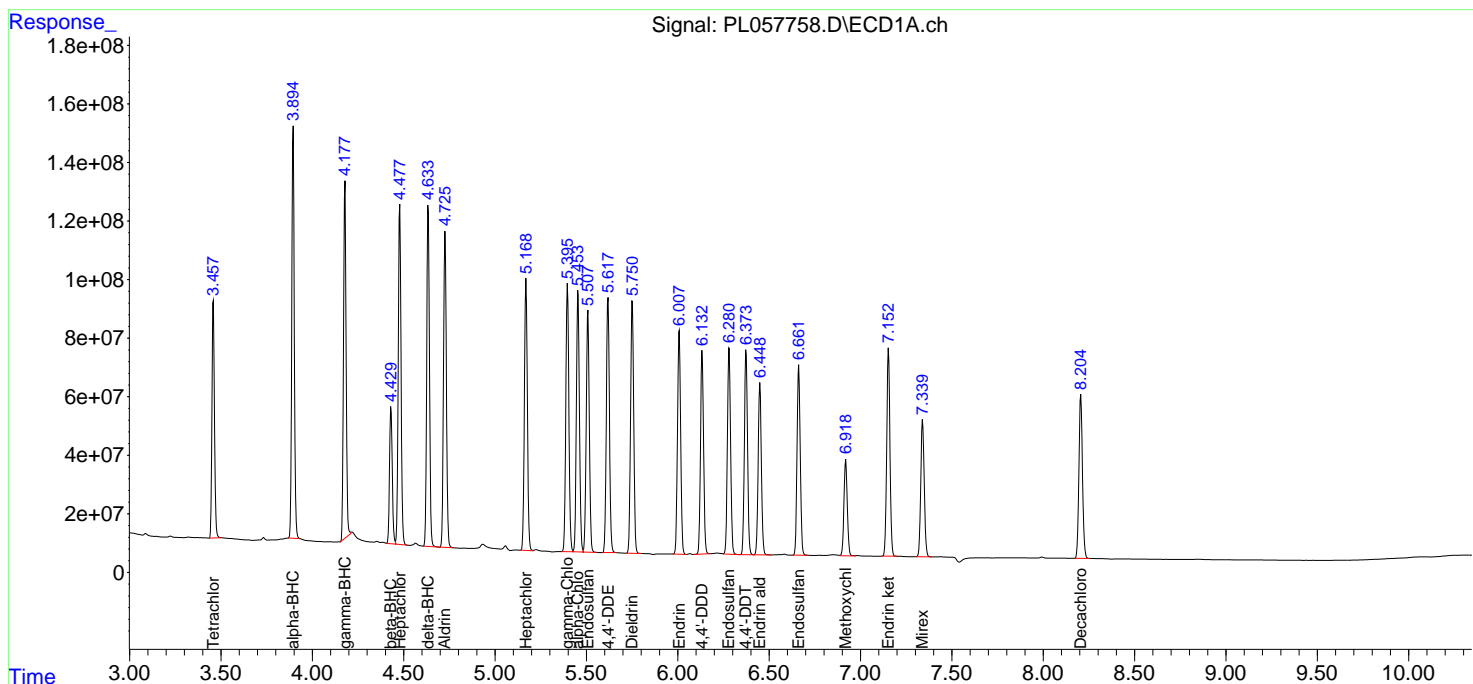
(f)=RT Delta > 1/2 Window (#)=Amounts differ by > 25% (m)=manual int.

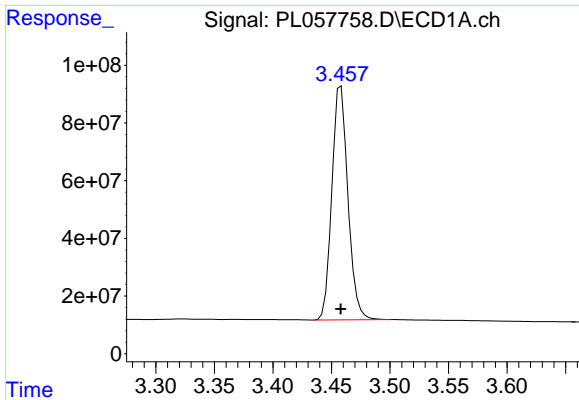
Data Path : Z:\pestpcbsrv\HPCHEM1\ECD_L\Data\PL040320\
 Data File : PL057758.D
 Signal(s) : Signal #1: ECD1A.ch Signal #2: ECD2B.ch
 Acq On : 03 Apr 2020 11:00
 Operator : AJ\MA
 Sample : PSTDICC075
 Misc :
 ALS Vial : 6 Sample Multiplier: 1

Instrument :
 ECD_L
 ClientSampled :
 PSTDICC075

Integration File signal 1: autoint1.e
 Integration File signal 2: autoint2.e
 Quant Time: Apr 04 05:50:38 2020
 Quant Method : Z:\pestpcbsrv\HPCHEM1\ECD_L\methods\PL040320.M
 Quant Title : GC Extractables
 QLast Update : Sat Apr 04 05:31:17 2020
 Response via : Initial Calibration
 Integrator: ChemStation

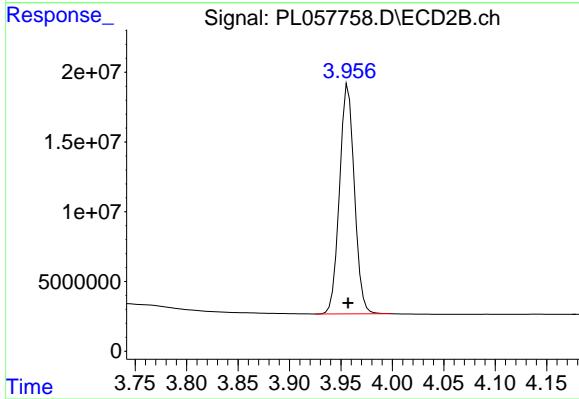
Volume Inj. : 1 µl
 Signal #1 Phase : ZB-MR2 Signal #2 Phase: ZB-MR1
 Signal #1 Info : 30M x 0.32mm x0.2 Signal #2 Info : 30M x 0.32mm x0.5µm



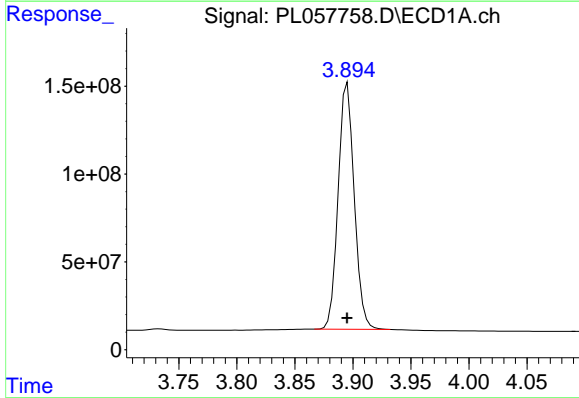


#1 Tetrachloro-m-xylene
 R.T.: 3.458 min
 Delta R.T.: 0.000 min
 Response: 774214094
 Conc: 73.95 ng/ml

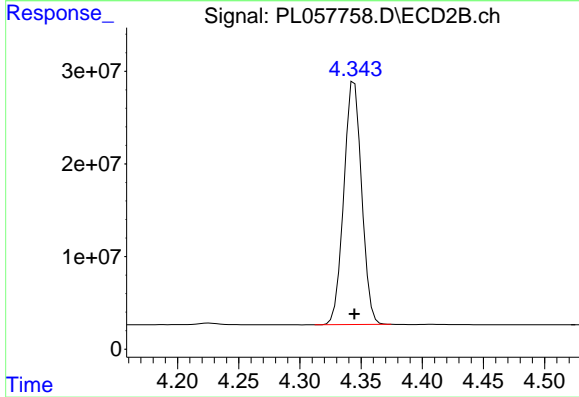
Instrument :
 ECD_L
 ClientSampleId :
 PSTDICC075



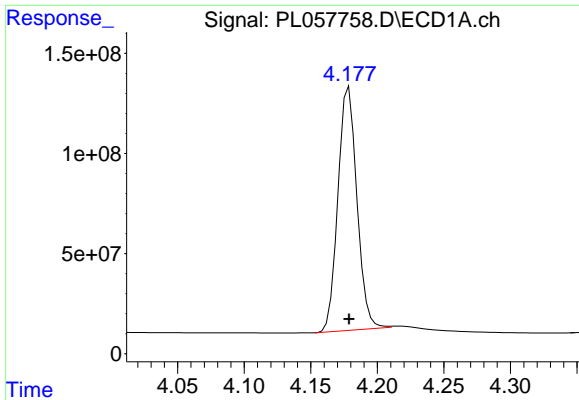
#1 Tetrachloro-m-xylene
 R.T.: 3.957 min
 Delta R.T.: 0.000 min
 Response: 165390832
 Conc: 73.65 ng/ml



#2 alpha-BHC
 R.T.: 3.895 min
 Delta R.T.: 0.000 min
 Response: 1355333287
 Conc: 73.90 ng/ml

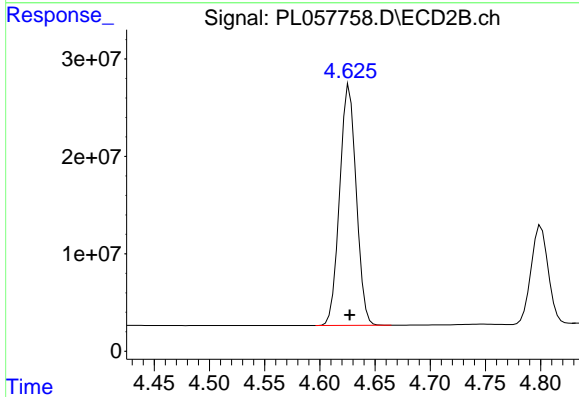


#2 alpha-BHC
 R.T.: 4.345 min
 Delta R.T.: 0.000 min
 Response: 265750148
 Conc: 76.18 ng/ml

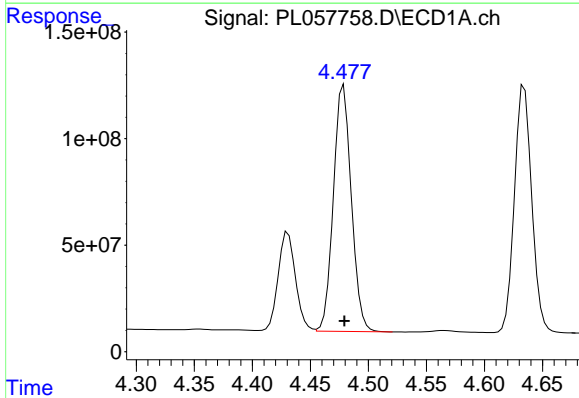


#3 gamma-BHC (Lindane)
 R.T.: 4.179 min
 Delta R.T.: 0.000 min
 Response: 1205076954
 Conc: 74.88 ng/ml

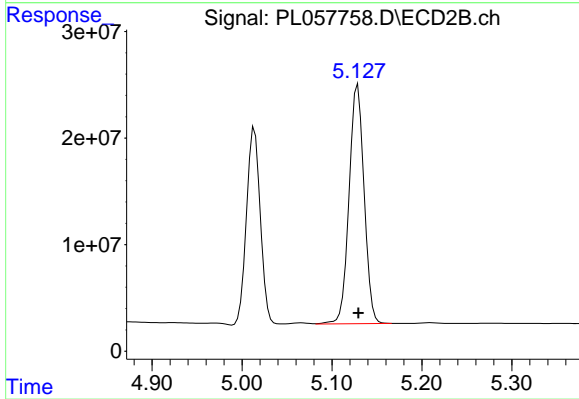
Instrument :
 ECD_L
 ClientSampleId :
 PSTDICC075



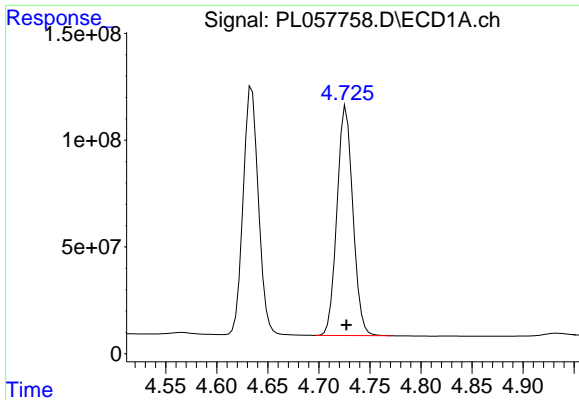
#3 gamma-BHC (Lindane)
 R.T.: 4.627 min
 Delta R.T.: 0.000 min
 Response: 258305118
 Conc: 75.41 ng/ml



#4 Heptachlor
 R.T.: 4.479 min
 Delta R.T.: 0.000 min
 Response: 1244335784
 Conc: 73.49 ng/ml

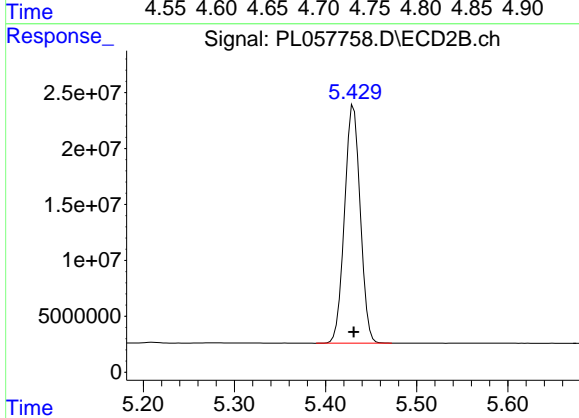


#4 Heptachlor
 R.T.: 5.129 min
 Delta R.T.: 0.000 min
 Response: 260117449
 Conc: 74.64 ng/ml

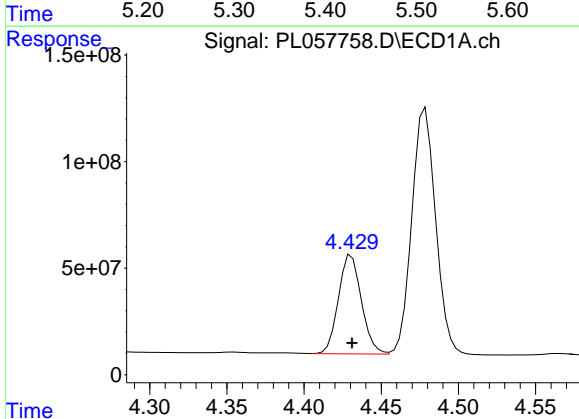


#5 Aldrin
 R.T.: 4.727 min
 Delta R.T.: 0.000 min
 Response: 1165427218
 Conc: 74.20 ng/ml

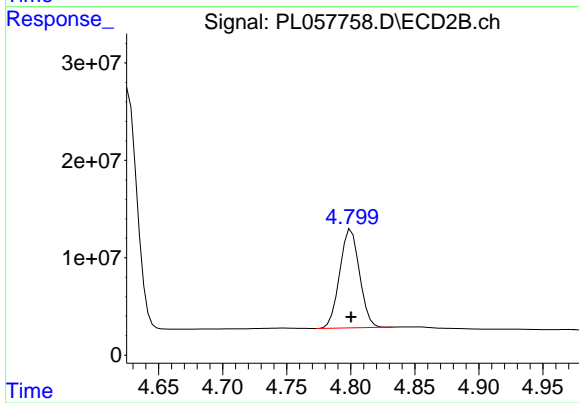
Instrument :
 ECD_L
 ClientSampled :
 PSTDICC075



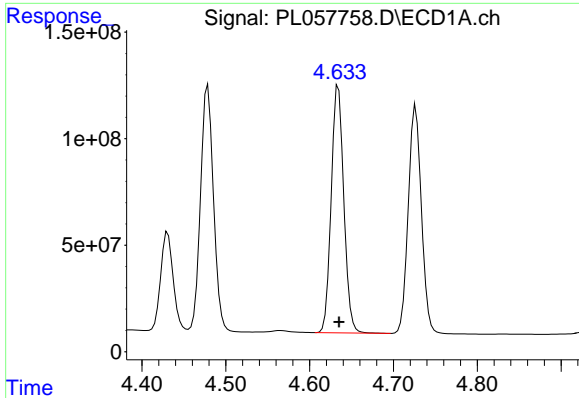
#5 Aldrin
 R.T.: 5.431 min
 Delta R.T.: 0.000 min
 Response: 254708138
 Conc: 75.33 ng/ml



#6 beta-BHC
 R.T.: 4.431 min
 Delta R.T.: 0.000 min
 Response: 480731633
 Conc: 73.44 ng/ml

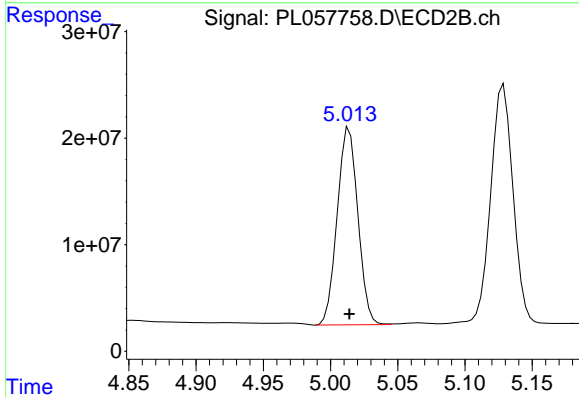


#6 beta-BHC
 R.T.: 4.800 min
 Delta R.T.: 0.000 min
 Response: 109110551
 Conc: 74.01 ng/ml

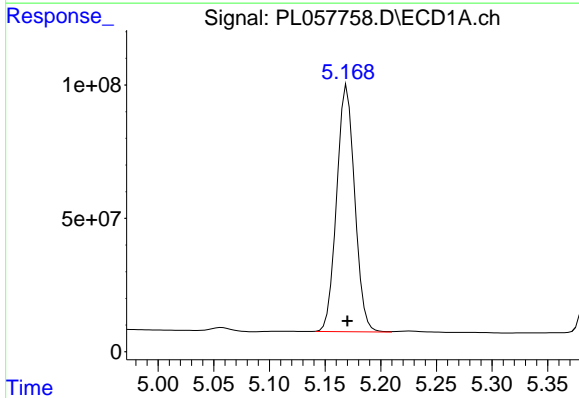


#7 delta-BHC
 R.T.: 4.634 min
 Delta R.T.: 0.000 min
 Response: 1211428356
 Conc: 74.33 ng/ml

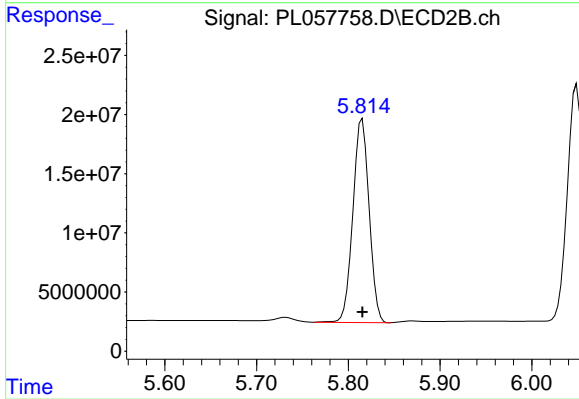
Instrument :
 ECD_L
 ClientSampleId :
 PSTDICC075



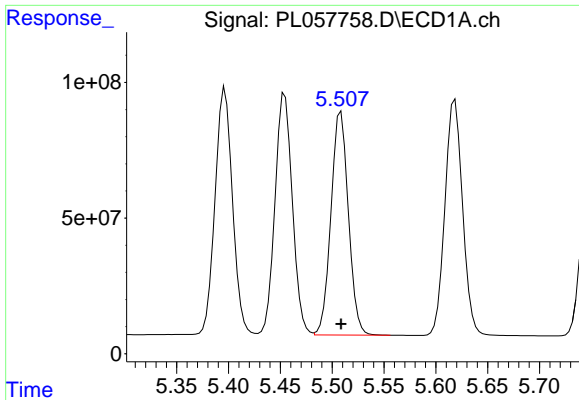
#7 delta-BHC
 R.T.: 5.014 min
 Delta R.T.: 0.000 min
 Response: 197402439
 Conc: 77.18 ng/ml



#8 Heptachlor epoxide
 R.T.: 5.170 min
 Delta R.T.: 0.000 min
 Response: 1042694958
 Conc: 73.53 ng/ml

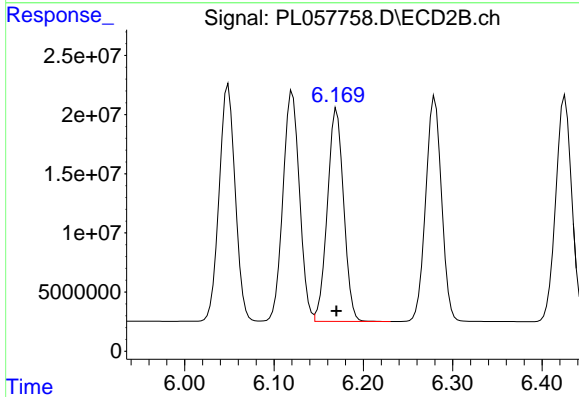


#8 Heptachlor epoxide
 R.T.: 5.815 min
 Delta R.T.: 0.000 min
 Response: 212031386
 Conc: 74.25 ng/ml

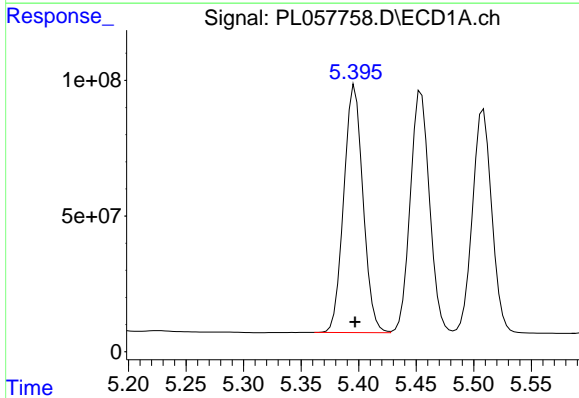


#9 Endosulfan I
 R.T.: 5.508 min
 Delta R.T.: 0.000 min
 Response: 962221378
 Conc: 73.92 ng/ml

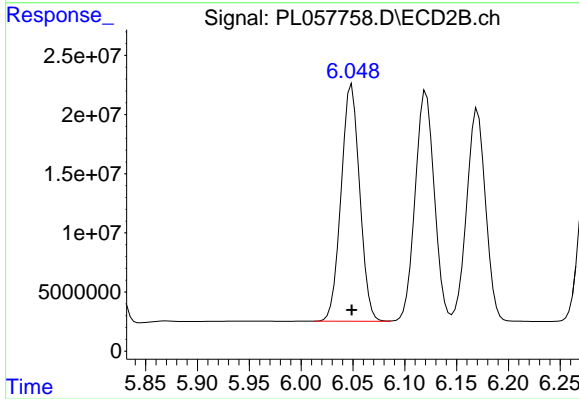
Instrument :
 ECD_L
 ClientSampleId :
 PSTDICC075



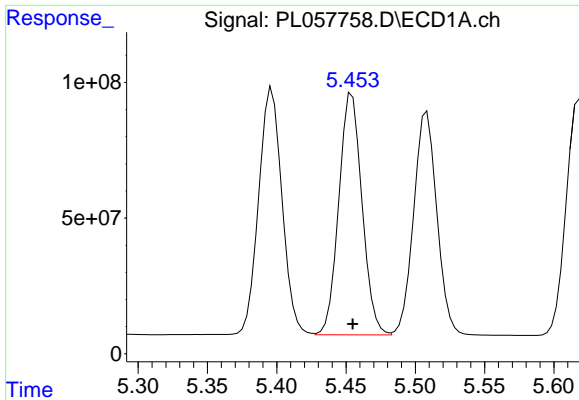
#9 Endosulfan I
 R.T.: 6.170 min
 Delta R.T.: 0.000 min
 Response: 227743014
 Conc: 74.36 ng/ml



#10 gamma-Chlordane
 R.T.: 5.397 min
 Delta R.T.: 0.000 min
 Response: 1063234489
 Conc: 74.14 ng/ml



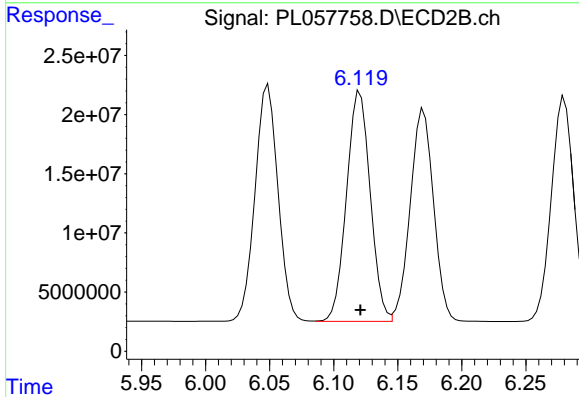
#10 gamma-Chlordane
 R.T.: 6.049 min
 Delta R.T.: 0.000 min
 Response: 249341886
 Conc: 74.54 ng/ml



#11 alpha-Chlordane

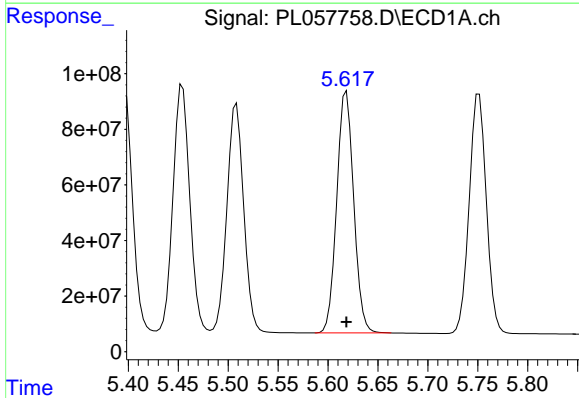
R.T.: 5.454 min
Delta R.T.: 0.000 min
Response: 1038237343
Conc: 73.87 ng/ml

Instrument :
ECD_L
ClientSampleId :
PSTDICC075



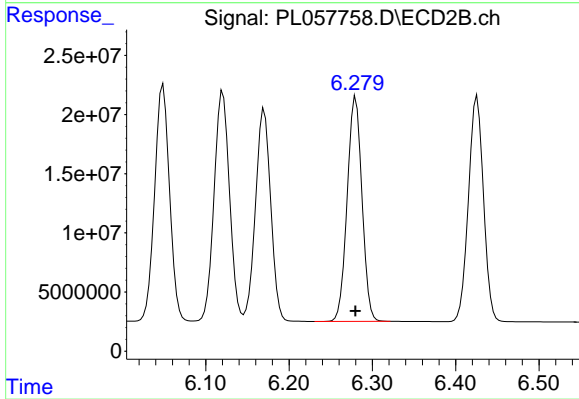
#11 alpha-Chlordane

R.T.: 6.121 min
Delta R.T.: 0.000 min
Response: 250281960
Conc: 74.24 ng/ml



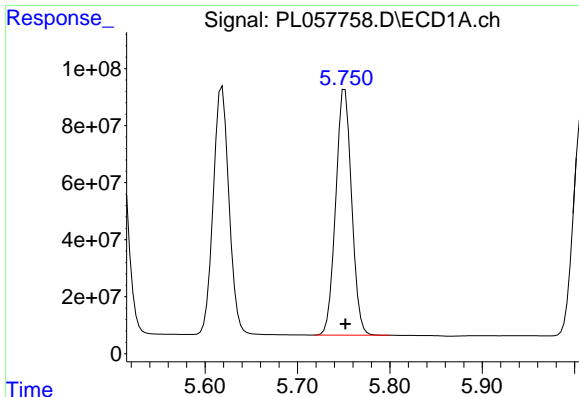
#12 4,4'-DDE

R.T.: 5.619 min
Delta R.T.: 0.000 min
Response: 1028252167
Conc: 74.15 ng/ml



#12 4,4'-DDE

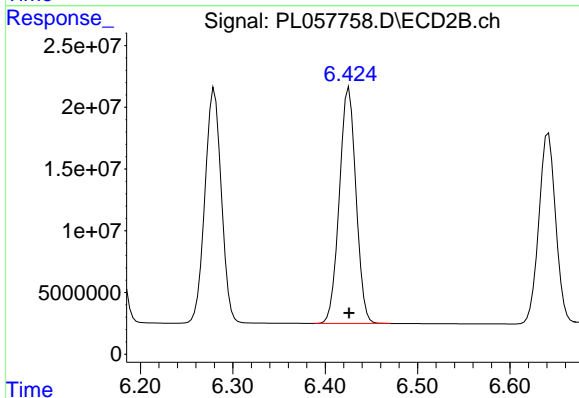
R.T.: 6.280 min
Delta R.T.: 0.000 min
Response: 234093750
Conc: 75.71 ng/ml



#13 Dieldrin

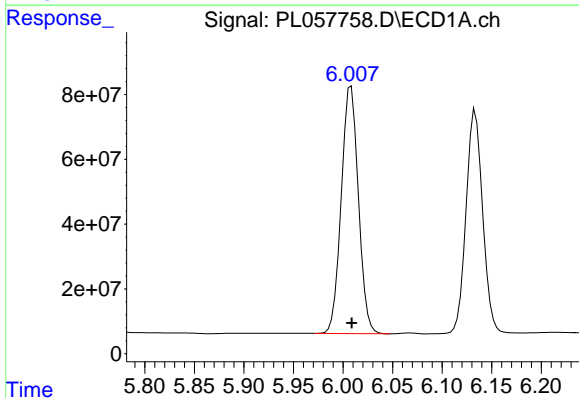
R.T.: 5.751 min
 Delta R.T.: 0.000 min
 Response: 1031130693
 Conc: 74.39 ng/ml

Instrument :
 ECD_L
 ClientSampleId :
 PSTDICC075



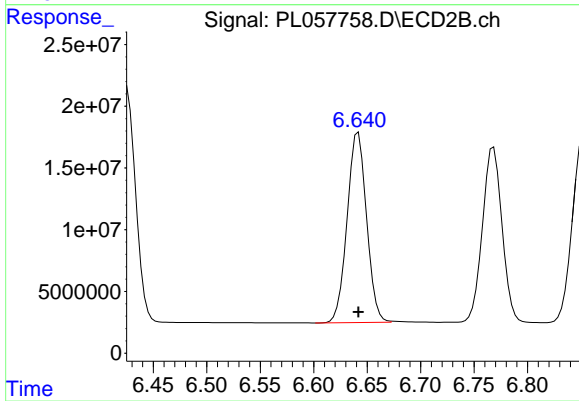
#13 Dieldrin

R.T.: 6.426 min
 Delta R.T.: 0.000 min
 Response: 238930839
 Conc: 75.28 ng/ml



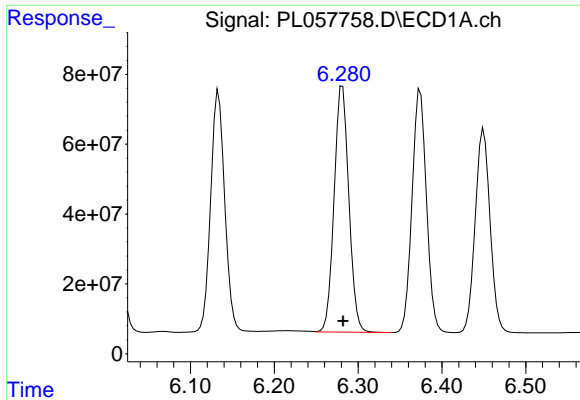
#14 Endrin

R.T.: 6.008 min
 Delta R.T.: 0.000 min
 Response: 918406302
 Conc: 74.30 ng/ml



#14 Endrin

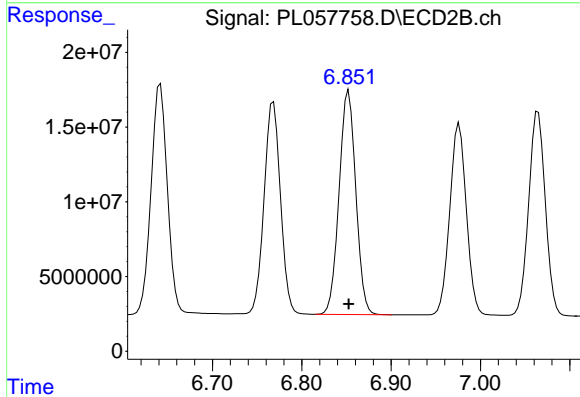
R.T.: 6.642 min
 Delta R.T.: 0.000 min
 Response: 194835477
 Conc: 74.89 ng/ml



#15 Endosulfan II

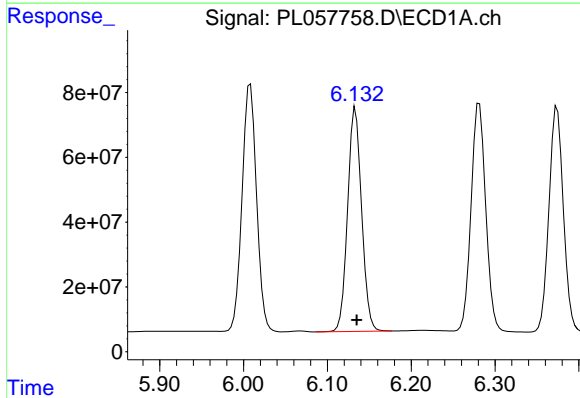
R.T.: 6.281 min
 Delta R.T.: 0.000 min
 Response: 859830560
 Conc: 74.50 ng/ml

Instrument :
 ECD_L
 ClientSampleId :
 PSTDICC075



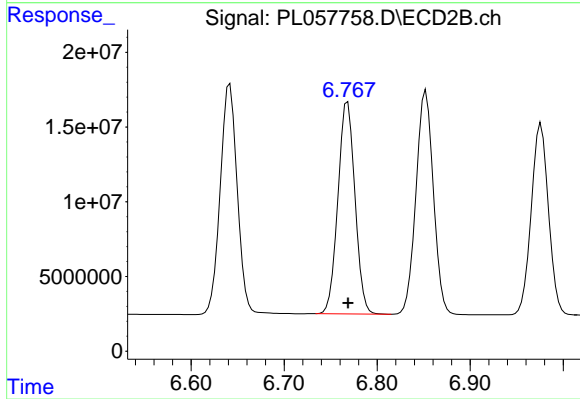
#15 Endosulfan II

R.T.: 6.853 min
 Delta R.T.: 0.000 min
 Response: 194638879
 Conc: 74.13 ng/ml



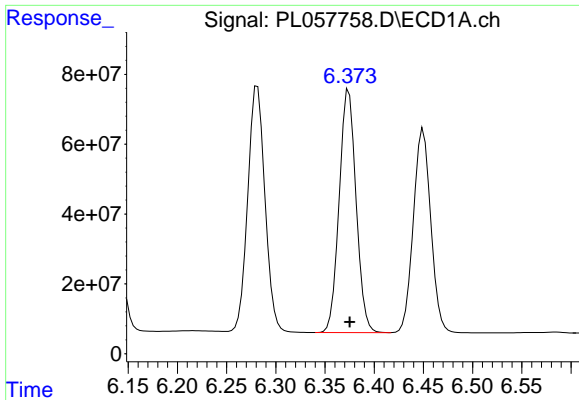
#16 4,4'-DDD

R.T.: 6.133 min
 Delta R.T.: -0.001 min
 Response: 802909200
 Conc: 75.50 ng/ml



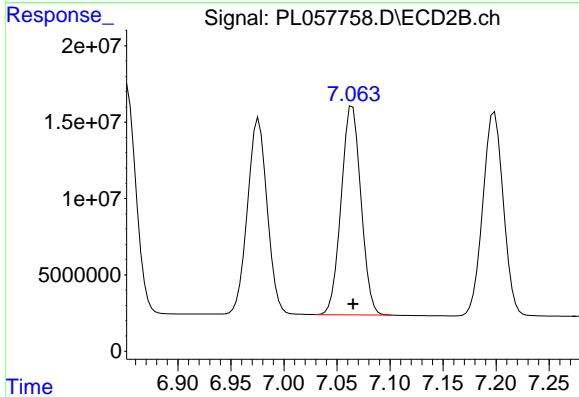
#16 4,4'-DDD

R.T.: 6.768 min
 Delta R.T.: 0.000 min
 Response: 180727461
 Conc: 75.49 ng/ml

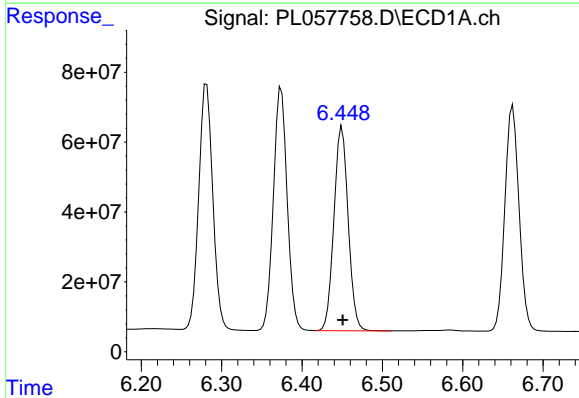


#17 4,4'-DDT
 R.T.: 6.374 min
 Delta R.T.: -0.001 min
 Response: 832813012
 Conc: 76.20 ng/ml

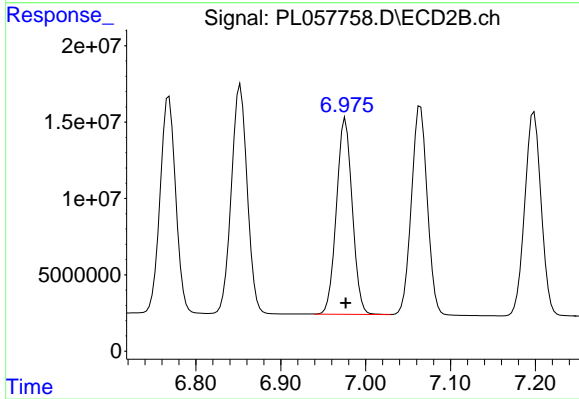
Instrument :
 ECD_L
 ClientSampleId :
 PSTDICC075



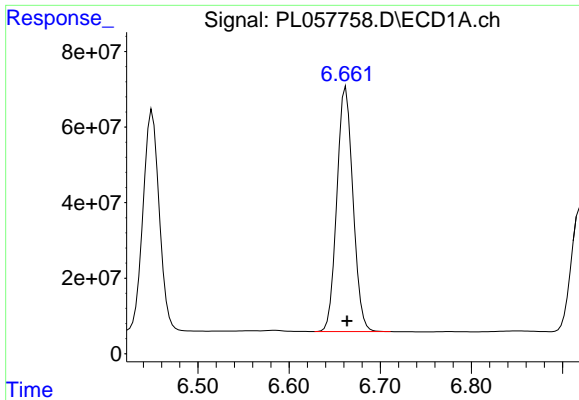
#17 4,4'-DDT
 R.T.: 7.065 min
 Delta R.T.: 0.000 min
 Response: 177341286
 Conc: 75.76 ng/ml



#18 Endrin aldehyde
 R.T.: 6.450 min
 Delta R.T.: 0.000 min
 Response: 721637328
 Conc: 74.51 ng/ml

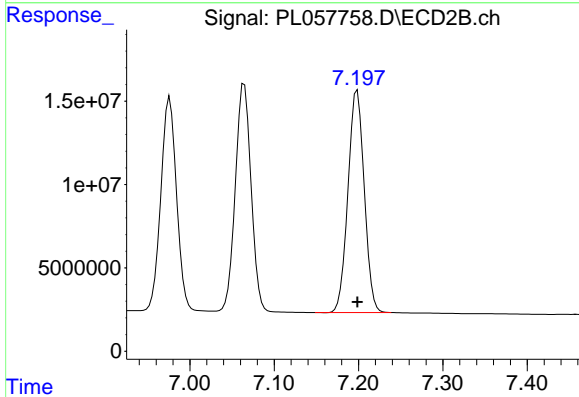


#18 Endrin aldehyde
 R.T.: 6.976 min
 Delta R.T.: 0.000 min
 Response: 166048263
 Conc: 73.45 ng/ml

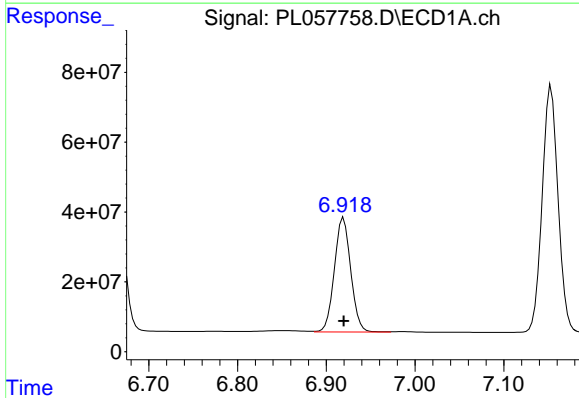


#19 Endosulfan Sulfate
 R.T.: 6.662 min
 Delta R.T.: -0.001 min
 Response: 793118570
 Conc: 73.76 ng/ml

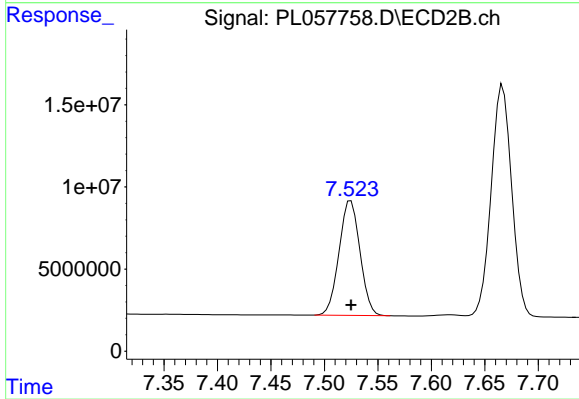
Instrument :
 ECD_L
 ClientSampleId :
 PSTDICC075



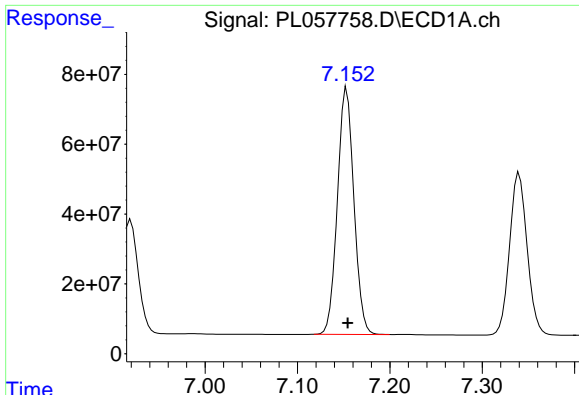
#19 Endosulfan Sulfate
 R.T.: 7.198 min
 Delta R.T.: 0.000 min
 Response: 179040362
 Conc: 73.64 ng/ml



#20 Methoxychlor
 R.T.: 6.920 min
 Delta R.T.: 0.000 min
 Response: 419180133
 Conc: 75.30 ng/ml



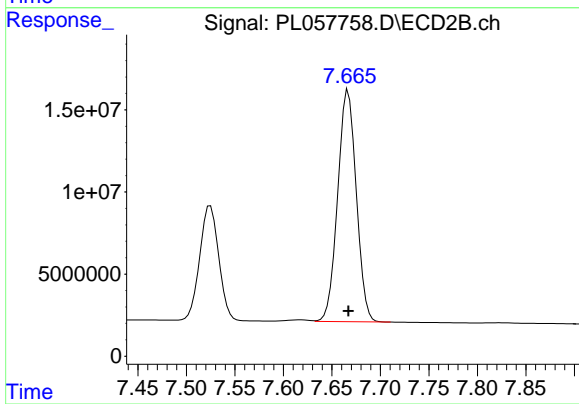
#20 Methoxychlor
 R.T.: 7.525 min
 Delta R.T.: 0.000 min
 Response: 95282112
 Conc: 72.71 ng/ml



#21 Endrin ketone

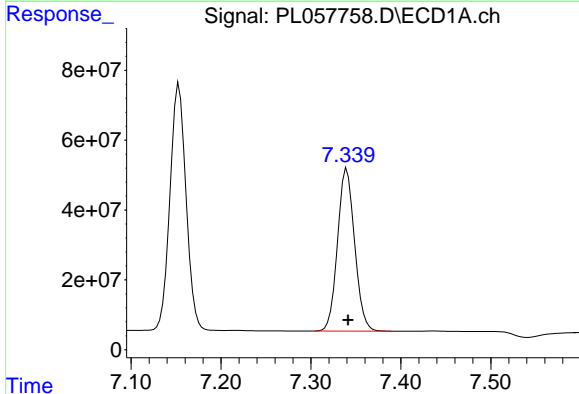
R.T.: 7.153 min
 Delta R.T.: 0.000 min
 Response: 876796061
 Conc: 74.60 ng/ml

Instrument :
 ECD_L
 ClientSampled :
 PSTDICC075



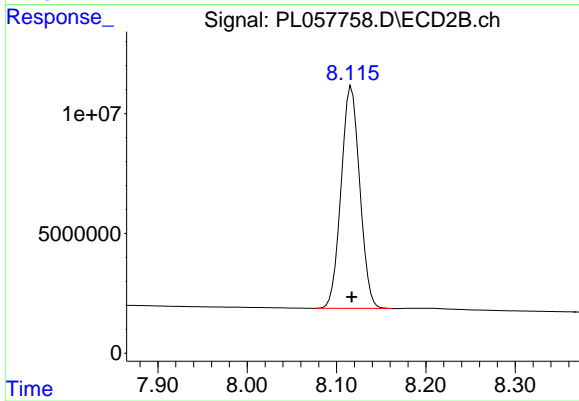
#21 Endrin ketone

R.T.: 7.667 min
 Delta R.T.: 0.000 min
 Response: 188194171
 Conc: 73.85 ng/ml



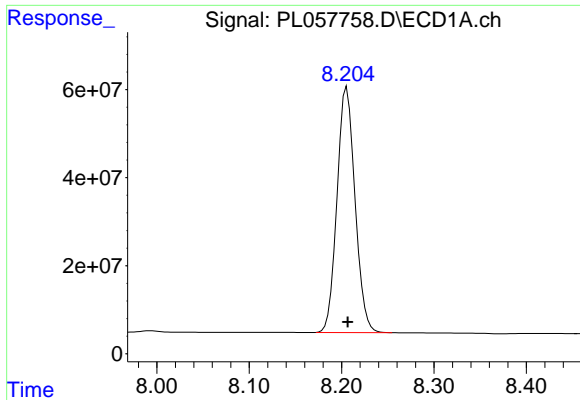
#22 Mirex

R.T.: 7.340 min
 Delta R.T.: -0.001 min
 Response: 613920520
 Conc: 73.42 ng/ml



#22 Mirex

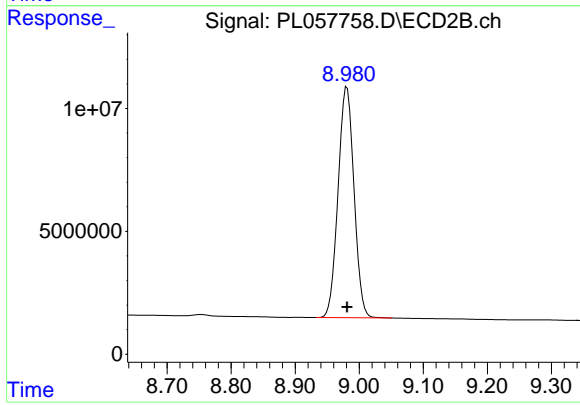
R.T.: 8.117 min
 Delta R.T.: 0.000 min
 Response: 134320714
 Conc: 72.02 ng/ml



#28 Decachlorobiphenyl

R.T.: 8.206 min
Delta R.T.: 0.000 min
Response: 756549507
Conc: 72.50 ng/ml

Instrument :
ECD_L
ClientSampleId :
PSTDIC075



#28 Decachlorobiphenyl

R.T.: 8.981 min
Delta R.T.: 0.000 min
Response: 162150199
Conc: 71.99 ng/ml