

Data Path : Z:\pestpcbsrv\HPCHEM1\ECD_L\Data\PL040320\
 Data File : PL057788.D
 Signal(s) : Signal #1: ECD1A.ch Signal #2: ECD2B.ch
 Acq On : 03 Apr 2020 20:20
 Operator : AJ\MA
 Sample : L2148-03
 Misc :
 ALS Vial : 23 Sample Multiplier: 1

Instrument :
 ECD_L
 ClientSampleId :
 FK-GF-02-055-B

Manual Integrations
 APPROVED

mohammad
 4/6/2020 1:31:31 PM

Integration File signal 1: autoint1.e
 Integration File signal 2: autoint2.e
 Quant Time: Apr 04 07:03:38 2020
 Quant Method : Z:\pestpcbsrv\HPCHEM1\ECD_L\methods\PL040320.M
 Quant Title : GC Extractables
 QLast Update : Sat Apr 04 06:41:11 2020
 Response via : Initial Calibration
 Integrator: ChemStation

Volume Inj. : 1 µl
 Signal #1 Phase : ZB-MR2 Signal #2 Phase: ZB-MR1
 Signal #1 Info : 30M x 0.32mm x0.2 Signal #2 Info : 30M x 0.32mm x0.5µm

Compound	RT#1	RT#2	Resp#1	Resp#2	ng/ml	ng/ml

System Monitoring Compounds						
1) SA Tetrachlo...	3.458	3.956	128.4E6	28832074	12.733	13.286
28) SA Decachlor...	8.205	8.979	115.8E6	28037749	11.234	12.552
Target Compounds						
4) MA Heptachlor	4.478	5.126	118.4E6	28721867	7.388	8.558m
10) B gamma-Chl...	5.400	6.048	60021968	31389374	4.419m	9.688 #
11) B alpha-Chl...	5.453	6.121	135.7E6	80784683	10.190	24.687 #
12) B 4,4'-DDE	5.616	6.277	35419441	9382717	2.704m	3.169
16) A 4,4'-DDD	6.132	6.774	5973292	3955385	0.598	1.733m#
17) MA 4,4'-DDT	6.373	7.062	50448841	12085948	4.971	5.426m

(f)=RT Delta > 1/2 Window (#)=Amounts differ by > 25% (m)=manual int.

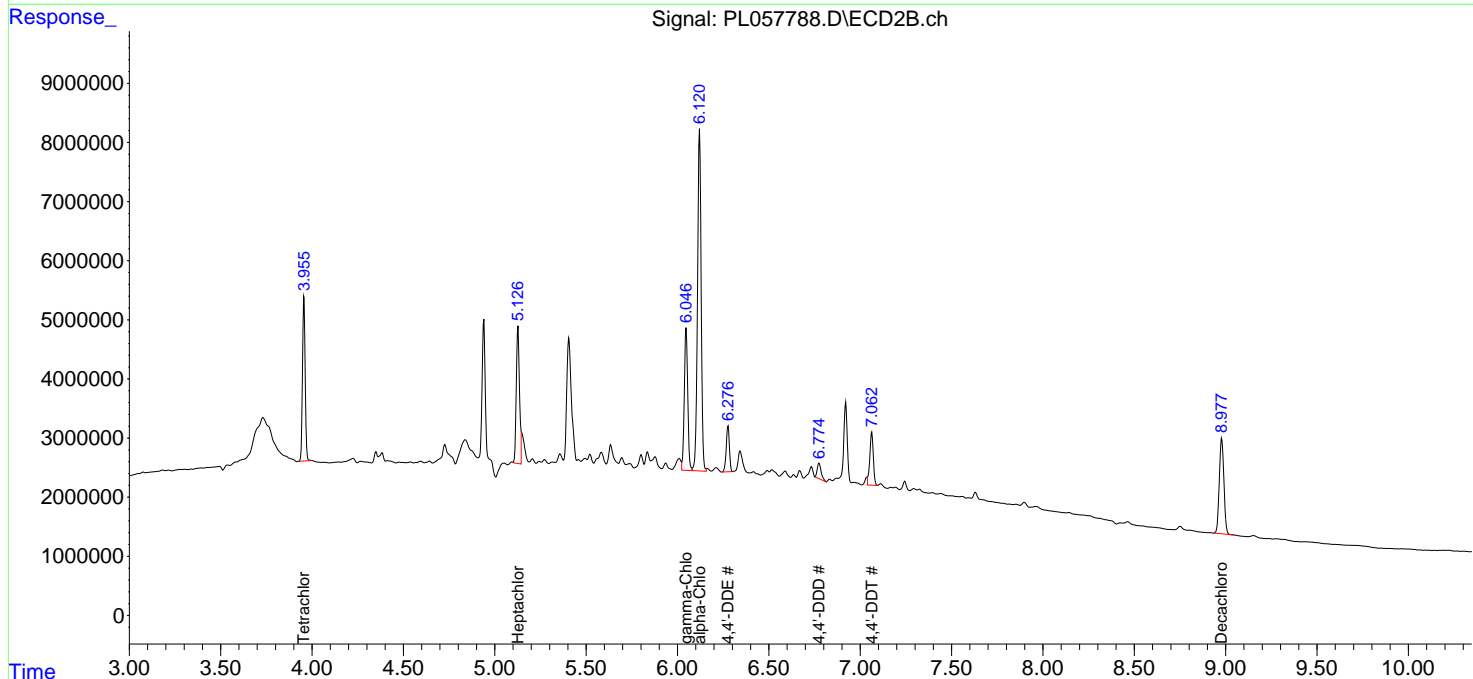
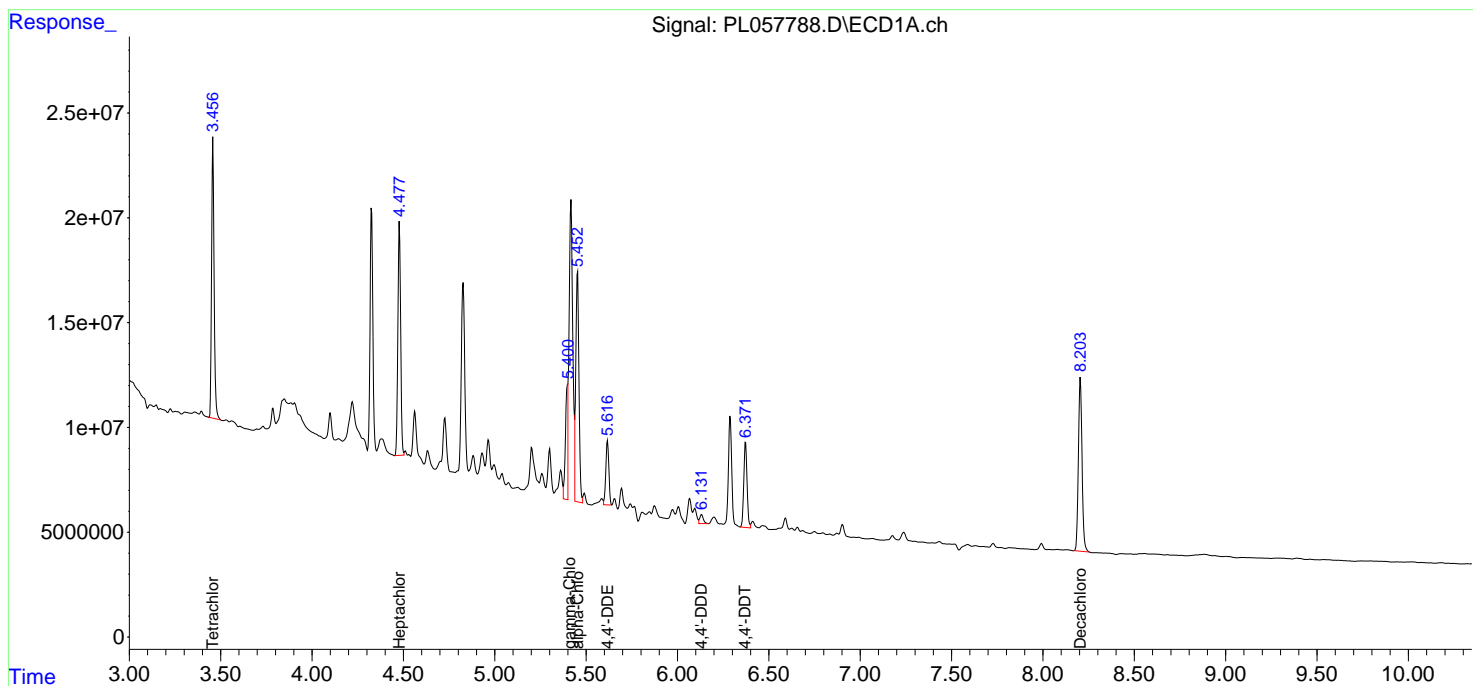
Data Path : Z:\pestpcbsrv\HPCHEM1\ECD_L\Data\PL040320\
 Data File : PL057788.D
 Signal(s) : Signal #1: ECD1A.ch Signal #2: ECD2B.ch
 Acq On : 03 Apr 2020 20:20
 Operator : AJ\MA
 Sample : L2148-03
 Misc :
 ALS Vial : 23 Sample Multiplier: 1

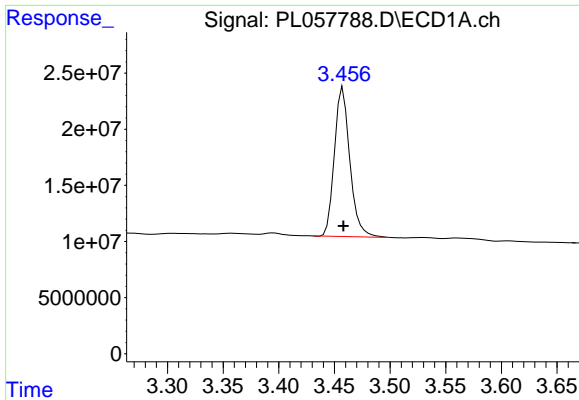
Instrument :
 ECD_L
ClientSampled :
 FK-GF-02-055-B

Manual Integrations
APPROVED
 mohammad
 4/6/2020 1:31:31 PM

Integration File signal 1: autoint1.e
 Integration File signal 2: autoint2.e
 Quant Time: Apr 04 07:03:38 2020
 Quant Method : Z:\pestpcbsrv\HPCHEM1\ECD_L\methods\PL040320.M
 Quant Title : GC Extractables
 QLast Update : Sat Apr 04 06:41:11 2020
 Response via : Initial Calibration
 Integrator: ChemStation

Volume Inj. : 1 µl
 Signal #1 Phase : ZB-MR2 Signal #2 Phase: ZB-MR1
 Signal #1 Info : 30M x 0.32mm x0.2 Signal #2 Info : 30M x 0.32mm x0.5µm

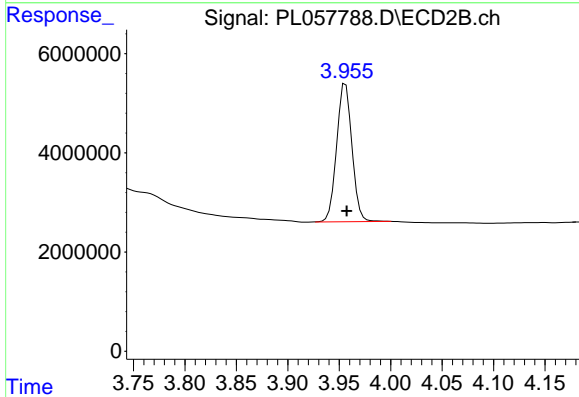




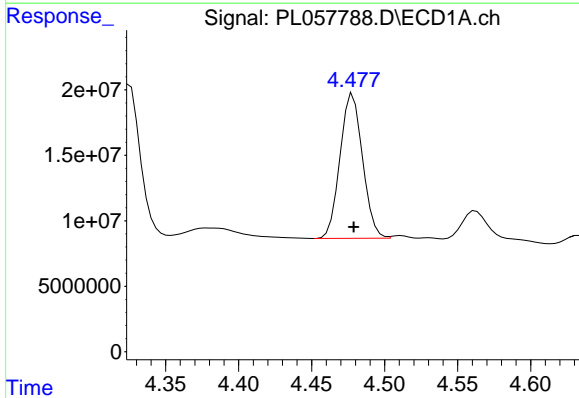
#1 Tetrachloro-m-xylene
 R.T.: 3.458 min
 Delta R.T.: 0.000 min
 Response: 128364300
 Conc: 12.73 ng/ml

Instrument :
 ECD_L
 ClientSampled :
 FK-GF-02-055-B

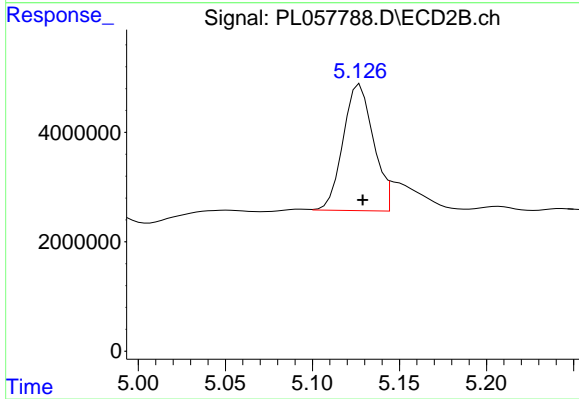
Manual Integrations
 APPROVED
 mohammad
 4/6/2020 1:31:31 PM



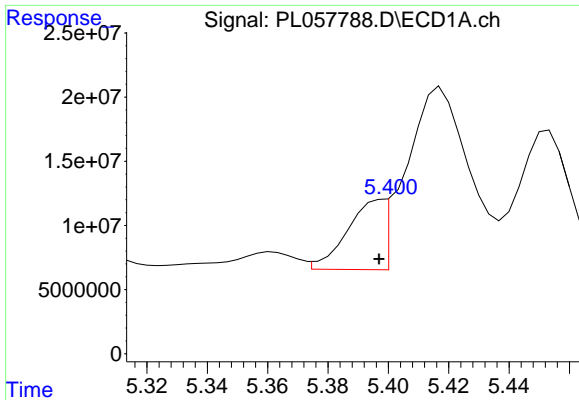
#1 Tetrachloro-m-xylene
 R.T.: 3.956 min
 Delta R.T.: -0.001 min
 Response: 28832074
 Conc: 13.29 ng/ml



#4 Heptachlor
 R.T.: 4.478 min
 Delta R.T.: 0.000 min
 Response: 118429305
 Conc: 7.39 ng/ml



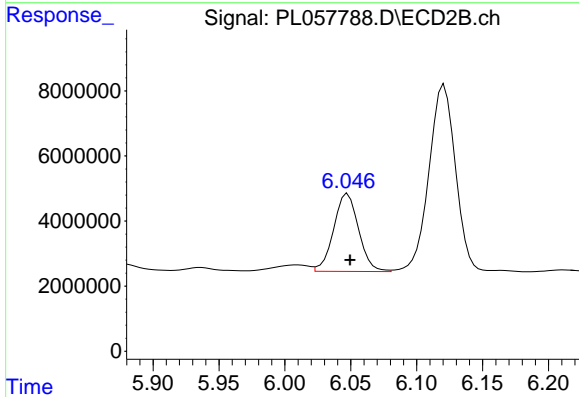
#4 Heptachlor
 R.T.: 5.126 min
 Delta R.T.: -0.003 min
 Response: 28721867
 Conc: 8.56 ng/ml m



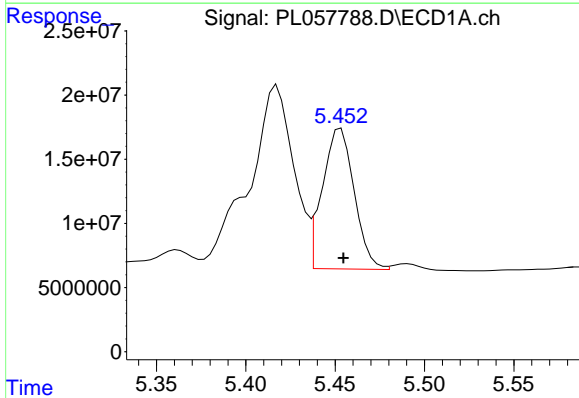
#10 gamma-Chlordane
 R.T.: 5.400 min
 Delta R.T.: 0.003 min
 Response: 60021968
 Conc: 4.42 ng/ml m

Instrument :
 ECD_L
 ClientSampled :
 FK-GF-02-055-B

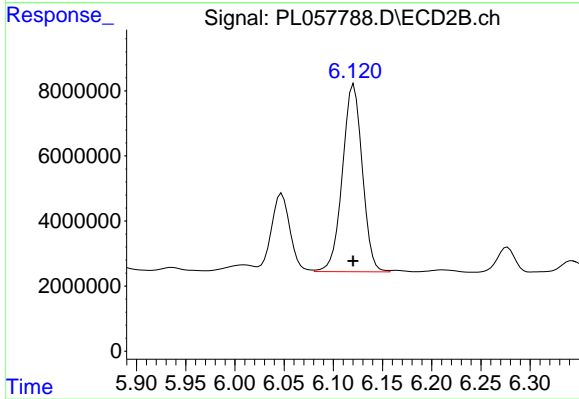
Manual Integrations
 APPROVED
 mohammad
 4/6/2020 1:31:31 PM



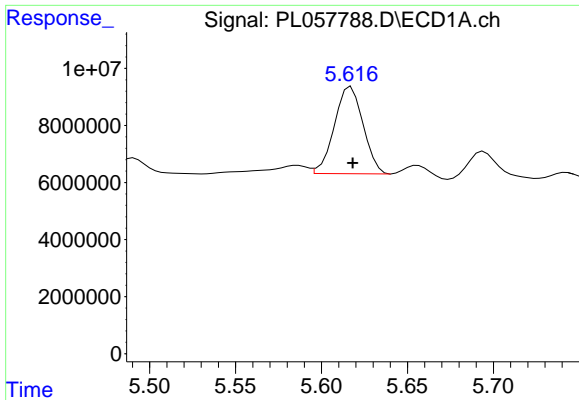
#10 gamma-Chlordane
 R.T.: 6.048 min
 Delta R.T.: -0.002 min
 Response: 31389374
 Conc: 9.69 ng/ml



#11 alpha-Chlordane
 R.T.: 5.453 min
 Delta R.T.: -0.001 min
 Response: 135680689
 Conc: 10.19 ng/ml



#11 alpha-Chlordane
 R.T.: 6.121 min
 Delta R.T.: 0.000 min
 Response: 80784683
 Conc: 24.69 ng/ml



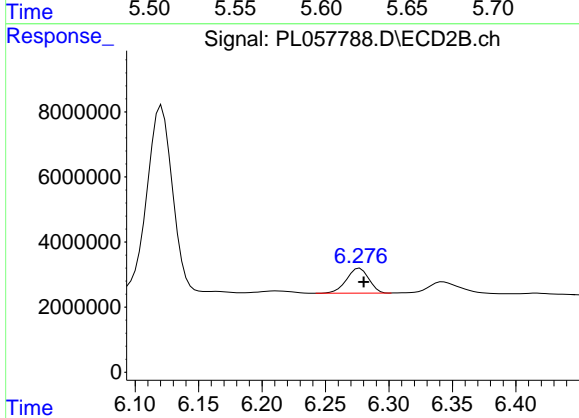
#12 4,4'-DDE

R.T.: 5.616 min
 Delta R.T.: -0.002 min
 Response: 35419441
 Conc: 2.70 ng/ml m

Instrument :
 ECD_L
 ClientSampled :
 FK-GF-02-055-B

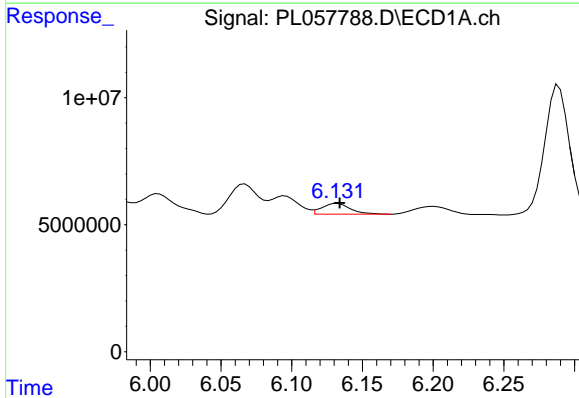
Manual Integrations
 APPROVED

mohammad
 4/6/2020 1:31:31 PM



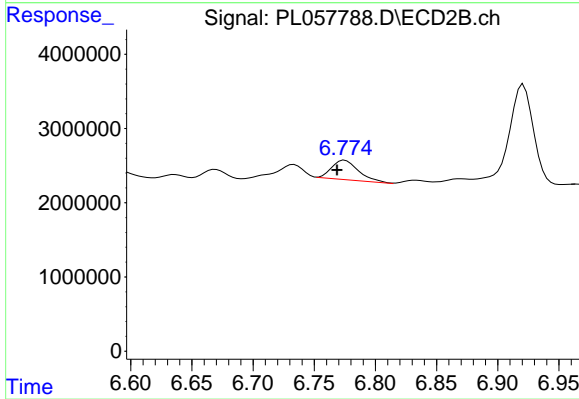
#12 4,4'-DDE

R.T.: 6.277 min
 Delta R.T.: -0.003 min
 Response: 9382717
 Conc: 3.17 ng/ml



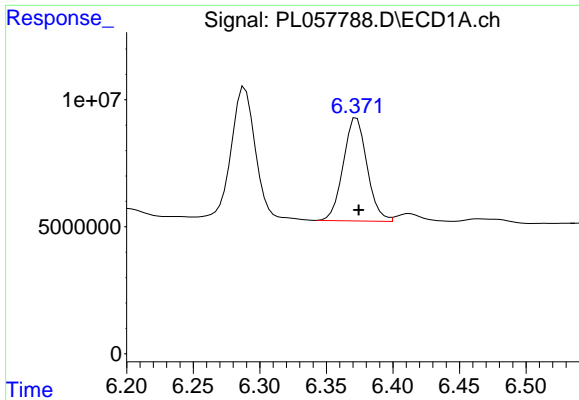
#16 4,4'-DDD

R.T.: 6.132 min
 Delta R.T.: -0.002 min
 Response: 5973292
 Conc: 0.60 ng/ml



#16 4,4'-DDD

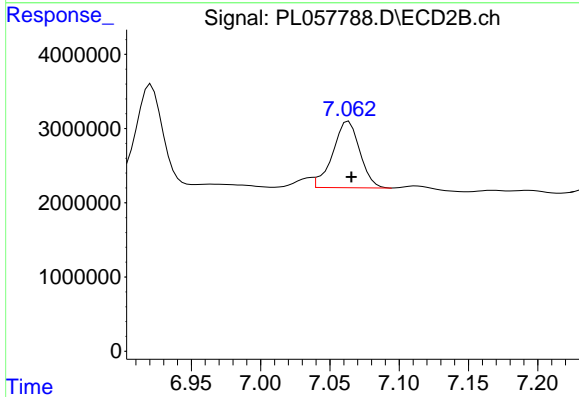
R.T.: 6.774 min
 Delta R.T.: 0.005 min
 Response: 3955385
 Conc: 1.73 ng/ml m



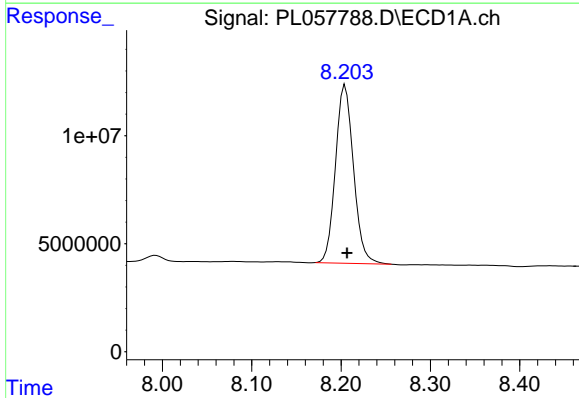
#17 4,4'-DDT
R.T.: 6.373 min
Delta R.T.: -0.001 min
Response: 50448841
Conc: 4.97 ng/ml

Instrument :
ECD_L
ClientSampleId :
FK-GF-02-055-B

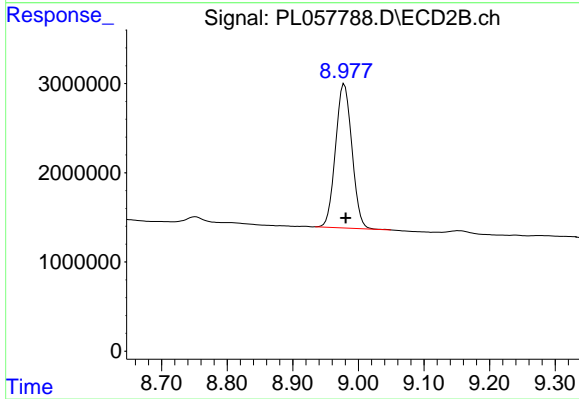
Manual Integrations
APPROVED
mohammad
4/6/2020 1:31:31 PM



#17 4,4'-DDT
R.T.: 7.062 min
Delta R.T.: -0.003 min
Response: 12085948
Conc: 5.43 ng/ml m



#28 Decachlorobiphenyl
R.T.: 8.205 min
Delta R.T.: -0.002 min
Response: 115801256
Conc: 11.23 ng/ml



#28 Decachlorobiphenyl
R.T.: 8.979 min
Delta R.T.: -0.002 min
Response: 28037749
Conc: 12.55 ng/ml