

Data Path : Z:\pestpcbsrv\HPCHEM1\ECD_L\Data\PL040422\
 Data File : PL073795.D
 Signal(s) : Signal #1: ECD1A.ch Signal #2: ECD2B.ch
 Acq On : 04 Apr 2022 11:21
 Operator : AR\AJ
 Sample : PSTDCCC050
 Misc :
 ALS Vial : 4 Sample Multiplier: 1

Instrument :
 ECD_L
 ClientSampleId :

Integration File signal 1: autoint1.e
 Integration File signal 2: autoint2.e
 Quant Time: Apr 05 01:14:38 2022
 Quant Method : Z:\pestpcbsrv\HPCHEM1\ECD_L\methods\PL031122.M
 Quant Title : GC Extractables
 QLast Update : Mon Mar 14 04:12:46 2022
 Response via : Initial Calibration
 Integrator: ChemStation

Volume Inj. : 1 µl
 Signal #1 Phase : ZB-MR2 Signal #2 Phase: ZB-MR1
 Signal #1 Info : 30M x 0.32mm x0.2 Signal #2 Info : 30M x 0.32mm x0.5µm

	Compound	RT#1	RT#2	Resp#1	Resp#2	ng/ml	ng/ml

System Monitoring Compounds							
1)	SA Tetrachlo...	4.651	5.487	16423713	93117132	51.278	56.736
28)	SA Decachlor...	10.421	11.335	24798951	81989210	48.769	45.851
Target Compounds							
2)	A alpha-BHC	5.358	6.051	21222358	134.2E6	51.485	59.671
3)	MA gamma-BHC...	5.782	6.441	20930480	123.6E6	50.177	57.868
4)	MA Heptachlor	6.193	7.100	21911990	129.8E6	48.564	55.405
5)	MB Aldrin	6.518	7.468	20511931	118.6E6	49.645	56.597
6)	B beta-BHC	6.162	6.678	10654202	55113589	51.746	52.873
7)	B delta-BHC	6.424	6.946	20498223	119.7E6	51.035	55.574
8)	B Heptachlo...	7.095	7.926	20909682	108.5E6	48.517	54.338
9)	A Endosulfan I	7.497	8.326	19977134	97791611	48.699	53.573
10)	B gamma-Chl...	7.372	8.194	21316086	109.9E6	48.744	53.814
11)	B alpha-Chl...	7.441	8.277	21496241	107.0E6	48.641	53.483
12)	B 4,4'-DDE	7.655	8.461	17678911	98420232	49.267	54.910
13)	MA Dieldrin	7.784	8.611	20255865	99052127	48.619	53.694
14)	MA Endrin	8.074	8.846	19232186	80219372	49.567	52.110
15)	B Endosulfa...	8.385	9.069	18992320	78625318	48.589	51.194
16)	A 4,4'-DDD	8.240	8.989	15770836	75967391	48.565	52.043
17)	MA 4,4'-DDT	8.501	9.308	17425311	83349321	46.076	50.993
18)	B Endrin al...	8.573	9.203	14969841	55251395	47.336	45.055
19)	B Endosulfa...	8.804	9.440	20266053	79871814	47.976	50.678
20)	A Methoxychlor	9.096	9.788	11097809	42100691	43.260	46.723
21)	B Endrin ke...	9.323	9.929	24134363	83787330	49.332	50.762
22)	Mirex	9.510	10.407	22263267	66516524	47.212	48.965
24)	Chlordane-2	0.000	7.468f	0	118.6E6	N.D.	1649.679 #
25)	Chlordane-3	7.372	8.194	21316086	109.9E6	522.016	405.375
26)	Chlordane-4	7.441	8.277	21496241	107.0E6	485.015	322.917 #
27)	Chlordane-5	8.385	0.000	18992320	0	1159.816	N.D. #

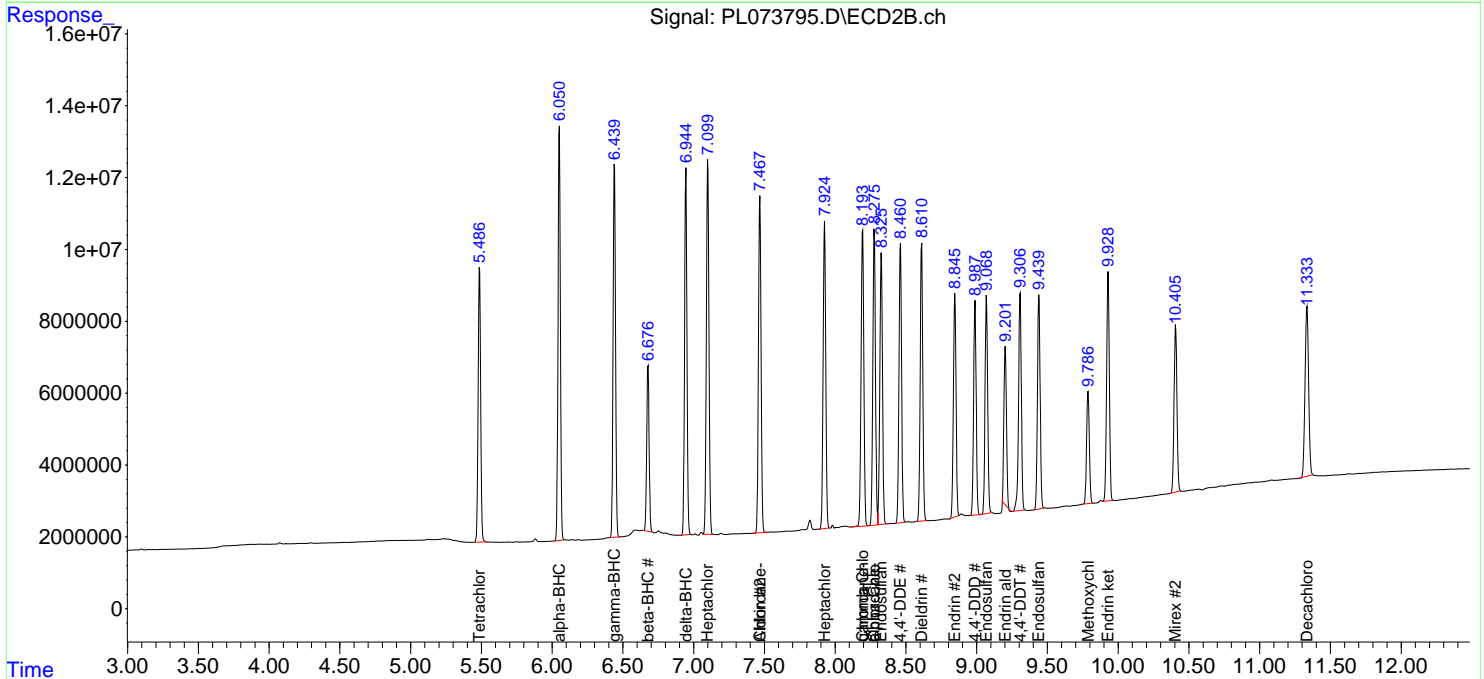
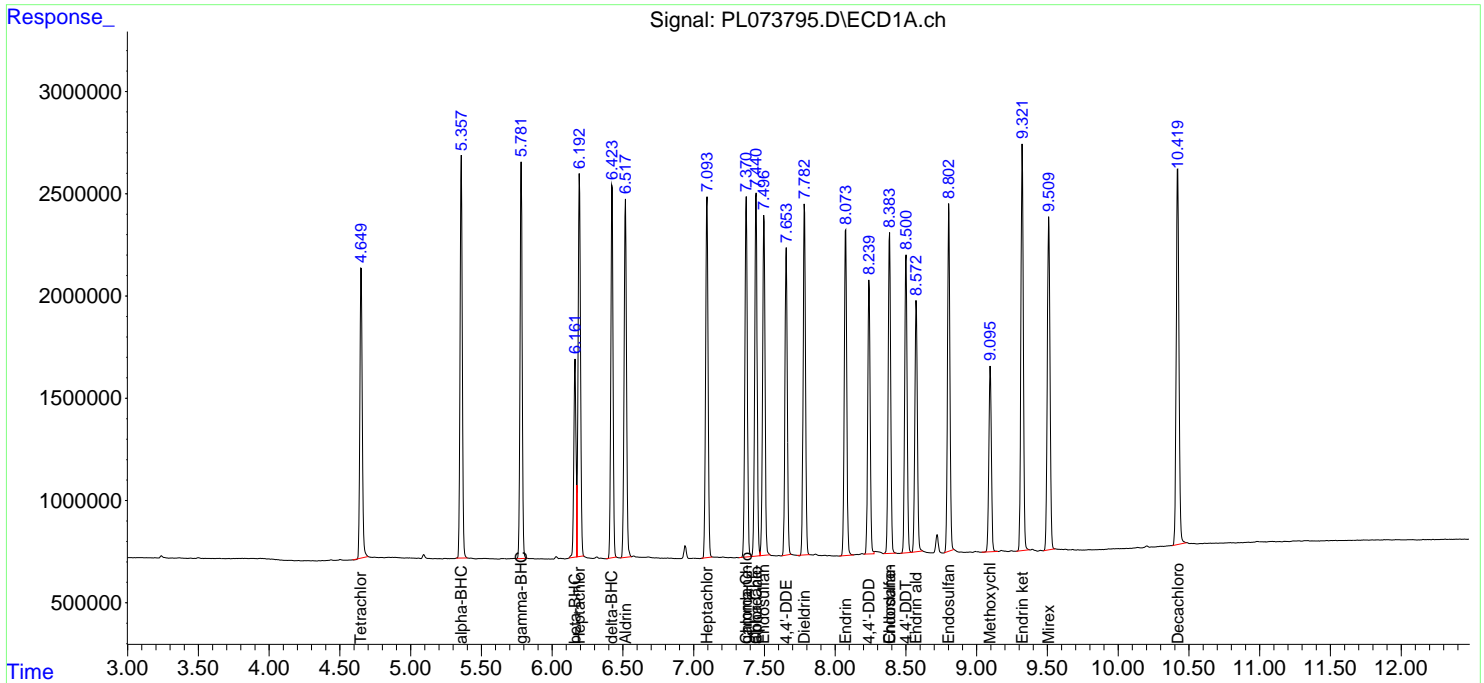
(f)=RT Delta > 1/2 Window (#)=Amounts differ by > 25% (m)=manual int.

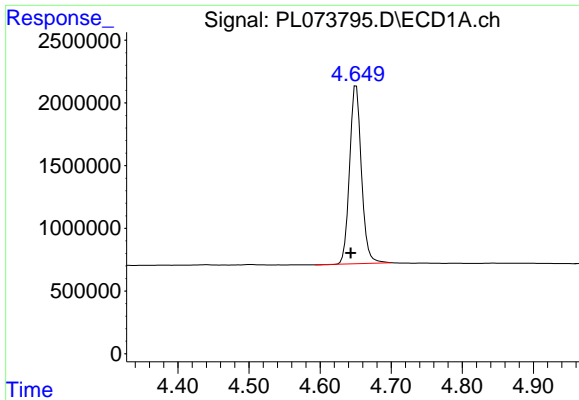
Data Path : Z:\pestpcbsrv\HPCHEM1\ECD_L\Data\PL040422\
 Data File : PL073795.D
 Signal(s) : Signal #1: ECD1A.ch Signal #2: ECD2B.ch
 Acq On : 04 Apr 2022 11:21
 Operator : AR\AJ
 Sample : PSTDCCC050
 Misc :
 ALS Vial : 4 Sample Multiplier: 1

Instrument :
 ECD_L
 ClientSampleId :

Integration File signal 1: autoint1.e
 Integration File signal 2: autoint2.e
 Quant Time: Apr 05 01:14:38 2022
 Quant Method : Z:\pestpcbsrv\HPCHEM1\ECD_L\methods\PL031122.M
 Quant Title : GC Extractables
 QLast Update : Mon Mar 14 04:12:46 2022
 Response via : Initial Calibration
 Integrator: ChemStation

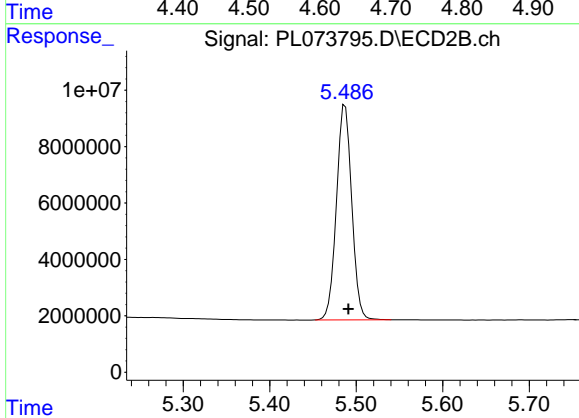
Volume Inj. : 1 µl
 Signal #1 Phase : ZB-MR2 Signal #2 Phase: ZB-MR1
 Signal #1 Info : 30M x 0.32mm x0.2 Signal #2 Info : 30M x 0.32mm x0.5µm



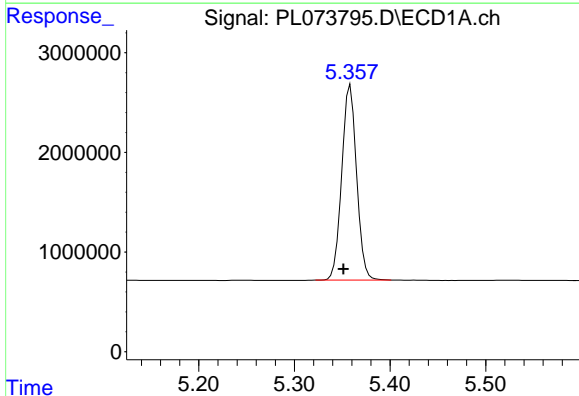


#1 Tetrachloro-m-xylene
 R.T.: 4.651 min
 Delta R.T.: 0.008 min
 Response: 16423713
 Conc: 51.28 ng/ml

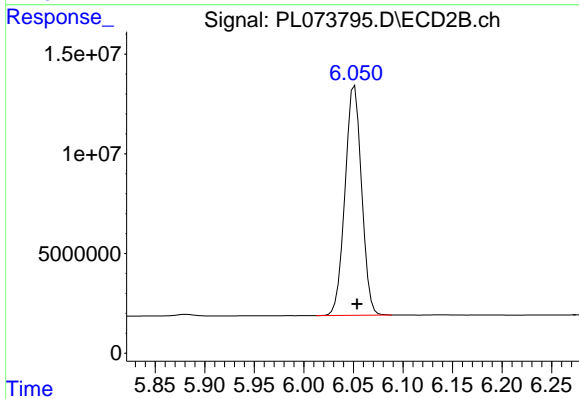
Instrument :
 ECD_L
 ClientSampleId :



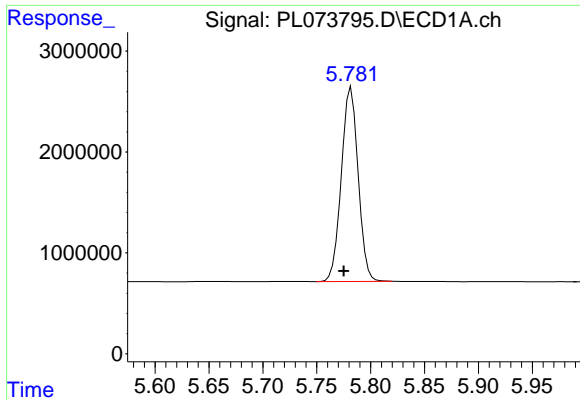
#1 Tetrachloro-m-xylene
 R.T.: 5.487 min
 Delta R.T.: -0.004 min
 Response: 93117132
 Conc: 56.74 ng/ml



#2 alpha-BHC
 R.T.: 5.358 min
 Delta R.T.: 0.007 min
 Response: 21222358
 Conc: 51.49 ng/ml

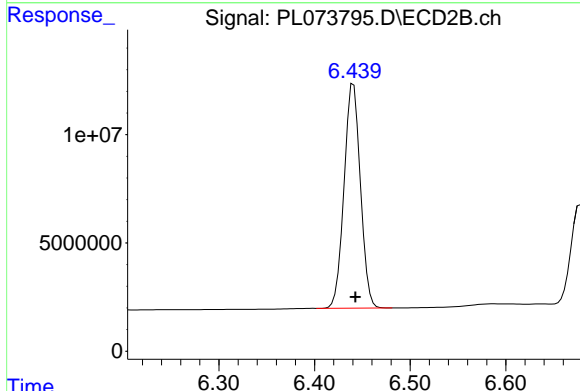


#2 alpha-BHC
 R.T.: 6.051 min
 Delta R.T.: -0.003 min
 Response: 134238891
 Conc: 59.67 ng/ml

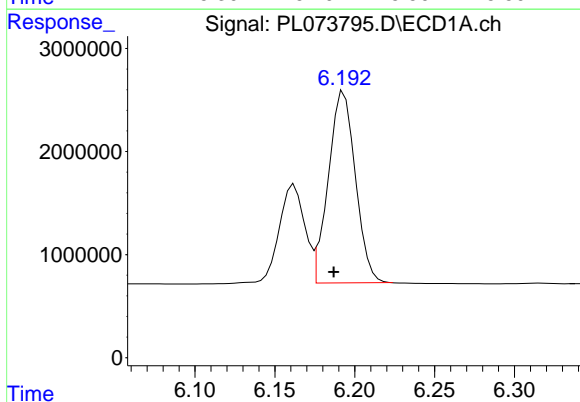


#3 gamma-BHC (Lindane)
 R.T.: 5.782 min
 Delta R.T.: 0.007 min
 Response: 20930480
 Conc: 50.18 ng/ml

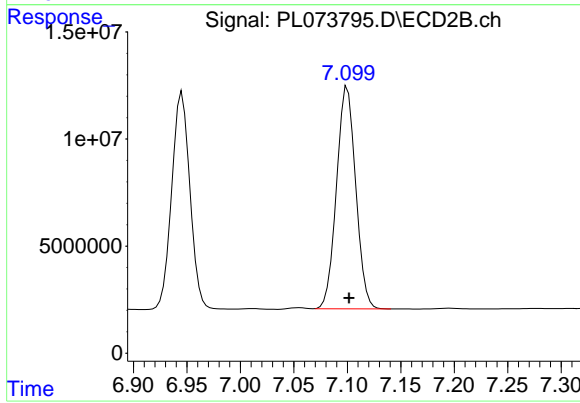
Instrument :
 ECD_L
 ClientSampleId :



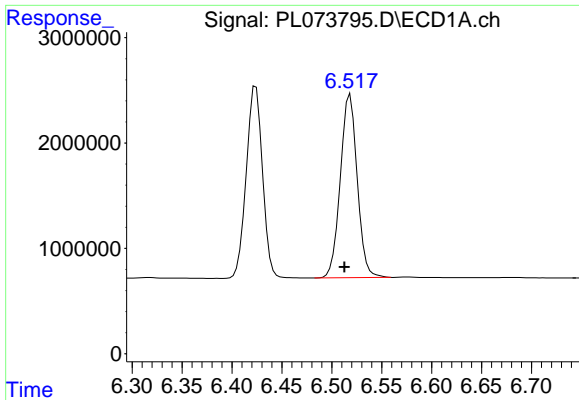
#3 gamma-BHC (Lindane)
 R.T.: 6.441 min
 Delta R.T.: -0.002 min
 Response: 123552393
 Conc: 57.87 ng/ml



#4 Heptachlor
 R.T.: 6.193 min
 Delta R.T.: 0.006 min
 Response: 21911990
 Conc: 48.56 ng/ml

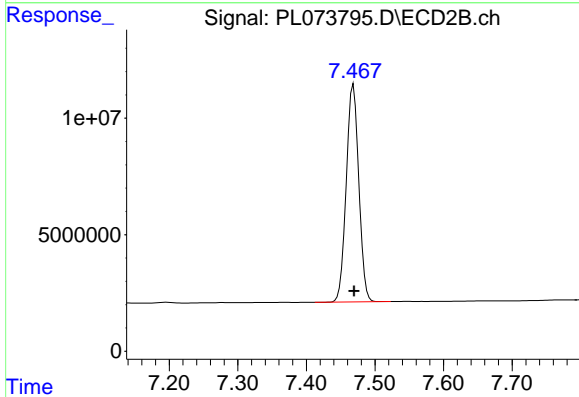


#4 Heptachlor
 R.T.: 7.100 min
 Delta R.T.: -0.001 min
 Response: 129818539
 Conc: 55.40 ng/ml

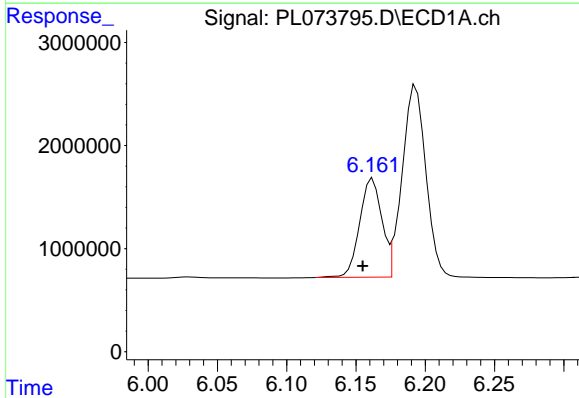


#5 Aldrin
 R.T.: 6.518 min
 Delta R.T.: 0.006 min
 Response: 20511931
 Conc: 49.65 ng/ml

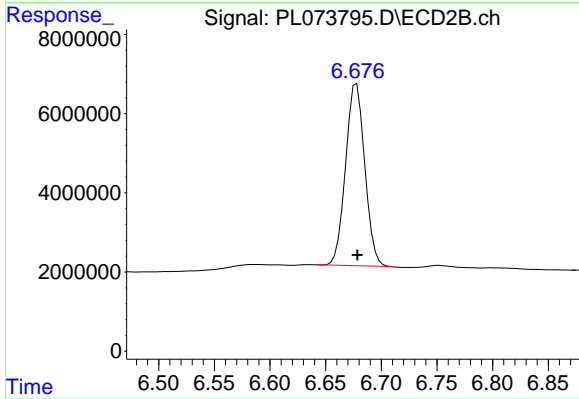
Instrument :
 ECD_L
 ClientSampleId :



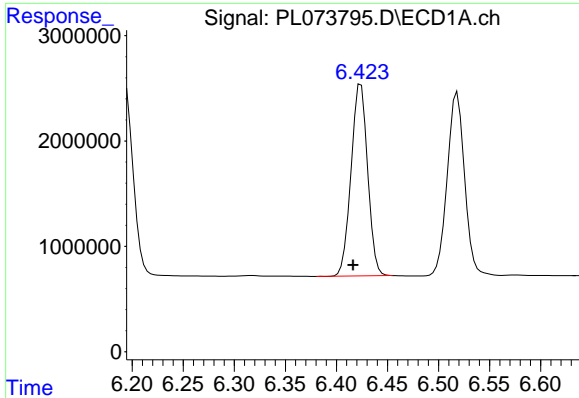
#5 Aldrin
 R.T.: 7.468 min
 Delta R.T.: -0.001 min
 Response: 118568557
 Conc: 56.60 ng/ml



#6 beta-BHC
 R.T.: 6.162 min
 Delta R.T.: 0.007 min
 Response: 10654202
 Conc: 51.75 ng/ml

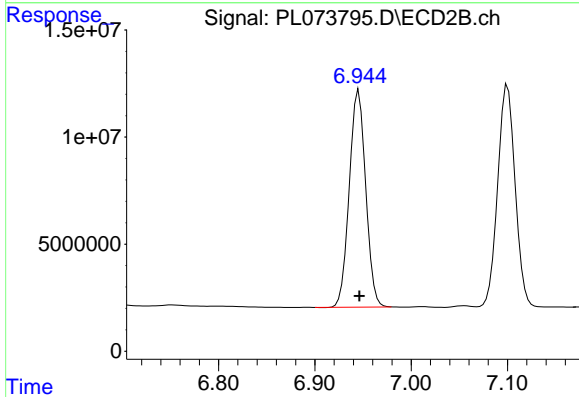


#6 beta-BHC
 R.T.: 6.678 min
 Delta R.T.: 0.000 min
 Response: 55113589
 Conc: 52.87 ng/ml

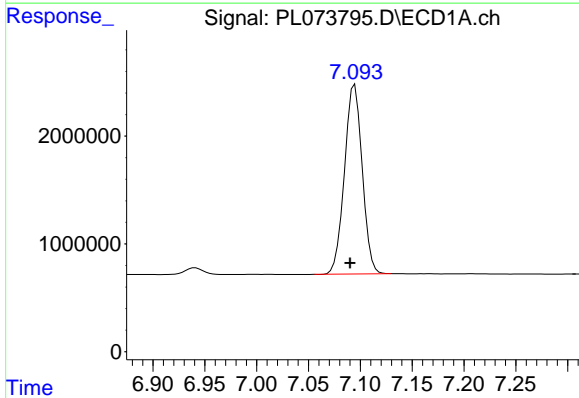


#7 delta-BHC
 R.T.: 6.424 min
 Delta R.T.: 0.008 min
 Response: 20498223
 Conc: 51.04 ng/ml

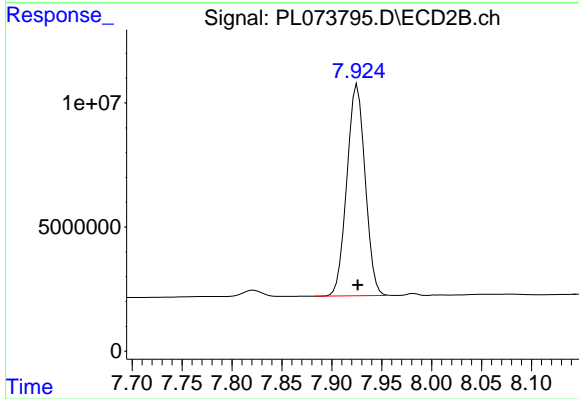
Instrument :
 ECD_L
 ClientSampleId :



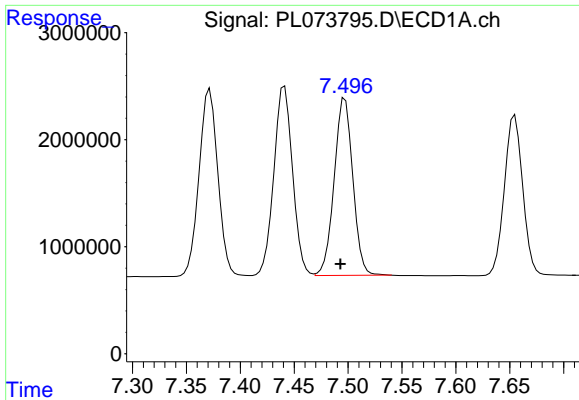
#7 delta-BHC
 R.T.: 6.946 min
 Delta R.T.: 0.000 min
 Response: 119682006
 Conc: 55.57 ng/ml



#8 Heptachlor epoxide
 R.T.: 7.095 min
 Delta R.T.: 0.004 min
 Response: 20909682
 Conc: 48.52 ng/ml



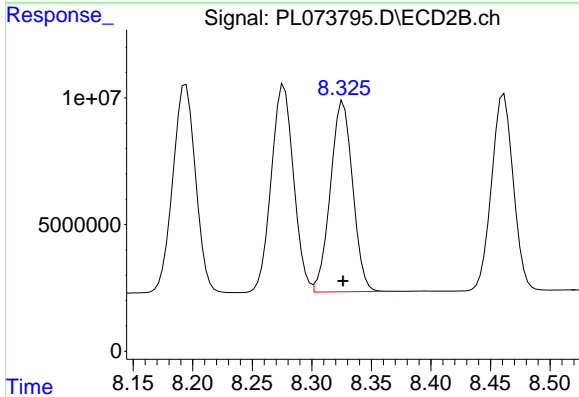
#8 Heptachlor epoxide
 R.T.: 7.926 min
 Delta R.T.: 0.000 min
 Response: 108530753
 Conc: 54.34 ng/ml



#9 Endosulfan I

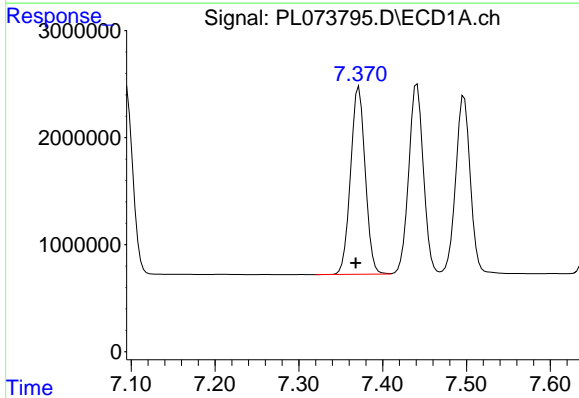
R.T.: 7.497 min
 Delta R.T.: 0.004 min
 Response: 19977134
 Conc: 48.70 ng/ml

Instrument :
 ECD_L
 ClientSampleId :



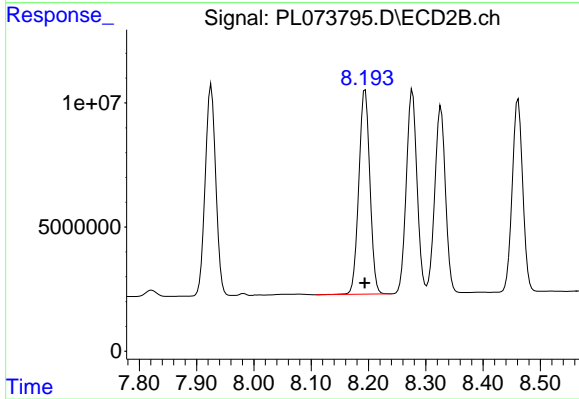
#9 Endosulfan I

R.T.: 8.326 min
 Delta R.T.: 0.000 min
 Response: 97791611
 Conc: 53.57 ng/ml



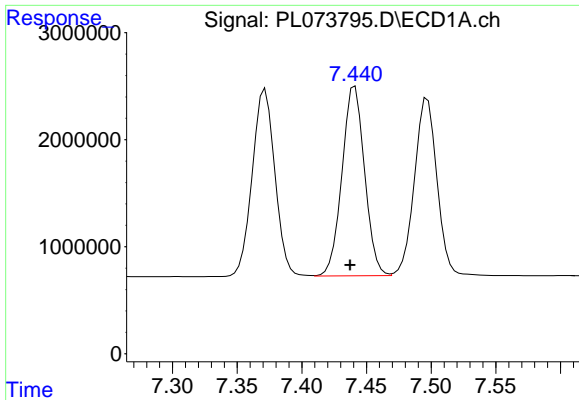
#10 gamma-Chlordane

R.T.: 7.372 min
 Delta R.T.: 0.004 min
 Response: 21316086
 Conc: 48.74 ng/ml



#10 gamma-Chlordane

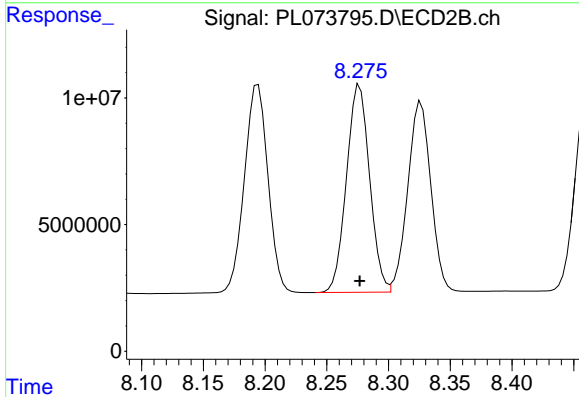
R.T.: 8.194 min
 Delta R.T.: 0.000 min
 Response: 109910245
 Conc: 53.81 ng/ml



#11 alpha-Chlordane

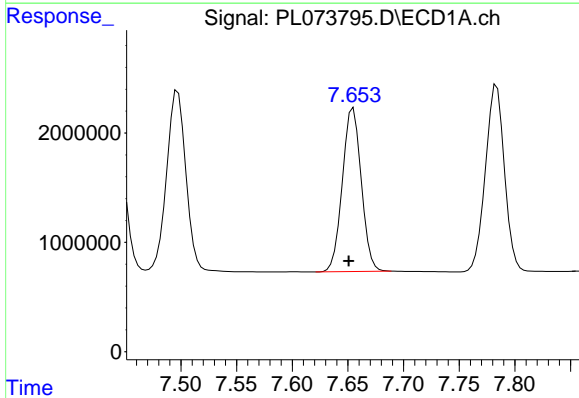
R.T.: 7.441 min
 Delta R.T.: 0.004 min
 Response: 21496241
 Conc: 48.64 ng/ml

Instrument :
 ECD_L
 ClientSampleId :



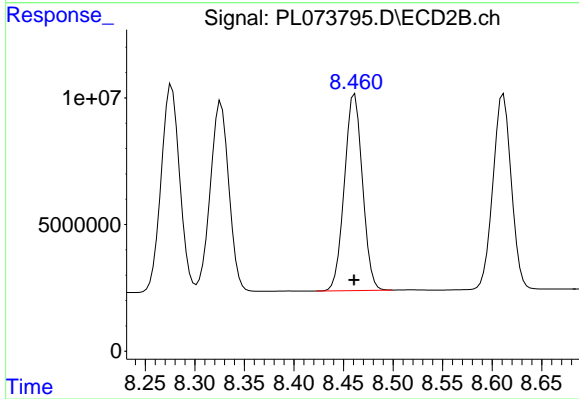
#11 alpha-Chlordane

R.T.: 8.277 min
 Delta R.T.: 0.000 min
 Response: 106967069
 Conc: 53.48 ng/ml



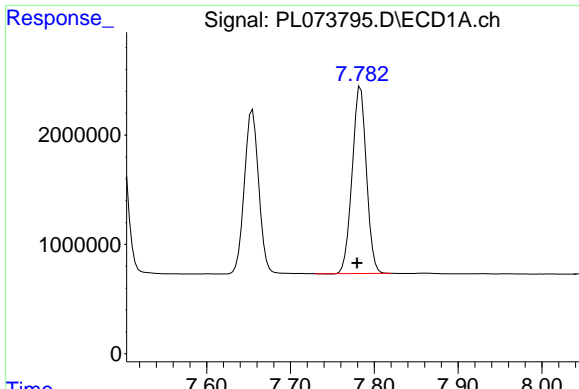
#12 4,4'-DDE

R.T.: 7.655 min
 Delta R.T.: 0.004 min
 Response: 17678911
 Conc: 49.27 ng/ml



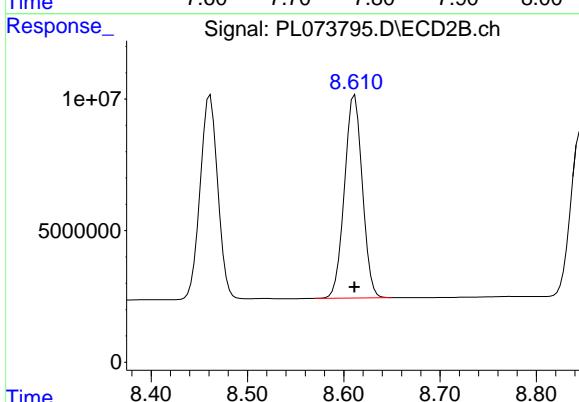
#12 4,4'-DDE

R.T.: 8.461 min
 Delta R.T.: 0.000 min
 Response: 98420232
 Conc: 54.91 ng/ml

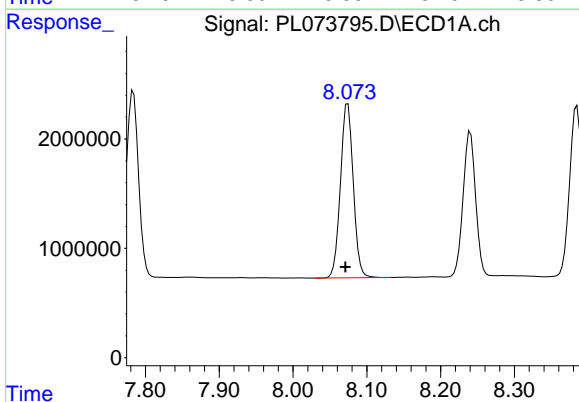


#13 Dieldrin
 R.T.: 7.784 min
 Delta R.T.: 0.004 min
 Response: 20255865
 Conc: 48.62 ng/ml

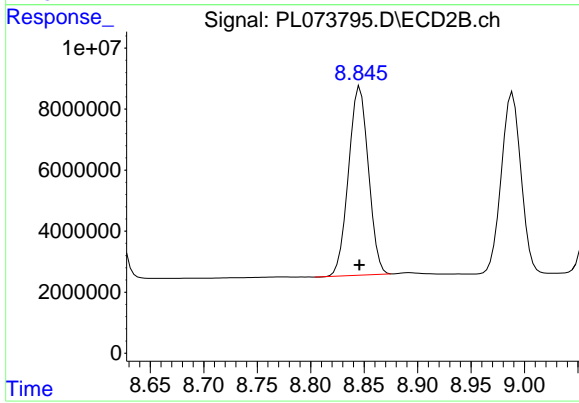
Instrument :
 ECD_L
 ClientSampleId :



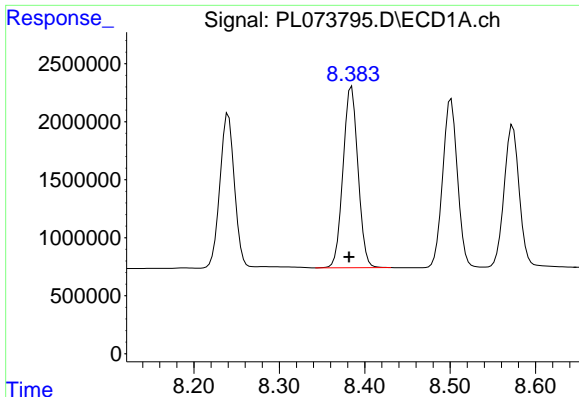
#13 Dieldrin
 R.T.: 8.611 min
 Delta R.T.: 0.000 min
 Response: 99052127
 Conc: 53.69 ng/ml



#14 Endrin
 R.T.: 8.074 min
 Delta R.T.: 0.003 min
 Response: 19232186
 Conc: 49.57 ng/ml



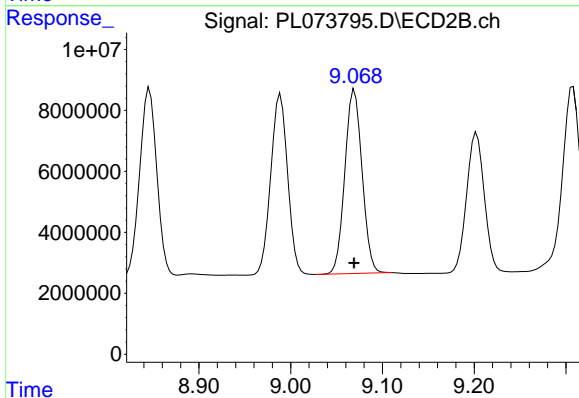
#14 Endrin
 R.T.: 8.846 min
 Delta R.T.: 0.000 min
 Response: 80219372
 Conc: 52.11 ng/ml



#15 Endosulfan II

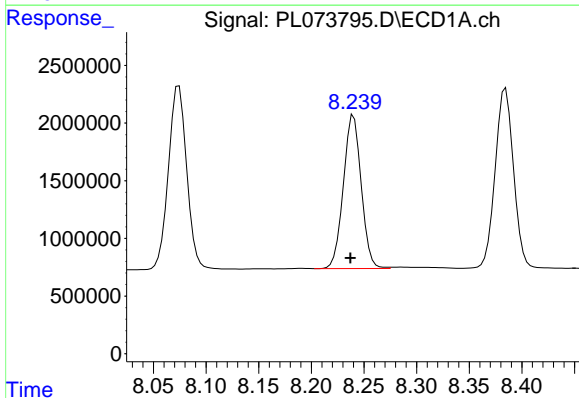
R.T.: 8.385 min
 Delta R.T.: 0.003 min
 Response: 18992320
 Conc: 48.59 ng/ml

Instrument :
 ECD_L
 ClientSampleId :



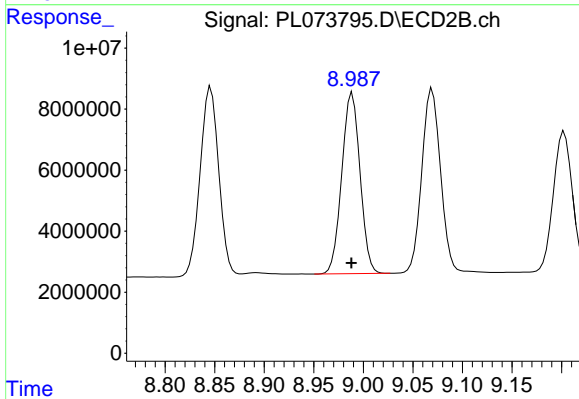
#15 Endosulfan II

R.T.: 9.069 min
 Delta R.T.: 0.000 min
 Response: 78625318
 Conc: 51.19 ng/ml



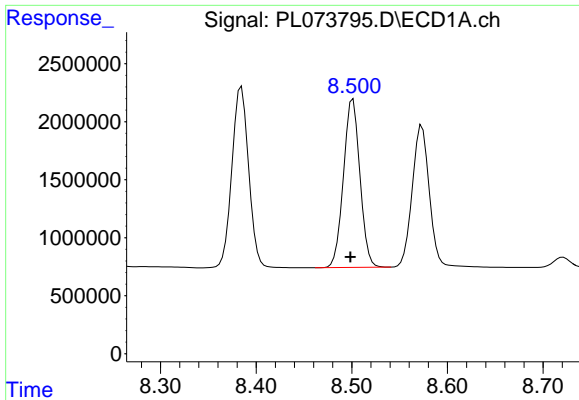
#16 4,4'-DDD

R.T.: 8.240 min
 Delta R.T.: 0.003 min
 Response: 15770836
 Conc: 48.56 ng/ml



#16 4,4'-DDD

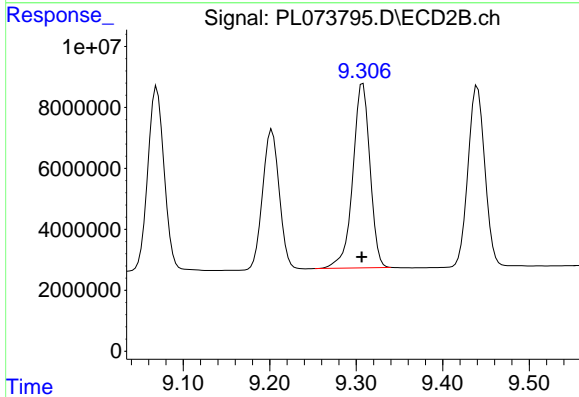
R.T.: 8.989 min
 Delta R.T.: 0.000 min
 Response: 75967391
 Conc: 52.04 ng/ml



#17 4,4'-DDT

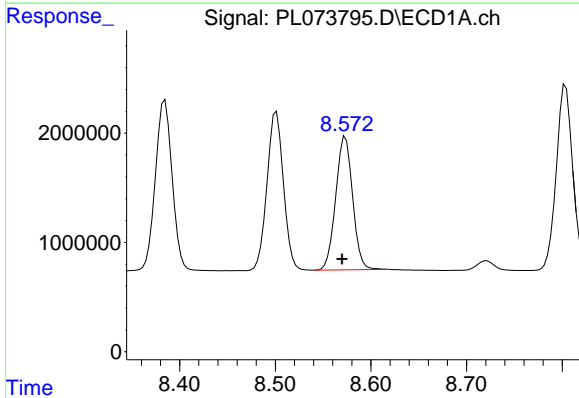
R.T.: 8.501 min
 Delta R.T.: 0.003 min
 Response: 17425311
 Conc: 46.08 ng/ml

Instrument :
 ECD_L
 ClientSampleId :



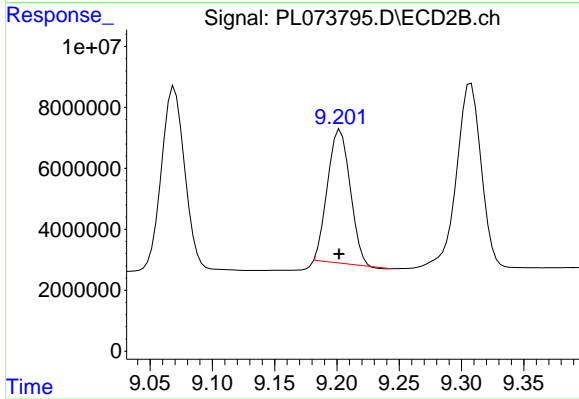
#17 4,4'-DDT

R.T.: 9.308 min
 Delta R.T.: 0.001 min
 Response: 83349321
 Conc: 50.99 ng/ml



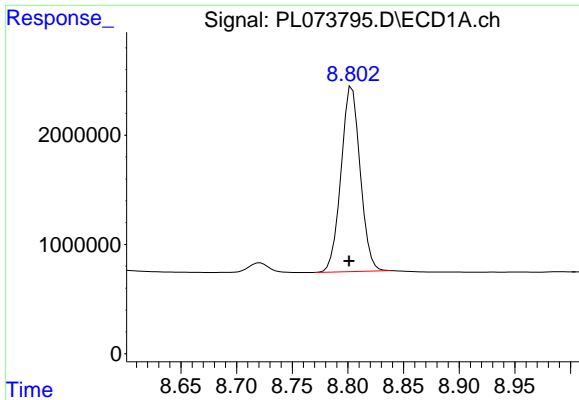
#18 Endrin aldehyde

R.T.: 8.573 min
 Delta R.T.: 0.003 min
 Response: 14969841
 Conc: 47.34 ng/ml



#18 Endrin aldehyde

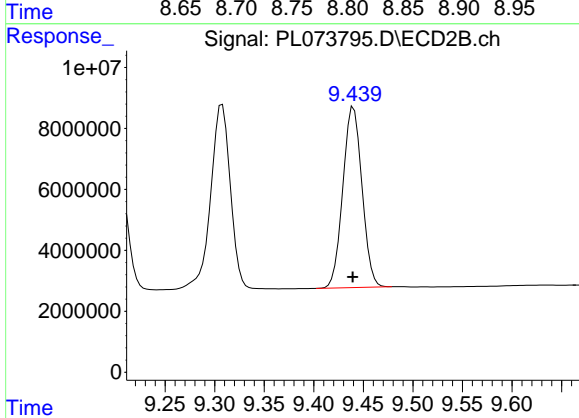
R.T.: 9.203 min
 Delta R.T.: 0.001 min
 Response: 55251395
 Conc: 45.05 ng/ml



#19 Endosulfan Sulfate

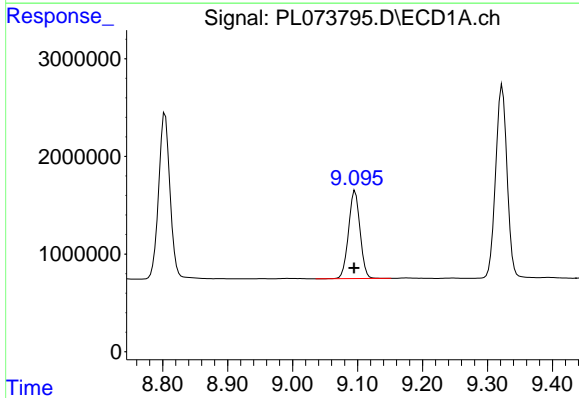
R.T.: 8.804 min
 Delta R.T.: 0.003 min
 Response: 20266053
 Conc: 47.98 ng/ml

Instrument :
 ECD_L
 ClientSampleId :



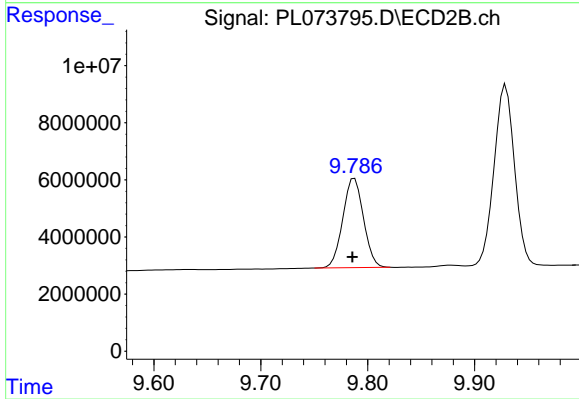
#19 Endosulfan Sulfate

R.T.: 9.440 min
 Delta R.T.: 0.000 min
 Response: 79871814
 Conc: 50.68 ng/ml



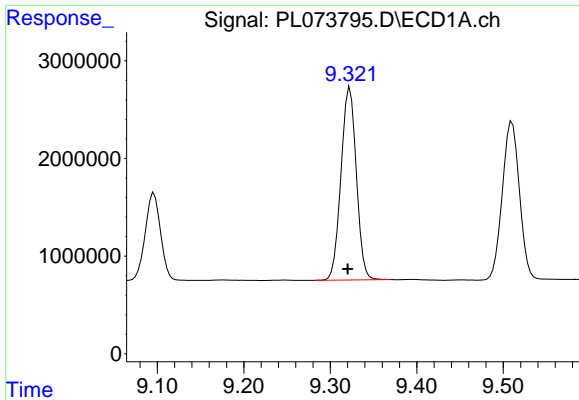
#20 Methoxychlor

R.T.: 9.096 min
 Delta R.T.: 0.002 min
 Response: 11097809
 Conc: 43.26 ng/ml



#20 Methoxychlor

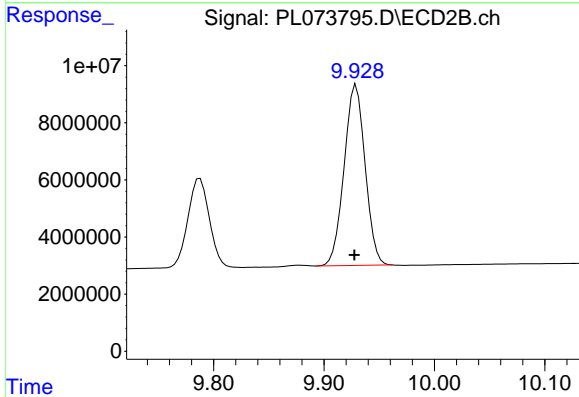
R.T.: 9.788 min
 Delta R.T.: 0.002 min
 Response: 42100691
 Conc: 46.72 ng/ml



#21 Endrin ketone

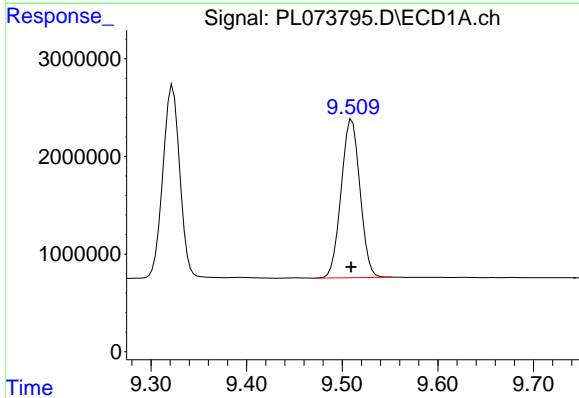
R.T.: 9.323 min
 Delta R.T.: 0.003 min
 Response: 24134363
 Conc: 49.33 ng/ml

Instrument :
 ECD_L
 ClientSampleId :



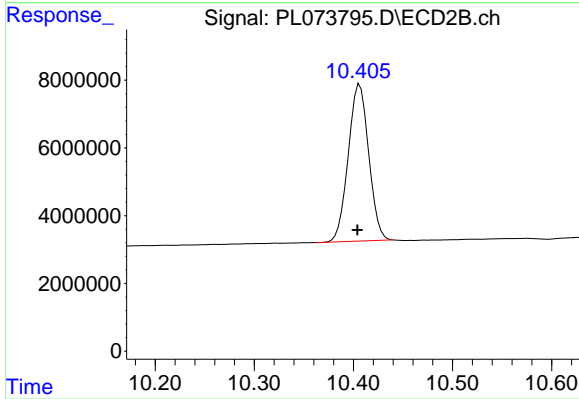
#21 Endrin ketone

R.T.: 9.929 min
 Delta R.T.: 0.001 min
 Response: 83787330
 Conc: 50.76 ng/ml



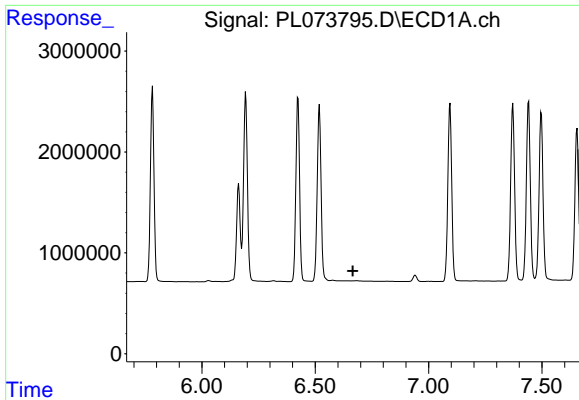
#22 Mirex

R.T.: 9.510 min
 Delta R.T.: 0.000 min
 Response: 22263267
 Conc: 47.21 ng/ml



#22 Mirex

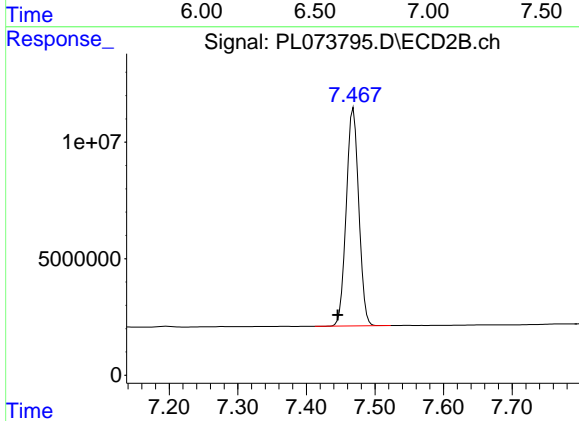
R.T.: 10.407 min
 Delta R.T.: 0.002 min
 Response: 66516524
 Conc: 48.96 ng/ml



#24 Chlordane-2

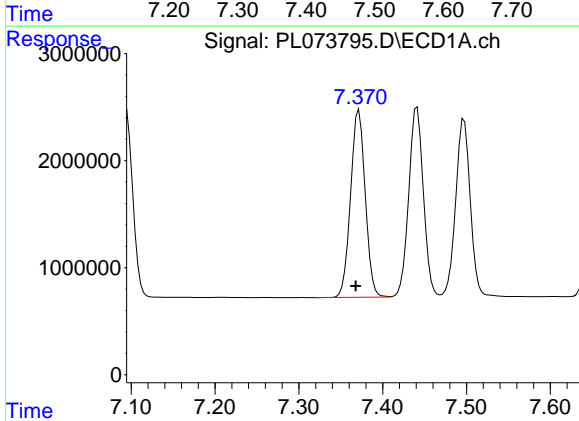
R.T.: 0.000 min
 Exp R.T.: 6.665 min
 Response: 0
 Conc: N.D.

Instrument :
 ECD_L
 ClientSampleId :



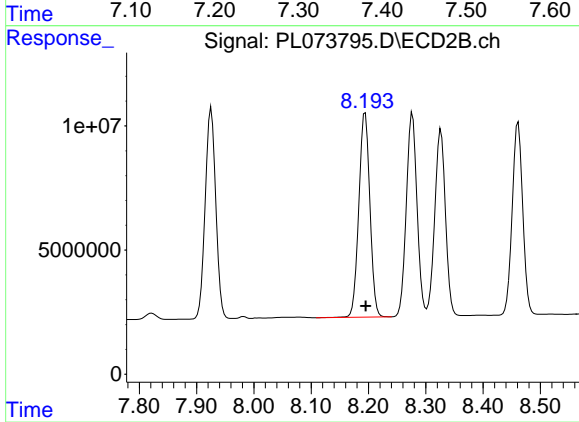
#24 Chlordane-2

R.T.: 7.468 min
 Delta R.T.: 0.023 min
 Response: 11856857
 Conc: 1649.68 ng/ml



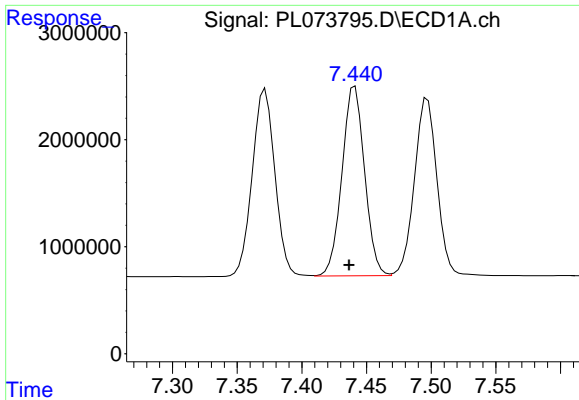
#25 Chlordane-3

R.T.: 7.372 min
 Delta R.T.: 0.004 min
 Response: 21316086
 Conc: 522.02 ng/ml



#25 Chlordane-3

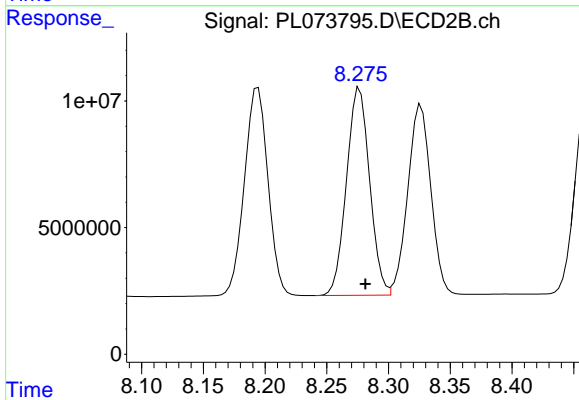
R.T.: 8.194 min
 Delta R.T.: 0.000 min
 Response: 109910245
 Conc: 405.38 ng/ml



#26 Chlordane-4

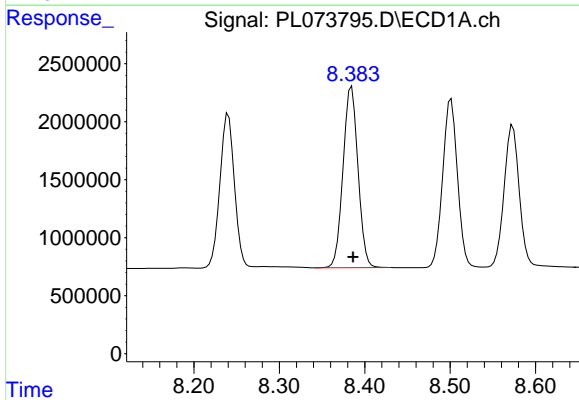
R.T.: 7.441 min
 Delta R.T.: 0.005 min
 Response: 21496241
 Conc: 485.01 ng/ml

Instrument :
 ECD_L
 ClientSampleId :



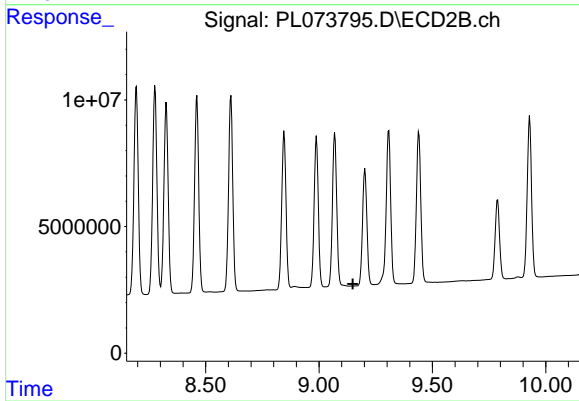
#26 Chlordane-4

R.T.: 8.277 min
 Delta R.T.: -0.005 min
 Response: 106967069
 Conc: 322.92 ng/ml



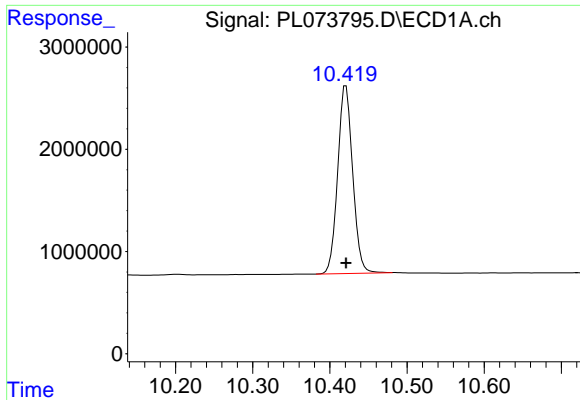
#27 Chlordane-5

R.T.: 8.385 min
 Delta R.T.: -0.002 min
 Response: 18992320
 Conc: 1159.82 ng/ml



#27 Chlordane-5

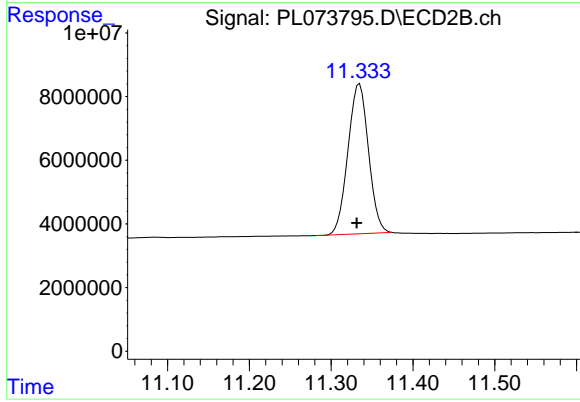
R.T.: 0.000 min
 Exp R.T.: 9.149 min
 Response: 0
 Conc: N.D.



#28 Decachlorobiphenyl

R.T.: 10.421 min
Delta R.T.: 0.000 min
Response: 24798951
Conc: 48.77 ng/ml

Instrument :
ECD_L
ClientSampleId :



#28 Decachlorobiphenyl

R.T.: 11.335 min
Delta R.T.: 0.003 min
Response: 81989210
Conc: 45.85 ng/ml