

Data Path : Z:\pestpcbsrv\HPCHEM1\ECD_L\Data\PL040521\
 Data File : PL065873.D
 Signal(s) : Signal #1: ECD1A.ch Signal #2: ECD2B.ch
 Acq On : 05 Apr 2021 13:41
 Operator : AR\AJ
 Sample : M1932-03DL 10X
 Misc :
 ALS Vial : 15 Sample Multiplier: 1

Instrument :
 ECD_L
 ClientSampleId :

Integration File signal 1: autoint1.e
 Integration File signal 2: autoint2.e
 Quant Time: Apr 05 14:50:31 2021
 Quant Method : Z:\pestpcbsrv\HPCHEM1\ECD_L\methods\PL033121.M
 Quant Title : GC Extractables
 QLast Update : Wed Mar 31 15:57:28 2021
 Response via : Initial Calibration
 Integrator: ChemStation

Volume Inj. : 1 µl
 Signal #1 Phase : ZB-MR2 Signal #2 Phase: ZB-MR1
 Signal #1 Info : 30M x 0.32mm x0.2 Signal #2 Info : 30M x 0.32mm x0.5µm

Compound	RT#1	RT#2	Resp#1	Resp#2	ng/ml	ng/ml

System Monitoring Compounds						
1) SA Tetrachlo...	3.276	3.780	6554599	5795170	2.516	2.111
28) SA Decachlor...	7.909	8.727	5773699	4907783	2.493	2.177
Target Compounds						
4) MA Heptachlor	4.231f	4.947f	1237432	1009701	0.344	0.286
6) B beta-BHC	4.231	4.630	1237432	8602390	0.776	4.939 #
8) B Heptachlo...	4.925	5.609	601781	6204394	0.191	1.998 #
10) B gamma-Chl...	5.147	5.842	841872	1371452	0.268	0.457 #
11) B alpha-Chl...	5.200	5.915	690902	3641320	0.222	1.231 #
12) B 4,4'-DDE	5.368	6.077	131.9E6	126.8E6	47.798	48.532
13) MA Dieldrin	5.488	6.217	9805362	8546107	3.356	3.032
14) MA Endrin	5.745	6.433	4397430	438333	1.629	0.176 #
15) B Endosulfa...	0.000	6.669f	0	863959	N.D.	0.366 #
16) A 4,4'-DDD	5.873	6.568	14128761	12389818	6.227	5.878
17) MA 4,4'-DDT	6.106	6.860	27297047	29635858	12.957	13.236
18) B Endrin al...	6.168	6.787	3580185	-67747	1.892	N.D. #
19) B Endosulfa...	6.395	7.001	764750	131595	0.296	0.054 #
20) A Methoxychlor	6.668	7.312	305007	247023	0.243	0.195
21) B Endrin ke...	6.864	7.461	637909	326097	0.233	0.127 #
25) Chlordane-3	5.147	5.842	841872	1371452	2.709	3.227
26) Chlordane-4	5.200	5.915	690902	3641320	2.420	7.198 #
27) Chlordane-5	0.000	6.716	0	213461	N.D.	2.560 #

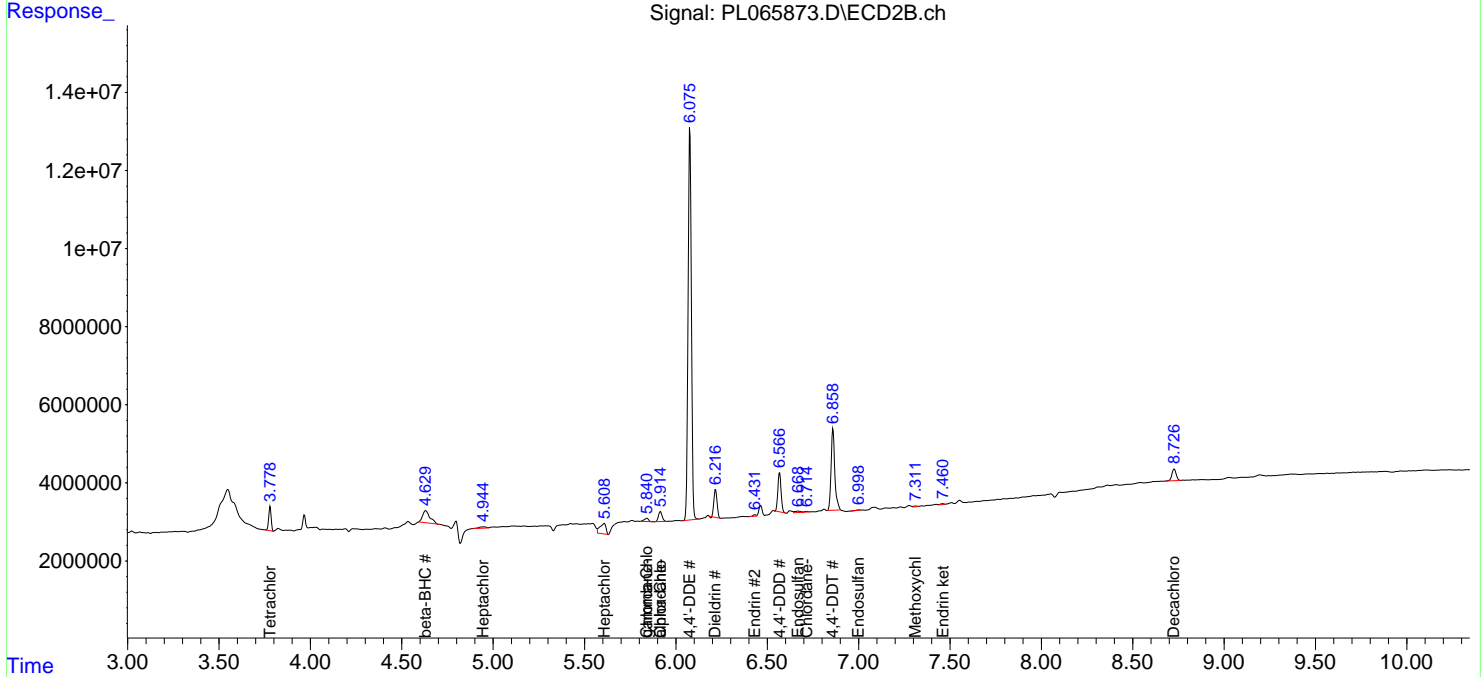
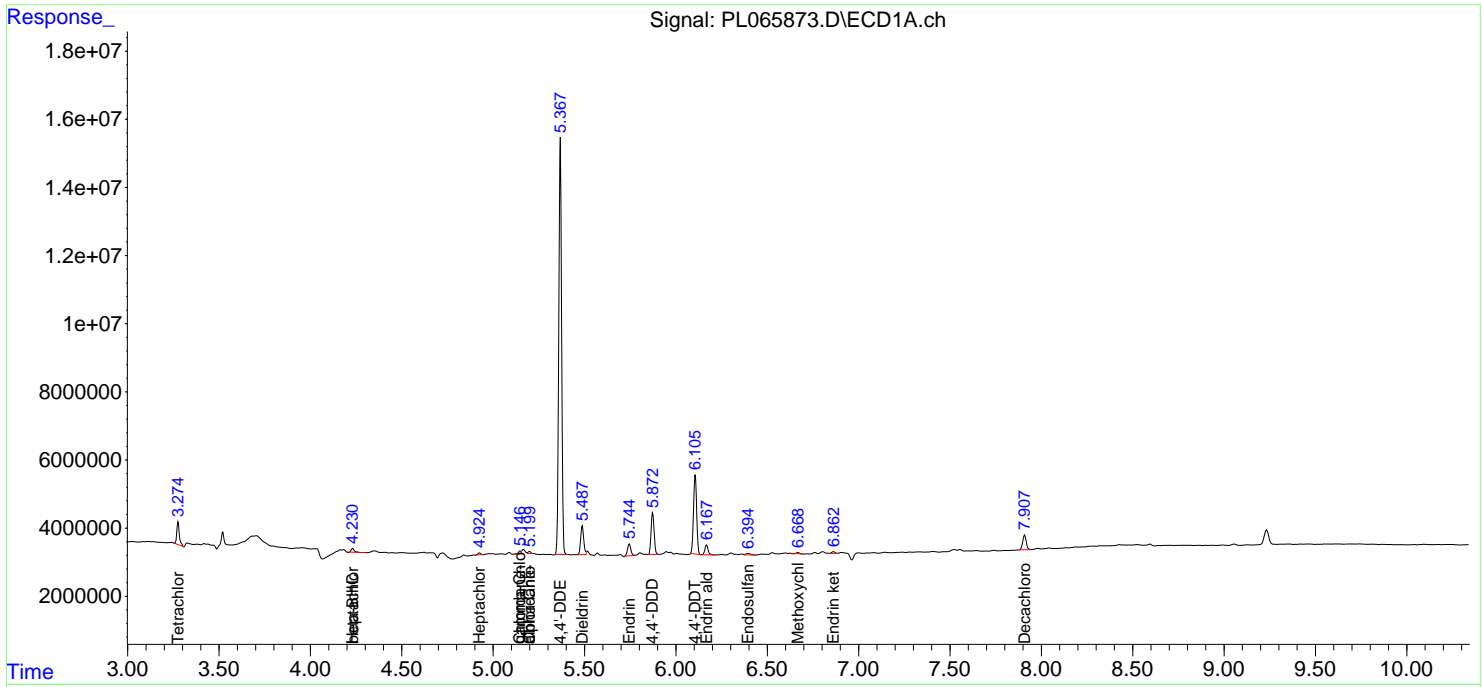
(f)=RT Delta > 1/2 Window (#)=Amounts differ by > 25% (m)=manual int.

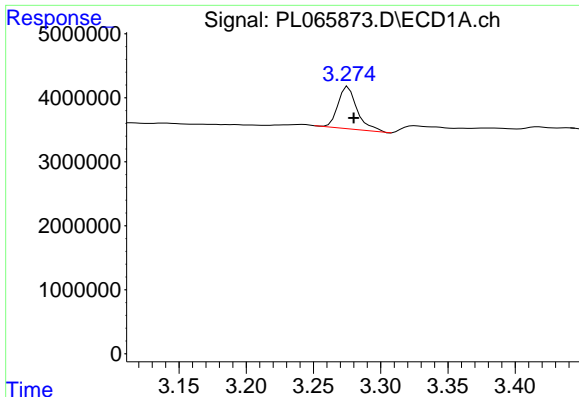
Data Path : Z:\pestpcbsrv\HPCHEM1\ECD_L\Data\PL040521\
 Data File : PL065873.D
 Signal(s) : Signal #1: ECD1A.ch Signal #2: ECD2B.ch
 Acq On : 05 Apr 2021 13:41
 Operator : AR\AJ
 Sample : M1932-03DL 10X
 Misc :
 ALS Vial : 15 Sample Multiplier: 1

Instrument :
 ECD_L
 ClientSampled :

Integration File signal 1: autoint1.e
 Integration File signal 2: autoint2.e
 Quant Time: Apr 05 14:50:31 2021
 Quant Method : Z:\pestpcbsrv\HPCHEM1\ECD_L\methods\PL033121.M
 Quant Title : GC Extractables
 QLast Update : Wed Mar 31 15:57:28 2021
 Response via : Initial Calibration
 Integrator: ChemStation

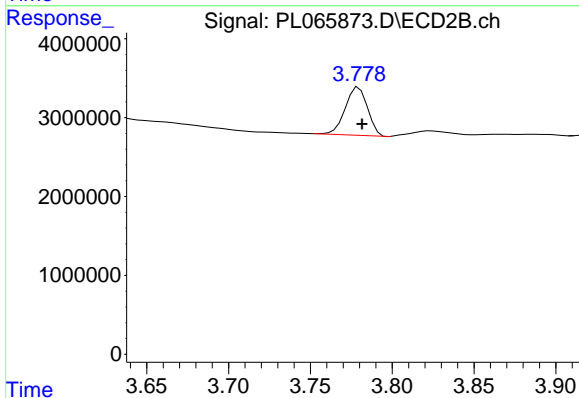
Volume Inj. : 1 µl
 Signal #1 Phase : ZB-MR2 Signal #2 Phase: ZB-MR1
 Signal #1 Info : 30M x 0.32mm x0.2 Signal #2 Info : 30M x 0.32mm x0.5µm



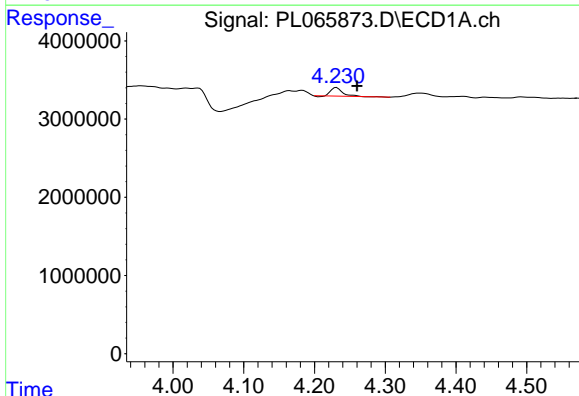


#1 Tetrachloro-m-xylene
 R.T.: 3.276 min
 Delta R.T.: -0.004 min
 Response: 6554599
 Conc: 2.52 ng/ml

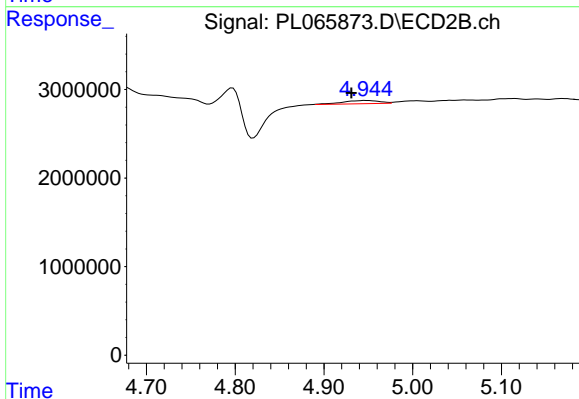
Instrument :
 ECD_L
 ClientSampled :



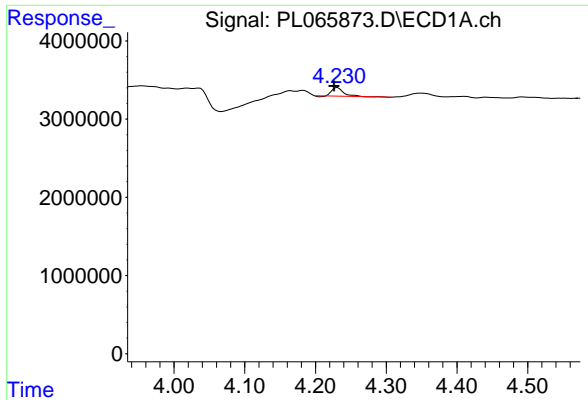
#1 Tetrachloro-m-xylene
 R.T.: 3.780 min
 Delta R.T.: -0.002 min
 Response: 5795170
 Conc: 2.11 ng/ml



#4 Heptachlor
 R.T.: 4.231 min
 Delta R.T.: -0.029 min
 Response: 1237432
 Conc: 0.34 ng/ml

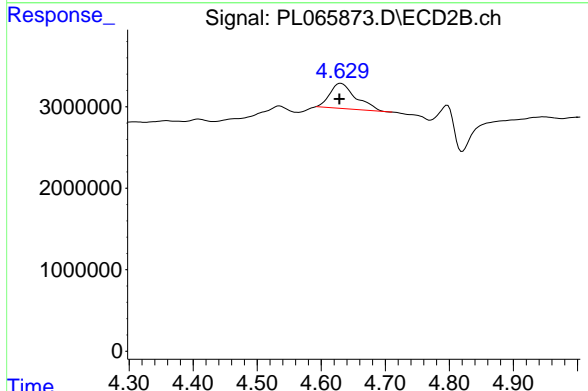


#4 Heptachlor
 R.T.: 4.947 min
 Delta R.T.: 0.016 min
 Response: 1009701
 Conc: 0.29 ng/ml

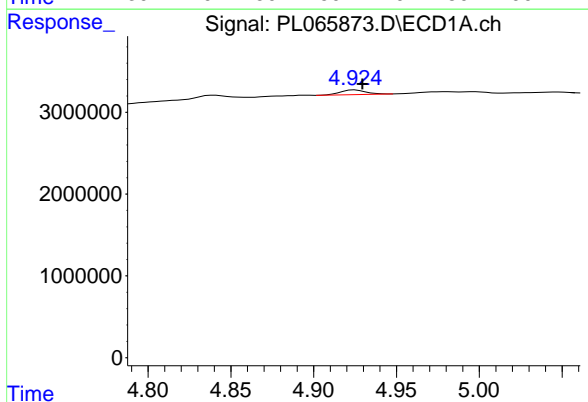


#6 beta-BHC
 R.T.: 4.231 min
 Delta R.T.: 0.005 min
 Response: 1237432
 Conc: 0.78 ng/ml

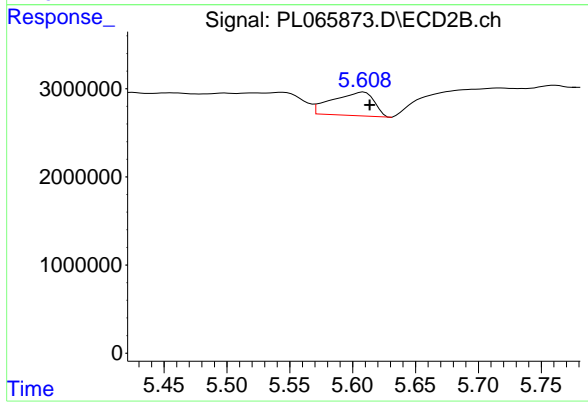
Instrument :
 ECD_L
 ClientSampled :



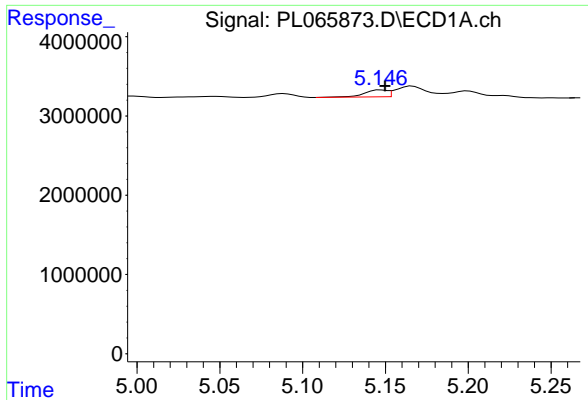
#6 beta-BHC
 R.T.: 4.630 min
 Delta R.T.: 0.002 min
 Response: 8602390
 Conc: 4.94 ng/ml



#8 Heptachlor epoxide
 R.T.: 4.925 min
 Delta R.T.: -0.005 min
 Response: 601781
 Conc: 0.19 ng/ml

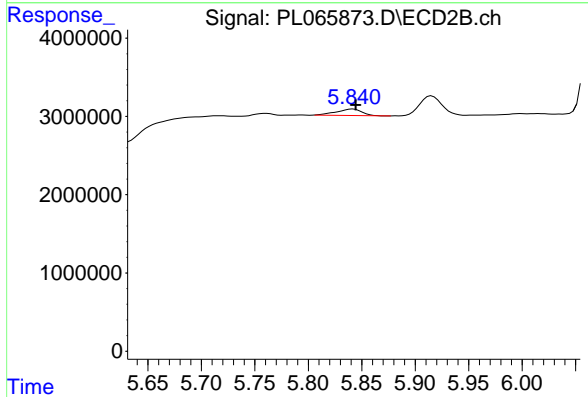


#8 Heptachlor epoxide
 R.T.: 5.609 min
 Delta R.T.: -0.005 min
 Response: 6204394
 Conc: 2.00 ng/ml

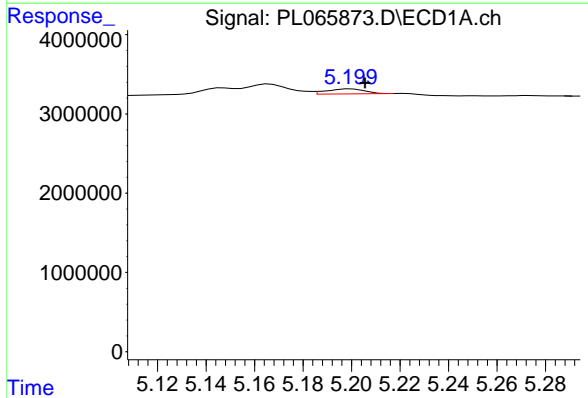


#10 gamma-Chlordane
 R.T.: 5.147 min
 Delta R.T.: -0.003 min
 Response: 841872
 Conc: 0.27 ng/ml

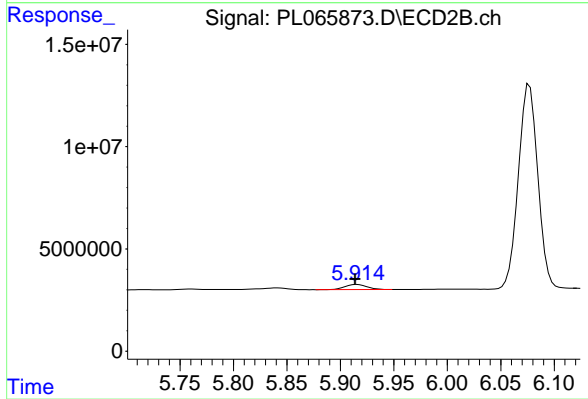
Instrument :
 ECD_L
 ClientSampleId :



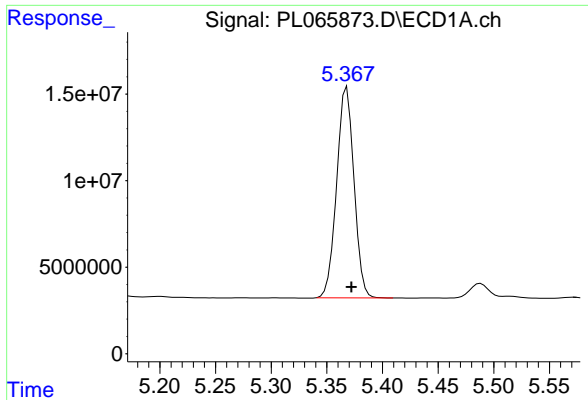
#10 gamma-Chlordane
 R.T.: 5.842 min
 Delta R.T.: -0.003 min
 Response: 1371452
 Conc: 0.46 ng/ml



#11 alpha-Chlordane
 R.T.: 5.200 min
 Delta R.T.: -0.006 min
 Response: 690902
 Conc: 0.22 ng/ml



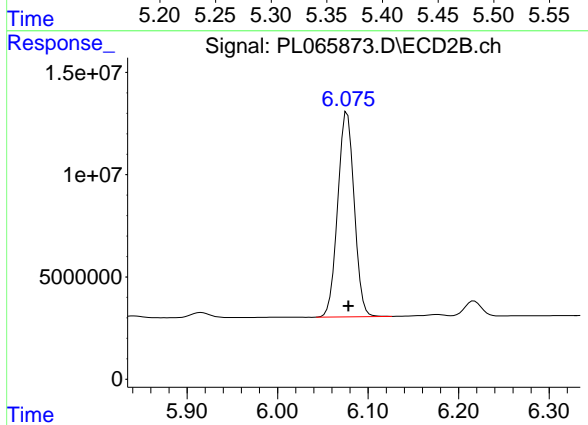
#11 alpha-Chlordane
 R.T.: 5.915 min
 Delta R.T.: 0.001 min
 Response: 3641320
 Conc: 1.23 ng/ml



#12 4,4'-DDE

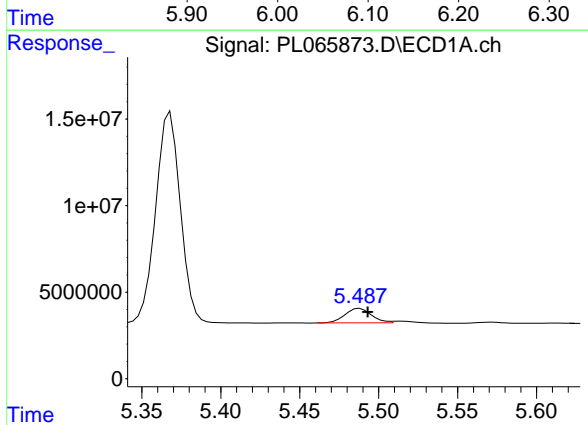
R.T.: 5.368 min
 Delta R.T.: -0.004 min
 Response: 131874752
 Conc: 47.80 ng/ml

Instrument :
 ECD_L
 ClientSampled :



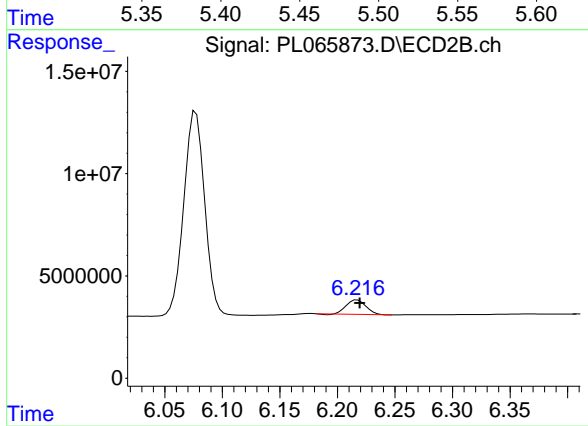
#12 4,4'-DDE

R.T.: 6.077 min
 Delta R.T.: -0.001 min
 Response: 126792134
 Conc: 48.53 ng/ml



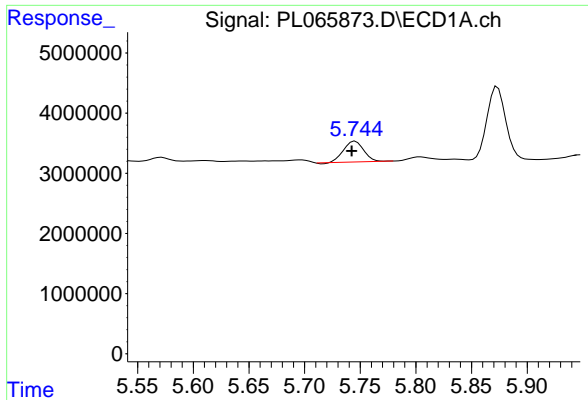
#13 Dieldrin

R.T.: 5.488 min
 Delta R.T.: -0.005 min
 Response: 9805362
 Conc: 3.36 ng/ml



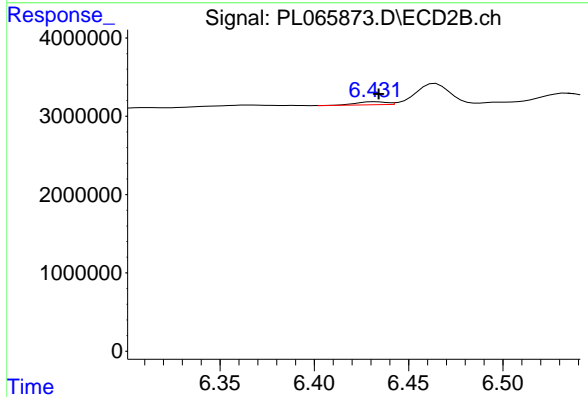
#13 Dieldrin

R.T.: 6.217 min
 Delta R.T.: -0.002 min
 Response: 8546107
 Conc: 3.03 ng/ml

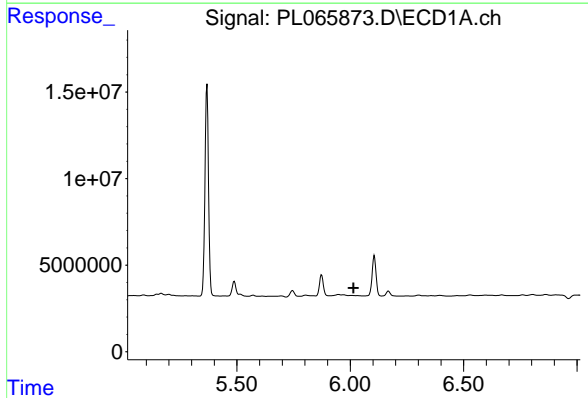


#14 Endrin
 R.T.: 5.745 min
 Delta R.T.: 0.003 min
 Response: 4397430
 Conc: 1.63 ng/ml

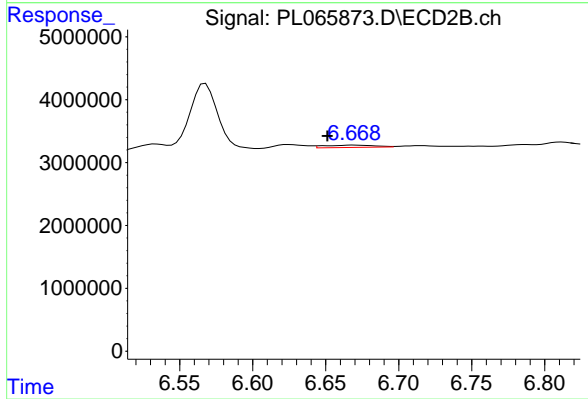
Instrument :
 ECD_L
 ClientSampled :



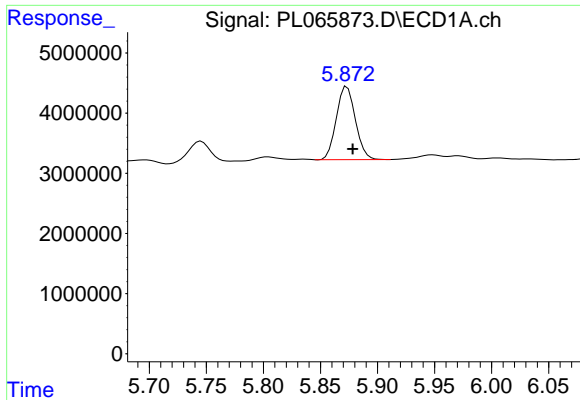
#14 Endrin
 R.T.: 6.433 min
 Delta R.T.: -0.002 min
 Response: 438333
 Conc: 0.18 ng/ml



#15 Endosulfan II
 R.T.: 0.000 min
 Exp R.T. : 6.015 min
 Response: 0
 Conc: N.D.

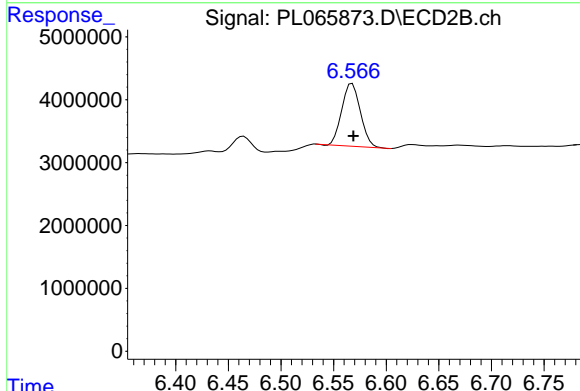


#15 Endosulfan II
 R.T.: 6.669 min
 Delta R.T.: 0.018 min
 Response: 863959
 Conc: 0.37 ng/ml

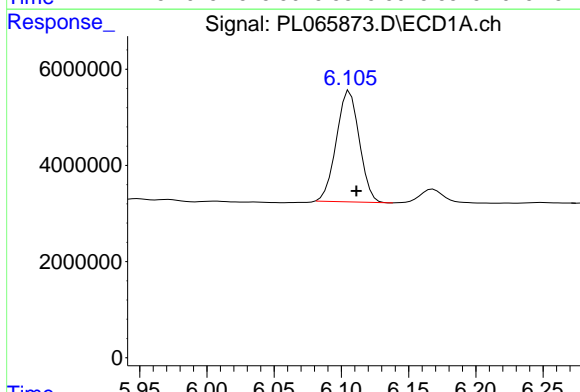


#16 4,4'-DDD
 R.T.: 5.873 min
 Delta R.T.: -0.005 min
 Response: 14128761
 Conc: 6.23 ng/ml

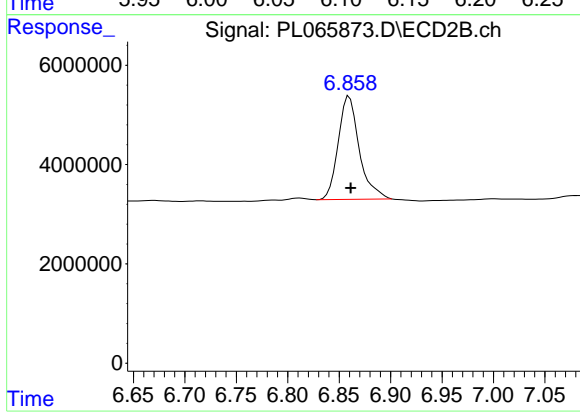
Instrument :
 ECD_L
 ClientSampled :



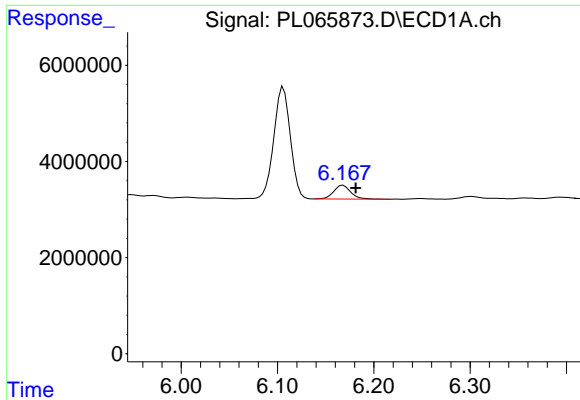
#16 4,4'-DDD
 R.T.: 6.568 min
 Delta R.T.: -0.001 min
 Response: 12389818
 Conc: 5.88 ng/ml



#17 4,4'-DDT
 R.T.: 6.106 min
 Delta R.T.: -0.005 min
 Response: 27297047
 Conc: 12.96 ng/ml

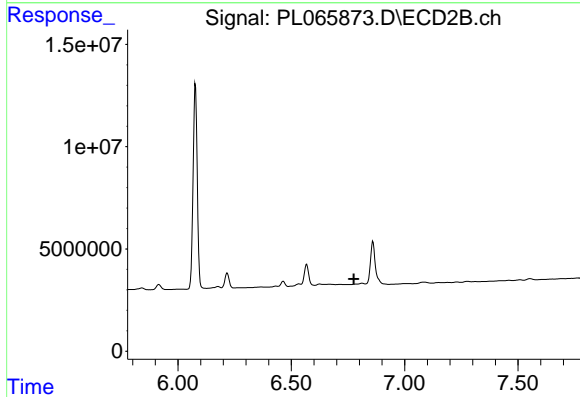


#17 4,4'-DDT
 R.T.: 6.860 min
 Delta R.T.: -0.002 min
 Response: 29635858
 Conc: 13.24 ng/ml

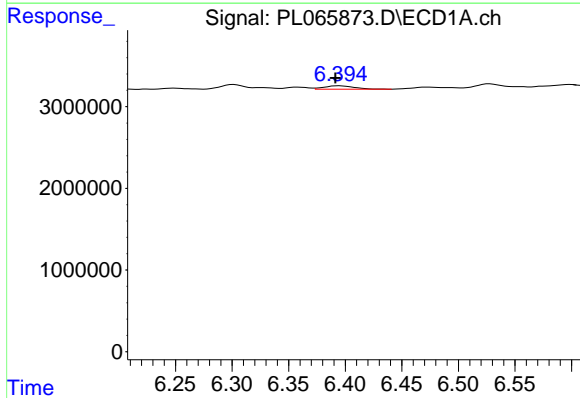


#18 Endrin aldehyde
 R.T.: 6.168 min
 Delta R.T.: -0.013 min
 Response: 3580185
 Conc: 1.89 ng/ml

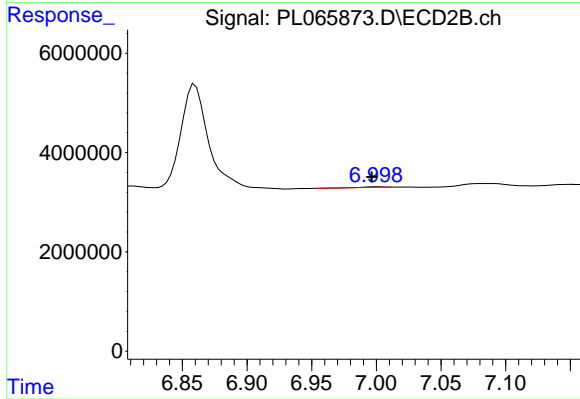
Instrument :
 ECD_L
 ClientSampleId :



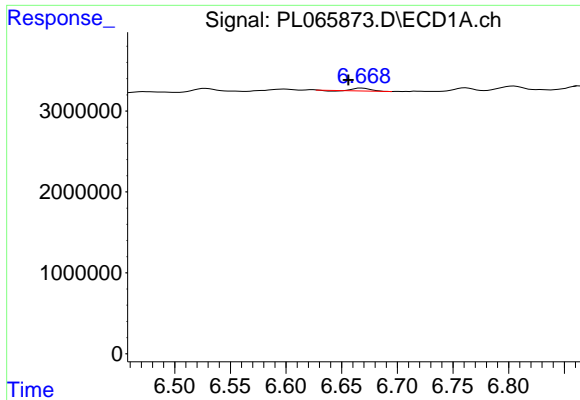
#18 Endrin aldehyde
 R.T.: 6.787 min
 Delta R.T.: 0.012 min
 Response: -67747
 Conc: N.D.



#19 Endosulfan Sulfate
 R.T.: 6.395 min
 Delta R.T.: 0.004 min
 Response: 764750
 Conc: 0.30 ng/ml

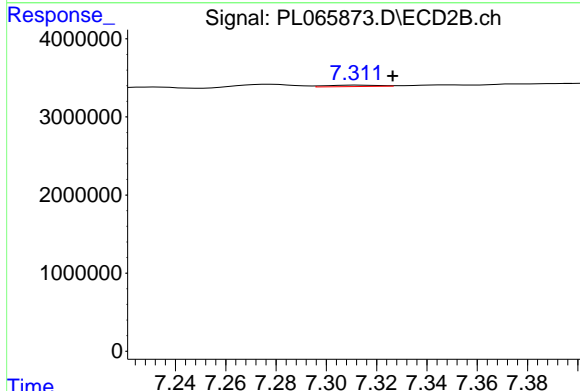


#19 Endosulfan Sulfate
 R.T.: 7.001 min
 Delta R.T.: 0.004 min
 Response: 131595
 Conc: 0.05 ng/ml

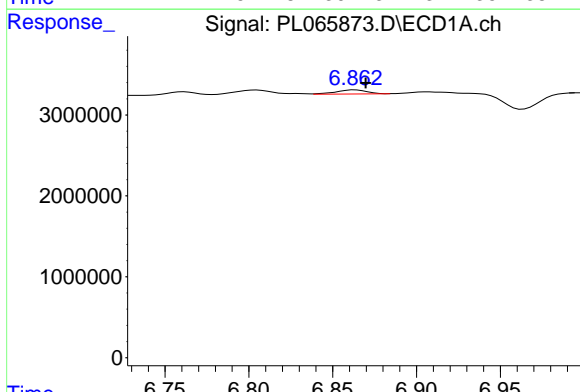


#20 Methoxychlor
 R.T.: 6.668 min
 Delta R.T.: 0.012 min
 Response: 305007
 Conc: 0.24 ng/ml

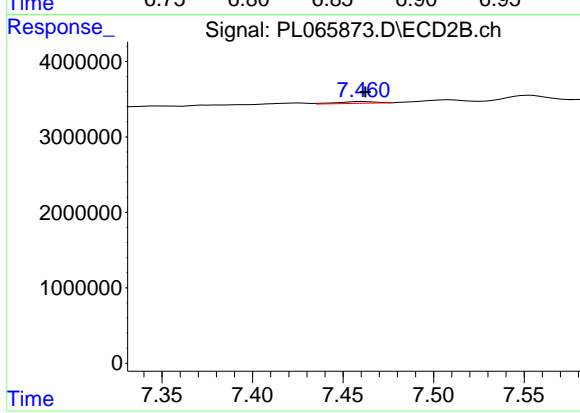
Instrument :
 ECD_L
 ClientSampleId :



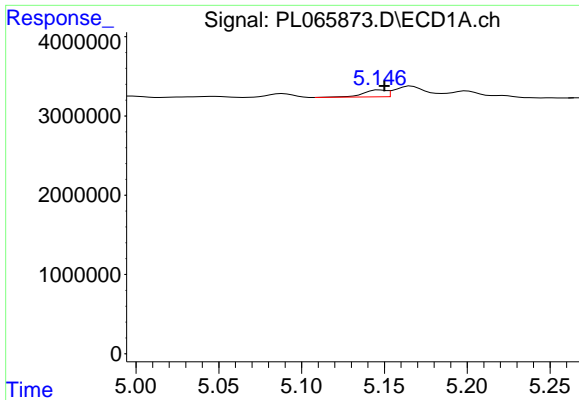
#20 Methoxychlor
 R.T.: 7.312 min
 Delta R.T.: -0.014 min
 Response: 247023
 Conc: 0.20 ng/ml



#21 Endrin ketone
 R.T.: 6.864 min
 Delta R.T.: -0.006 min
 Response: 637909
 Conc: 0.23 ng/ml

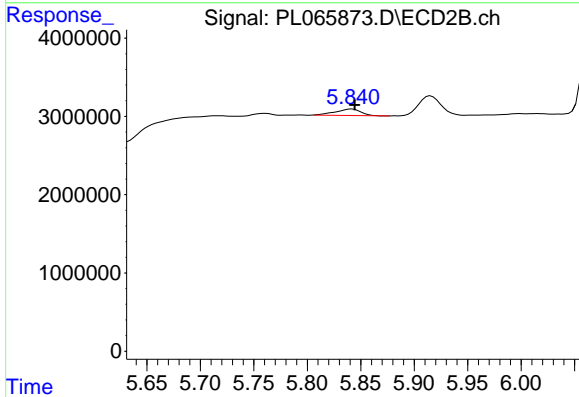


#21 Endrin ketone
 R.T.: 7.461 min
 Delta R.T.: -0.001 min
 Response: 326097
 Conc: 0.13 ng/ml

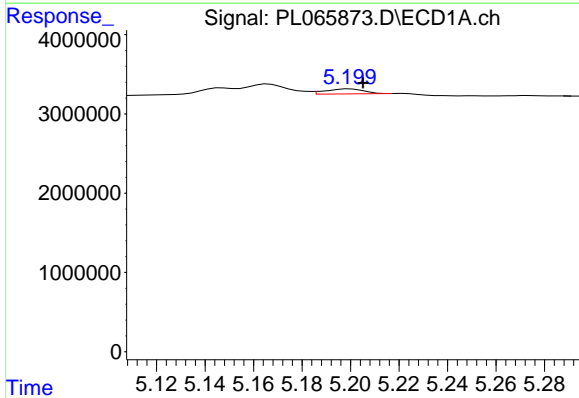


#25 Chlordane-3
 R.T.: 5.147 min
 Delta R.T.: -0.003 min
 Response: 841872
 Conc: 2.71 ng/ml

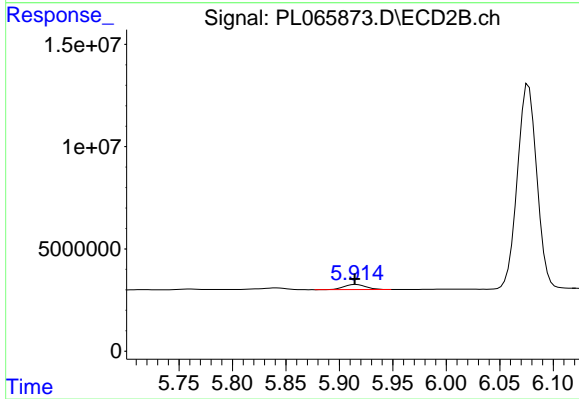
Instrument :
 ECD_L
 ClientSampled :



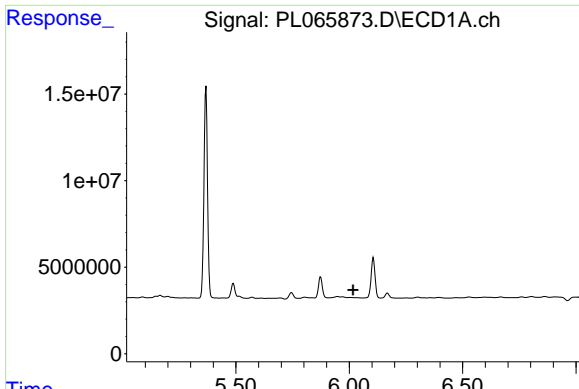
#25 Chlordane-3
 R.T.: 5.842 min
 Delta R.T.: -0.003 min
 Response: 1371452
 Conc: 3.23 ng/ml



#26 Chlordane-4
 R.T.: 5.200 min
 Delta R.T.: -0.005 min
 Response: 690902
 Conc: 2.42 ng/ml

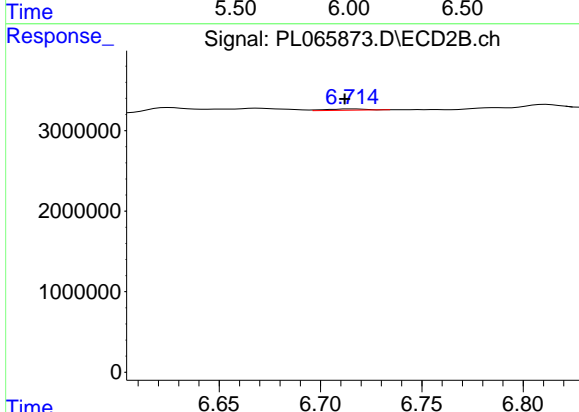


#26 Chlordane-4
 R.T.: 5.915 min
 Delta R.T.: 0.001 min
 Response: 3641320
 Conc: 7.20 ng/ml

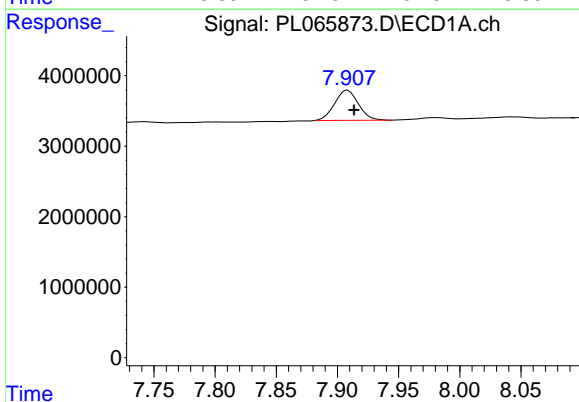


#27 Chlordane-5
 R.T.: 0.000 min
 Exp R.T.: 6.017 min
 Response: 0
 Conc: N.D.

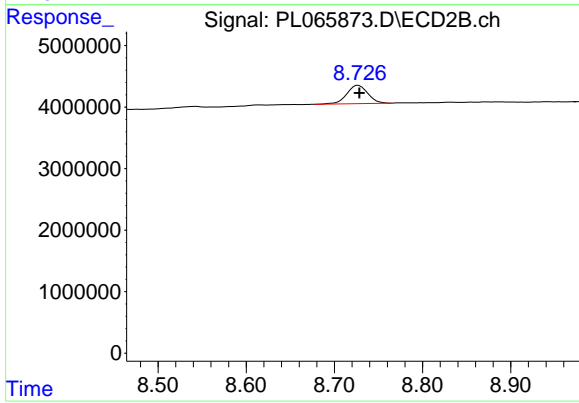
Instrument :
 ECD_L
 ClientSampleId :



#27 Chlordane-5
 R.T.: 6.716 min
 Delta R.T.: 0.004 min
 Response: 213461
 Conc: 2.56 ng/ml



#28 Decachlorobiphenyl
 R.T.: 7.909 min
 Delta R.T.: -0.005 min
 Response: 5773699
 Conc: 2.49 ng/ml



#28 Decachlorobiphenyl
 R.T.: 8.727 min
 Delta R.T.: -0.001 min
 Response: 4907783
 Conc: 2.18 ng/ml