

Data Path : Z:\pestpcbsrv\HPCHEM1\ECD_L\Data\PL040521\
 Data File : PL065881.D
 Signal(s) : Signal #1: ECD1A.ch Signal #2: ECD2B.ch
 Acq On : 05 Apr 2021 16:39
 Operator : AR\AJ
 Sample : PB135533BL
 Misc :
 ALS Vial : 23 Sample Multiplier: 1

Instrument :
 ECD_L
 ClientSampleId :
 PB135533BL

Integration File signal 1: autoint1.e
 Integration File signal 2: autoint2.e
 Quant Time: Apr 06 02:34:28 2021
 Quant Method : Z:\pestpcbsrv\HPCHEM1\ECD_L\methods\PL033121.M
 Quant Title : GC Extractables
 QLast Update : Wed Mar 31 15:57:28 2021
 Response via : Initial Calibration
 Integrator: ChemStation

Volume Inj. : 1 µl
 Signal #1 Phase : ZB-MR2 Signal #2 Phase: ZB-MR1
 Signal #1 Info : 30M x 0.32mm x0.2 Signal #2 Info : 30M x 0.32mm x0.5µm

Compound	RT#1	RT#2	Resp#1	Resp#2	ng/ml	ng/ml

System Monitoring Compounds						
1) SA Tetrachlo...	3.281	3.781	51543565	55212570	19.786	20.114
28) SA Decachlor...	7.914	8.730	52540069	48464244	22.685	21.496

Target Compounds

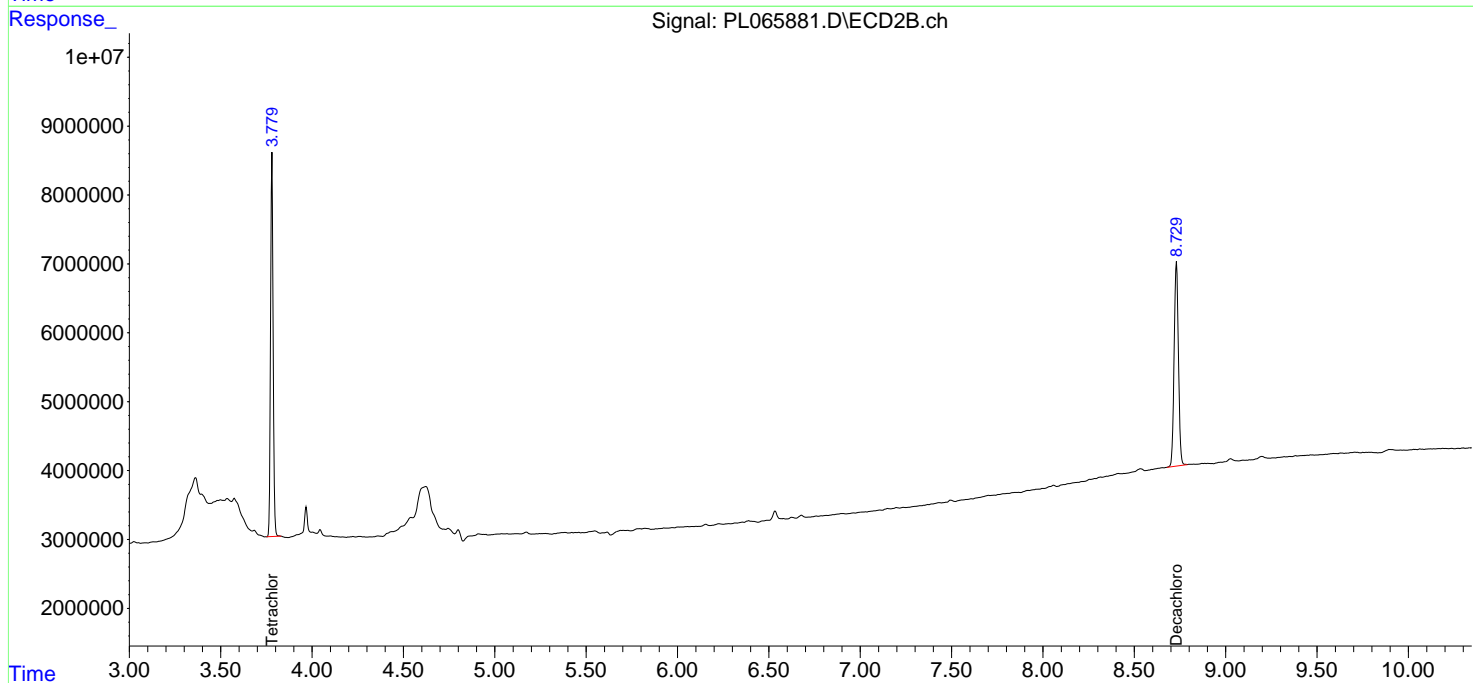
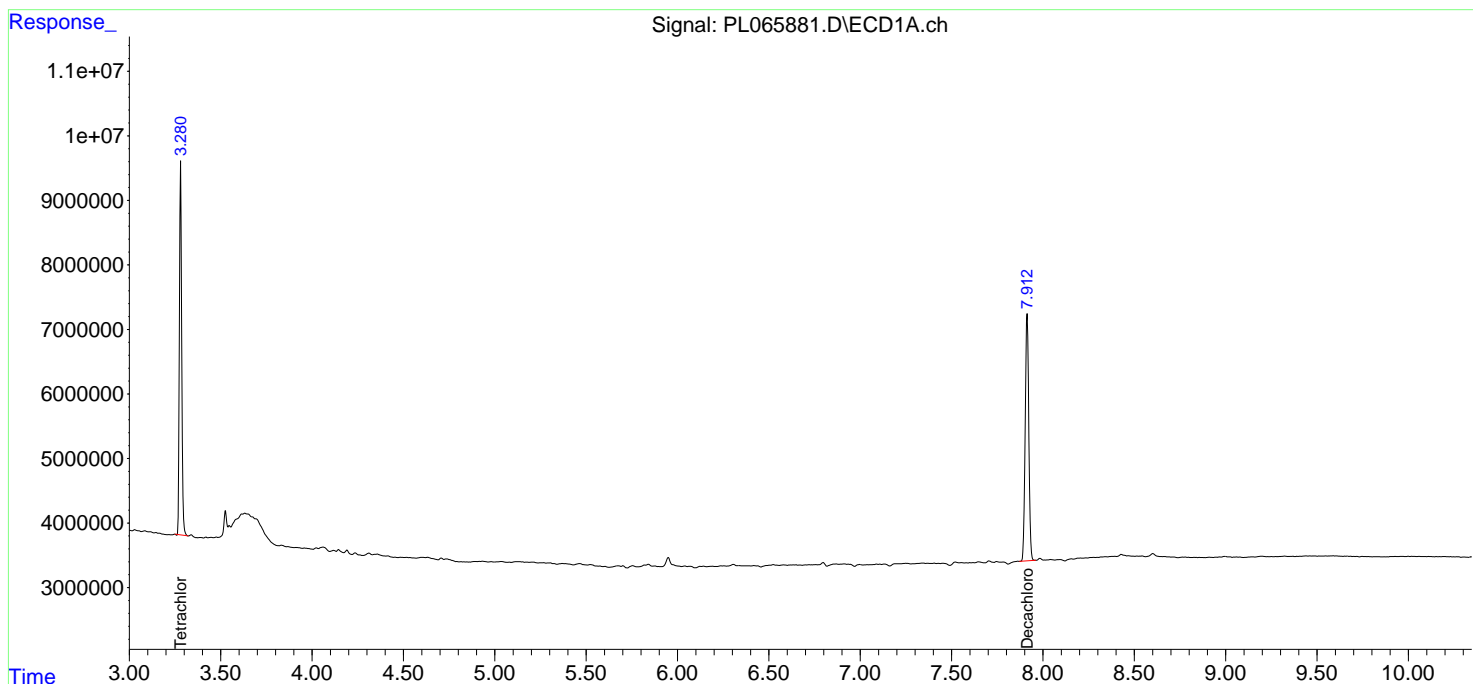
(f)=RT Delta > 1/2 Window (#)=Amounts differ by > 25% (m)=manual int.

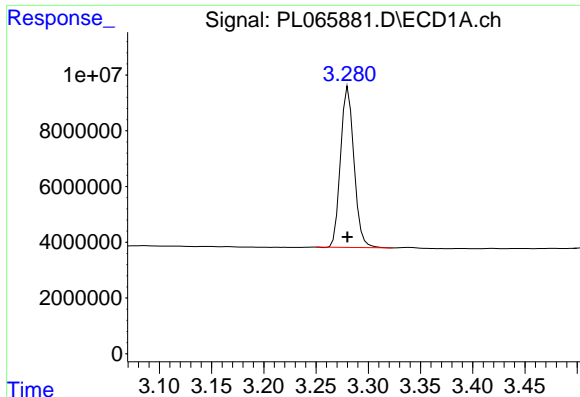
Data Path : Z:\pestpcbsrv\HPCHEM1\ECD_L\Data\PL040521\
 Data File : PL065881.D
 Signal(s) : Signal #1: ECD1A.ch Signal #2: ECD2B.ch
 Acq On : 05 Apr 2021 16:39
 Operator : AR\AJ
 Sample : PB135533BL
 Misc :
 ALS Vial : 23 Sample Multiplier: 1

Instrument :
 ECD_L
 ClientSampleID :
 PB135533BL

Integration File signal 1: autoint1.e
 Integration File signal 2: autoint2.e
 Quant Time: Apr 06 02:34:28 2021
 Quant Method : Z:\pestpcbsrv\HPCHEM1\ECD_L\methods\PL033121.M
 Quant Title : GC Extractables
 QLast Update : Wed Mar 31 15:57:28 2021
 Response via : Initial Calibration
 Integrator: ChemStation

Volume Inj. : 1 µl
 Signal #1 Phase : ZB-MR2 Signal #2 Phase: ZB-MR1
 Signal #1 Info : 30M x 0.32mm x0.2 Signal #2 Info : 30M x 0.32mm x0.5µm

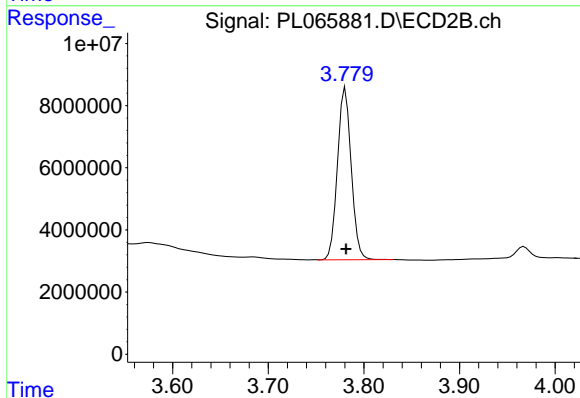




#1 Tetrachloro-m-xylene

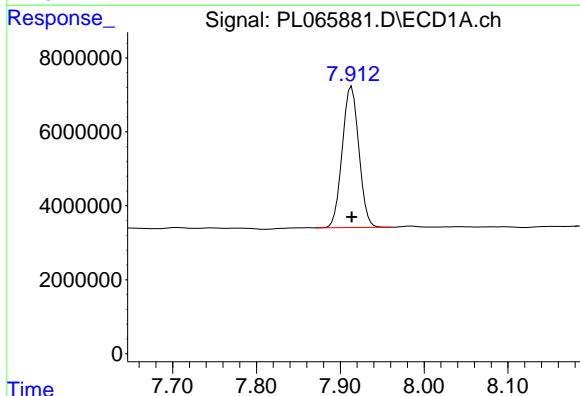
R.T.: 3.281 min
 Delta R.T.: 0.000 min
 Response: 51543565
 Conc: 19.79 ng/ml

Instrument :
 ECD_L
 ClientSampleId :
 PB135533BL



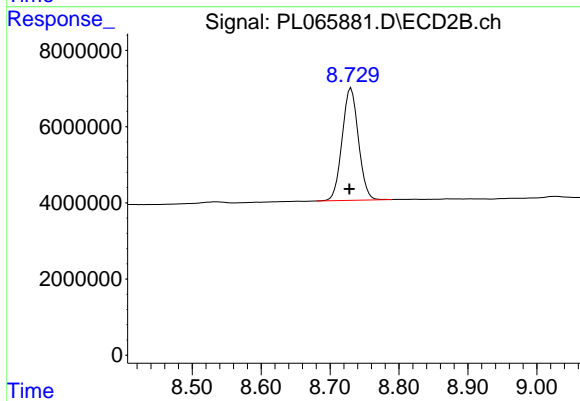
#1 Tetrachloro-m-xylene

R.T.: 3.781 min
 Delta R.T.: 0.000 min
 Response: 55212570
 Conc: 20.11 ng/ml



#28 Decachlorobiphenyl

R.T.: 7.914 min
 Delta R.T.: 0.000 min
 Response: 52540069
 Conc: 22.69 ng/ml



#28 Decachlorobiphenyl

R.T.: 8.730 min
 Delta R.T.: 0.002 min
 Response: 48464244
 Conc: 21.50 ng/ml