

Data Path : Z:\pestpcbsrv\HPCHEM1\ECD\_L\Data\PL040521\  
 Data File : PL065883.D  
 Signal(s) : Signal #1: ECD1A.ch Signal #2: ECD2B.ch  
 Acq On : 05 Apr 2021 17:07  
 Operator : AR\AJ  
 Sample : PB135533TB  
 Misc :  
 ALS Vial : 25 Sample Multiplier: 1

Instrument :  
 ECD\_L  
 ClientSampleId :  
 PB135533TB

Integration File signal 1: autoint1.e  
 Integration File signal 2: autoint2.e  
 Quant Time: Apr 06 02:35:03 2021  
 Quant Method : Z:\pestpcbsrv\HPCHEM1\ECD\_L\methods\PL033121.M  
 Quant Title : GC Extractables  
 QLast Update : Wed Mar 31 15:57:28 2021  
 Response via : Initial Calibration  
 Integrator: ChemStation

Volume Inj. : 1 µl  
 Signal #1 Phase : ZB-MR2 Signal #2 Phase: ZB-MR1  
 Signal #1 Info : 30M x 0.32mm x0.2 Signal #2 Info : 30M x 0.32mm x0.5µm

Compound	RT#1	RT#2	Resp#1	Resp#2	ng/ml	ng/ml
-----						
System Monitoring Compounds						
1) SA Tetrachlo...	3.276	3.780	50948025	54326388	19.558	19.791
28) SA Decachlor...	7.908	8.728	51010607	46589810	22.025	20.665

Target Compounds

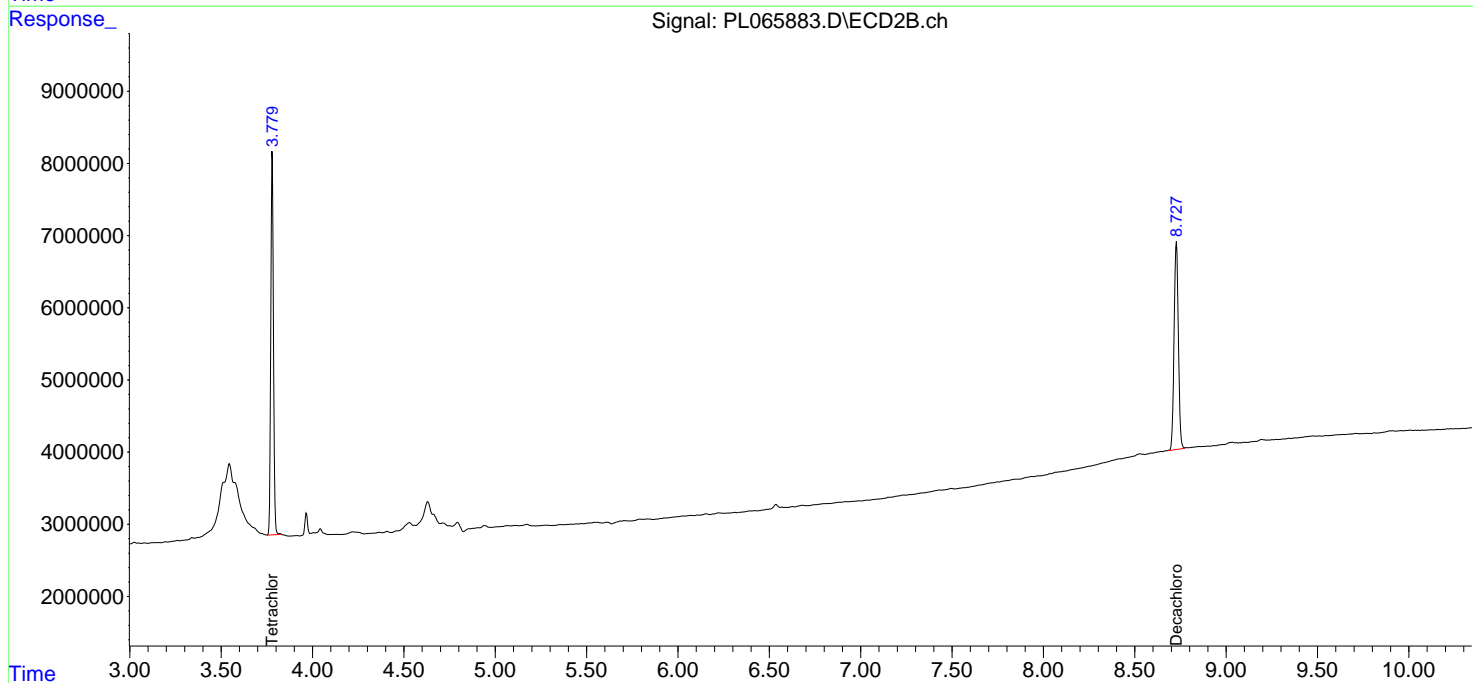
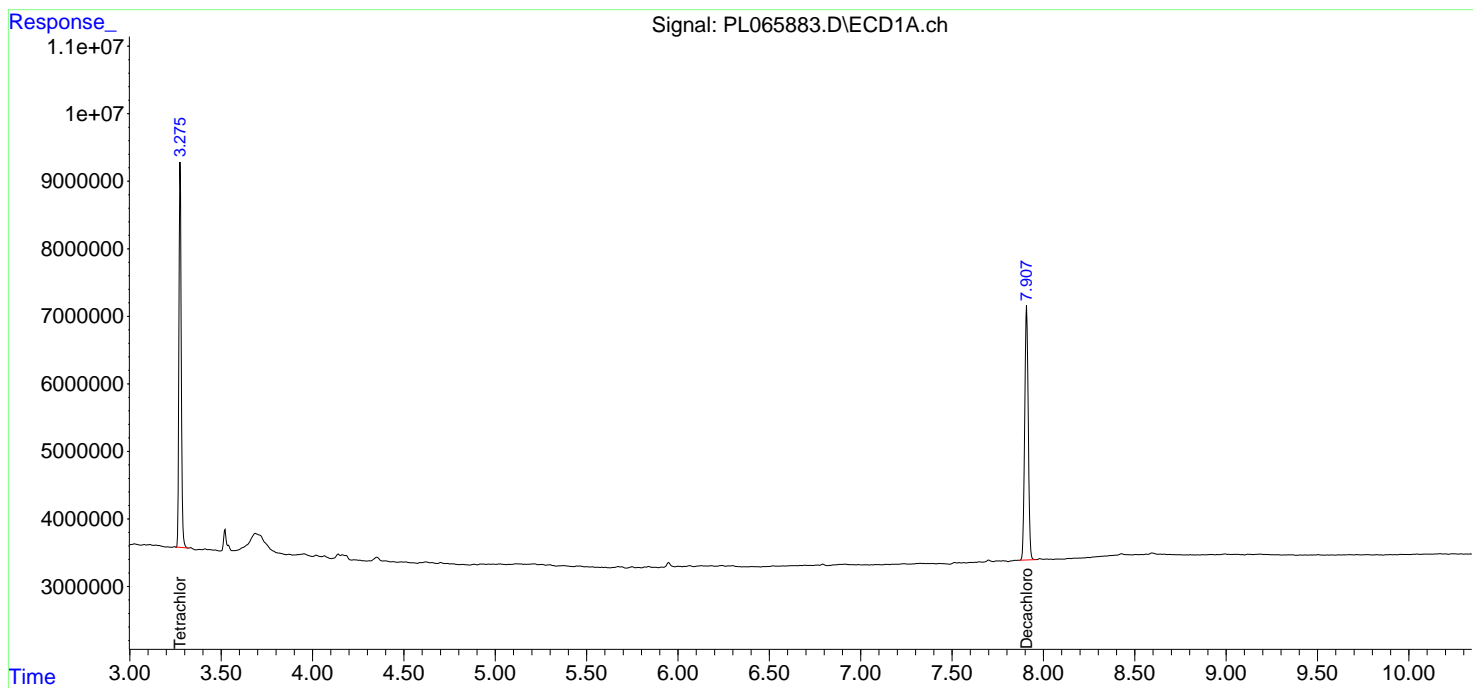
(f)=RT Delta > 1/2 Window (#)=Amounts differ by > 25% (m)=manual int.

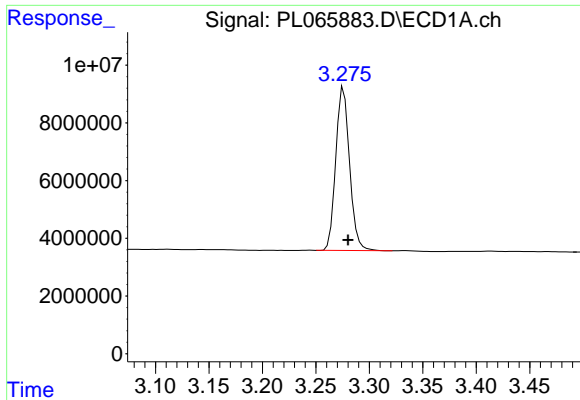
Data Path : Z:\pestpcbsrv\HPCHEM1\ECD\_L\Data\PL040521\  
 Data File : PL065883.D  
 Signal(s) : Signal #1: ECD1A.ch Signal #2: ECD2B.ch  
 Acq On : 05 Apr 2021 17:07  
 Operator : AR\AJ  
 Sample : PB135533TB  
 Misc :  
 ALS Vial : 25 Sample Multiplier: 1

Instrument :  
 ECD\_L  
 ClientSampled :  
 PB135533TB

Integration File signal 1: autoint1.e  
 Integration File signal 2: autoint2.e  
 Quant Time: Apr 06 02:35:03 2021  
 Quant Method : Z:\pestpcbsrv\HPCHEM1\ECD\_L\methods\PL033121.M  
 Quant Title : GC Extractables  
 QLast Update : Wed Mar 31 15:57:28 2021  
 Response via : Initial Calibration  
 Integrator: ChemStation

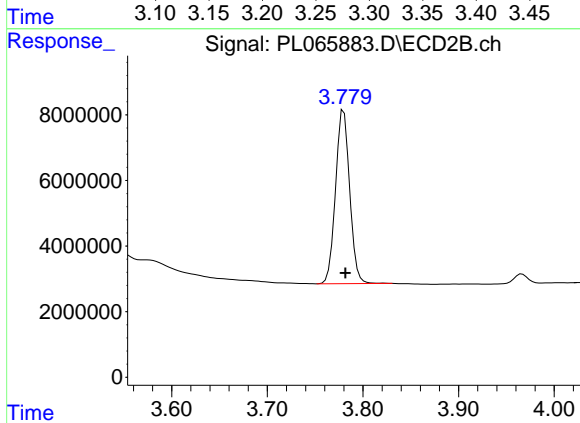
Volume Inj. : 1 µl  
 Signal #1 Phase : ZB-MR2 Signal #2 Phase: ZB-MR1  
 Signal #1 Info : 30M x 0.32mm x0.2 Signal #2 Info : 30M x 0.32mm x0.5µm



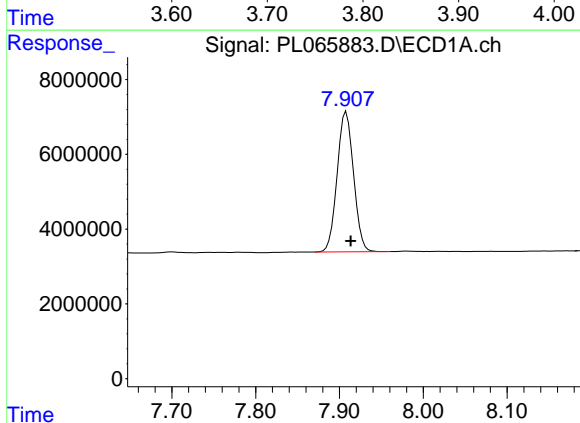


#1 Tetrachloro-m-xylene  
 R.T.: 3.276 min  
 Delta R.T.: -0.004 min  
 Response: 50948025  
 Conc: 19.56 ng/ml

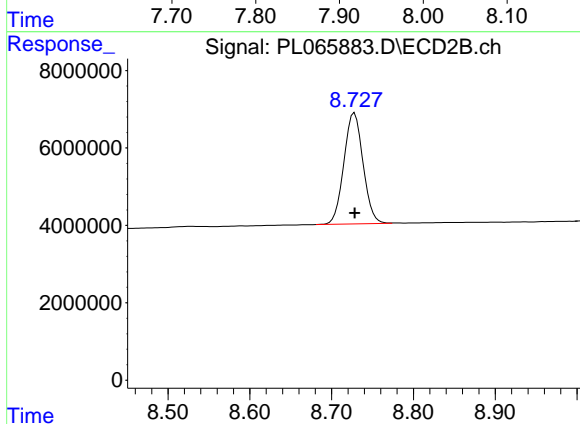
Instrument :  
 ECD\_L  
 ClientSampleId :  
 PB135533TB



#1 Tetrachloro-m-xylene  
 R.T.: 3.780 min  
 Delta R.T.: -0.002 min  
 Response: 54326388  
 Conc: 19.79 ng/ml



#28 Decachlorobiphenyl  
 R.T.: 7.908 min  
 Delta R.T.: -0.005 min  
 Response: 51010607  
 Conc: 22.03 ng/ml



#28 Decachlorobiphenyl  
 R.T.: 8.728 min  
 Delta R.T.: 0.000 min  
 Response: 46589810  
 Conc: 20.67 ng/ml