

Data Path : Z:\pestpcbsrv\HPCHEM1\ECD_L\Data\PL040521\
 Data File : PL065885.D
 Signal(s) : Signal #1: ECD1A.ch Signal #2: ECD2B.ch
 Acq On : 05 Apr 2021 17:36
 Operator : AR\AJ
 Sample : M1924-01
 Misc :
 ALS Vial : 27 Sample Multiplier: 1

Instrument :
 ECD_L
 ClientSampleId :
 NB-07-040221

Integration File signal 1: autoint1.e
 Integration File signal 2: autoint2.e
 Quant Time: Apr 06 02:35:46 2021
 Quant Method : Z:\pestpcbsrv\HPCHEM1\ECD_L\methods\PL033121.M
 Quant Title : GC Extractables
 QLast Update : Wed Mar 31 15:57:28 2021
 Response via : Initial Calibration
 Integrator: ChemStation

Volume Inj. : 1 µl
 Signal #1 Phase : ZB-MR2 Signal #2 Phase: ZB-MR1
 Signal #1 Info : 30M x 0.32mm x0.2 Signal #2 Info : 30M x 0.32mm x0.5µm

Compound	RT#1	RT#2	Resp#1	Resp#2	ng/ml	ng/ml

System Monitoring Compounds						
1) SA Tetrachlo...	3.276	3.780	32694373	36261397	12.551	13.210
28) SA Decachlor...	7.908	8.728	40168607	35140936	17.344	15.587

Target Compounds

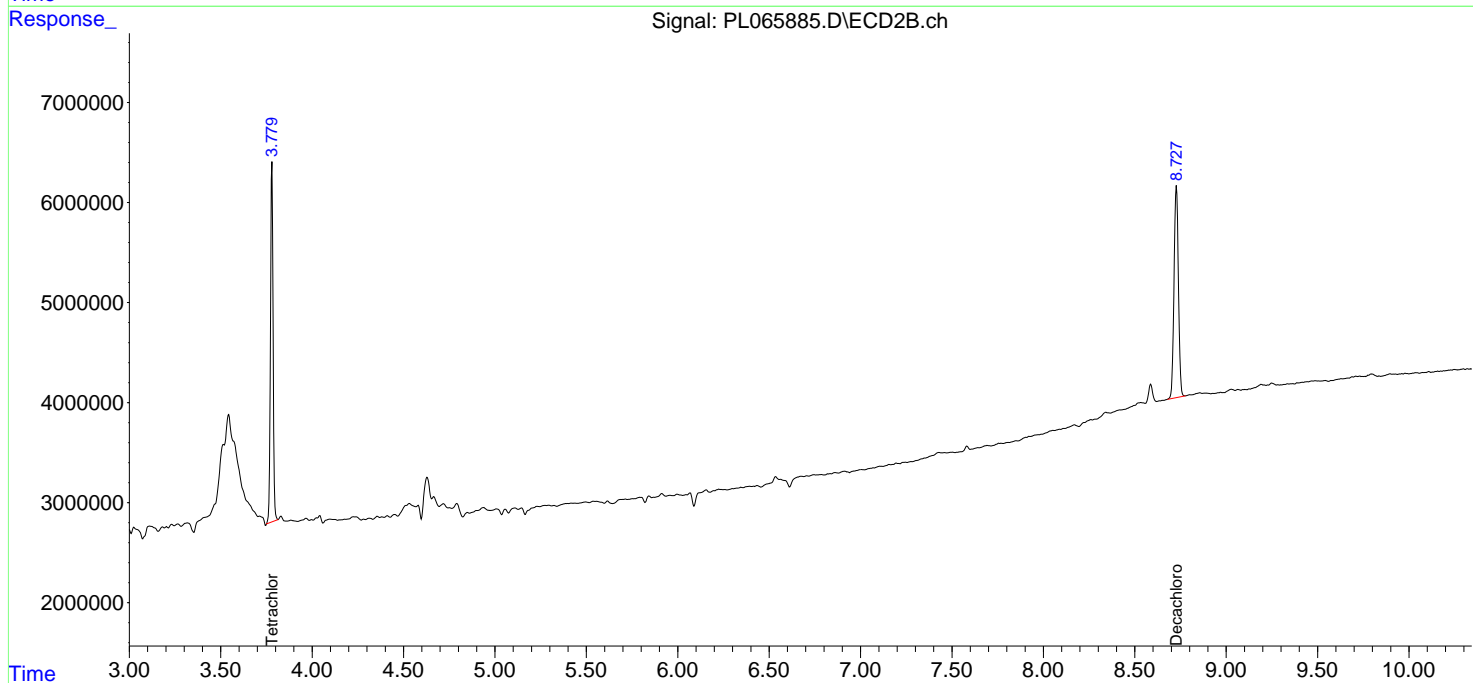
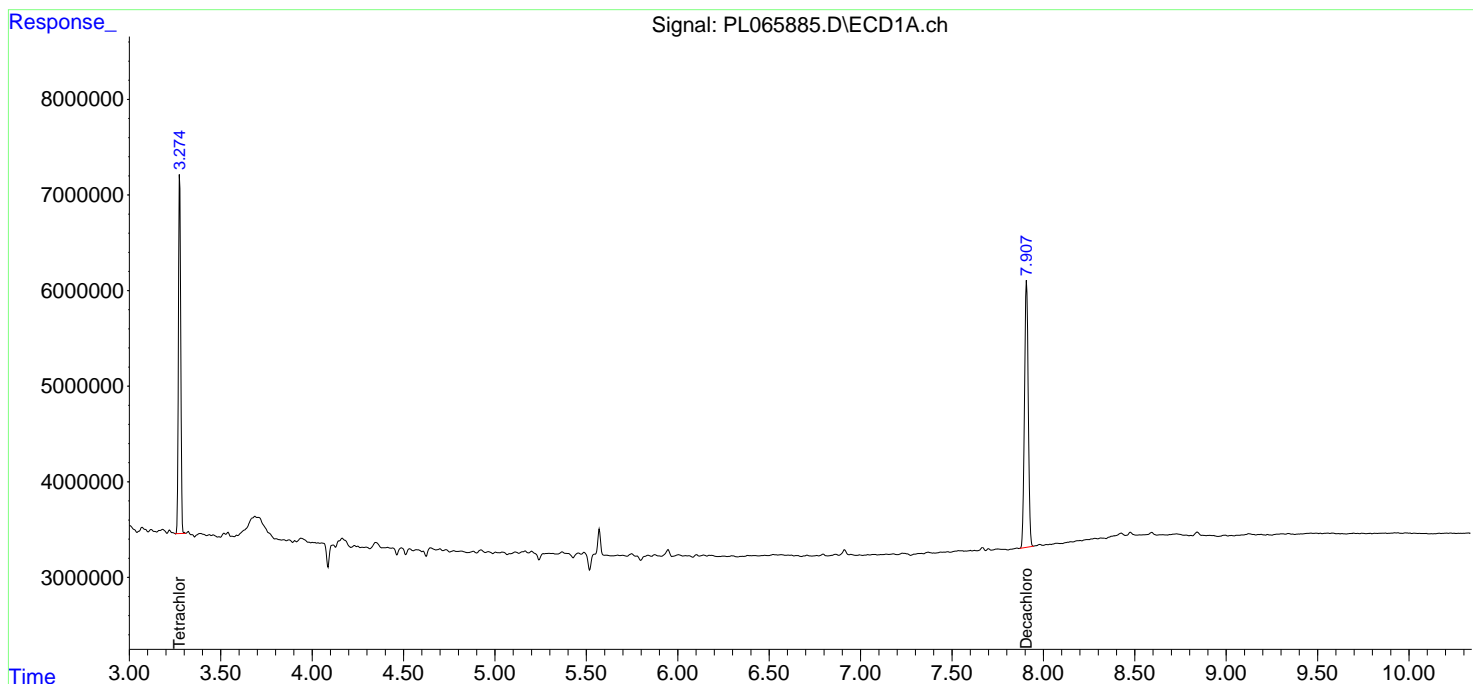
(f)=RT Delta > 1/2 Window (#)=Amounts differ by > 25% (m)=manual int.

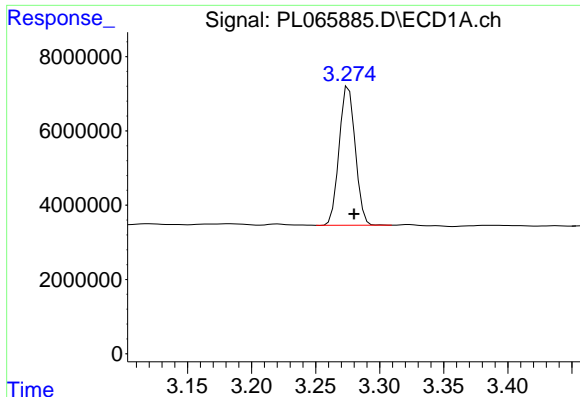
Data Path : Z:\pestpcbsrv\HPCHEM1\ECD_L\Data\PL040521\
 Data File : PL065885.D
 Signal(s) : Signal #1: ECD1A.ch Signal #2: ECD2B.ch
 Acq On : 05 Apr 2021 17:36
 Operator : AR\AJ
 Sample : M1924-01
 Misc :
 ALS Vial : 27 Sample Multiplier: 1

Instrument :
 ECD_L
 ClientSampleId :
 NB-07-040221

Integration File signal 1: autoint1.e
 Integration File signal 2: autoint2.e
 Quant Time: Apr 06 02:35:46 2021
 Quant Method : Z:\pestpcbsrv\HPCHEM1\ECD_L\methods\PL033121.M
 Quant Title : GC Extractables
 QLast Update : Wed Mar 31 15:57:28 2021
 Response via : Initial Calibration
 Integrator: ChemStation

Volume Inj. : 1 µl
 Signal #1 Phase : ZB-MR2 Signal #2 Phase: ZB-MR1
 Signal #1 Info : 30M x 0.32mm x0.2 Signal #2 Info : 30M x 0.32mm x0.5µm

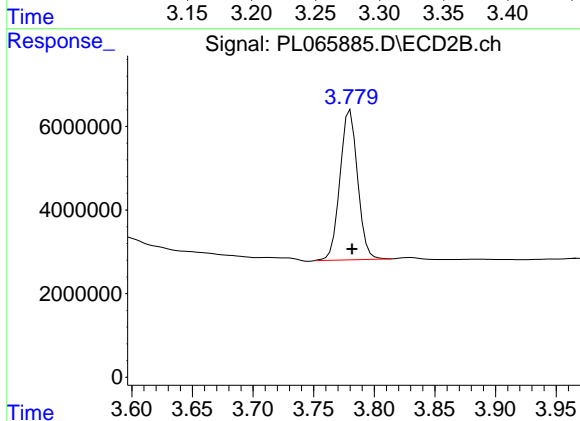




#1 Tetrachloro-m-xylene

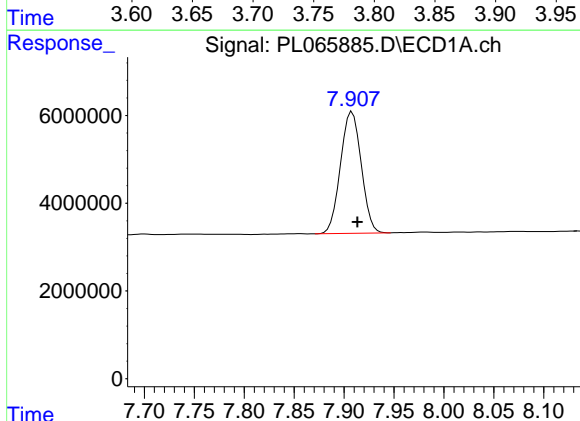
R.T.: 3.276 min
 Delta R.T.: -0.004 min
 Response: 32694373
 Conc: 12.55 ng/ml

Instrument :
 ECD_L
 ClientSampleId :
 NB-07-040221



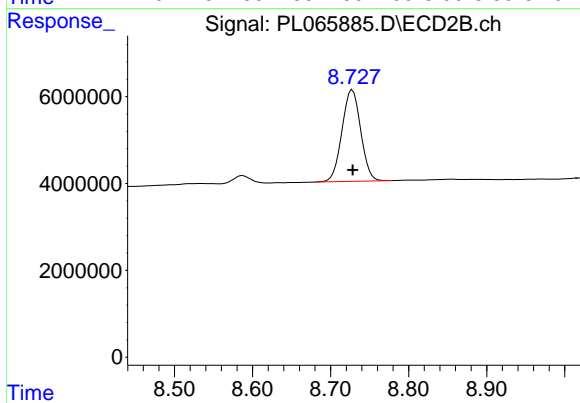
#1 Tetrachloro-m-xylene

R.T.: 3.780 min
 Delta R.T.: -0.001 min
 Response: 36261397
 Conc: 13.21 ng/ml



#28 Decachlorobiphenyl

R.T.: 7.908 min
 Delta R.T.: -0.006 min
 Response: 40168607
 Conc: 17.34 ng/ml



#28 Decachlorobiphenyl

R.T.: 8.728 min
 Delta R.T.: 0.000 min
 Response: 35140936
 Conc: 15.59 ng/ml