

Data Path : Z:\pestpcbsrv\HPCHEM1\ECD\_L\Data\PL040621\  
 Data File : PL065891.D  
 Signal(s) : Signal #1: ECD1A.ch Signal #2: ECD2B.ch  
 Acq On : 06 Apr 2021 09:39  
 Operator : AR\AJ  
 Sample : I.BLK  
 Misc :  
 ALS Vial : 2 Sample Multiplier: 1

Instrument :  
 ECD\_L  
 ClientSampleId :

Integration File signal 1: autoint1.e  
 Integration File signal 2: autoint2.e  
 Quant Time: Apr 07 04:27:55 2021  
 Quant Method : Z:\pestpcbsrv\HPCHEM1\ECD\_L\methods\PL033121.M  
 Quant Title : GC Extractables  
 QLast Update : Wed Mar 31 15:57:28 2021  
 Response via : Initial Calibration  
 Integrator: ChemStation

Volume Inj. : 1 µl  
 Signal #1 Phase : ZB-MR2 Signal #2 Phase: ZB-MR1  
 Signal #1 Info : 30M x 0.32mm x0.2 Signal #2 Info : 30M x 0.32mm x0.5µm

	Compound	RT#1	RT#2	Resp#1	Resp#2	ng/ml	ng/ml
-----							
System Monitoring Compounds							
1)	SA Tetrachlo...	3.276	3.780	47476186	49246588	18.225	17.941
28)	SA Decachlor...	7.907	8.727	50001922	43052567	21.589	19.096
Target Compounds							
4)	MA Heptachlor	0.000	4.944	0	1766221	N.D.	0.500 #
6)	B beta-BHC	4.227	4.628	-188325	10723103	N.D.	6.156
8)	B Heptachlo...	0.000	5.604	0	7309531	N.D.	2.354 #
9)	A Endosulfan I	0.000	5.961	0	20405	N.D.	0.007 #
11)	B alpha-Chl...	0.000	5.917	0	341853	N.D.	0.116 #
14)	MA Endrin	5.749	0.000	719327	0	0.266	N.D. #
15)	B Endosulfa...	0.000	6.672f	0	470580	N.D.	0.199 #
17)	MA 4,4'-DDT	6.122	0.000	444141	0	0.211	N.D. #
18)	B Endrin al...	6.195	6.751f	460528	357337	0.243	0.188
19)	B Endosulfa...	0.000	7.011	0	189215	N.D.	0.078 #
21)	B Endrin ke...	6.854f	7.440f	646466	523326	0.236	0.204
26)	Chlordane-4	0.000	5.917	0	341853	N.D.	0.676 #

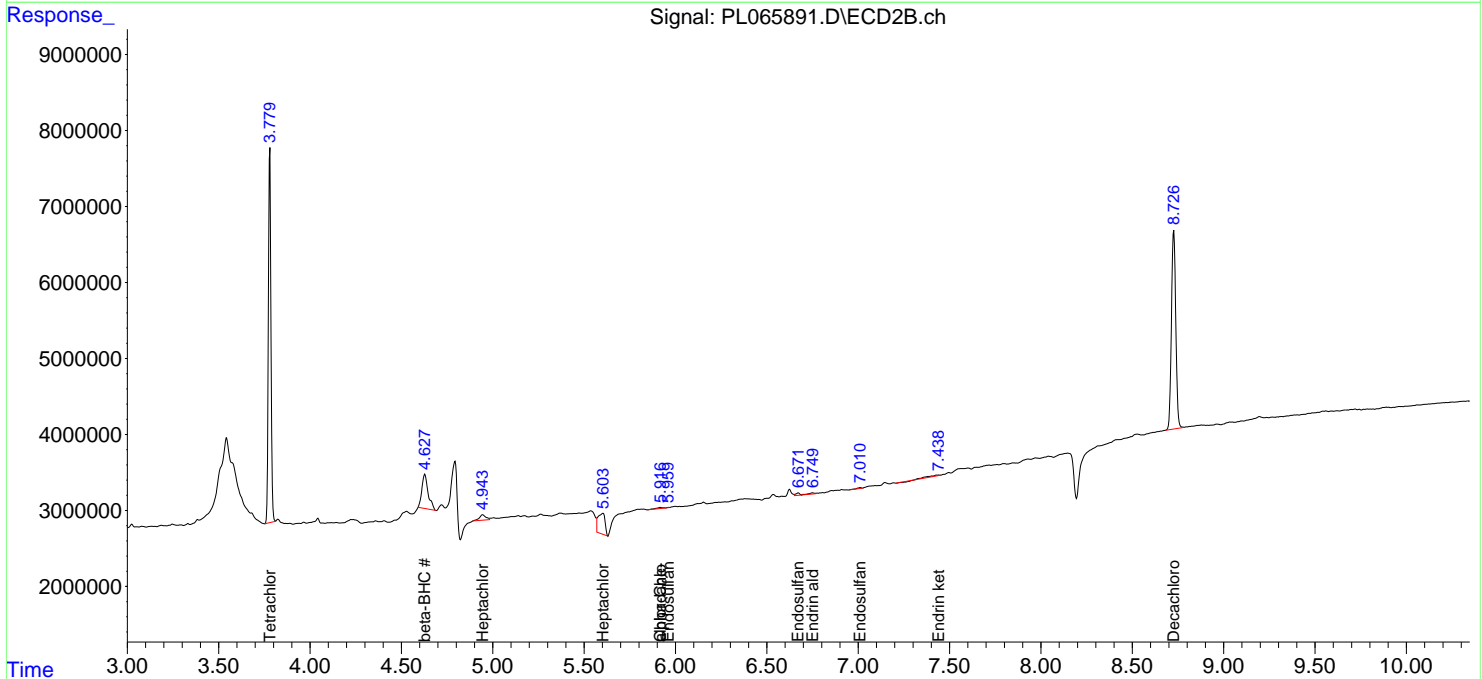
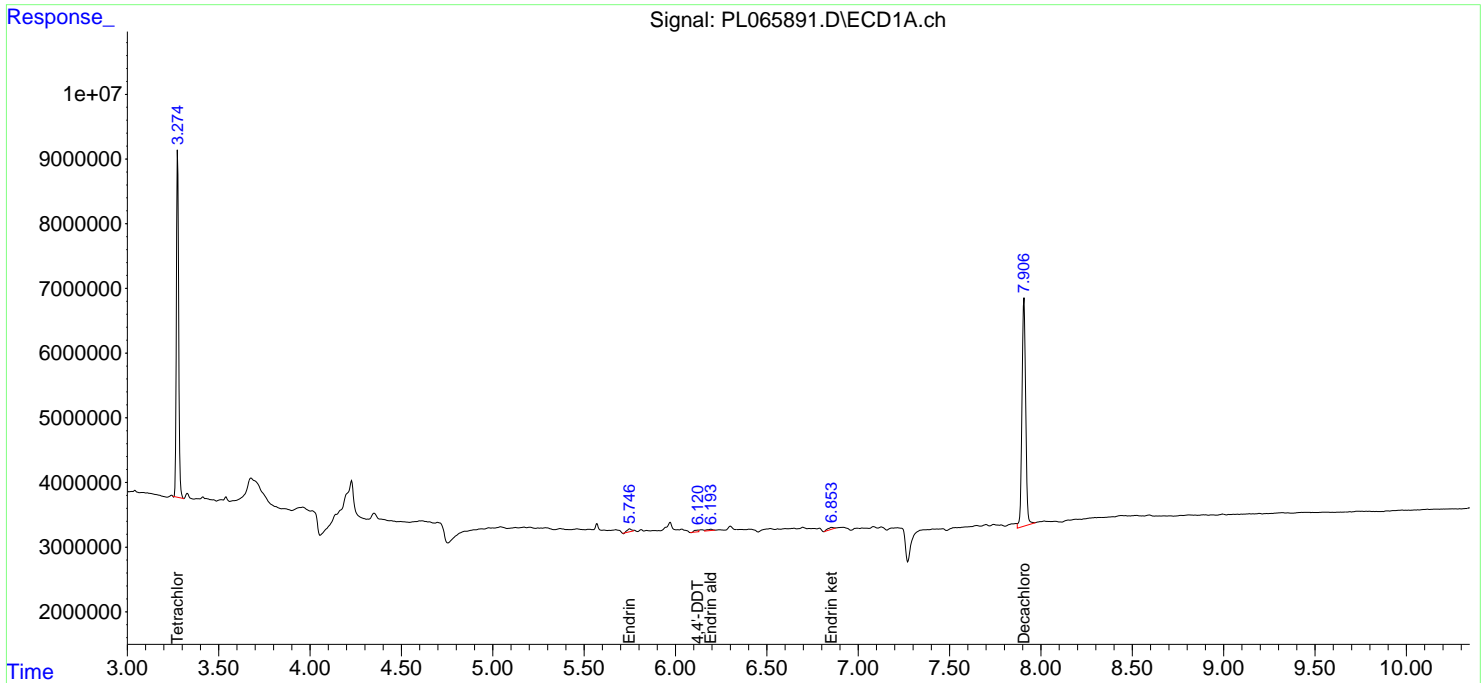
(f)=RT Delta > 1/2 Window (#)=Amounts differ by > 25% (m)=manual int.

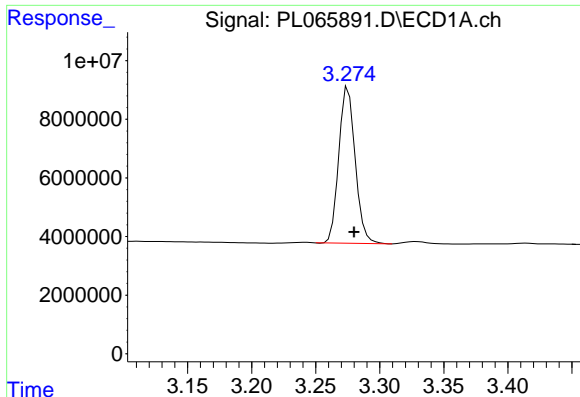
Data Path : Z:\pestpcbsrv\HPCHEM1\ECD\_L\Data\PL040621\  
 Data File : PL065891.D  
 Signal(s) : Signal #1: ECD1A.ch Signal #2: ECD2B.ch  
 Acq On : 06 Apr 2021 09:39  
 Operator : AR\AJ  
 Sample : I.BLK  
 Misc :  
 ALS Vial : 2 Sample Multiplier: 1

Instrument :  
 ECD\_L  
 ClientSampled :

Integration File signal 1: autoint1.e  
 Integration File signal 2: autoint2.e  
 Quant Time: Apr 07 04:27:55 2021  
 Quant Method : Z:\pestpcbsrv\HPCHEM1\ECD\_L\methods\PL033121.M  
 Quant Title : GC Extractables  
 QLast Update : Wed Mar 31 15:57:28 2021  
 Response via : Initial Calibration  
 Integrator: ChemStation

Volume Inj. : 1 µl  
 Signal #1 Phase : ZB-MR2 Signal #2 Phase: ZB-MR1  
 Signal #1 Info : 30M x 0.32mm x0.2 Signal #2 Info : 30M x 0.32mm x0.5µm

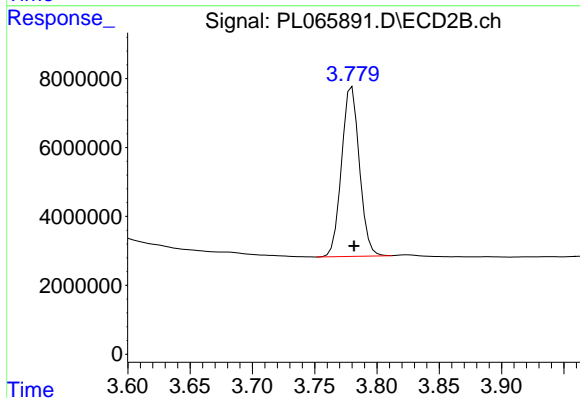




#1 Tetrachloro-m-xylene

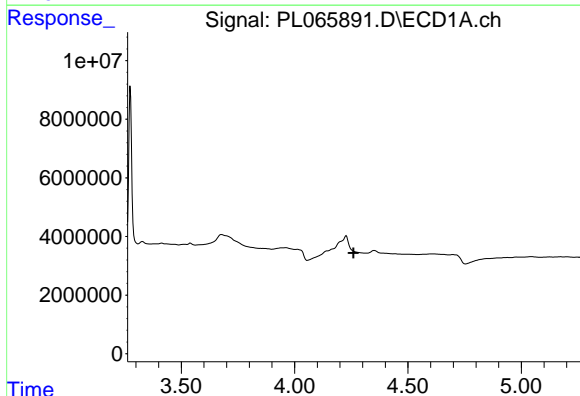
R.T.: 3.276 min  
 Delta R.T.: -0.004 min  
 Response: 47476186  
 Conc: 18.22 ng/ml

Instrument :  
 ECD\_L  
 ClientSampled :



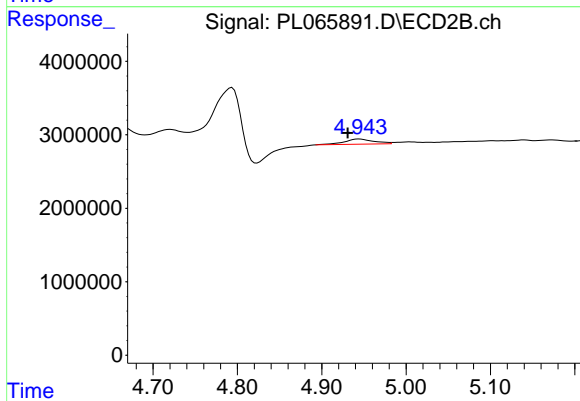
#1 Tetrachloro-m-xylene

R.T.: 3.780 min  
 Delta R.T.: -0.002 min  
 Response: 49246588  
 Conc: 17.94 ng/ml



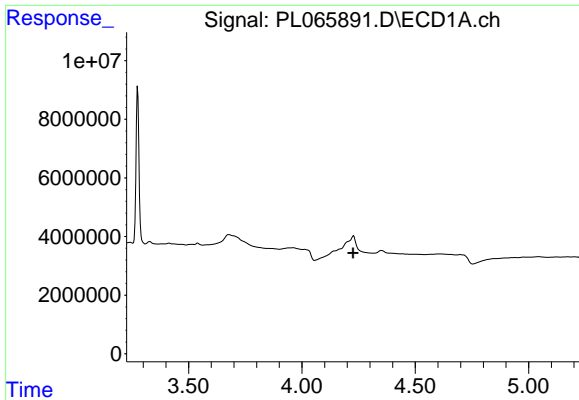
#4 Heptachlor

R.T.: 0.000 min  
 Exp R.T. : 4.260 min  
 Response: 0  
 Conc: N.D.



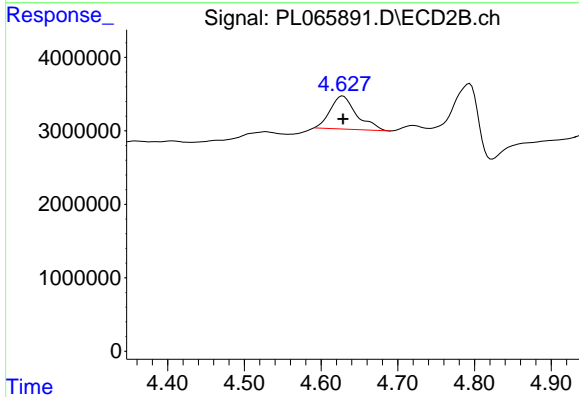
#4 Heptachlor

R.T.: 4.944 min  
 Delta R.T.: 0.013 min  
 Response: 1766221  
 Conc: 0.50 ng/ml

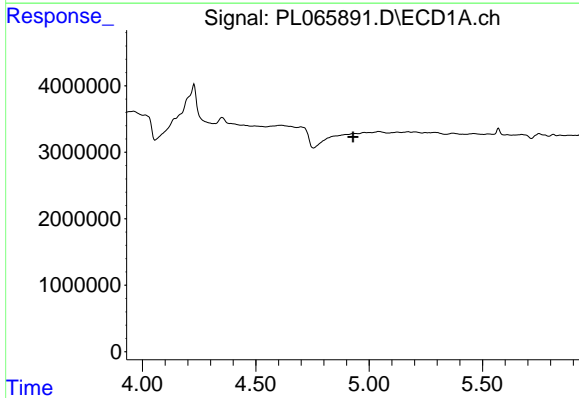


#6 beta-BHC  
 R.T.: 4.227 min  
 Delta R.T.: 0.000 min  
 Response: -188325  
 Conc: N.D.

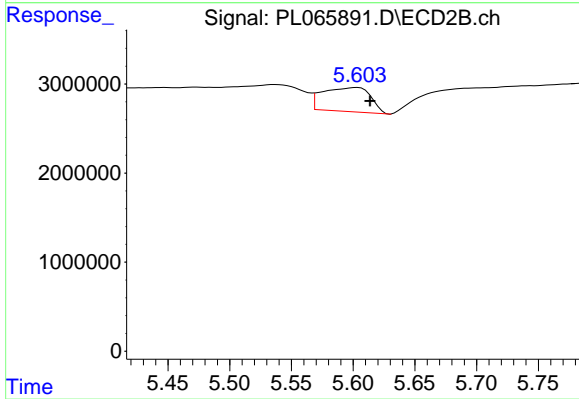
Instrument :  
 ECD\_L  
 ClientSampled :



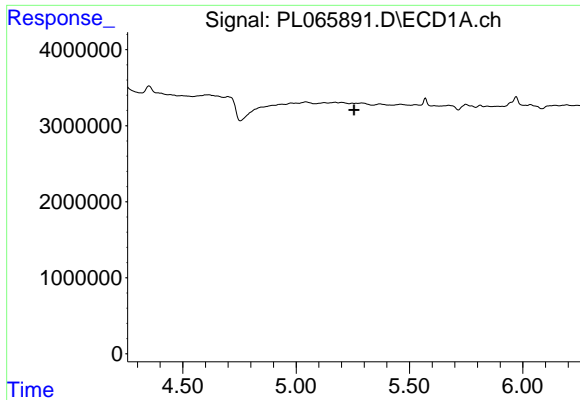
#6 beta-BHC  
 R.T.: 4.628 min  
 Delta R.T.: 0.000 min  
 Response: 10723103  
 Conc: 6.16 ng/ml



#8 Heptachlor epoxide  
 R.T.: 0.000 min  
 Exp R.T. : 4.929 min  
 Response: 0  
 Conc: N.D.

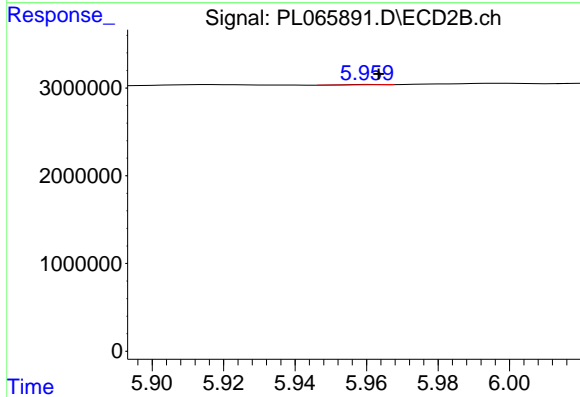


#8 Heptachlor epoxide  
 R.T.: 5.604 min  
 Delta R.T.: -0.010 min  
 Response: 7309531  
 Conc: 2.35 ng/ml

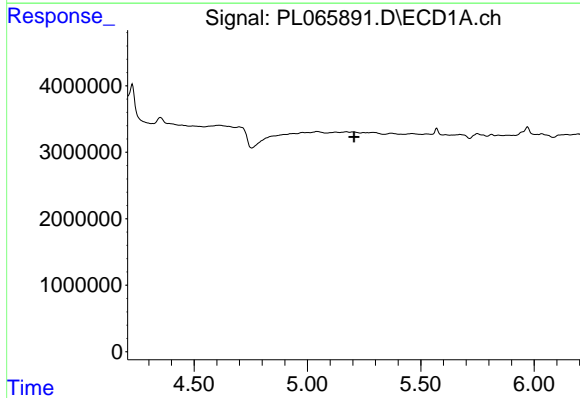


#9 Endosulfan I  
 R.T.: 0.000 min  
 Exp R.T. : 5.255 min  
 Response: 0  
 Conc: N.D.

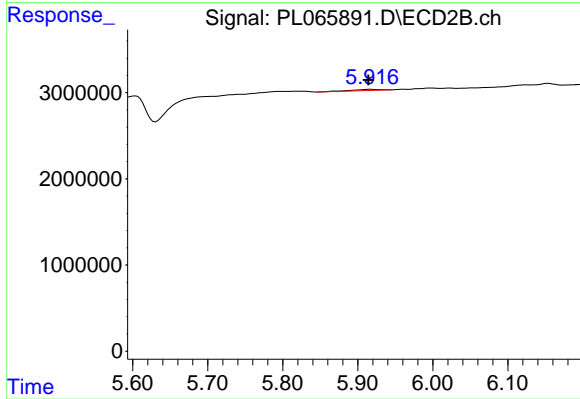
Instrument :  
 ECD\_L  
 ClientSampled :



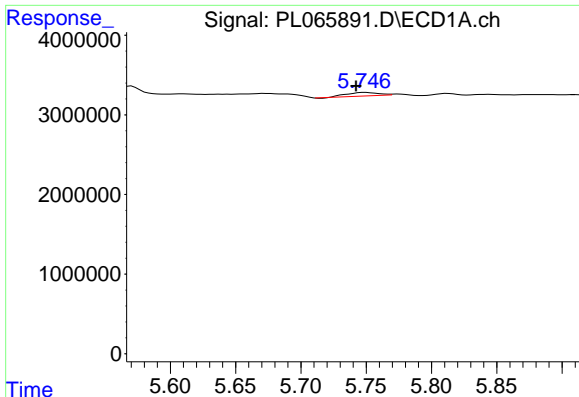
#9 Endosulfan I  
 R.T.: 5.961 min  
 Delta R.T.: -0.003 min  
 Response: 20405  
 Conc: 0.01 ng/ml



#11 alpha-Chlordane  
 R.T.: 0.000 min  
 Exp R.T. : 5.206 min  
 Response: 0  
 Conc: N.D.

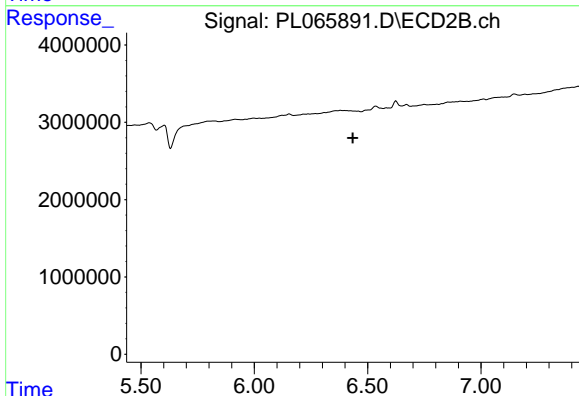


#11 alpha-Chlordane  
 R.T.: 5.917 min  
 Delta R.T.: 0.003 min  
 Response: 341853  
 Conc: 0.12 ng/ml

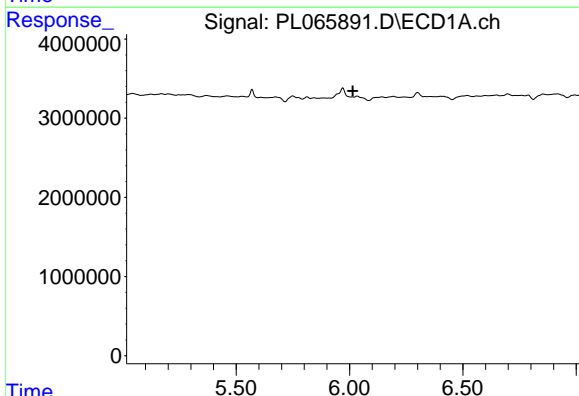


#14 Endrin  
 R.T.: 5.749 min  
 Delta R.T.: 0.007 min  
 Response: 719327  
 Conc: 0.27 ng/ml

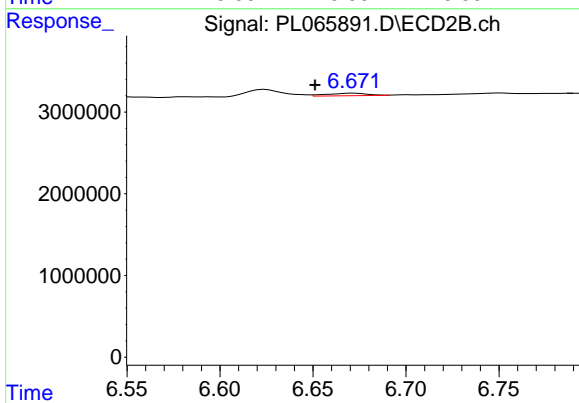
Instrument :  
 ECD\_L  
 ClientSampleId :



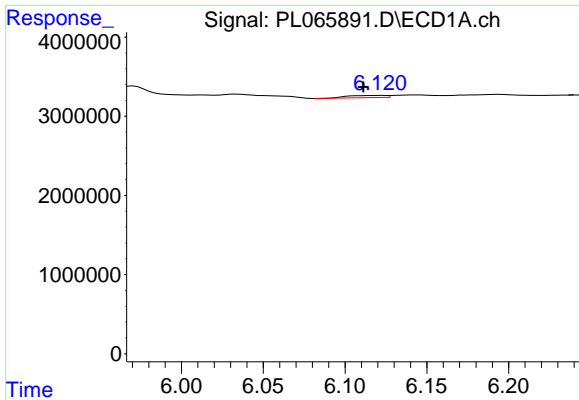
#14 Endrin  
 R.T.: 0.000 min  
 Exp R.T. : 6.434 min  
 Response: 0  
 Conc: N.D.



#15 Endosulfan II  
 R.T.: 0.000 min  
 Exp R.T. : 6.015 min  
 Response: 0  
 Conc: N.D.

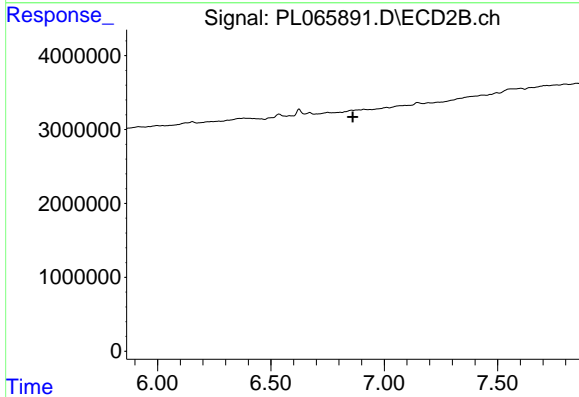


#15 Endosulfan II  
 R.T.: 6.672 min  
 Delta R.T.: 0.021 min  
 Response: 470580  
 Conc: 0.20 ng/ml

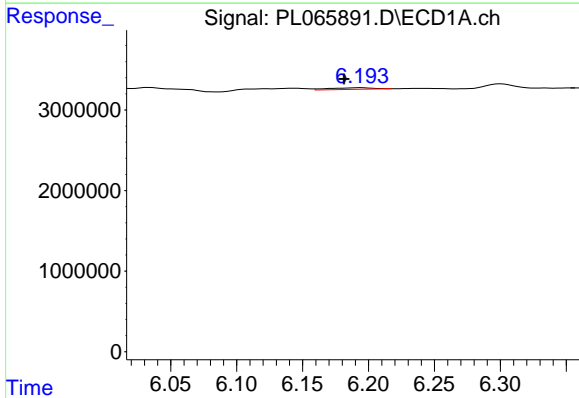


#17 4,4'-DDT  
 R.T.: 6.122 min  
 Delta R.T.: 0.011 min  
 Response: 444141  
 Conc: 0.21 ng/ml

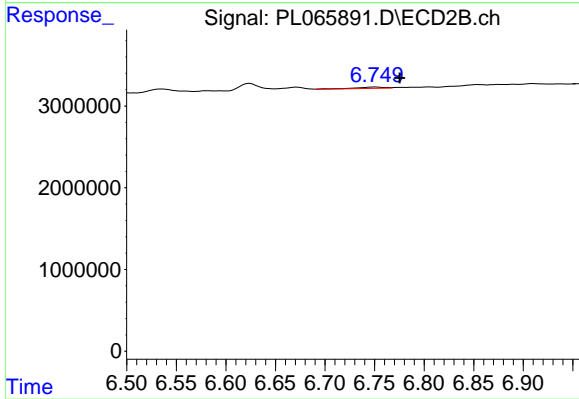
Instrument :  
 ECD\_L  
 ClientSampled :



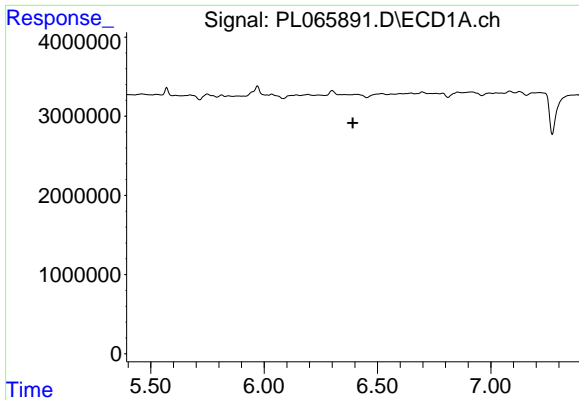
#17 4,4'-DDT  
 R.T.: 0.000 min  
 Exp R.T. : 6.861 min  
 Response: 0  
 Conc: N.D.



#18 Endrin aldehyde  
 R.T.: 6.195 min  
 Delta R.T.: 0.013 min  
 Response: 460528  
 Conc: 0.24 ng/ml

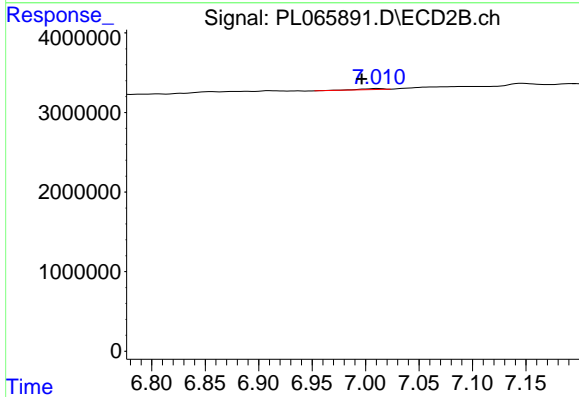


#18 Endrin aldehyde  
 R.T.: 6.751 min  
 Delta R.T.: -0.025 min  
 Response: 357337  
 Conc: 0.19 ng/ml

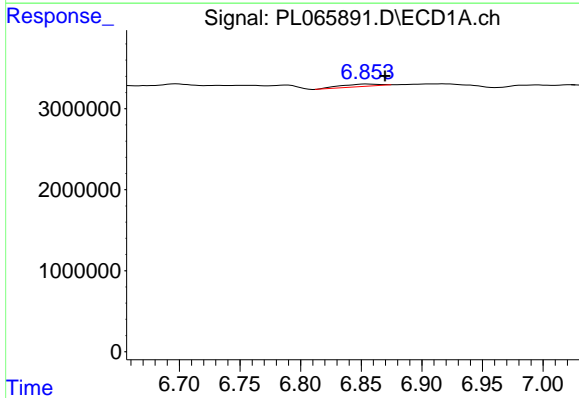


#19 Endosulfan Sulfate  
 R.T.: 0.000 min  
 Exp R.T.: 6.391 min  
 Response: 0  
 Conc: N.D.

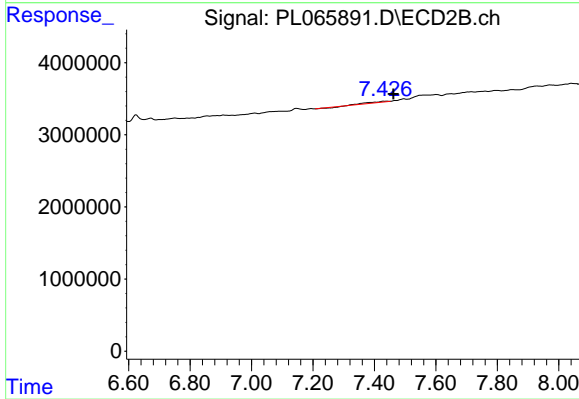
Instrument :  
 ECD\_L  
 ClientSampled :



#19 Endosulfan Sulfate  
 R.T.: 7.011 min  
 Delta R.T.: 0.015 min  
 Response: 189215  
 Conc: 0.08 ng/ml

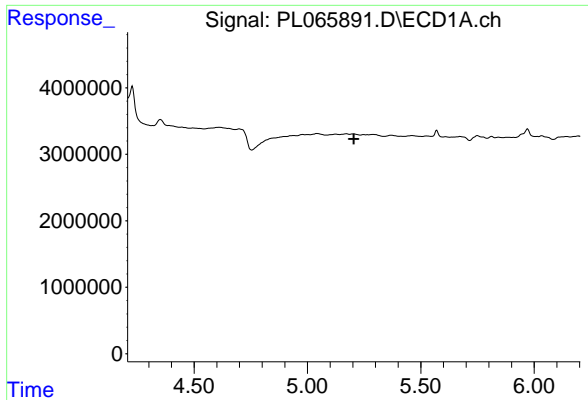


#21 Endrin ketone  
 R.T.: 6.854 min  
 Delta R.T.: -0.015 min  
 Response: 646466  
 Conc: 0.24 ng/ml



#21 Endrin ketone  
 R.T.: 7.440 min  
 Delta R.T.: -0.023 min  
 Response: 523326  
 Conc: 0.20 ng/ml

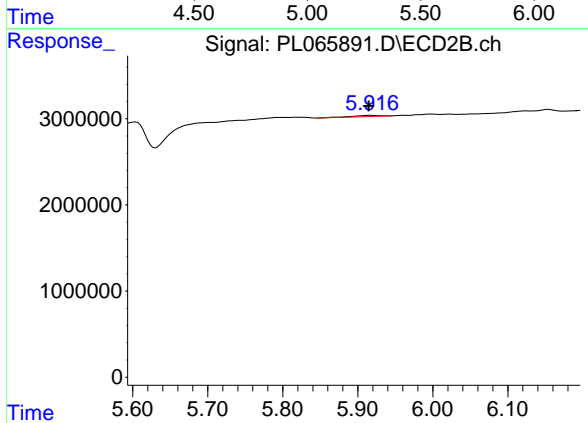




#26 Chlordane-4

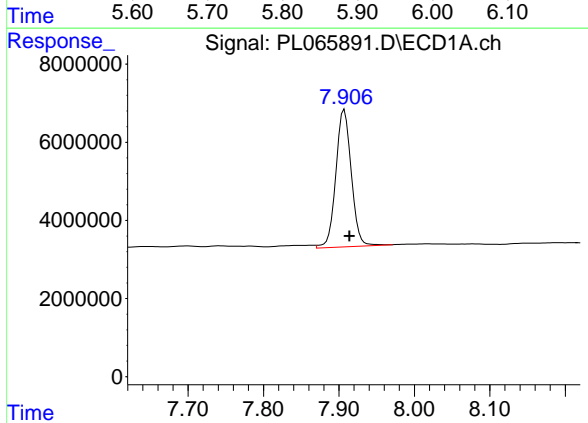
R.T.: 0.000 min  
 Exp R.T.: 5.205 min  
 Response: 0  
 Conc: N.D.

Instrument :  
 ECD\_L  
 ClientSampleId :



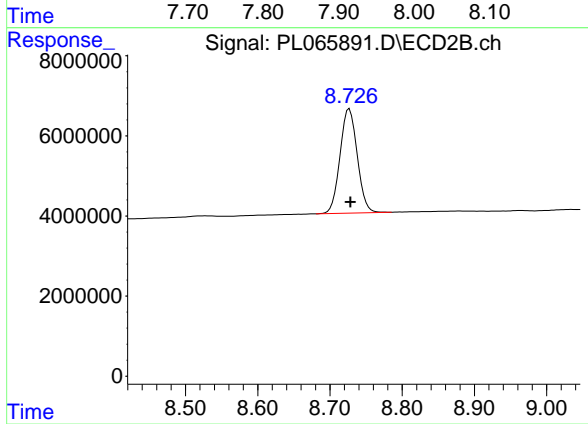
#26 Chlordane-4

R.T.: 5.917 min  
 Delta R.T.: 0.003 min  
 Response: 341853  
 Conc: 0.68 ng/ml



#28 Decachlorobiphenyl

R.T.: 7.907 min  
 Delta R.T.: -0.006 min  
 Response: 50001922  
 Conc: 21.59 ng/ml



#28 Decachlorobiphenyl

R.T.: 8.727 min  
 Delta R.T.: -0.001 min  
 Response: 43052567  
 Conc: 19.10 ng/ml