

Data Path : Z:\pestpcbsrv\HPCHEM1\ECD_L\Data\PL040621\
 Data File : PL065897.D
 Signal(s) : Signal #1: ECD1A.ch Signal #2: ECD2B.ch
 Acq On : 06 Apr 2021 11:36
 Operator : AR\AJ
 Sample : PB135533BS
 Misc :
 ALS Vial : 8 Sample Multiplier: 1

Instrument :
 ECD_L
Client Sampled :
 PB135533BS

Manual Integrations
APPROVED
 Ankita
 4/7/2021 4:50:11 PM

Integration File signal 1: autoint1.e
 Integration File signal 2: autoint2.e
 Quant Time: Apr 07 04:29:31 2021
 Quant Method : Z:\pestpcbsrv\HPCHEM1\ECD_L\methods\PL033121.M
 Quant Title : GC Extractables
 QLast Update : Wed Mar 31 15:57:28 2021
 Response via : Initial Calibration
 Integrator: ChemStation

Volume Inj. : 1 µl
 Signal #1 Phase : ZB-MR2 Signal #2 Phase: ZB-MR1
 Signal #1 Info : 30M x 0.32mm x0.2 Signal #2 Info : 30M x 0.32mm x0.5µm

Compound	RT#1	RT#2	Resp#1	Resp#2	ng/ml	ng/ml

System Monitoring Compounds						
1) SA Tetrachlo...	3.276	3.780	48637359	52321724	18.671	19.061
2) SA Decachlor...	7.909	8.727	51921848	47260423	22.418	20.962
Target Compounds						
2) A alpha-BHC	3.699	4.165	198.8E6	191.3E6	48.604	47.077
3) MA gamma-BHC...	3.971	4.444	179.6E6	175.6E6	48.521m	47.968
4) MA Heptachlor	4.257	4.929	163.8E6	162.7E6	45.458	46.095
5) MB Aldrin	4.492	5.226	164.0E6	156.6E6	48.032m	47.443
6) B beta-BHC	4.223	4.628	77332735	88727784	48.518	50.940
7) B delta-BHC	4.416	4.835	170.9E6	154.0E6	47.514	51.632
8) B Heptachlo...	4.925	5.612	154.6E6	146.8E6	49.152	47.270
9) A Endosulfan I	5.252	5.962	142.6E6	135.4E6	49.493	49.307
10) B gamma-Chl...	5.145	5.843	154.5E6	146.7E6	49.085	48.910
11) B alpha-Chl...	5.201	5.912	150.6E6	143.7E6	48.416	48.562
12) B 4,4'-DDE	5.368	6.077	138.2E6	130.2E6	50.086	49.821
13) MA Dieldrin	5.489	6.218	150.3E6	138.9E6	51.445	49.301
14) MA Endrin	5.738	6.434	133.3E6	122.5E6	49.363	49.196
15) B Endosulfa...	6.011	6.650	128.9E6	121.7E6	51.893	51.505
16) A 4,4'-DDD	5.874	6.568	112.9E6	104.2E6	49.737	49.438
17) MA 4,4'-DDT	6.106	6.860	99103038	93258552	47.039m	41.650
18) B Endrin al...	6.177	6.774	105.6E6	102.8E6	55.794	54.154
19) B Endosulfa...	6.387	6.995	131.7E6	121.7E6	51.035	50.156
20) A Methoxychlor	6.651	7.325	57832146	54473511	46.068	43.010
21) B Endrin ke...	6.864	7.462	138.7E6	128.3E6	50.594	49.924
22) Mirex	7.036	7.897	109.2E6	98822133	52.145	50.631

(f)=RT Delta > 1/2 Window (#)=Amounts differ by > 25% (m)=manual int.

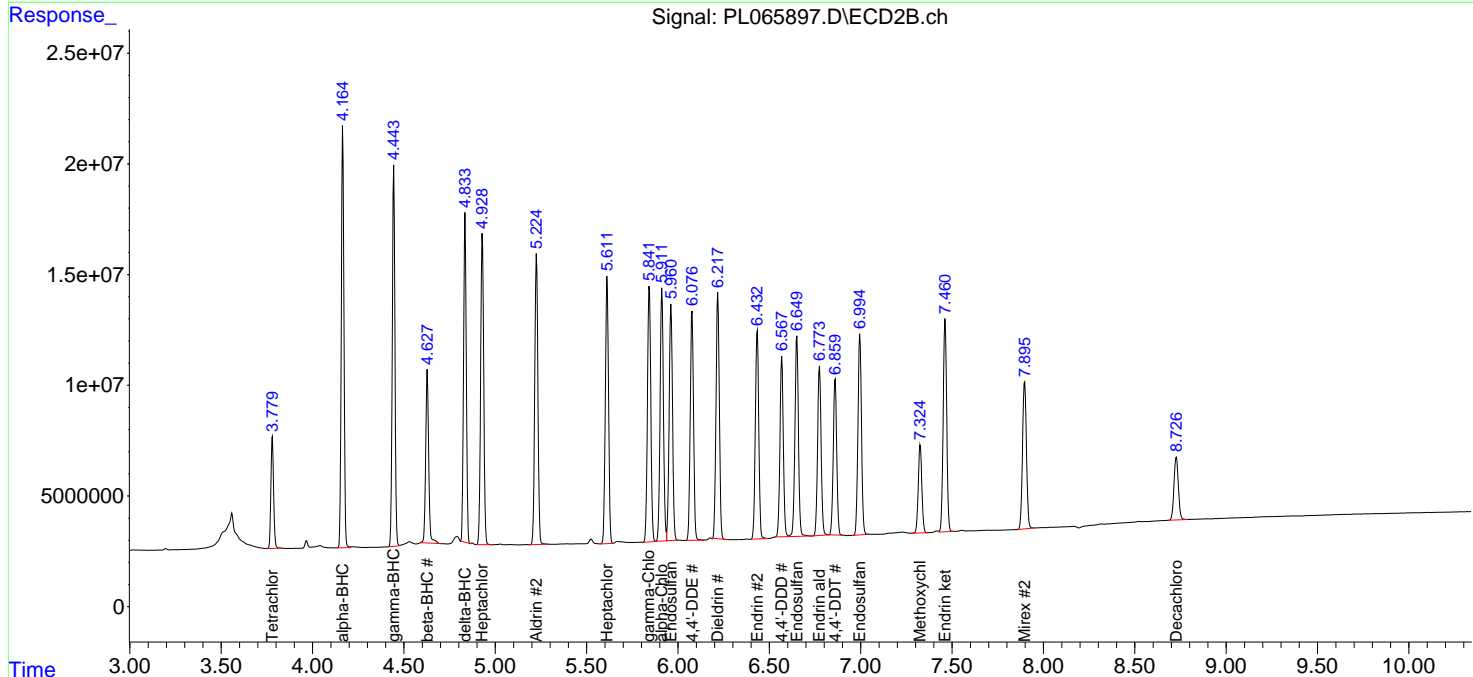
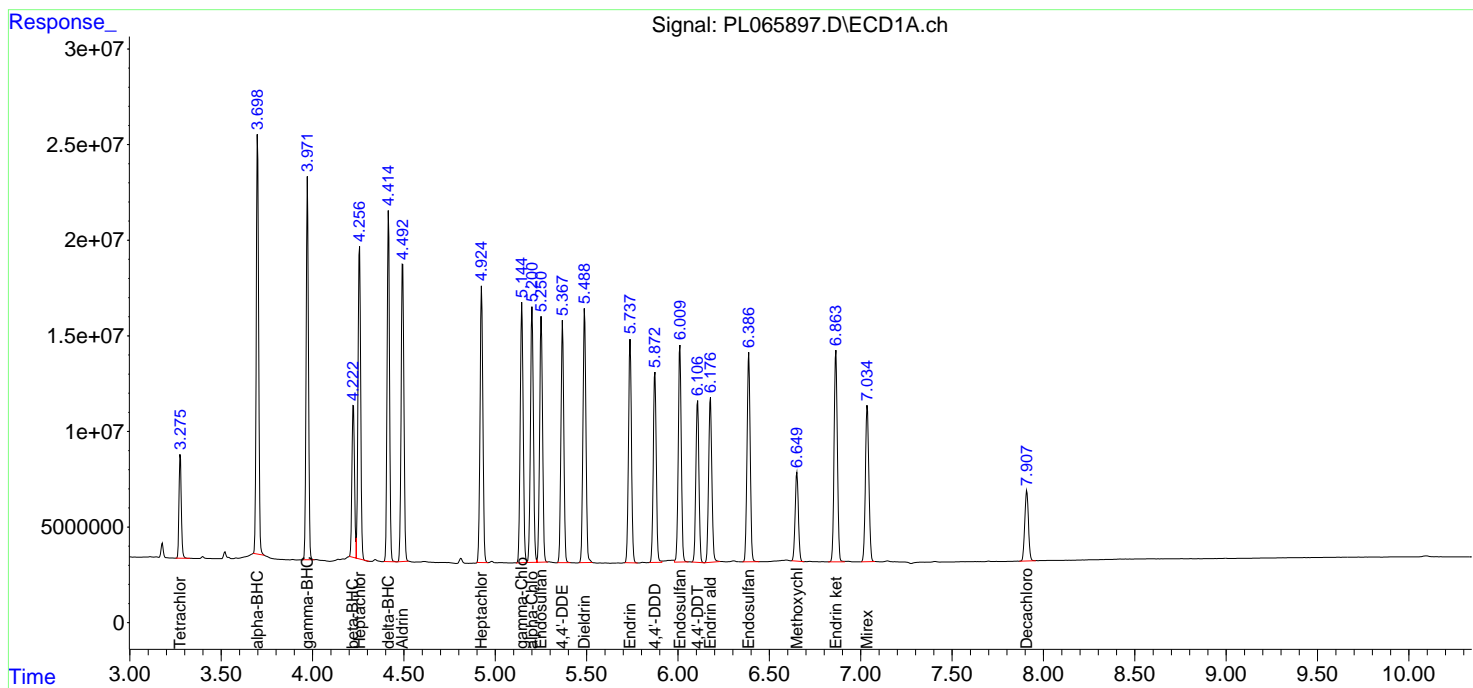
Data Path : Z:\pestpcbsrv\HPCHEM1\ECD_L\Data\PL040621\
 Data File : PL065897.D
 Signal(s) : Signal #1: ECD1A.ch Signal #2: ECD2B.ch
 Acq On : 06 Apr 2021 11:36
 Operator : AR\AJ
 Sample : PB135533BS
 Misc :
 ALS Vial : 8 Sample Multiplier: 1

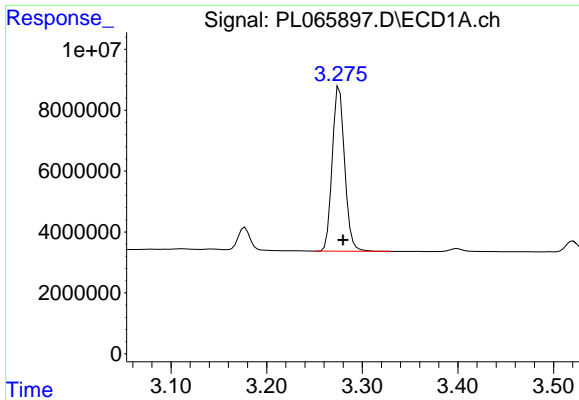
Instrument :
 ECD_L
 ClientSampled :
 PB135533BS

Manual Integrations
APPROVED
 Ankita
 4/7/2021 4:50:11 PM

Integration File signal 1: autoint1.e
 Integration File signal 2: autoint2.e
 Quant Time: Apr 07 04:29:31 2021
 Quant Method : Z:\pestpcbsrv\HPCHEM1\ECD_L\methods\PL033121.M
 Quant Title : GC Extractables
 QLast Update : Wed Mar 31 15:57:28 2021
 Response via : Initial Calibration
 Integrator: ChemStation

Volume Inj. : 1 µl
 Signal #1 Phase : ZB-MR2 Signal #2 Phase: ZB-MR1
 Signal #1 Info : 30M x 0.32mm x0.2 Signal #2 Info : 30M x 0.32mm x0.5µm

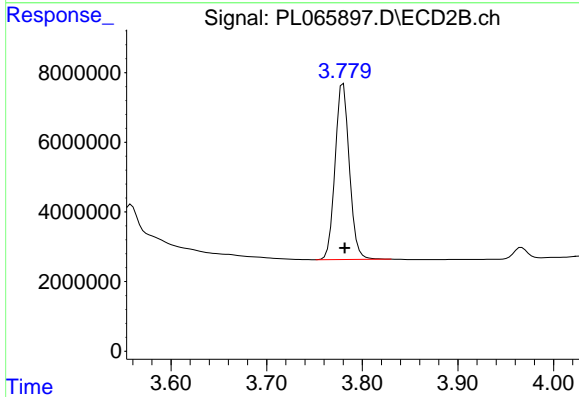




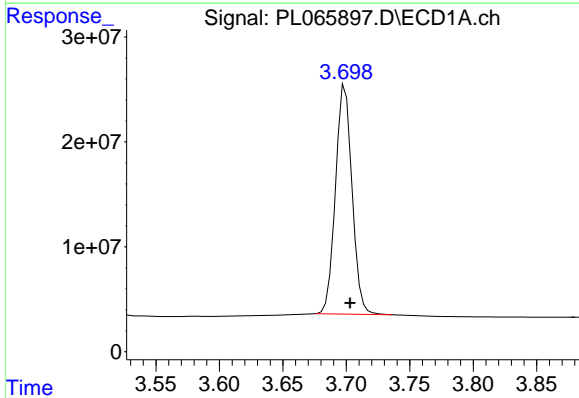
#1 Tetrachloro-m-xylene
 R.T.: 3.276 min
 Delta R.T.: -0.004 min
 Response: 48637359
 Conc: 18.67 ng/ml

Instrument :
 ECD_L
 ClientSampleId :
 PB135533BS

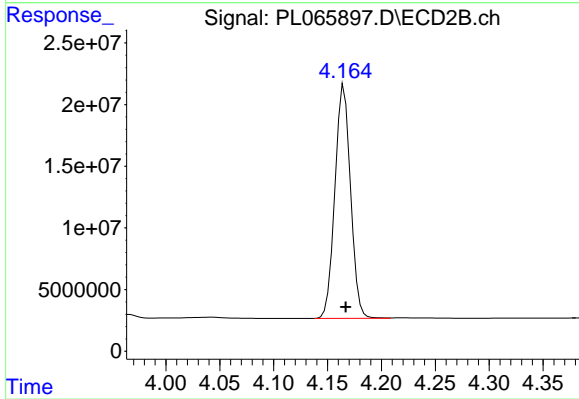
Manual Integrations
 APPROVED
 Ankita
 4/7/2021 4:50:11 PM



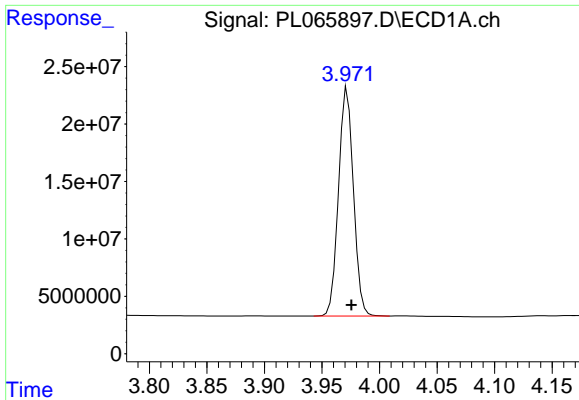
#1 Tetrachloro-m-xylene
 R.T.: 3.780 min
 Delta R.T.: -0.001 min
 Response: 52321724
 Conc: 19.06 ng/ml



#2 alpha-BHC
 R.T.: 3.699 min
 Delta R.T.: -0.004 min
 Response: 198782382
 Conc: 48.60 ng/ml



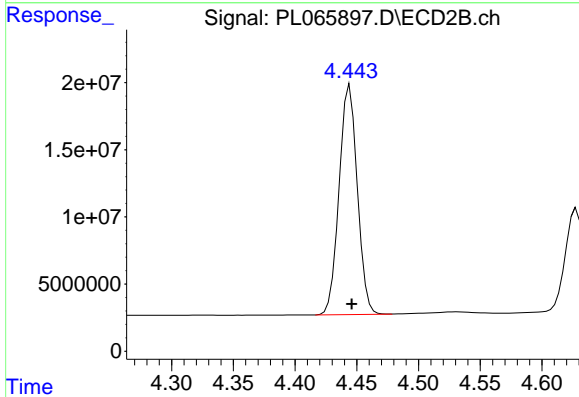
#2 alpha-BHC
 R.T.: 4.165 min
 Delta R.T.: -0.002 min
 Response: 191274275
 Conc: 47.08 ng/ml



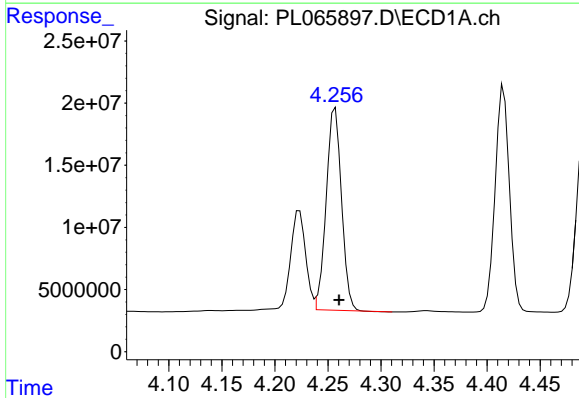
#3 gamma-BHC (Lindane)
 R.T.: 3.971 min
 Delta R.T.: -0.005 min
 Response: 179610627
 Conc: 48.52 ng/ml m

Instrument :
 ECD_L
ClientSampleId :
 PB135533BS

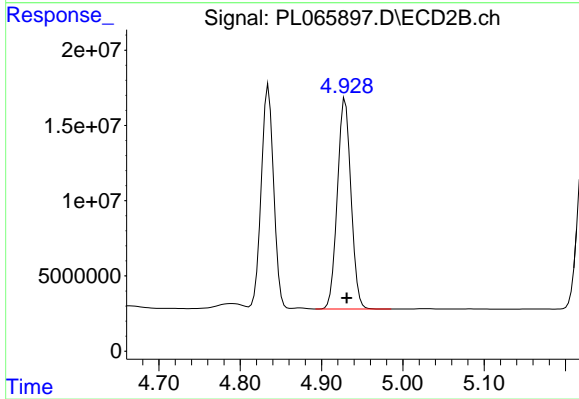
Manual Integrations
APPROVED
 Ankita
 4/7/2021 4:50:11 PM



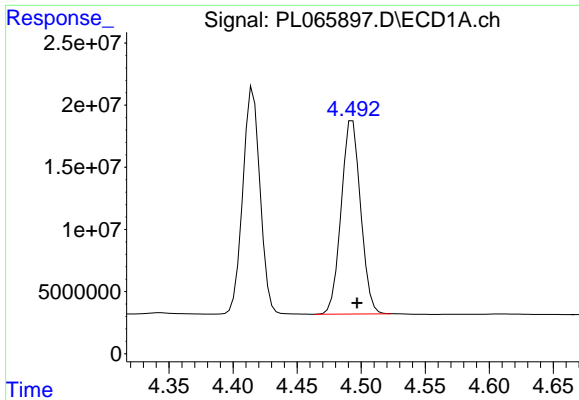
#3 gamma-BHC (Lindane)
 R.T.: 4.444 min
 Delta R.T.: -0.002 min
 Response: 175620193
 Conc: 47.97 ng/ml



#4 Heptachlor
 R.T.: 4.257 min
 Delta R.T.: -0.003 min
 Response: 163757030
 Conc: 45.46 ng/ml



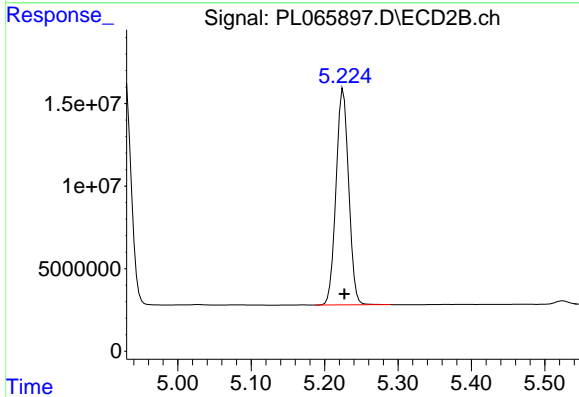
#4 Heptachlor
 R.T.: 4.929 min
 Delta R.T.: -0.002 min
 Response: 162680303
 Conc: 46.09 ng/ml



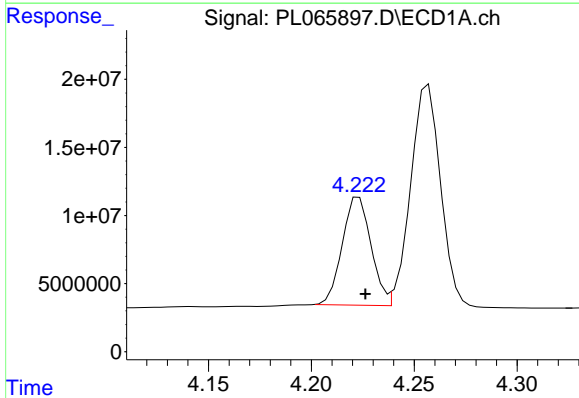
#5 Aldrin
 R.T.: 4.492 min
 Delta R.T.: -0.005 min
 Response: 163990644
 Conc: 48.03 ng/ml m

Instrument :
 ECD_L
ClientSampled :
 PB135533BS

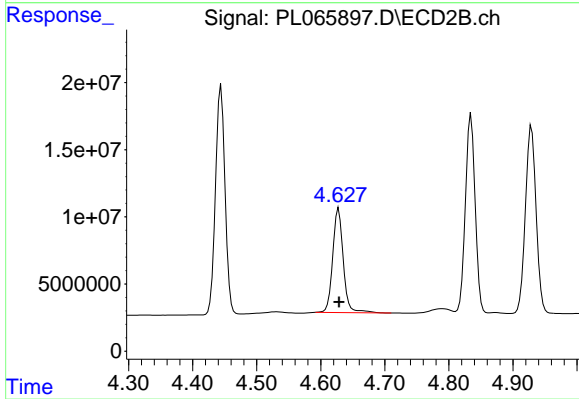
Manual Integrations
APPROVED
 Ankita
 4/7/2021 4:50:11 PM



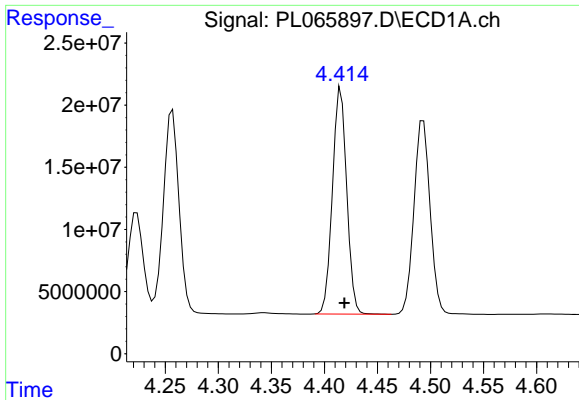
#5 Aldrin
 R.T.: 5.226 min
 Delta R.T.: -0.001 min
 Response: 156643705
 Conc: 47.44 ng/ml



#6 beta-BHC
 R.T.: 4.223 min
 Delta R.T.: -0.003 min
 Response: 77332735
 Conc: 48.52 ng/ml



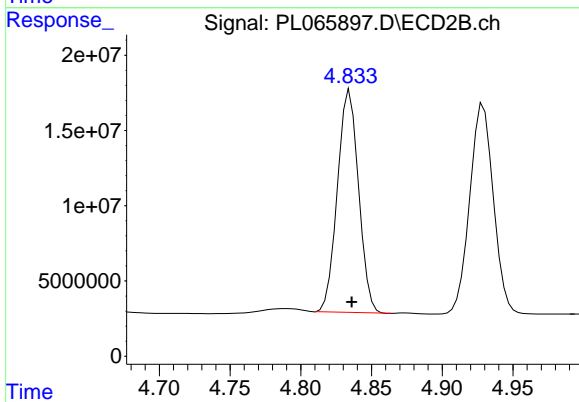
#6 beta-BHC
 R.T.: 4.628 min
 Delta R.T.: 0.000 min
 Response: 88727784
 Conc: 50.94 ng/ml



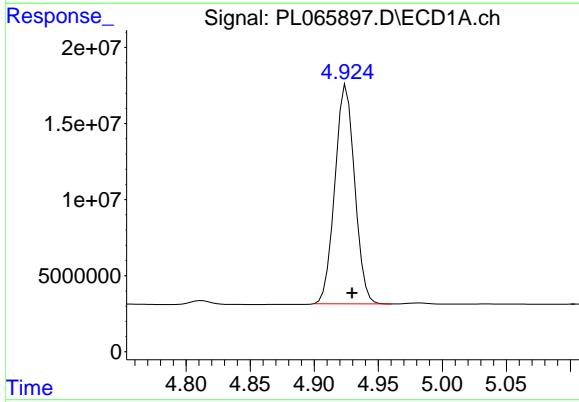
#7 delta-BHC
 R.T.: 4.416 min
 Delta R.T.: -0.003 min
 Response: 170922012
 Conc: 47.51 ng/ml

Instrument :
 ECD_L
ClientSampled :
 PB135533BS

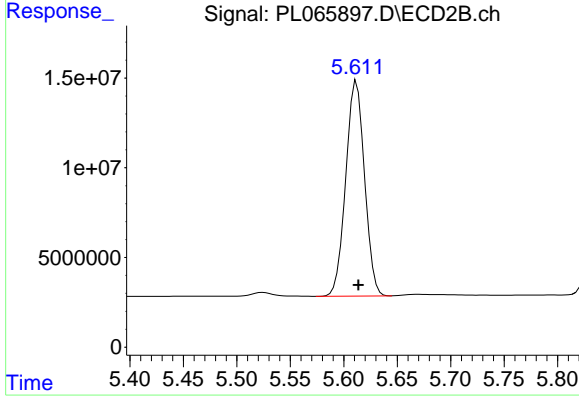
Manual Integrations
APPROVED
 Ankita
 4/7/2021 4:50:11 PM



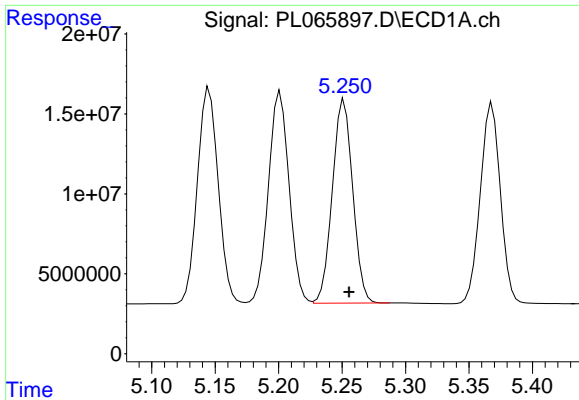
#7 delta-BHC
 R.T.: 4.835 min
 Delta R.T.: -0.001 min
 Response: 153995288
 Conc: 51.63 ng/ml



#8 Heptachlor epoxide
 R.T.: 4.925 min
 Delta R.T.: -0.004 min
 Response: 154558018
 Conc: 49.15 ng/ml



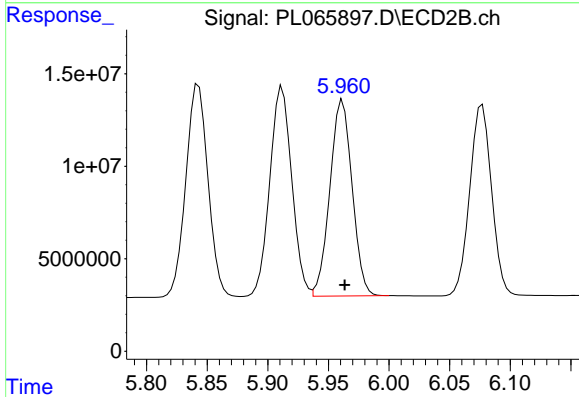
#8 Heptachlor epoxide
 R.T.: 5.612 min
 Delta R.T.: -0.002 min
 Response: 146791695
 Conc: 47.27 ng/ml



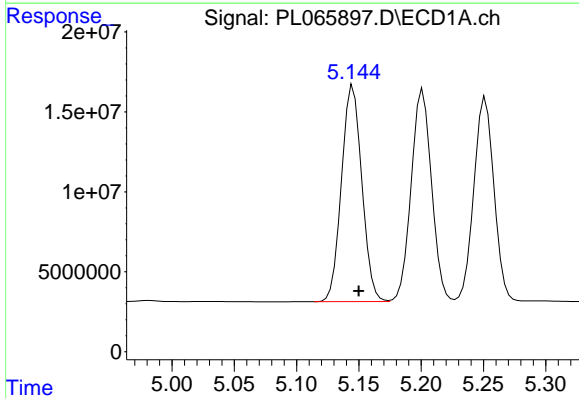
#9 Endosulfan I
 R.T.: 5.252 min
 Delta R.T.: -0.004 min
 Response: 142620980
 Conc: 49.49 ng/ml

Instrument :
 ECD_L
ClientSampled :
 PB135533BS

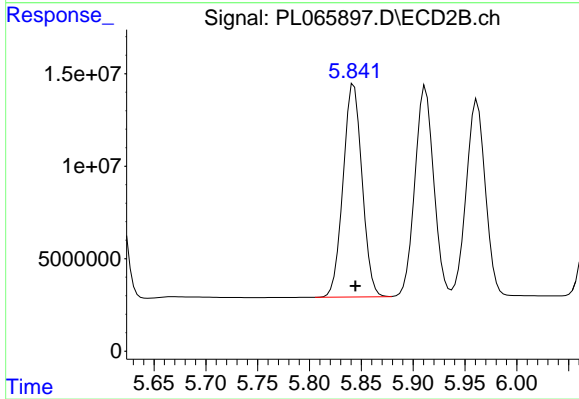
Manual Integrations
APPROVED
 Ankita
 4/7/2021 4:50:11 PM



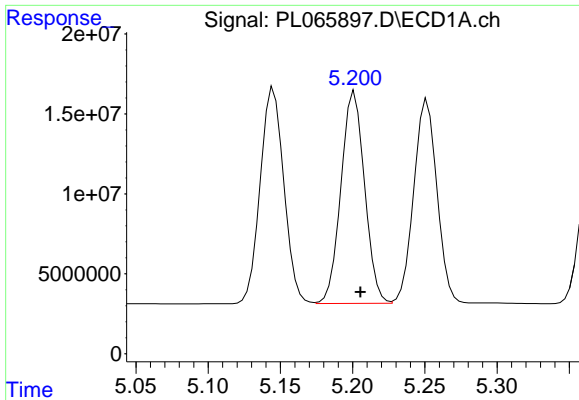
#9 Endosulfan I
 R.T.: 5.962 min
 Delta R.T.: -0.002 min
 Response: 135365163
 Conc: 49.31 ng/ml



#10 gamma-Chlordane
 R.T.: 5.145 min
 Delta R.T.: -0.005 min
 Response: 154465776
 Conc: 49.08 ng/ml



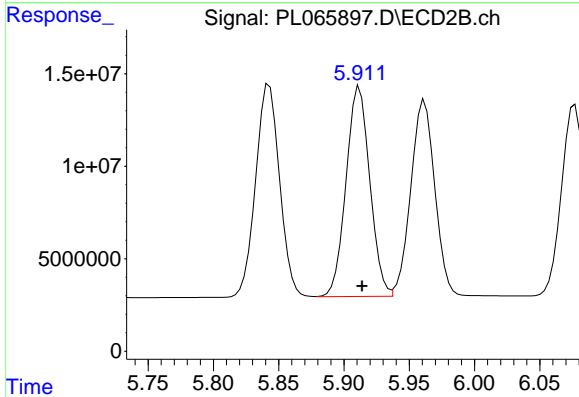
#10 gamma-Chlordane
 R.T.: 5.843 min
 Delta R.T.: -0.002 min
 Response: 146745223
 Conc: 48.91 ng/ml



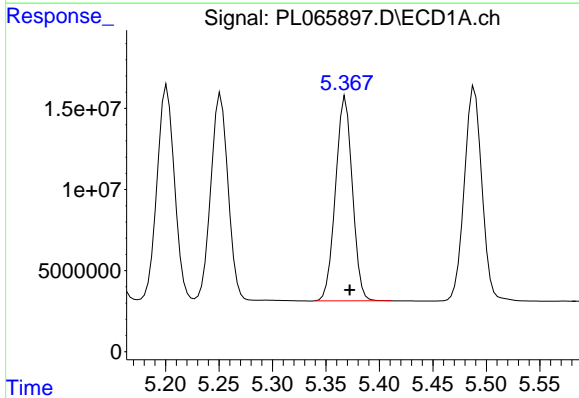
#11 alpha-Chlordane
 R.T.: 5.201 min
 Delta R.T.: -0.004 min
 Response: 150645273
 Conc: 48.42 ng/ml

Instrument :
 ECD_L
ClientSampled :
 PB135533BS

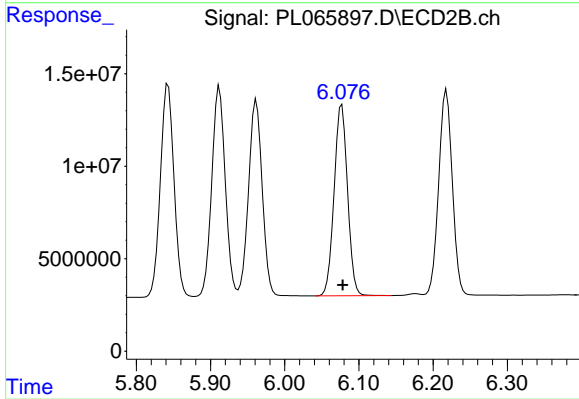
Manual Integrations
APPROVED
 Ankita
 4/7/2021 4:50:11 PM



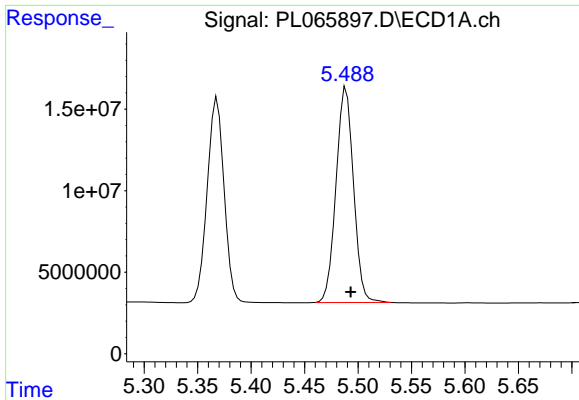
#11 alpha-Chlordane
 R.T.: 5.912 min
 Delta R.T.: -0.002 min
 Response: 143699606
 Conc: 48.56 ng/ml



#12 4,4'-DDE
 R.T.: 5.368 min
 Delta R.T.: -0.004 min
 Response: 138188516
 Conc: 50.09 ng/ml



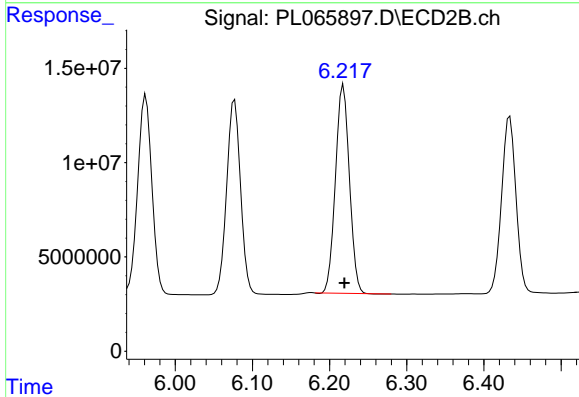
#12 4,4'-DDE
 R.T.: 6.077 min
 Delta R.T.: -0.001 min
 Response: 130160176
 Conc: 49.82 ng/ml



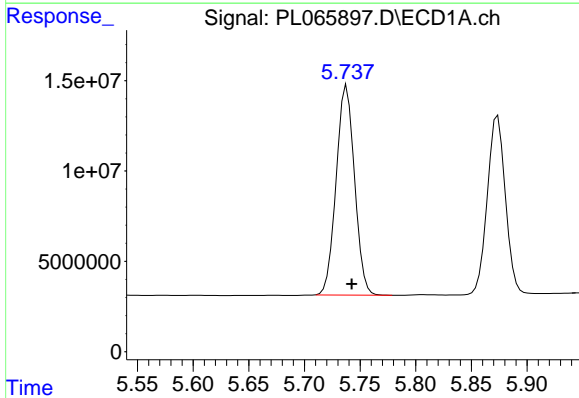
#13 Dieldrin
 R.T.: 5.489 min
 Delta R.T.: -0.004 min
 Response: 150301632
 Conc: 51.45 ng/ml

Instrument :
 ECD_L
ClientSampled :
 PB135533BS

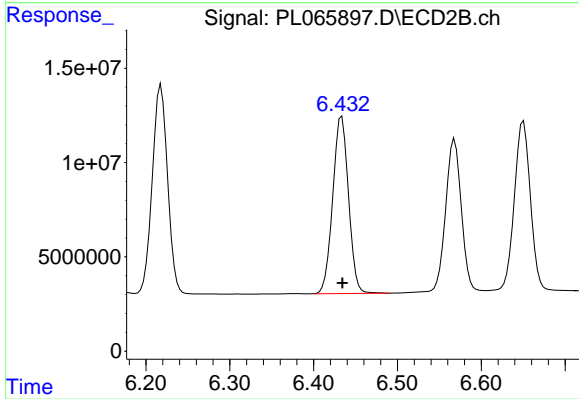
Manual Integrations
APPROVED
 Ankita
 4/7/2021 4:50:11 PM



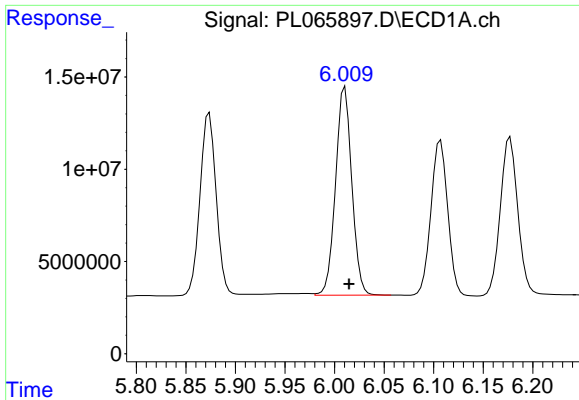
#13 Dieldrin
 R.T.: 6.218 min
 Delta R.T.: -0.001 min
 Response: 138945475
 Conc: 49.30 ng/ml



#14 Endrin
 R.T.: 5.738 min
 Delta R.T.: -0.004 min
 Response: 133280294
 Conc: 49.36 ng/ml



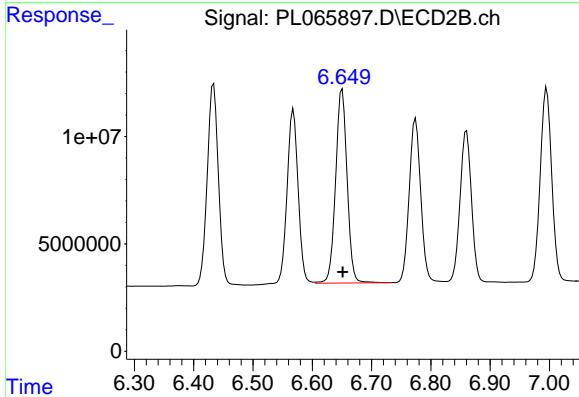
#14 Endrin
 R.T.: 6.434 min
 Delta R.T.: 0.000 min
 Response: 122536097
 Conc: 49.20 ng/ml



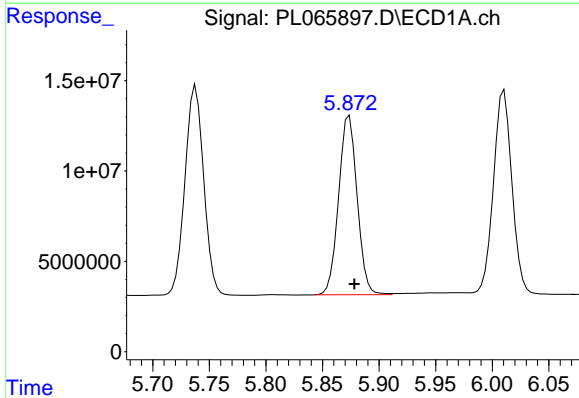
#15 Endosulfan II
 R.T.: 6.011 min
 Delta R.T.: -0.004 min
 Response: 128879189
 Conc: 51.89 ng/ml

Instrument :
 ECD_L
ClientSampled :
 PB135533BS

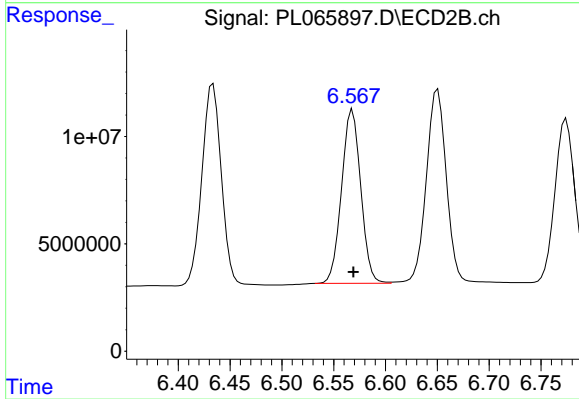
Manual Integrations
APPROVED
 Ankita
 4/7/2021 4:50:11 PM



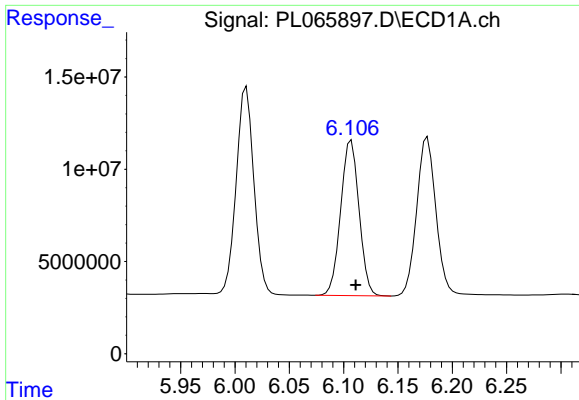
#15 Endosulfan II
 R.T.: 6.650 min
 Delta R.T.: 0.000 min
 Response: 121728144
 Conc: 51.50 ng/ml



#16 4,4'-DDD
 R.T.: 5.874 min
 Delta R.T.: -0.005 min
 Response: 112854296
 Conc: 49.74 ng/ml



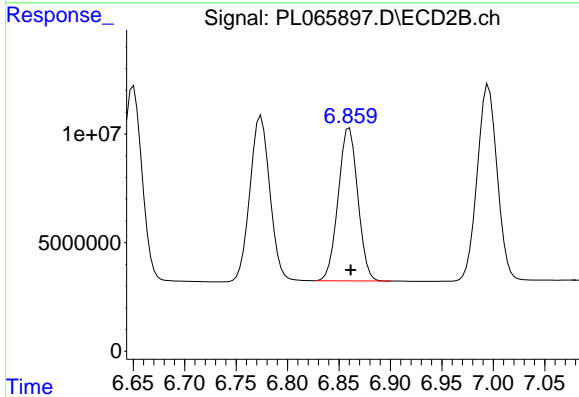
#16 4,4'-DDD
 R.T.: 6.568 min
 Delta R.T.: 0.000 min
 Response: 104202136
 Conc: 49.44 ng/ml



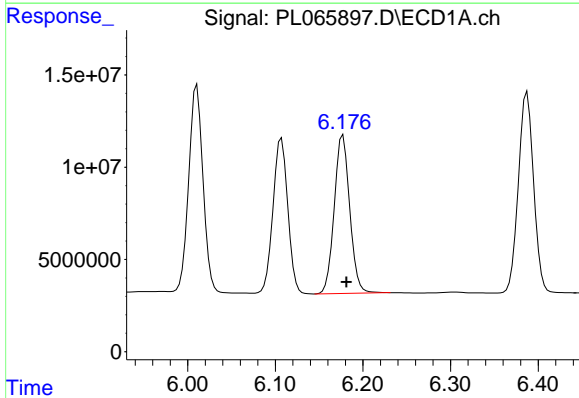
#17 4,4'-DDT
 R.T.: 6.106 min
 Delta R.T.: -0.005 min
 Response: 99103038
 Conc: 47.04 ng/ml m

Instrument :
 ECD_L
ClientSampled :
 PB135533BS

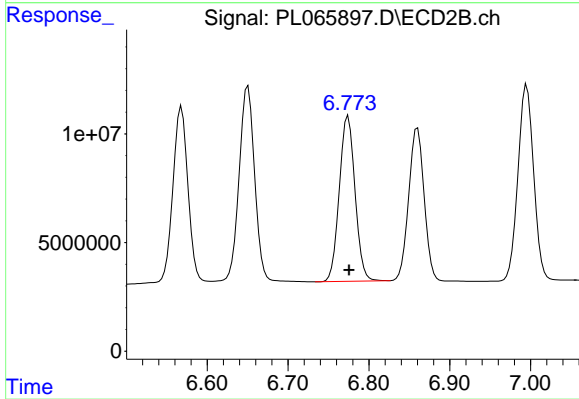
Manual Integrations
APPROVED
 Ankita
 4/7/2021 4:50:11 PM



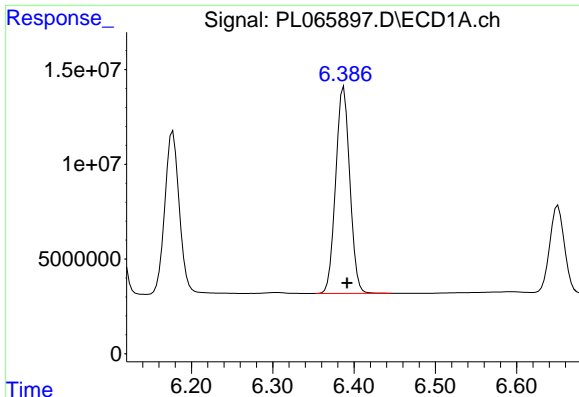
#17 4,4'-DDT
 R.T.: 6.860 min
 Delta R.T.: -0.001 min
 Response: 93258552
 Conc: 41.65 ng/ml



#18 Endrin aldehyde
 R.T.: 6.177 min
 Delta R.T.: -0.004 min
 Response: 105569381
 Conc: 55.79 ng/ml



#18 Endrin aldehyde
 R.T.: 6.774 min
 Delta R.T.: -0.001 min
 Response: 102756729
 Conc: 54.15 ng/ml

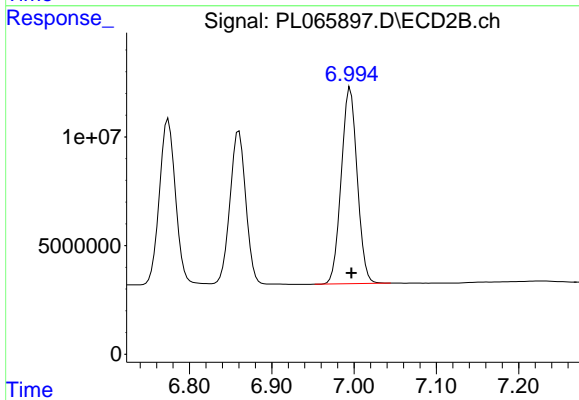


#19 Endosulfan Sulfate
 R.T.: 6.387 min
 Delta R.T.: -0.004 min
 Response: 131682175
 Conc: 51.03 ng/ml

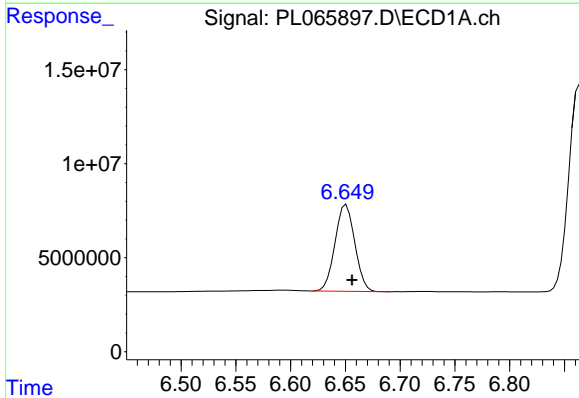
Instrument :
 ECD_L
 ClientSampled :
 PB135533BS

Manual Integrations
 APPROVED

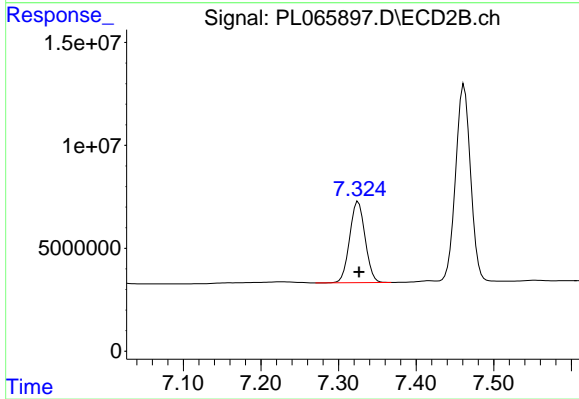
Ankita
 4/7/2021 4:50:11 PM



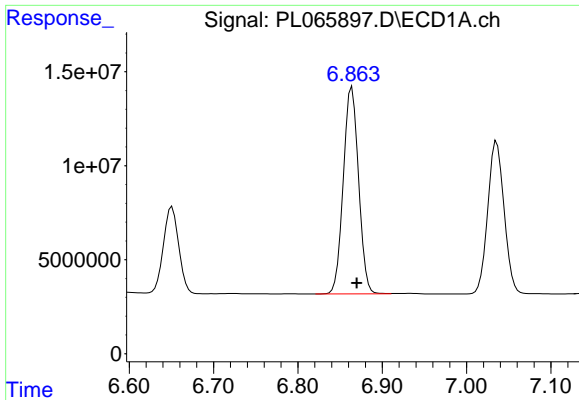
#19 Endosulfan Sulfate
 R.T.: 6.995 min
 Delta R.T.: -0.001 min
 Response: 121676303
 Conc: 50.16 ng/ml



#20 Methoxychlor
 R.T.: 6.651 min
 Delta R.T.: -0.005 min
 Response: 57832146
 Conc: 46.07 ng/ml



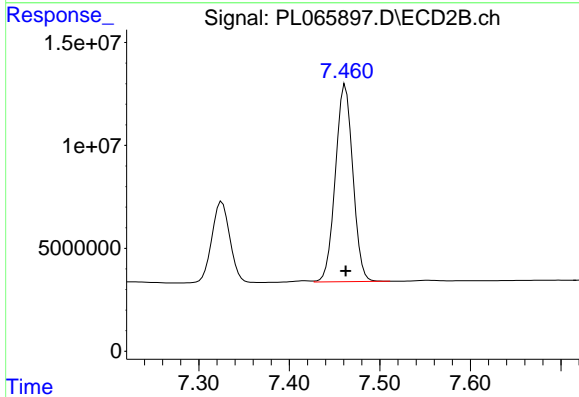
#20 Methoxychlor
 R.T.: 7.325 min
 Delta R.T.: 0.000 min
 Response: 54473511
 Conc: 43.01 ng/ml



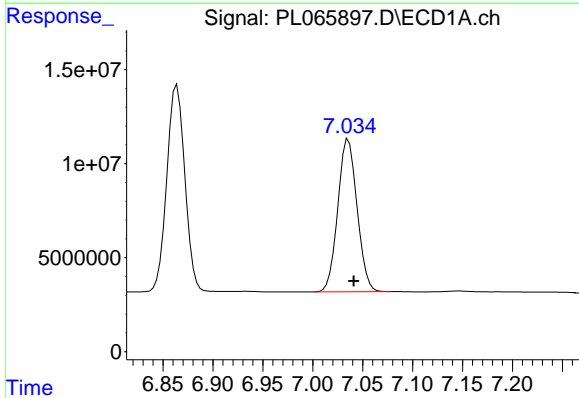
#21 Endrin ketone
 R.T.: 6.864 min
 Delta R.T.: -0.006 min
 Response: 138748120
 Conc: 50.59 ng/ml

Instrument :
 ECD_L
 ClientSampled :
 PB135533BS

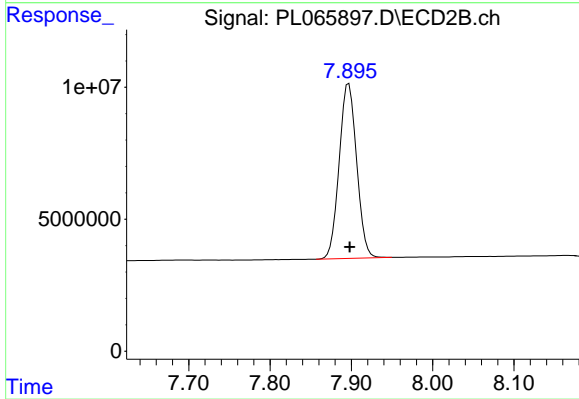
Manual Integrations
APPROVED
 Ankita
 4/7/2021 4:50:11 PM



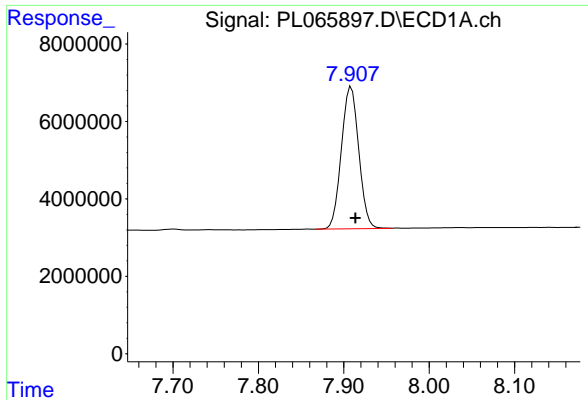
#21 Endrin ketone
 R.T.: 7.462 min
 Delta R.T.: 0.000 min
 Response: 128318948
 Conc: 49.92 ng/ml



#22 Mirex
 R.T.: 7.036 min
 Delta R.T.: -0.005 min
 Response: 109203376
 Conc: 52.14 ng/ml



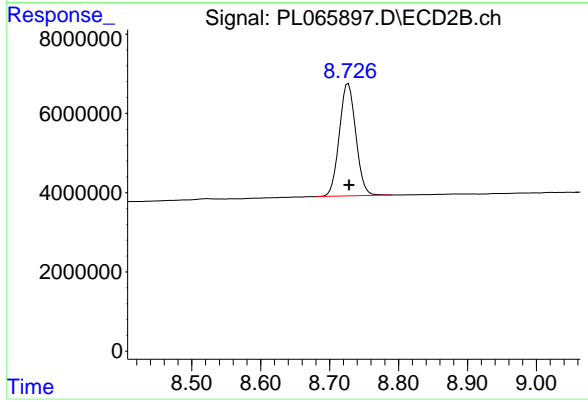
#22 Mirex
 R.T.: 7.897 min
 Delta R.T.: 0.000 min
 Response: 98822133
 Conc: 50.63 ng/ml



#28 Decachlorobiphenyl
R.T.: 7.909 min
Delta R.T.: -0.005 min
Response: 51921848
Conc: 22.42 ng/ml

Instrument :
ECD_L
ClientSampleId :
PB135533BS

Manual Integrations
APPROVED
Ankita
4/7/2021 4:50:11 PM



#28 Decachlorobiphenyl
R.T.: 8.727 min
Delta R.T.: -0.001 min
Response: 47260423
Conc: 20.96 ng/ml