

Data Path : Z:\pestpcbsrv\HPCHEM1\ECD_L\Data\PL040621\
 Data File : PL065898.D
 Signal(s) : Signal #1: ECD1A.ch Signal #2: ECD2B.ch
 Acq On : 06 Apr 2021 11:53
 Operator : AR\AJ
 Sample : M1894-04
 Misc :
 ALS Vial : 9 Sample Multiplier: 1

Instrument :
 ECD_L
 ClientSampleId :
 0156-AMENDED-CP-COMP

Integration File signal 1: autoint1.e
 Integration File signal 2: autoint2.e
 Quant Time: Apr 07 04:29:49 2021
 Quant Method : Z:\pestpcbsrv\HPCHEM1\ECD_L\methods\PL033121.M
 Quant Title : GC Extractables
 QLast Update : Wed Mar 31 15:57:28 2021
 Response via : Initial Calibration
 Integrator: ChemStation

Volume Inj. : 1 µl
 Signal #1 Phase : ZB-MR2 Signal #2 Phase: ZB-MR1
 Signal #1 Info : 30M x 0.32mm x0.2 Signal #2 Info : 30M x 0.32mm x0.5µm

Compound	RT#1	RT#2	Resp#1	Resp#2	ng/ml	ng/ml

System Monitoring Compounds						
1) SA Tetrachlo...	3.280	3.781	54551686	52698759	20.941	19.198
28) SA Decachlor...	7.911	8.730	40362567	37683793	17.427	16.715

Target Compounds

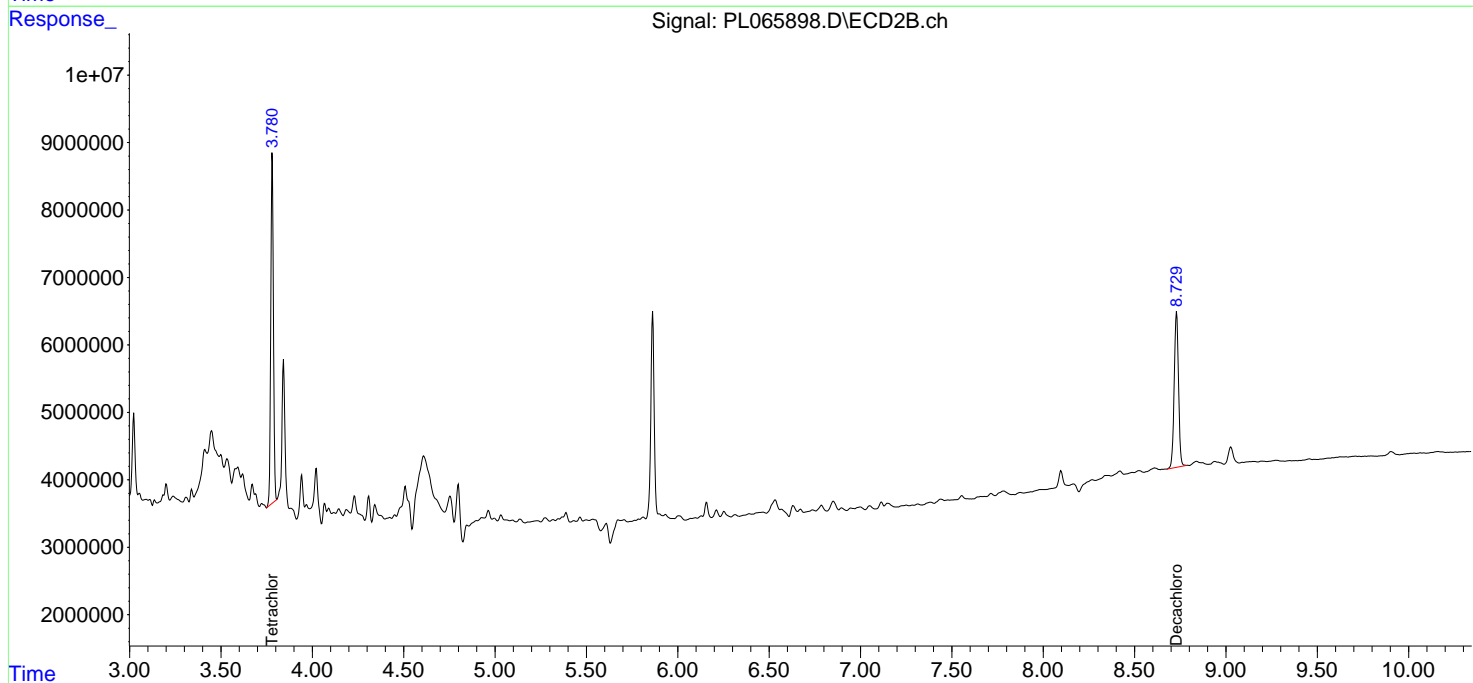
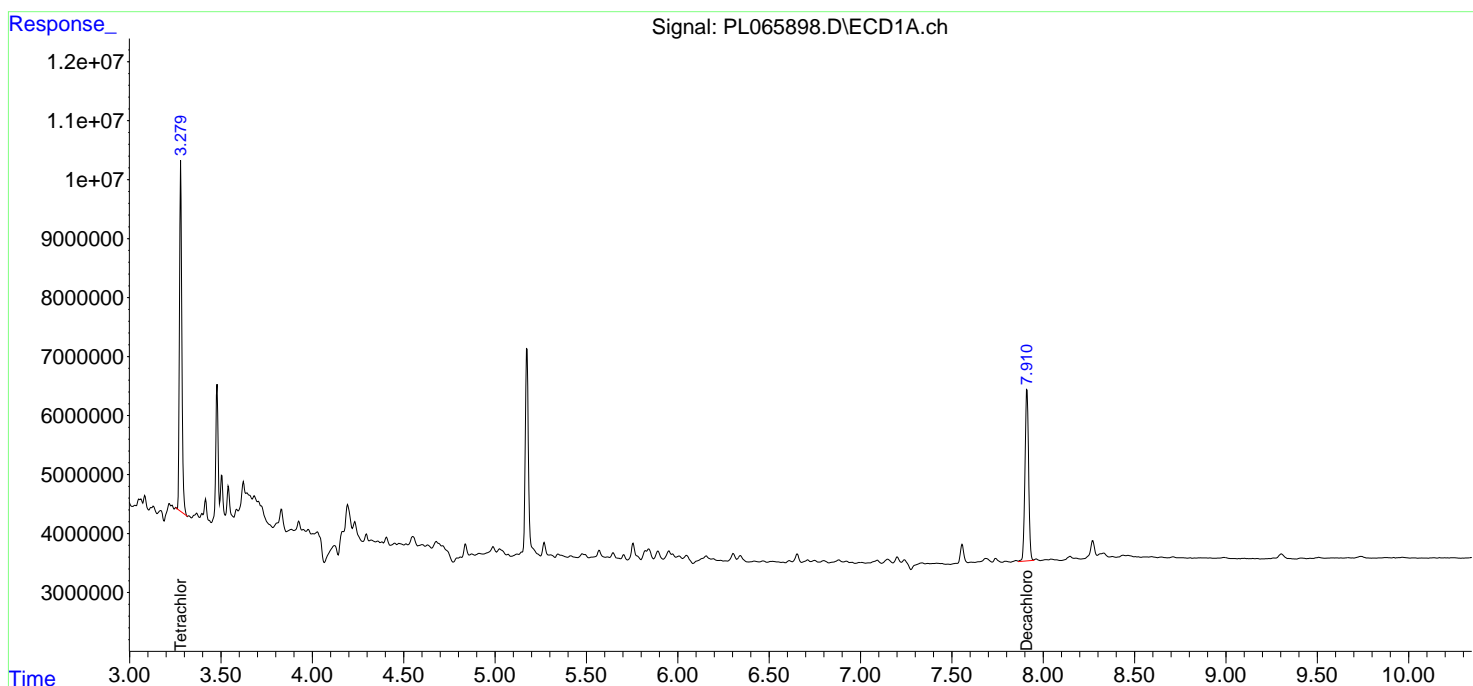
(f)=RT Delta > 1/2 Window (#)=Amounts differ by > 25% (m)=manual int.

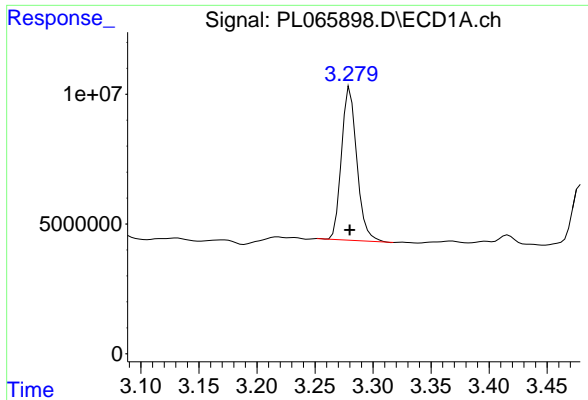
Data Path : Z:\pestpcbsrv\HPCHEM1\ECD_L\Data\PL040621\
 Data File : PL065898.D
 Signal(s) : Signal #1: ECD1A.ch Signal #2: ECD2B.ch
 Acq On : 06 Apr 2021 11:53
 Operator : AR\AJ
 Sample : M1894-04
 Misc :
 ALS Vial : 9 Sample Multiplier: 1

Instrument :
 ECD_L
 ClientSampleId :
 0156-AMENDEE-CP-COMP

Integration File signal 1: autoint1.e
 Integration File signal 2: autoint2.e
 Quant Time: Apr 07 04:29:49 2021
 Quant Method : Z:\pestpcbsrv\HPCHEM1\ECD_L\methods\PL033121.M
 Quant Title : GC Extractables
 QLast Update : Wed Mar 31 15:57:28 2021
 Response via : Initial Calibration
 Integrator: ChemStation

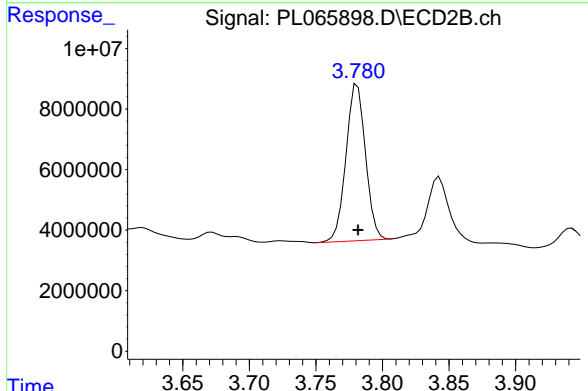
Volume Inj. : 1 µl
 Signal #1 Phase : ZB-MR2 Signal #2 Phase: ZB-MR1
 Signal #1 Info : 30M x 0.32mm x0.2 Signal #2 Info : 30M x 0.32mm x0.5µm



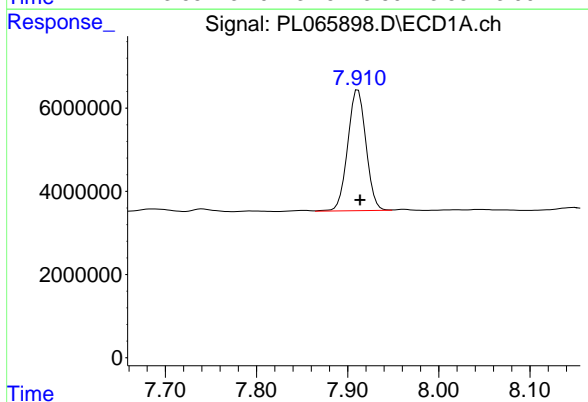


#1 Tetrachloro-m-xylene
 R.T.: 3.280 min
 Delta R.T.: 0.000 min
 Response: 54551686
 Conc: 20.94 ng/ml

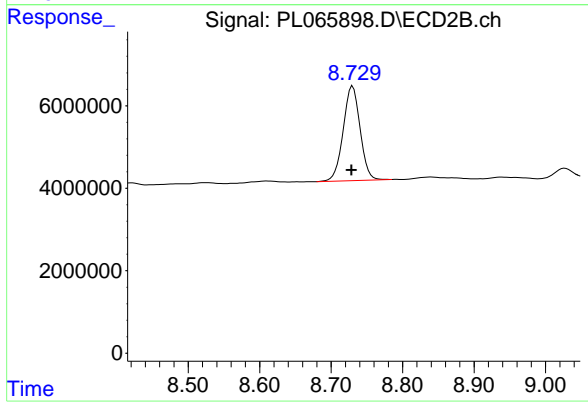
Instrument :
 ECD_L
ClientSampleId :
 0156-AMENDED-CP-COMP



#1 Tetrachloro-m-xylene
 R.T.: 3.781 min
 Delta R.T.: 0.000 min
 Response: 52698759
 Conc: 19.20 ng/ml



#28 Decachlorobiphenyl
 R.T.: 7.911 min
 Delta R.T.: -0.002 min
 Response: 40362567
 Conc: 17.43 ng/ml



#28 Decachlorobiphenyl
 R.T.: 8.730 min
 Delta R.T.: 0.002 min
 Response: 37683793
 Conc: 16.71 ng/ml