

Data Path : Z:\pestpcbsrv\HPCHEM1\ECD_L\Data\PL040621\
 Data File : PL065904.D
 Signal(s) : Signal #1: ECD1A.ch Signal #2: ECD2B.ch
 Acq On : 06 Apr 2021 13:18
 Operator : AR\AJ
 Sample : PB135554BL
 Misc :
 ALS Vial : 13 Sample Multiplier: 1

Instrument :
 ECD_L
ClientSampleId :
 PB135554BL

Manual Integrations
APPROVED
 Ankita
 4/7/2021 4:50:21 PM

Integration File signal 1: autoint1.e
 Integration File signal 2: autoint2.e
 Quant Time: Apr 07 04:31:32 2021
 Quant Method : Z:\pestpcbsrv\HPCHEM1\ECD_L\methods\PL033121.M
 Quant Title : GC Extractables
 QLast Update : Wed Mar 31 15:57:28 2021
 Response via : Initial Calibration
 Integrator: ChemStation

Volume Inj. : 1 µl
 Signal #1 Phase : ZB-MR2 Signal #2 Phase: ZB-MR1
 Signal #1 Info : 30M x 0.32mm x0.2 Signal #2 Info : 30M x 0.32mm x0.5µm

Compound	RT#1	RT#2	Resp#1	Resp#2	ng/ml	ng/ml

System Monitoring Compounds						
1) SA Tetrachlo...	3.276	3.780	47130331	50152172	18.092	18.271
28) SA Decachlor...	7.906	8.728	49417936	46168293	21.337m	20.478

Target Compounds

(f)=RT Delta > 1/2 Window (#)=Amounts differ by > 25% (m)=manual int.

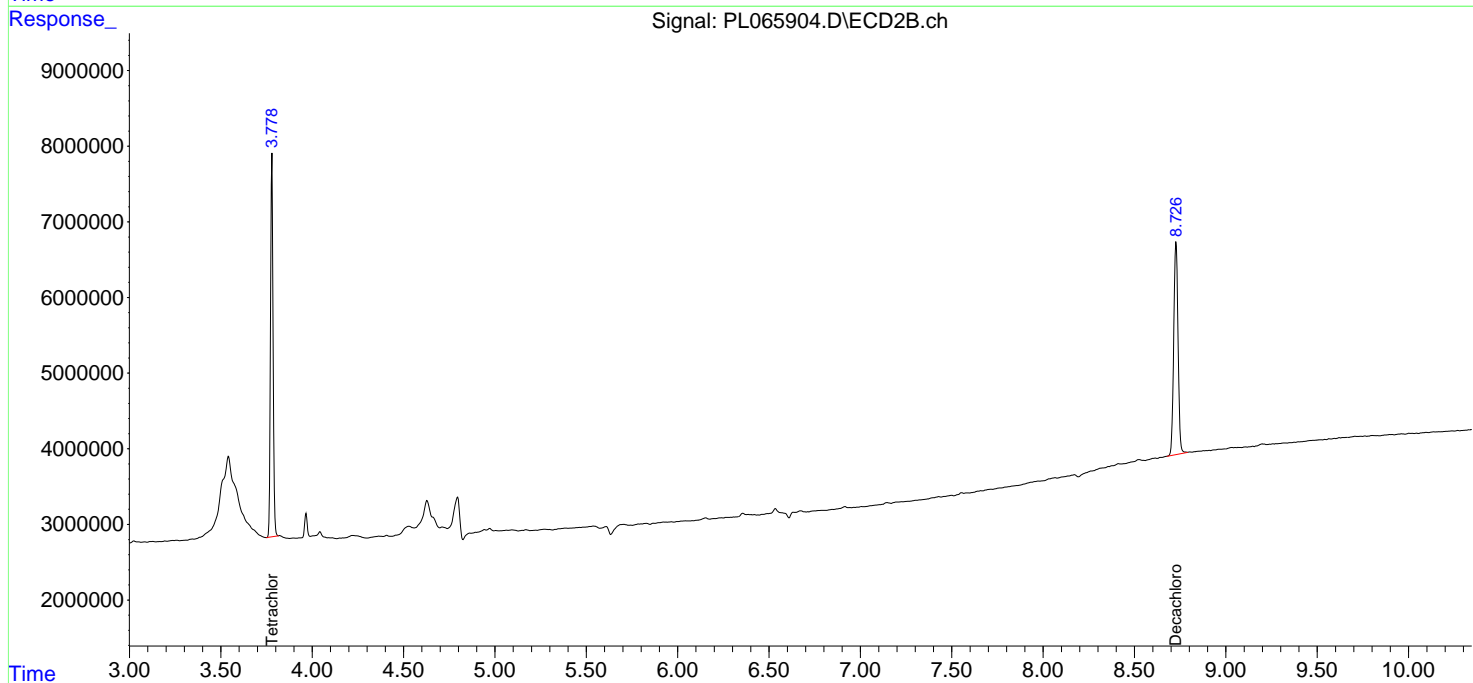
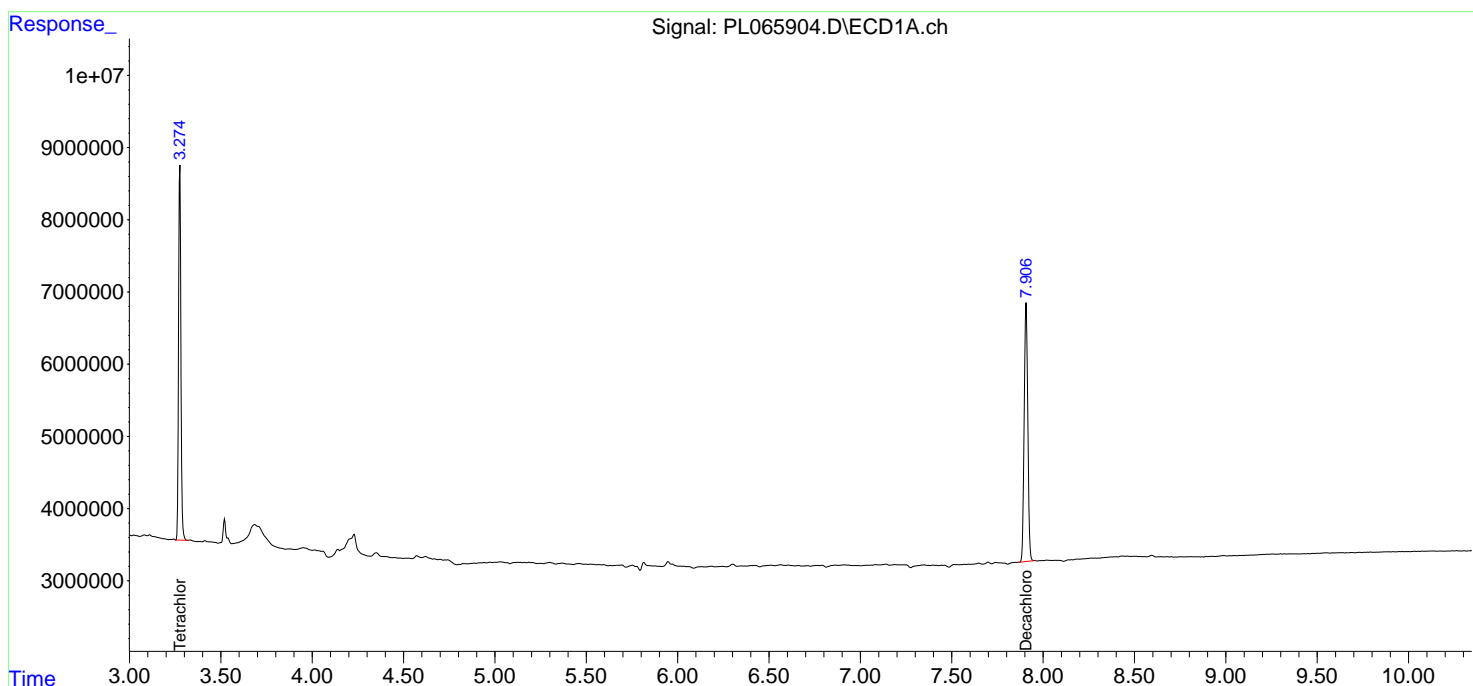
Data Path : Z:\pestpcbsrv\HPCHEM1\ECD_L\Data\PL040621\
 Data File : PL065904.D
 Signal(s) : Signal #1: ECD1A.ch Signal #2: ECD2B.ch
 Acq On : 06 Apr 2021 13:18
 Operator : AR\AJ
 Sample : PB135554BL
 Misc :
 ALS Vial : 13 Sample Multiplier: 1

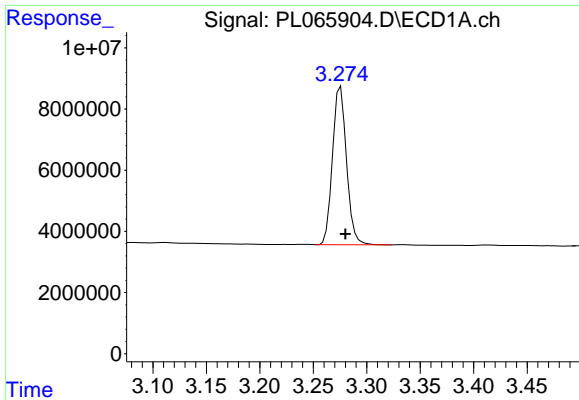
Instrument :
 ECD_L
ClientSampled :
 PB135554BL

Manual Integrations
APPROVED
 Ankita
 4/7/2021 4:50:21 PM

Integration File signal 1: autoint1.e
 Integration File signal 2: autoint2.e
 Quant Time: Apr 07 04:31:32 2021
 Quant Method : Z:\pestpcbsrv\HPCHEM1\ECD_L\methods\PL033121.M
 Quant Title : GC Extractables
 QLast Update : Wed Mar 31 15:57:28 2021
 Response via : Initial Calibration
 Integrator: ChemStation

Volume Inj. : 1 µl
 Signal #1 Phase : ZB-MR2 Signal #2 Phase: ZB-MR1
 Signal #1 Info : 30M x 0.32mm x0.2 Signal #2 Info : 30M x 0.32mm x0.5µm

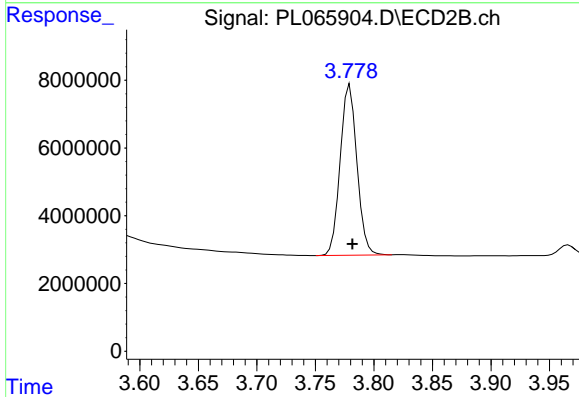




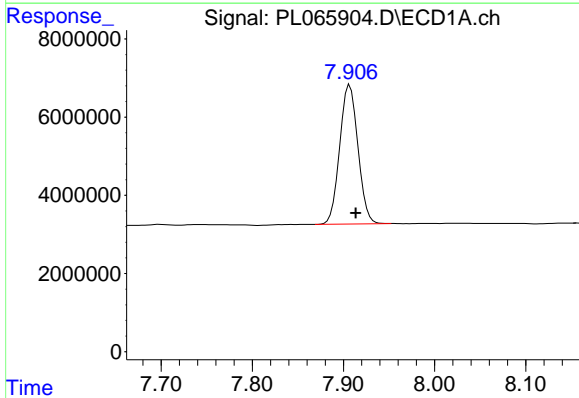
#1 Tetrachloro-m-xylene
R.T.: 3.276 min
Delta R.T.: -0.004 min
Response: 47130331
Conc: 18.09 ng/ml

Instrument :
ECD_L
ClientSampled :
PB135554BL

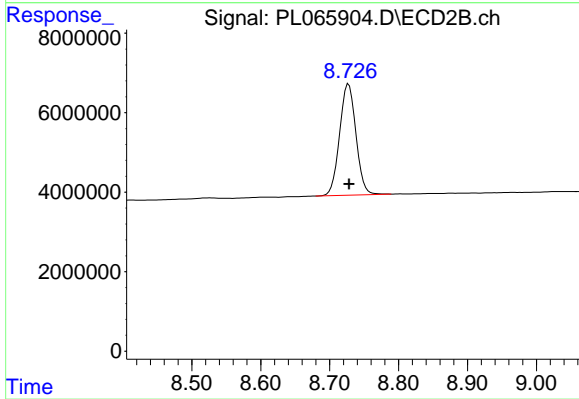
Manual Integrations
APPROVED
Ankita
4/7/2021 4:50:21 PM



#1 Tetrachloro-m-xylene
R.T.: 3.780 min
Delta R.T.: -0.002 min
Response: 50152172
Conc: 18.27 ng/ml



#28 Decachlorobiphenyl
R.T.: 7.906 min
Delta R.T.: -0.008 min
Response: 49417936
Conc: 21.34 ng/ml m



#28 Decachlorobiphenyl
R.T.: 8.728 min
Delta R.T.: 0.000 min
Response: 46168293
Conc: 20.48 ng/ml