

Data Path : Z:\pestpcbsrv\HPCHEM1\ECD\_L\Data\PL040621\  
 Data File : PL065905.D  
 Signal(s) : Signal #1: ECD1A.ch Signal #2: ECD2B.ch  
 Acq On : 06 Apr 2021 13:33  
 Operator : AR\AJ  
 Sample : PB135554BS  
 Misc :  
 ALS Vial : 14 Sample Multiplier: 1

Instrument :  
 ECD\_L  
 ClientSampled :  
 PB135554BS

Manual Integrations  
 APPROVED

Ankita  
 4/7/2021 4:50:23 PM

Integration File signal 1: autoint1.e  
 Integration File signal 2: autoint2.e  
 Quant Time: Apr 07 04:31:45 2021  
 Quant Method : Z:\pestpcbsrv\HPCHEM1\ECD\_L\methods\PL033121.M  
 Quant Title : GC Extractables  
 QLast Update : Wed Mar 31 15:57:28 2021  
 Response via : Initial Calibration  
 Integrator: ChemStation

Volume Inj. : 1 µl  
 Signal #1 Phase : ZB-MR2 Signal #2 Phase: ZB-MR1  
 Signal #1 Info : 30M x 0.32mm x0.2 Signal #2 Info : 30M x 0.32mm x0.5µm

	Compound	RT#1	RT#2	Resp#1	Resp#2	ng/ml	ng/ml
-----							
System Monitoring Compounds							
1)	SA Tetrachlo...	3.276	3.780	48641527	52163984	18.672	19.004
2)	SA Decachlor...	7.905	8.727	52236313	48202124	22.554m	21.380
Target Compounds							
2)	A alpha-BHC	3.699	4.165	198.2E6	191.8E6	48.465	47.209
3)	MA gamma-BHC...	3.971	4.444	179.0E6	176.4E6	48.346	48.171
4)	MA Heptachlor	4.256	4.929	165.3E6	163.9E6	45.875	46.449
5)	MB Aldrin	4.491	5.225	164.8E6	157.8E6	48.284m	47.797
6)	B beta-BHC	4.223	4.626	78113328	85405810	49.008	49.033m
7)	B delta-BHC	4.414	4.834	170.9E6	154.0E6	47.497	51.651
8)	B Heptachlo...	4.922	5.612	155.0E6	152.1E6	49.285m	48.987
9)	A Endosulfan I	5.251	5.962	143.1E6	136.5E6	49.643	49.705
10)	B gamma-Chl...	5.144	5.842	154.8E6	147.6E6	49.188	49.186
11)	B alpha-Chl...	5.200	5.912	150.9E6	144.8E6	48.509	48.927
12)	B 4,4'-DDE	5.367	6.076	137.8E6	130.0E6	49.962	49.775
13)	MA Dieldrin	5.488	6.217	150.2E6	140.4E6	51.427	49.812
14)	MA Endrin	5.737	6.433	135.3E6	122.1E6	50.129	49.019
15)	B Endosulfa...	6.010	6.650	128.8E6	122.5E6	51.872	51.839
16)	A 4,4'-DDD	5.873	6.568	113.2E6	105.1E6	49.885	49.878
17)	MA 4,4'-DDT	6.104	6.860	98502092	94051261	46.754m	42.004
18)	B Endrin al...	6.176	6.774	106.1E6	103.9E6	56.050	54.766
19)	B Endosulfa...	6.386	6.996	132.6E6	123.2E6	51.409	50.768
20)	A Methoxychlor	6.650	7.326	58093663	55618128	46.276	43.914
21)	B Endrin ke...	6.864	7.462	141.5E6	130.2E6	51.607	50.652
22)	Mirex	7.035	7.897	110.2E6	99399947	52.619	50.927

(f)=RT Delta > 1/2 Window (#)=Amounts differ by > 25% (m)=manual int.

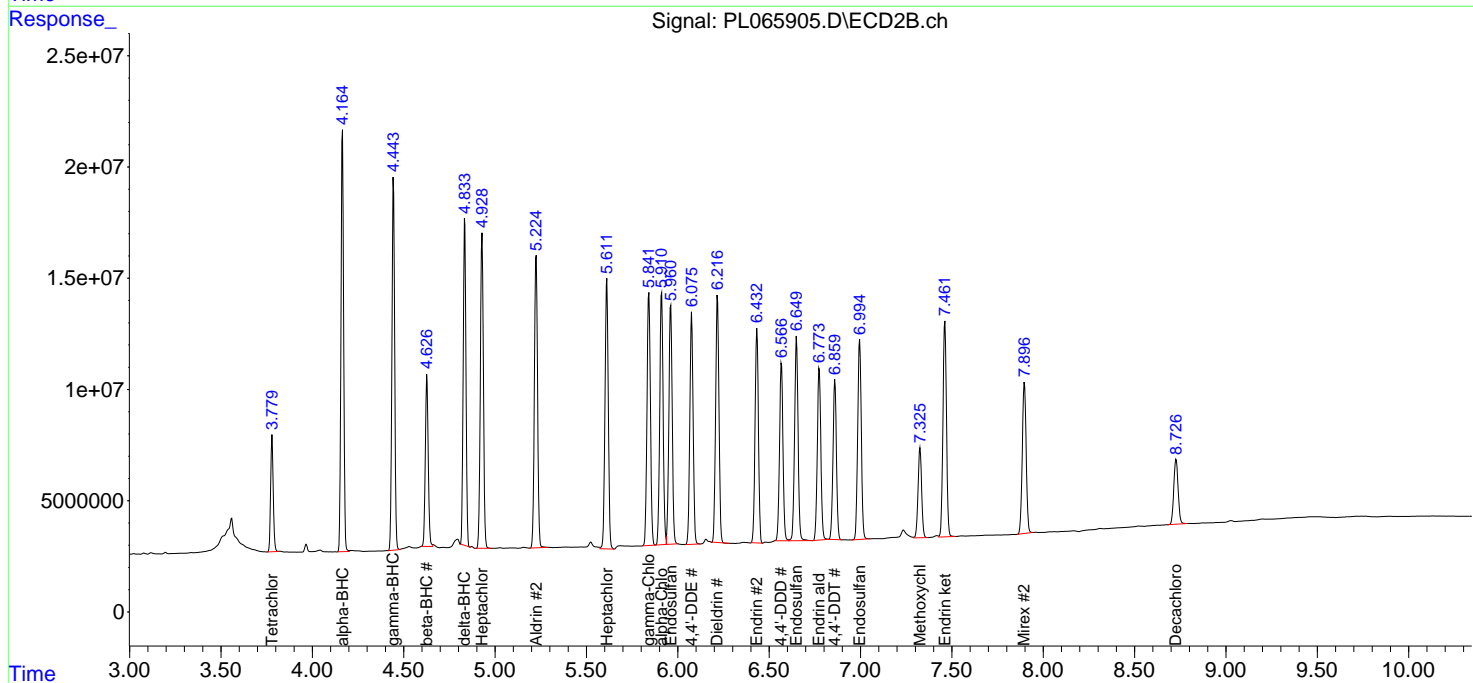
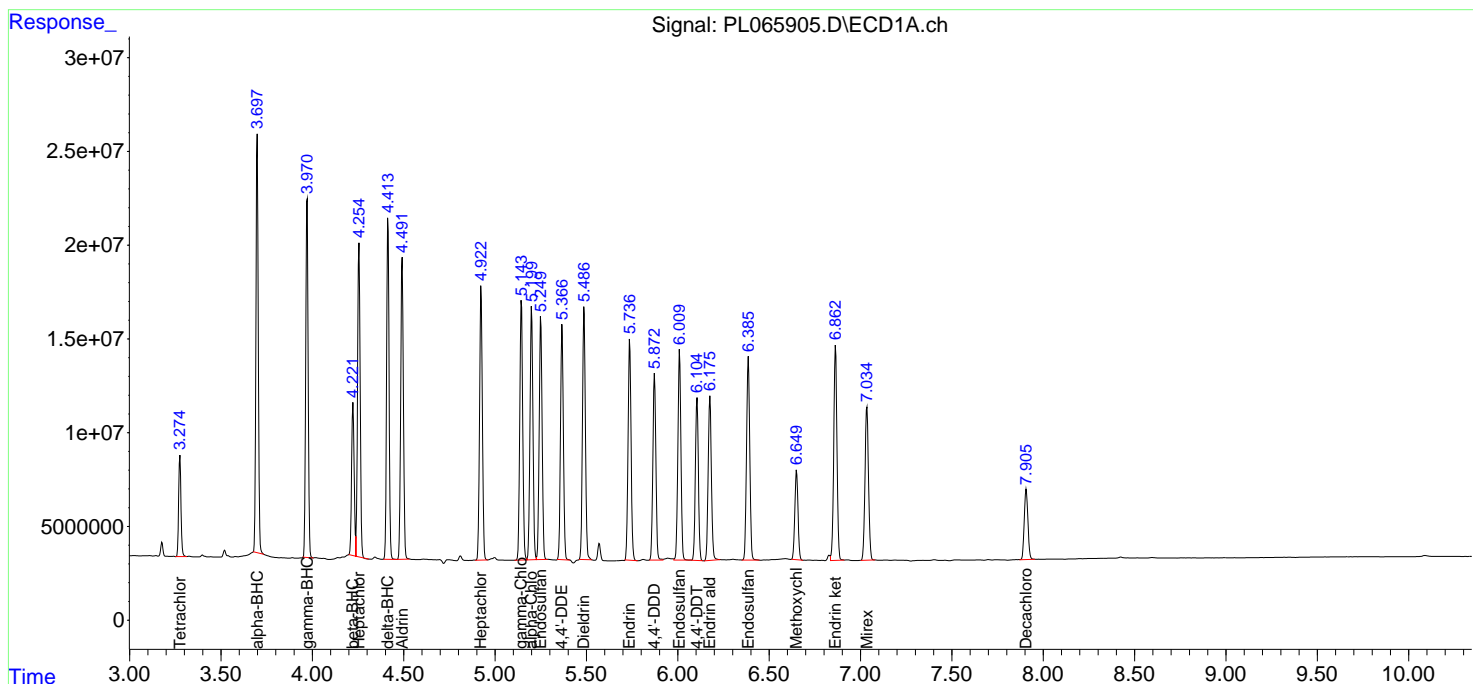
Data Path : Z:\pestpcbsrv\HPCHEM1\ECD\_L\Data\PL040621\  
 Data File : PL065905.D  
 Signal(s) : Signal #1: ECD1A.ch Signal #2: ECD2B.ch  
 Acq On : 06 Apr 2021 13:33  
 Operator : AR\AJ  
 Sample : PB13554BS  
 Misc :  
 ALS Vial : 14 Sample Multiplier: 1

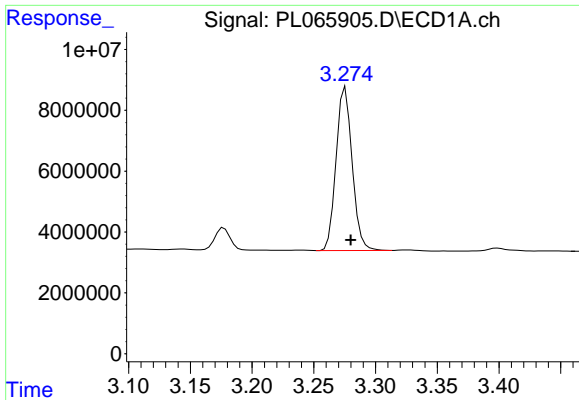
Instrument :  
 ECD\_L  
 ClientSampled :  
 PB13554BS

Manual Integrations  
**APPROVED**  
 Ankita  
 4/7/2021 4:50:23 PM

Integration File signal 1: autoint1.e  
 Integration File signal 2: autoint2.e  
 Quant Time: Apr 07 04:31:45 2021  
 Quant Method : Z:\pestpcbsrv\HPCHEM1\ECD\_L\methods\PL033121.M  
 Quant Title : GC Extractables  
 QLast Update : Wed Mar 31 15:57:28 2021  
 Response via : Initial Calibration  
 Integrator: ChemStation

Volume Inj. : 1 µl  
 Signal #1 Phase : ZB-MR2 Signal #2 Phase: ZB-MR1  
 Signal #1 Info : 30M x 0.32mm x0.2 Signal #2 Info : 30M x 0.32mm x0.5µm

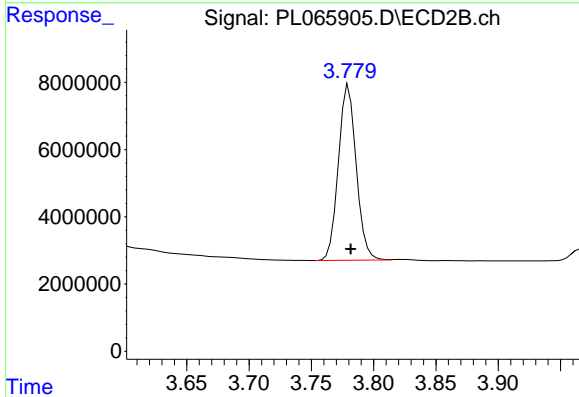




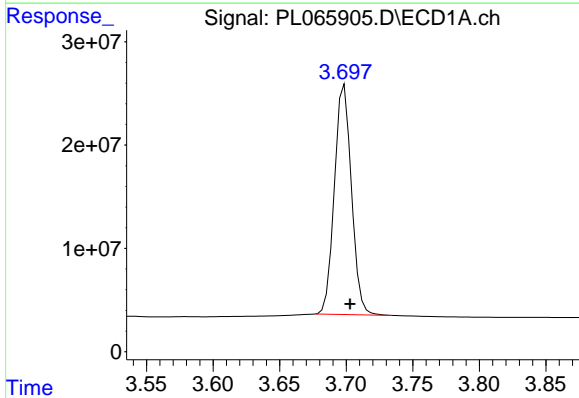
#1 Tetrachloro-m-xylene  
 R.T.: 3.276 min  
 Delta R.T.: -0.004 min  
 Response: 48641527  
 Conc: 18.67 ng/ml

Instrument :  
 ECD\_L  
 ClientSampled :  
 PB135554BS

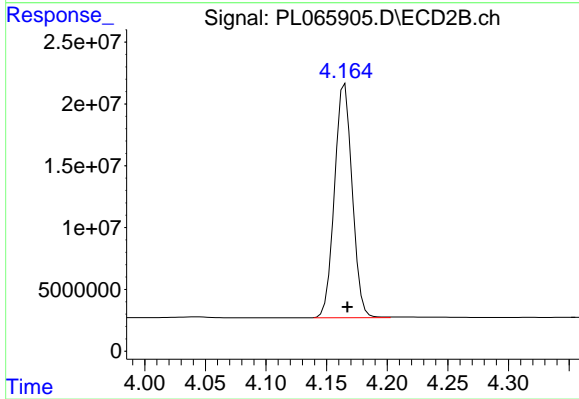
Manual Integrations  
 APPROVED  
 Ankita  
 4/7/2021 4:50:23 PM



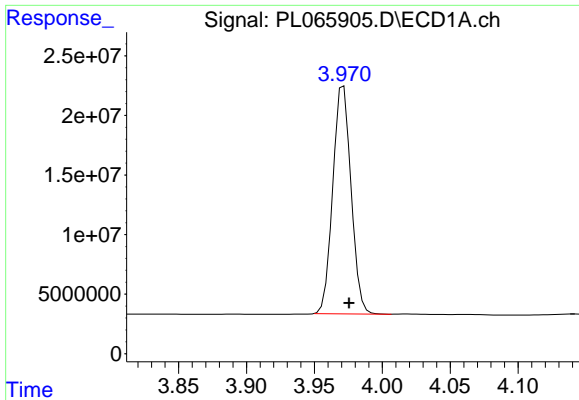
#1 Tetrachloro-m-xylene  
 R.T.: 3.780 min  
 Delta R.T.: -0.002 min  
 Response: 52163984  
 Conc: 19.00 ng/ml



#2 alpha-BHC  
 R.T.: 3.699 min  
 Delta R.T.: -0.004 min  
 Response: 198214493  
 Conc: 48.46 ng/ml



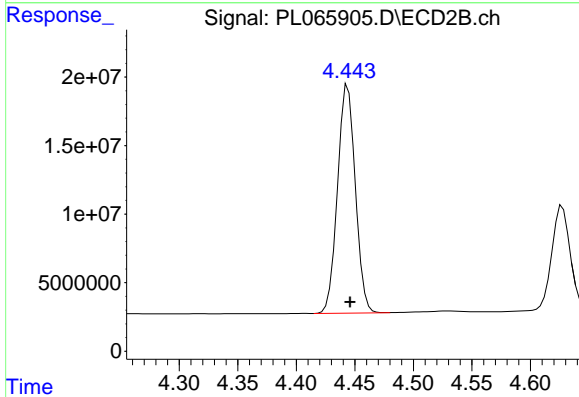
#2 alpha-BHC  
 R.T.: 4.165 min  
 Delta R.T.: -0.002 min  
 Response: 191809821  
 Conc: 47.21 ng/ml



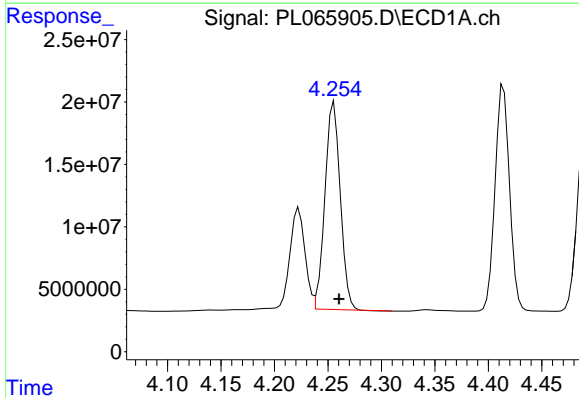
#3 gamma-BHC (Lindane)  
 R.T.: 3.971 min  
 Delta R.T.: -0.004 min  
 Response: 178960642  
 Conc: 48.35 ng/ml

Instrument :  
 ECD\_L  
 ClientSampled :  
 PB135554BS

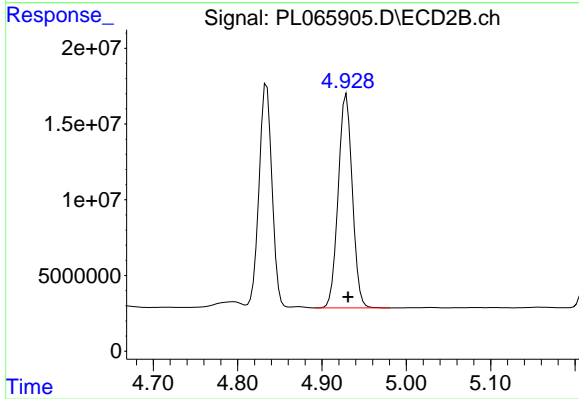
Manual Integrations  
**APPROVED**  
 Ankita  
 4/7/2021 4:50:23 PM



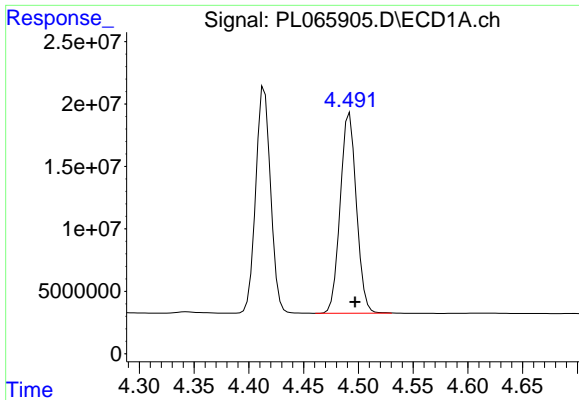
#3 gamma-BHC (Lindane)  
 R.T.: 4.444 min  
 Delta R.T.: -0.002 min  
 Response: 176362807  
 Conc: 48.17 ng/ml



#4 Heptachlor  
 R.T.: 4.256 min  
 Delta R.T.: -0.005 min  
 Response: 165259322  
 Conc: 45.88 ng/ml



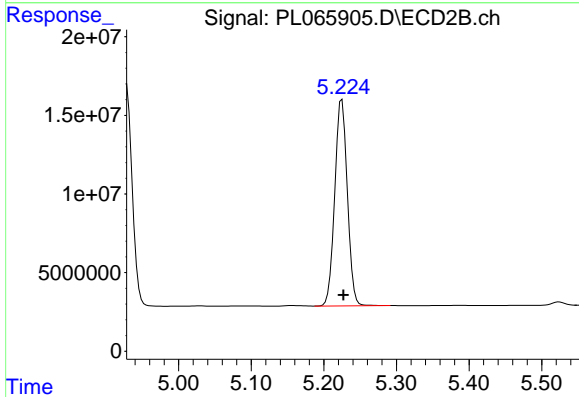
#4 Heptachlor  
 R.T.: 4.929 min  
 Delta R.T.: -0.002 min  
 Response: 163931034  
 Conc: 46.45 ng/ml



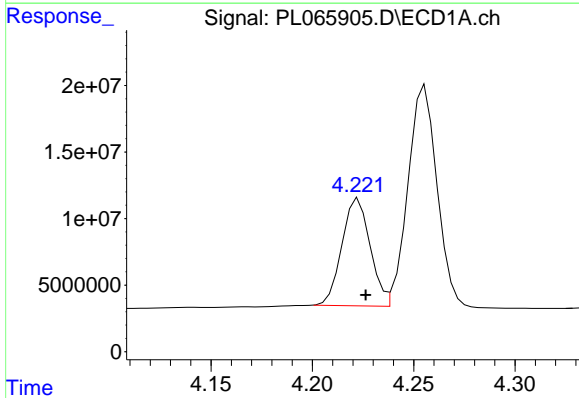
#5 Aldrin  
 R.T.: 4.491 min  
 Delta R.T.: -0.006 min  
 Response: 164848936  
 Conc: 48.28 ng/ml m

**Instrument :**  
 ECD\_L  
**ClientSampled :**  
 PB135554BS

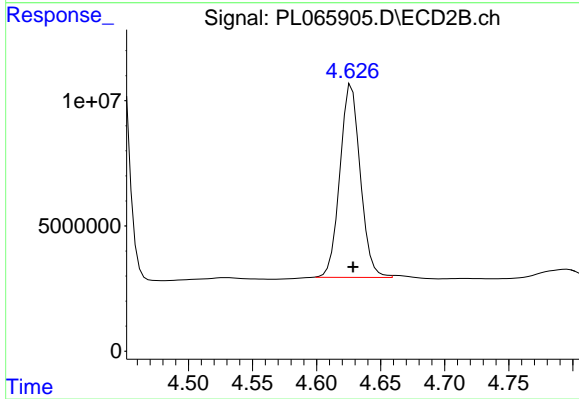
**Manual Integrations**  
**APPROVED**  
 Ankita  
 4/7/2021 4:50:23 PM



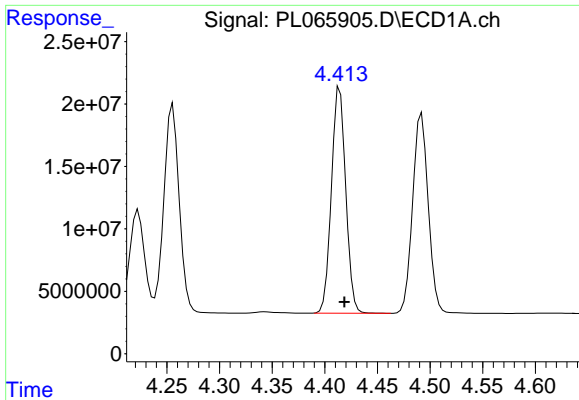
#5 Aldrin  
 R.T.: 5.225 min  
 Delta R.T.: -0.002 min  
 Response: 157809682  
 Conc: 47.80 ng/ml



#6 beta-BHC  
 R.T.: 4.223 min  
 Delta R.T.: -0.004 min  
 Response: 78113328  
 Conc: 49.01 ng/ml



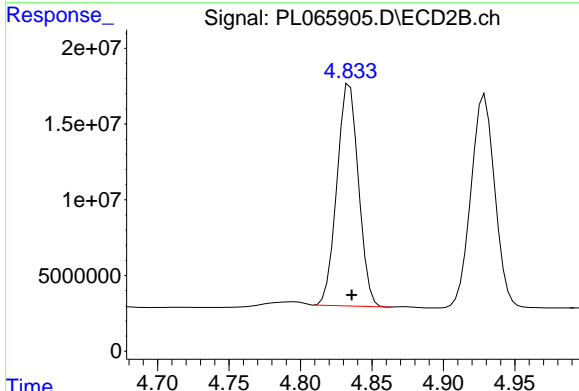
#6 beta-BHC  
 R.T.: 4.626 min  
 Delta R.T.: -0.003 min  
 Response: 85405810  
 Conc: 49.03 ng/ml m



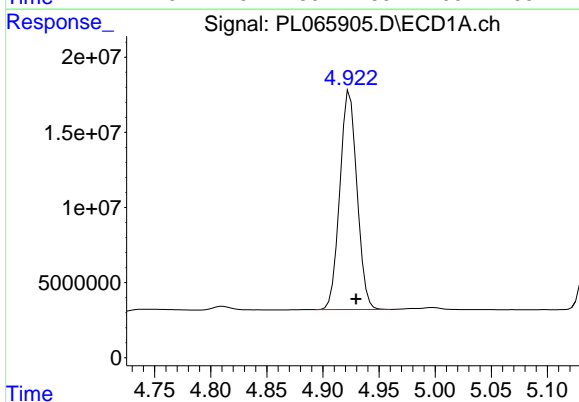
#7 delta-BHC  
R.T.: 4.414 min  
Delta R.T.: -0.004 min  
Response: 170861002  
Conc: 47.50 ng/ml

Instrument :  
ECD\_L  
ClientSampled :  
PB135554BS

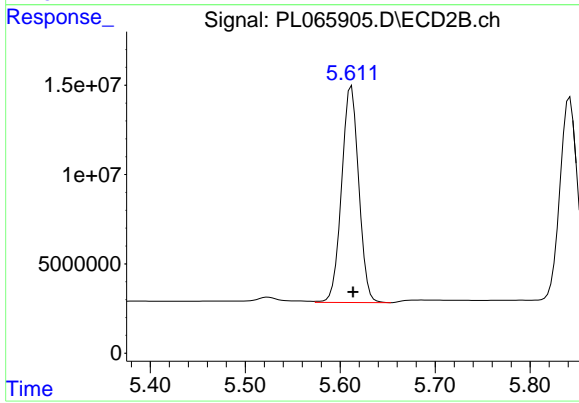
Manual Integrations  
APPROVED  
Ankita  
4/7/2021 4:50:23 PM



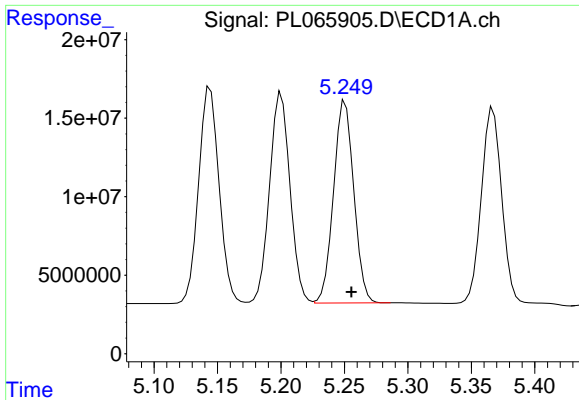
#7 delta-BHC  
R.T.: 4.834 min  
Delta R.T.: -0.002 min  
Response: 154049670  
Conc: 51.65 ng/ml



#8 Heptachlor epoxide  
R.T.: 4.922 min  
Delta R.T.: -0.007 min  
Response: 154976445  
Conc: 49.28 ng/ml m



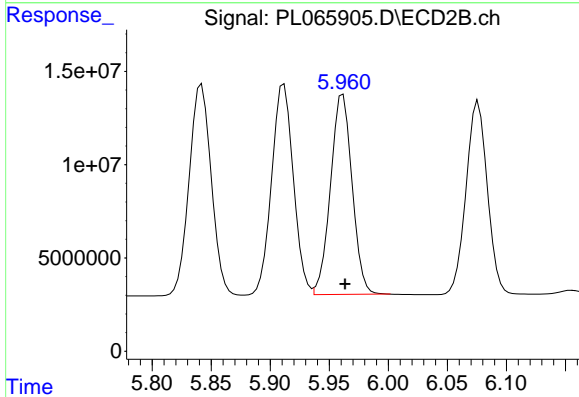
#8 Heptachlor epoxide  
R.T.: 5.612 min  
Delta R.T.: -0.002 min  
Response: 152123793  
Conc: 48.99 ng/ml



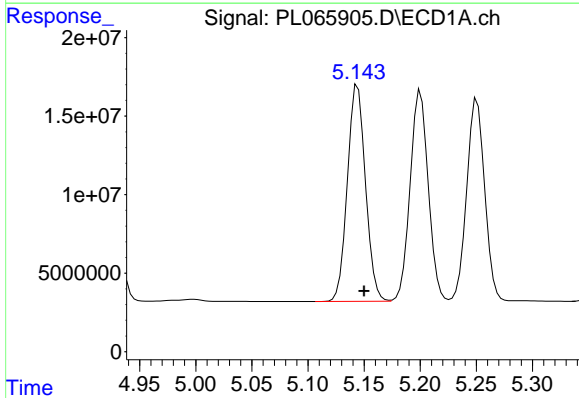
#9 Endosulfan I  
 R.T.: 5.251 min  
 Delta R.T.: -0.005 min  
 Response: 143053181  
 Conc: 49.64 ng/ml

**Instrument :**  
 ECD\_L  
**ClientSampled :**  
 PB135554BS

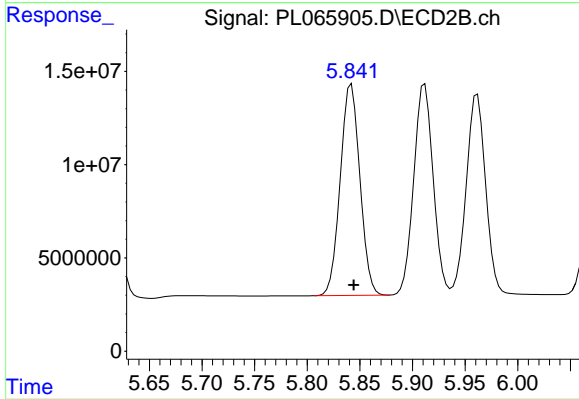
**Manual Integrations**  
**APPROVED**  
 Ankita  
 4/7/2021 4:50:23 PM



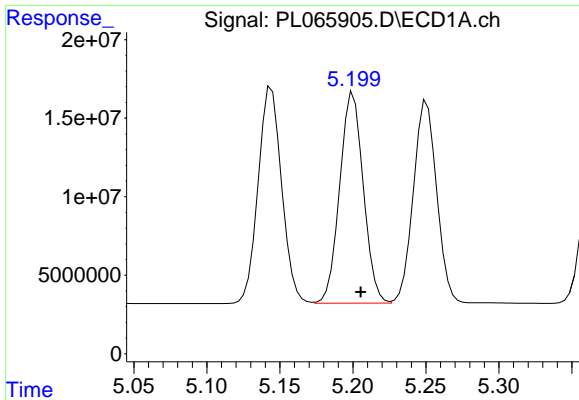
#9 Endosulfan I  
 R.T.: 5.962 min  
 Delta R.T.: -0.002 min  
 Response: 136457785  
 Conc: 49.71 ng/ml



#10 gamma-Chlordane  
 R.T.: 5.144 min  
 Delta R.T.: -0.006 min  
 Response: 154789658  
 Conc: 49.19 ng/ml



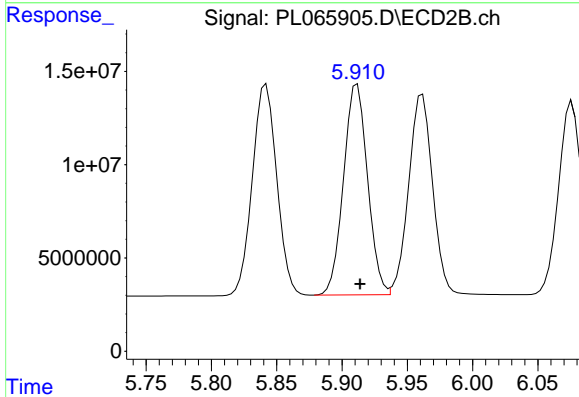
#10 gamma-Chlordane  
 R.T.: 5.842 min  
 Delta R.T.: -0.002 min  
 Response: 147572673  
 Conc: 49.19 ng/ml



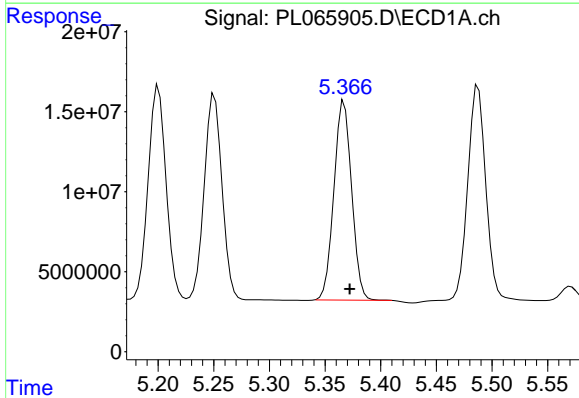
#11 alpha-Chlordane  
 R.T.: 5.200 min  
 Delta R.T.: -0.005 min  
 Response: 150934757  
 Conc: 48.51 ng/ml

**Instrument :**  
 ECD\_L  
**ClientSampled :**  
 PB135554BS

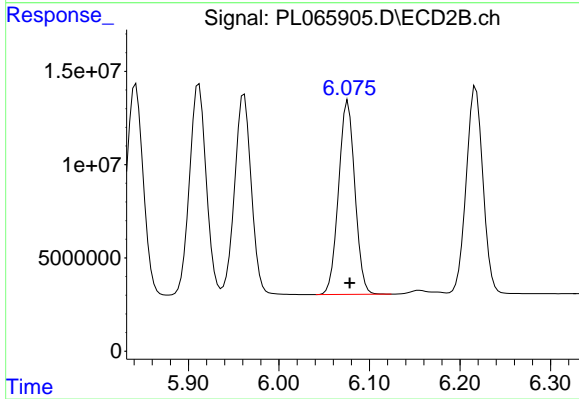
**Manual Integrations**  
**APPROVED**  
 Ankita  
 4/7/2021 4:50:23 PM



#11 alpha-Chlordane  
 R.T.: 5.912 min  
 Delta R.T.: -0.002 min  
 Response: 144779391  
 Conc: 48.93 ng/ml

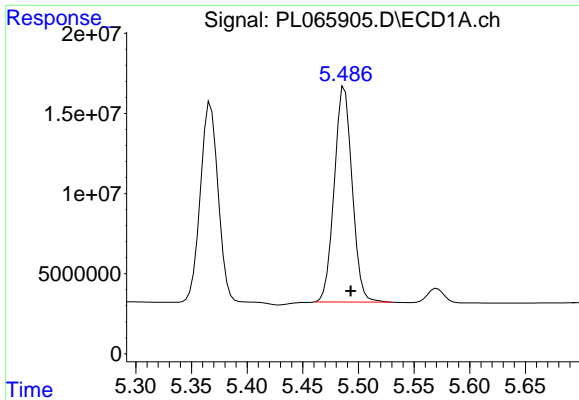


#12 4,4'-DDE  
 R.T.: 5.367 min  
 Delta R.T.: -0.005 min  
 Response: 137846566  
 Conc: 49.96 ng/ml



#12 4,4'-DDE  
 R.T.: 6.076 min  
 Delta R.T.: -0.002 min  
 Response: 130037708  
 Conc: 49.77 ng/ml

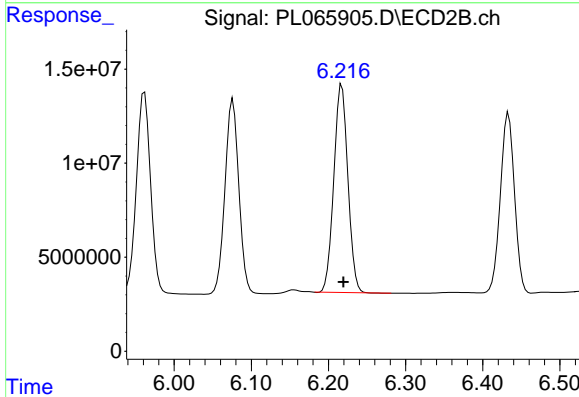




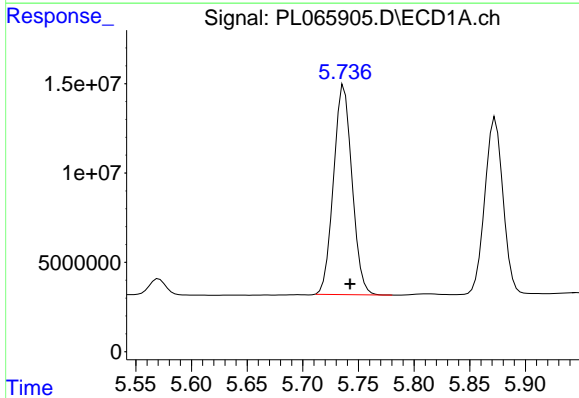
#13 Dieldrin  
 R.T.: 5.488 min  
 Delta R.T.: -0.005 min  
 Response: 150248058  
 Conc: 51.43 ng/ml

Instrument :  
 ECD\_L  
 ClientSampled :  
 PB135554BS

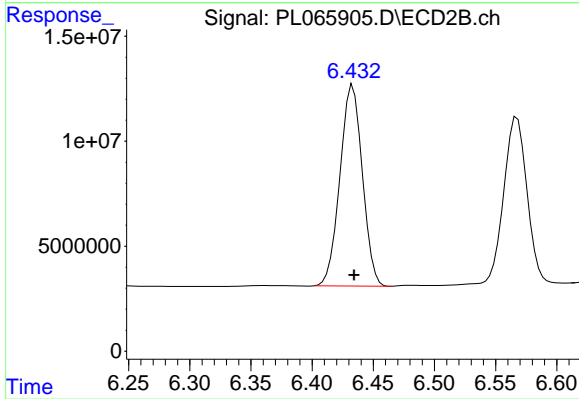
Manual Integrations  
**APPROVED**  
 Ankita  
 4/7/2021 4:50:23 PM



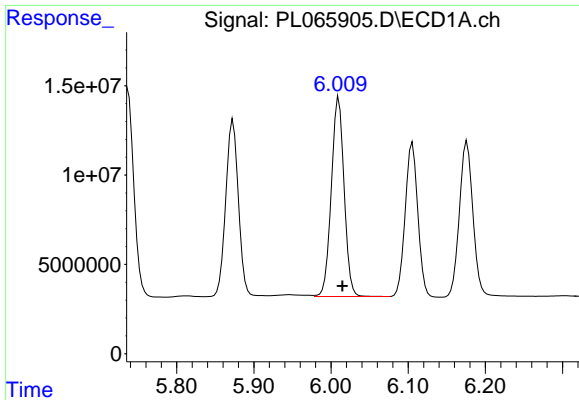
#13 Dieldrin  
 R.T.: 6.217 min  
 Delta R.T.: -0.002 min  
 Response: 140384904  
 Conc: 49.81 ng/ml



#14 Endrin  
 R.T.: 5.737 min  
 Delta R.T.: -0.005 min  
 Response: 135348513  
 Conc: 50.13 ng/ml



#14 Endrin  
 R.T.: 6.433 min  
 Delta R.T.: 0.000 min  
 Response: 122095670  
 Conc: 49.02 ng/ml

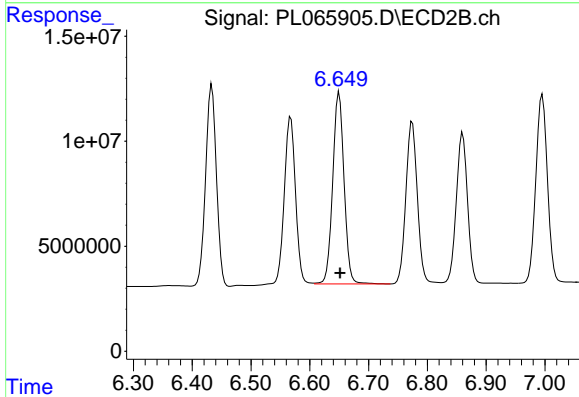


#15 Endosulfan II

R.T.: 6.010 min  
 Delta R.T.: -0.005 min  
 Response: 128827439  
 Conc: 51.87 ng/ml

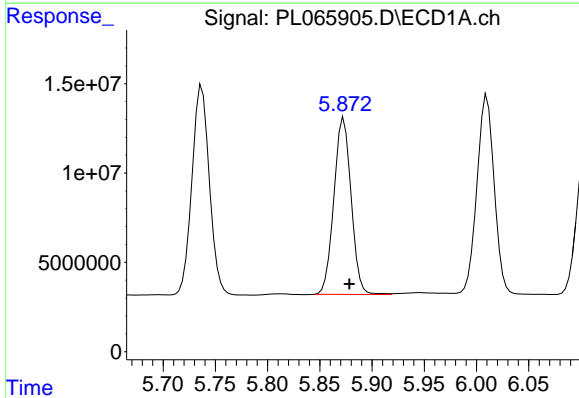
Instrument :  
 ECD\_L  
 ClientSampled :  
 PB135554BS

Manual Integrations  
 APPROVED  
 Ankita  
 4/7/2021 4:50:23 PM



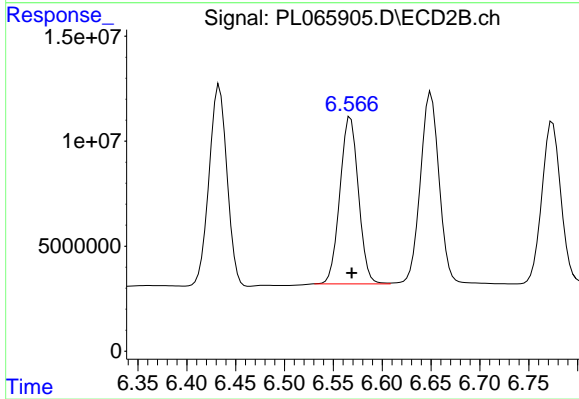
#15 Endosulfan II

R.T.: 6.650 min  
 Delta R.T.: -0.001 min  
 Response: 122516705  
 Conc: 51.84 ng/ml



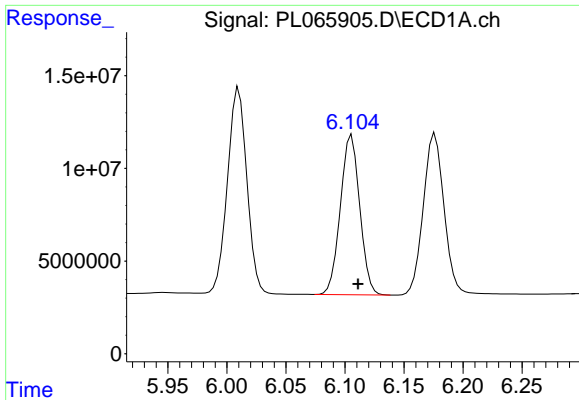
#16 4,4'-DDD

R.T.: 5.873 min  
 Delta R.T.: -0.005 min  
 Response: 113190614  
 Conc: 49.89 ng/ml



#16 4,4'-DDD

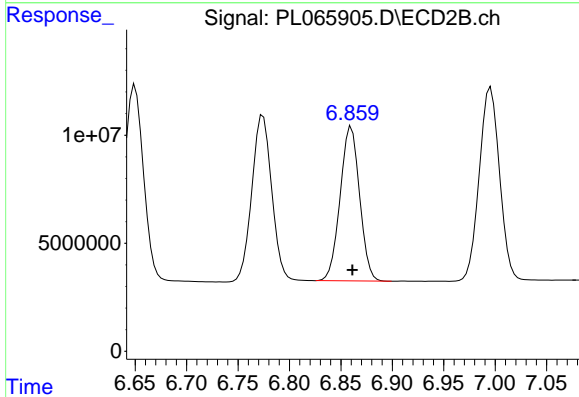
R.T.: 6.568 min  
 Delta R.T.: -0.001 min  
 Response: 105129342  
 Conc: 49.88 ng/ml



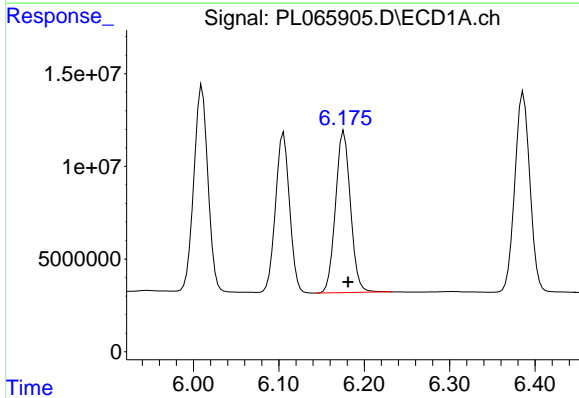
#17 4,4'-DDT  
 R.T.: 6.104 min  
 Delta R.T.: -0.007 min  
 Response: 98502092  
 Conc: 46.75 ng/ml m

Instrument :  
 ECD\_L  
 ClientSampled :  
 PB135554BS

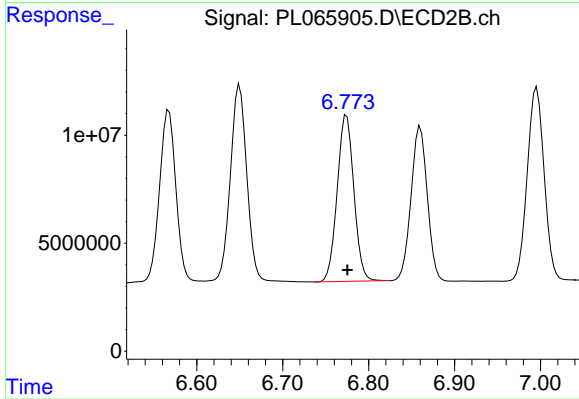
Manual Integrations  
**APPROVED**  
 Ankita  
 4/7/2021 4:50:23 PM



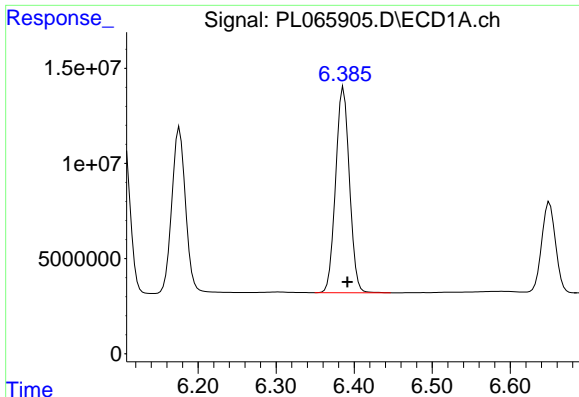
#17 4,4'-DDT  
 R.T.: 6.860 min  
 Delta R.T.: -0.001 min  
 Response: 94051261  
 Conc: 42.00 ng/ml



#18 Endrin aldehyde  
 R.T.: 6.176 min  
 Delta R.T.: -0.005 min  
 Response: 106054391  
 Conc: 56.05 ng/ml



#18 Endrin aldehyde  
 R.T.: 6.774 min  
 Delta R.T.: -0.001 min  
 Response: 103916252  
 Conc: 54.77 ng/ml

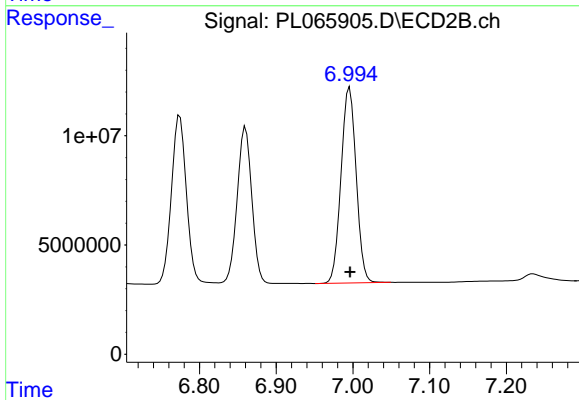


#19 Endosulfan Sulfate  
 R.T.: 6.386 min  
 Delta R.T.: -0.005 min  
 Response: 132647824  
 Conc: 51.41 ng/ml

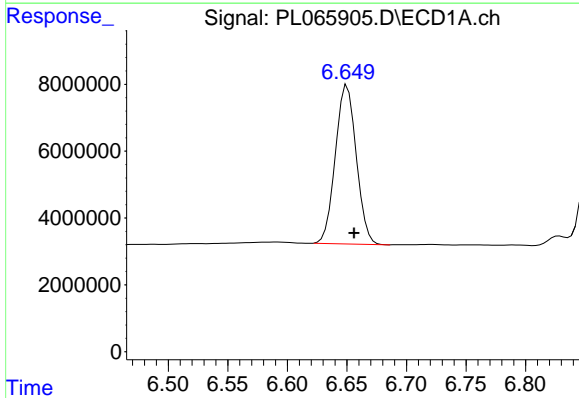
Instrument :  
 ECD\_L  
 ClientSampled :  
 PB135554BS

Manual Integrations  
 APPROVED

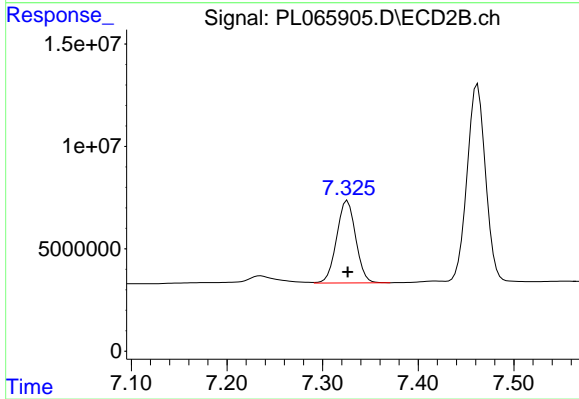
Ankita  
 4/7/2021 4:50:23 PM



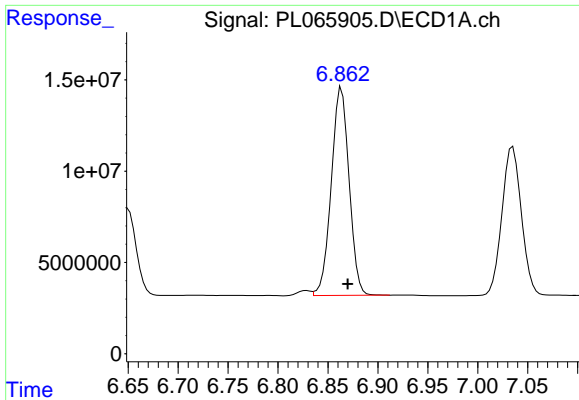
#19 Endosulfan Sulfate  
 R.T.: 6.996 min  
 Delta R.T.: 0.000 min  
 Response: 123161696  
 Conc: 50.77 ng/ml



#20 Methoxychlor  
 R.T.: 6.650 min  
 Delta R.T.: -0.006 min  
 Response: 58093663  
 Conc: 46.28 ng/ml



#20 Methoxychlor  
 R.T.: 7.326 min  
 Delta R.T.: 0.000 min  
 Response: 55618128  
 Conc: 43.91 ng/ml

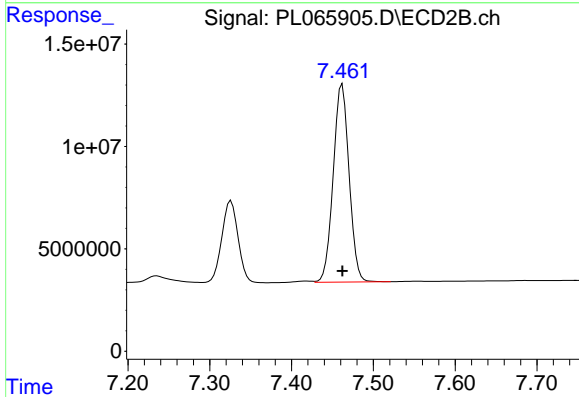


#21 Endrin ketone

R.T.: 6.864 min  
 Delta R.T.: -0.006 min  
 Response: 141527223  
 Conc: 51.61 ng/ml

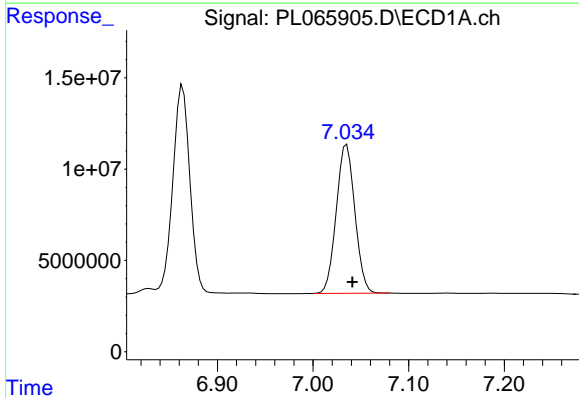
Instrument :  
 ECD\_L  
 ClientSampled :  
 PB135554BS

Manual Integrations  
 APPROVED  
 Ankita  
 4/7/2021 4:50:23 PM



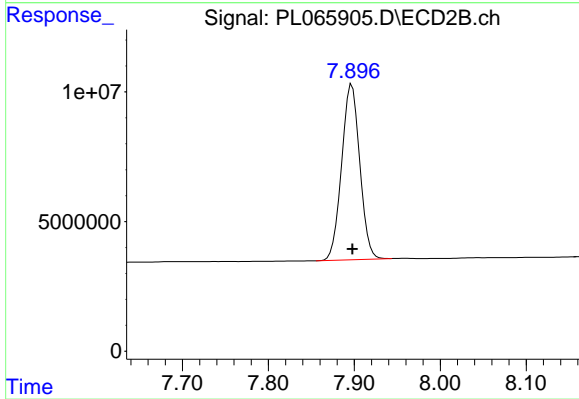
#21 Endrin ketone

R.T.: 7.462 min  
 Delta R.T.: 0.000 min  
 Response: 130190726  
 Conc: 50.65 ng/ml



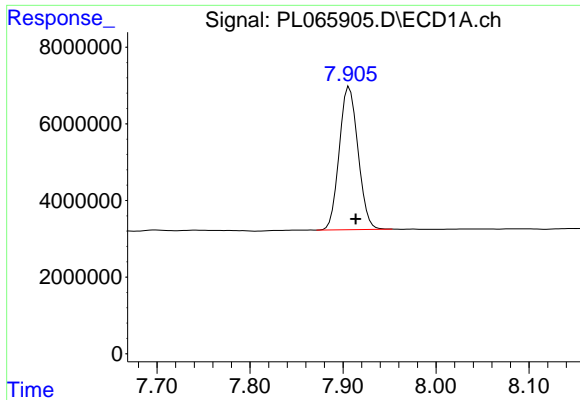
#22 Mirex

R.T.: 7.035 min  
 Delta R.T.: -0.006 min  
 Response: 110195639  
 Conc: 52.62 ng/ml



#22 Mirex

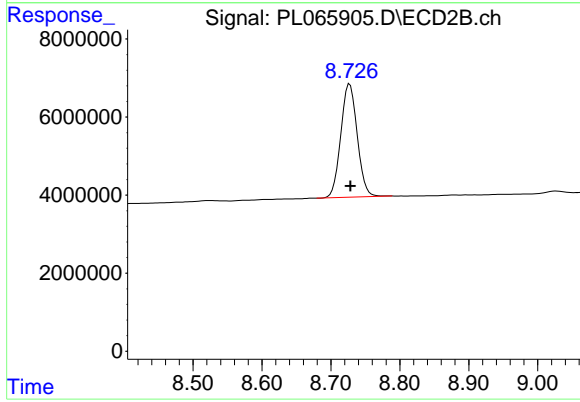
R.T.: 7.897 min  
 Delta R.T.: 0.000 min  
 Response: 99399947  
 Conc: 50.93 ng/ml



#28 Decachlorobiphenyl  
R.T.: 7.905 min  
Delta R.T.: -0.008 min  
Response: 52236313  
Conc: 22.55 ng/ml m

Instrument :  
ECD\_L  
ClientSampleId :  
PB135554BS

Manual Integrations  
APPROVED  
Ankita  
4/7/2021 4:50:23 PM



#28 Decachlorobiphenyl  
R.T.: 8.727 min  
Delta R.T.: 0.000 min  
Response: 48202124  
Conc: 21.38 ng/ml