

Data Path : Z:\pestpcbsrv\HPCHEM1\ECD\_L\Data\PL040621\  
 Data File : PL065910.D  
 Signal(s) : Signal #1: ECD1A.ch Signal #2: ECD2B.ch  
 Acq On : 06 Apr 2021 14:51  
 Operator : AR\AJ  
 Sample : M1934-01  
 Misc :  
 ALS Vial : 19 Sample Multiplier: 1

**Instrument :**  
 ECD\_L  
**ClientSampleID :**  
 TP-3

**Manual Integrations**  
**APPROVED**  
 Ankita  
 4/7/2021 4:50:29 PM

Integration File signal 1: autoint1.e  
 Integration File signal 2: autoint2.e  
 Quant Time: Apr 07 04:33:16 2021  
 Quant Method : Z:\pestpcbsrv\HPCHEM1\ECD\_L\methods\PL033121.M  
 Quant Title : GC Extractables  
 QLast Update : Wed Mar 31 15:57:28 2021  
 Response via : Initial Calibration  
 Integrator: ChemStation

Volume Inj. : 1 µl  
 Signal #1 Phase : ZB-MR2 Signal #2 Phase: ZB-MR1  
 Signal #1 Info : 30M x 0.32mm x0.2 Signal #2 Info : 30M x 0.32mm x0.5µm

Compound	RT#1	RT#2	Resp#1	Resp#2	ng/ml	ng/ml
-----						
System Monitoring Compounds						
1) SA Tetrachlo...	3.276	3.780	58922179	61930866	22.619	22.562
28) SA Decachlor...	7.906	8.727	57601037	53259333	24.871m	23.623
Target Compounds						
6) B beta-BHC	4.231	4.628	3461928	5099073	2.172	2.927m#
10) B gamma-Chl...	5.144	5.843	5840867	6997452	1.856m	2.332 #
11) B alpha-Chl...	5.200	5.912	12445437	14412487	4.000	4.871
17) MA 4,4'-DDT	6.105	6.856	2165962	2952442	1.028m	1.319 #
-----						

(f)=RT Delta > 1/2 Window (#)=Amounts differ by > 25% (m)=manual int.

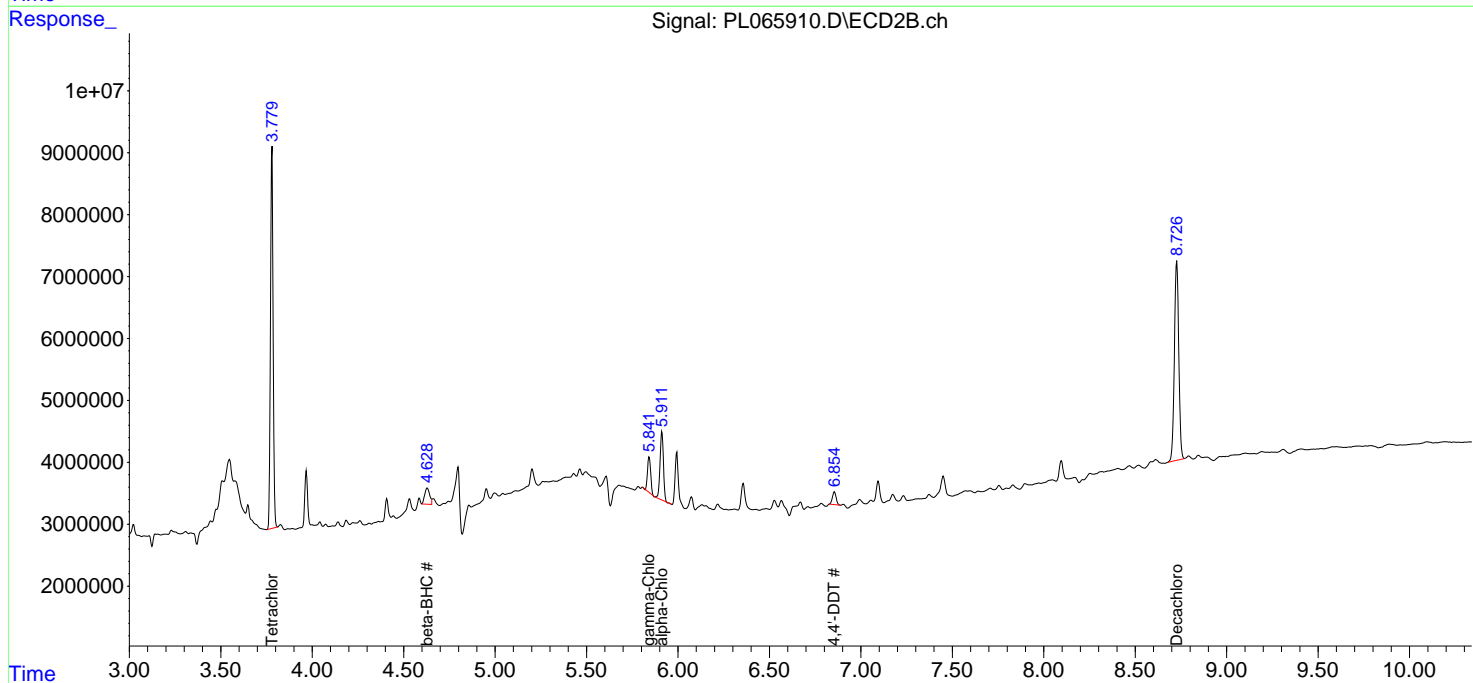
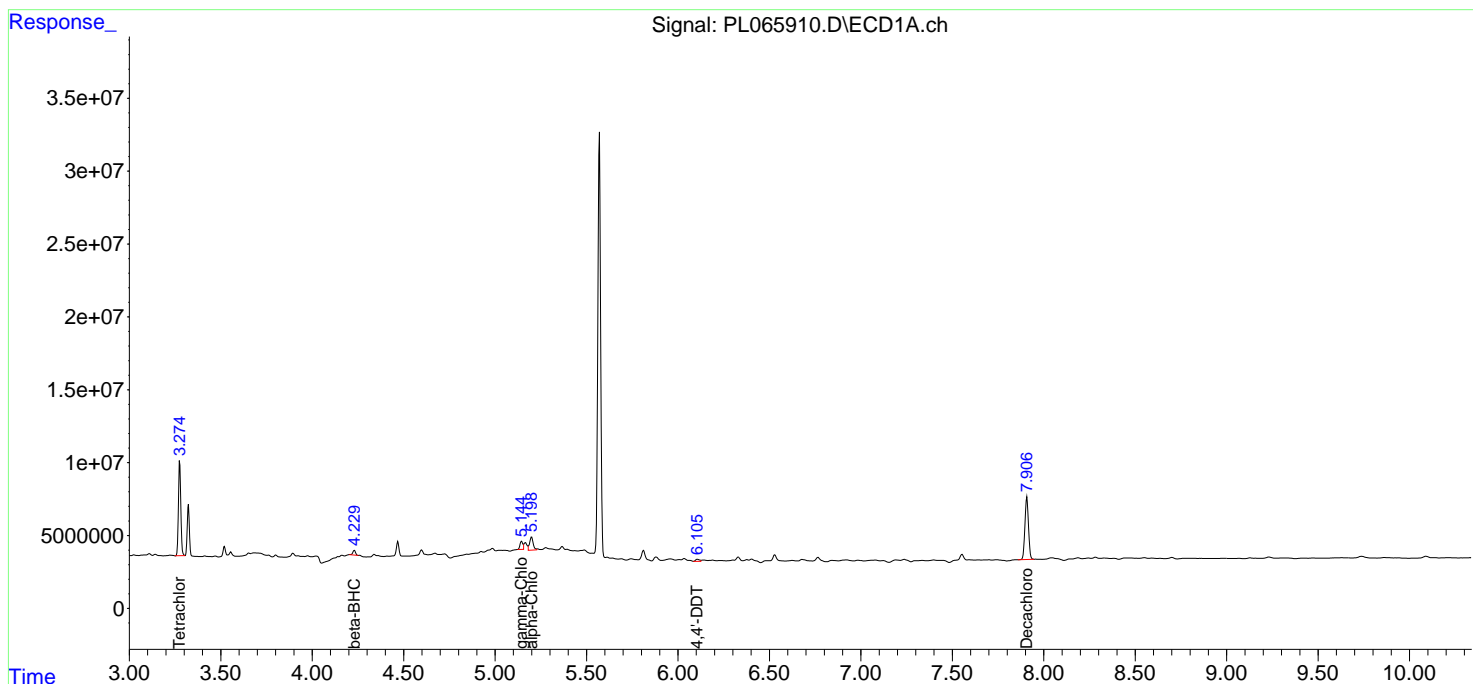
Data Path : Z:\pestpcbsrv\HPCHEM1\ECD\_L\Data\PL040621\  
 Data File : PL065910.D  
 Signal(s) : Signal #1: ECD1A.ch Signal #2: ECD2B.ch  
 Acq On : 06 Apr 2021 14:51  
 Operator : AR\AJ  
 Sample : M1934-01  
 Misc :  
 ALS Vial : 19 Sample Multiplier: 1

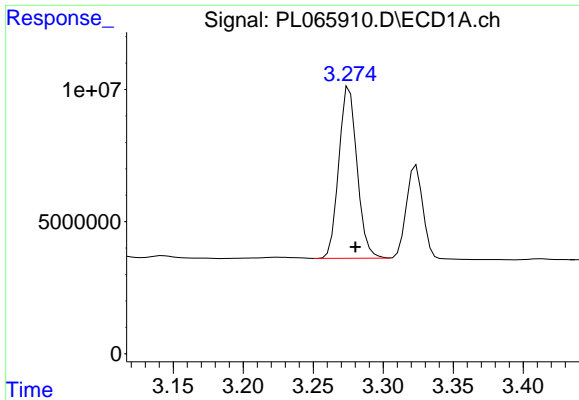
Instrument :  
 ECD\_L  
 ClientSampled :  
 TP-3

Manual Integrations  
**APPROVED**  
 Ankita  
 4/7/2021 4:50:29 PM

Integration File signal 1: autoint1.e  
 Integration File signal 2: autoint2.e  
 Quant Time: Apr 07 04:33:16 2021  
 Quant Method : Z:\pestpcbsrv\HPCHEM1\ECD\_L\methods\PL033121.M  
 Quant Title : GC Extractables  
 QLast Update : Wed Mar 31 15:57:28 2021  
 Response via : Initial Calibration  
 Integrator: ChemStation

Volume Inj. : 1 µl  
 Signal #1 Phase : ZB-MR2 Signal #2 Phase: ZB-MR1  
 Signal #1 Info : 30M x 0.32mm x0.2 Signal #2 Info : 30M x 0.32mm x0.5µm

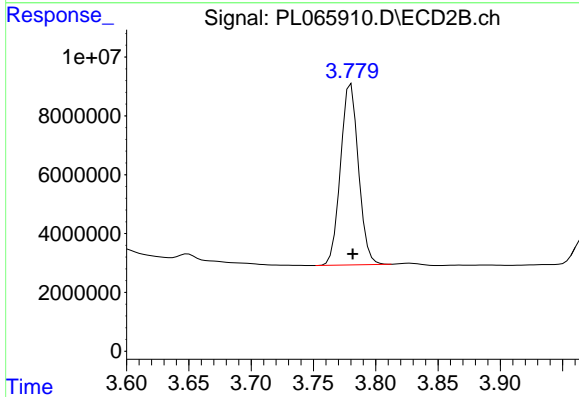




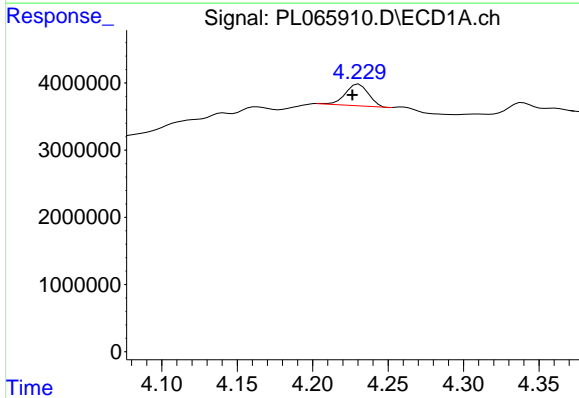
#1 Tetrachloro-m-xylene  
 R.T.: 3.276 min  
 Delta R.T.: -0.004 min  
 Response: 58922179  
 Conc: 22.62 ng/ml

Instrument :  
 ECD\_L  
 ClientSampled :  
 TP-3

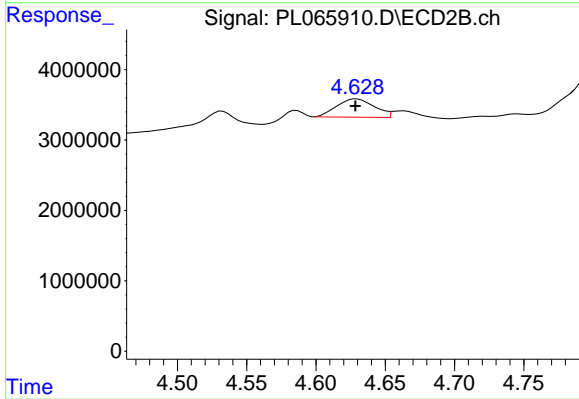
Manual Integrations  
 APPROVED  
 Ankita  
 4/7/2021 4:50:29 PM



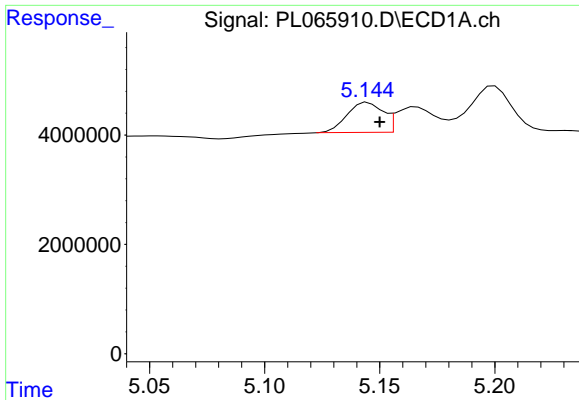
#1 Tetrachloro-m-xylene  
 R.T.: 3.780 min  
 Delta R.T.: -0.001 min  
 Response: 61930866  
 Conc: 22.56 ng/ml



#6 beta-BHC  
 R.T.: 4.231 min  
 Delta R.T.: 0.004 min  
 Response: 3461928  
 Conc: 2.17 ng/ml



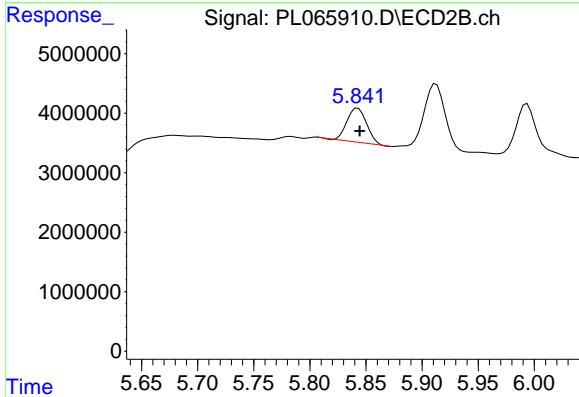
#6 beta-BHC  
 R.T.: 4.628 min  
 Delta R.T.: 0.000 min  
 Response: 5099073  
 Conc: 2.93 ng/ml m



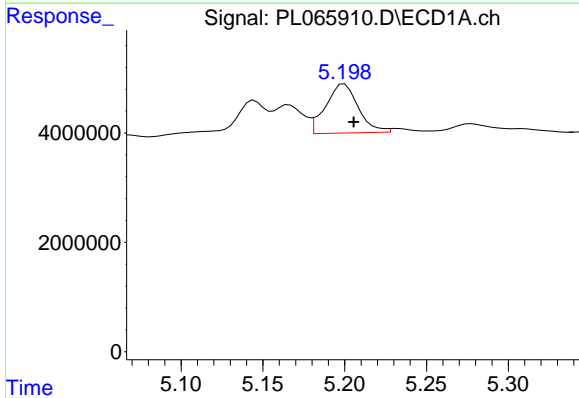
#10 gamma-Chlordane  
 R.T.: 5.144 min  
 Delta R.T.: -0.006 min  
 Response: 5840867  
 Conc: 1.86 ng/ml m

**Instrument :**  
 ECD\_L  
**ClientSampled :**  
 TP-3

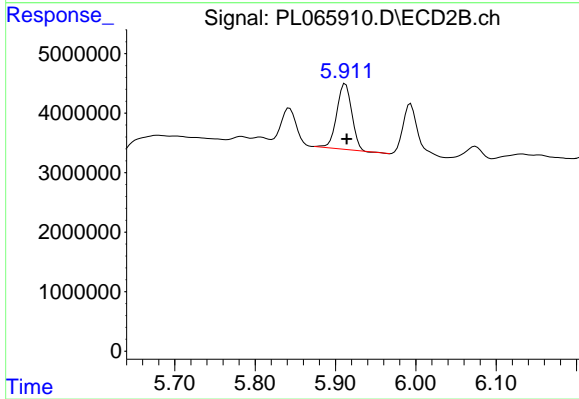
**Manual Integrations**  
**APPROVED**  
 Ankita  
 4/7/2021 4:50:29 PM



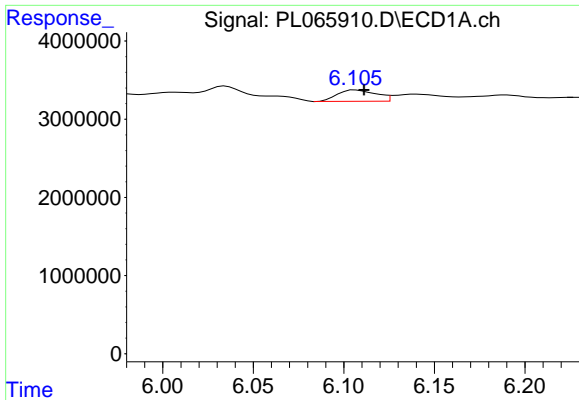
#10 gamma-Chlordane  
 R.T.: 5.843 min  
 Delta R.T.: -0.002 min  
 Response: 6997452  
 Conc: 2.33 ng/ml



#11 alpha-Chlordane  
 R.T.: 5.200 min  
 Delta R.T.: -0.006 min  
 Response: 12445437  
 Conc: 4.00 ng/ml



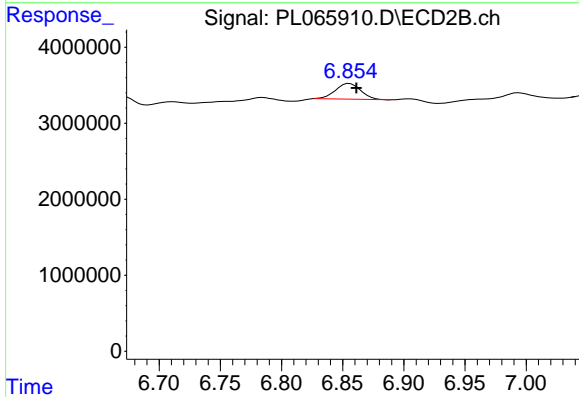
#11 alpha-Chlordane  
 R.T.: 5.912 min  
 Delta R.T.: -0.002 min  
 Response: 14412487  
 Conc: 4.87 ng/ml



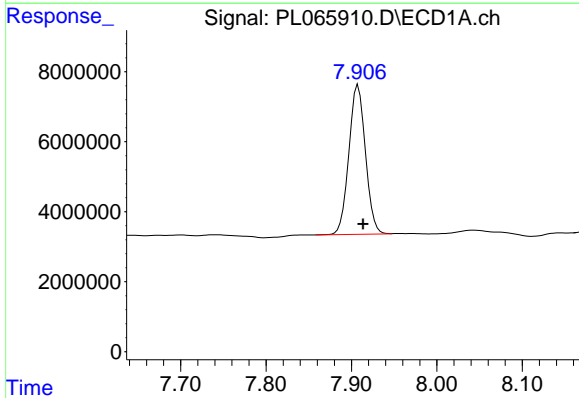
#17 4,4'-DDT  
 R.T.: 6.105 min  
 Delta R.T.: -0.006 min  
 Response: 2165962  
 Conc: 1.03 ng/ml m

Instrument :  
 ECD\_L  
 ClientSampled :  
 TP-3

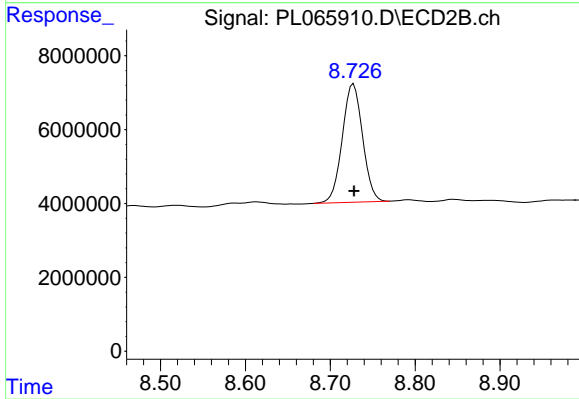
Manual Integrations  
 APPROVED  
 Ankita  
 4/7/2021 4:50:29 PM



#17 4,4'-DDT  
 R.T.: 6.856 min  
 Delta R.T.: -0.006 min  
 Response: 2952442  
 Conc: 1.32 ng/ml



#28 Decachlorobiphenyl  
 R.T.: 7.906 min  
 Delta R.T.: -0.007 min  
 Response: 57601037  
 Conc: 24.87 ng/ml m



#28 Decachlorobiphenyl  
 R.T.: 8.727 min  
 Delta R.T.: 0.000 min  
 Response: 53259333  
 Conc: 23.62 ng/ml