

Data Path : Z:\pestpcbsrv\HPCHEM1\ECD\_L\Data\PL040621\  
 Data File : PL065914.D  
 Signal(s) : Signal #1: ECD1A.ch Signal #2: ECD2B.ch  
 Acq On : 06 Apr 2021 15:48  
 Operator : AR\AJ  
 Sample : M1934-05  
 Misc :  
 ALS Vial : 23 Sample Multiplier: 1

**Instrument :**  
 ECD\_L  
**ClientSampleID :**  
 TP-1

**Manual Integrations**  
**APPROVED**  
 Ankita  
 4/7/2021 4:50:38 PM

Integration File signal 1: autoint1.e  
 Integration File signal 2: autoint2.e  
 Quant Time: Apr 07 04:34:29 2021  
 Quant Method : Z:\pestpcbsrv\HPCHEM1\ECD\_L\methods\PL033121.M  
 Quant Title : GC Extractables  
 QLast Update : Wed Mar 31 15:57:28 2021  
 Response via : Initial Calibration  
 Integrator: ChemStation

Volume Inj. : 1 µl  
 Signal #1 Phase : ZB-MR2 Signal #2 Phase: ZB-MR1  
 Signal #1 Info : 30M x 0.32mm x0.2 Signal #2 Info : 30M x 0.32mm x0.5µm

Compound	RT#1	RT#2	Resp#1	Resp#2	ng/ml	ng/ml
-----						
System Monitoring Compounds						
1) SA Tetrachlo...	3.275	3.780	31410955	33591385	12.058	12.237
28) SA Decachlor...	7.906	8.728	39878586	36238960	17.219m	16.074
Target Compounds						
6) B beta-BHC	4.228	4.629	4882023	4721785	3.063m	2.711m
-----						

(f)=RT Delta > 1/2 Window (#)=Amounts differ by > 25% (m)=manual int.

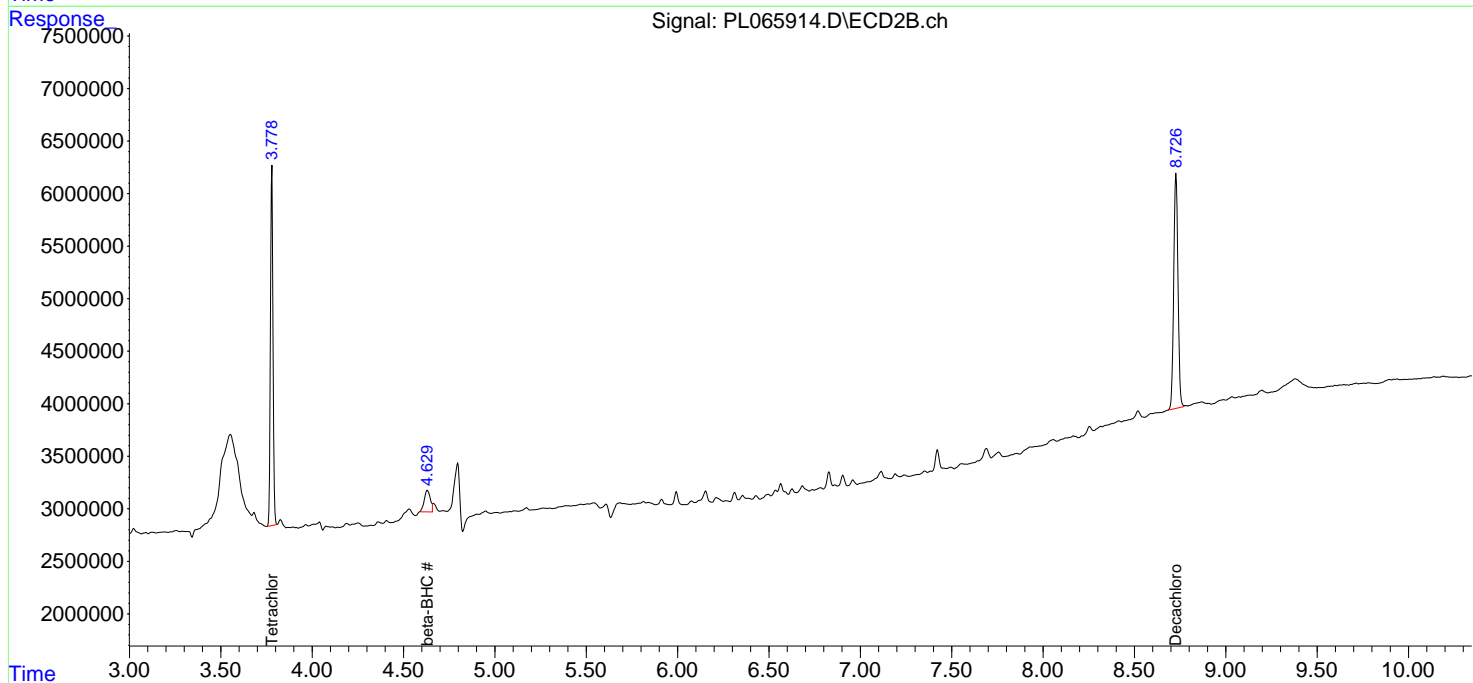
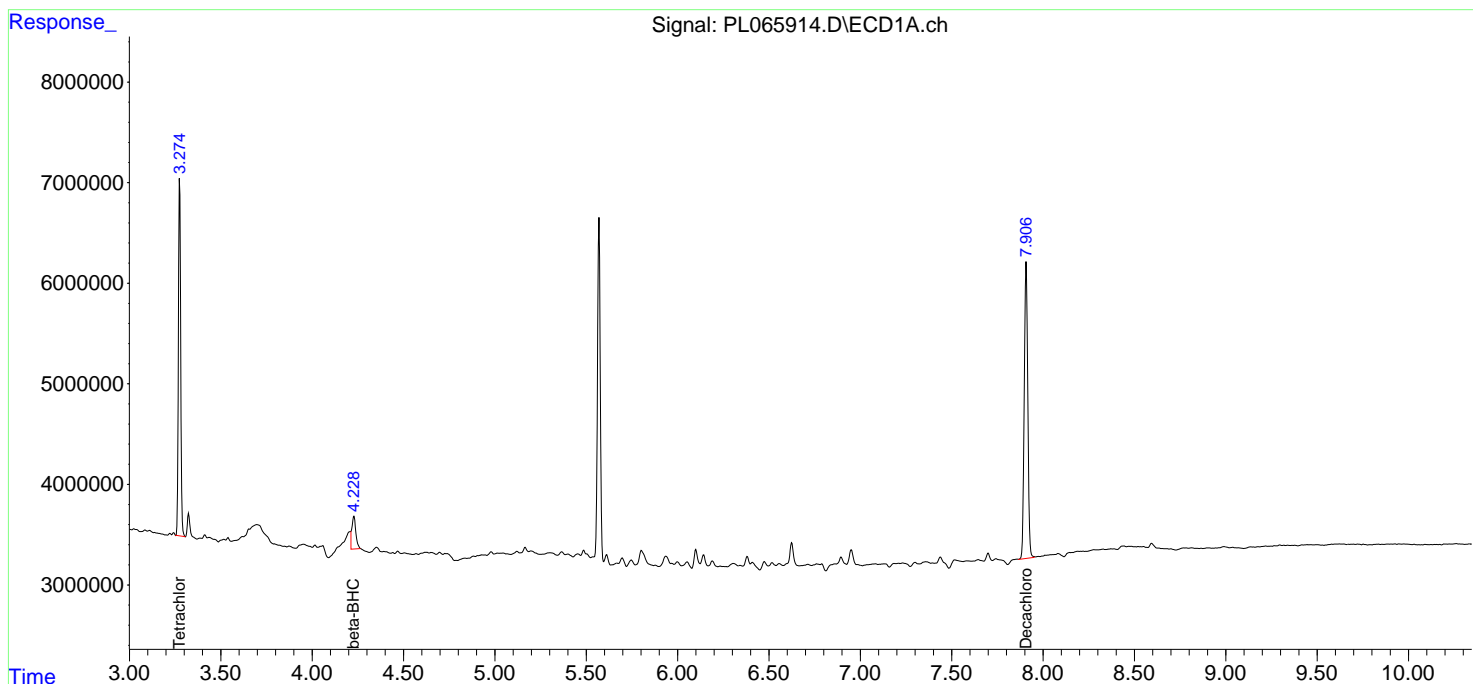
Data Path : Z:\pestpcbsrv\HPCHEM1\ECD\_L\Data\PL040621\  
 Data File : PL065914.D  
 Signal(s) : Signal #1: ECD1A.ch Signal #2: ECD2B.ch  
 Acq On : 06 Apr 2021 15:48  
 Operator : AR\AJ  
 Sample : M1934-05  
 Misc :  
 ALS Vial : 23 Sample Multiplier: 1

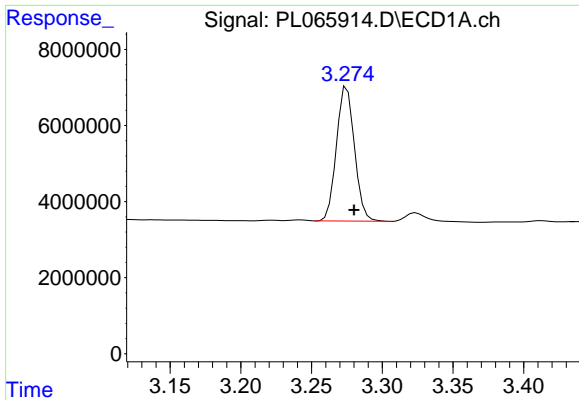
Instrument :  
 ECD\_L  
 ClientSampled :  
 TP-1

Manual Integrations  
**APPROVED**  
 Ankita  
 4/7/2021 4:50:38 PM

Integration File signal 1: autoint1.e  
 Integration File signal 2: autoint2.e  
 Quant Time: Apr 07 04:34:29 2021  
 Quant Method : Z:\pestpcbsrv\HPCHEM1\ECD\_L\methods\PL033121.M  
 Quant Title : GC Extractables  
 QLast Update : Wed Mar 31 15:57:28 2021  
 Response via : Initial Calibration  
 Integrator: ChemStation

Volume Inj. : 1 µl  
 Signal #1 Phase : ZB-MR2 Signal #2 Phase: ZB-MR1  
 Signal #1 Info : 30M x 0.32mm x0.2 Signal #2 Info : 30M x 0.32mm x0.5µm

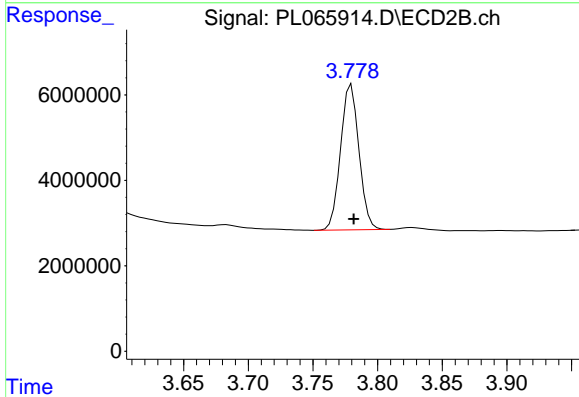




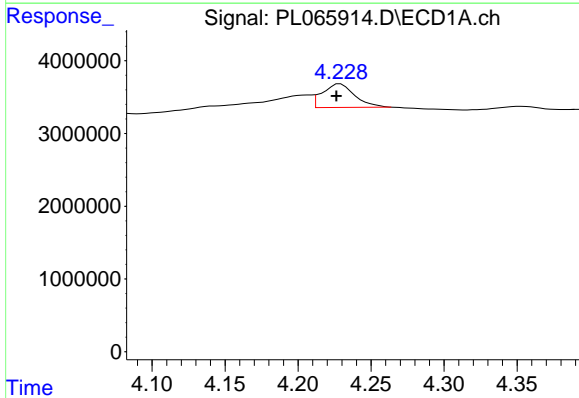
#1 Tetrachloro-m-xylene  
 R.T.: 3.275 min  
 Delta R.T.: -0.005 min  
 Response: 31410955  
 Conc: 12.06 ng/ml

Instrument :  
 ECD\_L  
 ClientSampled :  
 TP-1

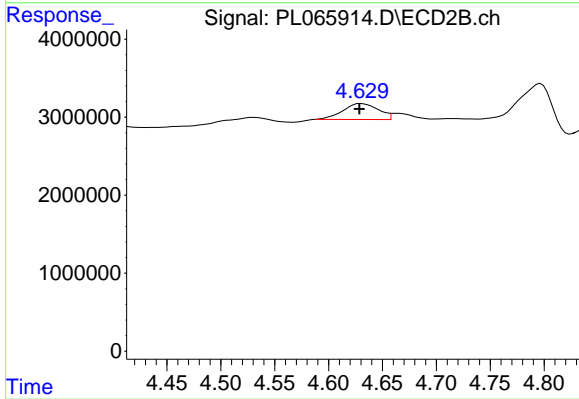
Manual Integrations  
 APPROVED  
 Ankita  
 4/7/2021 4:50:38 PM



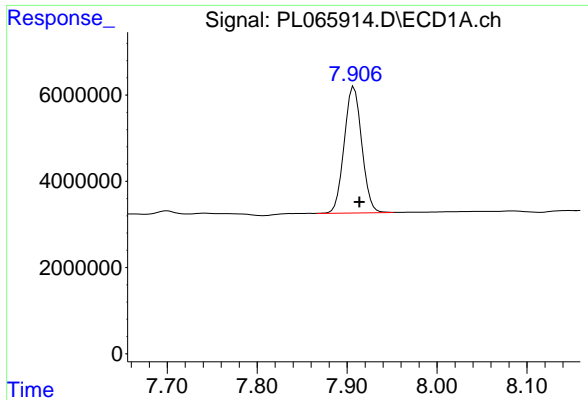
#1 Tetrachloro-m-xylene  
 R.T.: 3.780 min  
 Delta R.T.: -0.002 min  
 Response: 33591385  
 Conc: 12.24 ng/ml



#6 beta-BHC  
 R.T.: 4.228 min  
 Delta R.T.: 0.001 min  
 Response: 4882023  
 Conc: 3.06 ng/ml m



#6 beta-BHC  
 R.T.: 4.629 min  
 Delta R.T.: 0.000 min  
 Response: 4721785  
 Conc: 2.71 ng/ml m



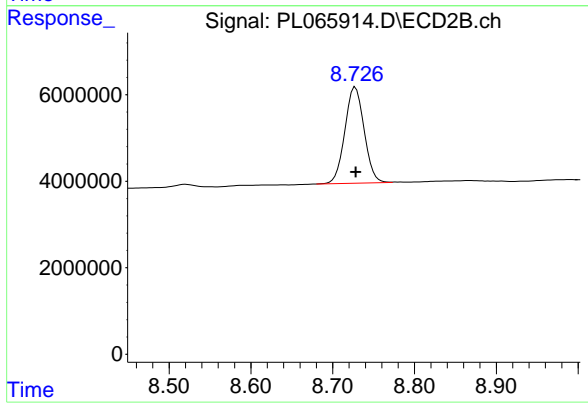
#28 Decachlorobiphenyl

R.T.: 7.906 min  
Delta R.T.: -0.007 min  
Response: 39878586  
Conc: 17.22 ng/ml m

Instrument :  
ECD\_L  
ClientSampleId :  
TP-1

Manual Integrations  
APPROVED

Ankita  
4/7/2021 4:50:38 PM



#28 Decachlorobiphenyl

R.T.: 8.728 min  
Delta R.T.: 0.000 min  
Response: 36238960  
Conc: 16.07 ng/ml