

Data Path : Z:\pestpcbsrv\HPCHEM1\ECD\_L\Data\PL040621\  
 Data File : PL065919.D  
 Signal(s) : Signal #1: ECD1A.ch Signal #2: ECD2B.ch  
 Acq On : 06 Apr 2021 16:59  
 Operator : AR\AJ  
 Sample : M1949-03  
 Misc :  
 ALS Vial : 28 Sample Multiplier: 1

**Instrument :**  
 ECD\_L  
**ClientSampleID :**  
 MA-1

**Manual Integrations**  
**APPROVED**  
 Ankita  
 4/7/2021 4:50:47 PM

Integration File signal 1: autoint1.e  
 Integration File signal 2: autoint2.e  
 Quant Time: Apr 07 04:35:37 2021  
 Quant Method : Z:\pestpcbsrv\HPCHEM1\ECD\_L\methods\PL033121.M  
 Quant Title : GC Extractables  
 QLast Update : Wed Mar 31 15:57:28 2021  
 Response via : Initial Calibration  
 Integrator: ChemStation

Volume Inj. : 1 µl  
 Signal #1 Phase : ZB-MR2 Signal #2 Phase: ZB-MR1  
 Signal #1 Info : 30M x 0.32mm x0.2 Signal #2 Info : 30M x 0.32mm x0.5µm

Compound	RT#1	RT#2	Resp#1	Resp#2	ng/ml	ng/ml
-----						
System Monitoring Compounds						
1) SA Tetrachlo...	3.276	3.780	53406134	56568061	20.501	20.608
28) SA Decachlor...	7.906	8.727	48894679	45010002	21.111m	19.964
Target Compounds						
6) B beta-BHC	4.227	4.627	3537026	4123032	2.219m	2.367m
-----						

(f)=RT Delta > 1/2 Window (#)=Amounts differ by > 25% (m)=manual int.

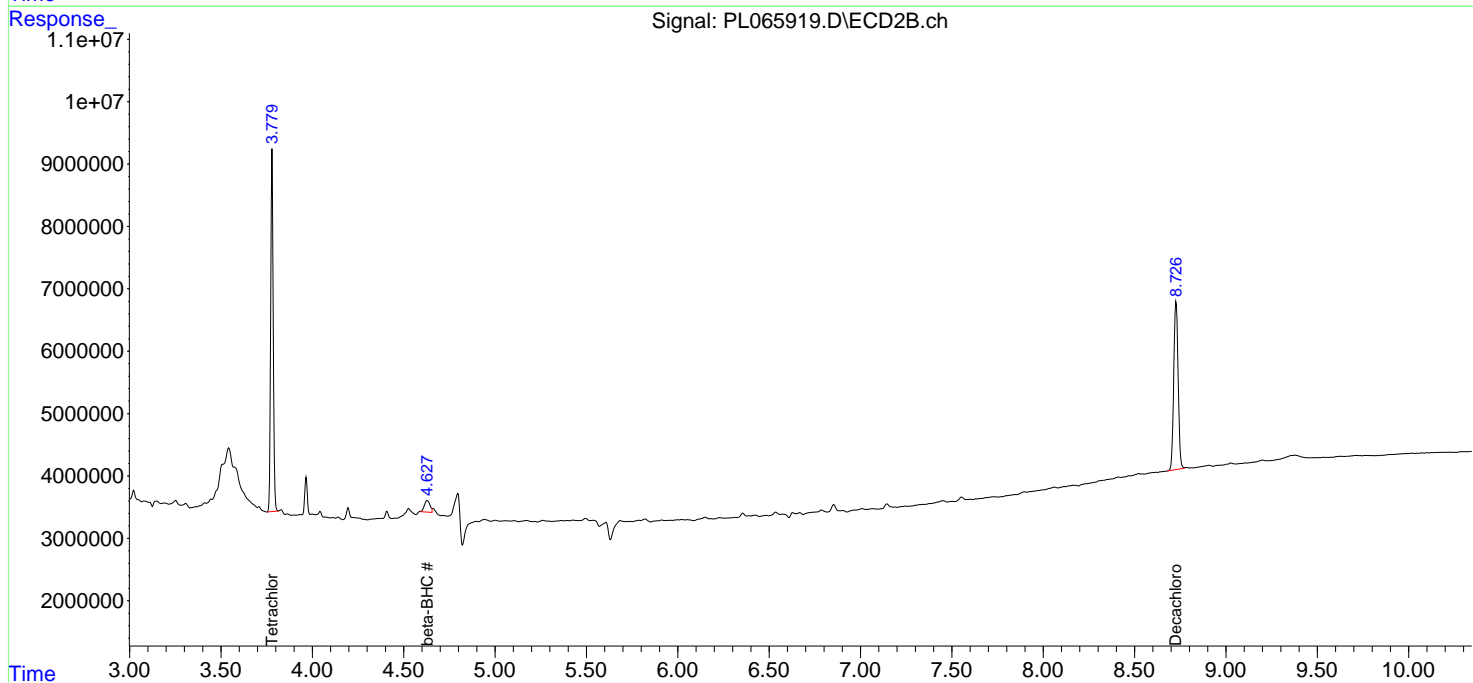
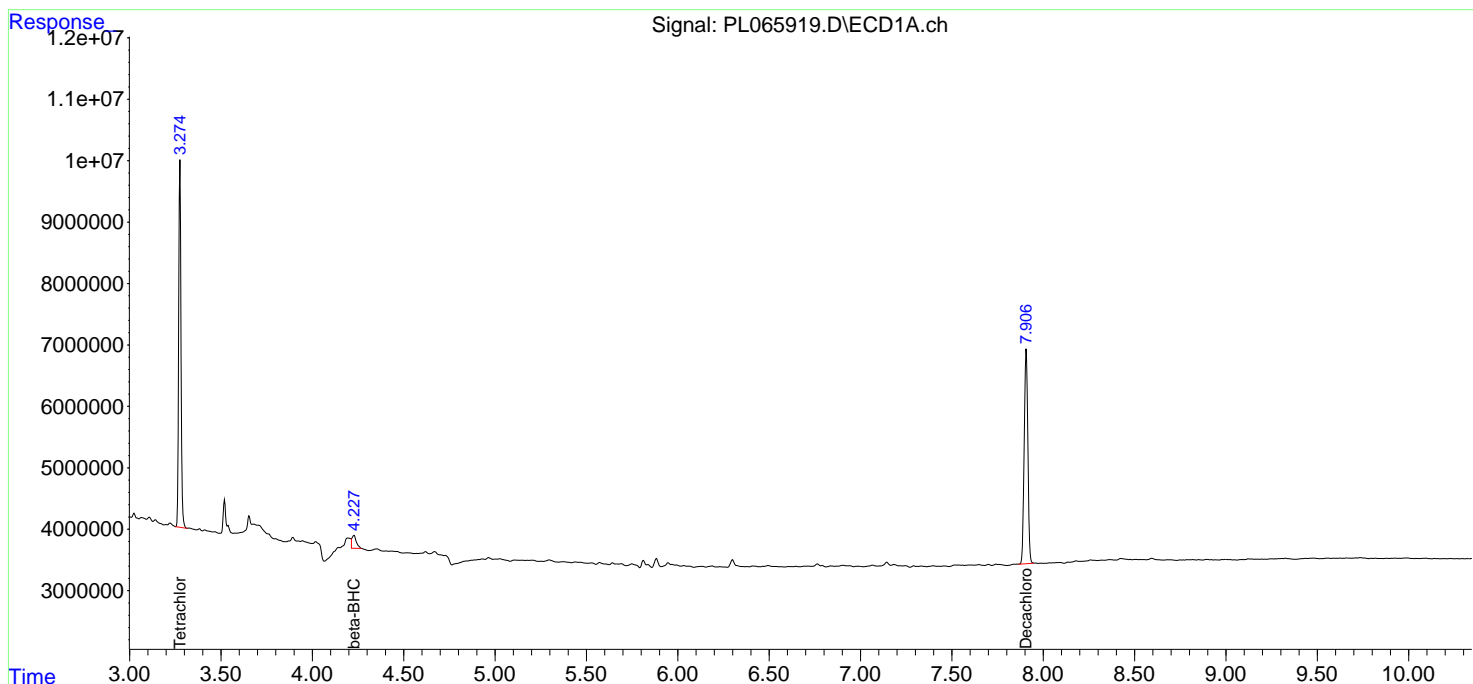
Data Path : Z:\pestpcbsrv\HPCHEM1\ECD\_L\Data\PL040621\  
 Data File : PL065919.D  
 Signal(s) : Signal #1: ECD1A.ch Signal #2: ECD2B.ch  
 Acq On : 06 Apr 2021 16:59  
 Operator : AR\AJ  
 Sample : M1949-03  
 Misc :  
 ALS Vial : 28 Sample Multiplier: 1

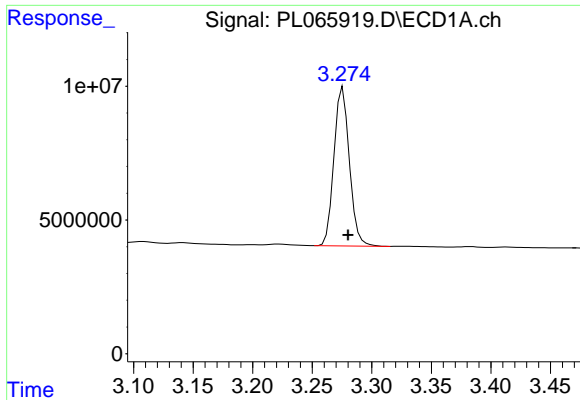
Instrument :  
 ECD\_L  
 ClientSampled :  
 MA-1

Manual Integrations  
**APPROVED**  
 Ankita  
 4/7/2021 4:50:47 PM

Integration File signal 1: autoint1.e  
 Integration File signal 2: autoint2.e  
 Quant Time: Apr 07 04:35:37 2021  
 Quant Method : Z:\pestpcbsrv\HPCHEM1\ECD\_L\methods\PL033121.M  
 Quant Title : GC Extractables  
 QLast Update : Wed Mar 31 15:57:28 2021  
 Response via : Initial Calibration  
 Integrator: ChemStation

Volume Inj. : 1 µl  
 Signal #1 Phase : ZB-MR2 Signal #2 Phase: ZB-MR1  
 Signal #1 Info : 30M x 0.32mm x0.2 Signal #2 Info : 30M x 0.32mm x0.5µm





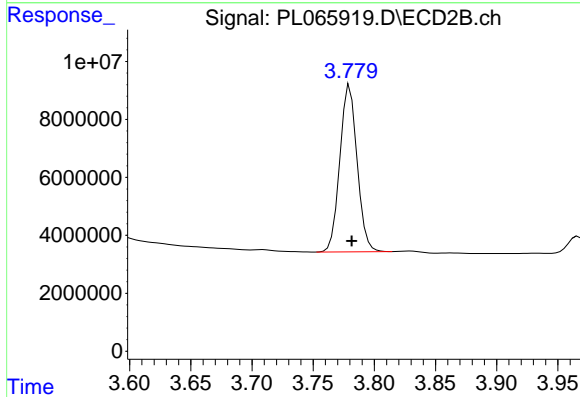
#1 Tetrachloro-m-xylene

R.T.: 3.276 min  
 Delta R.T.: -0.004 min  
 Response: 53406134  
 Conc: 20.50 ng/ml

Instrument :  
 ECD\_L  
 ClientSampled :  
 MA-1

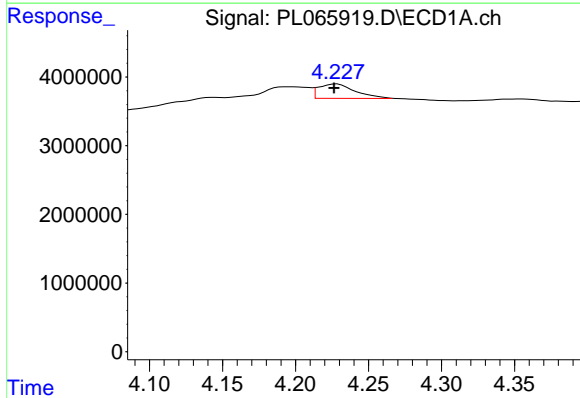
Manual Integrations  
 APPROVED

Ankita  
 4/7/2021 4:50:47 PM



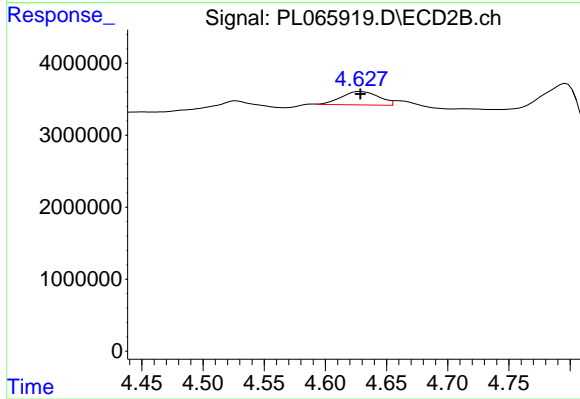
#1 Tetrachloro-m-xylene

R.T.: 3.780 min  
 Delta R.T.: -0.001 min  
 Response: 56568061  
 Conc: 20.61 ng/ml



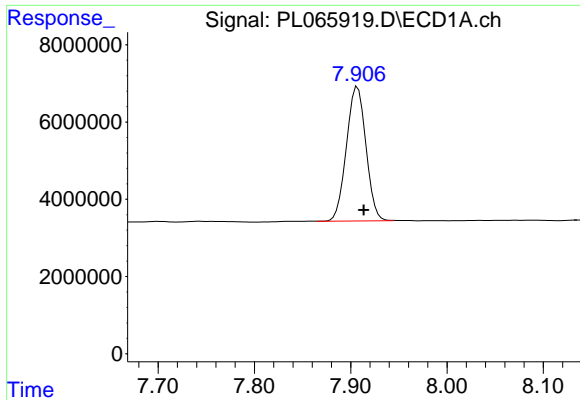
#6 beta-BHC

R.T.: 4.227 min  
 Delta R.T.: 0.000 min  
 Response: 3537026  
 Conc: 2.22 ng/ml m



#6 beta-BHC

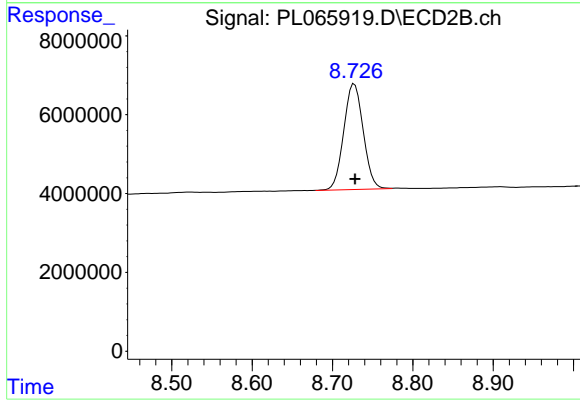
R.T.: 4.627 min  
 Delta R.T.: -0.001 min  
 Response: 4123032  
 Conc: 2.37 ng/ml m



#28 Decachlorobiphenyl  
R.T.: 7.906 min  
Delta R.T.: -0.008 min  
Response: 48894679  
Conc: 21.11 ng/ml m

Instrument :  
ECD\_L  
ClientSampled :  
MA-1

Manual Integrations  
APPROVED  
Ankita  
4/7/2021 4:50:47 PM



#28 Decachlorobiphenyl  
R.T.: 8.727 min  
Delta R.T.: 0.000 min  
Response: 45010002  
Conc: 19.96 ng/ml