

Data Path : Z:\pestpcbsrv\HPCHEM1\ECD_L\Data\PL040621\
 Data File : PL065922.D
 Signal(s) : Signal #1: ECD1A.ch Signal #2: ECD2B.ch
 Acq On : 06 Apr 2021 17:42
 Operator : AR\AJ
 Sample : I.BLK
 Misc :
 ALS Vial : 2 Sample Multiplier: 1

Instrument :
 ECD_L
ClientSampled :
 I.BLK

Manual Integrations
APPROVED
 Ankita
 4/7/2021 4:51:10 PM

Integration File signal 1: autoint1.e
 Integration File signal 2: autoint2.e
 Quant Time: Apr 07 04:36:18 2021
 Quant Method : Z:\pestpcbsrv\HPCHEM1\ECD_L\methods\PL033121.M
 Quant Title : GC Extractables
 QLast Update : Wed Mar 31 15:57:28 2021
 Response via : Initial Calibration
 Integrator: ChemStation

Volume Inj. : 1 µl
 Signal #1 Phase : ZB-MR2 Signal #2 Phase: ZB-MR1
 Signal #1 Info : 30M x 0.32mm x0.2 Signal #2 Info : 30M x 0.32mm x0.5µm

Compound	RT#1	RT#2	Resp#1	Resp#2	ng/ml	ng/ml

System Monitoring Compounds						
1) SA Tetrachlo...	3.275	3.780	49397947	52497917	18.963	19.125
28) SA Decachlor...	7.906	8.727	50433423	45910545	21.776m	20.364

Target Compounds

(f)=RT Delta > 1/2 Window (#)=Amounts differ by > 25% (m)=manual int.

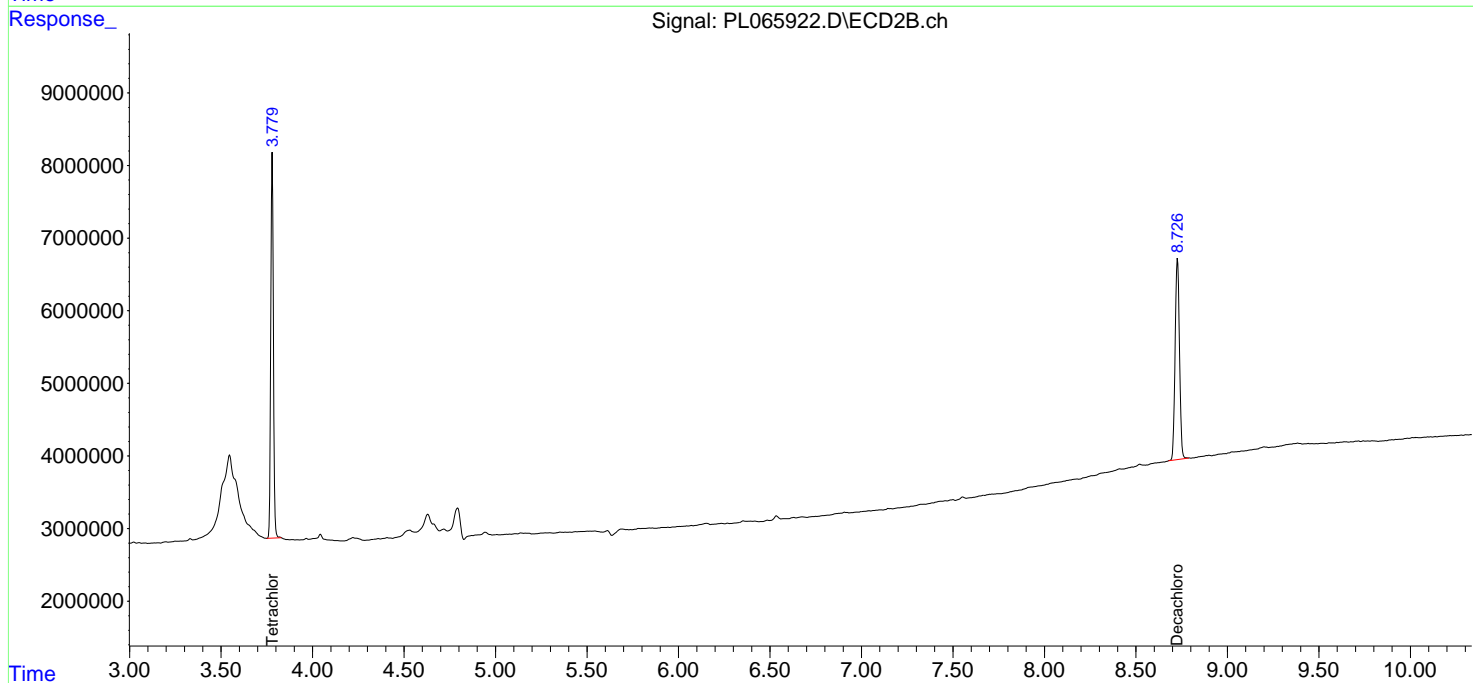
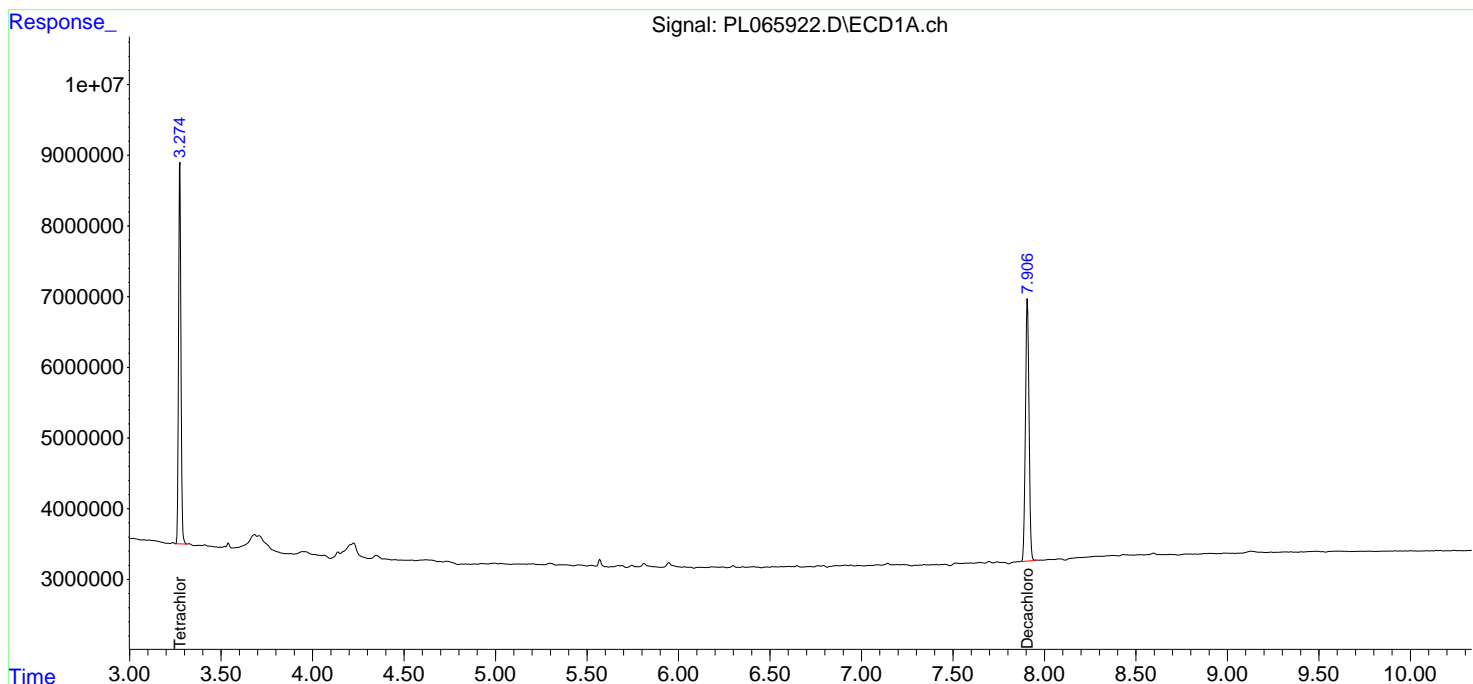
Data Path : Z:\pestpcbsrv\HPCHEM1\ECD_L\Data\PL040621\
 Data File : PL065922.D
 Signal(s) : Signal #1: ECD1A.ch Signal #2: ECD2B.ch
 Acq On : 06 Apr 2021 17:42
 Operator : AR\AJ
 Sample : I.BLK
 Misc :
 ALS Vial : 2 Sample Multiplier: 1

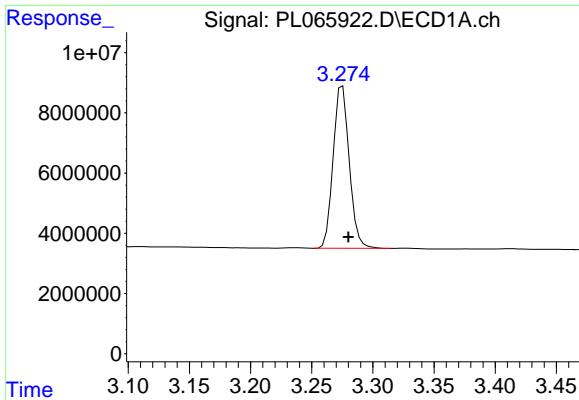
Instrument :
 ECD_L
ClientSampled :
 I.BLK

Manual Integrations
APPROVED
 Ankita
 4/7/2021 4:51:10 PM

Integration File signal 1: autoint1.e
 Integration File signal 2: autoint2.e
 Quant Time: Apr 07 04:36:18 2021
 Quant Method : Z:\pestpcbsrv\HPCHEM1\ECD_L\methods\PL033121.M
 Quant Title : GC Extractables
 QLast Update : Wed Mar 31 15:57:28 2021
 Response via : Initial Calibration
 Integrator: ChemStation

Volume Inj. : 1 µl
 Signal #1 Phase : ZB-MR2 Signal #2 Phase: ZB-MR1
 Signal #1 Info : 30M x 0.32mm x0.2 Signal #2 Info : 30M x 0.32mm x0.5µm

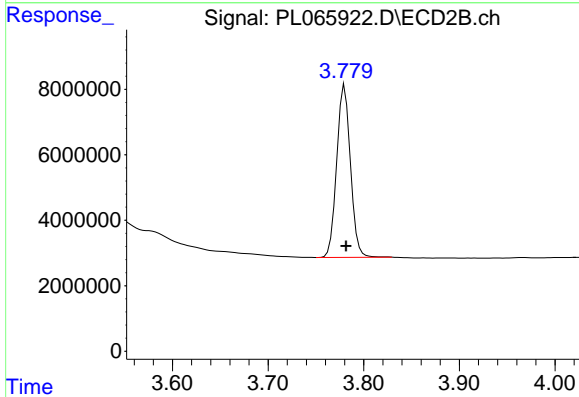




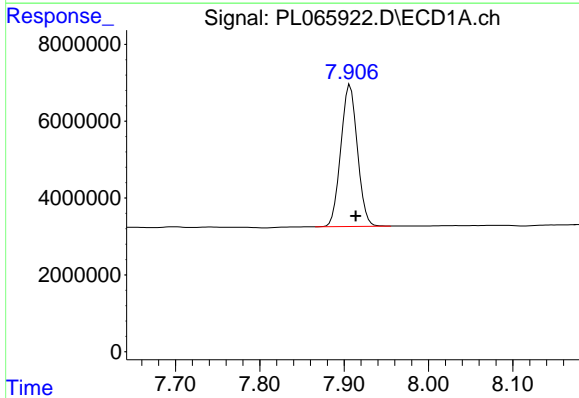
#1 Tetrachloro-m-xylene
 R.T.: 3.275 min
 Delta R.T.: -0.005 min
 Response: 49397947
 Conc: 18.96 ng/ml

Instrument :
 ECD_L
 ClientSampled :
 I.BLK

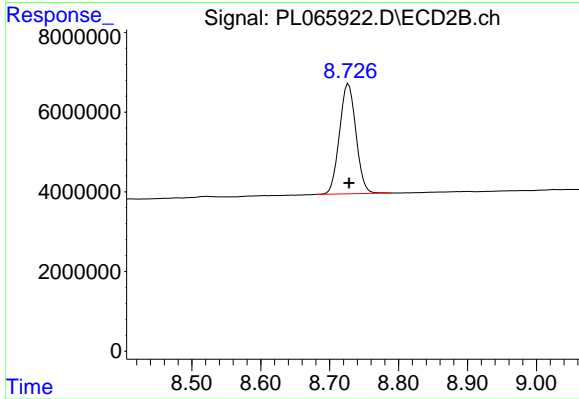
Manual Integrations
 APPROVED
 Ankita
 4/7/2021 4:51:10 PM



#1 Tetrachloro-m-xylene
 R.T.: 3.780 min
 Delta R.T.: -0.001 min
 Response: 52497917
 Conc: 19.13 ng/ml



#28 Decachlorobiphenyl
 R.T.: 7.906 min
 Delta R.T.: -0.008 min
 Response: 50433423
 Conc: 21.78 ng/ml m



#28 Decachlorobiphenyl
 R.T.: 8.727 min
 Delta R.T.: 0.000 min
 Response: 45910545
 Conc: 20.36 ng/ml