

Data Path : Z:\pestpcbsrv\HPCHEM1\ECD\_L\Data\PL040621\  
 Data File : PL065923.D  
 Signal(s) : Signal #1: ECD1A.ch Signal #2: ECD2B.ch  
 Acq On : 06 Apr 2021 17:56  
 Operator : AR\AJ  
 Sample : PSTDCCC050  
 Misc :  
 ALS Vial : 4 Sample Multiplier: 1

**Instrument :**  
 ECD\_L  
**ClientSampled :**  
 PSTDCCC050

**Manual Integrations**  
**APPROVED**  
 Ankita  
 4/7/2021 4:50:53 PM

Integration File signal 1: autoint1.e  
 Integration File signal 2: autoint2.e  
 Quant Time: Apr 07 04:36:30 2021  
 Quant Method : Z:\pestpcbsrv\HPCHEM1\ECD\_L\methods\PL033121.M  
 Quant Title : GC Extractables  
 QLast Update : Wed Mar 31 15:57:28 2021  
 Response via : Initial Calibration  
 Integrator: ChemStation

Volume Inj. : 1 µl  
 Signal #1 Phase : ZB-MR2 Signal #2 Phase: ZB-MR1  
 Signal #1 Info : 30M x 0.32mm x0.2 Signal #2 Info : 30M x 0.32mm x0.5µm

	Compound	RT#1	RT#2	Resp#1	Resp#2	ng/ml	ng/ml
-----							
System Monitoring Compounds							
1)	SA Tetrachlo...	3.276	3.780	133.0E6	137.2E6	51.066	49.974
28)	SA Decachlor...	7.908	8.728	126.5E6	118.8E6	54.618	52.685
Target Compounds							
2)	A alpha-BHC	3.698	4.166	212.2E6	205.4E6	51.887	50.561
3)	MA gamma-BHC...	3.970	4.445	193.4E6	187.9E6	52.259m	51.322
4)	MA Heptachlor	4.256	4.929	180.2E6	175.1E6	50.025	49.623
5)	MB Aldrin	4.491	5.226	176.9E6	169.0E6	51.825m	51.196
6)	B beta-BHC	4.223	4.628	82109953	87539077	51.515	50.258
7)	B delta-BHC	4.414	4.835	190.0E6	159.6E6	52.830	53.503
8)	B Heptachlo...	4.924	5.612	161.3E6	154.5E6	51.294	49.766
9)	A Endosulfan I	5.251	5.962	151.5E6	141.9E6	52.563	51.703
10)	B gamma-Chl...	5.144	5.843	163.6E6	154.5E6	51.977	51.493
11)	B alpha-Chl...	5.200	5.912	160.8E6	152.3E6	51.666	51.473
12)	B 4,4'-DDE	5.367	6.077	145.1E6	137.3E6	52.574	52.569
13)	MA Dieldrin	5.488	6.218	153.8E6	146.0E6	52.641	51.791
14)	MA Endrin	5.737	6.433	136.6E6	125.1E6	50.591	50.233
15)	B Endosulfa...	6.009	6.650	129.8E6	122.8E6	52.269	51.939
16)	A 4,4'-DDD	5.872	6.568	121.3E6	112.0E6	53.479	53.152
17)	MA 4,4'-DDT	6.104	6.861	105.1E6	104.8E6	49.887m	46.823
18)	B Endrin al...	6.175	6.775	99054149	96979722	52.351	51.110
19)	B Endosulfa...	6.386	6.996	134.8E6	123.5E6	52.239	50.907
20)	A Methoxychlor	6.651	7.327	61050547	57778018	48.631	45.619
21)	B Endrin ke...	6.864	7.463	143.7E6	132.0E6	52.398	51.345
22)	Mirex	7.036	7.897	108.4E6	97870999	51.748	50.143

(f)=RT Delta > 1/2 Window (#)=Amounts differ by > 25% (m)=manual int.

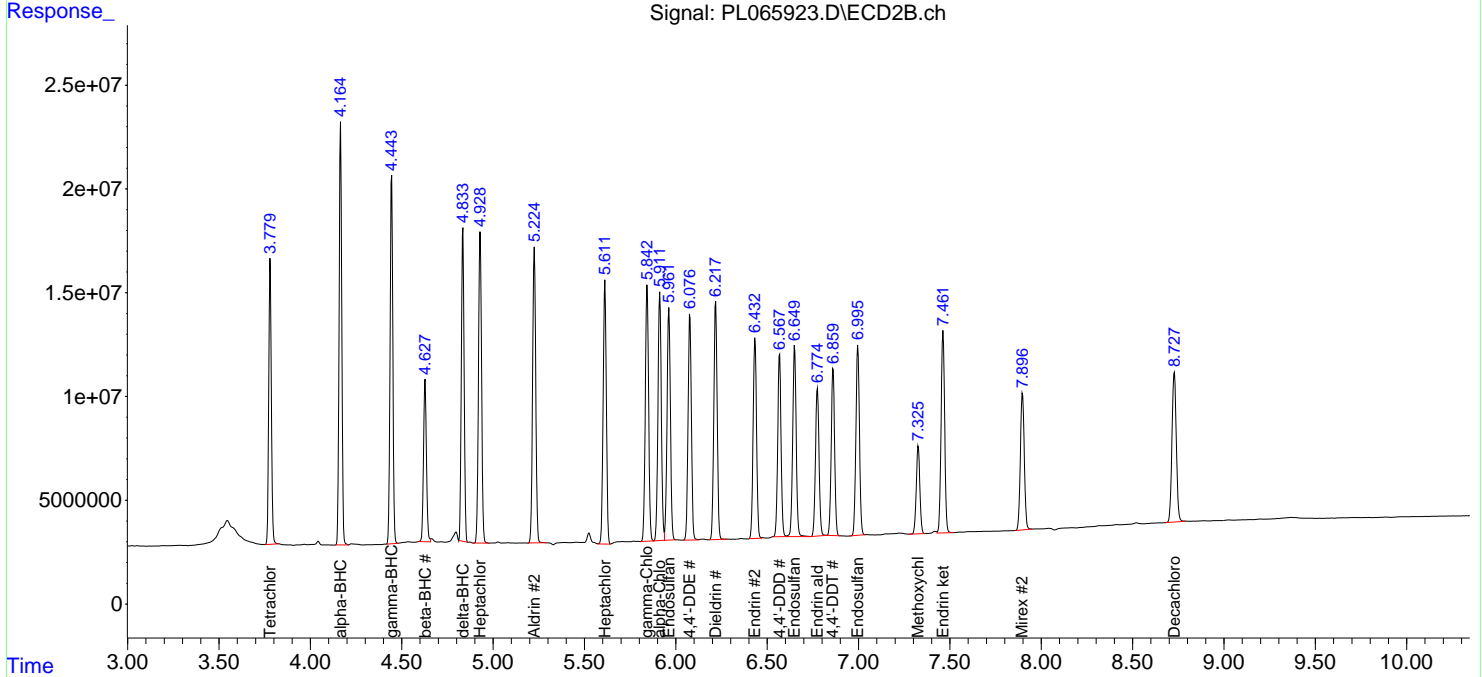
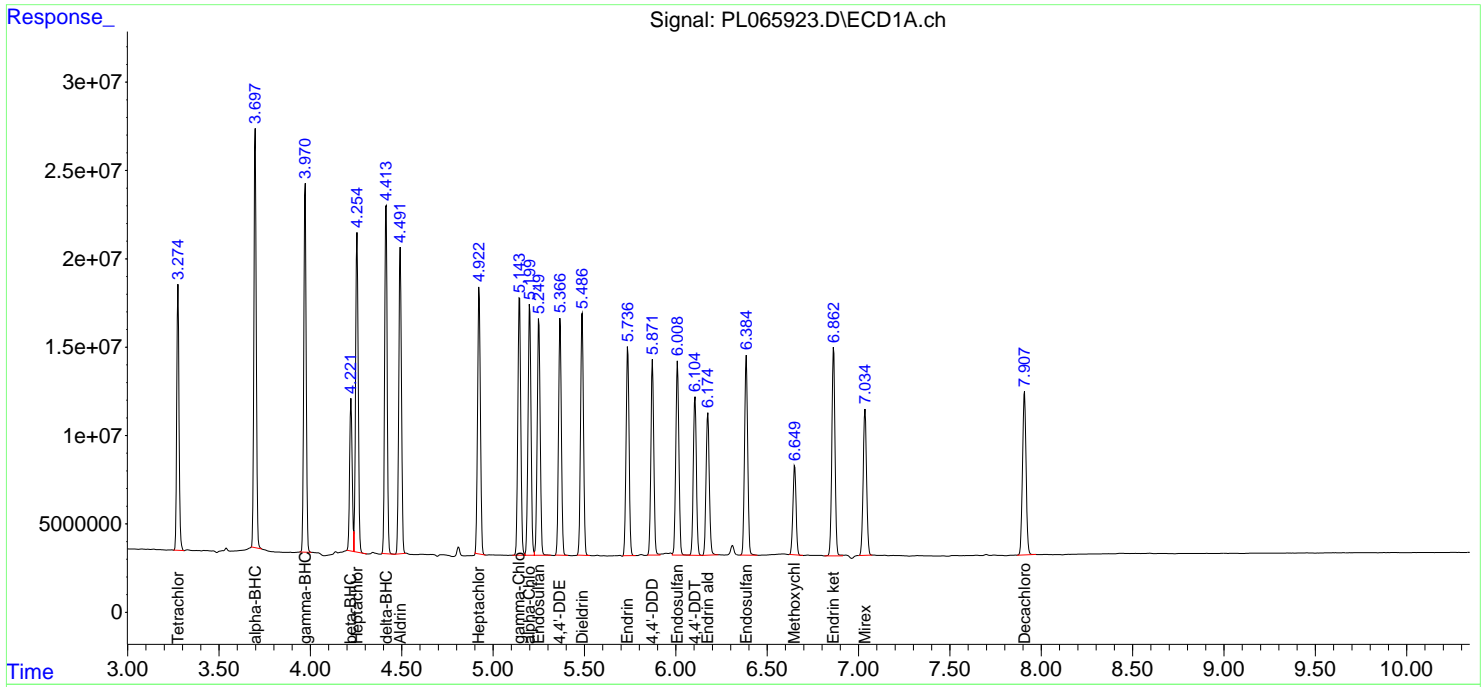
Data Path : Z:\pestpcbsrv\HPCHEM1\ECD\_L\Data\PL040621\  
 Data File : PL065923.D  
 Signal(s) : Signal #1: ECD1A.ch Signal #2: ECD2B.ch  
 Acq On : 06 Apr 2021 17:56  
 Operator : AR\AJ  
 Sample : PSTDCCC050  
 Misc :  
 ALS Vial : 4 Sample Multiplier: 1

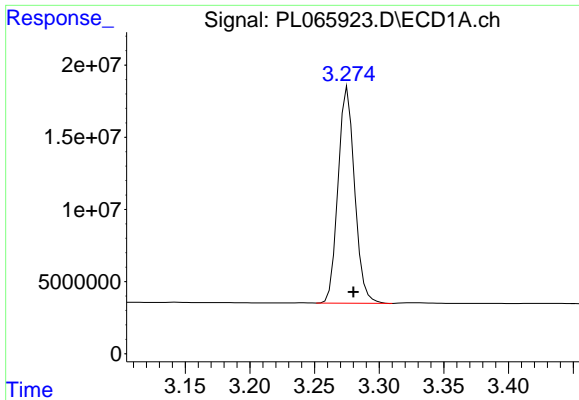
Instrument :  
 ECD\_L  
 Client Sampled :  
 PSTDCCC050

Manual Integrations  
**APPROVED**  
 Ankita  
 4/7/2021 4:50:53 PM

Integration File signal 1: autoint1.e  
 Integration File signal 2: autoint2.e  
 Quant Time: Apr 07 04:36:30 2021  
 Quant Method : Z:\pestpcbsrv\HPCHEM1\ECD\_L\methods\PL033121.M  
 Quant Title : GC Extractables  
 QLast Update : Wed Mar 31 15:57:28 2021  
 Response via : Initial Calibration  
 Integrator: ChemStation

Volume Inj. : 1 µl  
 Signal #1 Phase : ZB-MR2 Signal #2 Phase: ZB-MR1  
 Signal #1 Info : 30M x 0.32mm x0.2 Signal #2 Info : 30M x 0.32mm x0.5µm

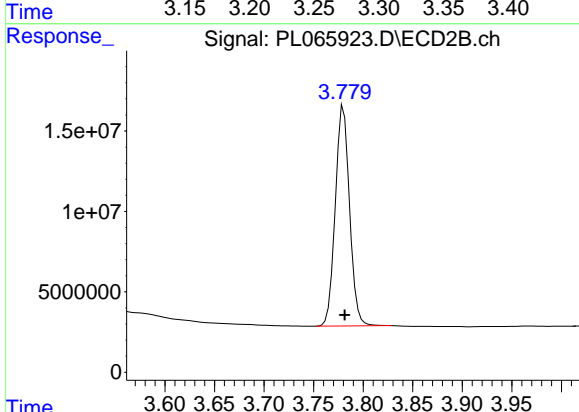




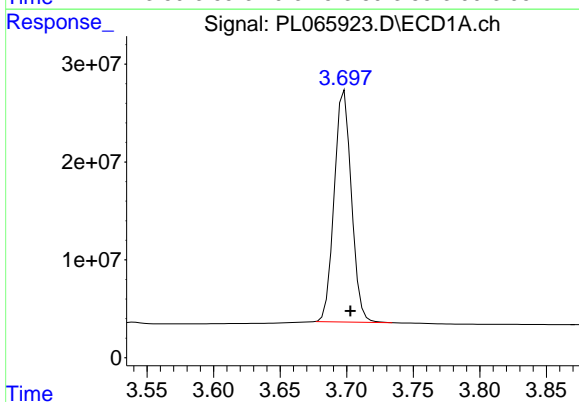
#1 Tetrachloro-m-xylene  
 R.T.: 3.276 min  
 Delta R.T.: -0.004 min  
 Response: 133028864  
 Conc: 51.07 ng/ml

**Instrument :**  
 ECD\_L  
**ClientSampleId :**  
 PSTDCCC050

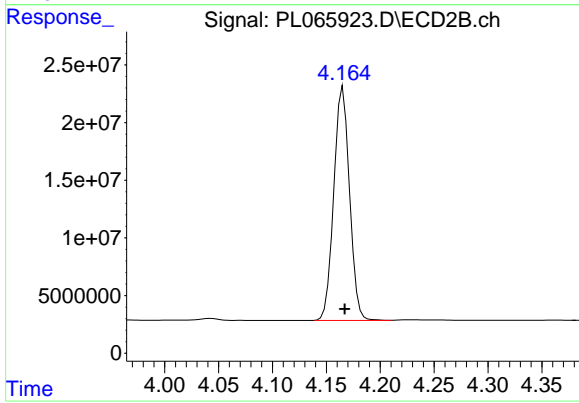
**Manual Integrations**  
**APPROVED**  
 Ankita  
 4/7/2021 4:50:53 PM



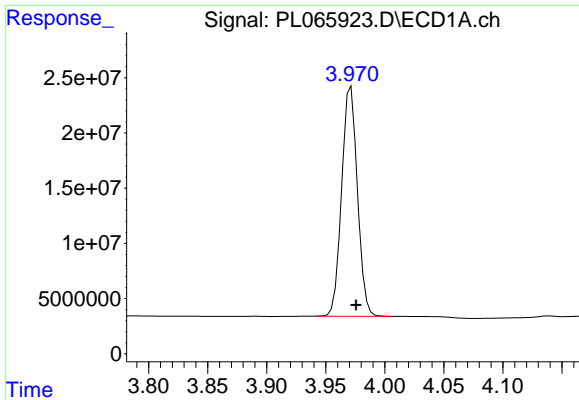
#1 Tetrachloro-m-xylene  
 R.T.: 3.780 min  
 Delta R.T.: -0.001 min  
 Response: 137175949  
 Conc: 49.97 ng/ml



#2 alpha-BHC  
 R.T.: 3.698 min  
 Delta R.T.: -0.005 min  
 Response: 212210356  
 Conc: 51.89 ng/ml



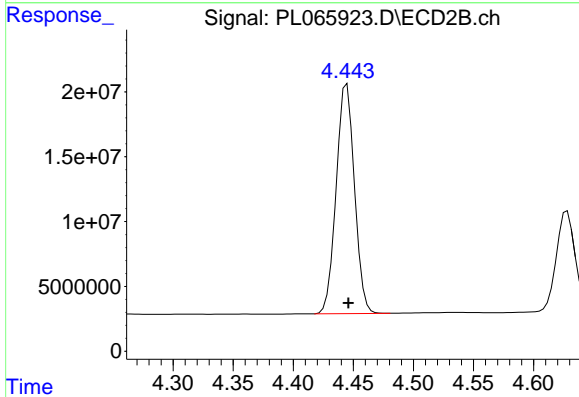
#2 alpha-BHC  
 R.T.: 4.166 min  
 Delta R.T.: -0.001 min  
 Response: 205431595  
 Conc: 50.56 ng/ml



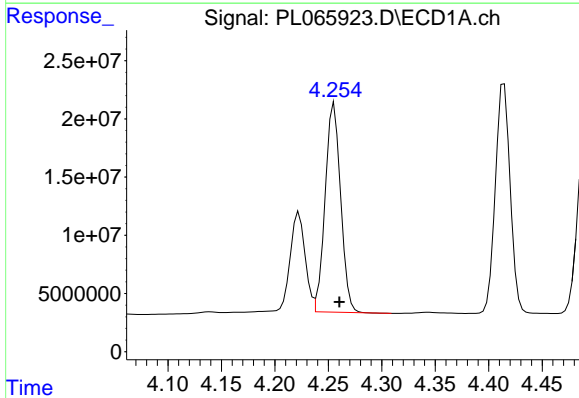
#3 gamma-BHC (Lindane)  
 R.T.: 3.970 min  
 Delta R.T.: -0.006 min  
 Response: 193444707  
 Conc: 52.26 ng/ml m

Instrument :  
 ECD\_L  
 ClientSampled :  
 PSTDCCC050

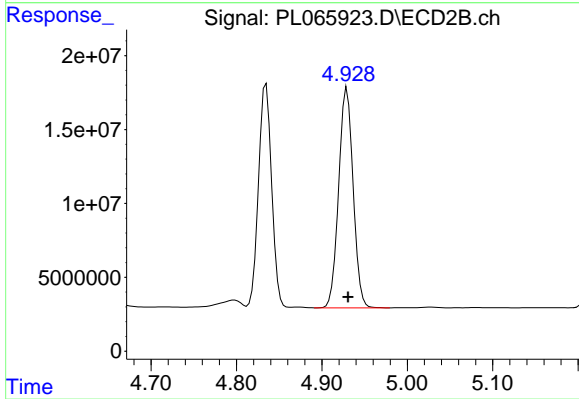
Manual Integrations  
 APPROVED  
 Ankita  
 4/7/2021 4:50:53 PM



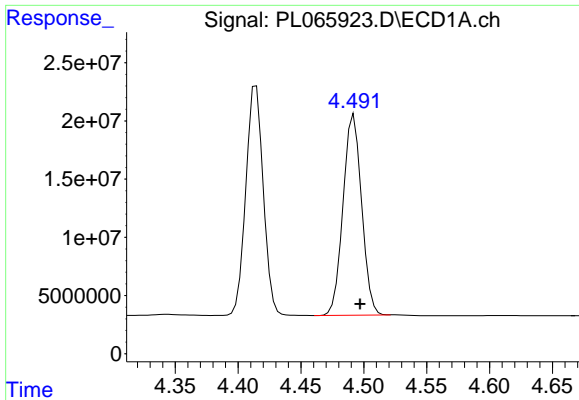
#3 gamma-BHC (Lindane)  
 R.T.: 4.445 min  
 Delta R.T.: -0.001 min  
 Response: 187899275  
 Conc: 51.32 ng/ml



#4 Heptachlor  
 R.T.: 4.256 min  
 Delta R.T.: -0.005 min  
 Response: 180207849  
 Conc: 50.02 ng/ml



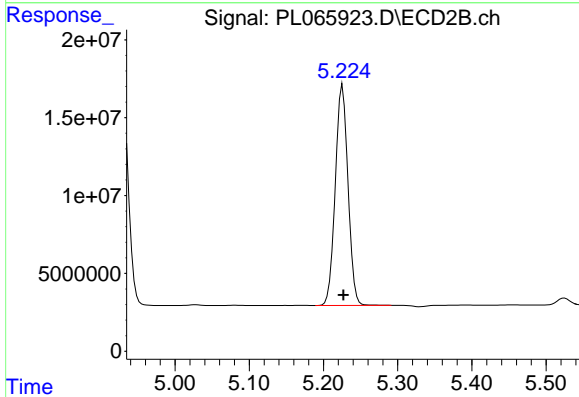
#4 Heptachlor  
 R.T.: 4.929 min  
 Delta R.T.: -0.001 min  
 Response: 175132876  
 Conc: 49.62 ng/ml



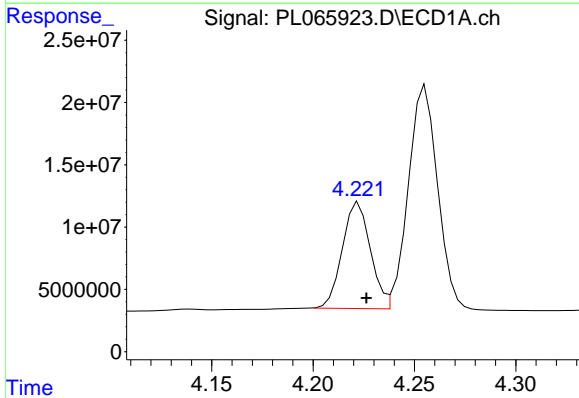
#5 Aldrin  
 R.T.: 4.491 min  
 Delta R.T.: -0.006 min  
 Response: 176940741  
 Conc: 51.83 ng/ml m

**Instrument :**  
 ECD\_L  
**ClientSampled :**  
 PSTDCCC050

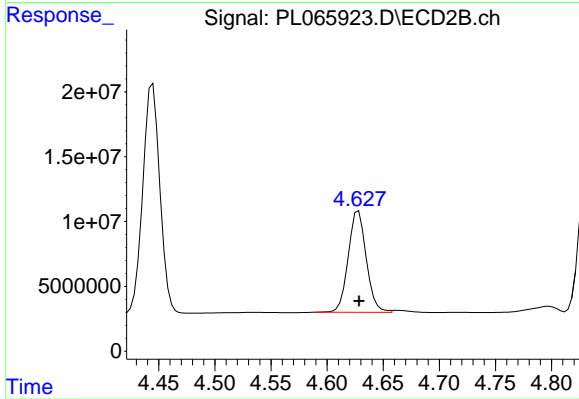
**Manual Integrations**  
**APPROVED**  
 Ankita  
 4/7/2021 4:50:53 PM



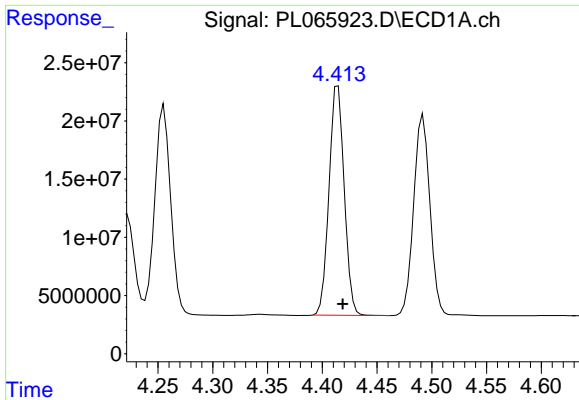
#5 Aldrin  
 R.T.: 5.226 min  
 Delta R.T.: -0.001 min  
 Response: 169033034  
 Conc: 51.20 ng/ml



#6 beta-BHC  
 R.T.: 4.223 min  
 Delta R.T.: -0.004 min  
 Response: 82109953  
 Conc: 51.52 ng/ml



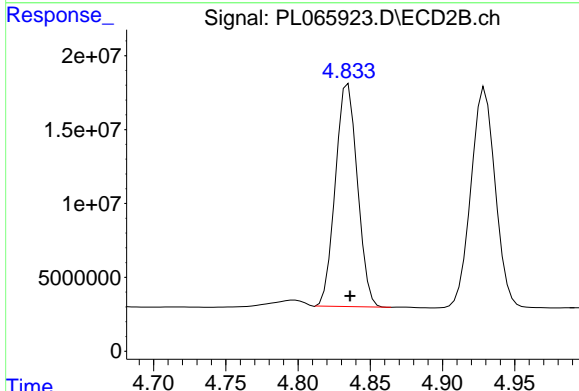
#6 beta-BHC  
 R.T.: 4.628 min  
 Delta R.T.: 0.000 min  
 Response: 87539077  
 Conc: 50.26 ng/ml



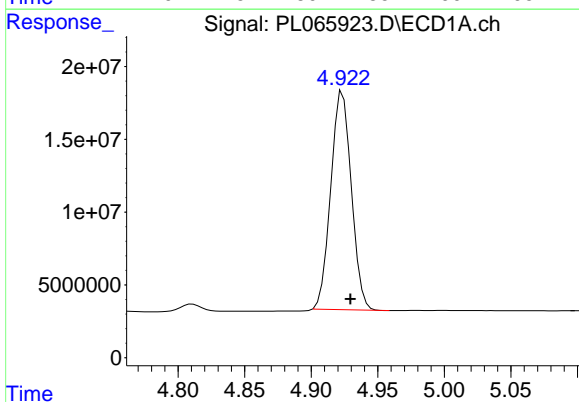
#7 delta-BHC  
R.T.: 4.414 min  
Delta R.T.: -0.004 min  
Response: 190045629  
Conc: 52.83 ng/ml

Instrument :  
ECD\_L  
ClientSampled :  
PSTDCCC050

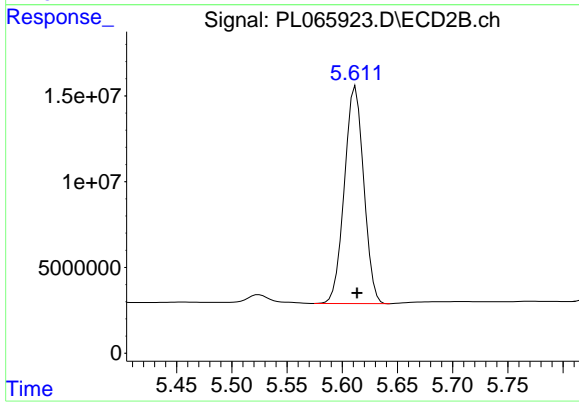
Manual Integrations  
APPROVED  
Ankita  
4/7/2021 4:50:53 PM



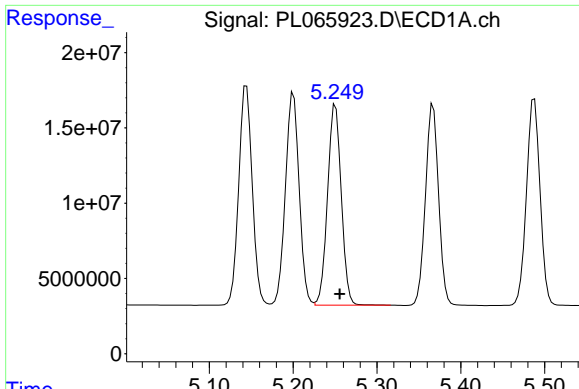
#7 delta-BHC  
R.T.: 4.835 min  
Delta R.T.: -0.001 min  
Response: 159575011  
Conc: 53.50 ng/ml



#8 Heptachlor epoxide  
R.T.: 4.924 min  
Delta R.T.: -0.006 min  
Response: 161296068  
Conc: 51.29 ng/ml



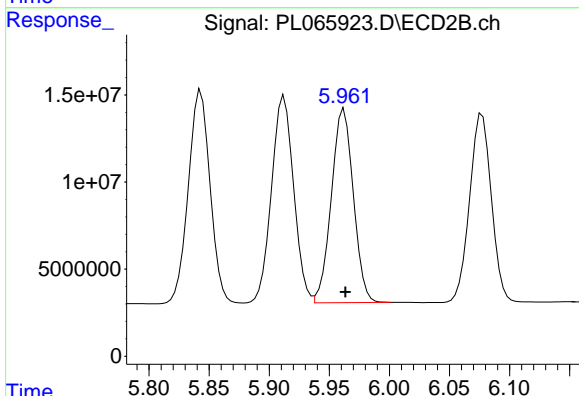
#8 Heptachlor epoxide  
R.T.: 5.612 min  
Delta R.T.: -0.002 min  
Response: 154541118  
Conc: 49.77 ng/ml



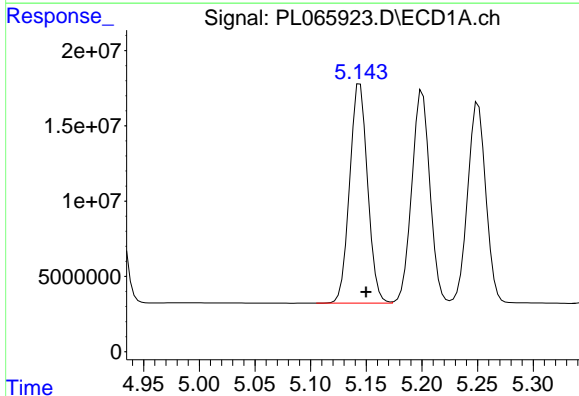
#9 Endosulfan I  
 R.T.: 5.251 min  
 Delta R.T.: -0.005 min  
 Response: 151469507  
 Conc: 52.56 ng/ml

**Instrument :**  
 ECD\_L  
**ClientSampleId :**  
 PSTDCCC050

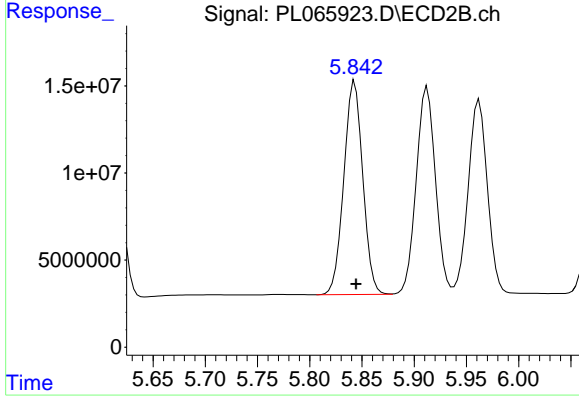
**Manual Integrations**  
**APPROVED**  
 Ankita  
 4/7/2021 4:50:53 PM



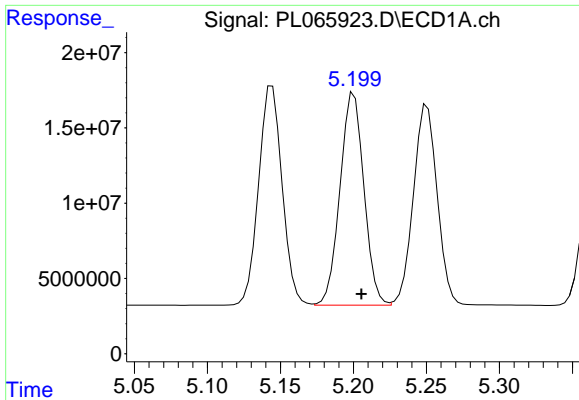
#9 Endosulfan I  
 R.T.: 5.962 min  
 Delta R.T.: -0.001 min  
 Response: 141940441  
 Conc: 51.70 ng/ml



#10 gamma-Chlordane  
 R.T.: 5.144 min  
 Delta R.T.: -0.006 min  
 Response: 163566526  
 Conc: 51.98 ng/ml



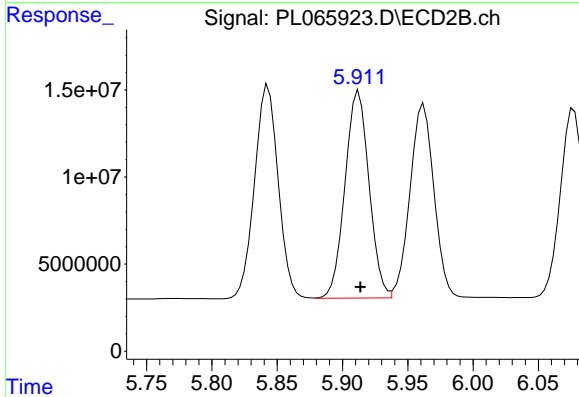
#10 gamma-Chlordane  
 R.T.: 5.843 min  
 Delta R.T.: -0.001 min  
 Response: 154494616  
 Conc: 51.49 ng/ml



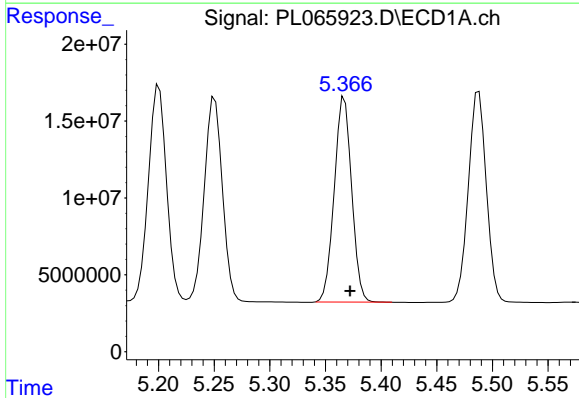
#11 alpha-Chlordane  
 R.T.: 5.200 min  
 Delta R.T.: -0.005 min  
 Response: 160756348  
 Conc: 51.67 ng/ml

Instrument :  
 ECD\_L  
 ClientSampleId :  
 PSTDCCC050

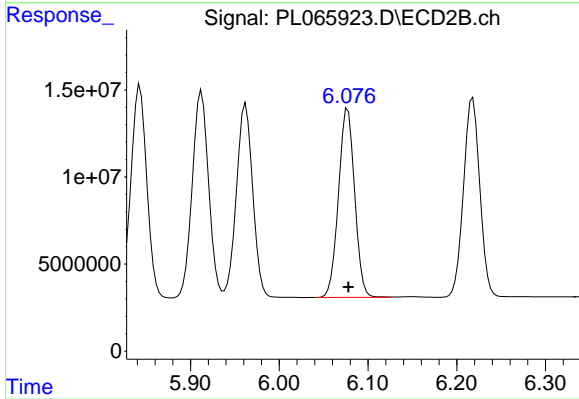
Manual Integrations  
 APPROVED  
 Ankita  
 4/7/2021 4:50:53 PM



#11 alpha-Chlordane  
 R.T.: 5.912 min  
 Delta R.T.: -0.001 min  
 Response: 152314396  
 Conc: 51.47 ng/ml

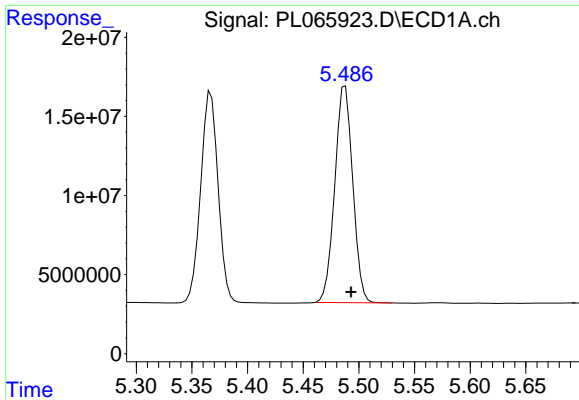


#12 4,4'-DDE  
 R.T.: 5.367 min  
 Delta R.T.: -0.005 min  
 Response: 145052707  
 Conc: 52.57 ng/ml



#12 4,4'-DDE  
 R.T.: 6.077 min  
 Delta R.T.: 0.000 min  
 Response: 137337465  
 Conc: 52.57 ng/ml

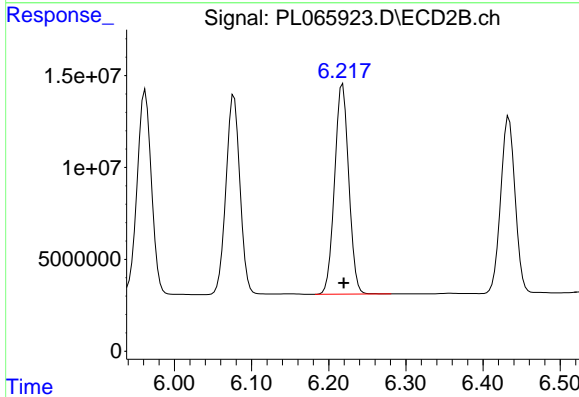




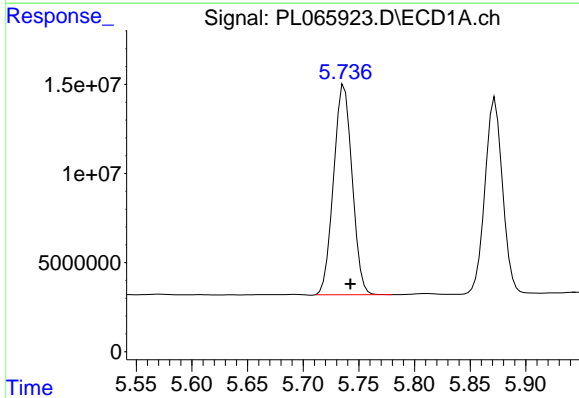
#13 Dieldrin  
 R.T.: 5.488 min  
 Delta R.T.: -0.005 min  
 Response: 153794390  
 Conc: 52.64 ng/ml

**Instrument :**  
 ECD\_L  
**ClientSampled :**  
 PSTDCCC050

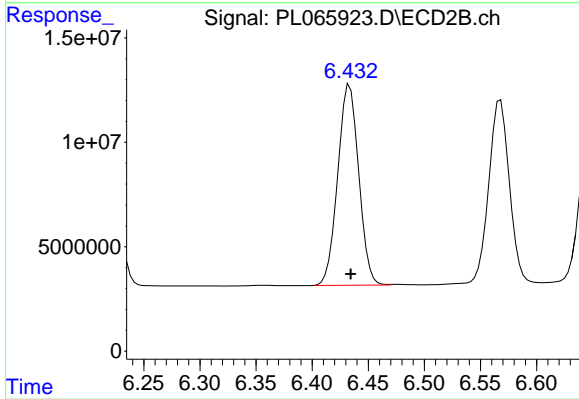
**Manual Integrations**  
**APPROVED**  
 Ankita  
 4/7/2021 4:50:53 PM



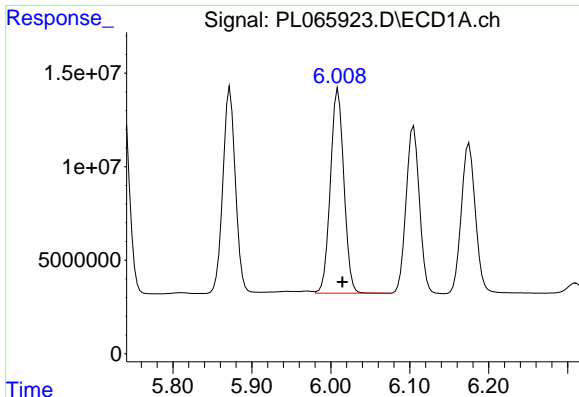
#13 Dieldrin  
 R.T.: 6.218 min  
 Delta R.T.: -0.001 min  
 Response: 145961817  
 Conc: 51.79 ng/ml



#14 Endrin  
 R.T.: 5.737 min  
 Delta R.T.: -0.005 min  
 Response: 136596185  
 Conc: 50.59 ng/ml



#14 Endrin  
 R.T.: 6.433 min  
 Delta R.T.: 0.000 min  
 Response: 125119100  
 Conc: 50.23 ng/ml



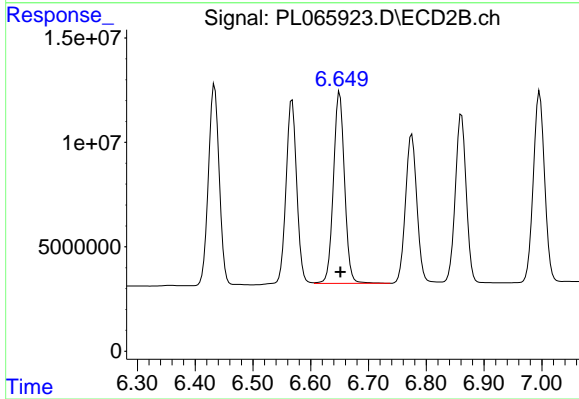
#15 Endosulfan II

R.T.: 6.009 min  
 Delta R.T.: -0.005 min  
 Response: 129811222  
 Conc: 52.27 ng/ml

Instrument :  
 ECD\_L  
 ClientSampled :  
 PSTDCCC050

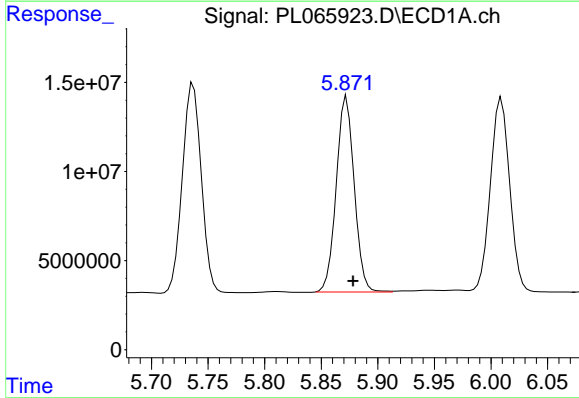
Manual Integrations  
 APPROVED

Ankita  
 4/7/2021 4:50:53 PM



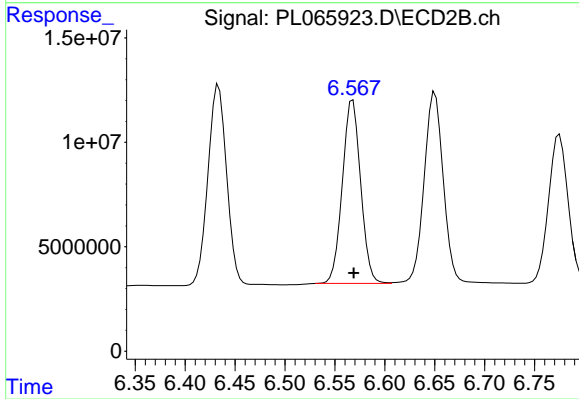
#15 Endosulfan II

R.T.: 6.650 min  
 Delta R.T.: 0.000 min  
 Response: 122753308  
 Conc: 51.94 ng/ml



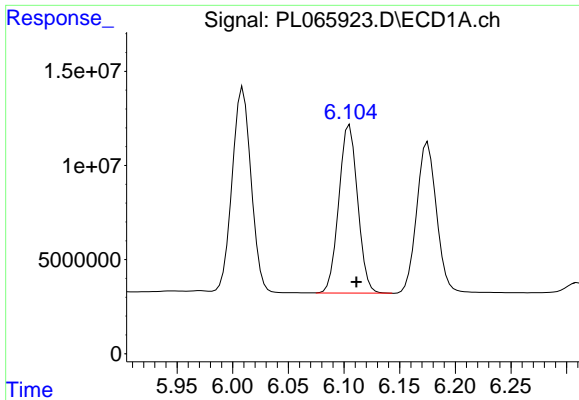
#16 4,4'-DDD

R.T.: 5.872 min  
 Delta R.T.: -0.006 min  
 Response: 121346324  
 Conc: 53.48 ng/ml



#16 4,4'-DDD

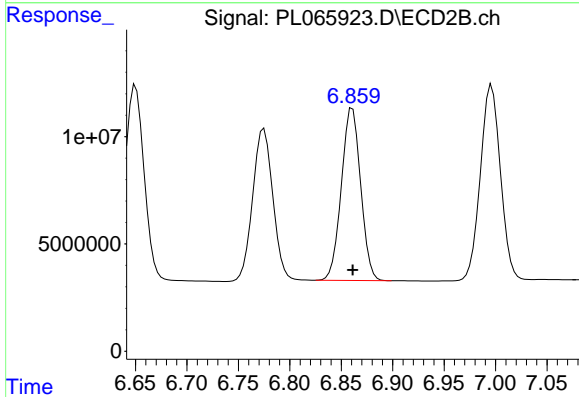
R.T.: 6.568 min  
 Delta R.T.: -0.001 min  
 Response: 112030995  
 Conc: 53.15 ng/ml



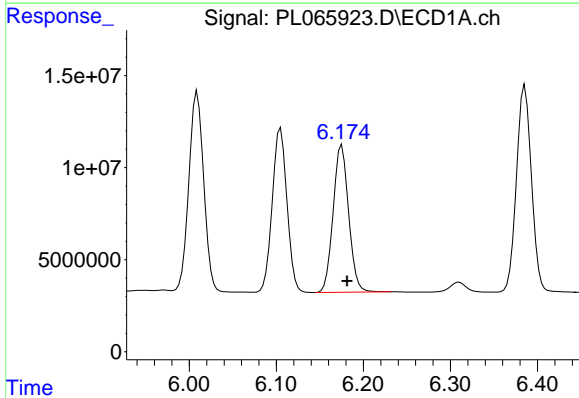
#17 4,4'-DDT  
 R.T.: 6.104 min  
 Delta R.T.: -0.007 min  
 Response: 105103905  
 Conc: 49.89 ng/ml m

Instrument :  
 ECD\_L  
 ClientSampled :  
 PSTDCCC050

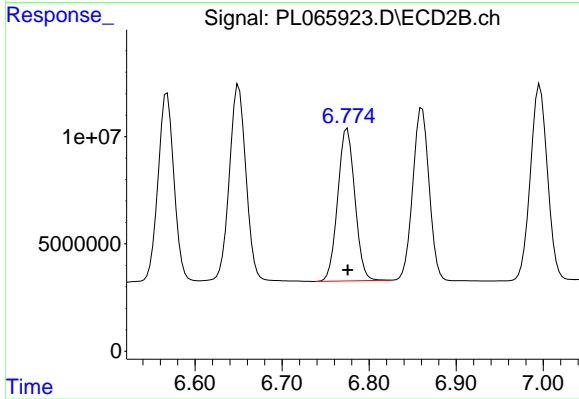
Manual Integrations  
 APPROVED  
 Ankita  
 4/7/2021 4:50:53 PM



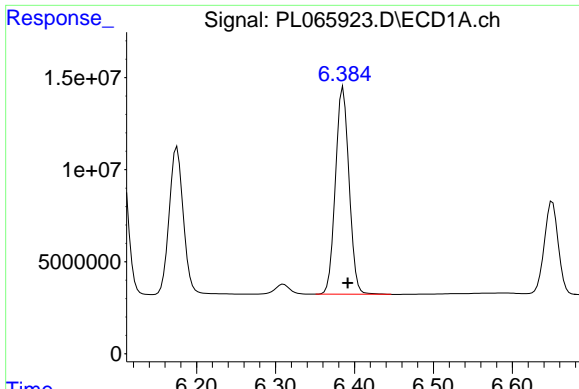
#17 4,4'-DDT  
 R.T.: 6.861 min  
 Delta R.T.: 0.000 min  
 Response: 104841148  
 Conc: 46.82 ng/ml



#18 Endrin aldehyde  
 R.T.: 6.175 min  
 Delta R.T.: -0.006 min  
 Response: 99054149  
 Conc: 52.35 ng/ml



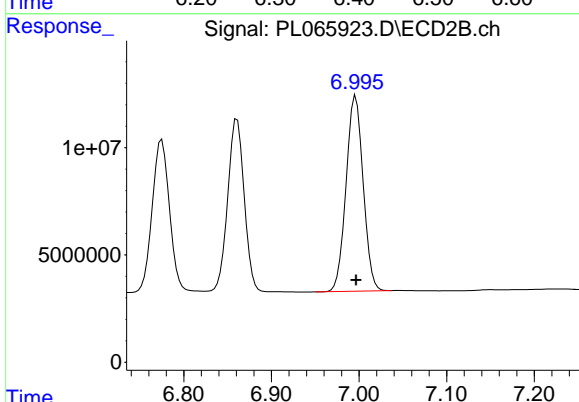
#18 Endrin aldehyde  
 R.T.: 6.775 min  
 Delta R.T.: 0.000 min  
 Response: 96979722  
 Conc: 51.11 ng/ml



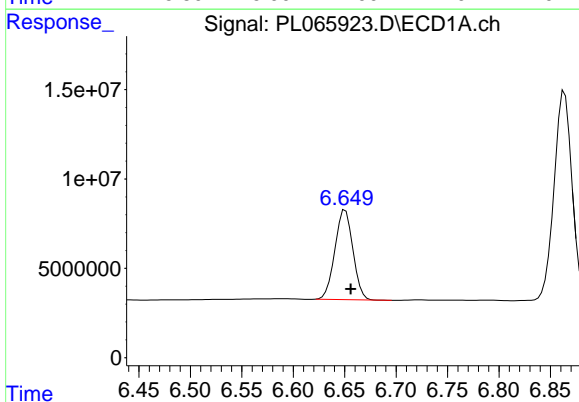
#19 Endosulfan Sulfate  
 R.T.: 6.386 min  
 Delta R.T.: -0.006 min  
 Response: 134788962  
 Conc: 52.24 ng/ml

Instrument :  
 ECD\_L  
 ClientSampled :  
 PSTDCCC050

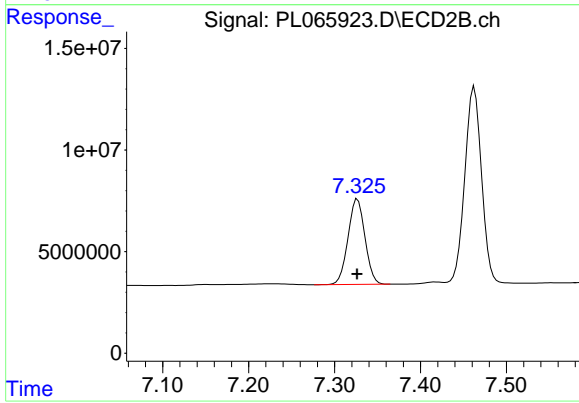
Manual Integrations  
**APPROVED**  
 Ankita  
 4/7/2021 4:50:53 PM



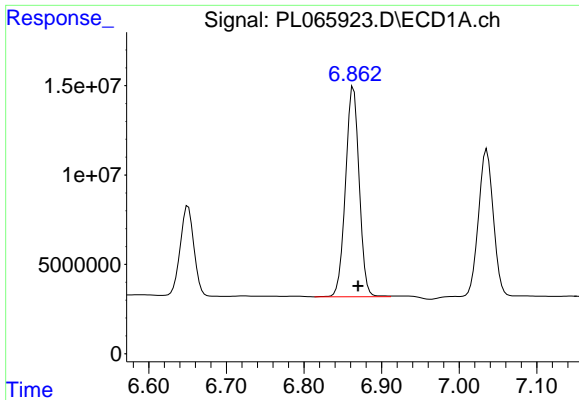
#19 Endosulfan Sulfate  
 R.T.: 6.996 min  
 Delta R.T.: 0.000 min  
 Response: 123497504  
 Conc: 50.91 ng/ml



#20 Methoxychlor  
 R.T.: 6.651 min  
 Delta R.T.: -0.005 min  
 Response: 61050547  
 Conc: 48.63 ng/ml



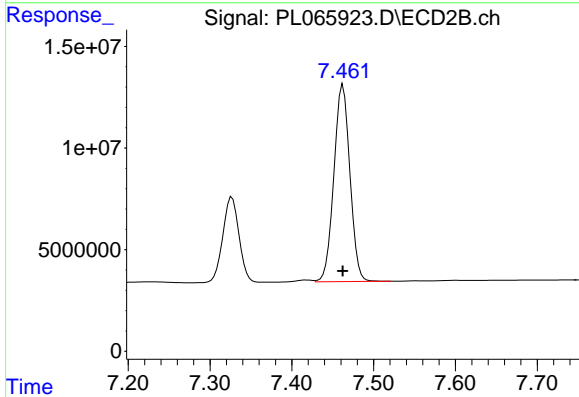
#20 Methoxychlor  
 R.T.: 7.327 min  
 Delta R.T.: 0.000 min  
 Response: 57778018  
 Conc: 45.62 ng/ml



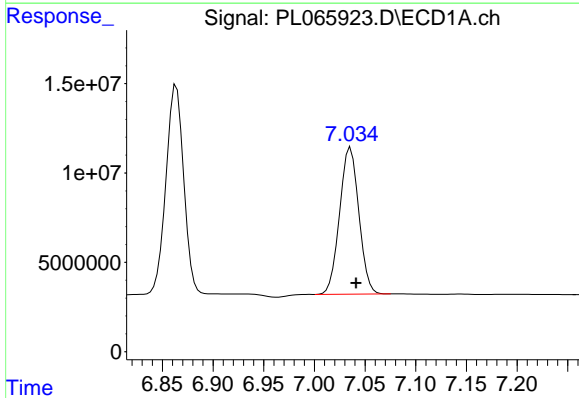
#21 Endrin ketone  
 R.T.: 6.864 min  
 Delta R.T.: -0.006 min  
 Response: 143695450  
 Conc: 52.40 ng/ml

**Instrument :**  
 ECD\_L  
**ClientSampled :**  
 PSTDCCC050

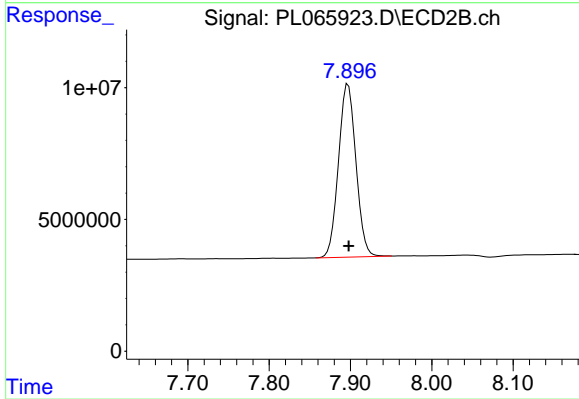
**Manual Integrations**  
**APPROVED**  
 Ankita  
 4/7/2021 4:50:53 PM



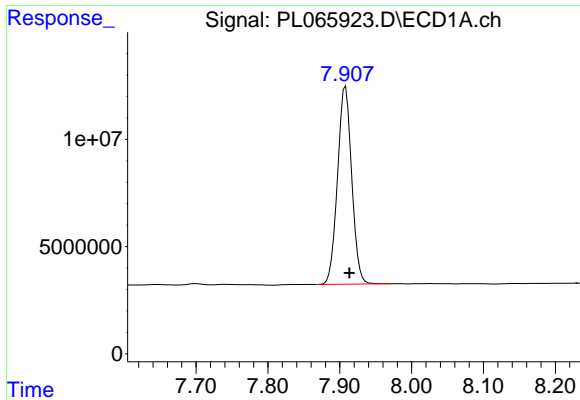
#21 Endrin ketone  
 R.T.: 7.463 min  
 Delta R.T.: 0.000 min  
 Response: 131972316  
 Conc: 51.35 ng/ml



#22 Mirex  
 R.T.: 7.036 min  
 Delta R.T.: -0.005 min  
 Response: 108372189  
 Conc: 51.75 ng/ml



#22 Mirex  
 R.T.: 7.897 min  
 Delta R.T.: 0.000 min  
 Response: 97870999  
 Conc: 50.14 ng/ml



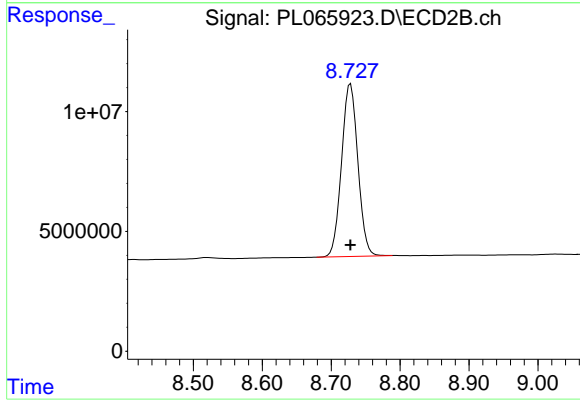
#28 Decachlorobiphenyl

R.T.: 7.908 min  
Delta R.T.: -0.005 min  
Response: 126497427  
Conc: 54.62 ng/ml

Instrument :  
ECD\_L  
ClientSampleId :  
PSTDCCC050

Manual Integrations  
APPROVED

Ankita  
4/7/2021 4:50:53 PM



#28 Decachlorobiphenyl

R.T.: 8.728 min  
Delta R.T.: 0.000 min  
Response: 118780484  
Conc: 52.69 ng/ml