

Data Path : Z:\pestpcbsrv\HPCHEM1\ECD_L\Data\PL040820\
 Data File : PL057857.D
 Signal(s) : Signal #1: ECD1A.ch Signal #2: ECD2B.ch
 Acq On : 08 Apr 2020 16:19
 Operator : AJ\MA
 Sample : L2171-01
 Misc :
 ALS Vial : 16 Sample Multiplier: 1

Instrument :
 ECD_L
 ClientSampleId :
 FRAC-COMP

Integration File signal 1: autoint1.e
 Integration File signal 2: autoint2.e
 Quant Time: Apr 09 01:09:50 2020
 Quant Method : Z:\pestpcbsrv\HPCHEM1\ECD_L\methods\PL040320.M
 Quant Title : GC Extractables
 QLast Update : Sat Apr 04 06:41:11 2020
 Response via : Initial Calibration
 Integrator: ChemStation

Volume Inj. : 1 µl
 Signal #1 Phase : ZB-MR2 Signal #2 Phase: ZB-MR1
 Signal #1 Info : 30M x 0.32mm x0.2 Signal #2 Info : 30M x 0.32mm x0.5µm

Compound	RT#1	RT#2	Resp#1	Resp#2	ng/ml	ng/ml
System Monitoring Compounds						
1) SA Tetrachlo...	3.457	3.956	215.6E6	49567979	21.384	22.841
28) SA Decachlor...	8.205	8.979	184.6E6	41914804	17.907	18.764
Target Compounds						
2) A alpha-BHC	3.878f	0.000	11523116	0	0.663	N.D. #
3) MA gamma-BHC...	4.185	0.000	1724256	0	0.119	N.D. #
4) MA Heptachlor	4.475	5.135	5837664	128.8E6	0.364	38.390 #
5) MB Aldrin	4.740	5.424	23719782	3391047	1.611	1.047 #
6) B beta-BHC	4.444	0.000	1374889	0	0.218	N.D. #
8) B Heptachlo...	5.156	5.804	9521962	22049066	0.708	8.165 #
9) A Endosulfan I	5.518	6.146f	11093953	2409288	0.905	0.808
10) B gamma-Chl...	5.412f	6.028f	153.4E6	830998	11.294	0.256 #
11) B alpha-Chl...	0.000	6.146f	0	2409288	N.D.	0.736 #
13) MA Dieldrin	5.753	6.435	2822433	2493062	0.217	0.816 #
14) MA Endrin	5.996	0.000	24611725	0	2.108	N.D. #
15) B Endosulfa...	6.266f	6.854	44606030	7400224	4.032	2.853 #
16) A 4,4'-DDD	6.144	0.000	18475108	0	1.849	N.D. #
17) MA 4,4'-DDT	6.370	0.000	4843482	0	0.477	N.D. #
18) B Endrin al...	6.474f	6.949f	2751008	10303705	0.294	4.638 #
19) B Endosulfa...	0.000	7.200	0	3995724	N.D.	1.684 #
20) A Methoxychlor	6.900f	0.000	26446349	0	4.797	N.D. #
22) Mirex	7.340	8.098f	12005386	865861	1.465	0.471 #
23) Chlordane-1	4.326	4.935	12646888	10621479	34.195	120.447 #
24) Chlordane-2	4.845f	5.398	66275886	3531445	164.165	33.840 #
25) Chlordane-3	5.412	6.028f	153.4E6	830998	125.459	1.921 #
26) Chlordane-4	0.000	6.146f	0	2409288	N.D.	4.590 #
27) Chlordane-5	6.266f	6.949f	44606030	10303705	117.920	120.848

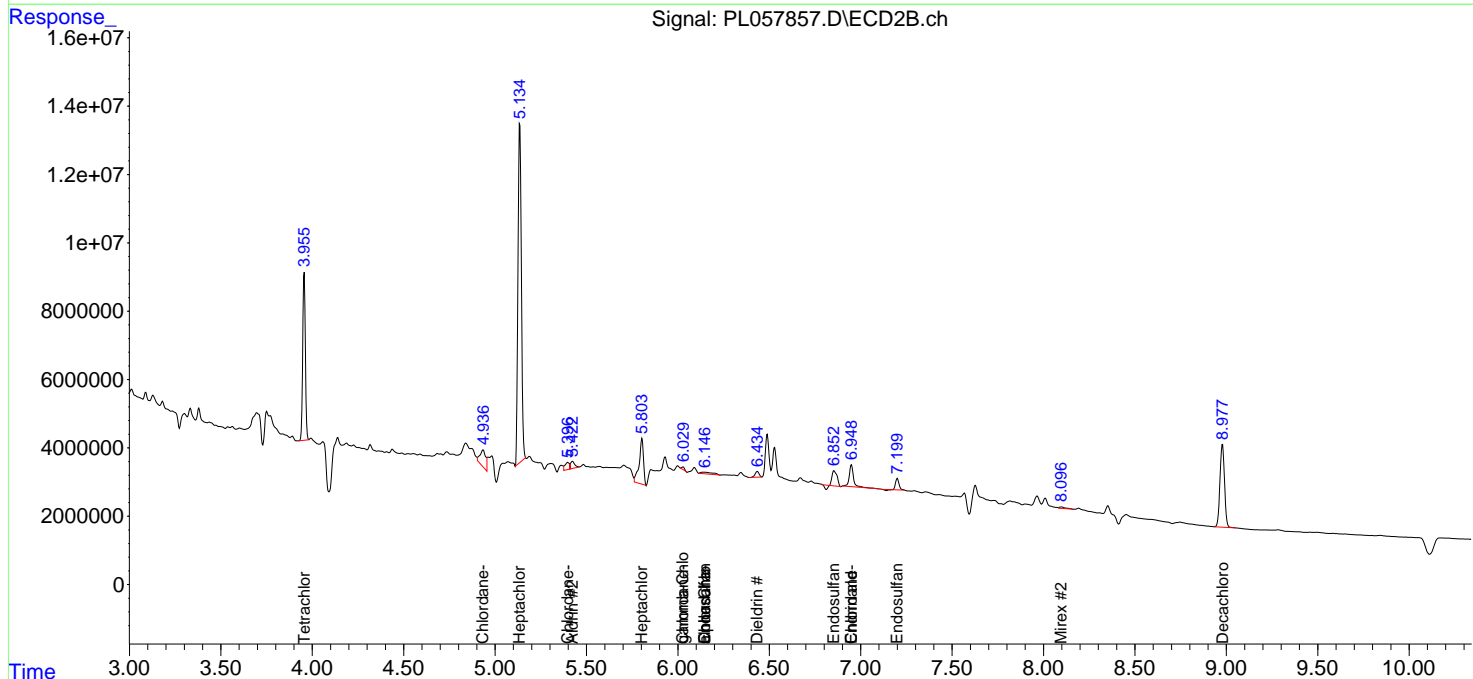
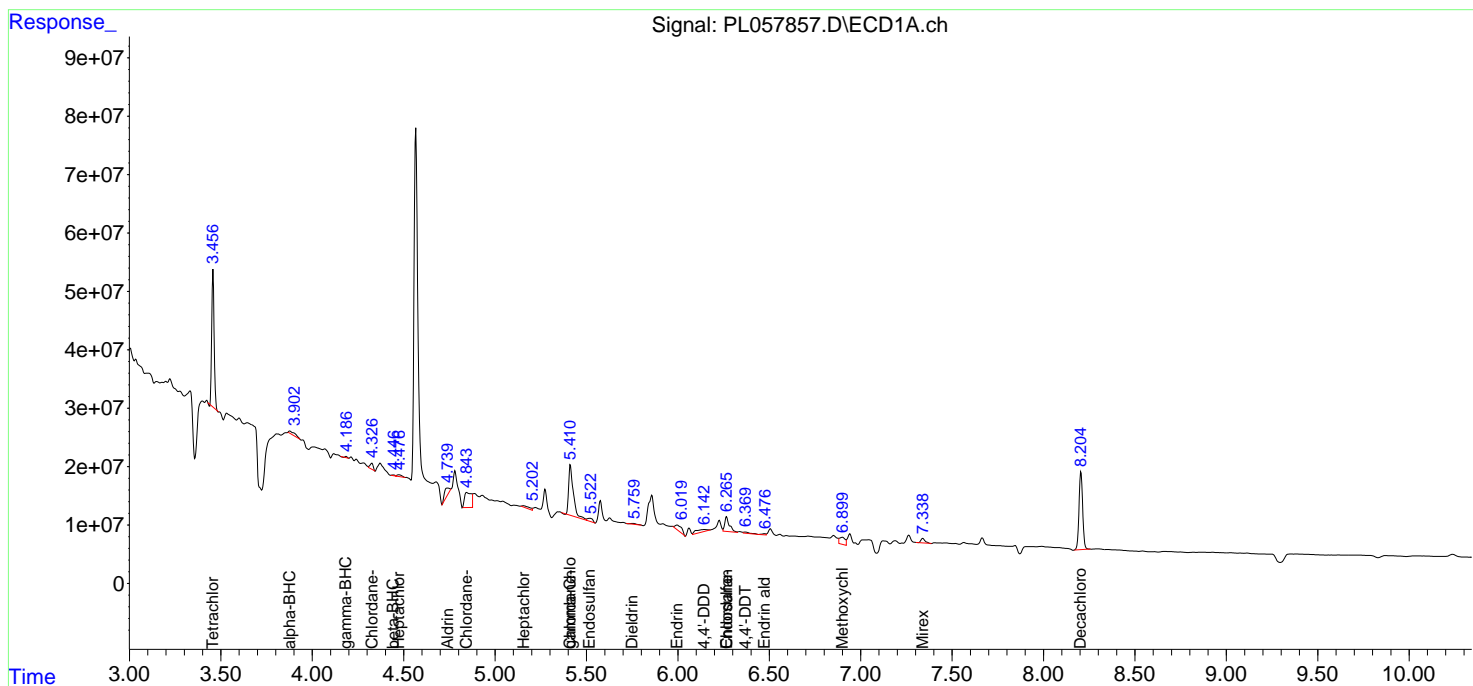
(f)=RT Delta > 1/2 Window (#)=Amounts differ by > 25% (m)=manual int.

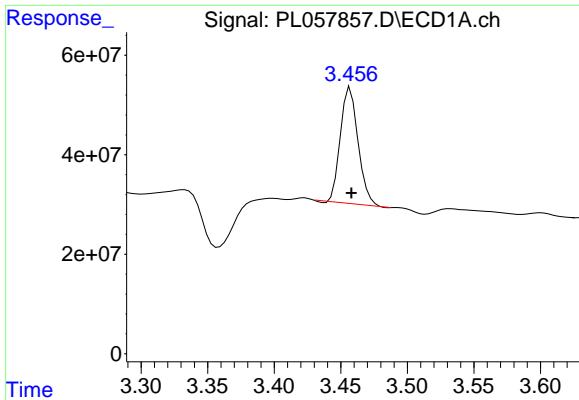
Data Path : Z:\pestpcbsrv\HPCHEM1\ECD_L\Data\PL040820\
 Data File : PL057857.D
 Signal(s) : Signal #1: ECD1A.ch Signal #2: ECD2B.ch
 Acq On : 08 Apr 2020 16:19
 Operator : AJ\MA
 Sample : L2171-01
 Misc :
 ALS Vial : 16 Sample Multiplier: 1

Instrument :
 ECD_L
 ClientSampled :
 FRAC-COMP

Integration File signal 1: autoint1.e
 Integration File signal 2: autoint2.e
 Quant Time: Apr 09 01:09:50 2020
 Quant Method : Z:\pestpcbsrv\HPCHEM1\ECD_L\methods\PL040320.M
 Quant Title : GC Extractables
 QLast Update : Sat Apr 04 06:41:11 2020
 Response via : Initial Calibration
 Integrator: ChemStation

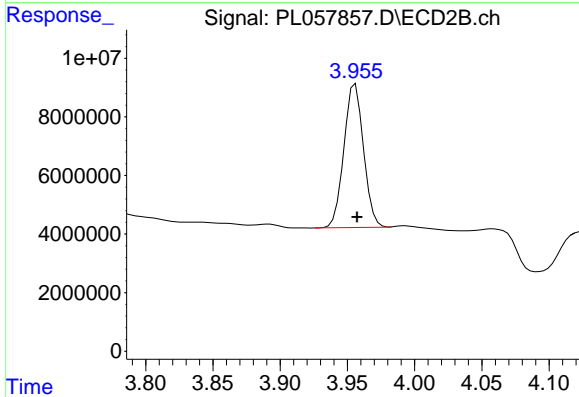
Volume Inj. : 1 µl
 Signal #1 Phase : ZB-MR2 Signal #2 Phase: ZB-MR1
 Signal #1 Info : 30M x 0.32mm x0.2 Signal #2 Info : 30M x 0.32mm x0.5µm



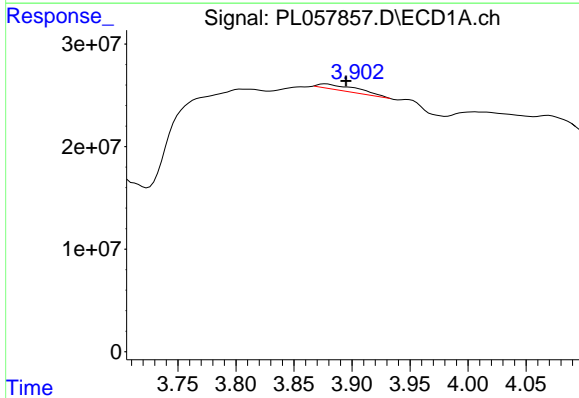


#1 Tetrachloro-m-xylene
 R.T.: 3.457 min
 Delta R.T.: 0.000 min
 Response: 215570577
 Conc: 21.38 ng/ml

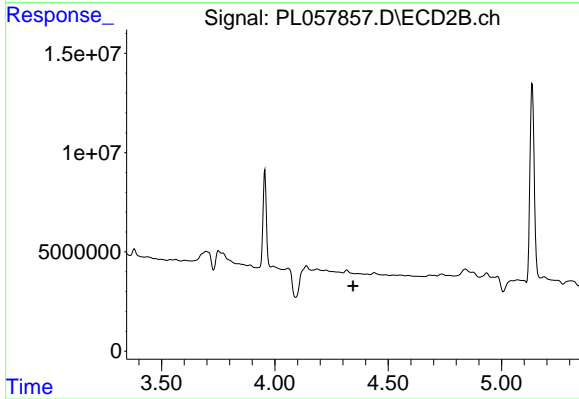
Instrument :
 ECD_L
 ClientSampleId :
 FRAC-COMP



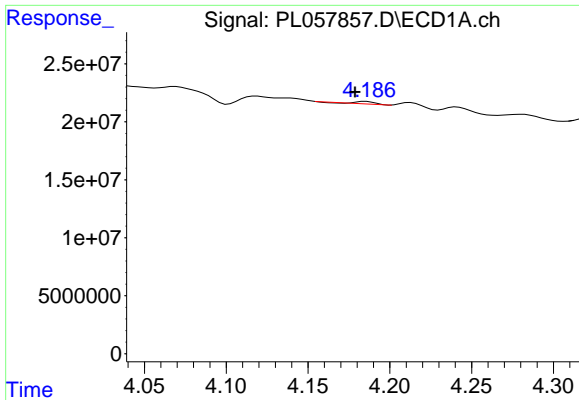
#1 Tetrachloro-m-xylene
 R.T.: 3.956 min
 Delta R.T.: -0.001 min
 Response: 49567979
 Conc: 22.84 ng/ml



#2 alpha-BHC
 R.T.: 3.878 min
 Delta R.T.: -0.017 min
 Response: 11523116
 Conc: 0.66 ng/ml

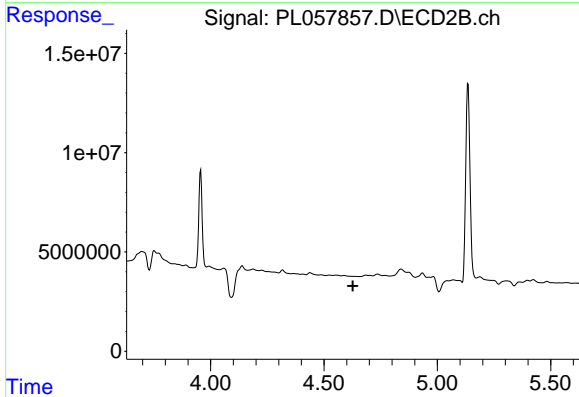


#2 alpha-BHC
 R.T.: 0.000 min
 Exp R.T.: 4.345 min
 Response: 0
 Conc: N.D.

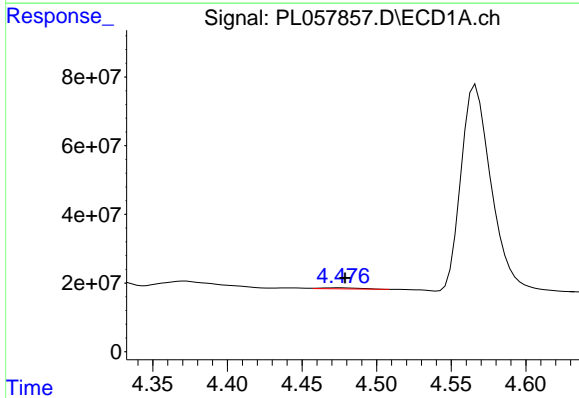


#3 gamma-BHC (Lindane)
 R.T.: 4.185 min
 Delta R.T.: 0.007 min
 Response: 1724256
 Conc: 0.12 ng/ml

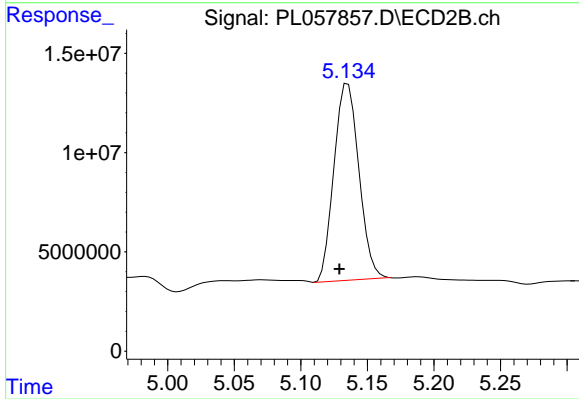
Instrument :
 ECD_L
 ClientSampled :
 FRAC-COMP



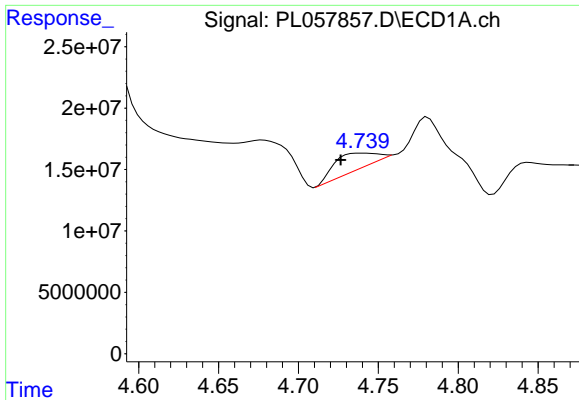
#3 gamma-BHC (Lindane)
 R.T.: 0.000 min
 Exp R.T. : 4.627 min
 Response: 0
 Conc: N.D.



#4 Heptachlor
 R.T.: 4.475 min
 Delta R.T.: -0.004 min
 Response: 5837664
 Conc: 0.36 ng/ml

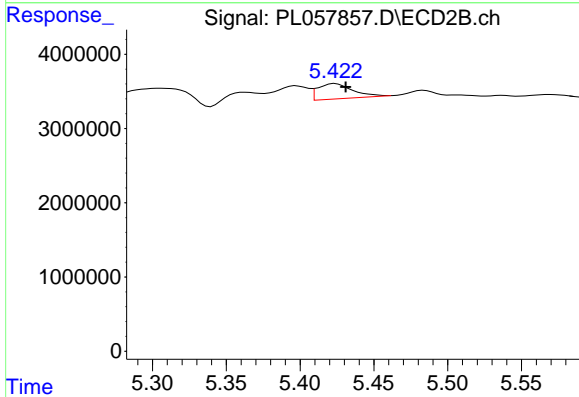


#4 Heptachlor
 R.T.: 5.135 min
 Delta R.T.: 0.007 min
 Response: 128843313
 Conc: 38.39 ng/ml

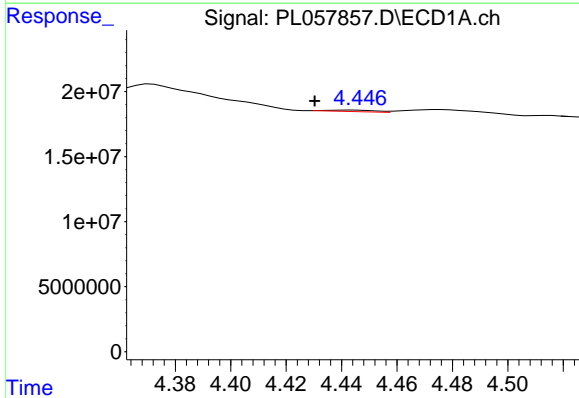


#5 Aldrin
 R.T.: 4.740 min
 Delta R.T.: 0.013 min
 Response: 23719782
 Conc: 1.61 ng/ml

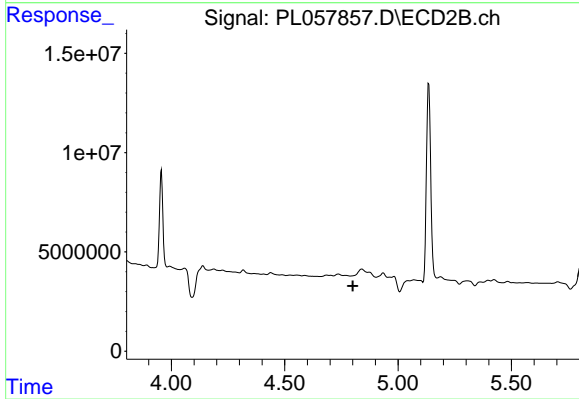
Instrument :
 ECD_L
 ClientSampleId :
 FRAC-COMP



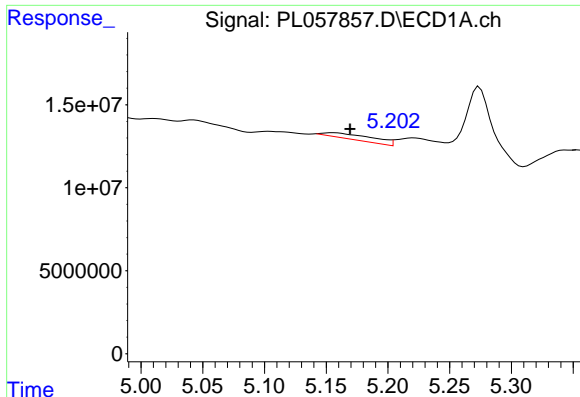
#5 Aldrin
 R.T.: 5.424 min
 Delta R.T.: -0.007 min
 Response: 3391047
 Conc: 1.05 ng/ml



#6 beta-BHC
 R.T.: 4.444 min
 Delta R.T.: 0.013 min
 Response: 1374889
 Conc: 0.22 ng/ml



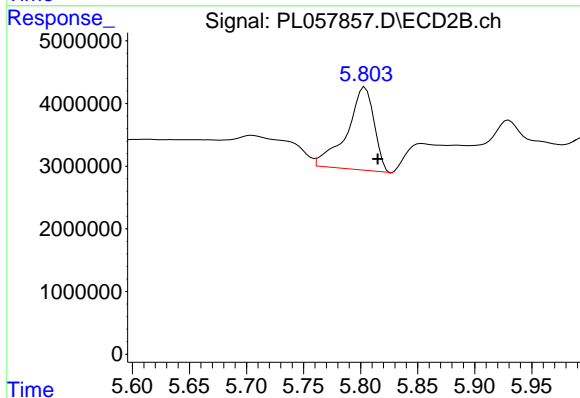
#6 beta-BHC
 R.T.: 0.000 min
 Exp R.T. : 4.800 min
 Response: 0
 Conc: N.D.



#8 Heptachlor epoxide

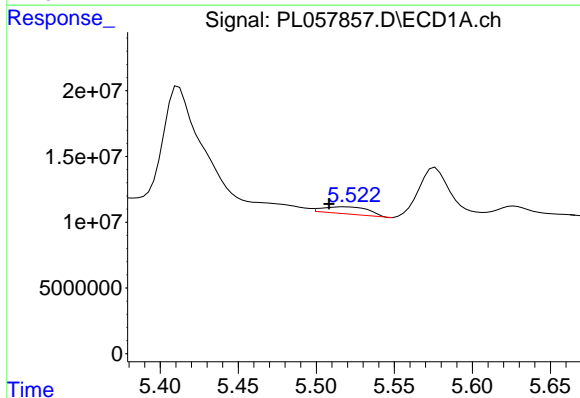
R.T.: 5.156 min
 Delta R.T.: -0.013 min
 Response: 9521962
 Conc: 0.71 ng/ml

Instrument :
 ECD_L
 ClientSampleId :
 FRAC-COMP



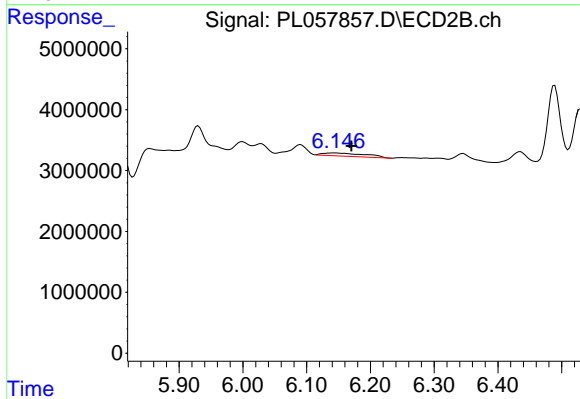
#8 Heptachlor epoxide

R.T.: 5.804 min
 Delta R.T.: -0.011 min
 Response: 22049066
 Conc: 8.17 ng/ml



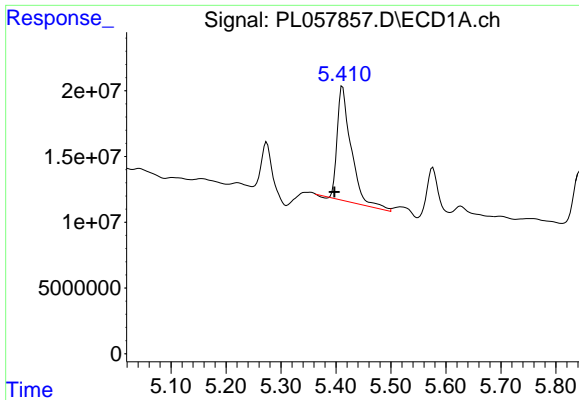
#9 Endosulfan I

R.T.: 5.518 min
 Delta R.T.: 0.010 min
 Response: 11093953
 Conc: 0.91 ng/ml



#9 Endosulfan I

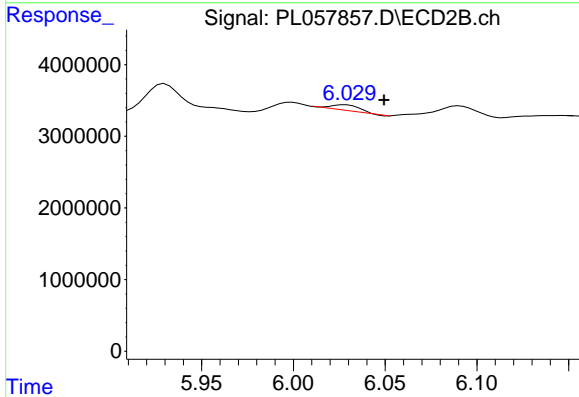
R.T.: 6.146 min
 Delta R.T.: -0.025 min
 Response: 2409288
 Conc: 0.81 ng/ml



#10 gamma-Chlordane

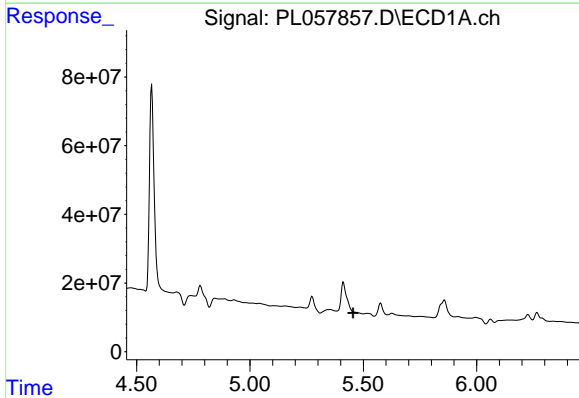
R.T.: 5.412 min
 Delta R.T.: 0.015 min
 Response: 153387642
 Conc: 11.29 ng/ml

Instrument :
 ECD_L
 ClientSampleId :
 FRAC-COMP



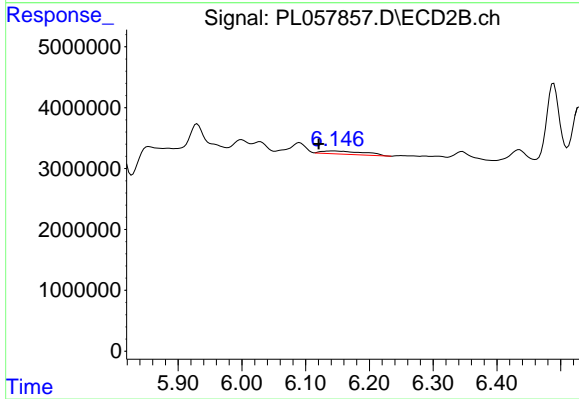
#10 gamma-Chlordane

R.T.: 6.028 min
 Delta R.T.: -0.021 min
 Response: 830998
 Conc: 0.26 ng/ml



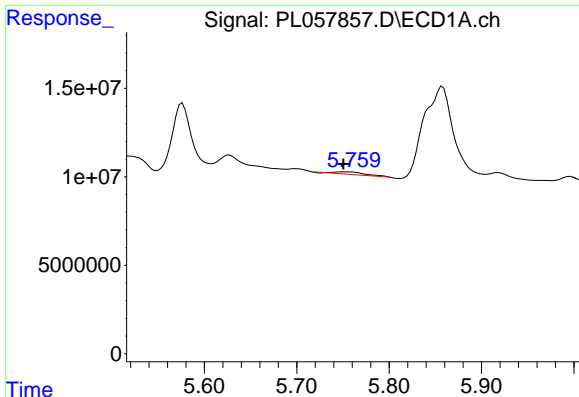
#11 alpha-Chlordane

R.T.: 0.000 min
 Exp R.T. : 5.455 min
 Response: 0
 Conc: N.D.



#11 alpha-Chlordane

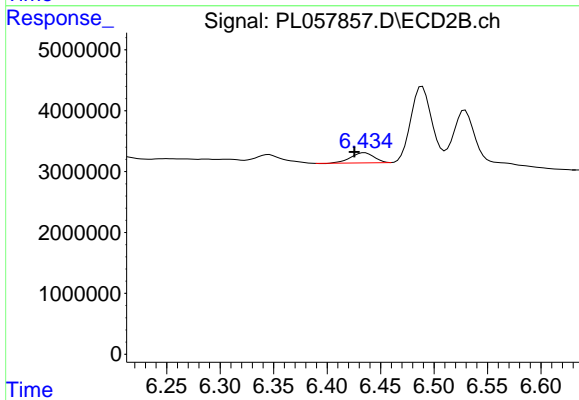
R.T.: 6.146 min
 Delta R.T.: 0.025 min
 Response: 2409288
 Conc: 0.74 ng/ml



#13 Dieldrin

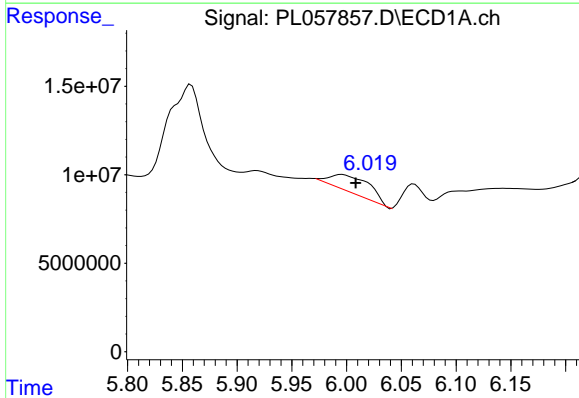
R.T.: 5.753 min
 Delta R.T.: 0.002 min
 Response: 2822433
 Conc: 0.22 ng/ml

Instrument :
 ECD_L
 ClientSampleId :
 FRAC-COMP



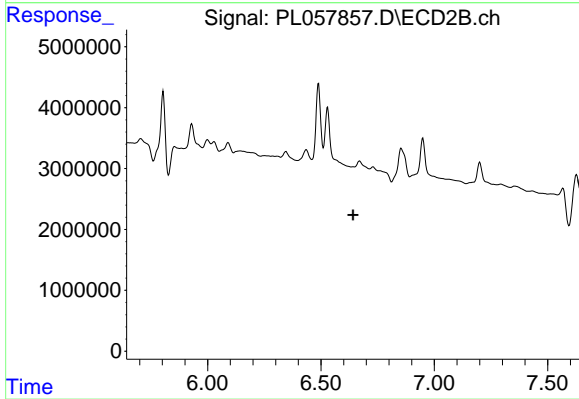
#13 Dieldrin

R.T.: 6.435 min
 Delta R.T.: 0.010 min
 Response: 2493062
 Conc: 0.82 ng/ml



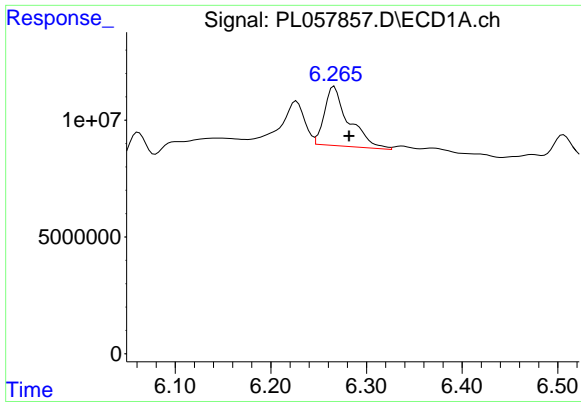
#14 Endrin

R.T.: 5.996 min
 Delta R.T.: -0.013 min
 Response: 24611725
 Conc: 2.11 ng/ml



#14 Endrin

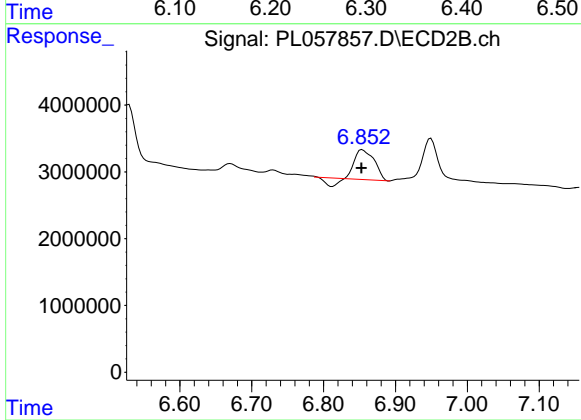
R.T.: 0.000 min
 Exp R.T.: 6.642 min
 Response: 0
 Conc: N.D.



#15 Endosulfan II

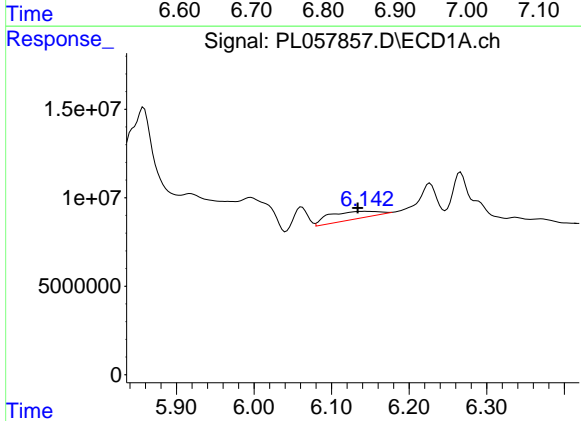
R.T.: 6.266 min
 Delta R.T.: -0.015 min
 Response: 44606030
 Conc: 4.03 ng/ml

Instrument :
 ECD_L
 ClientSampled :
 FRAC-COMP



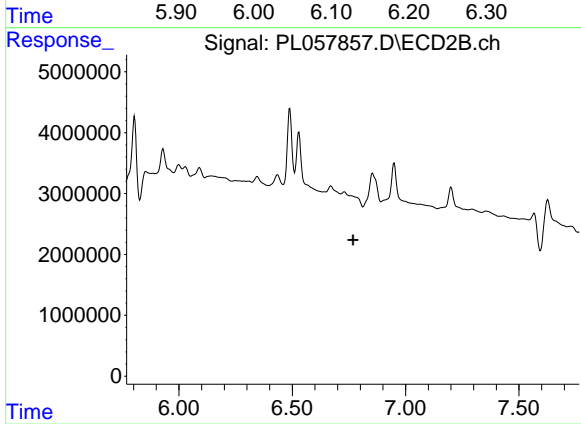
#15 Endosulfan II

R.T.: 6.854 min
 Delta R.T.: 0.002 min
 Response: 7400224
 Conc: 2.85 ng/ml



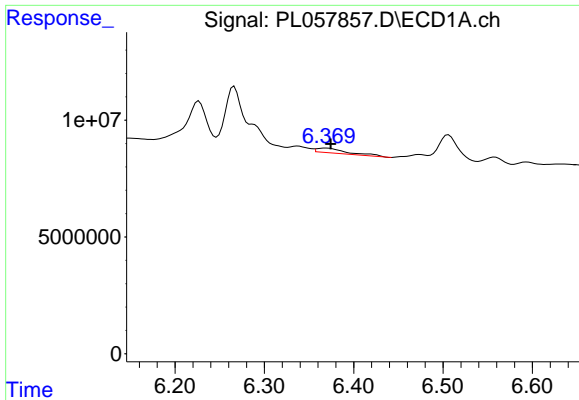
#16 4,4'-DDD

R.T.: 6.144 min
 Delta R.T.: 0.011 min
 Response: 18475108
 Conc: 1.85 ng/ml



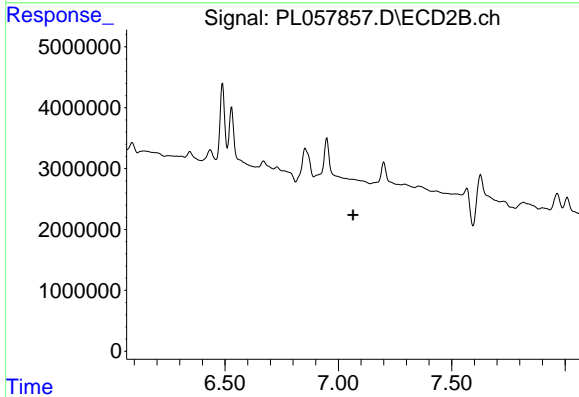
#16 4,4'-DDD

R.T.: 0.000 min
 Exp R.T. : 6.769 min
 Response: 0
 Conc: N.D.

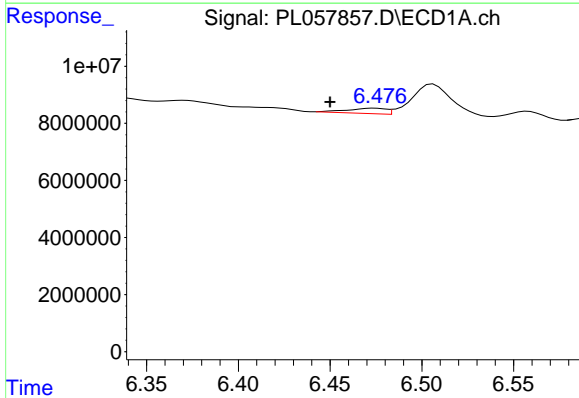


#17 4,4'-DDT
 R.T.: 6.370 min
 Delta R.T.: -0.005 min
 Response: 4843482
 Conc: 0.48 ng/ml

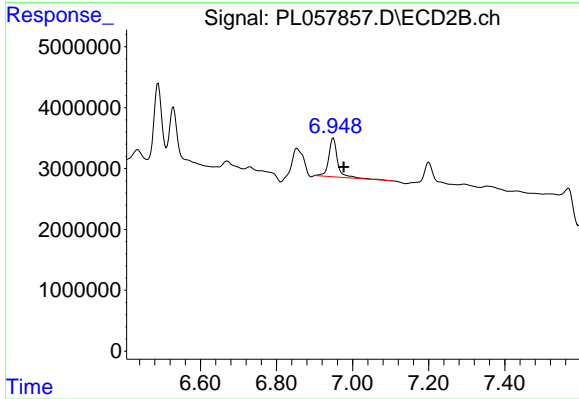
Instrument :
 ECD_L
 ClientSampleId :
 FRAC-COMP



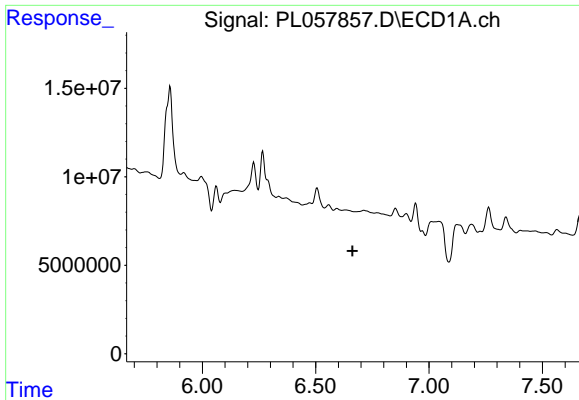
#17 4,4'-DDT
 R.T.: 0.000 min
 Exp R.T. : 7.066 min
 Response: 0
 Conc: N.D.



#18 Endrin aldehyde
 R.T.: 6.474 min
 Delta R.T.: 0.024 min
 Response: 2751008
 Conc: 0.29 ng/ml



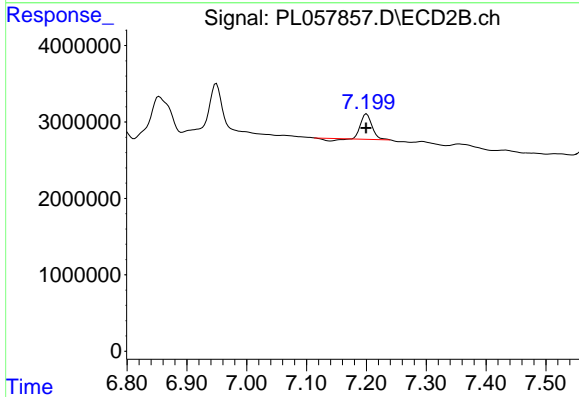
#18 Endrin aldehyde
 R.T.: 6.949 min
 Delta R.T.: -0.027 min
 Response: 10303705
 Conc: 4.64 ng/ml



#19 Endosulfan Sulfate

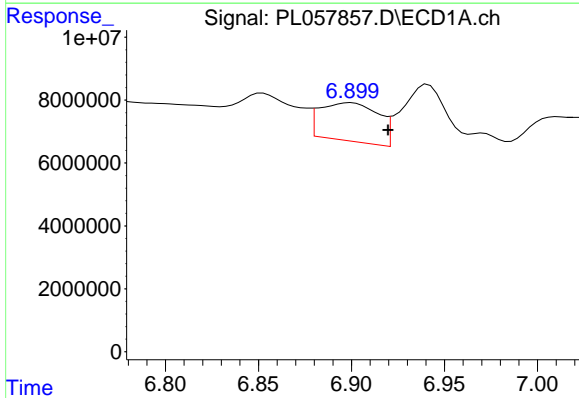
R.T.: 0.000 min
 Exp R.T. : 6.663 min
 Response: 0
 Conc: N.D.

Instrument :
 ECD_L
 ClientSampleId :
 FRAC-COMP



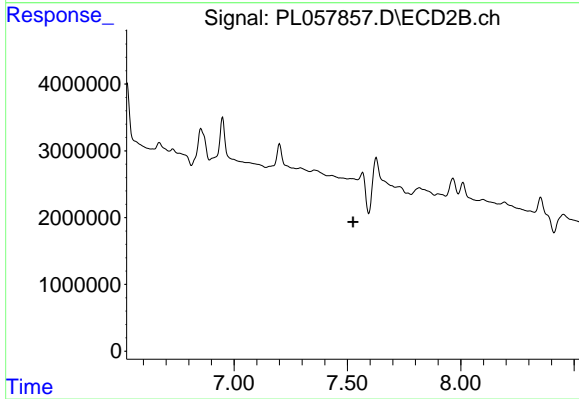
#19 Endosulfan Sulfate

R.T.: 7.200 min
 Delta R.T.: 0.000 min
 Response: 3995724
 Conc: 1.68 ng/ml



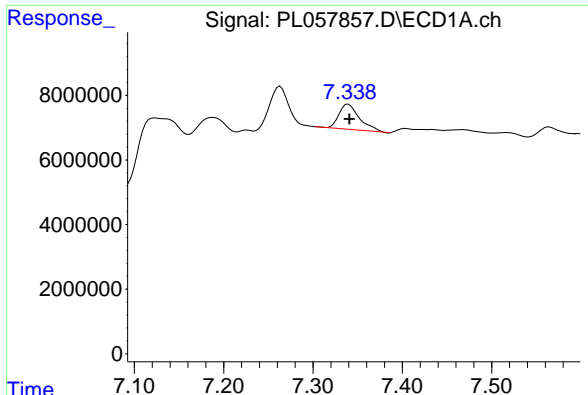
#20 Methoxychlor

R.T.: 6.900 min
 Delta R.T.: -0.020 min
 Response: 26446349
 Conc: 4.80 ng/ml



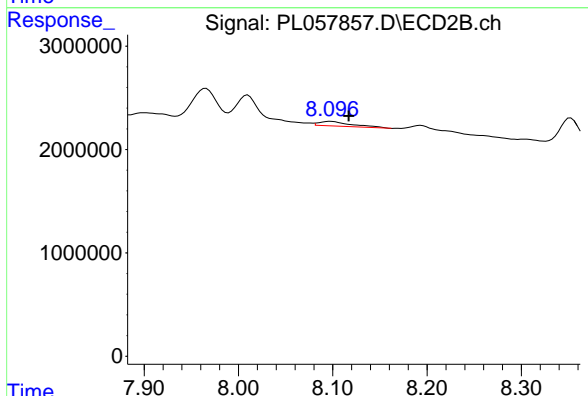
#20 Methoxychlor

R.T.: 0.000 min
 Exp R.T. : 7.525 min
 Response: 0
 Conc: N.D.

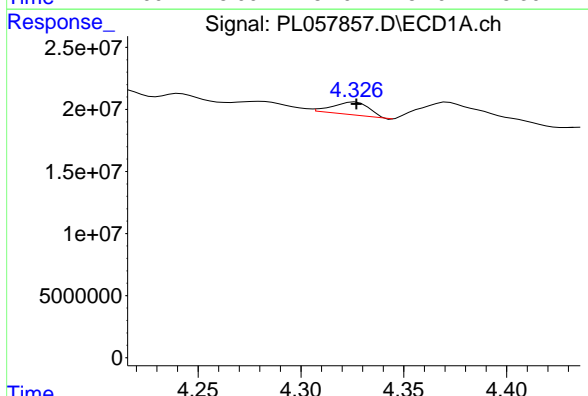


#22 Mirex
 R.T.: 7.340 min
 Delta R.T.: 0.000 min
 Response: 12005386
 Conc: 1.46 ng/ml

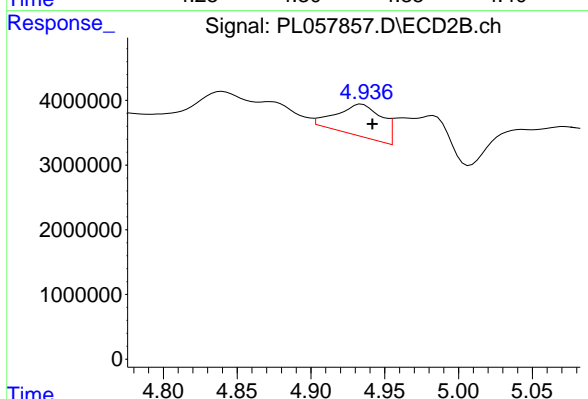
Instrument :
 ECD_L
 ClientSampleId :
 FRAC-COMP



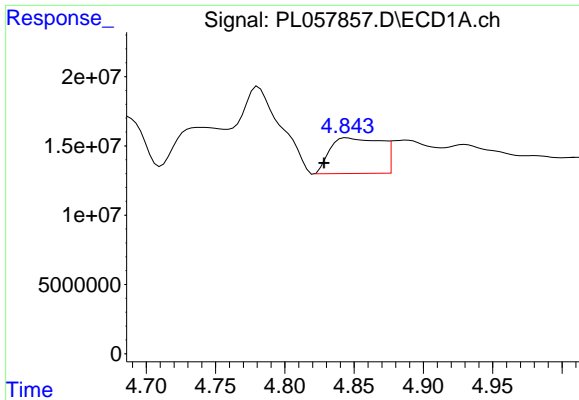
#22 Mirex
 R.T.: 8.098 min
 Delta R.T.: -0.019 min
 Response: 865861
 Conc: 0.47 ng/ml



#23 Chlordane-1
 R.T.: 4.326 min
 Delta R.T.: 0.000 min
 Response: 12646888
 Conc: 34.19 ng/ml

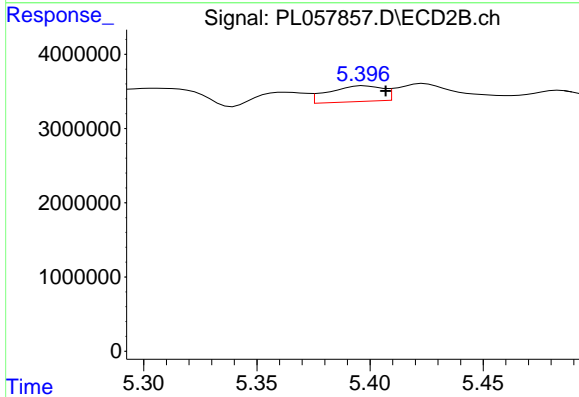


#23 Chlordane-1
 R.T.: 4.935 min
 Delta R.T.: -0.007 min
 Response: 10621479
 Conc: 120.45 ng/ml

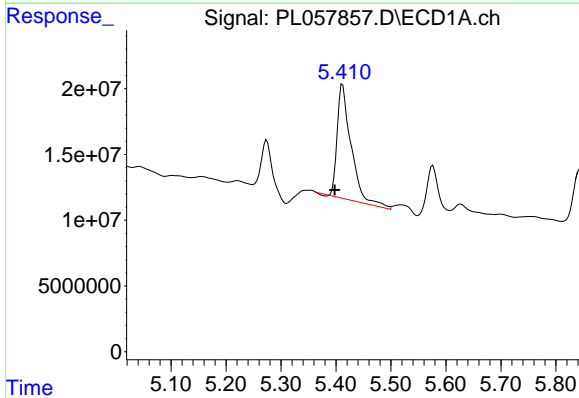


#24 Chlordane-2
 R.T.: 4.845 min
 Delta R.T.: 0.017 min
 Response: 66275886
 Conc: 164.16 ng/ml

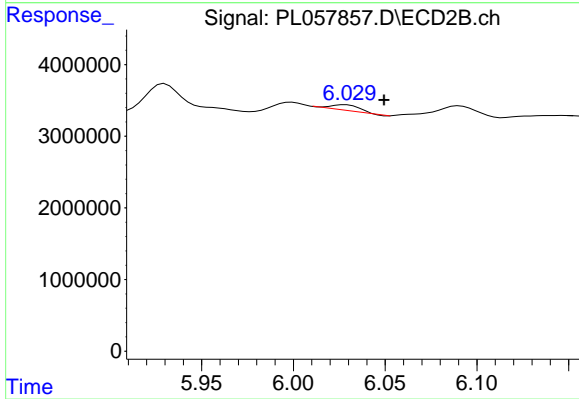
Instrument :
 ECD_L
 ClientSampleId :
 FRAC-COMP



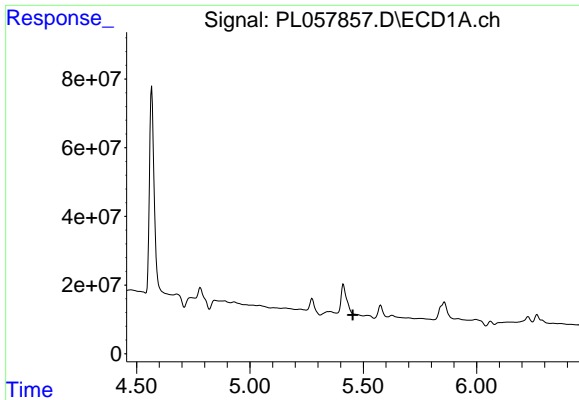
#24 Chlordane-2
 R.T.: 5.398 min
 Delta R.T.: -0.009 min
 Response: 3531445
 Conc: 33.84 ng/ml



#25 Chlordane-3
 R.T.: 5.412 min
 Delta R.T.: 0.014 min
 Response: 153387642
 Conc: 125.46 ng/ml



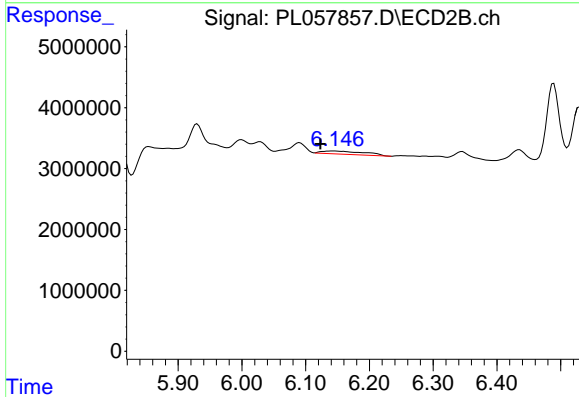
#25 Chlordane-3
 R.T.: 6.028 min
 Delta R.T.: -0.021 min
 Response: 830998
 Conc: 1.92 ng/ml



#26 Chlordane-4

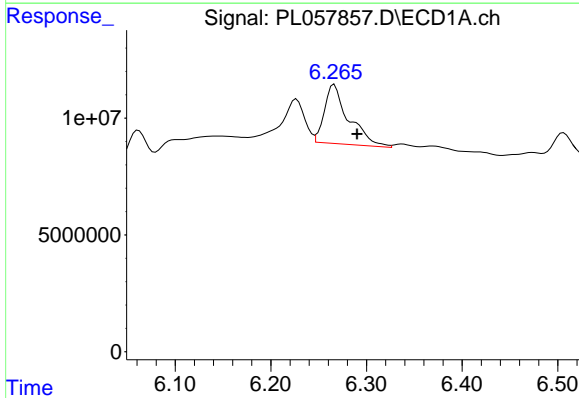
R.T.: 0.000 min
 Exp R.T.: 5.454 min
 Response: 0
 Conc: N.D.

Instrument :
 ECD_L
 ClientSampleId :
 FRAC-COMP



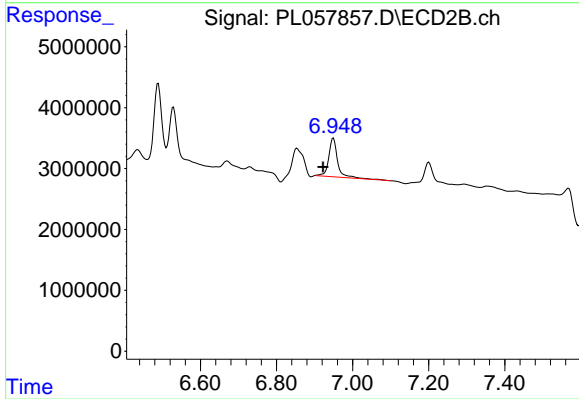
#26 Chlordane-4

R.T.: 6.146 min
 Delta R.T.: 0.022 min
 Response: 2409288
 Conc: 4.59 ng/ml



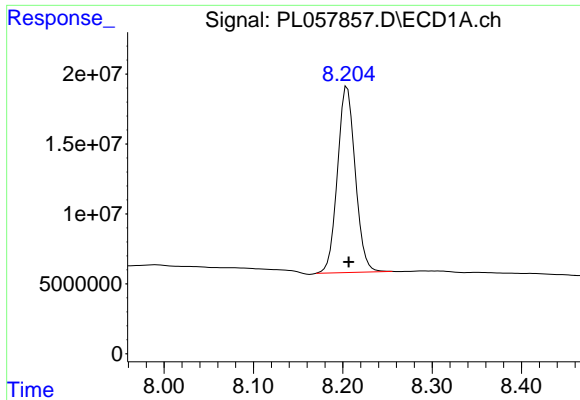
#27 Chlordane-5

R.T.: 6.266 min
 Delta R.T.: -0.024 min
 Response: 44606030
 Conc: 117.92 ng/ml



#27 Chlordane-5

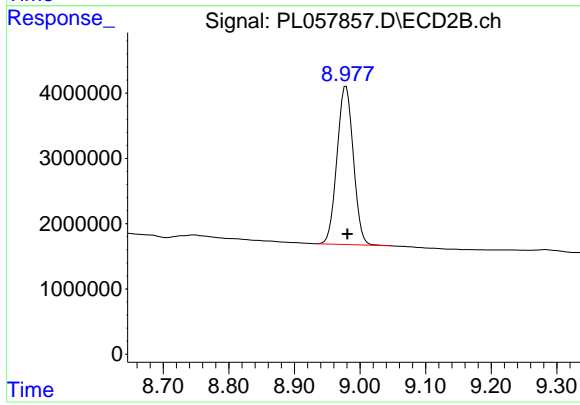
R.T.: 6.949 min
 Delta R.T.: 0.027 min
 Response: 10303705
 Conc: 120.85 ng/ml



#28 Decachlorobiphenyl

R.T.: 8.205 min
Delta R.T.: -0.002 min
Response: 184597759
Conc: 17.91 ng/ml

Instrument :
ECD_L
ClientSampled :
FRAC-COMP



#28 Decachlorobiphenyl

R.T.: 8.979 min
Delta R.T.: -0.002 min
Response: 41914804
Conc: 18.76 ng/ml