

Data Path : Z:\pestpcbsrv\HPCHEM1\ECD_L\Data\PL040919\
 Data File : PL047137.D
 Signal(s) : Signal #1: ECD1A.ch Signal #2: ECD2B.ch
 Acq On : 09 Apr 2019 19:55
 Operator : AJ\SJ
 Sample : K2338-13
 Misc :
 ALS Vial : 28 Sample Multiplier: 1

Instrument :
 ECD_L
 ClientSampleId :
 TP-3-SHALLOW

Integration File signal 1: autoint1.e
 Integration File signal 2: autoint2.e
 Quant Time: Apr 10 01:06:43 2019
 Quant Method : Z:\pestpcbsrv\HPCHEM1\ECD_L\methods\PL032219.M
 Quant Title : GC Extractables
 QLast Update : Fri Mar 22 13:40:08 2019
 Response via : Initial Calibration
 Integrator: ChemStation

Volume Inj. : 1 µl
 Signal #1 Phase : ZB-MR2 Signal #2 Phase: ZB-MR1
 Signal #1 Info : 30M x 0.32mm x0.2 Signal #2 Info : 30M x 0.32mm x0.5µm

Compound	RT#1	RT#2	Resp#1	Resp#2	ng/ml	ng/ml

System Monitoring Compounds						
1) SA Tetrachlo...	3.358	3.978	142.3E6	45654239	19.559	19.940
28) SA Decachlor...	8.037	9.033	130.5E6	38292358	15.514	16.516
Target Compounds						
2) A alpha-BHC	3.792	0.000	15797323	0	1.355	N.D. #
14) MA Endrin	5.863	0.000	10409508	0	1.105	N.D. #

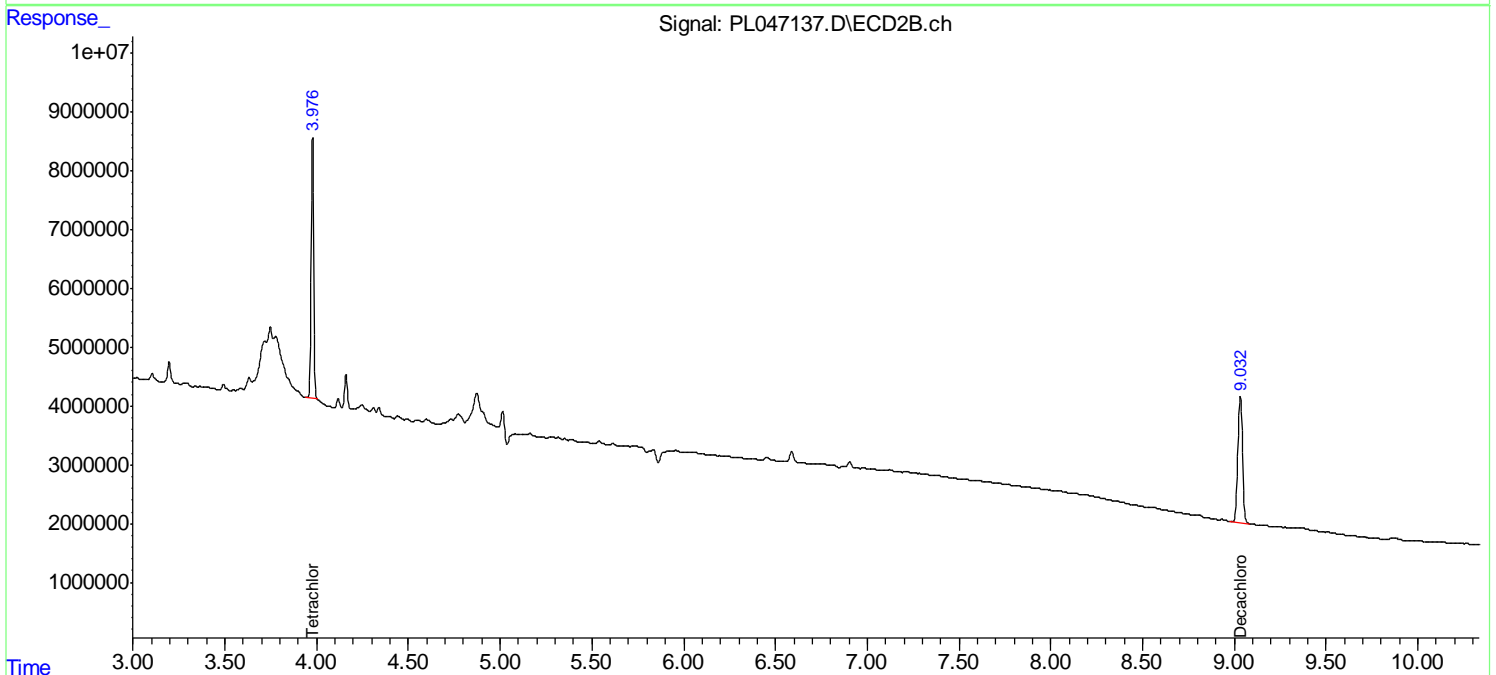
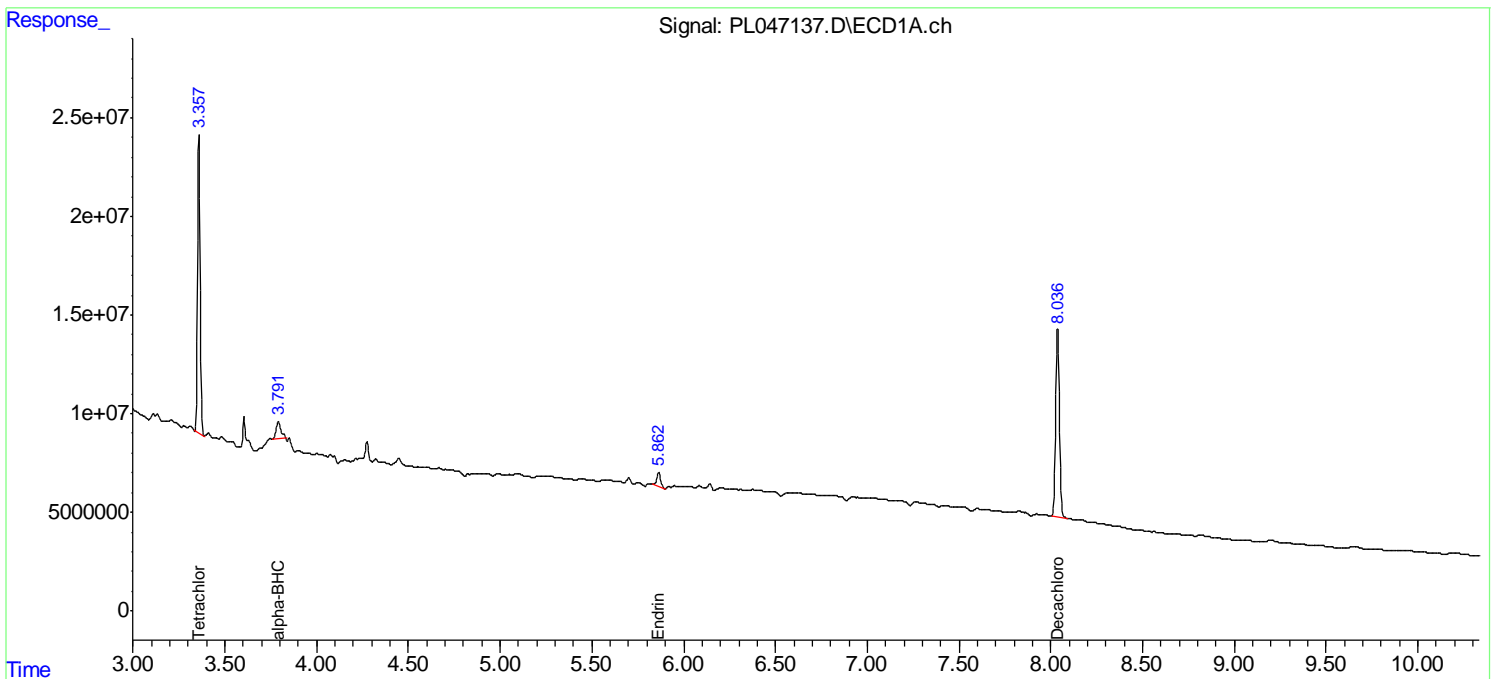
(f)=RT Delta > 1/2 Window (#)=Amounts differ by > 25% (m)=manual int.

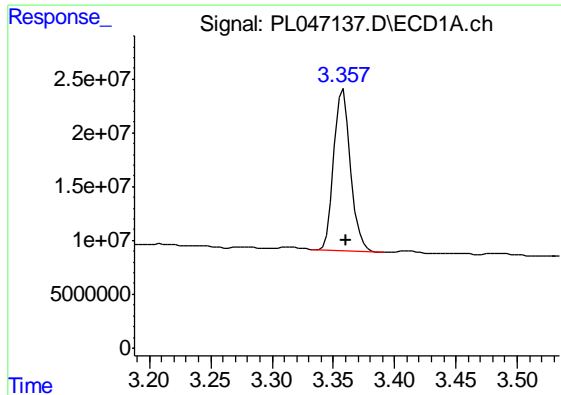
Data Path : Z:\pestpcbsrv\HPCHEM1\ECD_L\Data\PL040919\
 Data File : PL047137.D
 Signal(s) : Signal #1: ECD1A.ch Signal #2: ECD2B.ch
 Acq On : 09 Apr 2019 19:55
 Operator : AJ\SJ
 Sample : K2338-13
 Misc :
 ALS Vial : 28 Sample Multiplier: 1

Instrument :
 ECD_L
 ClientSampleId :
 TP-3-SHALLOW

Integration File signal 1: autoint1.e
 Integration File signal 2: autoint2.e
 Quant Time: Apr 10 01:06:43 2019
 Quant Method : Z:\pestpcbsrv\HPCHEM1\ECD_L\methods\PL032219.M
 Quant Title : GC Extractables
 QLast Update : Fri Mar 22 13:40:08 2019
 Response via : Initial Calibration
 Integrator: ChemStation

Volume Inj. : 1 µl
 Signal #1 Phase : ZB-MR2 Signal #2 Phase: ZB-MR1
 Signal #1 Info : 30M x 0.32mm x0.2 Signal #2 Info : 30M x 0.32mm x0.5µm

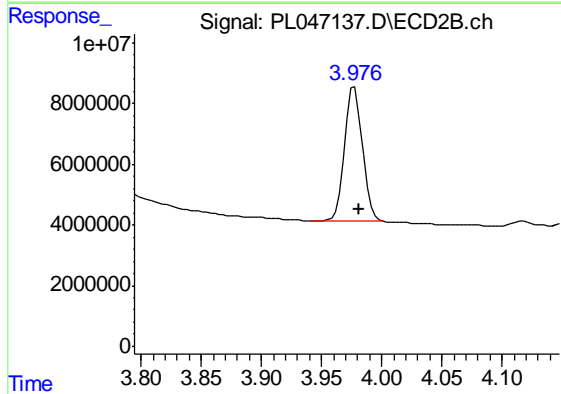




#1 Tetrachloro-m-xylene

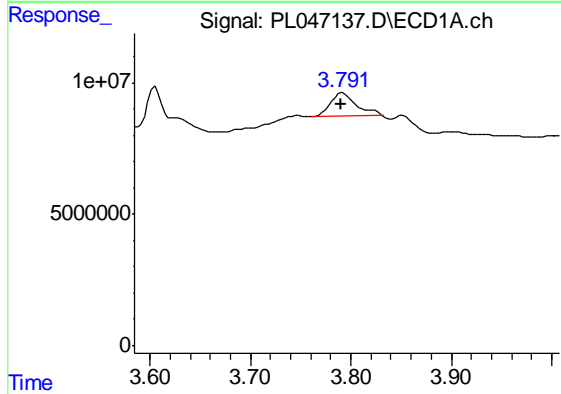
R.T.: 3.358 min
 Delta R.T.: -0.003 min
 Response: 142285593
 Conc: 19.56 ng/ml

Instrument :
 ECD_L
 ClientSampleId :
 TP-3-SHALLOW



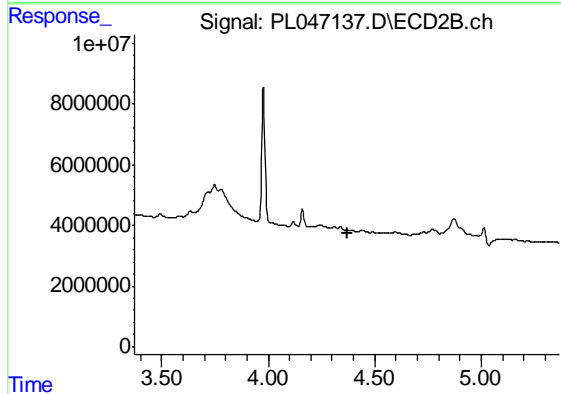
#1 Tetrachloro-m-xylene

R.T.: 3.978 min
 Delta R.T.: -0.003 min
 Response: 45654239
 Conc: 19.94 ng/ml



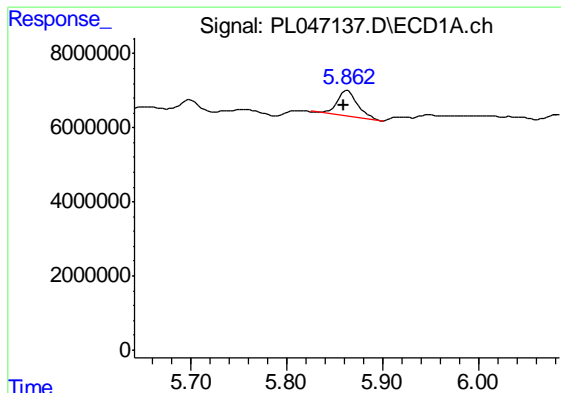
#2 alpha-BHC

R.T.: 3.792 min
 Delta R.T.: 0.002 min
 Response: 15797323
 Conc: 1.35 ng/ml



#2 alpha-BHC

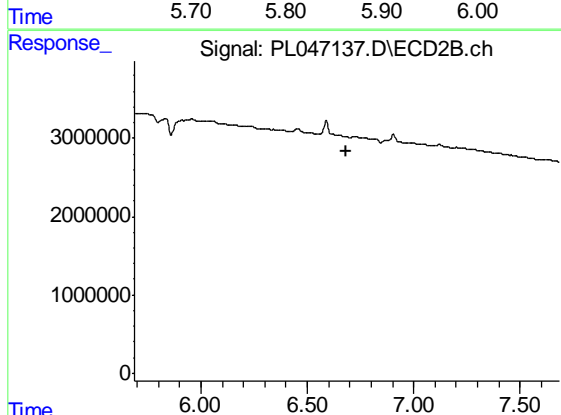
R.T.: 0.000 min
 Exp R.T. : 4.371 min
 Response: 0
 Conc: N.D.



#14 Endrin

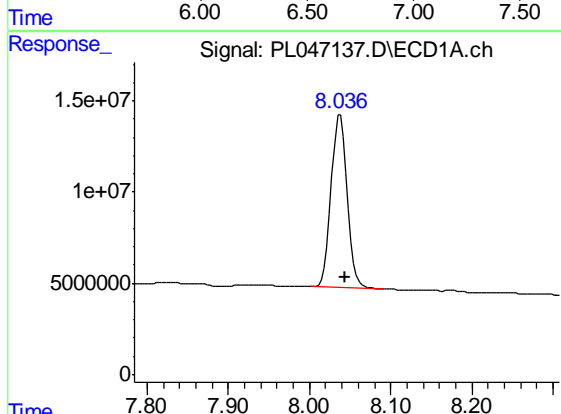
R.T.: 5.863 min
 Delta R.T.: 0.004 min
 Response: 10409508
 Conc: 1.11 ng/ml

Instrument :
 ECD_L
 ClientSampleId :
 TP-3-SHALLOW



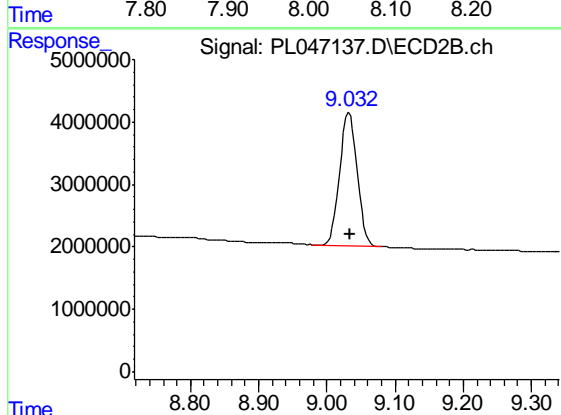
#14 Endrin

R.T.: 0.000 min
 Exp R.T. : 6.684 min
 Response: 0
 Conc: N.D.



#28 Decachlorobiphenyl

R.T.: 8.037 min
 Delta R.T.: -0.007 min
 Response: 130489417
 Conc: 15.51 ng/ml



#28 Decachlorobiphenyl

R.T.: 9.033 min
 Delta R.T.: -0.002 min
 Response: 38292358
 Conc: 16.52 ng/ml