

Data Path : Z:\pestpcbsrv\HPCHEM1\ECD_L\Data\PL041124\
 Data File : PL088990.D
 Signal(s) : Signal #1: ECD1A.ch Signal #2: ECD2B.ch
 Acq On : 10 Apr 2024 10:11
 Operator : AR\AJ
 Sample : P2004-07
 Misc :
 ALS Vial : 5 Sample Multiplier: 1

Instrument :
 ECD_L
 ClientSampleId :

Integration File signal 1: autoint1.e
 Integration File signal 2: autoint2.e
 Quant Time: Apr 12 06:19:33 2024
 Quant Method : Z:\pestpcbsrv\HPCHEM1\ECD_L\methods\PL041024CLP.M
 Quant Title : GC Extractables
 QLast Update : Fri Apr 12 05:24:54 2024
 Response via : Initial Calibration
 Integrator: ChemStation

Volume Inj. : 1 µl
 Signal #1 Phase : ZB-MR2 Signal #2 Phase: ZB-MR1
 Signal #1 Info : 30M x 0.32mm x0.2 Signal #2 Info : 30M x 0.32mm x 0.50µm

Compound	RT#1	RT#2	Resp#1	Resp#2	ng/ml	ng/ml
----------	------	------	--------	--------	-------	-------

System Monitoring Compounds

Target Compounds

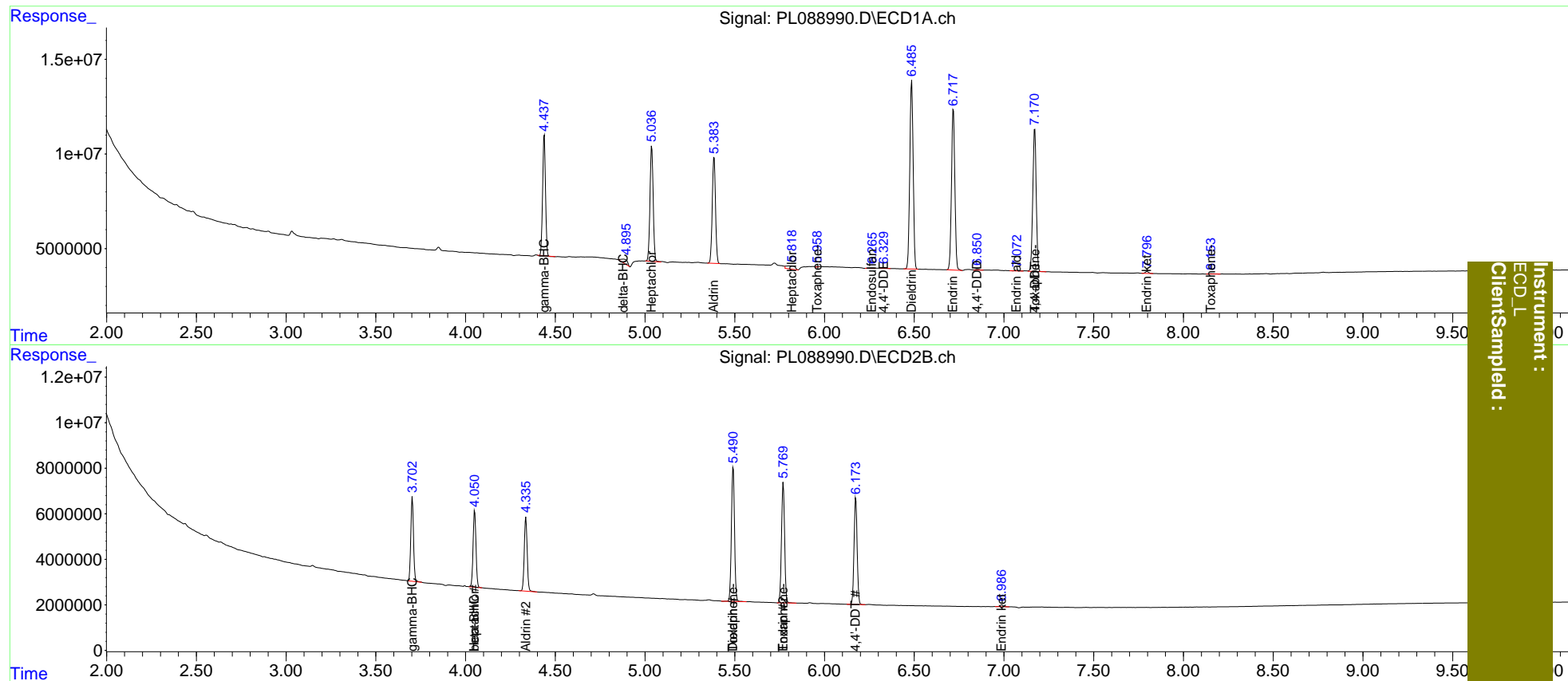
3) MA gamma-BHC...	4.438	3.703	71091900	38354259	18.479	18.698
4) MA Heptachlor	5.038	4.051	75752669	37699586	18.827	18.171
5) MB Aldrin	5.385	4.336	70488105	36823852	19.925	19.307
6) B beta-BHC	0.000	4.051f	0	37699586	N.D.	39.053
7) B delta-BHC	4.880	0.000	4867062	0	1.312	N.D. #
8) B Heptachlo...	5.815	0.000	5743102	0	1.651	N.D. #
9) A Endosulfan I	6.262f	0.000	728049	0	0.221	N.D. #
12) B 4,4'-DDE	6.330	0.000	721525	0	0.232	N.D. #
13) MA Dieldrin	6.486	5.491	130.1E6	70948675	37.751	36.751
14) MA Endrin	6.718	5.770	110.8E6	63217832	38.556	36.841
16) A 4,4'-DDD	6.851	0.000	915035	0	0.352	N.D. #
17) MA 4,4'-DDT	7.172	6.174	100.0E6	56330141	35.567	34.069
18) B Endrin al...	7.071	0.000	540143	0	0.236	N.D. #
21) B Endrin ke...	7.797	6.988	1395299	855219	0.465	0.467
22) Toxaphene-1	5.960	5.491f	168766	70948675	15.998	7172.698 #
23) Toxaphene-2	7.172	5.770f	100.0E6	63217832	1153.407	5588.952 #
26) Toxaphene-5	8.154f	0.000	386166	0	8.101	N.D. #

(f)=RT Delta > 1/2 Window (#)=Amounts differ by > 25% (m)=manual int.

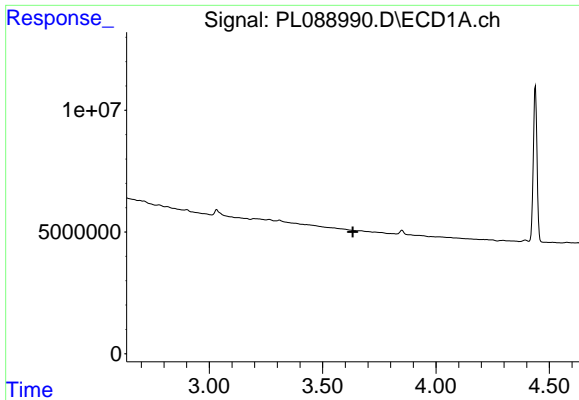
Data Path : Z:\pestpcbsrv\HPCHEM1\ECD_L\Data\PL041124\
 Data File : PL088990.D
 Signal(s) : Signal #1: ECD1A.ch Signal #2: ECD2B.ch
 Acq On : 10 Apr 2024 10:11
 Operator : AR\AJ
 Sample : P2004-07
 Misc :
 ALS Vial : 5 Sample Multiplier: 1

Integration File signal 1: autoint1.e
 Integration File signal 2: autoint2.e
 Quant Time: Apr 12 06:19:33 2024
 Quant Method : Z:\pestpcbsrv\HPCHEM1\ECD_L\methods\PL041024CLP.M
 Quant Title : GC Extractables
 QLast Update : Fri Apr 12 05:24:54 2024
 Response via : Initial Calibration
 Integrator: ChemStation

Volume Inj. : 1 µl
 Signal #1 Phase : ZB-MR2 Signal #2 Phase: ZB-MR1
 Signal #1 Info : 30M x 0.32mm x0.2 Signal #2 Info : 30M x 0.32mm x 0.50µm



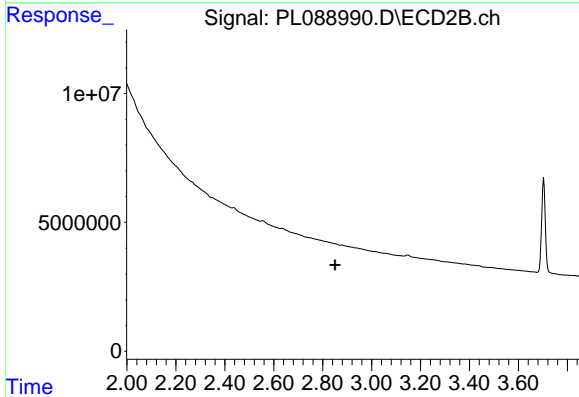
Instrument : ECD_L
 Client Sampled :



#1 Tetrachloro-m-xylene

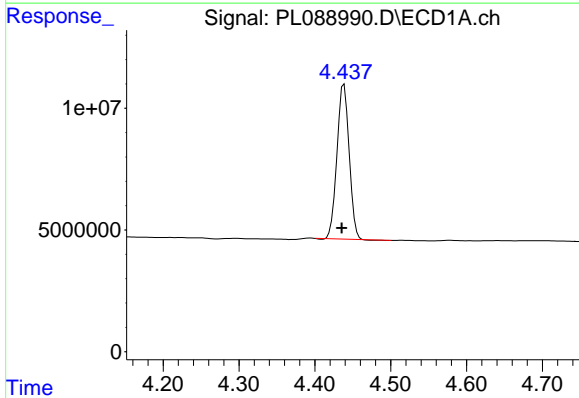
R.T.: 0.000 min
 Exp R.T. : 3.633 min
 Response: 0
 Conc: N.D.

Instrument :
 ECD_L
 ClientSampleId :



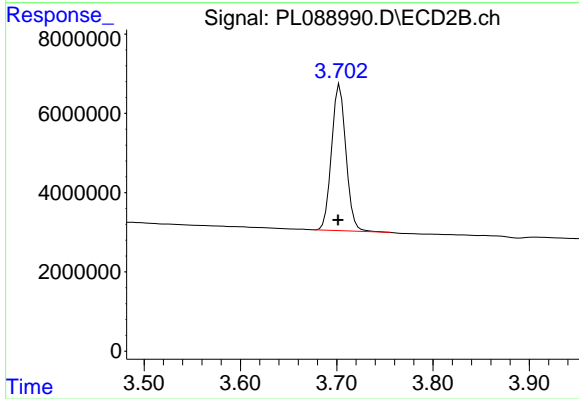
#1 Tetrachloro-m-xylene

R.T.: 0.000 min
 Exp R.T. : 2.851 min
 Response: 0
 Conc: N.D.



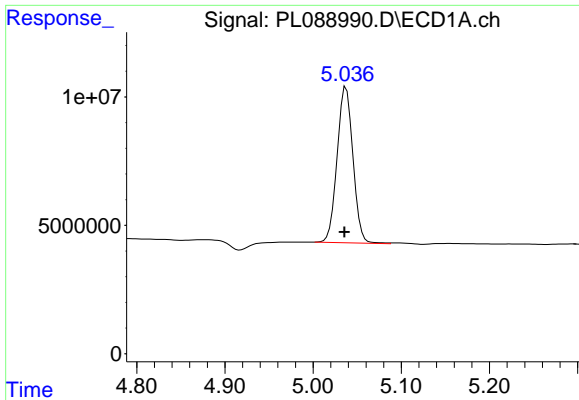
#3 gamma-BHC (Lindane)

R.T.: 4.438 min
 Delta R.T.: 0.003 min
 Response: 71091900
 Conc: 18.48 ng/ml



#3 gamma-BHC (Lindane)

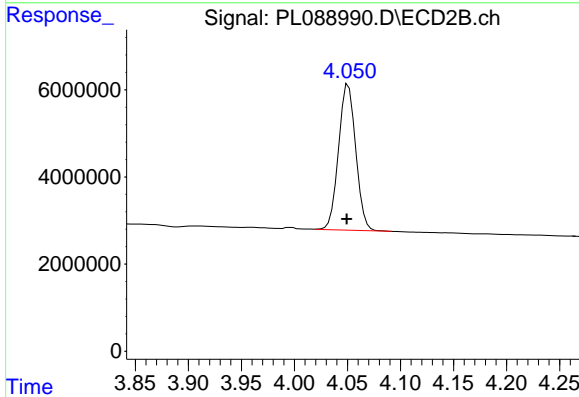
R.T.: 3.703 min
 Delta R.T.: 0.002 min
 Response: 38354259
 Conc: 18.70 ng/ml



#4 Heptachlor

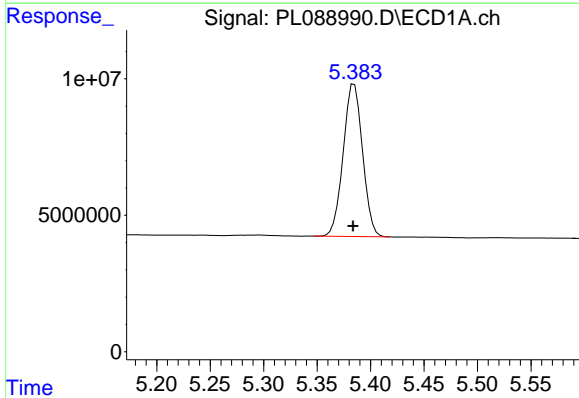
R.T.: 5.038 min
 Delta R.T.: 0.002 min
 Response: 75752669
 Conc: 18.83 ng/ml

Instrument :
 ECD_L
 ClientSampleId :



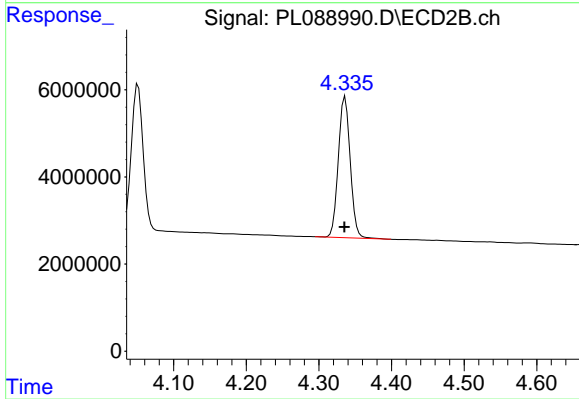
#4 Heptachlor

R.T.: 4.051 min
 Delta R.T.: 0.002 min
 Response: 37699586
 Conc: 18.17 ng/ml



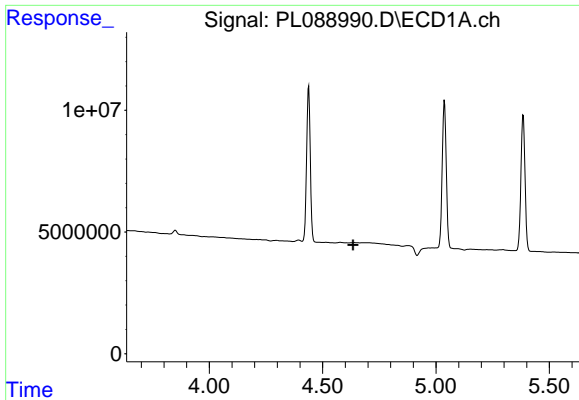
#5 Aldrin

R.T.: 5.385 min
 Delta R.T.: 0.001 min
 Response: 70488105
 Conc: 19.93 ng/ml



#5 Aldrin

R.T.: 4.336 min
 Delta R.T.: 0.000 min
 Response: 36823852
 Conc: 19.31 ng/ml

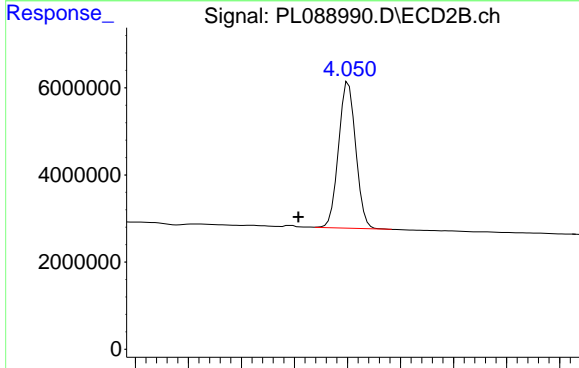


#6 beta-BHC

R.T.: 0.000 min
 Exp R.T.: 4.634 min
 Response: 0
 Conc: N.D.

Instrument :
 ECD_L
 ClientSampleId :

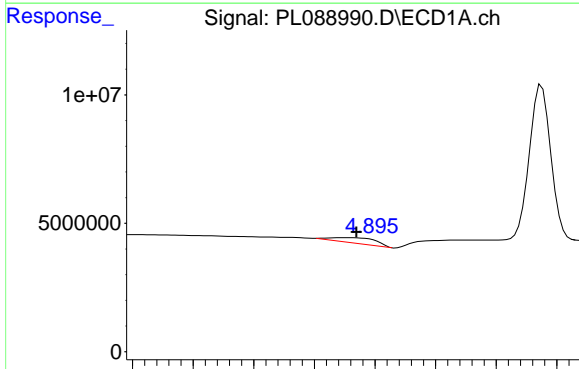
Time



#6 beta-BHC

R.T.: 4.051 min
 Delta R.T.: 0.047 min
 Response: 37699586
 Conc: 39.05 ng/ml

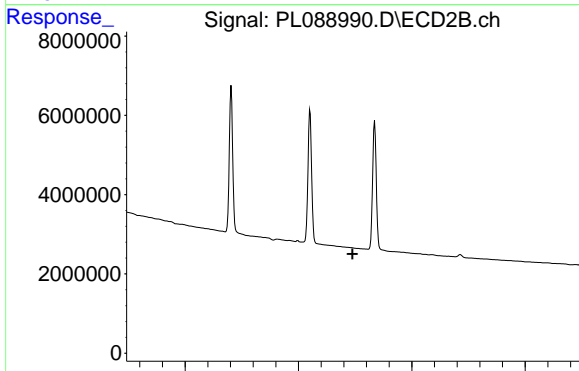
Time



#7 delta-BHC

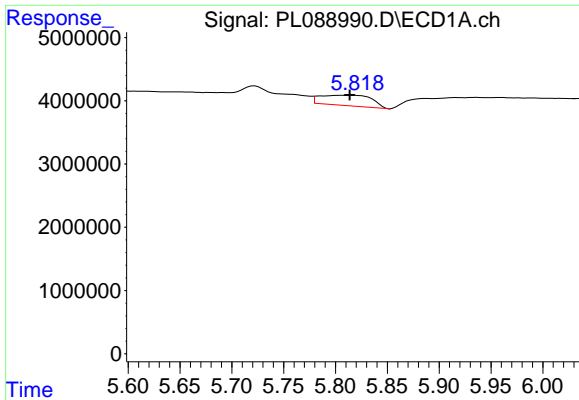
R.T.: 4.880 min
 Delta R.T.: -0.005 min
 Response: 4867062
 Conc: 1.31 ng/ml

Time



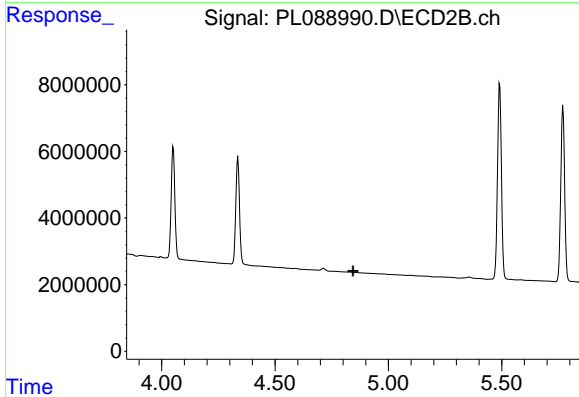
#7 delta-BHC

R.T.: 0.000 min
 Exp R.T.: 4.239 min
 Response: 0
 Conc: N.D.

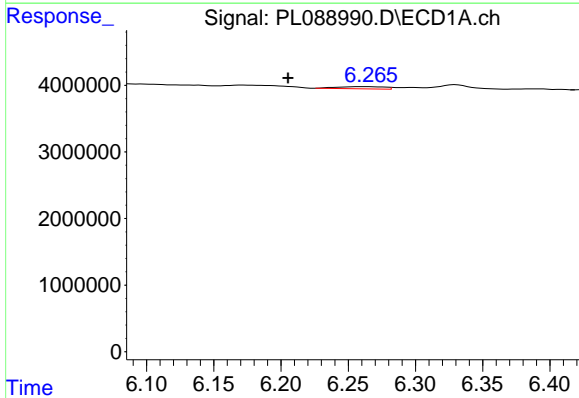


#8 Heptachlor epoxide
 R.T.: 5.815 min
 Delta R.T.: 0.002 min
 Response: 5743102
 Conc: 1.65 ng/ml

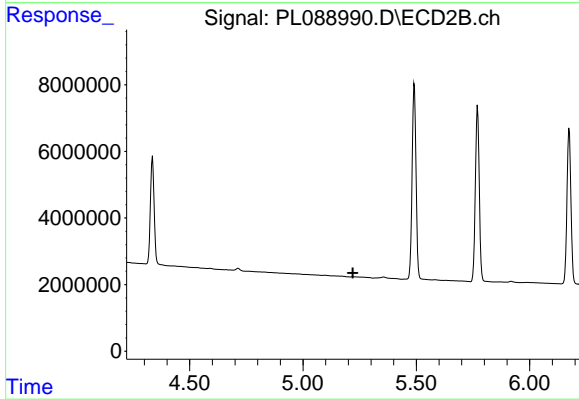
Instrument :
 ECD_L
 ClientSampleId :



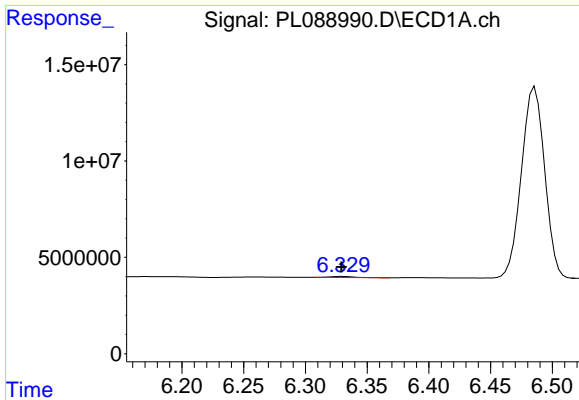
#8 Heptachlor epoxide
 R.T.: 0.000 min
 Exp R.T. : 4.844 min
 Response: 0
 Conc: N.D.



#9 Endosulfan I
 R.T.: 6.262 min
 Delta R.T.: 0.057 min
 Response: 728049
 Conc: 0.22 ng/ml



#9 Endosulfan I
 R.T.: 0.000 min
 Exp R.T. : 5.220 min
 Response: 0
 Conc: N.D.

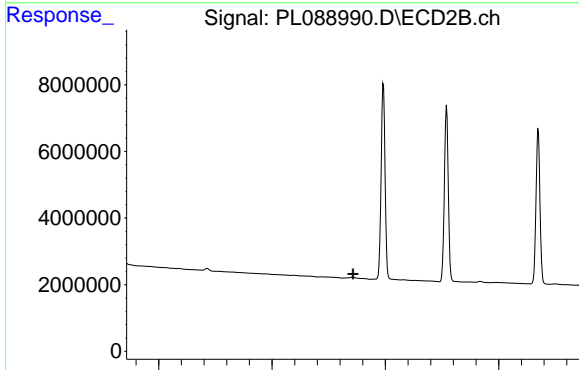


#12 4,4'-DDE

R.T.: 6.330 min
 Delta R.T.: 0.000 min
 Response: 721525
 Conc: 0.23 ng/ml

Instrument :
 ECD_L
 ClientSampleId :

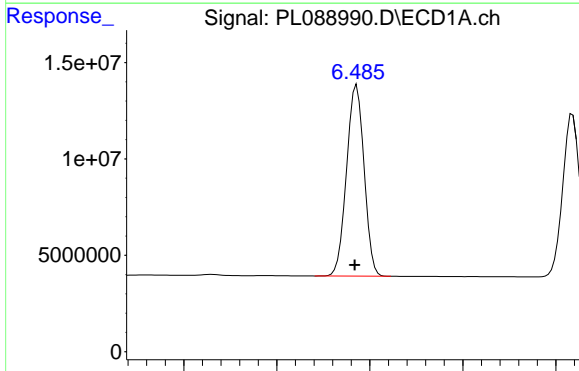
Time 6.20 6.25 6.30 6.35 6.40 6.45 6.50



#12 4,4'-DDE

R.T.: 0.000 min
 Exp R.T. : 5.357 min
 Response: 0
 Conc: N.D.

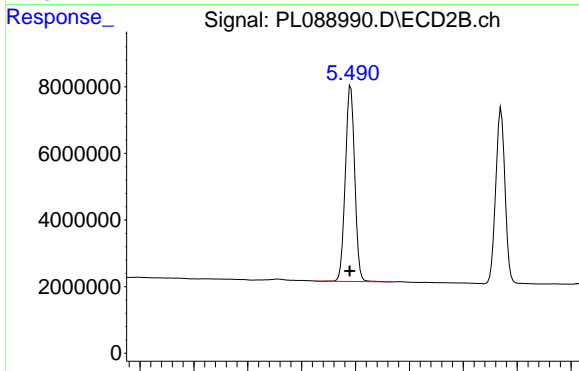
Time 4.50 5.00 5.50 6.00



#13 Dieldrin

R.T.: 6.486 min
 Delta R.T.: 0.002 min
 Response: 130104512
 Conc: 37.75 ng/ml

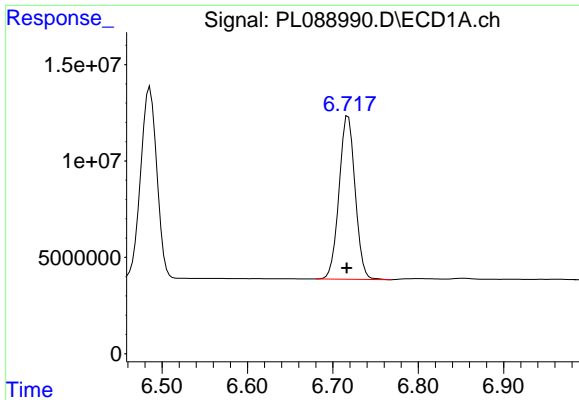
Time 6.30 6.40 6.50 6.60 6.70



#13 Dieldrin

R.T.: 5.491 min
 Delta R.T.: 0.002 min
 Response: 70948675
 Conc: 36.75 ng/ml

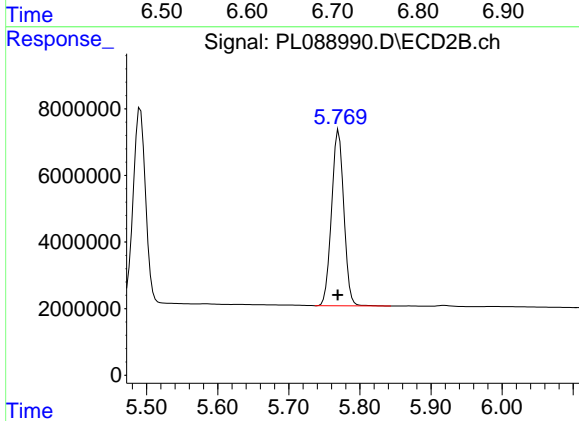
Time 5.10 5.20 5.30 5.40 5.50 5.60 5.70 5.80



#14 Endrin

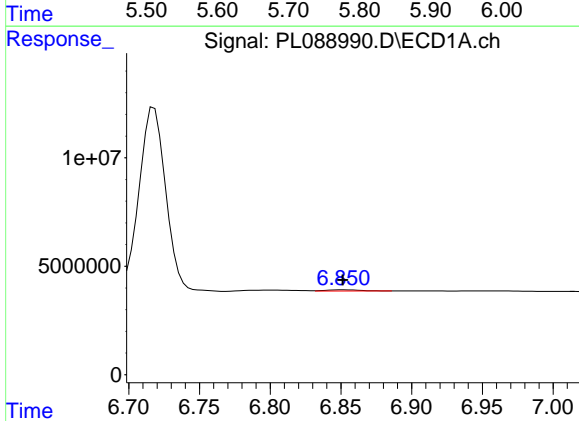
R.T.: 6.718 min
 Delta R.T.: 0.002 min
 Response: 110799844
 Conc: 38.56 ng/ml

Instrument :
 ECD_L
 ClientSampleId :



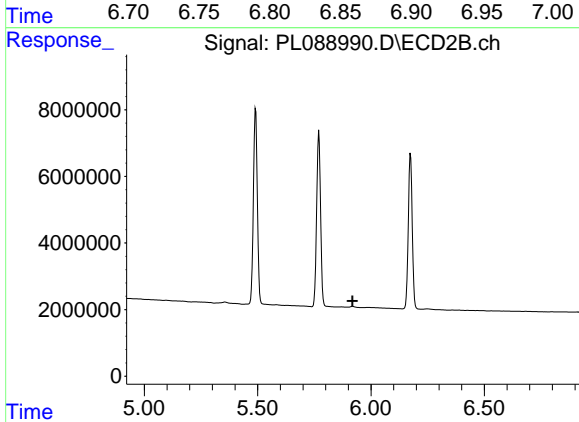
#14 Endrin

R.T.: 5.770 min
 Delta R.T.: 0.001 min
 Response: 63217832
 Conc: 36.84 ng/ml



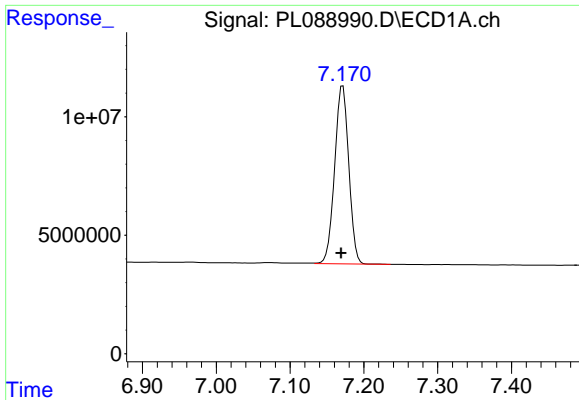
#16 4,4'-DDD

R.T.: 6.851 min
 Delta R.T.: 0.000 min
 Response: 915035
 Conc: 0.35 ng/ml



#16 4,4'-DDD

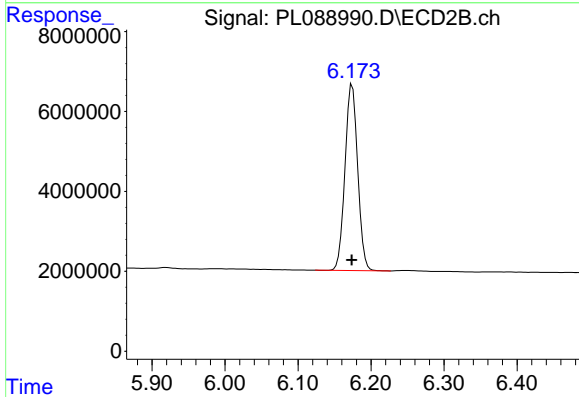
R.T.: 0.000 min
 Exp R.T. : 5.918 min
 Response: 0
 Conc: N.D.



#17 4,4'-DDT

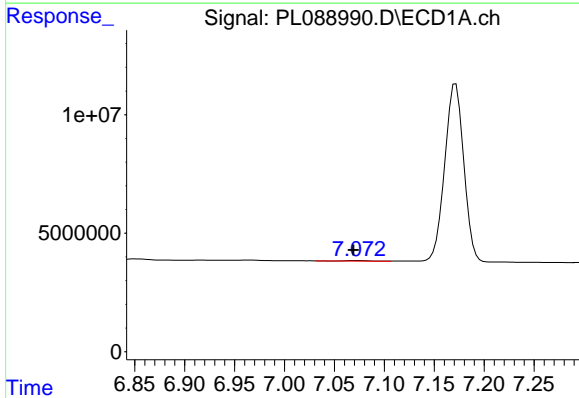
R.T.: 7.172 min
 Delta R.T.: 0.002 min
 Response: 100003172
 Conc: 35.57 ng/ml

Instrument :
 ECD_L
 ClientSampleId :



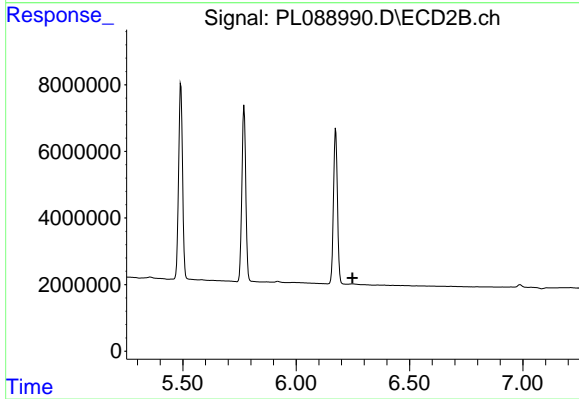
#17 4,4'-DDT

R.T.: 6.174 min
 Delta R.T.: 0.000 min
 Response: 56330141
 Conc: 34.07 ng/ml



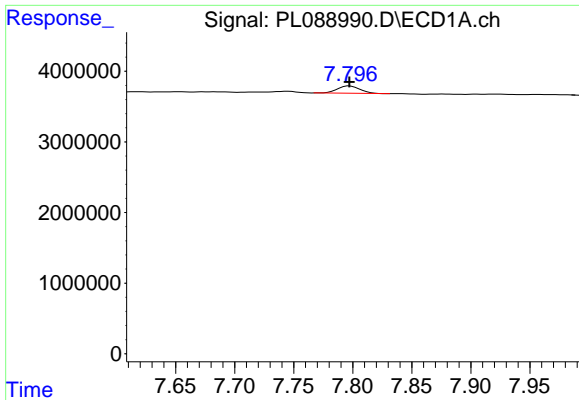
#18 Endrin aldehyde

R.T.: 7.071 min
 Delta R.T.: 0.002 min
 Response: 540143
 Conc: 0.24 ng/ml



#18 Endrin aldehyde

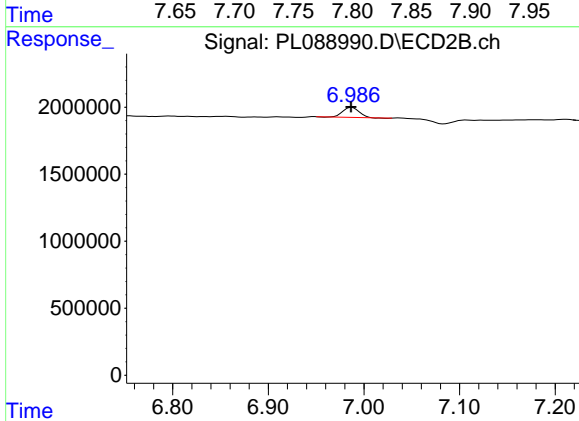
R.T.: 0.000 min
 Exp R.T. : 6.249 min
 Response: 0
 Conc: N.D.



#21 Endrin ketone

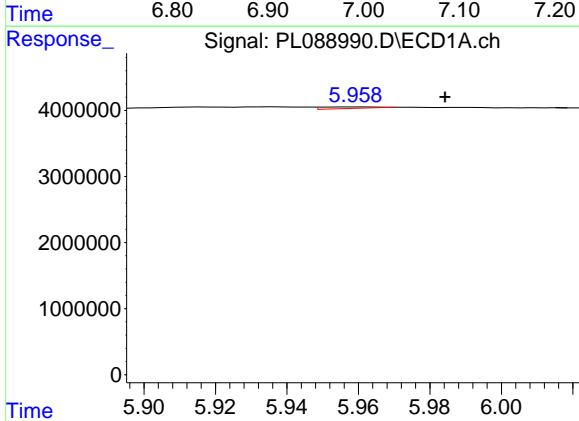
R.T.: 7.797 min
 Delta R.T.: 0.000 min
 Response: 1395299
 Conc: 0.47 ng/ml

Instrument :
 ECD_L
 ClientSampleId :



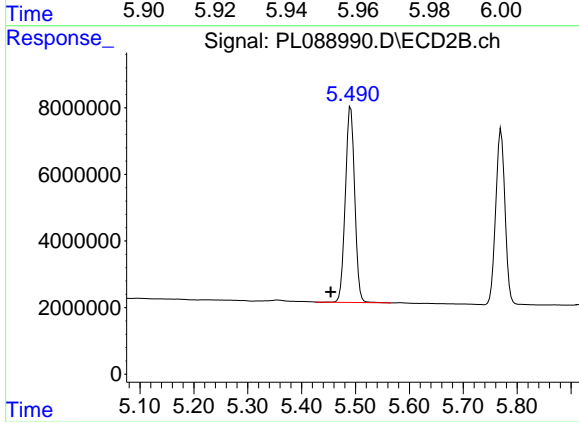
#21 Endrin ketone

R.T.: 6.988 min
 Delta R.T.: 0.001 min
 Response: 855219
 Conc: 0.47 ng/ml



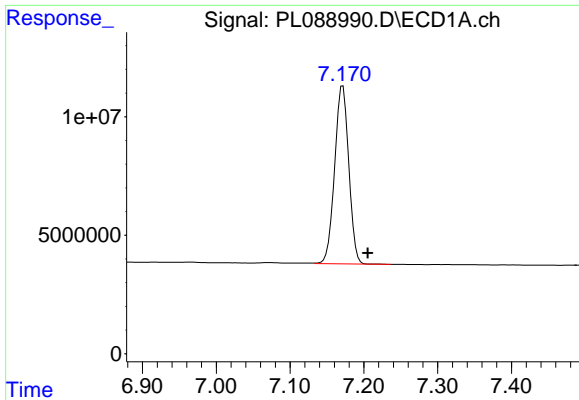
#22 Toxaphene-1

R.T.: 5.960 min
 Delta R.T.: -0.024 min
 Response: 168766
 Conc: 16.00 ng/ml



#22 Toxaphene-1

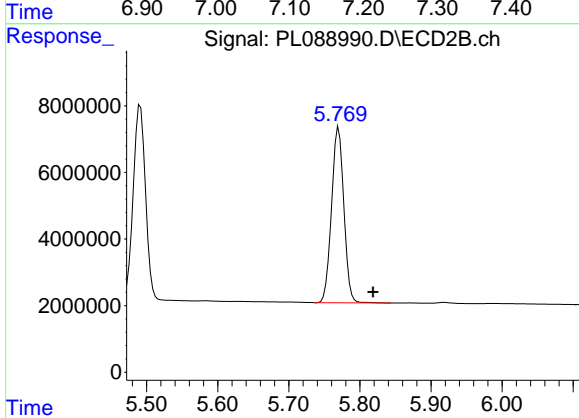
R.T.: 5.491 min
 Delta R.T.: 0.037 min
 Response: 70948675
 Conc: 7172.70 ng/ml



#23 Toxaphene-2

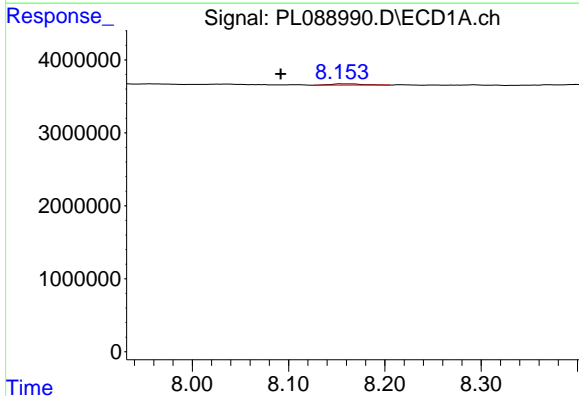
R.T.: 7.172 min
 Delta R.T.: -0.034 min
 Response: 100003172
 Conc: 1153.41 ng/ml

Instrument :
 ECD_L
 ClientSampleId :



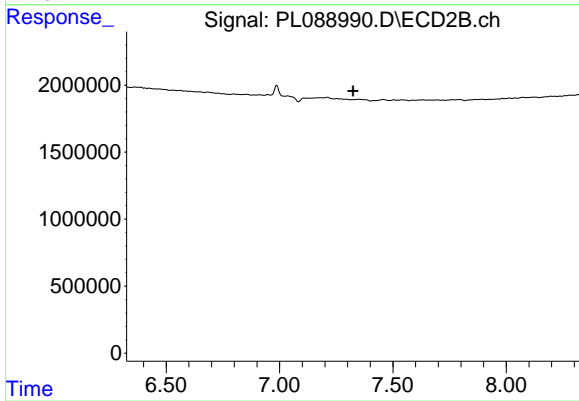
#23 Toxaphene-2

R.T.: 5.770 min
 Delta R.T.: -0.048 min
 Response: 63217832
 Conc: 5588.95 ng/ml



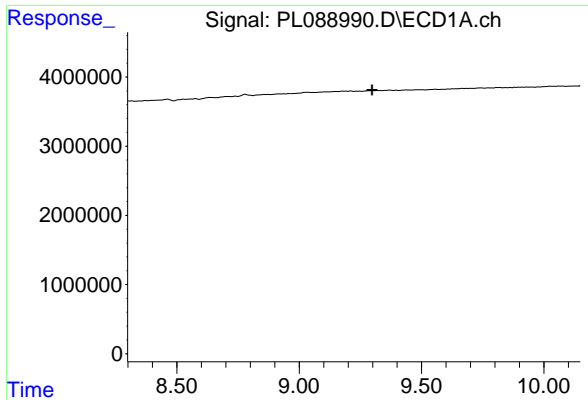
#26 Toxaphene-5

R.T.: 8.154 min
 Delta R.T.: 0.062 min
 Response: 386166
 Conc: 8.10 ng/ml



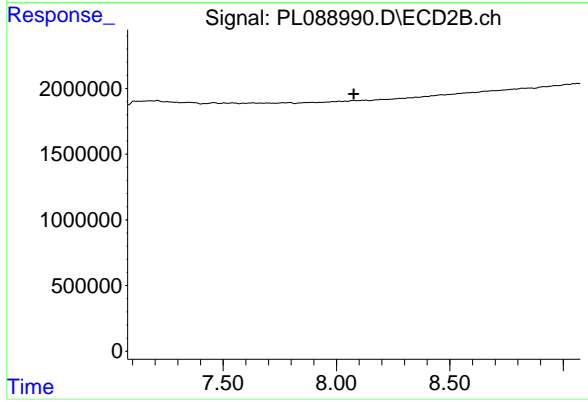
#26 Toxaphene-5

R.T.: 0.000 min
 Exp R.T. : 7.325 min
 Response: 0
 Conc: N.D.



#27 Decachlorobiphenyl
 R.T.: 0.000 min
 Exp R.T. : 9.298 min
 Response: 0
 Conc: N.D.

Instrument :
 ECD_L
 ClientSampleId :



#27 Decachlorobiphenyl
 R.T.: 0.000 min
 Exp R.T. : 8.077 min
 Response: 0
 Conc: N.D.