

Data Path : Z:\pestpcbsrv\HPCHEM1\ECD_L\Data\PL041219\
 Data File : PL047315.D
 Signal(s) : Signal #1: ECD1A.ch Signal #2: ECD2B.ch
 Acq On : 12 Apr 2019 12:45
 Operator : AJ\SJ
 Sample : I.BLK
 Misc :
 ALS Vial : 2 Sample Multiplier: 1

Instrument :
 ECD_L
 ClientSampleId :
 I.BLK

Integration File signal 1: autoint1.e
 Integration File signal 2: autoint2.e
 Quant Time: Apr 12 23:22:56 2019
 Quant Method : Z:\pestpcbsrv\HPCHEM1\ECD_L\methods\PL032219.M
 Quant Title : GC Extractables
 QLast Update : Fri Mar 22 13:40:08 2019
 Response via : Initial Calibration
 Integrator: ChemStation

Volume Inj. : 1 µl
 Signal #1 Phase : ZB-MR2 Signal #2 Phase: ZB-MR1
 Signal #1 Info : 30M x 0.32mm x0.2 Signal #2 Info : 30M x 0.32mm x0.5µm

Compound	RT#1	RT#2	Resp#1	Resp#2	ng/ml	ng/ml

System Monitoring Compounds						
1) SA Tetrachlo...	3.356	3.976	147.8E6	44830010	20.315	19.580
28) SA Decachlor...	8.033	9.027	190.2E6	54111947	22.610	23.339

Target Compounds

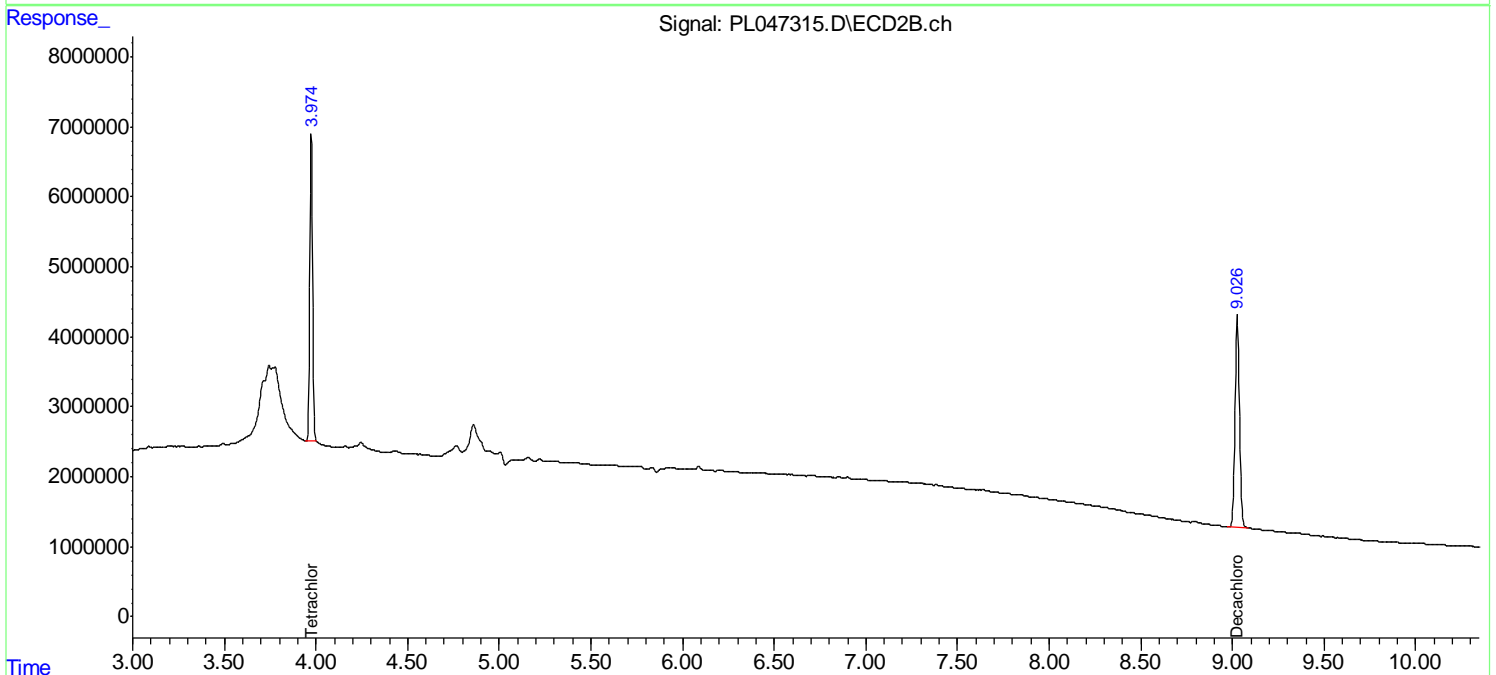
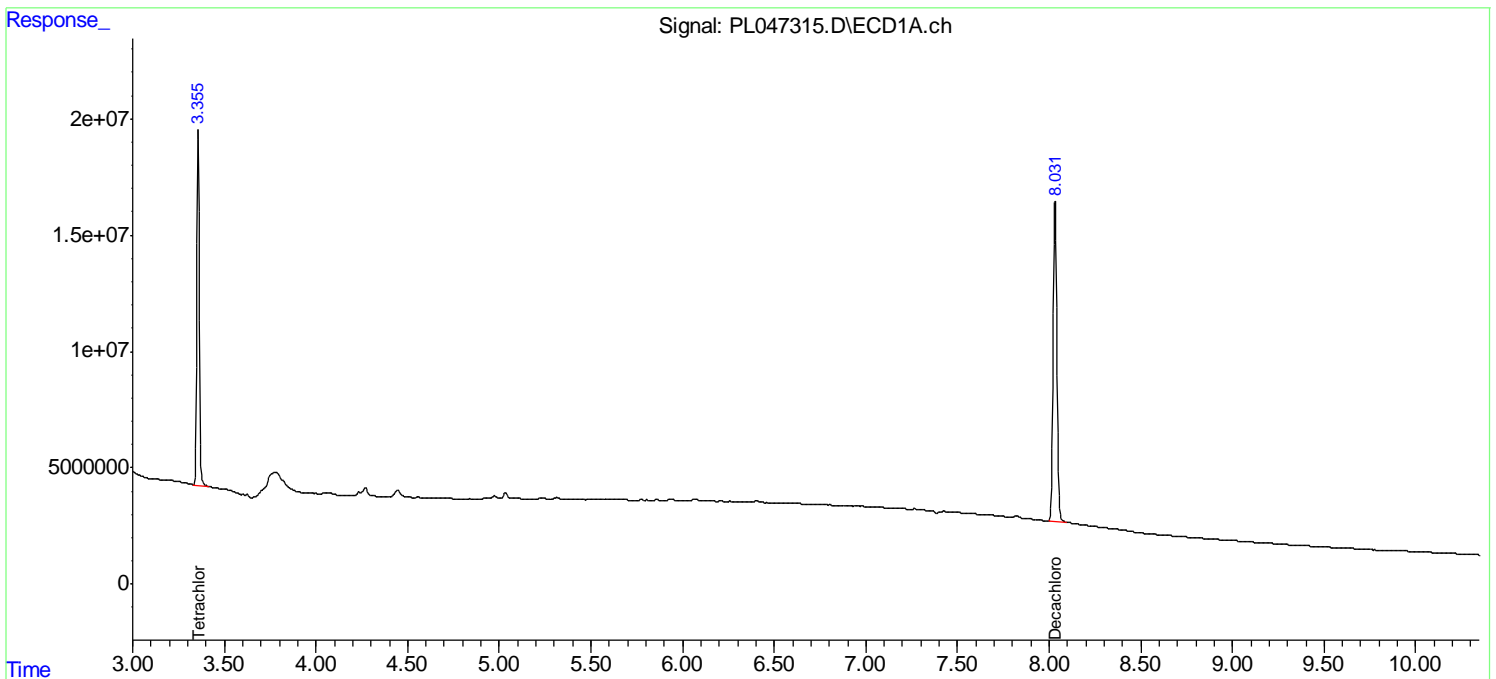
(f)=RT Delta > 1/2 Window (#)=Amounts differ by > 25% (m)=manual int.

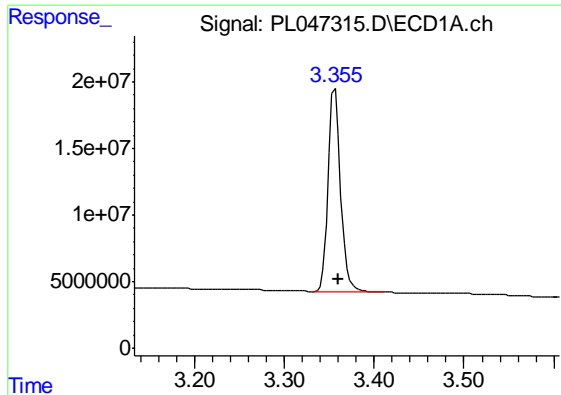
Data Path : Z:\pestpcbsrv\HPCHEM1\ECD_L\Data\PL041219\
Data File : PL047315.D
Signal(s) : Signal #1: ECD1A.ch Signal #2: ECD2B.ch
Acq On : 12 Apr 2019 12:45
Operator : AJ\SJ
Sample : I.BLK
Misc :
ALS Vial : 2 Sample Multiplier: 1

Instrument :
ECD_L
ClientSampleId :
I.BLK

Integration File signal 1: autoint1.e
Integration File signal 2: autoint2.e
Quant Time: Apr 12 23:22:56 2019
Quant Method : Z:\pestpcbsrv\HPCHEM1\ECD_L\methods\PL032219.M
Quant Title : GC Extractables
QLast Update : Fri Mar 22 13:40:08 2019
Response via : Initial Calibration
Integrator: ChemStation

Volume Inj. : 1 µl
Signal #1 Phase : ZB-MR2 Signal #2 Phase: ZB-MR1
Signal #1 Info : 30M x 0.32mm x0.2 Signal #2 Info : 30M x 0.32mm x0.5µm

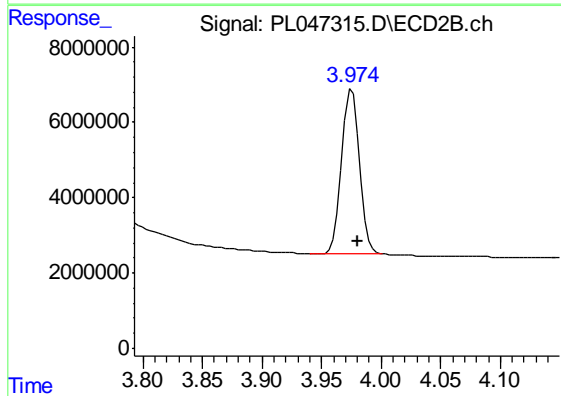




#1 Tetrachloro-m-xylene

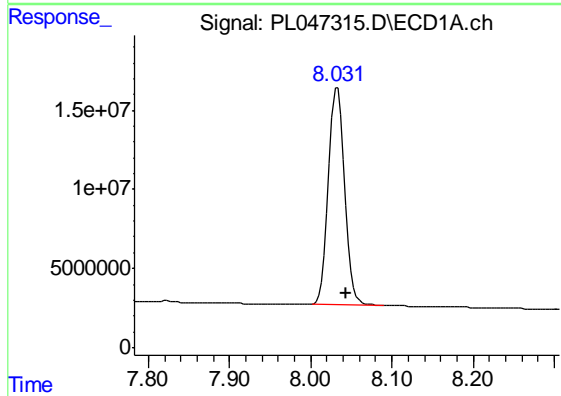
R.T.: 3.356 min
Delta R.T.: -0.005 min
Response: 147781570
Conc: 20.31 ng/ml

Instrument :
ECD_L
ClientSampleId :
I.BLK



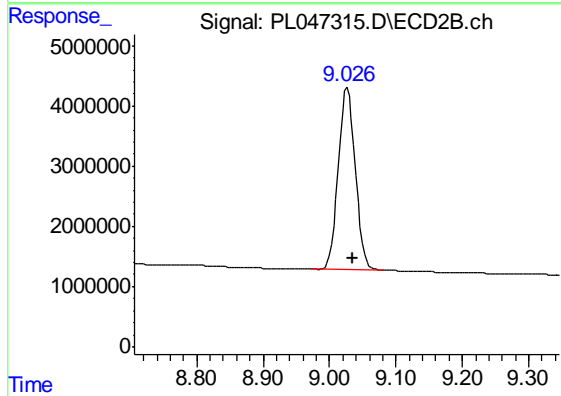
#1 Tetrachloro-m-xylene

R.T.: 3.976 min
Delta R.T.: -0.005 min
Response: 44830010
Conc: 19.58 ng/ml



#28 Decachlorobiphenyl

R.T.: 8.033 min
Delta R.T.: -0.011 min
Response: 190178027
Conc: 22.61 ng/ml



#28 Decachlorobiphenyl

R.T.: 9.027 min
Delta R.T.: -0.008 min
Response: 54111947
Conc: 23.34 ng/ml