

Data Path : Z:\pestpcbsrv\HPCHEM1\ECD_L\Data\PL041219\
 Data File : PL047319.D
 Signal(s) : Signal #1: ECD1A.ch Signal #2: ECD2B.ch
 Acq On : 12 Apr 2019 13:42
 Operator : AJ\SJ
 Sample : PEM
 Misc :
 ALS Vial : 3 Sample Multiplier: 1

Instrument :
 ECD_L
 ClientSampleId :
 PEM

Integration File signal 1: autoint1.e
 Integration File signal 2: autoint2.e
 Quant Time: Apr 12 23:23:45 2019
 Quant Method : Z:\pestpcbsrv\HPCHEM1\ECD_L\methods\PL032219.M
 Quant Title : GC Extractables
 QLast Update : Fri Mar 22 13:40:08 2019
 Response via : Initial Calibration
 Integrator: ChemStation

Volume Inj. : 1 µl
 Signal #1 Phase : ZB-MR2 Signal #2 Phase: ZB-MR1
 Signal #1 Info : 30M x 0.32mm x0.2 Signal #2 Info : 30M x 0.32mm x0.5µm

Compound	RT#1	RT#2	Resp#1	Resp#2	ng/ml	ng/ml

System Monitoring Compounds						
1) SA Tetrachlo...	3.357	3.976	157.4E6	47626579	21.635	20.801
28) SA Decachlor...	8.034	9.029	194.9E6	55178035	23.168	23.799
Target Compounds						
2) A alpha-BHC	3.787	4.366	114.8E6	28583896	9.841	8.896
3) MA gamma-BHC...	4.064	4.650	104.1E6	28473837	9.684	9.513
6) B beta-BHC	4.317	4.823	48127310	13137201	10.689	9.910
14) MA Endrin	5.852	6.677	498.8E6	121.2E6	52.952	50.733
16) A 4,4'-DDD	5.986	6.802	7083936	1992659	0.937	0.990
17) MA 4,4'-DDT	6.221	7.099	912.4E6	228.5E6	120.455	108.959
20) A Methoxychlor	6.765	7.558	1122.3E6	317.7E6	264.076	249.214
21) B Endrin ke...	6.988	7.702	11353066	2546478	1.228	1.025

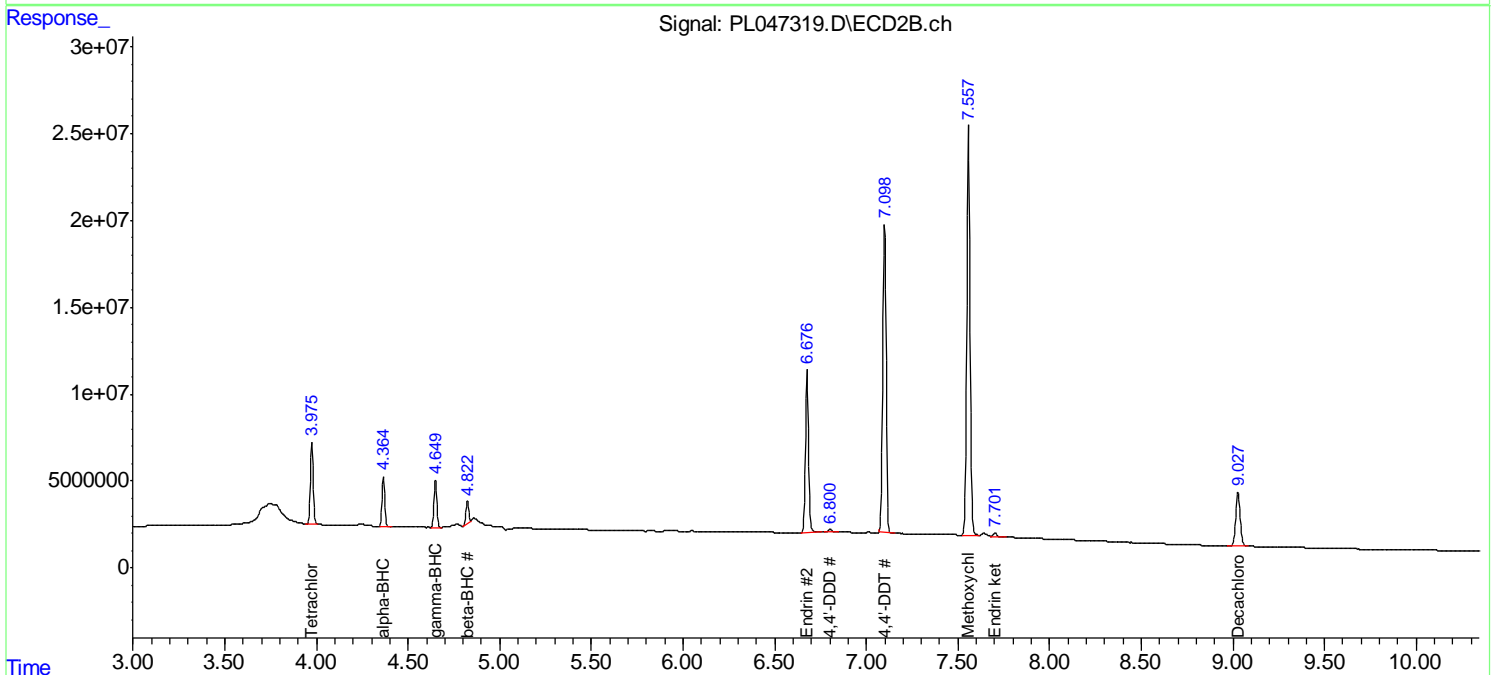
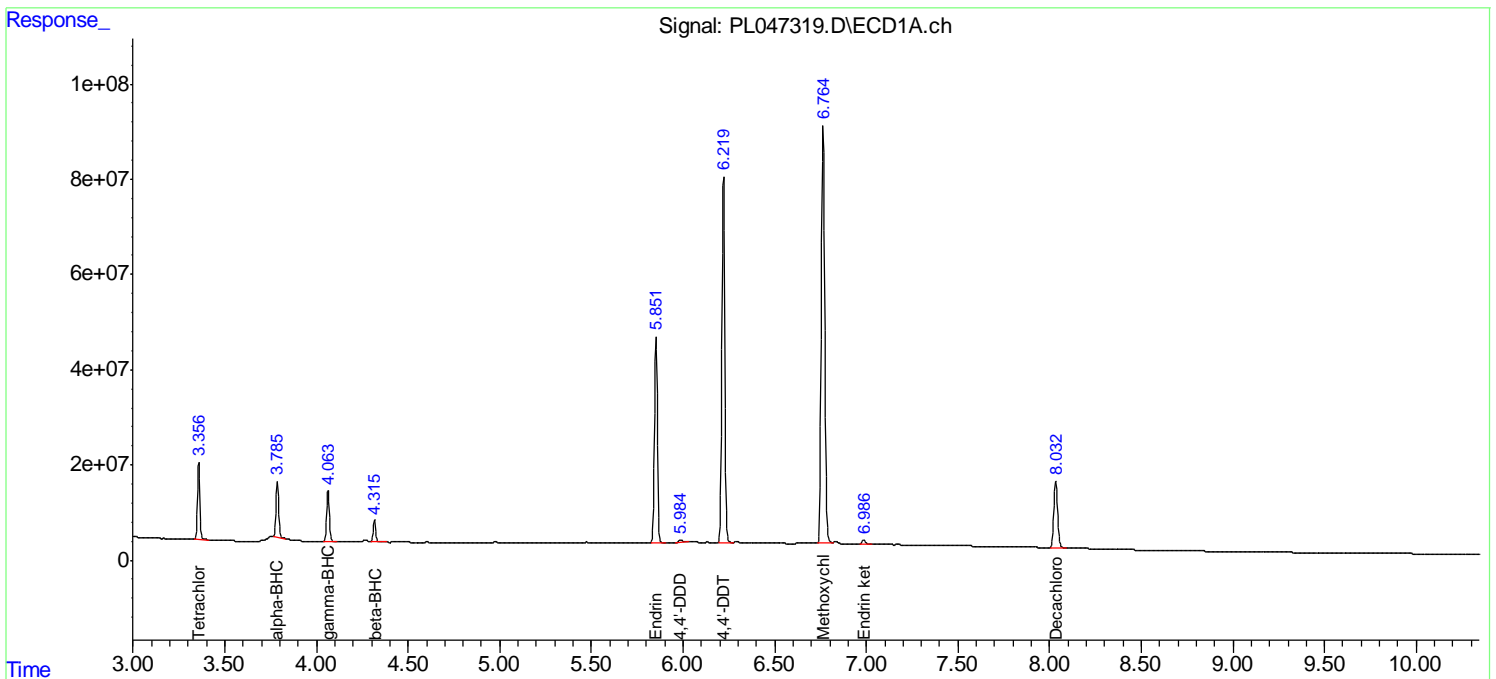
(f)=RT Delta > 1/2 Window (#)=Amounts differ by > 25% (m)=manual int.

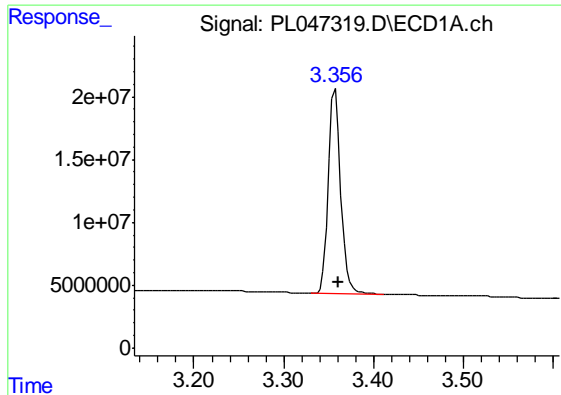
Data Path : Z:\pestpcbsrv\HPCHEM1\ECD_L\Data\PL041219\
 Data File : PL047319.D
 Signal(s) : Signal #1: ECD1A.ch Signal #2: ECD2B.ch
 Acq On : 12 Apr 2019 13:42
 Operator : AJ\SJ
 Sample : PEM
 Misc :
 ALS Vial : 3 Sample Multiplier: 1

Instrument :
 ECD_L
 ClientSampled :
 PEM

Integration File signal 1: autoint1.e
 Integration File signal 2: autoint2.e
 Quant Time: Apr 12 23:23:45 2019
 Quant Method : Z:\pestpcbsrv\HPCHEM1\ECD_L\methods\PL032219.M
 Quant Title : GC Extractables
 QLast Update : Fri Mar 22 13:40:08 2019
 Response via : Initial Calibration
 Integrator: ChemStation

Volume Inj. : 1 µl
 Signal #1 Phase : ZB-MR2 Signal #2 Phase: ZB-MR1
 Signal #1 Info : 30M x 0.32mm x0.2 Signal #2 Info : 30M x 0.32mm x0.5µm

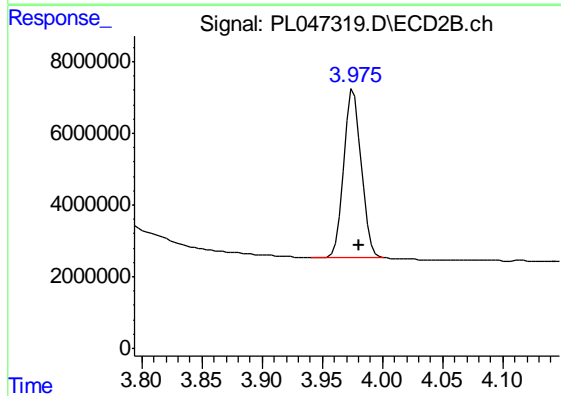




#1 Tetrachloro-m-xylene

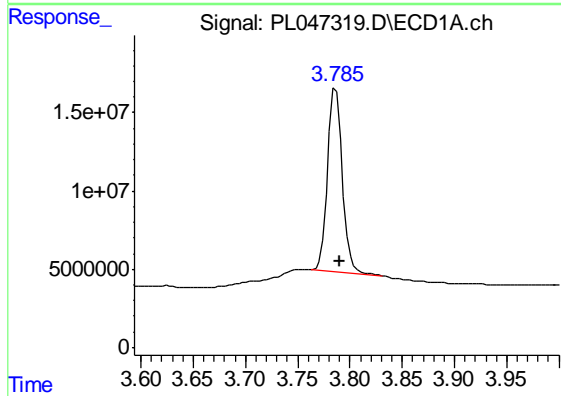
R.T.: 3.357 min
 Delta R.T.: -0.004 min
 Response: 157384383
 Conc: 21.63 ng/ml

Instrument :
 ECD_L
 ClientSampled :
 PEM



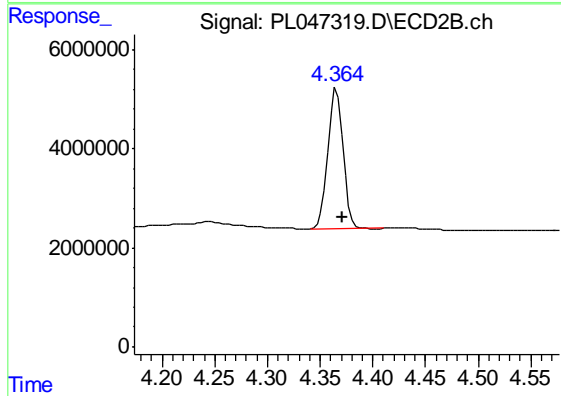
#1 Tetrachloro-m-xylene

R.T.: 3.976 min
 Delta R.T.: -0.004 min
 Response: 47626579
 Conc: 20.80 ng/ml



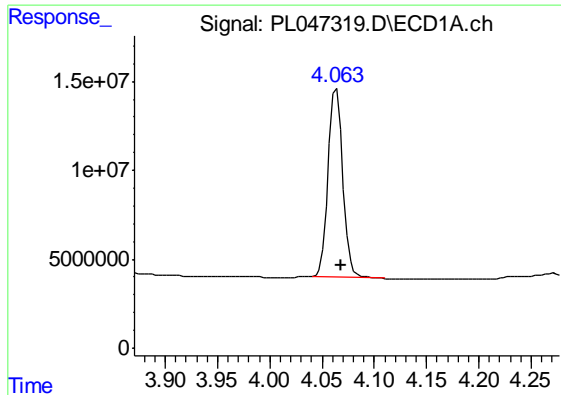
#2 alpha-BHC

R.T.: 3.787 min
 Delta R.T.: -0.004 min
 Response: 114761492
 Conc: 9.84 ng/ml



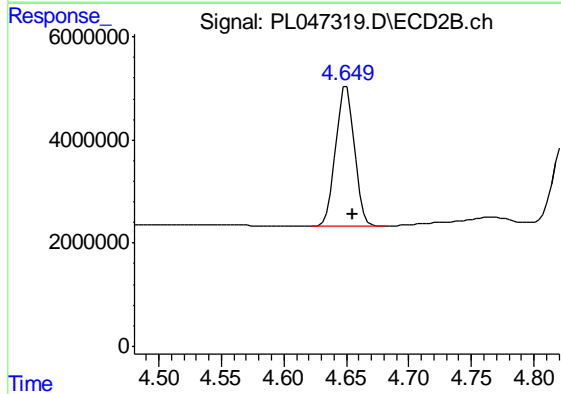
#2 alpha-BHC

R.T.: 4.366 min
 Delta R.T.: -0.005 min
 Response: 28583896
 Conc: 8.90 ng/ml

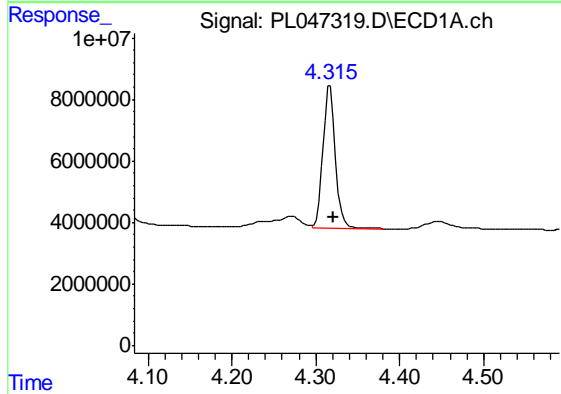


#3 gamma-BHC (Lindane)
 R.T.: 4.064 min
 Delta R.T.: -0.004 min
 Response: 104050006
 Conc: 9.68 ng/ml

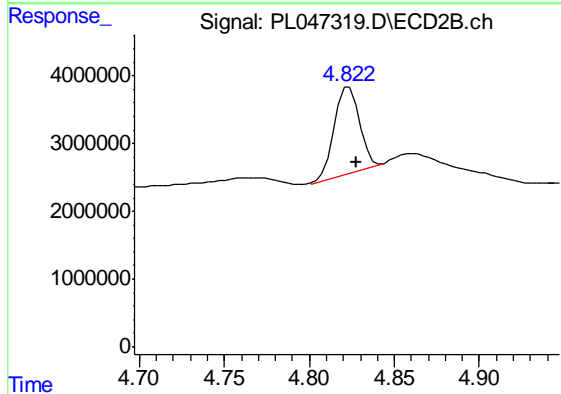
Instrument :
 ECD_L
 ClientSampleId :
 PEM



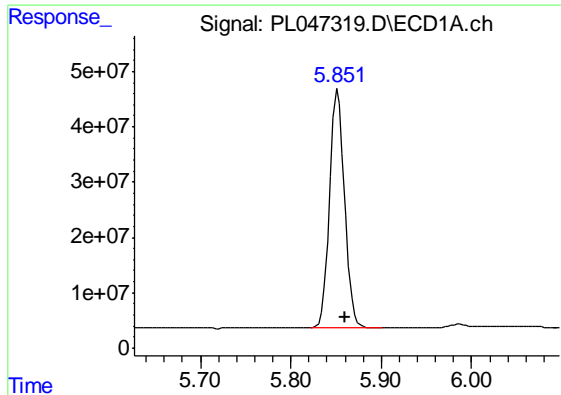
#3 gamma-BHC (Lindane)
 R.T.: 4.650 min
 Delta R.T.: -0.005 min
 Response: 28473837
 Conc: 9.51 ng/ml



#6 beta-BHC
 R.T.: 4.317 min
 Delta R.T.: -0.004 min
 Response: 48127310
 Conc: 10.69 ng/ml



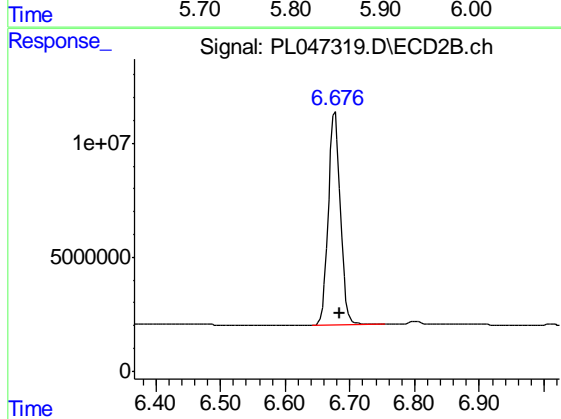
#6 beta-BHC
 R.T.: 4.823 min
 Delta R.T.: -0.004 min
 Response: 13137201
 Conc: 9.91 ng/ml



#14 Endrin

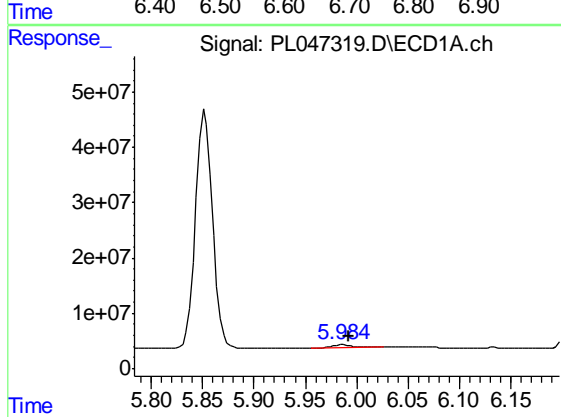
R.T.: 5.852 min
 Delta R.T.: -0.007 min
 Response: 498769089
 Conc: 52.95 ng/ml

Instrument :
 ECD_L
 ClientSampled :
 PEM



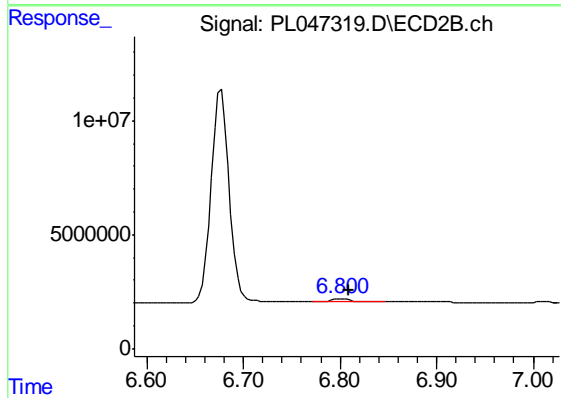
#14 Endrin

R.T.: 6.677 min
 Delta R.T.: -0.007 min
 Response: 121240776
 Conc: 50.73 ng/ml



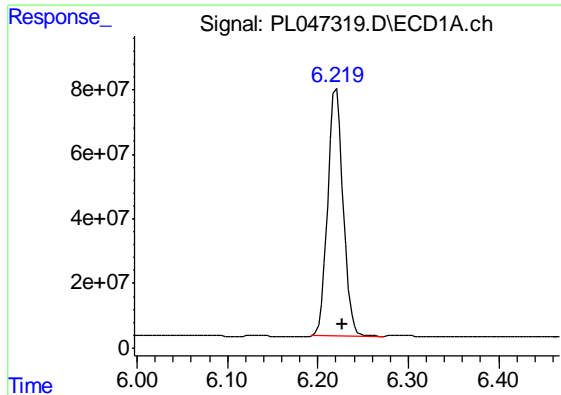
#16 4,4'-DDD

R.T.: 5.986 min
 Delta R.T.: -0.007 min
 Response: 7083936
 Conc: 0.94 ng/ml



#16 4,4'-DDD

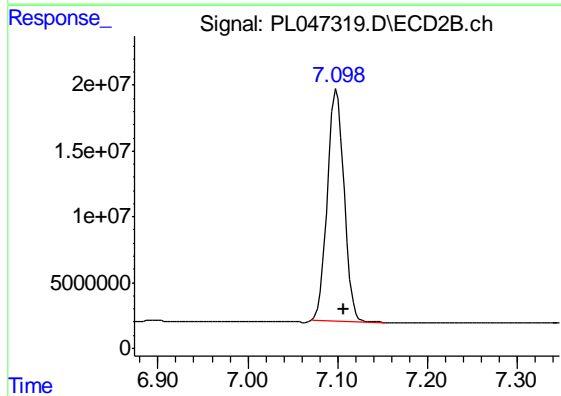
R.T.: 6.802 min
 Delta R.T.: -0.007 min
 Response: 1992659
 Conc: 0.99 ng/ml



#17 4,4'-DDT

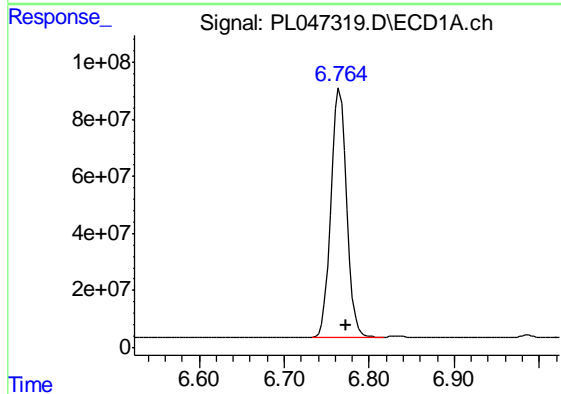
R.T.: 6.221 min
Delta R.T.: -0.007 min
Response: 912366231
Conc: 120.45 ng/ml

Instrument :
ECD_L
ClientSampled :
PEM



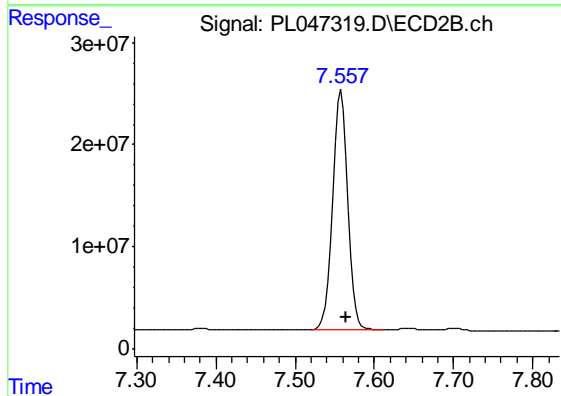
#17 4,4'-DDT

R.T.: 7.099 min
Delta R.T.: -0.008 min
Response: 228482294
Conc: 108.96 ng/ml



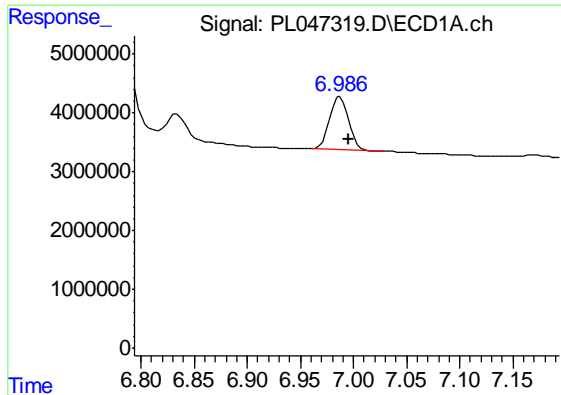
#20 Methoxychlor

R.T.: 6.765 min
Delta R.T.: -0.008 min
Response: 1122287679
Conc: 264.08 ng/ml



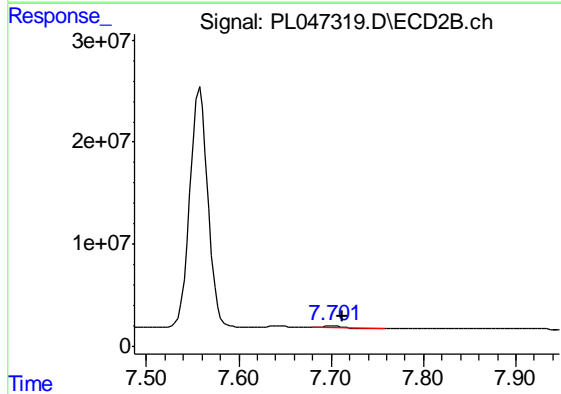
#20 Methoxychlor

R.T.: 7.558 min
Delta R.T.: -0.007 min
Response: 317692658
Conc: 249.21 ng/ml

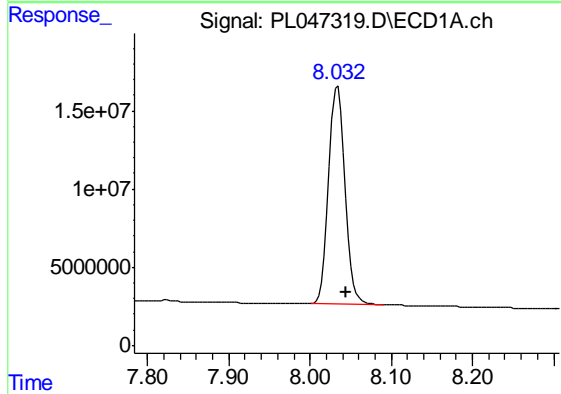


#21 Endrin ketone
 R.T.: 6.988 min
 Delta R.T.: -0.009 min
 Response: 11353066
 Conc: 1.23 ng/ml

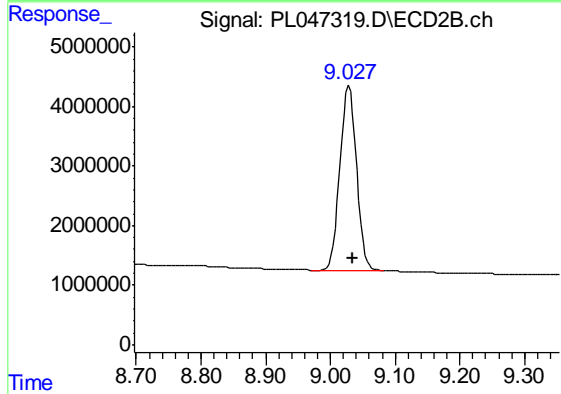
Instrument :
 ECD_L
 ClientSampleId :
 PEM



#21 Endrin ketone
 R.T.: 7.702 min
 Delta R.T.: -0.009 min
 Response: 2546478
 Conc: 1.02 ng/ml



#28 Decachlorobiphenyl
 R.T.: 8.034 min
 Delta R.T.: -0.010 min
 Response: 194866632
 Conc: 23.17 ng/ml



#28 Decachlorobiphenyl
 R.T.: 9.029 min
 Delta R.T.: -0.006 min
 Response: 55178035
 Conc: 23.80 ng/ml