

Data Path : Z:\pestpcbsrv\HPCHEM1\ECD_L\Data\PL041219\
 Data File : PL047341.D
 Signal(s) : Signal #1: ECD1A.ch Signal #2: ECD2B.ch
 Acq On : 12 Apr 2019 19:20
 Operator : AJ\SJ
 Sample : PB118856TB
 Misc :
 ALS Vial : 33 Sample Multiplier: 1

Instrument :
 ECD_L
 ClientSampleId :
 PB118856TB

Integration File signal 1: autoint1.e
 Integration File signal 2: autoint2.e
 Quant Time: Apr 12 23:30:27 2019
 Quant Method : Z:\pestpcbsrv\HPCHEM1\ECD_L\methods\PL032219.M
 Quant Title : GC Extractables
 QLast Update : Fri Mar 22 13:40:08 2019
 Response via : Initial Calibration
 Integrator: ChemStation

Volume Inj. : 1 µl
 Signal #1 Phase : ZB-MR2 Signal #2 Phase: ZB-MR1
 Signal #1 Info : 30M x 0.32mm x0.2 Signal #2 Info : 30M x 0.32mm x0.5µm

Compound	RT#1	RT#2	Resp#1	Resp#2	ng/ml	ng/ml
----------	------	------	--------	--------	-------	-------

 System Monitoring Compounds

1) SA Tetrachlo...	3.356	3.975	161.3E6	50822245	22.170	22.197
28) SA Decachlor...	8.030	9.024	200.4E6	58162901	23.827	25.087

Target Compounds

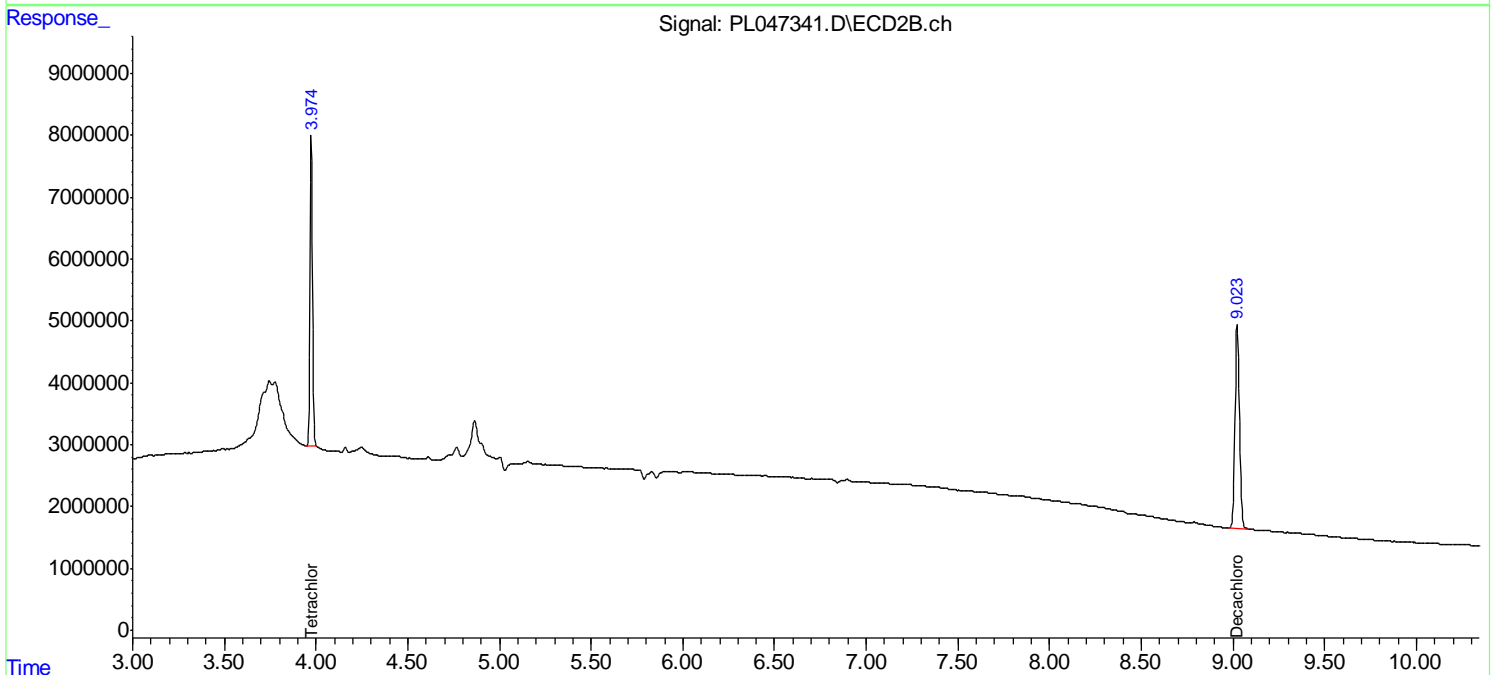
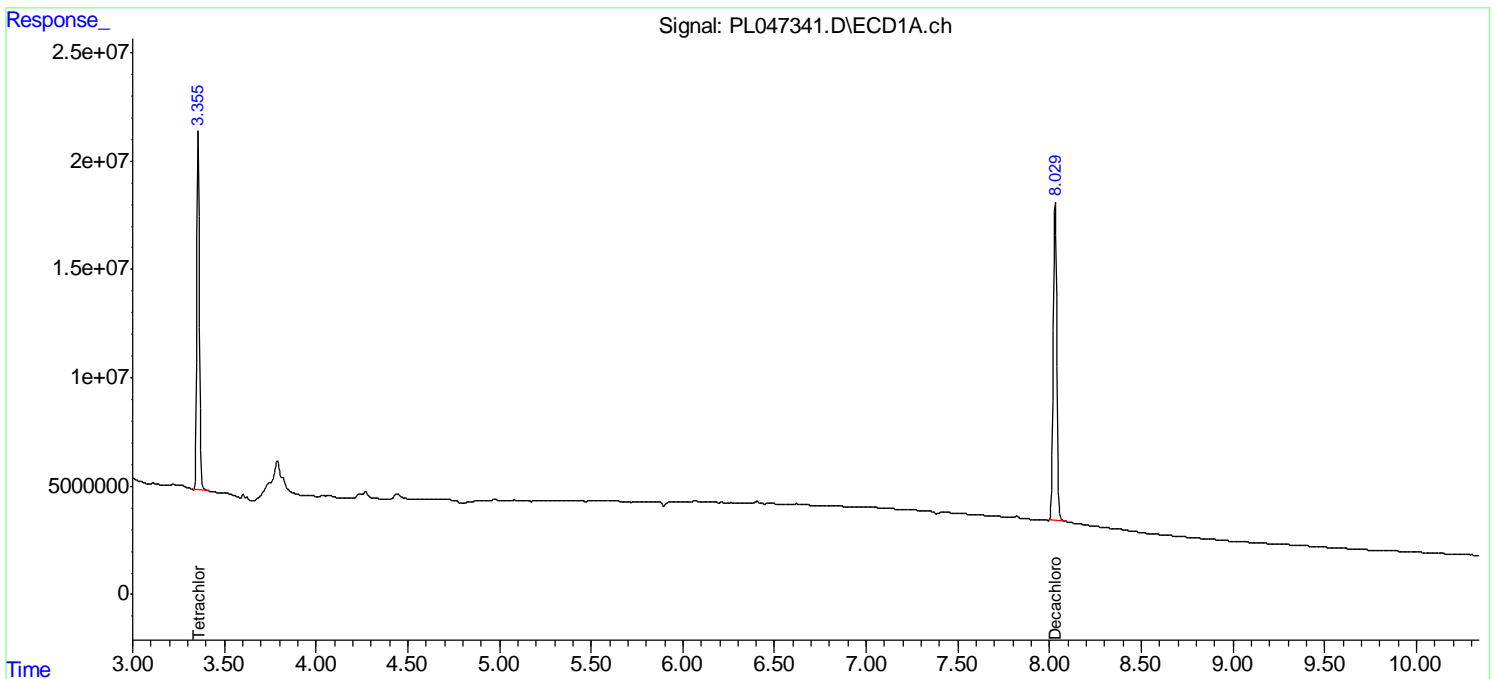
(f)=RT Delta > 1/2 Window (#)=Amounts differ by > 25% (m)=manual int.

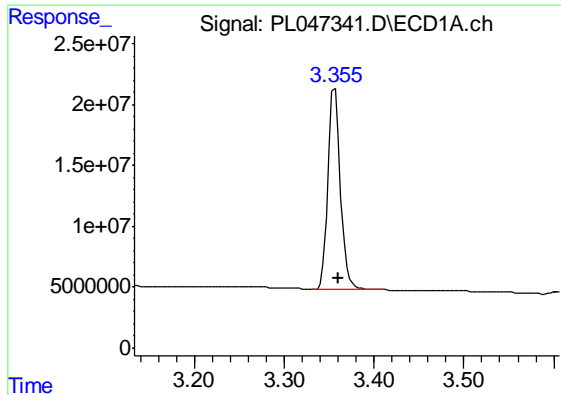
Data Path : Z:\pestpcbsrv\HPCHEM1\ECD_L\Data\PL041219\
 Data File : PL047341.D
 Signal(s) : Signal #1: ECD1A.ch Signal #2: ECD2B.ch
 Acq On : 12 Apr 2019 19:20
 Operator : AJ\SJ
 Sample : PB118856TB
 Misc :
 ALS Vial : 33 Sample Multiplier: 1

Instrument :
 ECD_L
 ClientSampleId :
 PB118856TB

Integration File signal 1: autoint1.e
 Integration File signal 2: autoint2.e
 Quant Time: Apr 12 23:30:27 2019
 Quant Method : Z:\pestpcbsrv\HPCHEM1\ECD_L\methods\PL032219.M
 Quant Title : GC Extractables
 QLast Update : Fri Mar 22 13:40:08 2019
 Response via : Initial Calibration
 Integrator: ChemStation

Volume Inj. : 1 µl
 Signal #1 Phase : ZB-MR2 Signal #2 Phase: ZB-MR1
 Signal #1 Info : 30M x 0.32mm x0.2 Signal #2 Info : 30M x 0.32mm x0.5µm

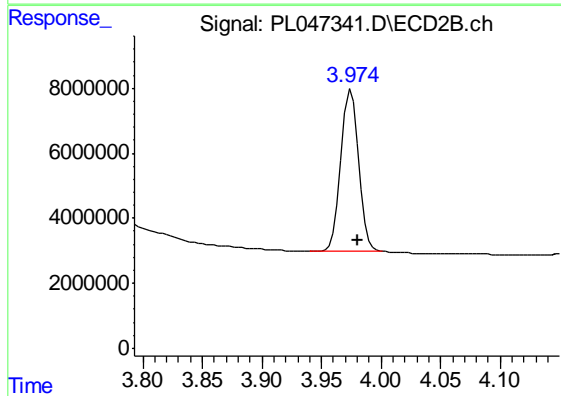




#1 Tetrachloro-m-xylene

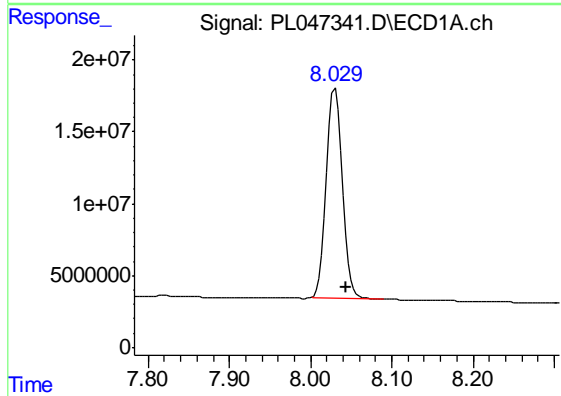
R.T.: 3.356 min
 Delta R.T.: -0.005 min
 Response: 161276805
 Conc: 22.17 ng/ml

Instrument :
 ECD_L
 ClientSampleId :
 PB118856TB



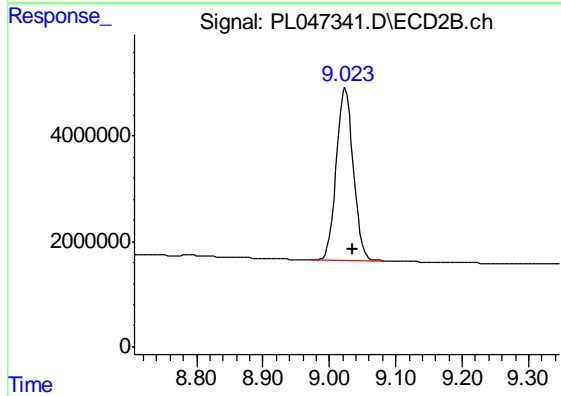
#1 Tetrachloro-m-xylene

R.T.: 3.975 min
 Delta R.T.: -0.006 min
 Response: 50822245
 Conc: 22.20 ng/ml



#28 Decachlorobiphenyl

R.T.: 8.030 min
 Delta R.T.: -0.014 min
 Response: 200407734
 Conc: 23.83 ng/ml



#28 Decachlorobiphenyl

R.T.: 9.024 min
 Delta R.T.: -0.011 min
 Response: 58162901
 Conc: 25.09 ng/ml