

Data Path : Z:\pestpcbsrv\HPCHEM1\ECD_L\Data\PL041221\
 Data File : PL066028.D
 Signal(s) : Signal #1: ECD1A.ch Signal #2: ECD2B.ch
 Acq On : 12 Apr 2021 15:26
 Operator : AR\AJ
 Sample : PSTDCCC050
 Misc :
 ALS Vial : 4 Sample Multiplier: 1

Instrument :
 ECD_L
 ClientSampleId :
 PSTDCCC050

Integration File signal 1: autoint1.e
 Integration File signal 2: autoint2.e
 Quant Time: Apr 13 08:31:17 2021
 Quant Method : Z:\pestpcbsrv\HPCHEM1\ECD_L\methods\PL040921.M
 Quant Title : GC Extractables
 QLast Update : Sat Apr 10 02:10:31 2021
 Response via : Initial Calibration
 Integrator: ChemStation

Volume Inj. : 1 µl
 Signal #1 Phase : ZB-MR2 Signal #2 Phase: ZB-MR1
 Signal #1 Info : 30M x 0.32mm x0.2 Signal #2 Info : 30M x 0.32mm x0.5µm

	Compound	RT#1	RT#2	Resp#1	Resp#2	ng/ml	ng/ml

System Monitoring Compounds							
1)	SA Tetrachlo...	3.449	4.155	111.3E6	144.9E6	45.831	52.554
28)	SA Decachlor...	8.176	9.357	99491847	104.3E6	46.120	55.022
Target Compounds							
2)	A alpha-BHC	3.884	4.560	177.1E6	201.8E6	46.334	55.294
3)	MA gamma-BHC...	4.164	4.853	166.5E6	187.4E6	47.352	54.050
4)	MA Heptachlor	4.464	5.370	168.8E6	177.8E6	45.566	51.623
5)	MB Aldrin	4.709	5.682	163.3E6	166.0E6	47.241	54.854
6)	B beta-BHC	4.412	5.029	74745553	91031726	43.384	51.576
7)	B delta-BHC	4.613	5.253	164.8E6	175.9E6	46.089	52.560
8)	B Heptachlo...	5.148	6.076	152.9E6	152.1E6	46.903	53.547
9)	A Endosulfan I	5.482	6.441	146.0E6	137.7E6	47.557	54.262
10)	B gamma-Chl...	5.373	6.313	154.9E6	150.8E6	47.105	54.405
11)	B alpha-Chl...	5.431	6.386	153.8E6	148.4E6	47.373	54.140
12)	B 4,4'-DDE	5.597	6.541	147.0E6	136.2E6	48.137	54.675
13)	MA Dieldrin	5.723	6.702	156.9E6	138.3E6	47.007	53.966
14)	MA Endrin	5.977	6.925	135.2E6	100.5E6	45.865	53.658
15)	B Endosulfa...	6.248	7.139	137.3E6	113.2E6	46.606	53.131
16)	A 4,4'-DDD	6.107	7.041	136.5E6	113.8E6	47.778	54.576
17)	MA 4,4'-DDT	6.347	7.343	127.4E6	99321856	45.187	52.409
18)	B Endrin al...	6.416	7.265	106.5E6	91603134	45.994	52.800
19)	B Endosulfa...	6.627	7.489	139.7E6	113.0E6	45.402	52.691
20)	A Methoxychlor	6.893	7.803	69022508	53353605	44.043	52.916
21)	B Endrin ke...	7.111	7.970	150.7E6	123.5E6	46.731	54.680
22)	Mirex	7.302	8.426	119.0E6	89983984	46.045	53.418

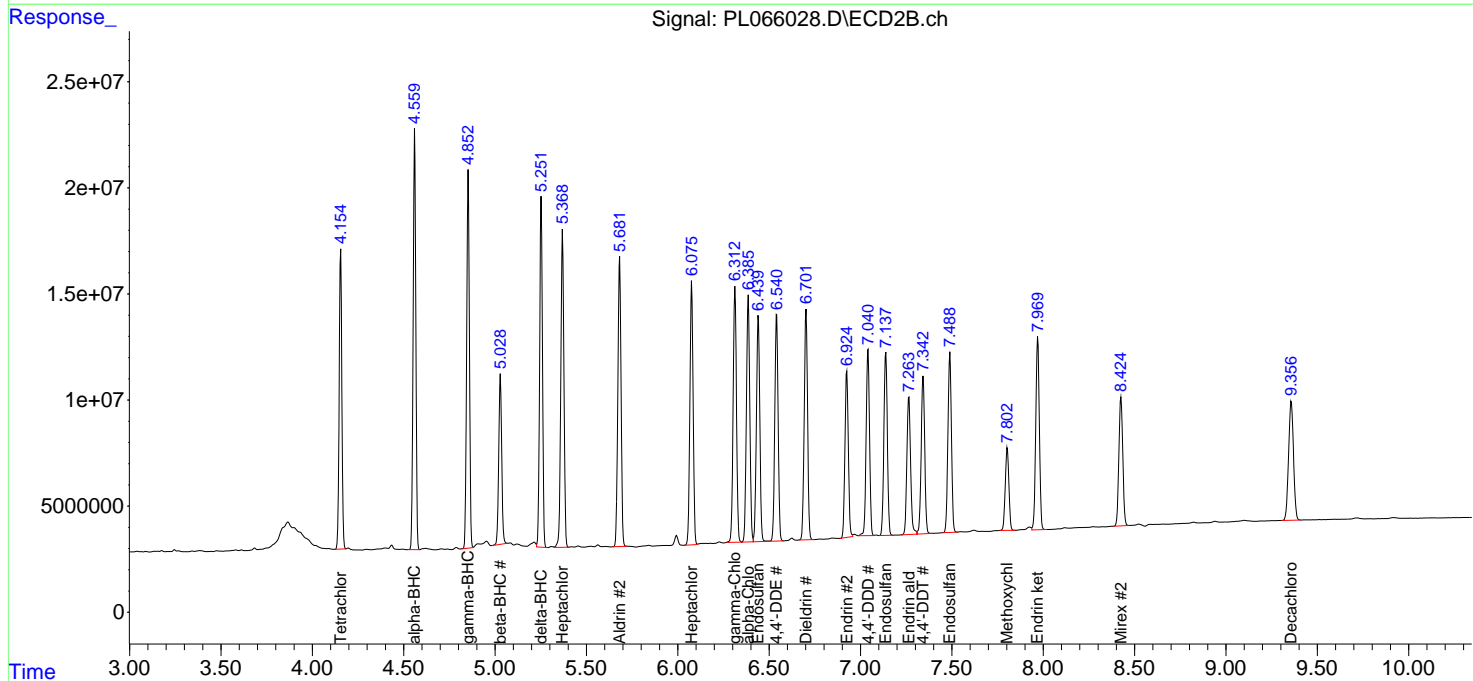
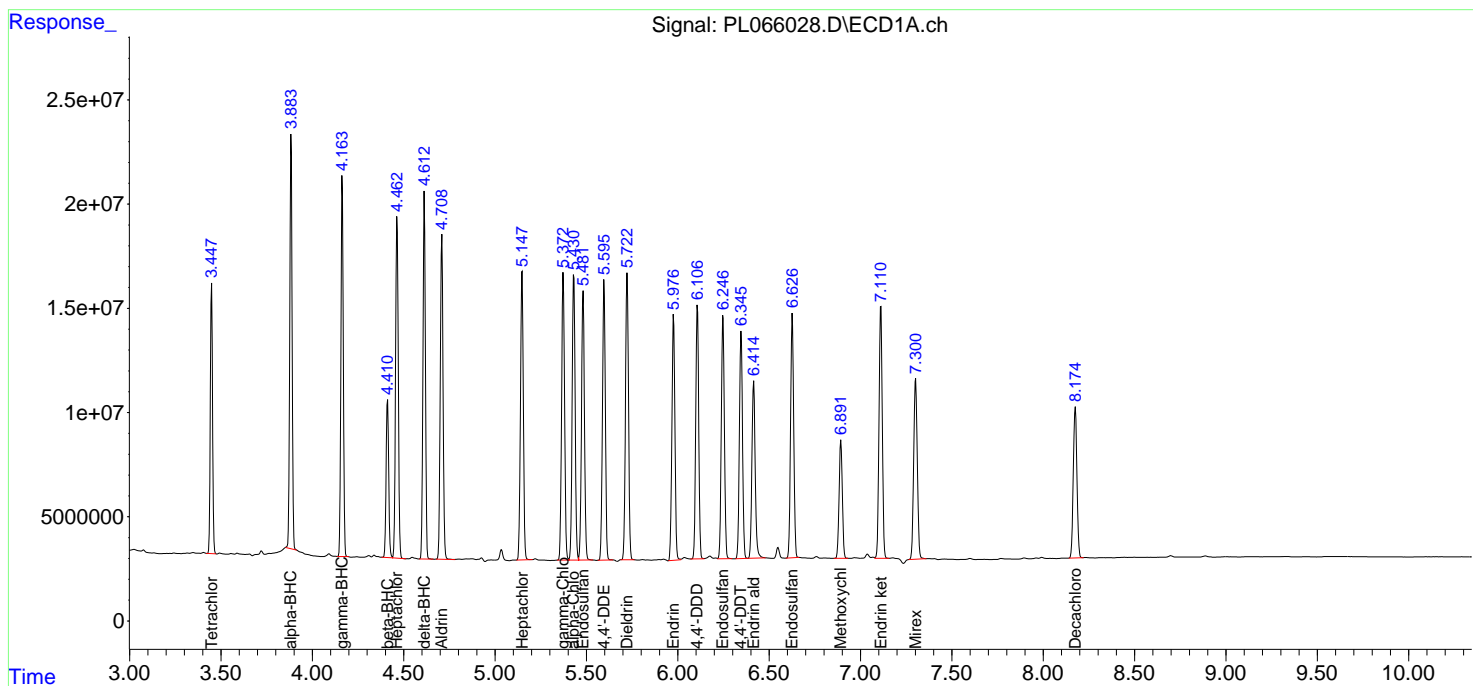
(f)=RT Delta > 1/2 Window (#)=Amounts differ by > 25% (m)=manual int.

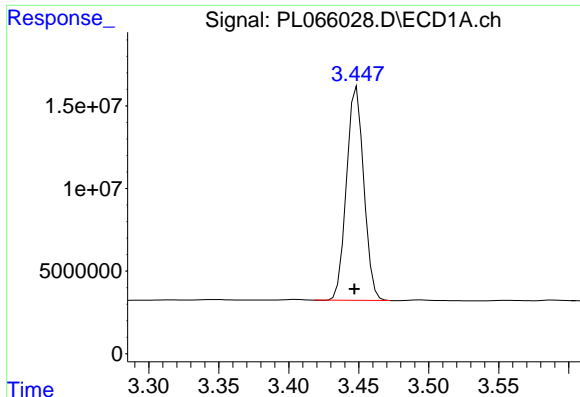
Data Path : Z:\pestpcbsrv\HPCHEM1\ECD_L\Data\PL041221\
 Data File : PL066028.D
 Signal(s) : Signal #1: ECD1A.ch Signal #2: ECD2B.ch
 Acq On : 12 Apr 2021 15:26
 Operator : AR\AJ
 Sample : PSTDCCC050
 Misc :
 ALS Vial : 4 Sample Multiplier: 1

Instrument :
 ECD_L
 ClientSampleId :
 PSTDCCC050

Integration File signal 1: autoint1.e
 Integration File signal 2: autoint2.e
 Quant Time: Apr 13 08:31:17 2021
 Quant Method : Z:\pestpcbsrv\HPCHEM1\ECD_L\methods\PL040921.M
 Quant Title : GC Extractables
 QLast Update : Sat Apr 10 02:10:31 2021
 Response via : Initial Calibration
 Integrator: ChemStation

Volume Inj. : 1 µl
 Signal #1 Phase : ZB-MR2 Signal #2 Phase: ZB-MR1
 Signal #1 Info : 30M x 0.32mm x0.2 Signal #2 Info : 30M x 0.32mm x0.5µm

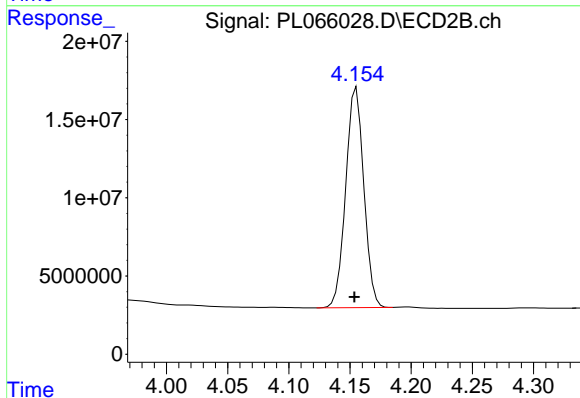




#1 Tetrachloro-m-xylene

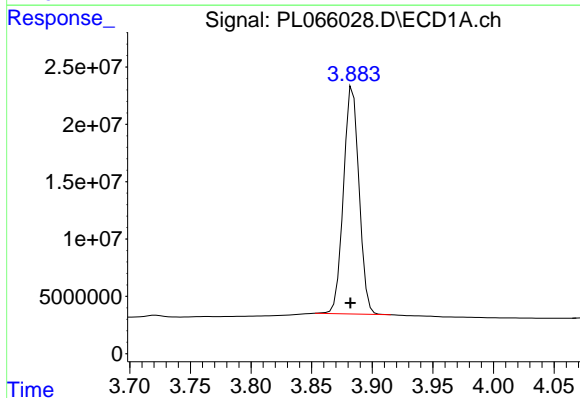
R.T.: 3.449 min
Delta R.T.: 0.002 min
Response: 111300123
Conc: 45.83 ng/ml

Instrument :
ECD_L
ClientSampleId :
PSTDCCC050



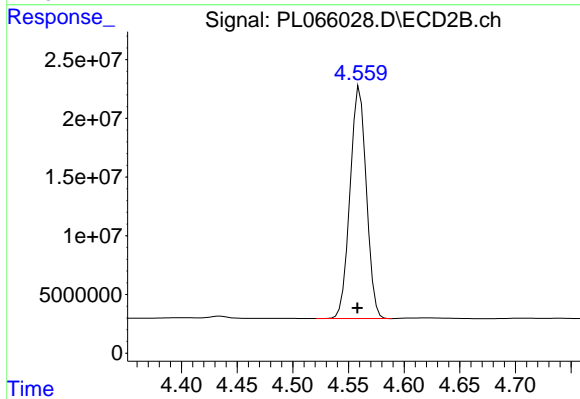
#1 Tetrachloro-m-xylene

R.T.: 4.155 min
Delta R.T.: 0.002 min
Response: 144856638
Conc: 52.55 ng/ml



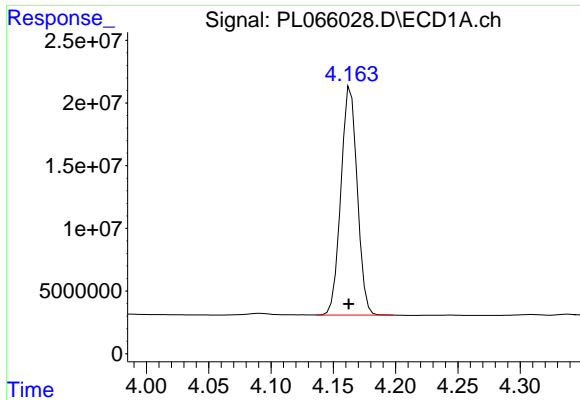
#2 alpha-BHC

R.T.: 3.884 min
Delta R.T.: 0.002 min
Response: 177066857
Conc: 46.33 ng/ml



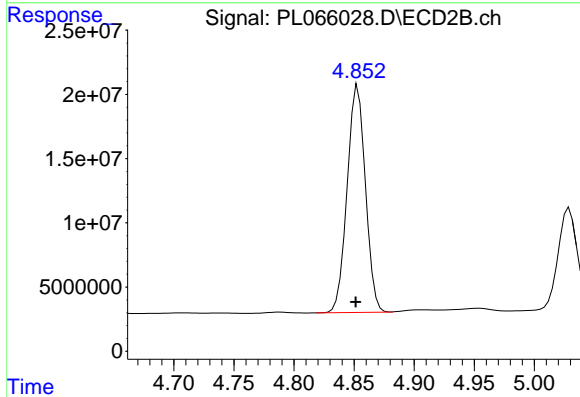
#2 alpha-BHC

R.T.: 4.560 min
Delta R.T.: 0.002 min
Response: 201783831
Conc: 55.29 ng/ml

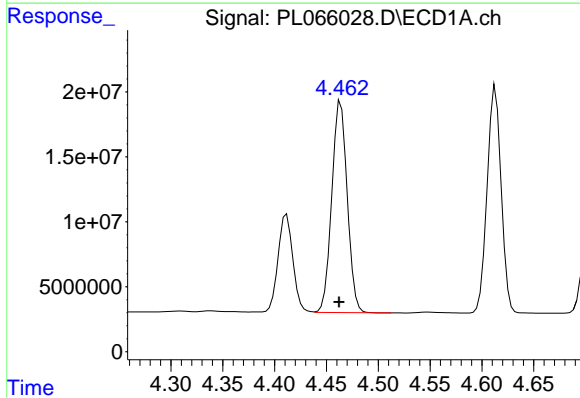


#3 gamma-BHC (Lindane)
 R.T.: 4.164 min
 Delta R.T.: 0.002 min
 Response: 166533857
 Conc: 47.35 ng/ml

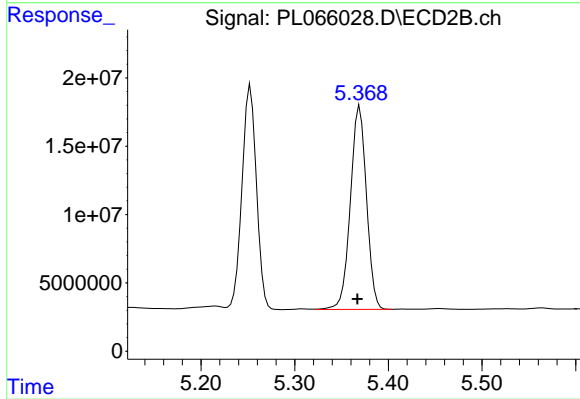
Instrument :
 ECD_L
 ClientSampleId :
 PSTDCCC050



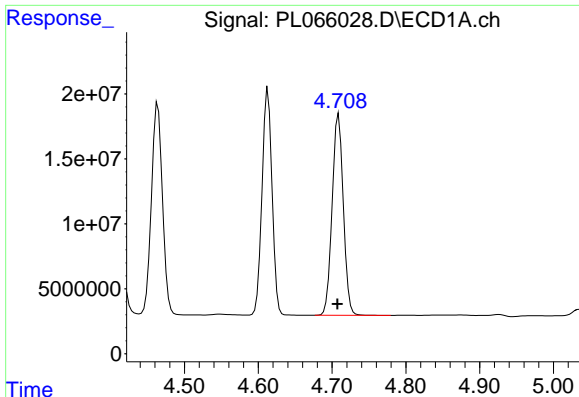
#3 gamma-BHC (Lindane)
 R.T.: 4.853 min
 Delta R.T.: 0.002 min
 Response: 187415329
 Conc: 54.05 ng/ml



#4 Heptachlor
 R.T.: 4.464 min
 Delta R.T.: 0.002 min
 Response: 168755405
 Conc: 45.57 ng/ml

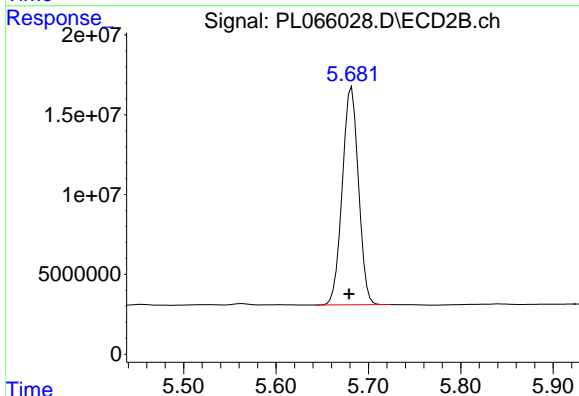


#4 Heptachlor
 R.T.: 5.370 min
 Delta R.T.: 0.002 min
 Response: 177831836
 Conc: 51.62 ng/ml

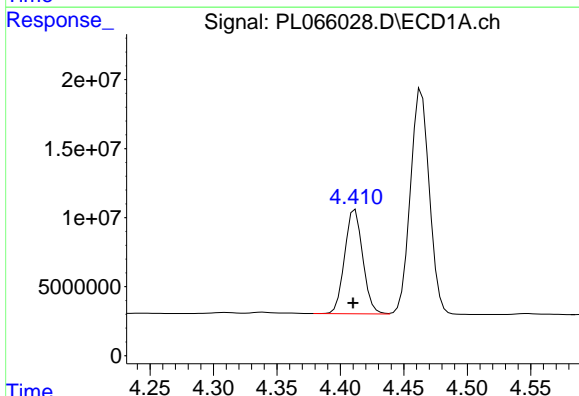


#5 Aldrin
 R.T.: 4.709 min
 Delta R.T.: 0.002 min
 Response: 163296566
 Conc: 47.24 ng/ml

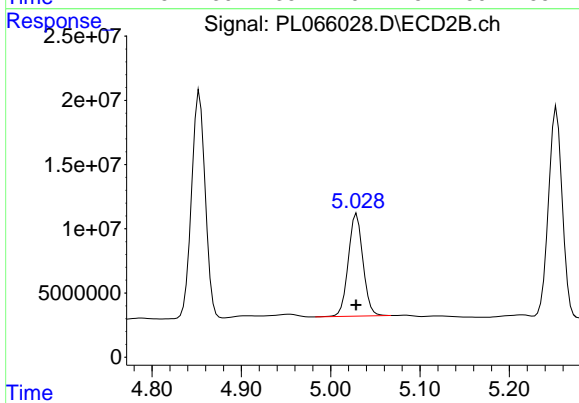
Instrument :
 ECD_L
 ClientSampleId :
 PSTDCCC050



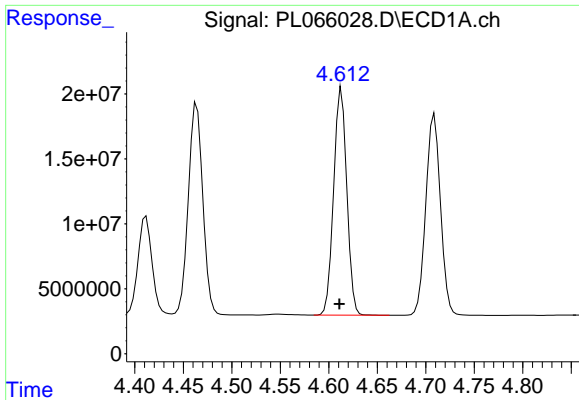
#5 Aldrin
 R.T.: 5.682 min
 Delta R.T.: 0.003 min
 Response: 166012569
 Conc: 54.85 ng/ml



#6 beta-BHC
 R.T.: 4.412 min
 Delta R.T.: 0.002 min
 Response: 74745553
 Conc: 43.38 ng/ml

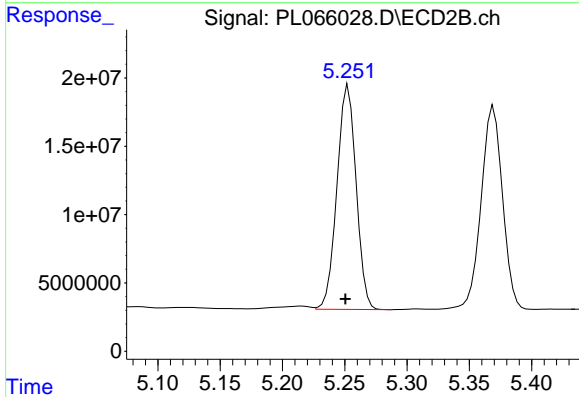


#6 beta-BHC
 R.T.: 5.029 min
 Delta R.T.: 0.000 min
 Response: 91031726
 Conc: 51.58 ng/ml

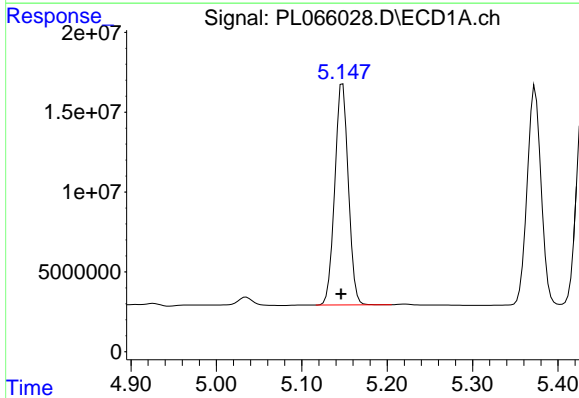


#7 delta-BHC
 R.T.: 4.613 min
 Delta R.T.: 0.002 min
 Response: 164811668
 Conc: 46.09 ng/ml

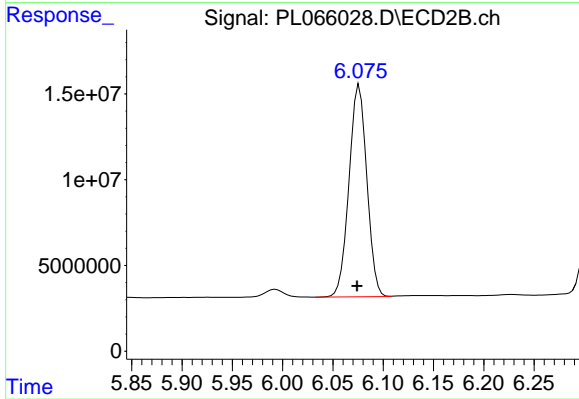
Instrument :
 ECD_L
 ClientSampleId :
 PSTDCCC050



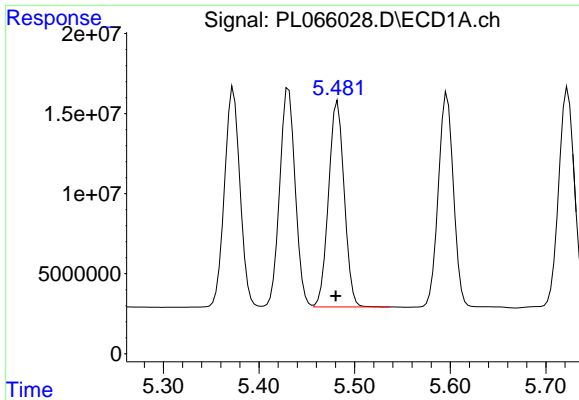
#7 delta-BHC
 R.T.: 5.253 min
 Delta R.T.: 0.002 min
 Response: 175899118
 Conc: 52.56 ng/ml



#8 Heptachlor epoxide
 R.T.: 5.148 min
 Delta R.T.: 0.002 min
 Response: 152921761
 Conc: 46.90 ng/ml

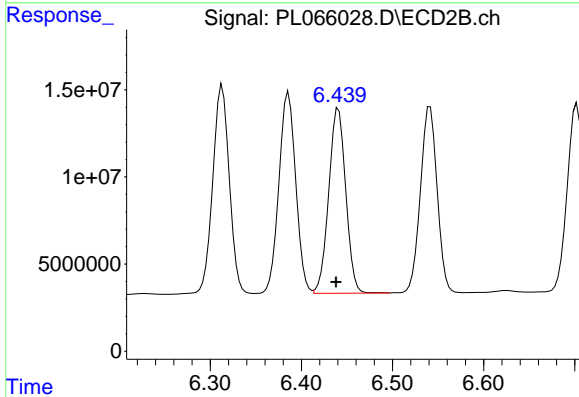


#8 Heptachlor epoxide
 R.T.: 6.076 min
 Delta R.T.: 0.002 min
 Response: 152121998
 Conc: 53.55 ng/ml

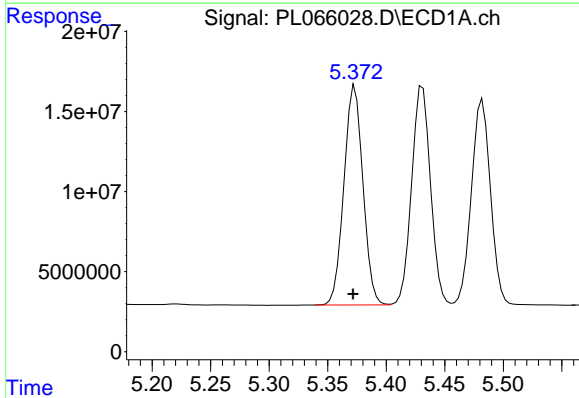


#9 Endosulfan I
 R.T.: 5.482 min
 Delta R.T.: 0.002 min
 Response: 146015566
 Conc: 47.56 ng/ml

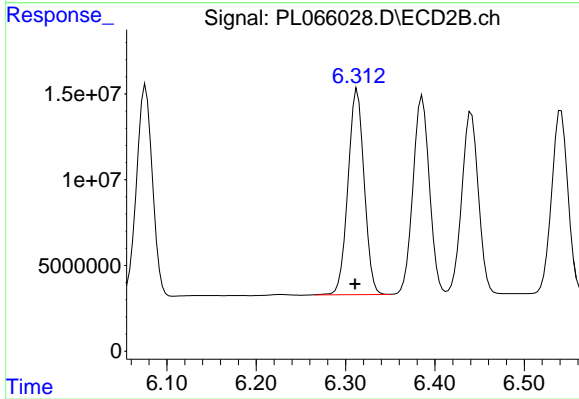
Instrument :
 ECD_L
 ClientSampleId :
 PSTDCCC050



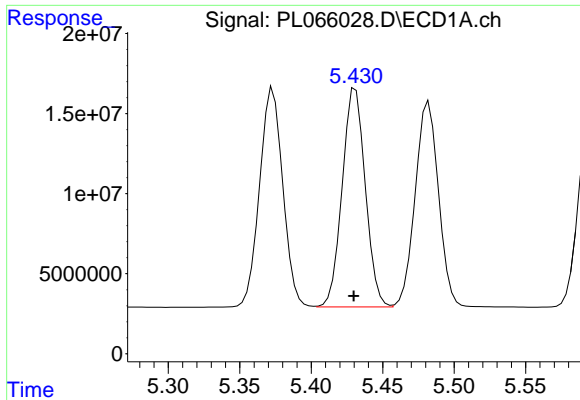
#9 Endosulfan I
 R.T.: 6.441 min
 Delta R.T.: 0.003 min
 Response: 137694375
 Conc: 54.26 ng/ml



#10 gamma-Chlordane
 R.T.: 5.373 min
 Delta R.T.: 0.002 min
 Response: 154893662
 Conc: 47.11 ng/ml

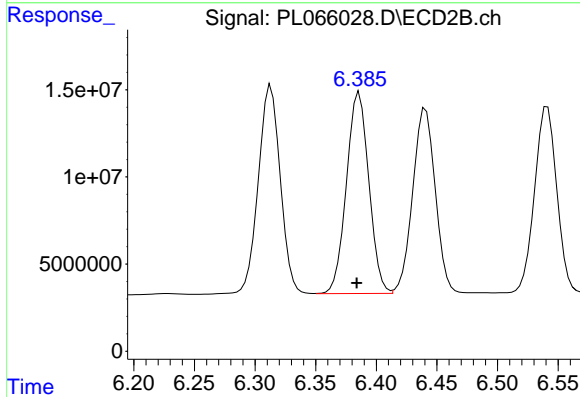


#10 gamma-Chlordane
 R.T.: 6.313 min
 Delta R.T.: 0.003 min
 Response: 150849667
 Conc: 54.40 ng/ml

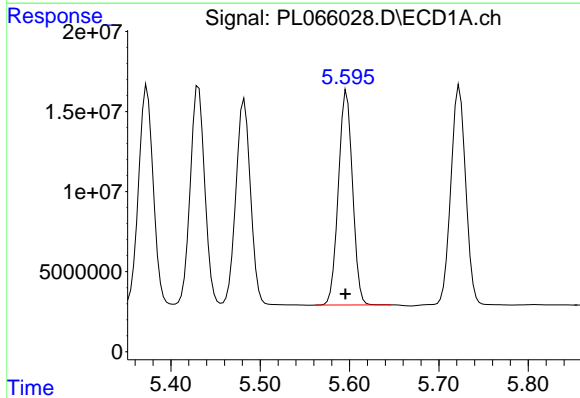


#11 alpha-Chlordane
 R.T.: 5.431 min
 Delta R.T.: 0.001 min
 Response: 153780836
 Conc: 47.37 ng/ml

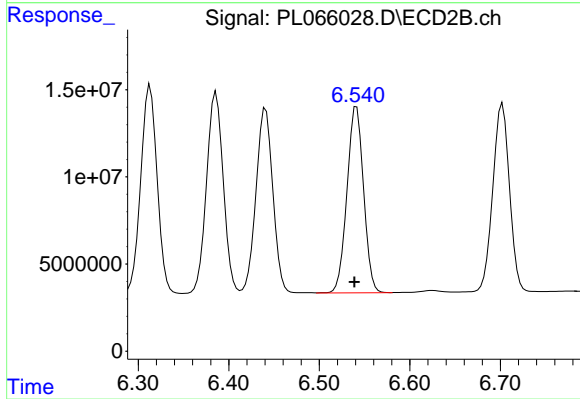
Instrument :
 ECD_L
 ClientSampleId :
 PSTDCCC050



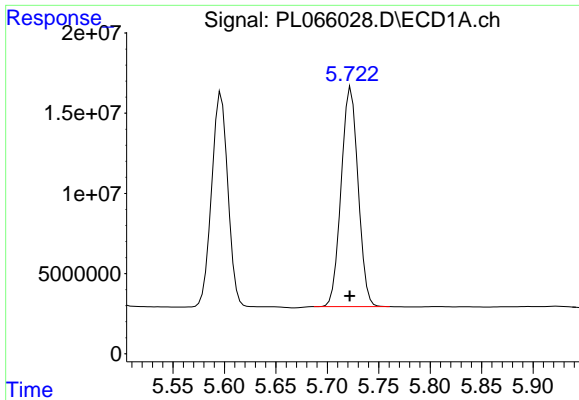
#11 alpha-Chlordane
 R.T.: 6.386 min
 Delta R.T.: 0.002 min
 Response: 148393851
 Conc: 54.14 ng/ml



#12 4,4'-DDE
 R.T.: 5.597 min
 Delta R.T.: 0.002 min
 Response: 146997319
 Conc: 48.14 ng/ml

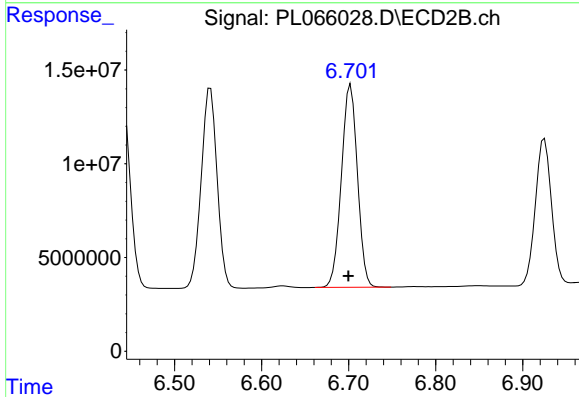


#12 4,4'-DDE
 R.T.: 6.541 min
 Delta R.T.: 0.003 min
 Response: 136203024
 Conc: 54.67 ng/ml

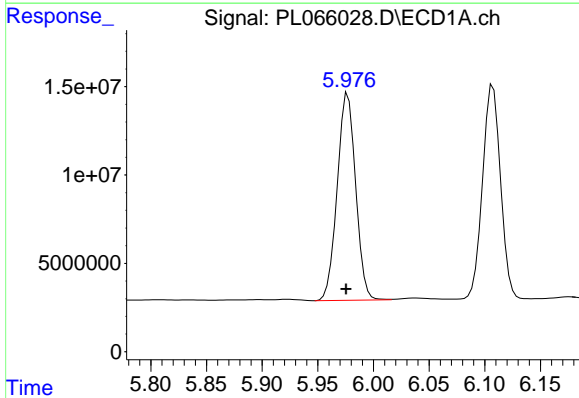


#13 Dieldrin
 R.T.: 5.723 min
 Delta R.T.: 0.001 min
 Response: 156869729
 Conc: 47.01 ng/ml

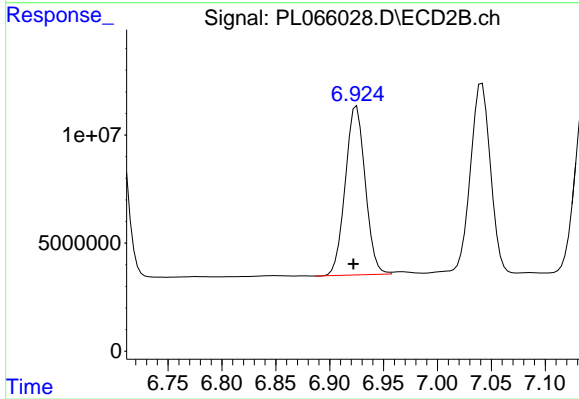
Instrument :
 ECD_L
 ClientSampleId :
 PSTDCCC050



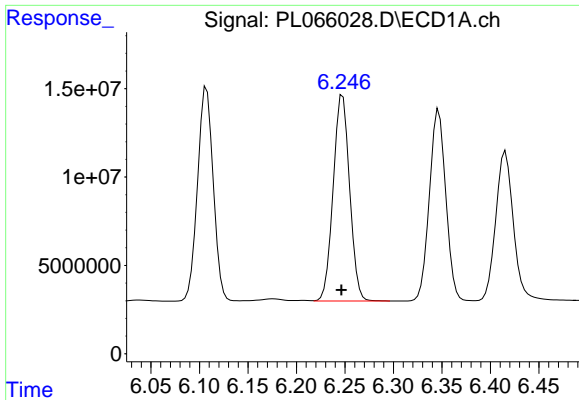
#13 Dieldrin
 R.T.: 6.702 min
 Delta R.T.: 0.003 min
 Response: 138272742
 Conc: 53.97 ng/ml



#14 Endrin
 R.T.: 5.977 min
 Delta R.T.: 0.002 min
 Response: 135169349
 Conc: 45.86 ng/ml



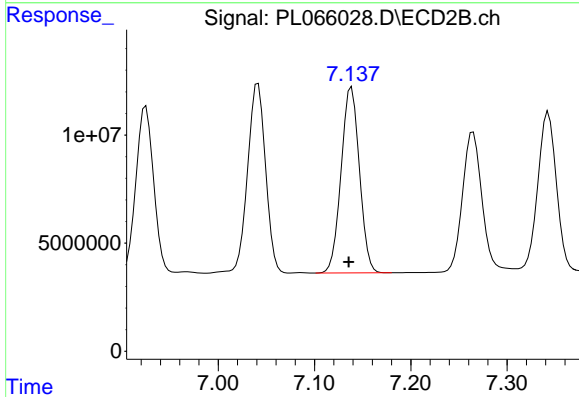
#14 Endrin
 R.T.: 6.925 min
 Delta R.T.: 0.003 min
 Response: 100535336
 Conc: 53.66 ng/ml



#15 Endosulfan II

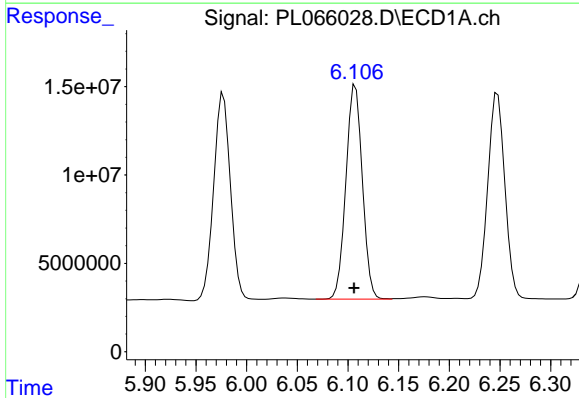
R.T.: 6.248 min
 Delta R.T.: 0.001 min
 Response: 137269083
 Conc: 46.61 ng/ml

Instrument :
 ECD_L
 ClientSampleId :
 PSTDCCC050



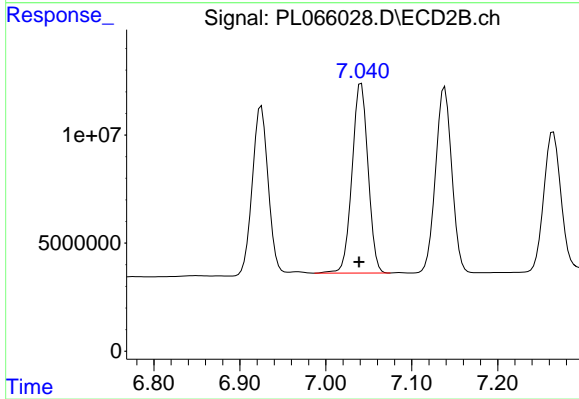
#15 Endosulfan II

R.T.: 7.139 min
 Delta R.T.: 0.003 min
 Response: 113189182
 Conc: 53.13 ng/ml



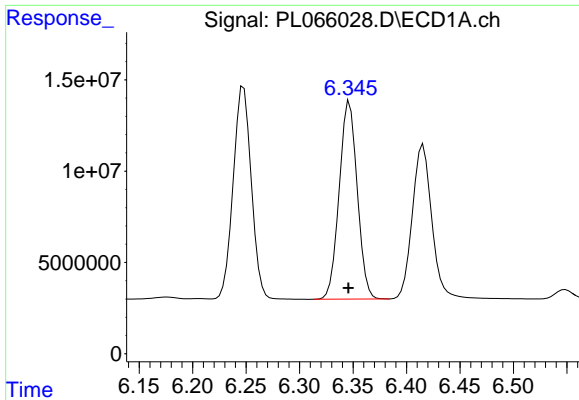
#16 4,4'-DDD

R.T.: 6.107 min
 Delta R.T.: 0.001 min
 Response: 136498711
 Conc: 47.78 ng/ml



#16 4,4'-DDD

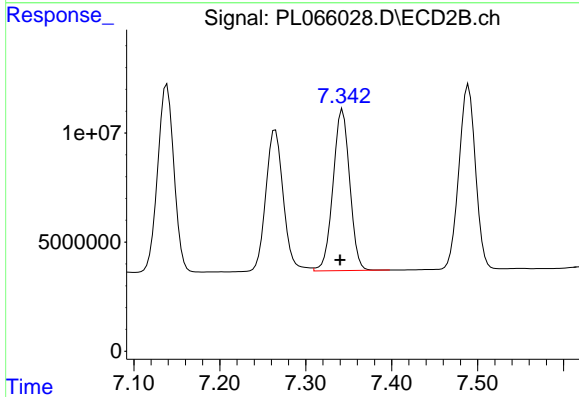
R.T.: 7.041 min
 Delta R.T.: 0.003 min
 Response: 113757541
 Conc: 54.58 ng/ml



#17 4,4'-DDT

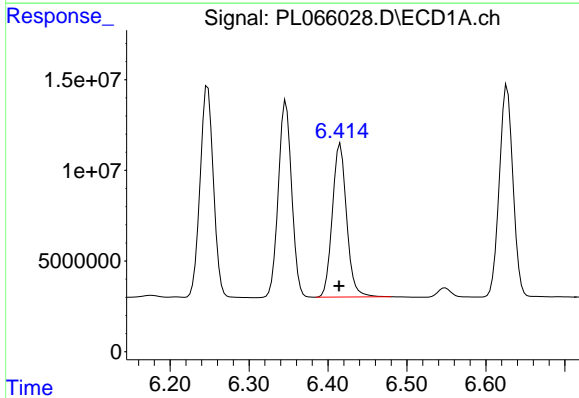
R.T.: 6.347 min
 Delta R.T.: 0.001 min
 Response: 127398864
 Conc: 45.19 ng/ml

Instrument :
 ECD_L
 ClientSampleId :
 PSTDCCC050



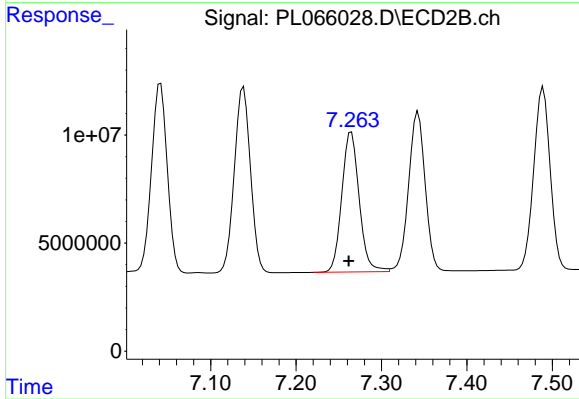
#17 4,4'-DDT

R.T.: 7.343 min
 Delta R.T.: 0.003 min
 Response: 99321856
 Conc: 52.41 ng/ml



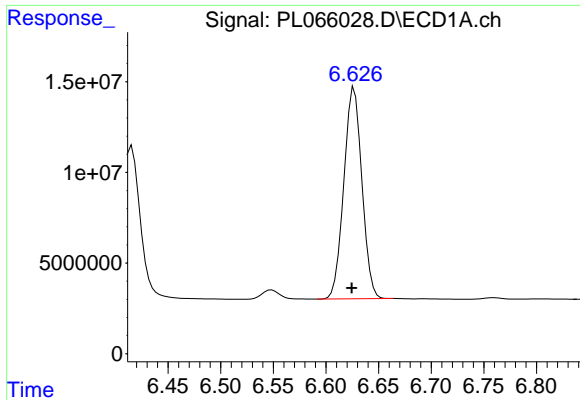
#18 Endrin aldehyde

R.T.: 6.416 min
 Delta R.T.: 0.002 min
 Response: 106510774
 Conc: 45.99 ng/ml



#18 Endrin aldehyde

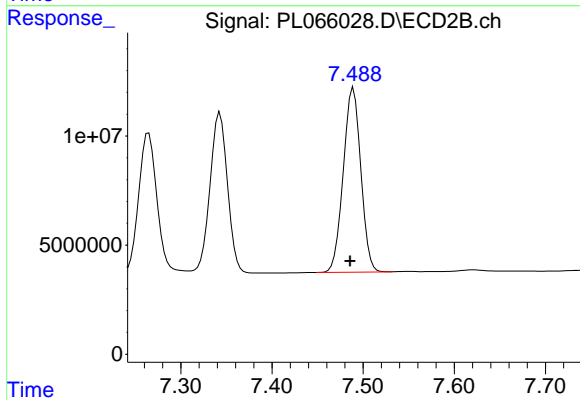
R.T.: 7.265 min
 Delta R.T.: 0.003 min
 Response: 91603134
 Conc: 52.80 ng/ml



#19 Endosulfan Sulfate

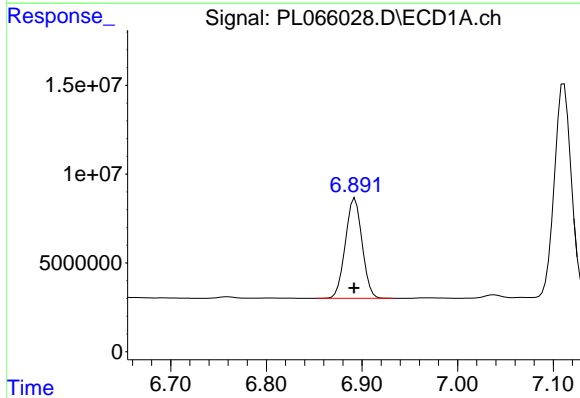
R.T.: 6.627 min
 Delta R.T.: 0.003 min
 Response: 139670616
 Conc: 45.40 ng/ml

Instrument :
 ECD_L
 ClientSampleId :
 PSTDCCC050



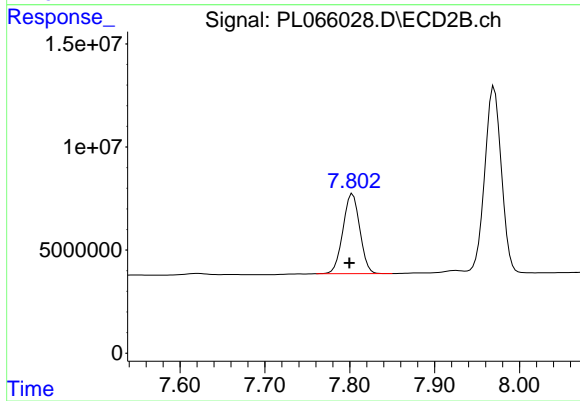
#19 Endosulfan Sulfate

R.T.: 7.489 min
 Delta R.T.: 0.004 min
 Response: 112981925
 Conc: 52.69 ng/ml



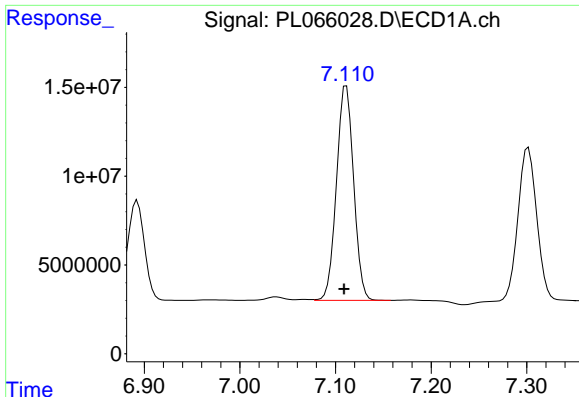
#20 Methoxychlor

R.T.: 6.893 min
 Delta R.T.: 0.000 min
 Response: 69022508
 Conc: 44.04 ng/ml



#20 Methoxychlor

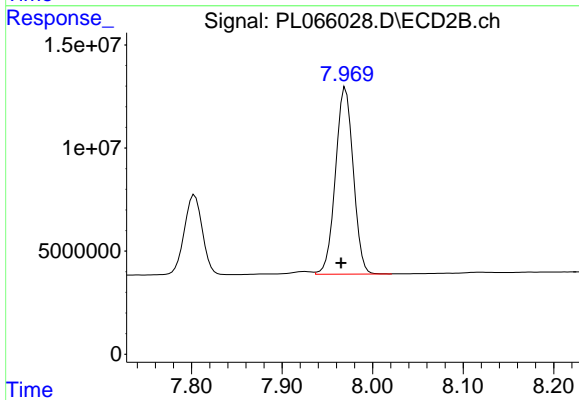
R.T.: 7.803 min
 Delta R.T.: 0.004 min
 Response: 53353605
 Conc: 52.92 ng/ml



#21 Endrin ketone

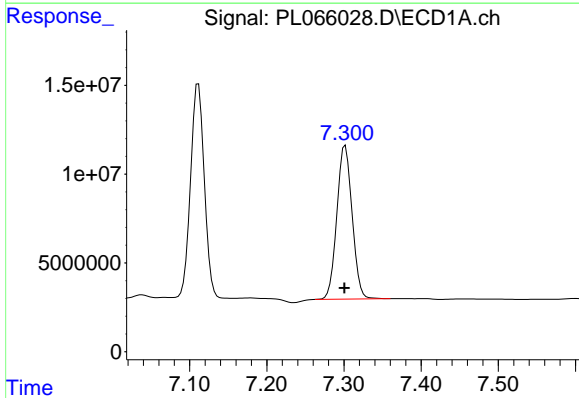
R.T.: 7.111 min
 Delta R.T.: 0.002 min
 Response: 150658432
 Conc: 46.73 ng/ml

Instrument :
 ECD_L
 ClientSampleId :
 PSTDCCC050



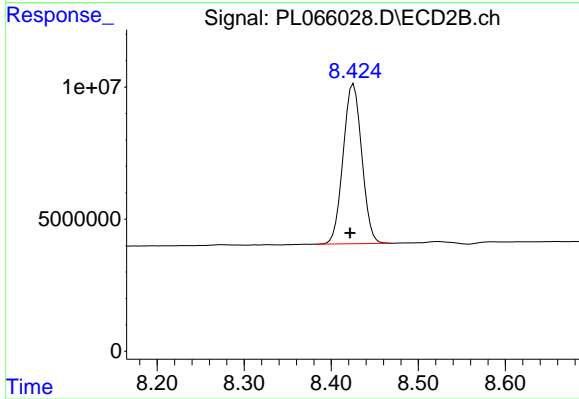
#21 Endrin ketone

R.T.: 7.970 min
 Delta R.T.: 0.005 min
 Response: 123465468
 Conc: 54.68 ng/ml



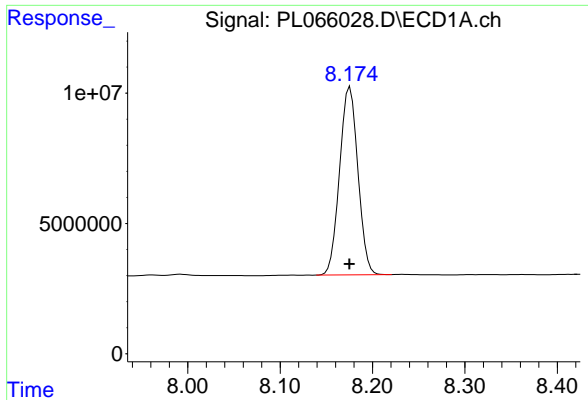
#22 Mirex

R.T.: 7.302 min
 Delta R.T.: 0.000 min
 Response: 119003189
 Conc: 46.04 ng/ml



#22 Mirex

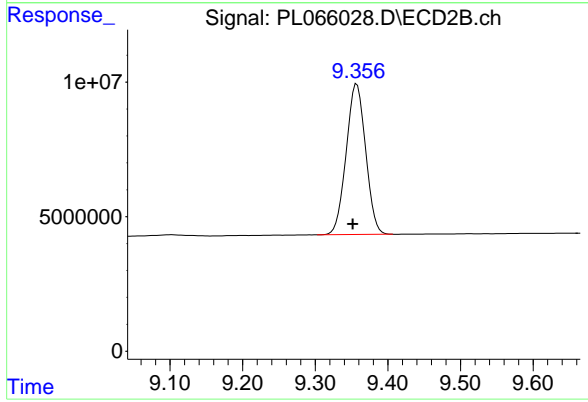
R.T.: 8.426 min
 Delta R.T.: 0.004 min
 Response: 89983984
 Conc: 53.42 ng/ml



#28 Decachlorobiphenyl

R.T.: 8.176 min
Delta R.T.: 0.000 min
Response: 99491847
Conc: 46.12 ng/ml

Instrument :
ECD_L
ClientSampleId :
PSTDCCC050



#28 Decachlorobiphenyl

R.T.: 9.357 min
Delta R.T.: 0.006 min
Response: 104294100
Conc: 55.02 ng/ml