

Data Path : Z:\pestpcbsrv\HPCHEM1\ECD_L\Data\PL041222\
 Data File : PL073998.D
 Signal(s) : Signal #1: ECD1A.ch Signal #2: ECD2B.ch
 Acq On : 12 Apr 2022 20:53
 Operator : AR\AJ
 Sample : PSTDCCC050
 Misc :
 ALS Vial : 4 Sample Multiplier: 1

Instrument :
 ECD_L
 ClientSampleId :

Integration File signal 1: autoint1.e
 Integration File signal 2: autoint2.e
 Quant Time: Apr 13 02:33:23 2022
 Quant Method : Z:\pestpcbsrv\HPCHEM1\ECD_L\methods\PL040822.M
 Quant Title : GC Extractables
 QLast Update : Fri Apr 08 15:48:40 2022
 Response via : Initial Calibration
 Integrator: ChemStation

Volume Inj. : 1 µl
 Signal #1 Phase : ZB-MR2 Signal #2 Phase: ZB-MR1
 Signal #1 Info : 30M x 0.32mm x0.2 Signal #2 Info : 30M x 0.32mm x0.5µm

Compound	RT#1	RT#2	Resp#1	Resp#2	ng/ml	ng/ml

System Monitoring Compounds						
1) SA Tetrachlo...	4.637	5.490	16253037	90910657	50.302	50.988
28) SA Decachlor...	10.410	11.330	22176845	79096430	42.645	44.781
Target Compounds						
2) A alpha-BHC	5.345	6.053	20717941	130.3E6	49.368	51.753
3) MA gamma-BHC...	5.769	6.442	20677602	119.9E6	49.303	50.638
4) MA Heptachlor	6.179	7.101	20875633	118.1E6	46.343	45.287
5) MB Aldrin	6.505	7.469	20253917	112.1E6	48.799	47.734
6) B beta-BHC	6.149	6.679	10530496	54421076	51.537	48.288
7) B delta-BHC	6.411	6.947	20757103	117.7E6	50.178	48.173
8) B Heptachlo...	7.082	7.925	20762837	100.1E6	48.405	44.474
9) A Endosulfan I	7.484	8.326	19923078	90722479	48.578	46.083
10) B gamma-Chl...	7.359	8.194	21114309	99558444	48.141	44.638
11) B alpha-Chl...	7.429	8.276	21239692	98151938	48.078	45.597
12) B 4,4'-DDE	7.643	8.460	17842054	92470633	48.907	46.428
13) MA Dieldrin	7.771	8.611	19964916	90565924	46.476	45.164
14) MA Endrin	8.062	8.845	18146463	71752537	44.670	42.365
15) B Endosulfa...	8.373	9.069	18672150	71551756	45.303	41.187
16) A 4,4'-DDD	8.228	8.988	16717466	72994254	51.769	47.442
17) MA 4,4'-DDT	8.489	9.306	15452394	66732723	41.804	37.645
18) B Endrin al...	8.561	9.201	14424521	54117818	44.582	41.899
19) B Endosulfa...	8.792	9.439	20110218	71980884	47.094	43.249
20) A Methoxychlor	9.084	9.786	10208474	34726218	41.119	36.104
21) B Endrin ke...	9.311	9.928	23832188	76516910	48.781	44.205
22) Mirex	9.499	10.404	20979382	59578088	44.981	43.254
23) Chlordane-1	0.000	6.855	0	879894	N.D.	11.026 #
24) Chlordane-2	0.000	7.469f	0	112.1E6	N.D.	1356.620 #
25) Chlordane-3	7.359	8.194	21114309	99558444	488.057	294.290 #
26) Chlordane-4	7.429	8.276	21239692	98151938	457.631	247.470 #
27) Chlordane-5	8.373	0.000	18672150	0	1070.608	N.D. #

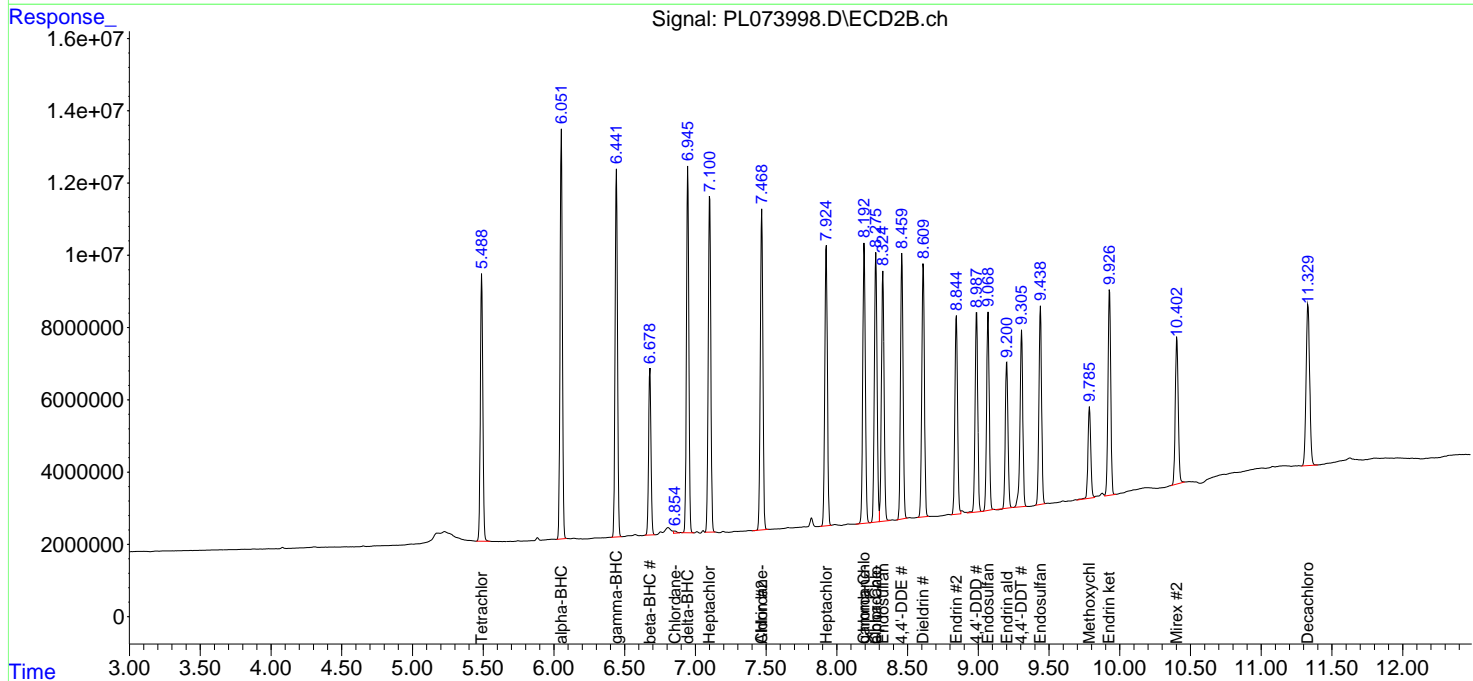
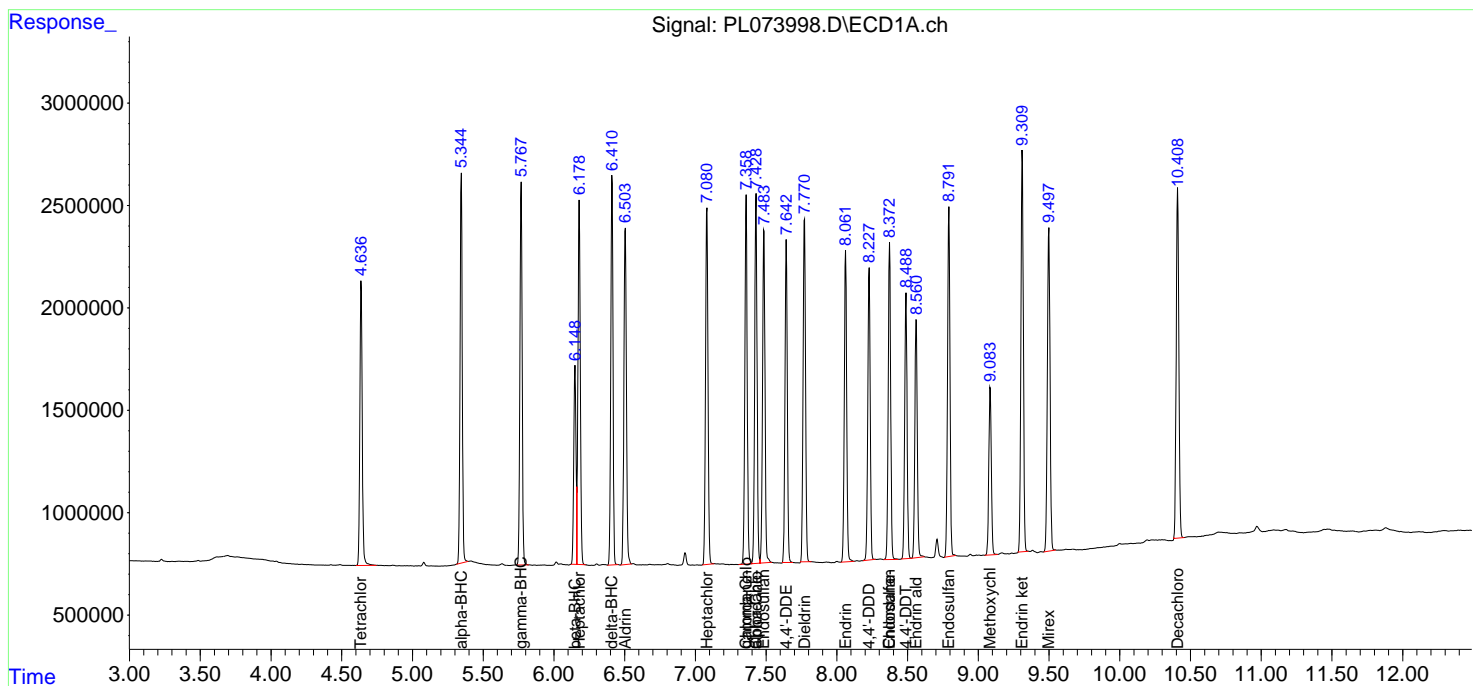
(f)=RT Delta > 1/2 Window (#)=Amounts differ by > 25% (m)=manual int.

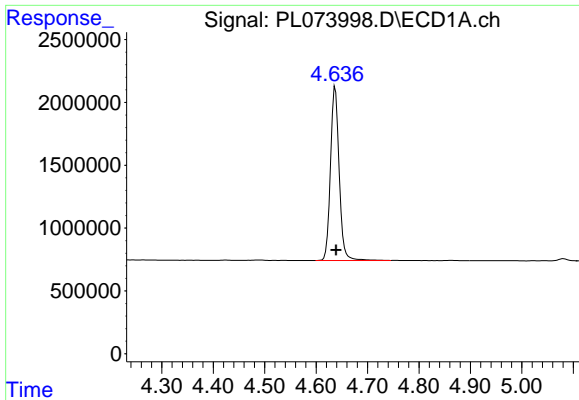
Data Path : Z:\pestpcbsrv\HPCHEM1\ECD_L\Data\PL041222\
 Data File : PL073998.D
 Signal(s) : Signal #1: ECD1A.ch Signal #2: ECD2B.ch
 Acq On : 12 Apr 2022 20:53
 Operator : AR\AJ
 Sample : PSTDCCC050
 Misc :
 ALS Vial : 4 Sample Multiplier: 1

Instrument :
 ECD_L
 ClientSampleId :

Integration File signal 1: autoint1.e
 Integration File signal 2: autoint2.e
 Quant Time: Apr 13 02:33:23 2022
 Quant Method : Z:\pestpcbsrv\HPCHEM1\ECD_L\methods\PL040822.M
 Quant Title : GC Extractables
 QLast Update : Fri Apr 08 15:48:40 2022
 Response via : Initial Calibration
 Integrator: ChemStation

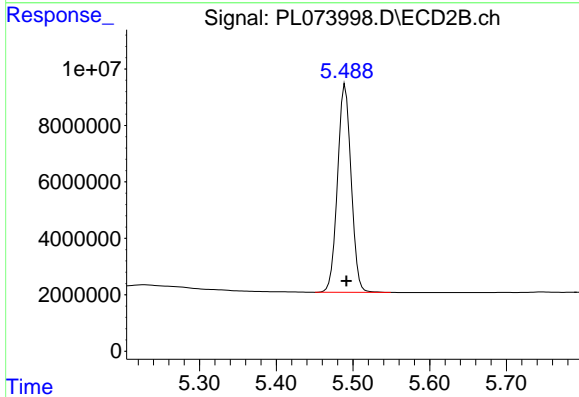
Volume Inj. : 1 µl
 Signal #1 Phase : ZB-MR2 Signal #2 Phase: ZB-MR1
 Signal #1 Info : 30M x 0.32mm x0.2 Signal #2 Info : 30M x 0.32mm x0.5µm



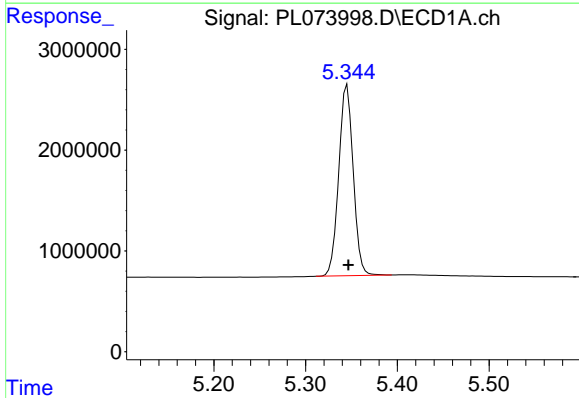


#1 Tetrachloro-m-xylene
 R.T.: 4.637 min
 Delta R.T.: -0.002 min
 Response: 16253037
 Conc: 50.30 ng/ml

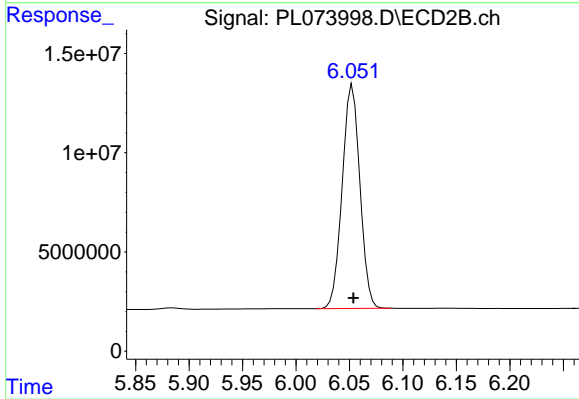
Instrument :
 ECD_L
 ClientSampleId :



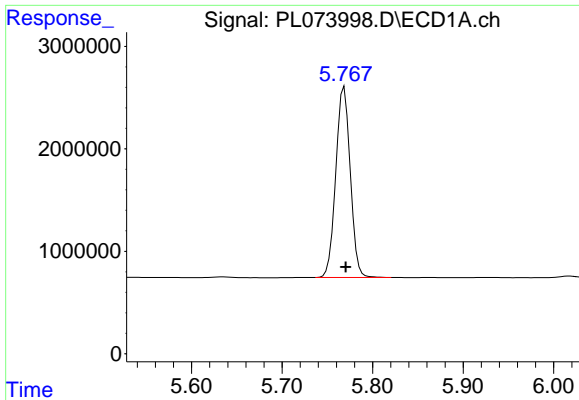
#1 Tetrachloro-m-xylene
 R.T.: 5.490 min
 Delta R.T.: -0.002 min
 Response: 90910657
 Conc: 50.99 ng/ml



#2 alpha-BHC
 R.T.: 5.345 min
 Delta R.T.: -0.001 min
 Response: 20717941
 Conc: 49.37 ng/ml



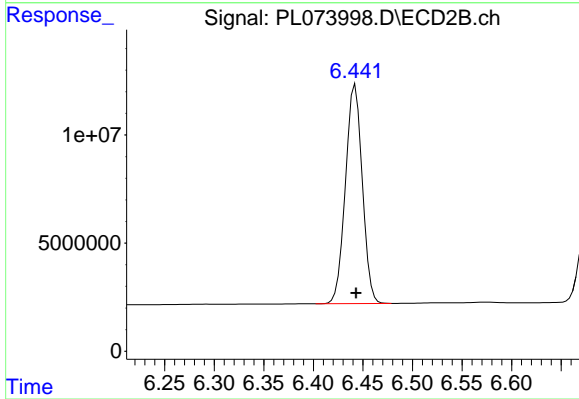
#2 alpha-BHC
 R.T.: 6.053 min
 Delta R.T.: 0.000 min
 Response: 130319224
 Conc: 51.75 ng/ml



#3 gamma-BHC (Lindane)

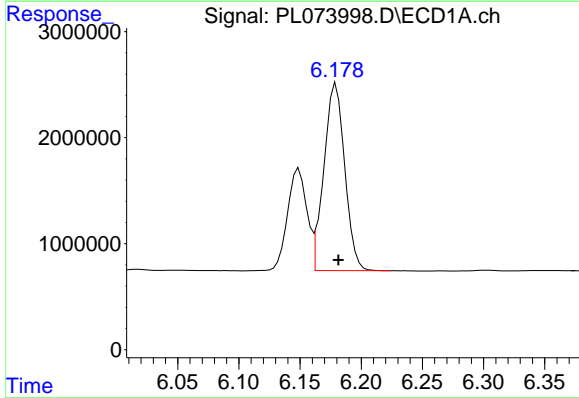
R.T.: 5.769 min
 Delta R.T.: -0.002 min
 Response: 20677602
 Conc: 49.30 ng/ml

Instrument :
 ECD_L
 ClientSampleId :



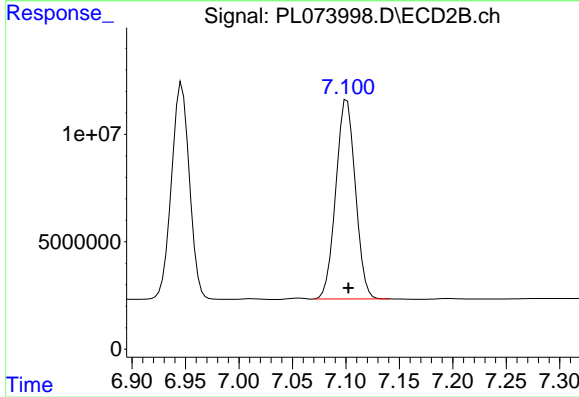
#3 gamma-BHC (Lindane)

R.T.: 6.442 min
 Delta R.T.: 0.000 min
 Response: 119865688
 Conc: 50.64 ng/ml



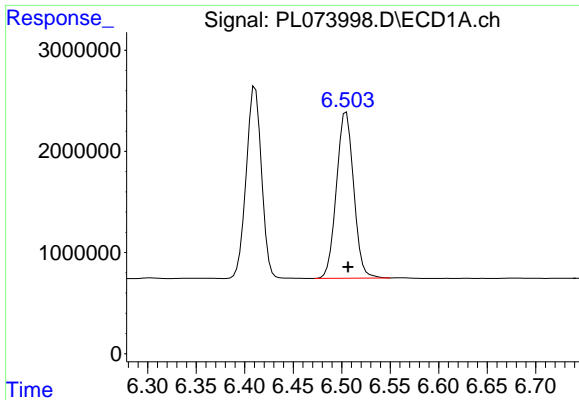
#4 Heptachlor

R.T.: 6.179 min
 Delta R.T.: -0.002 min
 Response: 20875633
 Conc: 46.34 ng/ml



#4 Heptachlor

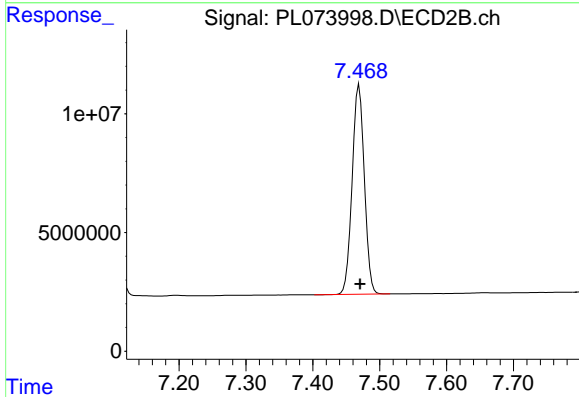
R.T.: 7.101 min
 Delta R.T.: -0.001 min
 Response: 118126312
 Conc: 45.29 ng/ml



#5 Aldrin

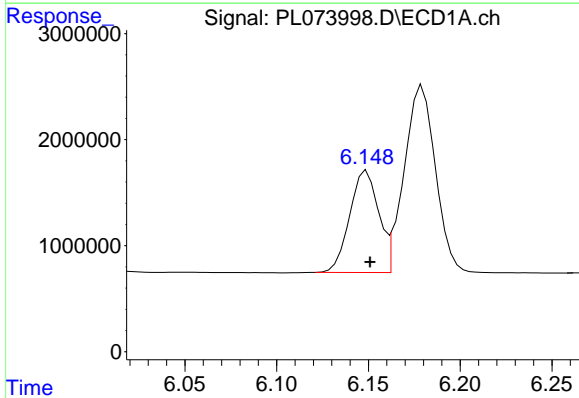
R.T.: 6.505 min
 Delta R.T.: -0.002 min
 Response: 20253917
 Conc: 48.80 ng/ml

Instrument :
 ECD_L
 ClientSampleId :



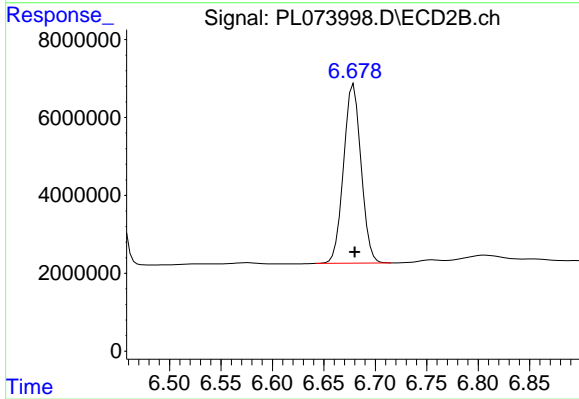
#5 Aldrin

R.T.: 7.469 min
 Delta R.T.: -0.002 min
 Response: 112107256
 Conc: 47.73 ng/ml



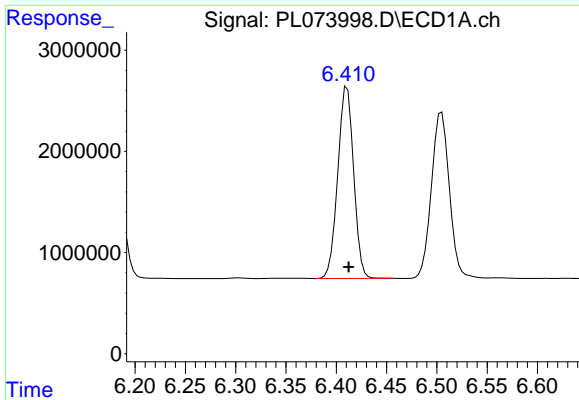
#6 beta-BHC

R.T.: 6.149 min
 Delta R.T.: -0.002 min
 Response: 10530496
 Conc: 51.54 ng/ml



#6 beta-BHC

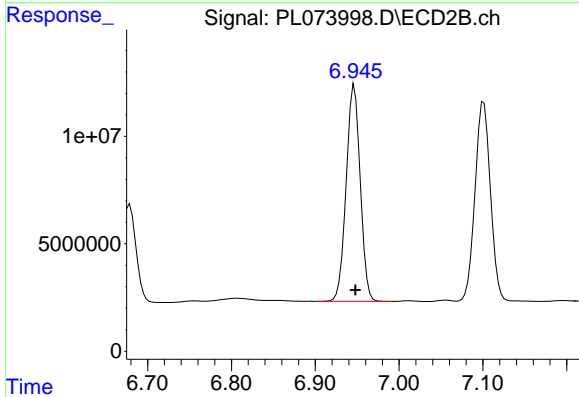
R.T.: 6.679 min
 Delta R.T.: 0.000 min
 Response: 54421076
 Conc: 48.29 ng/ml



#7 delta-BHC

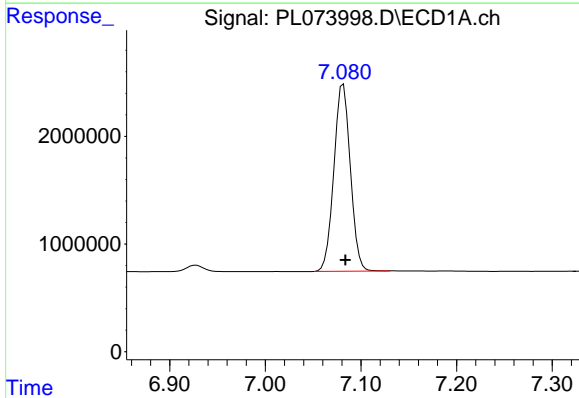
R.T.: 6.411 min
 Delta R.T.: -0.002 min
 Response: 20757103
 Conc: 50.18 ng/ml

Instrument :
 ECD_L
 ClientSampleId :



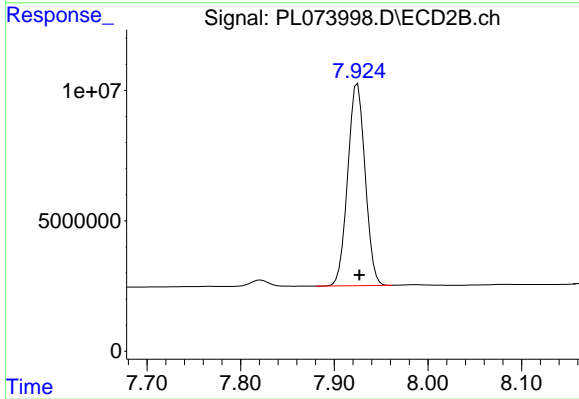
#7 delta-BHC

R.T.: 6.947 min
 Delta R.T.: -0.001 min
 Response: 117651395
 Conc: 48.17 ng/ml



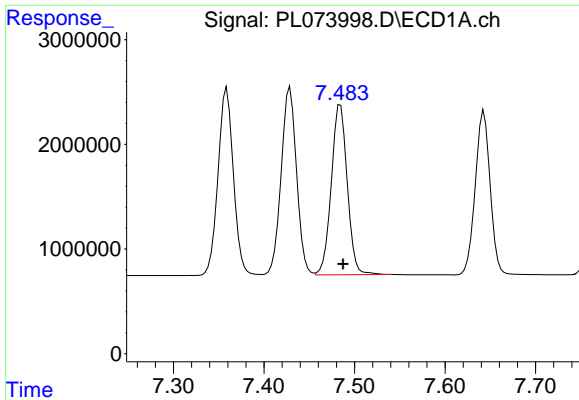
#8 Heptachlor epoxide

R.T.: 7.082 min
 Delta R.T.: -0.002 min
 Response: 20762837
 Conc: 48.41 ng/ml



#8 Heptachlor epoxide

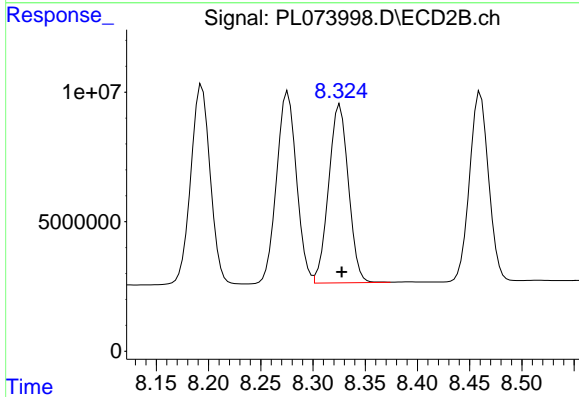
R.T.: 7.925 min
 Delta R.T.: -0.002 min
 Response: 100136841
 Conc: 44.47 ng/ml



#9 Endosulfan I

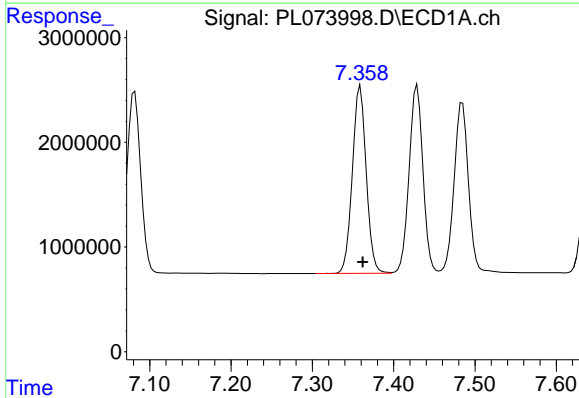
R.T.: 7.484 min
 Delta R.T.: -0.003 min
 Response: 19923078
 Conc: 48.58 ng/ml

Instrument :
 ECD_L
 ClientSampleId :



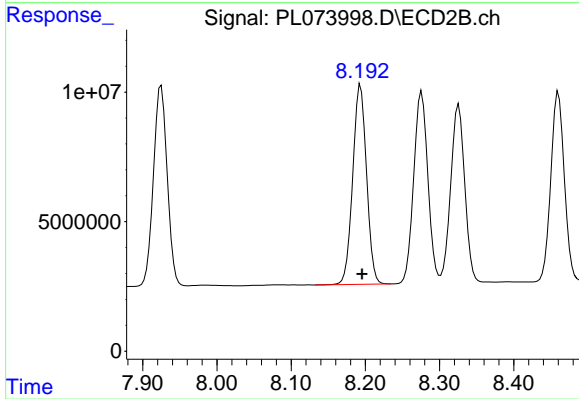
#9 Endosulfan I

R.T.: 8.326 min
 Delta R.T.: -0.002 min
 Response: 90722479
 Conc: 46.08 ng/ml



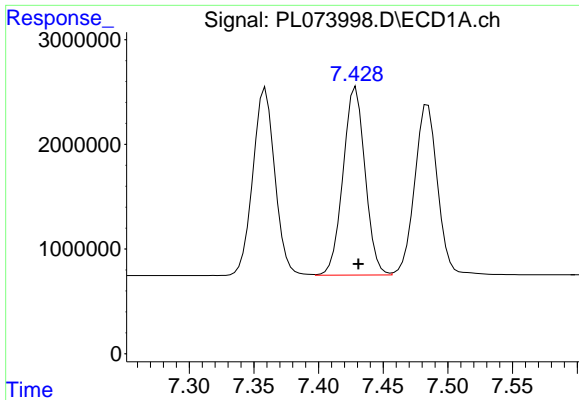
#10 gamma-Chlordane

R.T.: 7.359 min
 Delta R.T.: -0.003 min
 Response: 21114309
 Conc: 48.14 ng/ml



#10 gamma-Chlordane

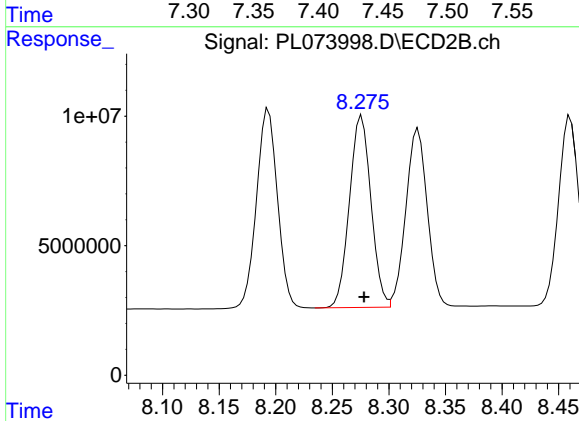
R.T.: 8.194 min
 Delta R.T.: -0.002 min
 Response: 99558444
 Conc: 44.64 ng/ml



#11 alpha-Chlordane

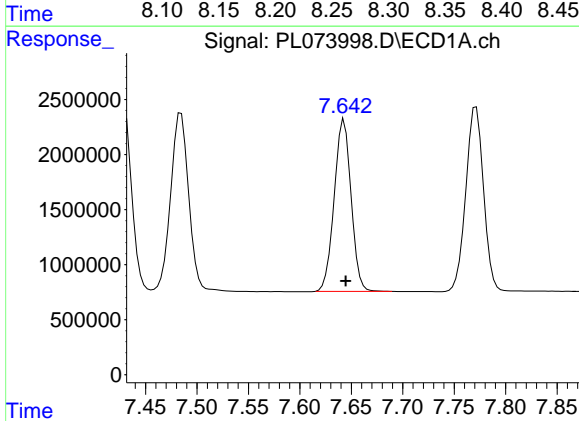
R.T.: 7.429 min
 Delta R.T.: -0.002 min
 Response: 21239692
 Conc: 48.08 ng/ml

Instrument :
 ECD_L
 ClientSampleId :



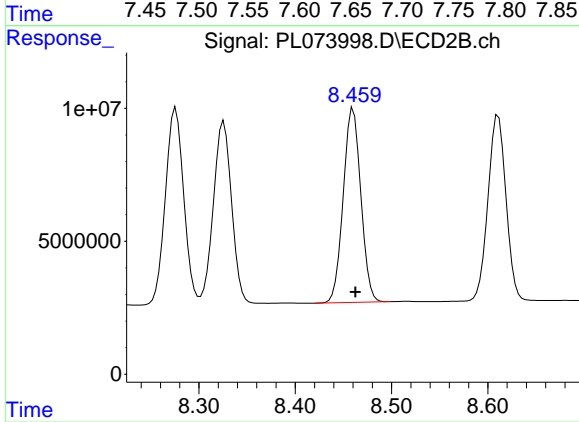
#11 alpha-Chlordane

R.T.: 8.276 min
 Delta R.T.: -0.002 min
 Response: 98151938
 Conc: 45.60 ng/ml



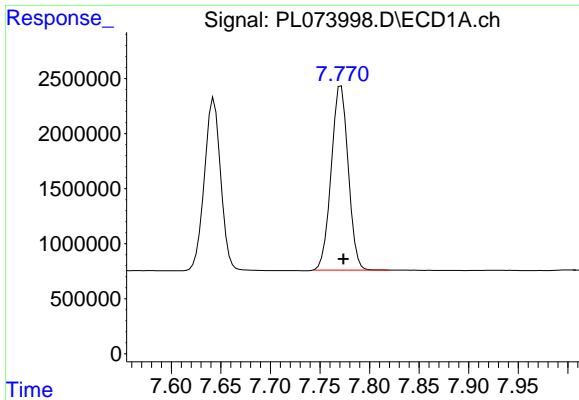
#12 4,4'-DDE

R.T.: 7.643 min
 Delta R.T.: -0.002 min
 Response: 17842054
 Conc: 48.91 ng/ml



#12 4,4'-DDE

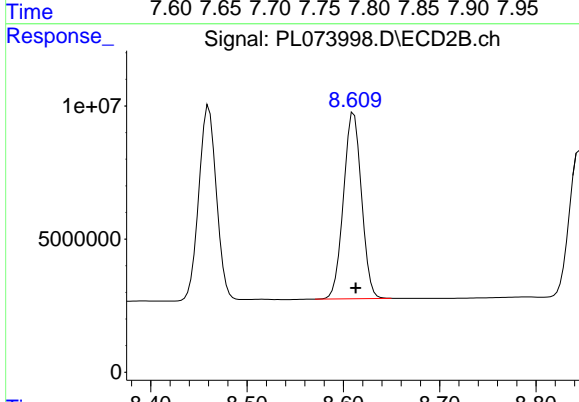
R.T.: 8.460 min
 Delta R.T.: -0.002 min
 Response: 92470633
 Conc: 46.43 ng/ml



#13 Dieldrin

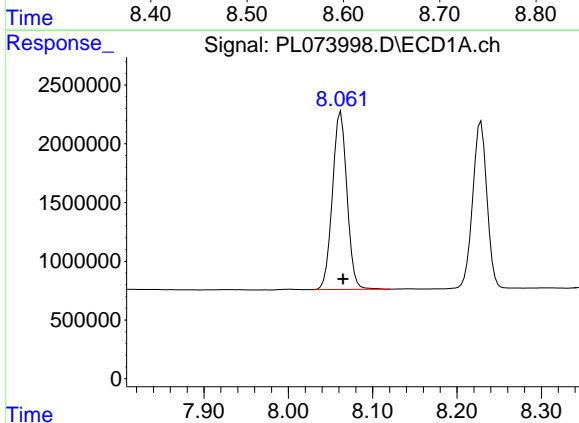
R.T.: 7.771 min
 Delta R.T.: -0.002 min
 Response: 19964916
 Conc: 46.48 ng/ml

Instrument :
 ECD_L
 ClientSampleId :



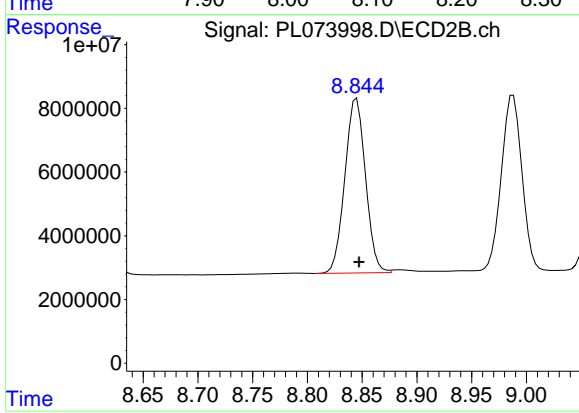
#13 Dieldrin

R.T.: 8.611 min
 Delta R.T.: -0.002 min
 Response: 90565924
 Conc: 45.16 ng/ml



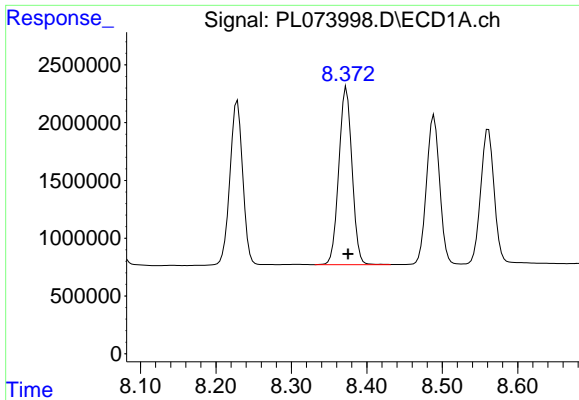
#14 Endrin

R.T.: 8.062 min
 Delta R.T.: -0.003 min
 Response: 18146463
 Conc: 44.67 ng/ml



#14 Endrin

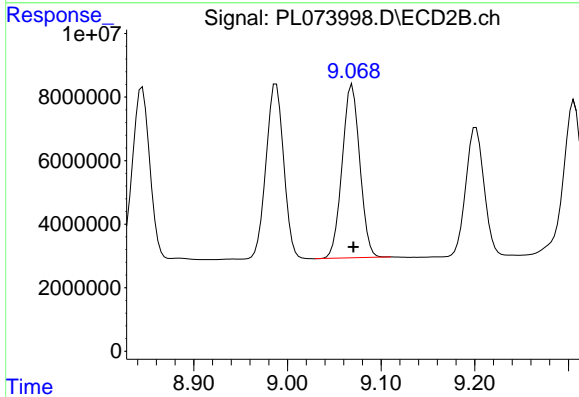
R.T.: 8.845 min
 Delta R.T.: -0.002 min
 Response: 71752537
 Conc: 42.37 ng/ml



#15 Endosulfan II

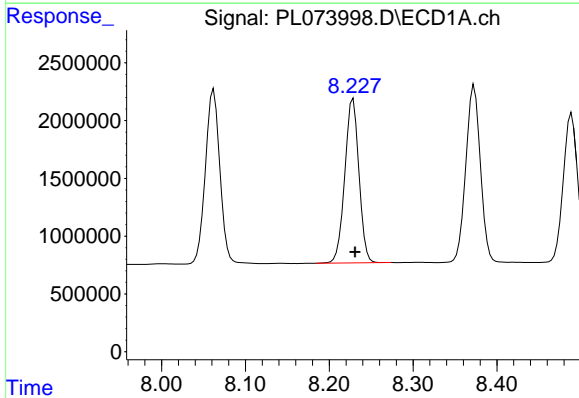
R.T.: 8.373 min
Delta R.T.: -0.002 min
Response: 18672150
Conc: 45.30 ng/ml

Instrument :
ECD_L
ClientSampleId :



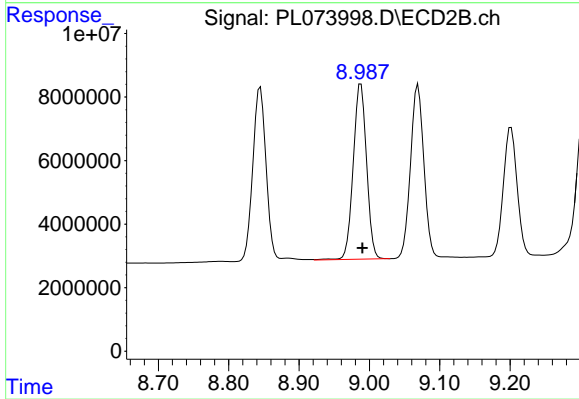
#15 Endosulfan II

R.T.: 9.069 min
Delta R.T.: -0.001 min
Response: 71551756
Conc: 41.19 ng/ml



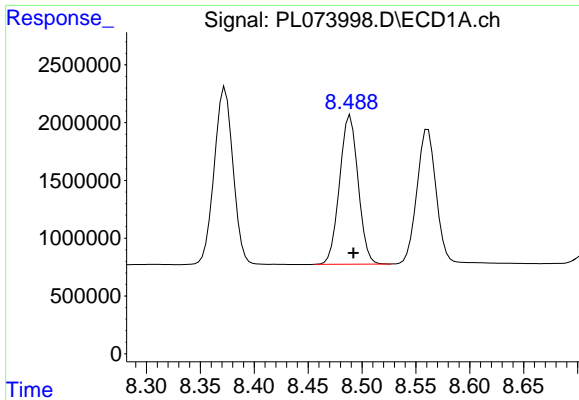
#16 4,4'-DDD

R.T.: 8.228 min
Delta R.T.: -0.002 min
Response: 16717466
Conc: 51.77 ng/ml



#16 4,4'-DDD

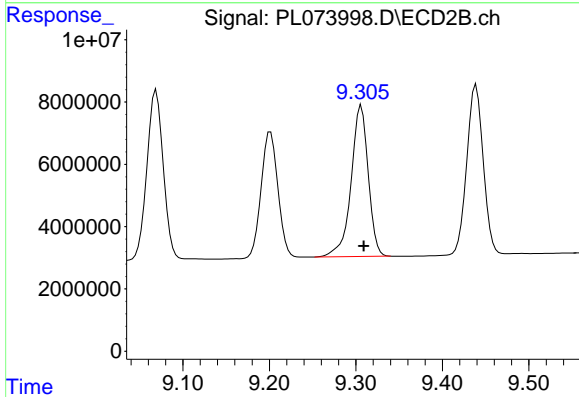
R.T.: 8.988 min
Delta R.T.: -0.002 min
Response: 72994254
Conc: 47.44 ng/ml



#17 4,4'-DDT

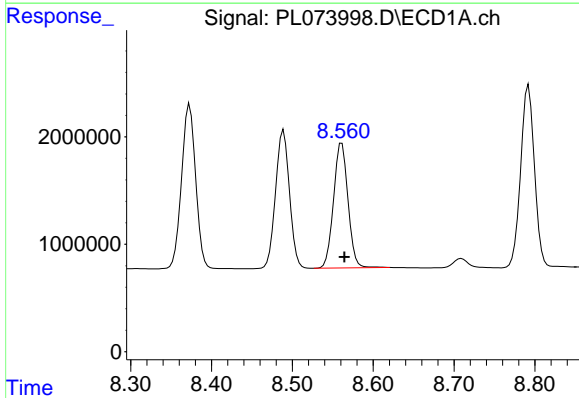
R.T.: 8.489 min
 Delta R.T.: -0.003 min
 Response: 15452394
 Conc: 41.80 ng/ml

Instrument :
 ECD_L
 ClientSampleId :



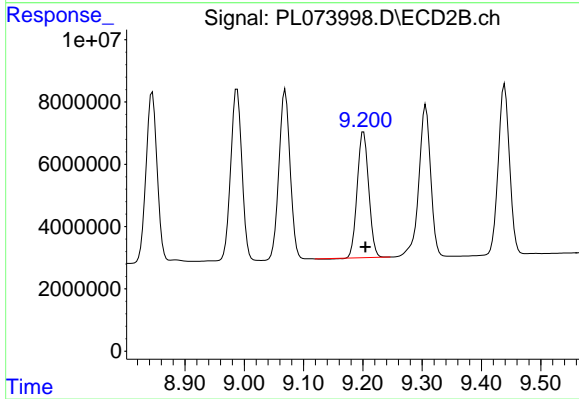
#17 4,4'-DDT

R.T.: 9.306 min
 Delta R.T.: -0.003 min
 Response: 66732723
 Conc: 37.65 ng/ml



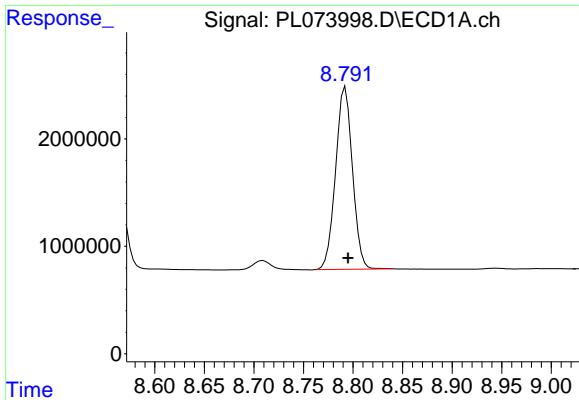
#18 Endrin aldehyde

R.T.: 8.561 min
 Delta R.T.: -0.003 min
 Response: 14424521
 Conc: 44.58 ng/ml



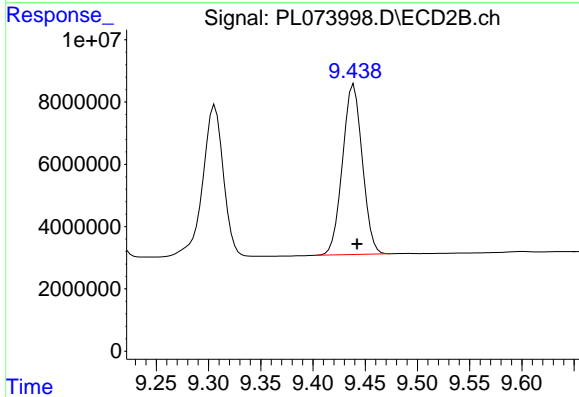
#18 Endrin aldehyde

R.T.: 9.201 min
 Delta R.T.: -0.003 min
 Response: 54117818
 Conc: 41.90 ng/ml

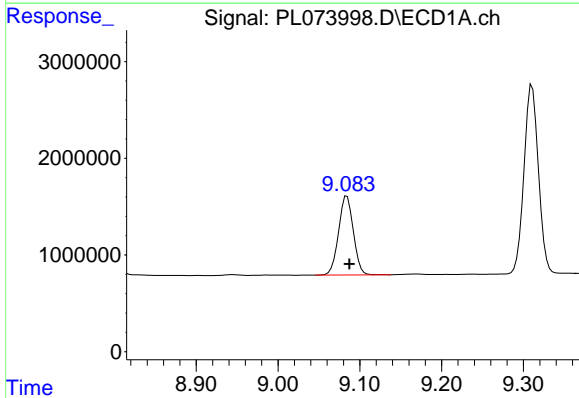


#19 Endosulfan Sulfate
 R.T.: 8.792 min
 Delta R.T.: -0.003 min
 Response: 20110218
 Conc: 47.09 ng/ml

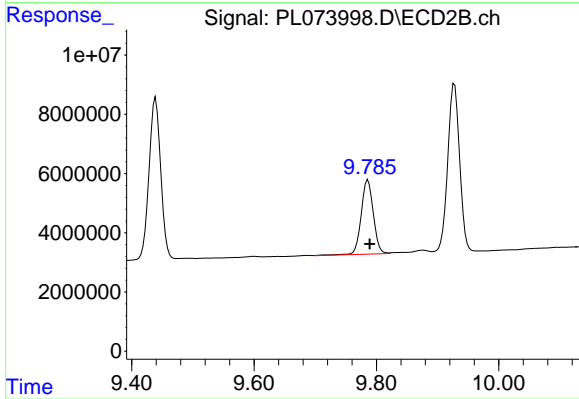
Instrument :
 ECD_L
 ClientSampleId :



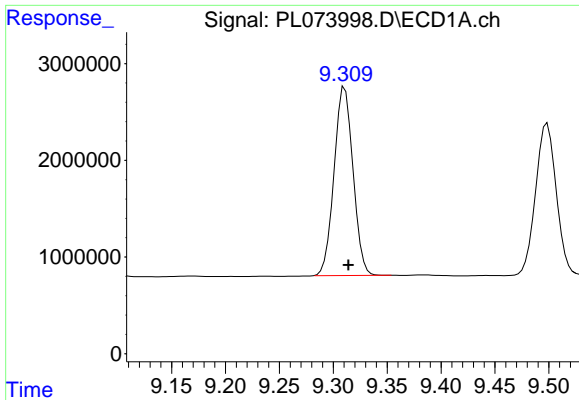
#19 Endosulfan Sulfate
 R.T.: 9.439 min
 Delta R.T.: -0.003 min
 Response: 71980884
 Conc: 43.25 ng/ml



#20 Methoxychlor
 R.T.: 9.084 min
 Delta R.T.: -0.003 min
 Response: 10208474
 Conc: 41.12 ng/ml



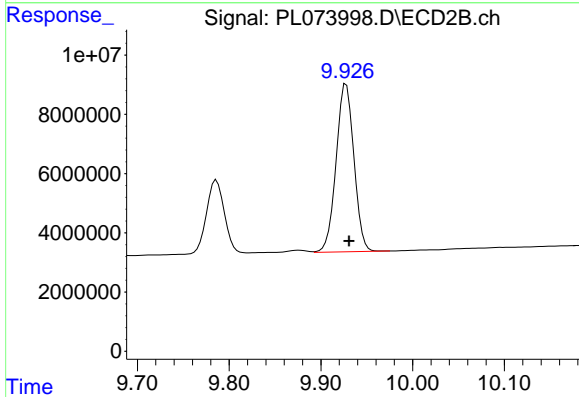
#20 Methoxychlor
 R.T.: 9.786 min
 Delta R.T.: -0.003 min
 Response: 34726218
 Conc: 36.10 ng/ml



#21 Endrin ketone

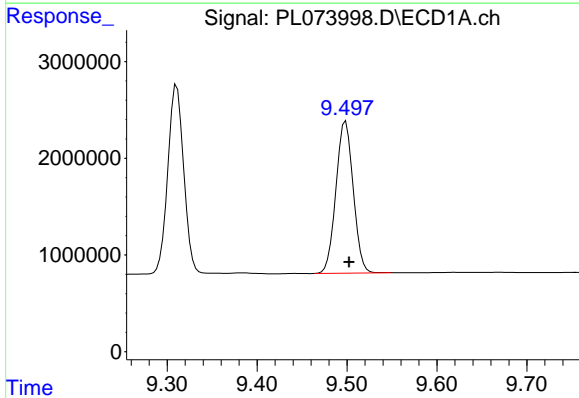
R.T.: 9.311 min
 Delta R.T.: -0.003 min
 Response: 23832188
 Conc: 48.78 ng/ml

Instrument :
 ECD_L
 ClientSampleId :



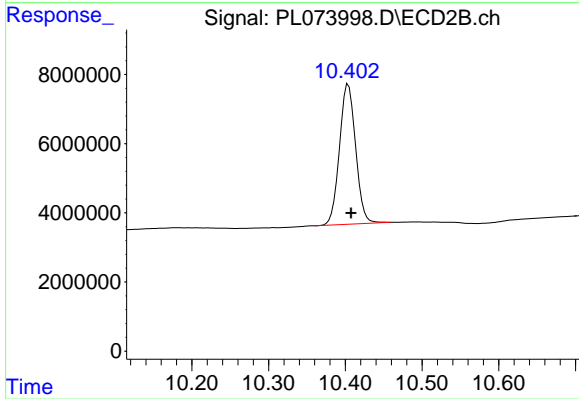
#21 Endrin ketone

R.T.: 9.928 min
 Delta R.T.: -0.003 min
 Response: 76516910
 Conc: 44.21 ng/ml



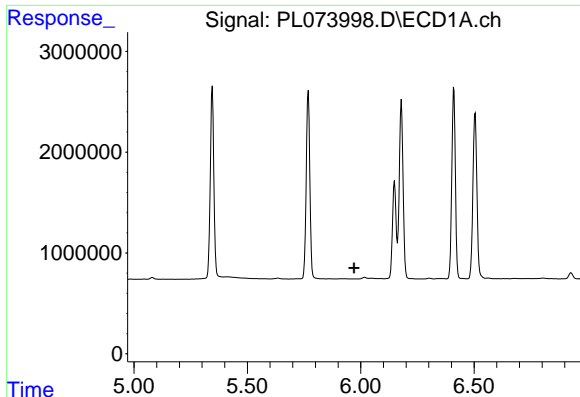
#22 Mirex

R.T.: 9.499 min
 Delta R.T.: -0.004 min
 Response: 20979382
 Conc: 44.98 ng/ml



#22 Mirex

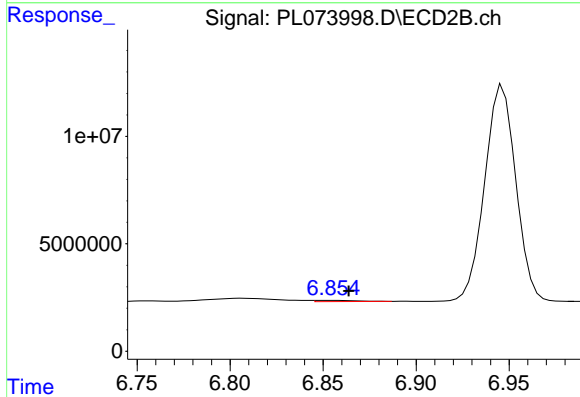
R.T.: 10.404 min
 Delta R.T.: -0.004 min
 Response: 59578088
 Conc: 43.25 ng/ml



#23 Chlordane-1

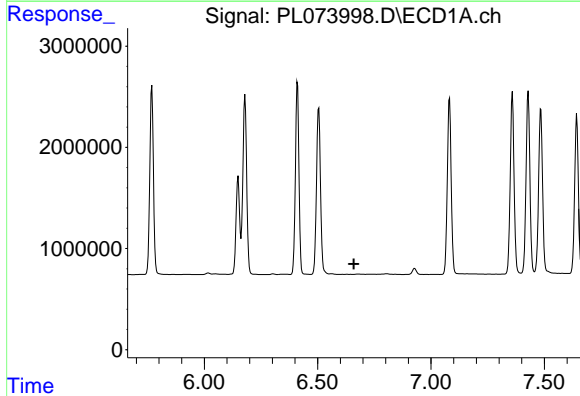
R.T.: 0.000 min
 Exp R.T. : 5.970 min
 Response: 0
 Conc: N.D.

Instrument :
 ECD_L
 ClientSampleId :



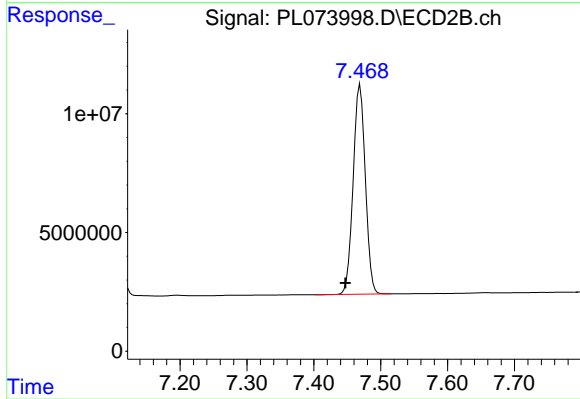
#23 Chlordane-1

R.T.: 6.855 min
 Delta R.T.: -0.009 min
 Response: 879894
 Conc: 11.03 ng/ml



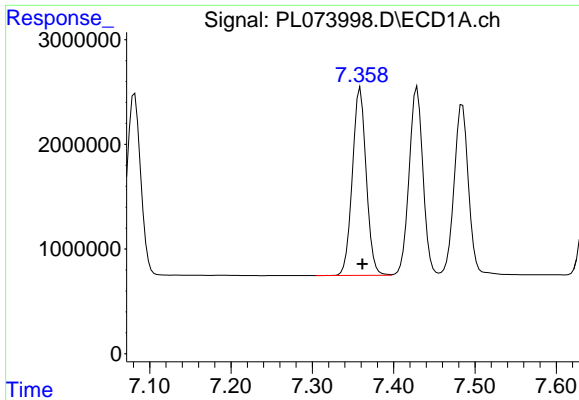
#24 Chlordane-2

R.T.: 0.000 min
 Exp R.T. : 6.659 min
 Response: 0
 Conc: N.D.



#24 Chlordane-2

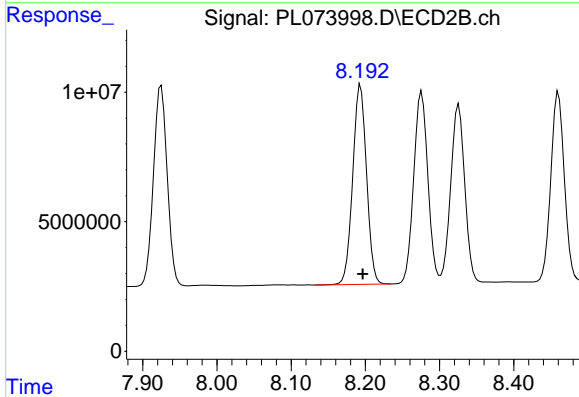
R.T.: 7.469 min
 Delta R.T.: 0.022 min
 Response: 112107256
 Conc: 1356.62 ng/ml



#25 Chlordane-3

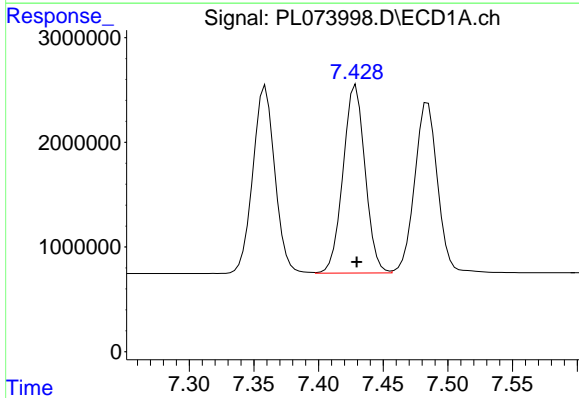
R.T.: 7.359 min
 Delta R.T.: -0.002 min
 Response: 21114309
 Conc: 488.06 ng/ml

Instrument :
 ECD_L
 ClientSampleId :



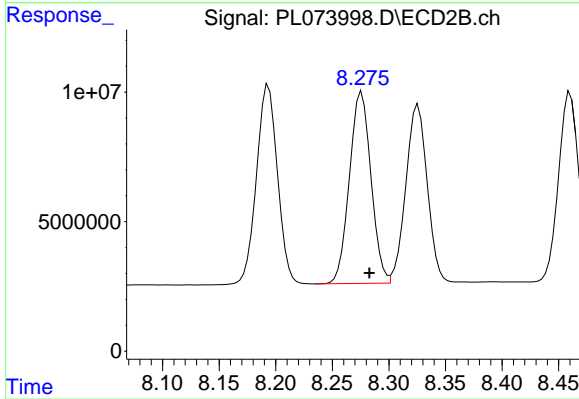
#25 Chlordane-3

R.T.: 8.194 min
 Delta R.T.: -0.003 min
 Response: 99558444
 Conc: 294.29 ng/ml



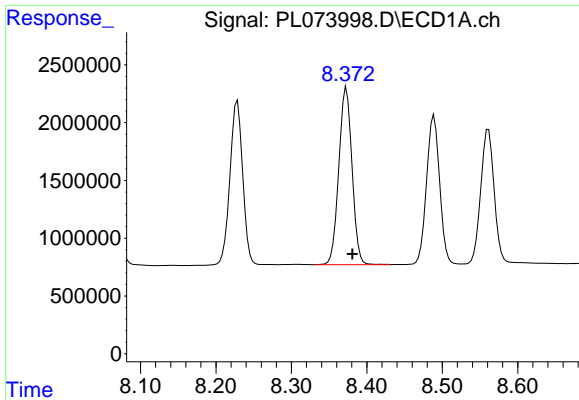
#26 Chlordane-4

R.T.: 7.429 min
 Delta R.T.: 0.000 min
 Response: 21239692
 Conc: 457.63 ng/ml



#26 Chlordane-4

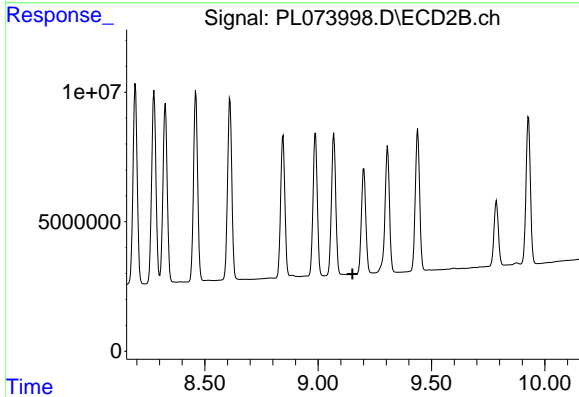
R.T.: 8.276 min
 Delta R.T.: -0.007 min
 Response: 98151938
 Conc: 247.47 ng/ml



#27 Chlordane-5

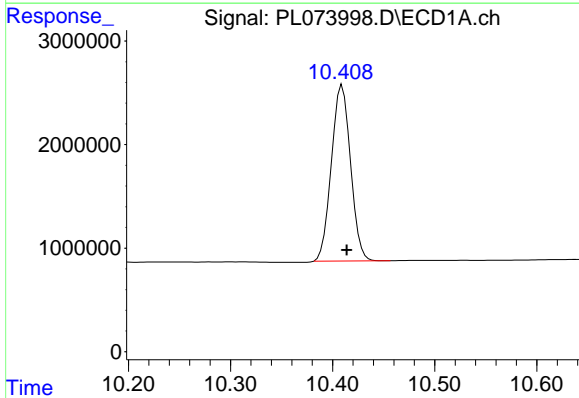
R.T.: 8.373 min
 Delta R.T.: -0.008 min
 Response: 18672150
 Conc: 1070.61 ng/m

Instrument :
 ECD_L
 ClientSampleId :



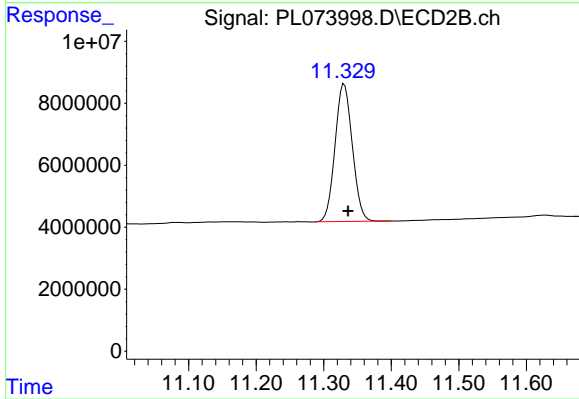
#27 Chlordane-5

R.T.: 0.000 min
 Exp R.T. : 9.152 min
 Response: 0
 Conc: N.D.



#28 Decachlorobiphenyl

R.T.: 10.410 min
 Delta R.T.: -0.004 min
 Response: 22176845
 Conc: 42.65 ng/ml



#28 Decachlorobiphenyl

R.T.: 11.330 min
 Delta R.T.: -0.006 min
 Response: 79096430
 Conc: 44.78 ng/ml