

Data Path : Z:\pestpcbsrv\HPCHEM1\ECD_L\Data\PL041224\
 Data File : PL089013.D
 Signal(s) : Signal #1: ECD1A.ch Signal #2: ECD2B.ch
 Acq On : 10 Apr 2024 17:52
 Operator : AR\AJ
 Sample : PB160152BL
 Misc :
 ALS Vial : 12 Sample Multiplier: 1

Instrument :
 ECD_L
 ClientSampleId :
 PB160152BL

Integration File signal 1: autoint1.e
 Integration File signal 2: autoint2.e
 Quant Time: Apr 11 04:15:41 2024
 Quant Method : Z:\pestpcbsrv\HPCHEM1\ECD_L\methods\PL031324.M
 Quant Title : GC Extractables
 QLast Update : Wed Mar 13 15:45:55 2024
 Response via : Initial Calibration
 Integrator: ChemStation

Volume Inj. : 1 µl
 Signal #1 Phase : ZB-MR2 Signal #2 Phase: ZB-MR1
 Signal #1 Info : 30M x 0.32mm x0.2 Signal #2 Info : 30M x 0.32mm x0.5µm

Compound	RT#1	RT#2	Resp#1	Resp#2	ng/ml	ng/ml

System Monitoring Compounds						
1) SA Tetrachlo...	3.635	2.853	52306388	28476816	19.739	21.367
28) SA Decachlor...	9.301	8.078	36281310	21754287	14.677	16.044

Target Compounds

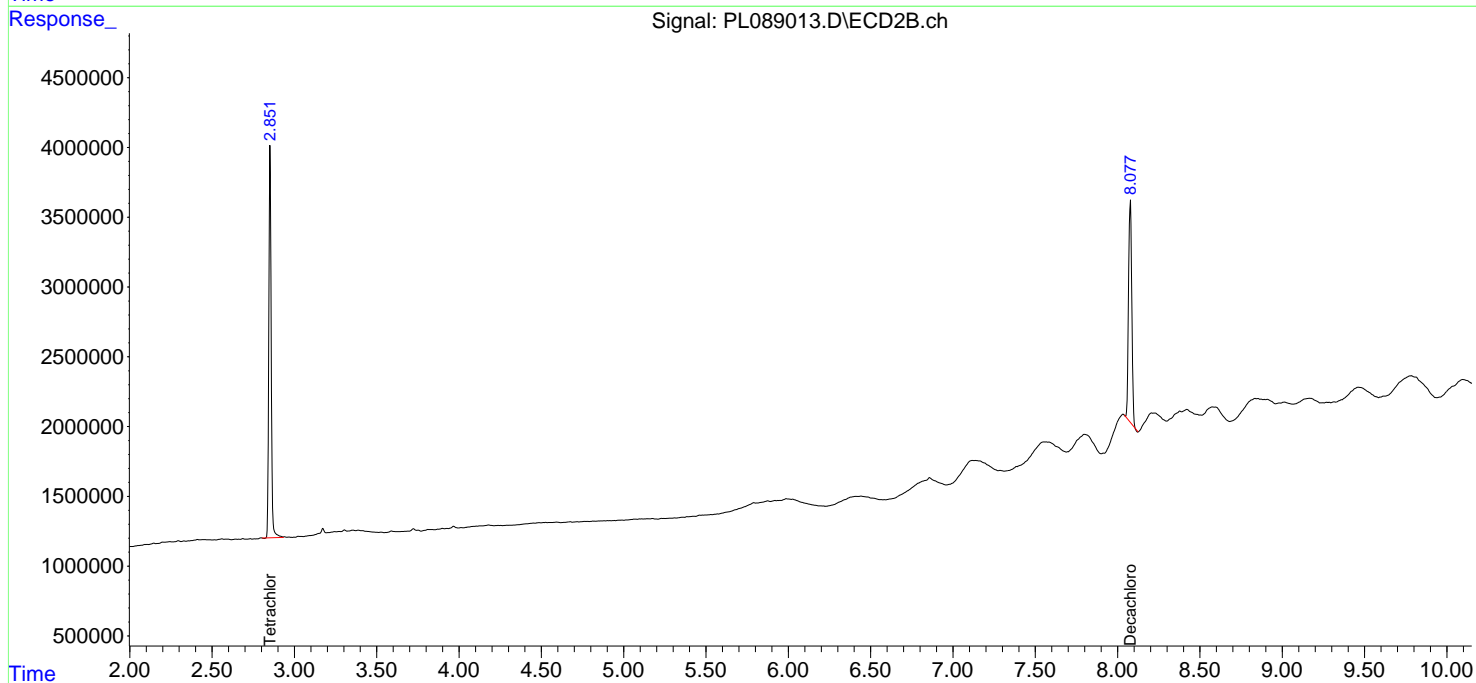
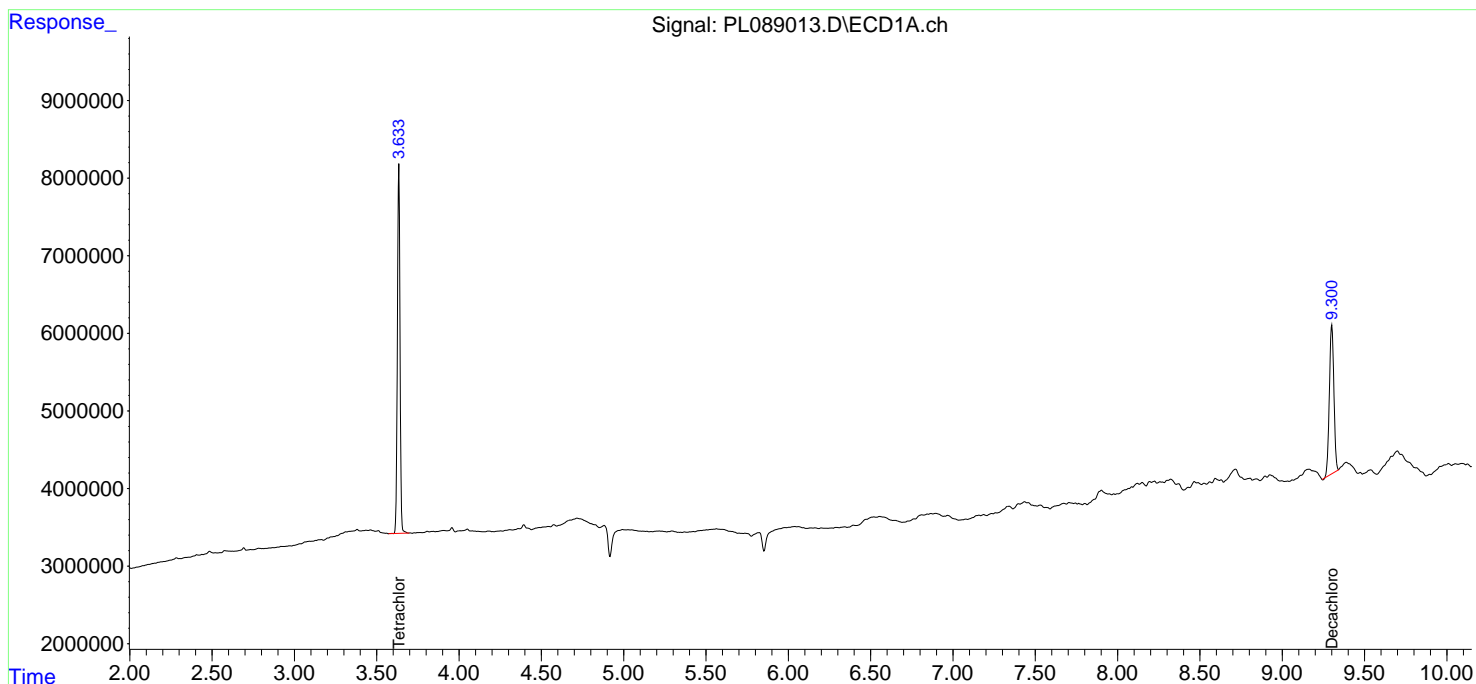
(f)=RT Delta > 1/2 Window (#)=Amounts differ by > 25% (m)=manual int.

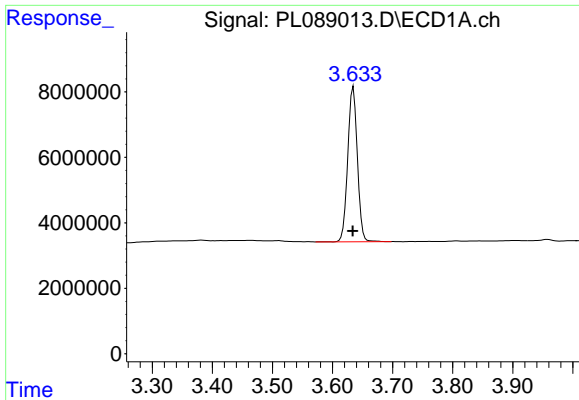
Data Path : Z:\pestpcbsrv\HPCHEM1\ECD_L\Data\PL041224\
 Data File : PL089013.D
 Signal(s) : Signal #1: ECD1A.ch Signal #2: ECD2B.ch
 Acq On : 10 Apr 2024 17:52
 Operator : AR\AJ
 Sample : PB160152BL
 Misc :
 ALS Vial : 12 Sample Multiplier: 1

Instrument :
 ECD_L
ClientSampleId :
 PB160152BL

Integration File signal 1: autoint1.e
 Integration File signal 2: autoint2.e
 Quant Time: Apr 11 04:15:41 2024
 Quant Method : Z:\pestpcbsrv\HPCHEM1\ECD_L\methods\PL031324.M
 Quant Title : GC Extractables
 QLast Update : Wed Mar 13 15:45:55 2024
 Response via : Initial Calibration
 Integrator: ChemStation

Volume Inj. : 1 µl
 Signal #1 Phase : ZB-MR2 Signal #2 Phase: ZB-MR1
 Signal #1 Info : 30M x 0.32mm x0.2 Signal #2 Info : 30M x 0.32mm x0.5µm

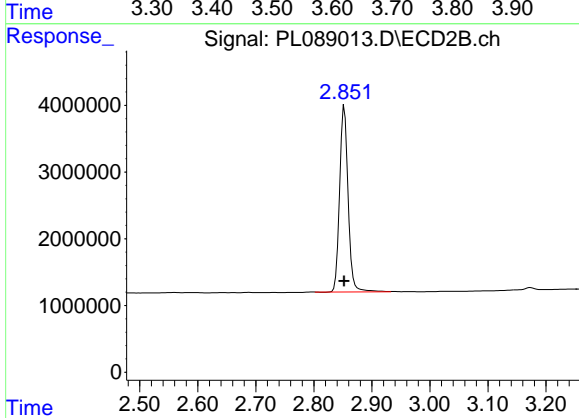




#1 Tetrachloro-m-xylene

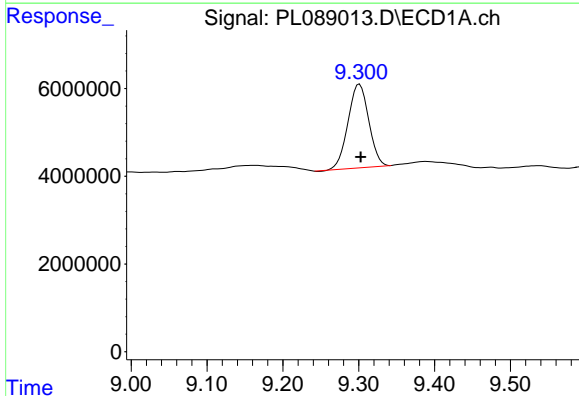
R.T.: 3.635 min
 Delta R.T.: 0.000 min
 Response: 52306388
 Conc: 19.74 ng/ml

Instrument :
 ECD_L
 ClientSampleId :
 PB160152BL



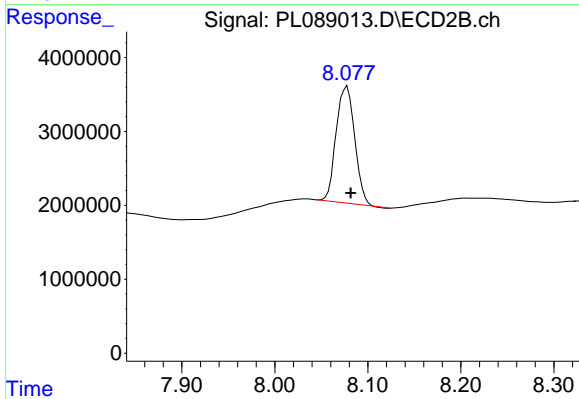
#1 Tetrachloro-m-xylene

R.T.: 2.853 min
 Delta R.T.: 0.000 min
 Response: 28476816
 Conc: 21.37 ng/ml



#28 Decachlorobiphenyl

R.T.: 9.301 min
 Delta R.T.: -0.002 min
 Response: 36281310
 Conc: 14.68 ng/ml



#28 Decachlorobiphenyl

R.T.: 8.078 min
 Delta R.T.: -0.004 min
 Response: 21754287
 Conc: 16.04 ng/ml