

Data Path : Z:\pestpcbsrv\HPCHEM1\ECD_L\Data\PL041322\
 Data File : PL074035.D
 Signal(s) : Signal #1: ECD1A.ch Signal #2: ECD2B.ch
 Acq On : 14 Apr 2022 00:07
 Operator : AR\AJ
 Sample : PB144061BS
 Misc :
 ALS Vial : 34 Sample Multiplier: 1

Instrument :
 ECD_L
ClientSampleId :
 PB144061BS

Manual Integrations
APPROVED

Reviewed By :Abdul Mirza 04/18/2022
 Supervised By :mohammad ahmed 04/18/2022

Integration File signal 1: autoint1.e
 Integration File signal 2: autoint2.e
 Quant Time: Apr 14 00:46:10 2022
 Quant Method : Z:\pestpcbsrv\HPCHEM1\ECD_L\methods\PL040822.M
 Quant Title : GC Extractables
 QLast Update : Fri Apr 08 15:48:40 2022
 Response via : Initial Calibration
 Integrator: ChemStation

Volume Inj. : 1 µl
 Signal #1 Phase : ZB-MR2 Signal #2 Phase: ZB-MR1
 Signal #1 Info : 30M x 0.32mm x0.2 Signal #2 Info : 30M x 0.32mm x0.5µm

Compound	RT#1	RT#2	Resp#1	Resp#2	ng/ml	ng/ml

System Monitoring Compounds						
1) SA Tetrachlo...	4.638	5.490	6552718	35769927	20.280	20.062
28) SA Decachlor...	10.411	11.334	9722403	31874600	18.696	18.046
Target Compounds						
2) A alpha-BHC	5.346	6.054	21278647	134.1E6	50.704	53.274
3) MA gamma-BHC...	5.770	6.443	20706753	123.0E6	49.373	51.956
4) MA Heptachlor	6.180	7.102	20435824	117.5E6	45.367	45.033
5) MB Aldrin	6.505	7.470	21385889	122.2E6	51.526	52.027
6) B beta-BHC	6.150	6.680	10055766	53828224	49.214	47.762
7) B delta-BHC	6.411	6.948	20910312	121.5E6	50.548	49.748
8) B Heptachlo...	7.082	7.926	21305857	118.9E6	49.671	52.806
9) A Endosulfan I	7.485	8.327	20007961	98397528	48.785	49.982
10) B gamma-Chl...	7.360	8.193	21705853	106.7E6	49.490	47.829m
11) B alpha-Chl...	7.430	8.276	21887184	104.0E6	49.544	48.315m
12) B 4,4'-DDE	7.644	8.462	18499116	98519133	50.708	49.465
13) MA Dieldrin	7.773	8.612	22323209	98398099	51.966	49.069
14) MA Endrin	8.062	8.845	18943386	77163718	46.632m	45.560m
15) B Endosulfa...	8.374	9.069	20290286	78755957	49.229	45.334m
16) A 4,4'-DDD	8.229	8.988	18633659	80178887	57.703	52.112m
17) MA 4,4'-DDT	8.490	9.308	12995378	51099703	35.157	28.826
18) B Endrin al...	8.562	9.203	17267180	63872318	53.367	49.451
19) B Endosulfa...	8.793	9.440	20601727	71456741	48.245	42.934
20) A Methoxychlor	9.086	9.785	9311478	66933609	37.506	69.589m#
21) B Endrin ke...	9.312	9.929	24359644	75235487	49.861m	43.465
22) Mirex	9.500	10.406	20764444	60858304	44.520	44.183

(f)=RT Delta > 1/2 Window (#)=Amounts differ by > 25% (m)=manual int.

Data Path : Z:\pestpcbsrv\HPCHEM1\ECD_L\Data\PL041322\
 Data File : PL074035.D
 Signal(s) : Signal #1: ECD1A.ch Signal #2: ECD2B.ch
 Acq On : 14 Apr 2022 00:07
 Operator : AR\AJ
 Sample : PB144061BS
 Misc :
 ALS Vial : 34 Sample Multiplier: 1

Instrument :

ECD_L

ClientSampleId :

PB144061BS

Manual Integrations

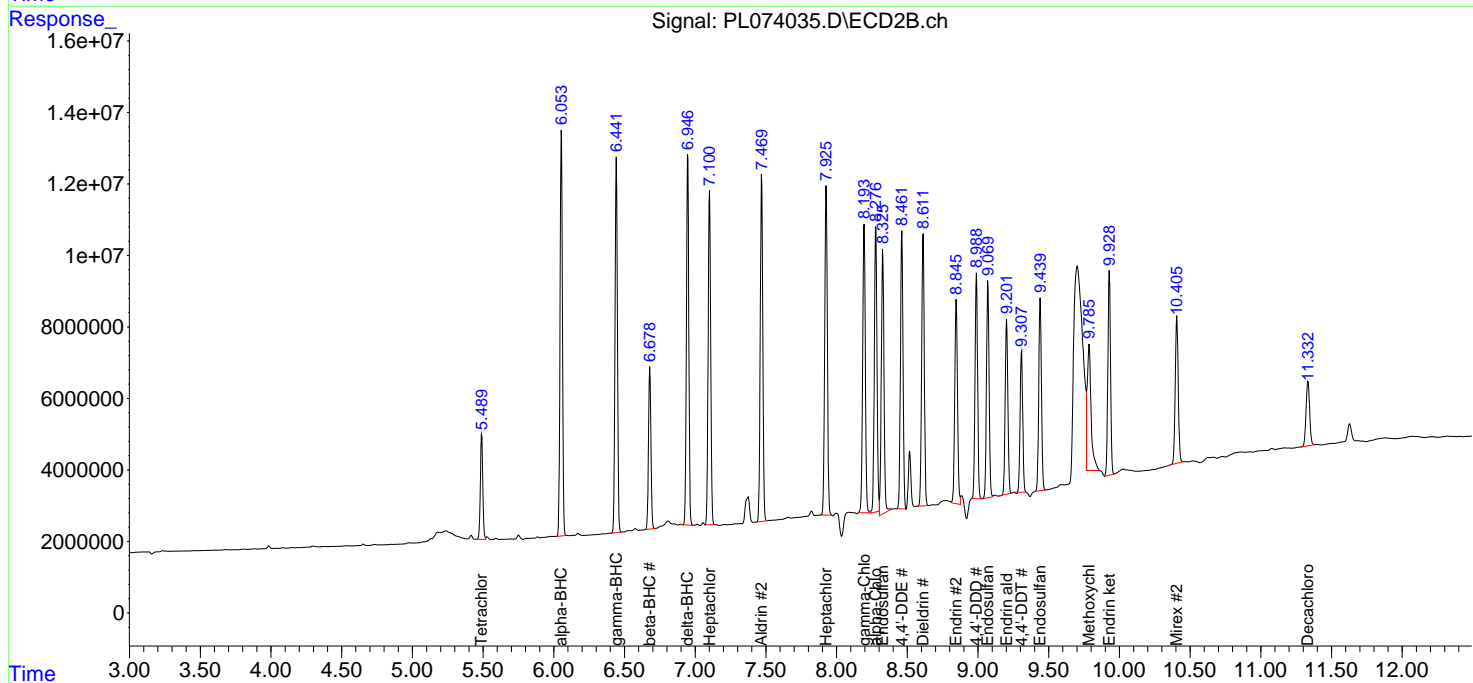
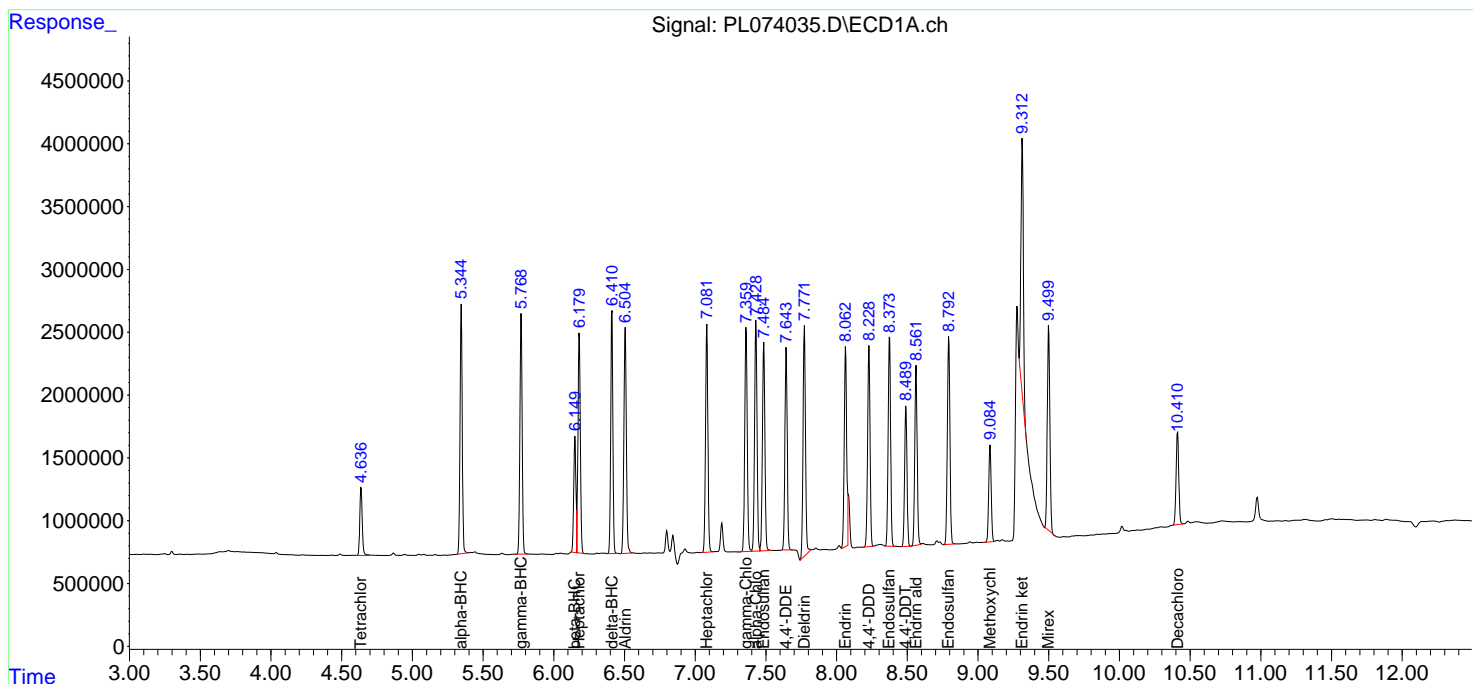
APPROVED

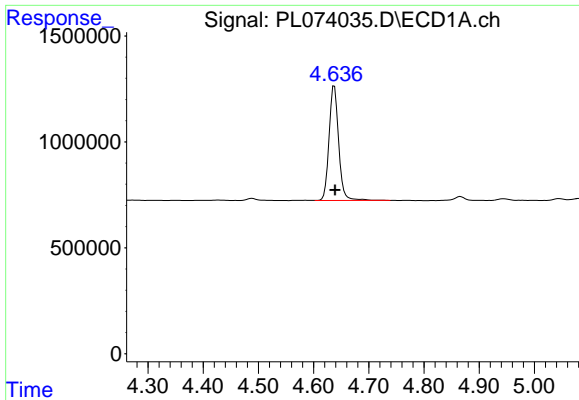
Reviewed By :Abdul Mirza 04/18/2022

Supervised By :mohammad ahmed 04/18/2022

Integration File signal 1: autoint1.e
 Integration File signal 2: autoint2.e
 Quant Time: Apr 14 00:46:10 2022
 Quant Method : Z:\pestpcbsrv\HPCHEM1\ECD_L\methods\PL040822.M
 Quant Title : GC Extractables
 QLast Update : Fri Apr 08 15:48:40 2022
 Response via : Initial Calibration
 Integrator: ChemStation

Volume Inj. : 1 µl
 Signal #1 Phase : ZB-MR2 Signal #2 Phase: ZB-MR1
 Signal #1 Info : 30M x 0.32mm x0.2 Signal #2 Info : 30M x 0.32mm x0.5µm





#1 Tetrachloro-m-xylene

R.T.: 4.638 min
 Delta R.T.: -0.001 min
 Response: 6552718
 Conc: 20.28 ng/ml

Instrument :

ECD_L

ClientSampleId :

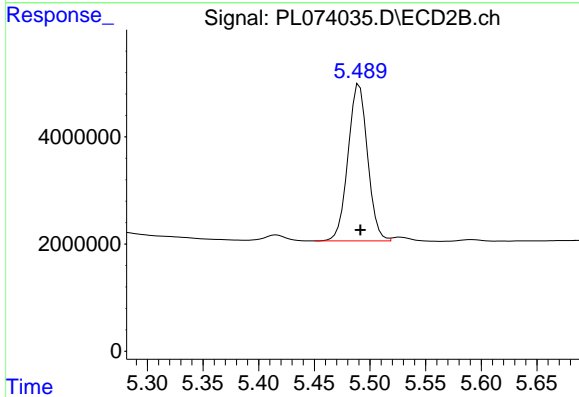
PB144061BS

Manual Integrations

APPROVED

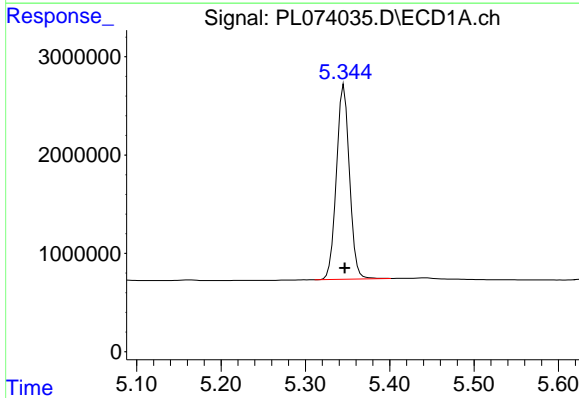
Reviewed By :Abdul Mirza 04/18/2022

Supervised By :mohammad ahmed 04/18/2022



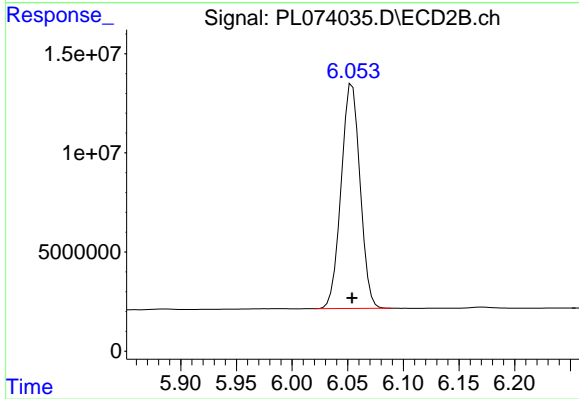
#1 Tetrachloro-m-xylene

R.T.: 5.490 min
 Delta R.T.: -0.001 min
 Response: 35769927
 Conc: 20.06 ng/ml



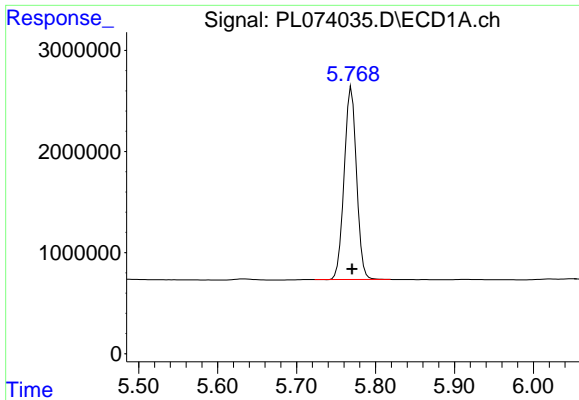
#2 alpha-BHC

R.T.: 5.346 min
 Delta R.T.: 0.000 min
 Response: 21278647
 Conc: 50.70 ng/ml



#2 alpha-BHC

R.T.: 6.054 min
 Delta R.T.: 0.000 min
 Response: 134148437
 Conc: 53.27 ng/ml

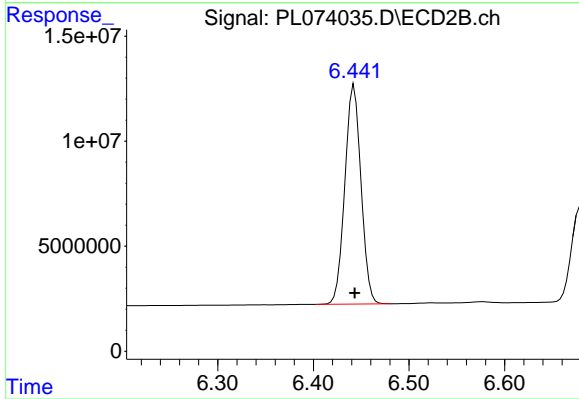


#3 gamma-BHC (Lindane)
R.T.: 5.770 min
Delta R.T.: 0.000 min
Response: 20706753
Conc: 49.37 ng/ml

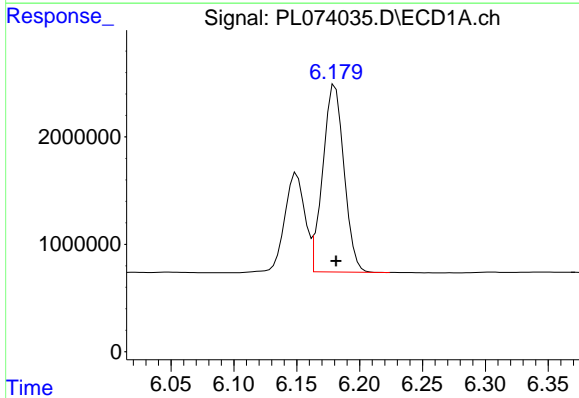
Instrument :
ECD_L
ClientSampleId :
PB144061BS

Manual Integrations
APPROVED

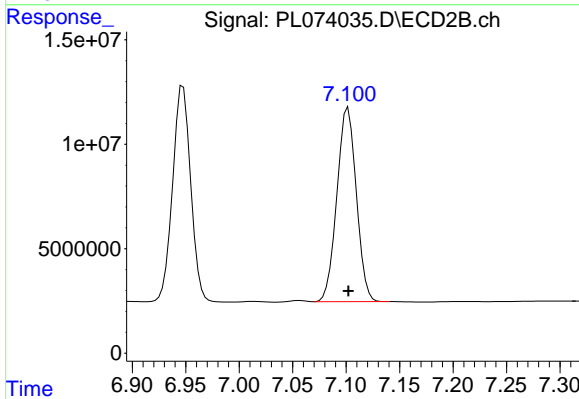
Reviewed By :Abdul Mirza 04/18/2022
Supervised By :mohammad ahmed 04/18/2022



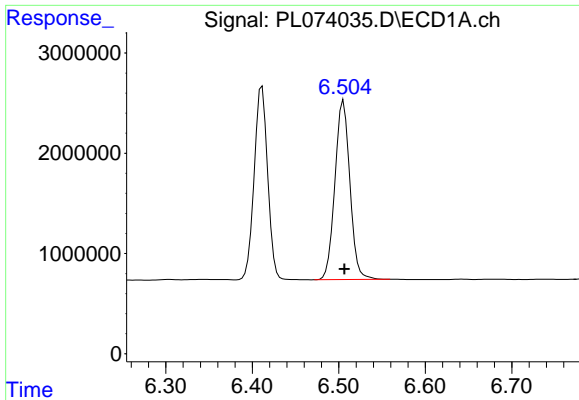
#3 gamma-BHC (Lindane)
R.T.: 6.443 min
Delta R.T.: 0.000 min
Response: 122985586
Conc: 51.96 ng/ml



#4 Heptachlor
R.T.: 6.180 min
Delta R.T.: 0.000 min
Response: 20435824
Conc: 45.37 ng/ml



#4 Heptachlor
R.T.: 7.102 min
Delta R.T.: 0.000 min
Response: 117466229
Conc: 45.03 ng/ml

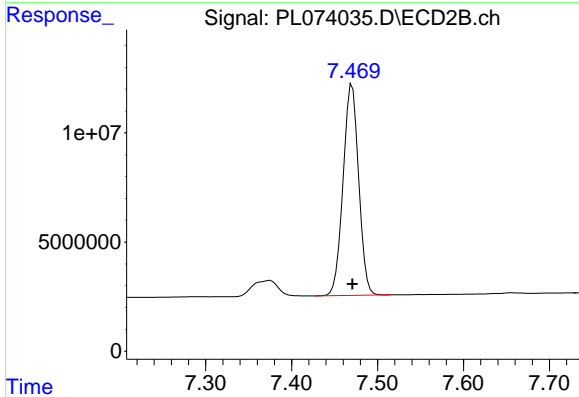


#5 Aldrin
 R.T.: 6.505 min
 Delta R.T.: -0.001 min
 Response: 21385889
 Conc: 51.53 ng/ml

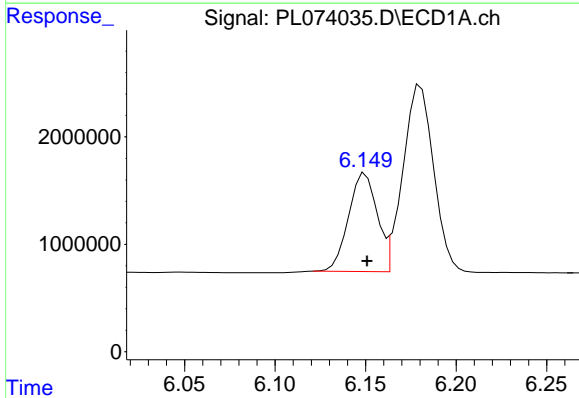
Instrument :
 ECD_L
 ClientSampleId :
 PB144061BS

Manual Integrations
 APPROVED

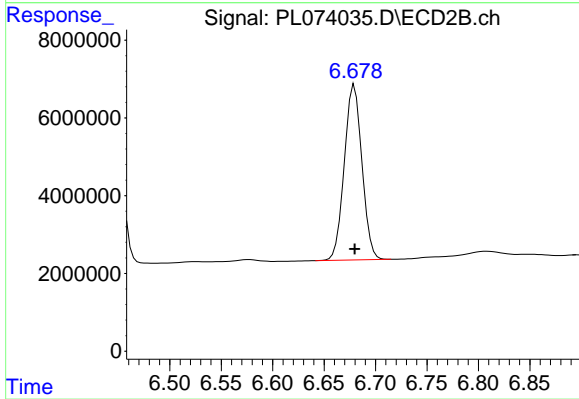
Reviewed By :Abdul Mirza 04/18/2022
 Supervised By :mohammad ahmed 04/18/2022



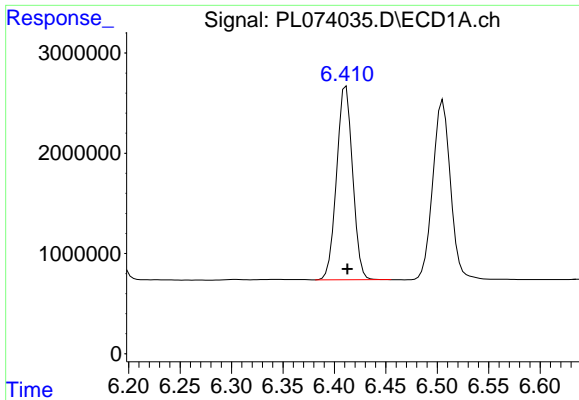
#5 Aldrin
 R.T.: 7.470 min
 Delta R.T.: 0.000 min
 Response: 122190497
 Conc: 52.03 ng/ml



#6 beta-BHC
 R.T.: 6.150 min
 Delta R.T.: 0.000 min
 Response: 10055766
 Conc: 49.21 ng/ml



#6 beta-BHC
 R.T.: 6.680 min
 Delta R.T.: 0.000 min
 Response: 53828224
 Conc: 47.76 ng/ml



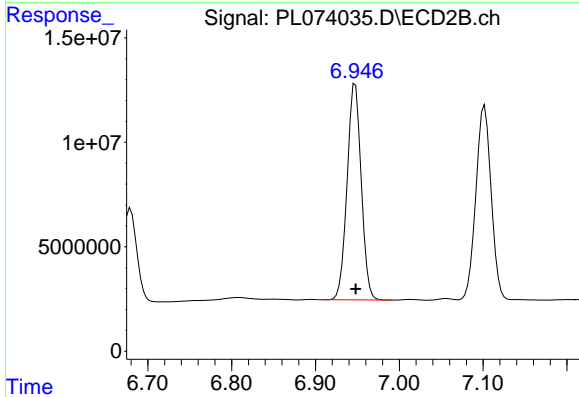
#7 delta-BHC

R.T.: 6.411 min
 Delta R.T.: -0.001 min
 Response: 20910312
 Conc: 50.55 ng/ml

Instrument :
 ECD_L
 ClientSampleId :
 PB144061BS

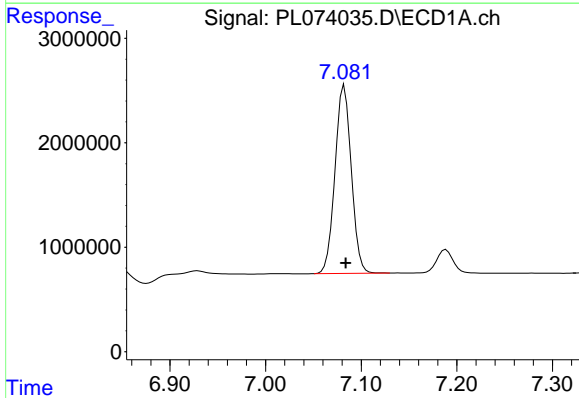
Manual Integrations
 APPROVED

Reviewed By :Abdul Mirza 04/18/2022
 Supervised By :mohammad ahmed 04/18/2022



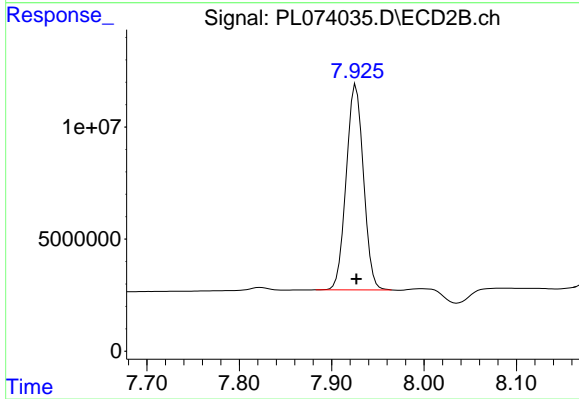
#7 delta-BHC

R.T.: 6.948 min
 Delta R.T.: 0.000 min
 Response: 121497444
 Conc: 49.75 ng/ml



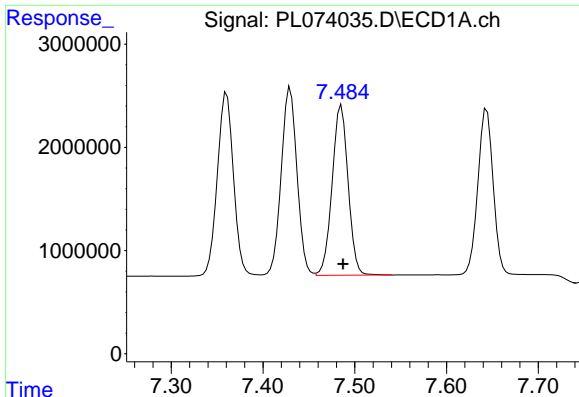
#8 Heptachlor epoxide

R.T.: 7.082 min
 Delta R.T.: -0.001 min
 Response: 21305857
 Conc: 49.67 ng/ml



#8 Heptachlor epoxide

R.T.: 7.926 min
 Delta R.T.: 0.000 min
 Response: 118895271
 Conc: 52.81 ng/ml



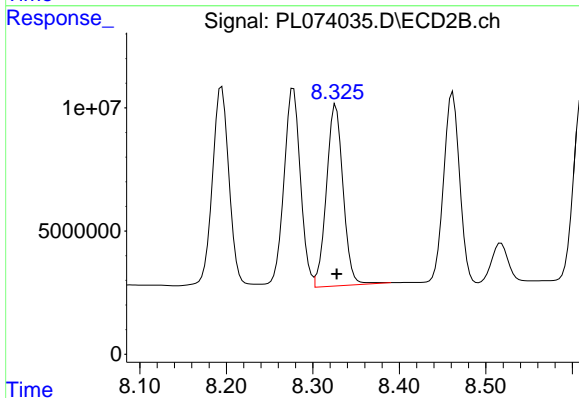
#9 Endosulfan I

R.T.: 7.485 min
 Delta R.T.: -0.002 min
 Response: 20007961
 Conc: 48.79 ng/ml

Instrument :
 ECD_L
 ClientSampleId :
 PB144061BS

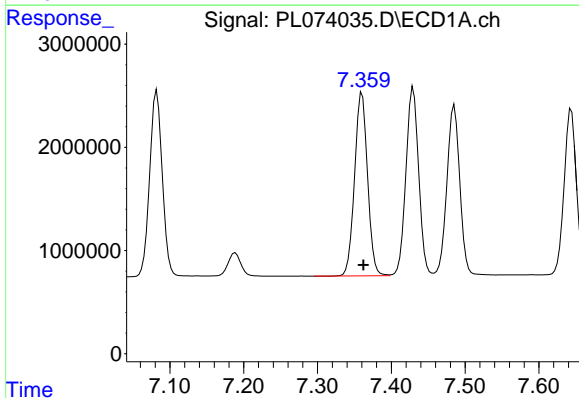
Manual Integrations
 APPROVED

Reviewed By :Abdul Mirza 04/18/2022
 Supervised By :mohammad ahmed 04/18/2022



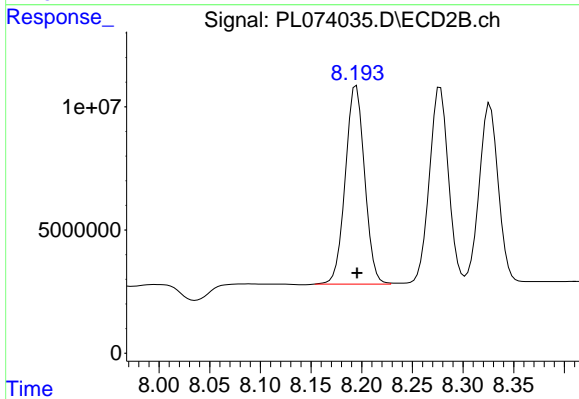
#9 Endosulfan I

R.T.: 8.327 min
 Delta R.T.: 0.000 min
 Response: 98397528
 Conc: 49.98 ng/ml



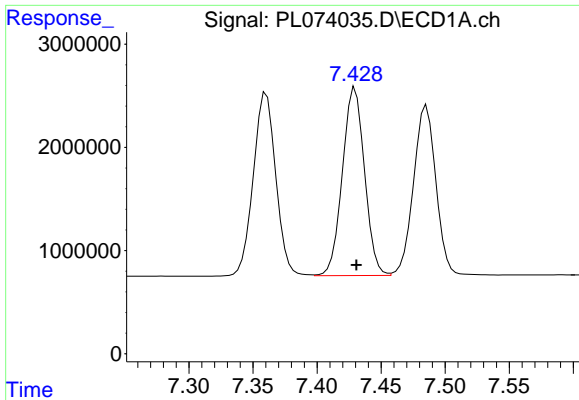
#10 gamma-Chlordane

R.T.: 7.360 min
 Delta R.T.: -0.002 min
 Response: 21705853
 Conc: 49.49 ng/ml



#10 gamma-Chlordane

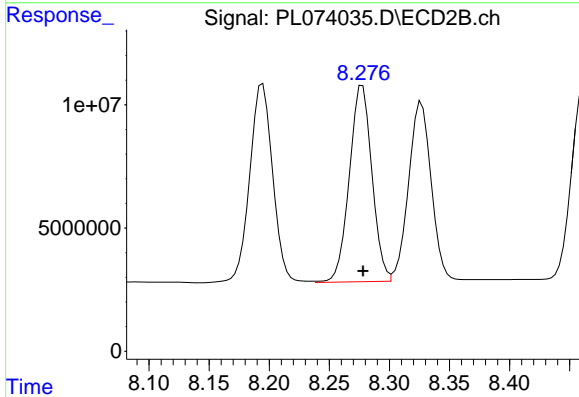
R.T.: 8.193 min
 Delta R.T.: -0.002 min
 Response: 106675780
 Conc: 47.83 ng/ml m



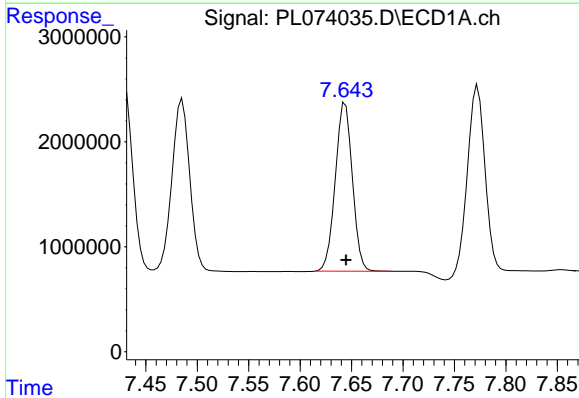
#11 alpha-Chlordane
 R.T.: 7.430 min
 Delta R.T.: 0.000 min
 Response: 21887184
 Conc: 49.54 ng/ml

Instrument : ECD_L
 Client Sample Id : PB144061BS

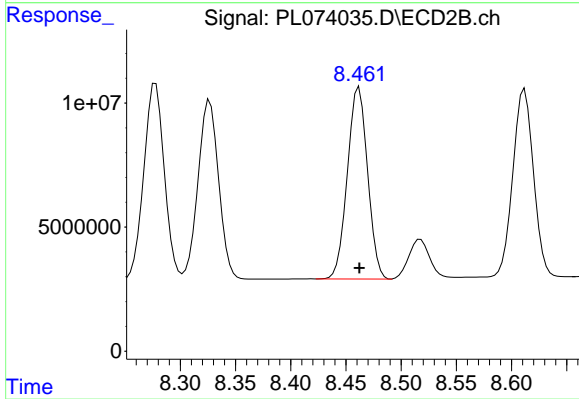
Manual Integrations
APPROVED
 Reviewed By :Abdul Mirza 04/18/2022
 Supervised By :mohammad ahmed 04/18/2022



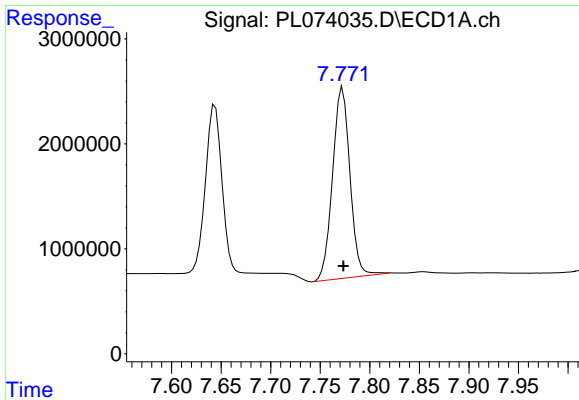
#11 alpha-Chlordane
 R.T.: 8.276 min
 Delta R.T.: -0.002 min
 Response: 104001567
 Conc: 48.31 ng/ml m



#12 4,4'-DDE
 R.T.: 7.644 min
 Delta R.T.: 0.000 min
 Response: 18499116
 Conc: 50.71 ng/ml



#12 4,4'-DDE
 R.T.: 8.462 min
 Delta R.T.: 0.000 min
 Response: 98519133
 Conc: 49.46 ng/ml



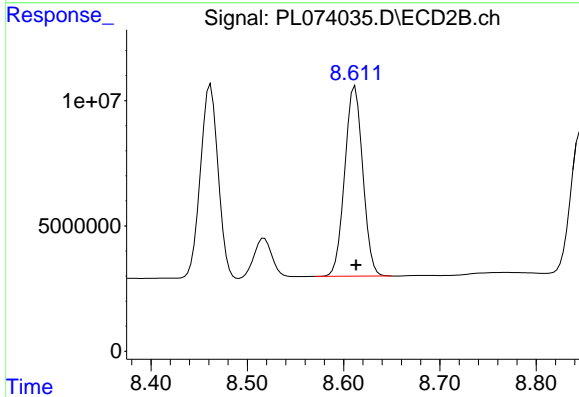
#13 Dieldrin

R.T.: 7.773 min
 Delta R.T.: 0.000 min
 Response: 22323209
 Conc: 51.97 ng/ml

Instrument : ECD_L
 Client Sample Id : PB144061BS

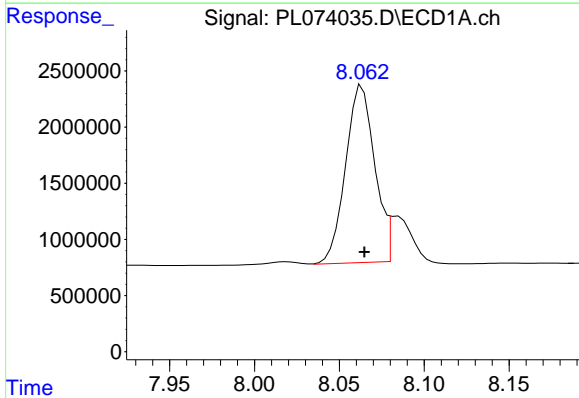
Manual Integrations
 APPROVED

Reviewed By :Abdul Mirza 04/18/2022
 Supervised By :mohammad ahmed 04/18/2022



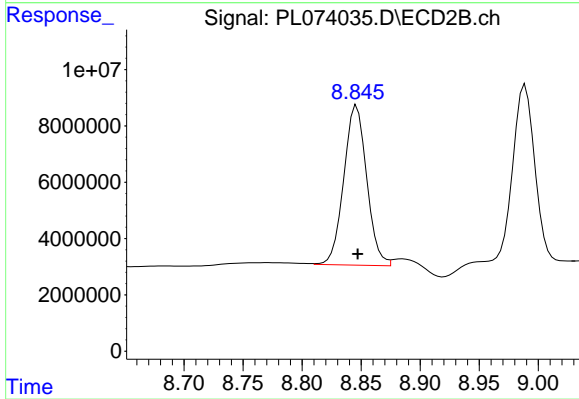
#13 Dieldrin

R.T.: 8.612 min
 Delta R.T.: 0.000 min
 Response: 98398099
 Conc: 49.07 ng/ml



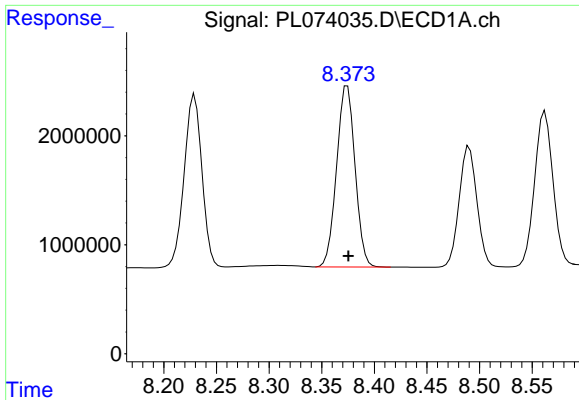
#14 Endrin

R.T.: 8.062 min
 Delta R.T.: -0.003 min
 Response: 18943386
 Conc: 46.63 ng/ml m



#14 Endrin

R.T.: 8.845 min
 Delta R.T.: -0.002 min
 Response: 77163718
 Conc: 45.56 ng/ml m



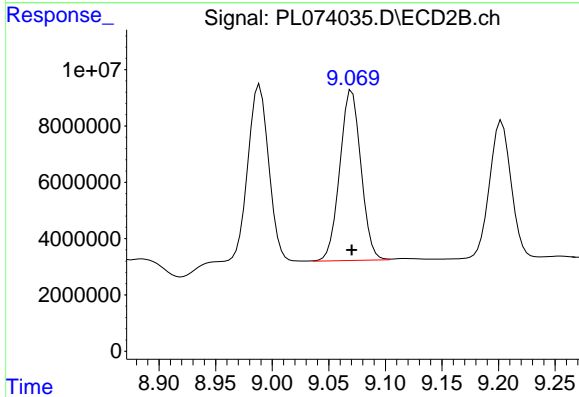
#15 Endosulfan II

R.T.: 8.374 min
 Delta R.T.: -0.001 min
 Response: 20290286
 Conc: 49.23 ng/ml

Instrument :
 ECD_L
 ClientSampleId :
 PB144061BS

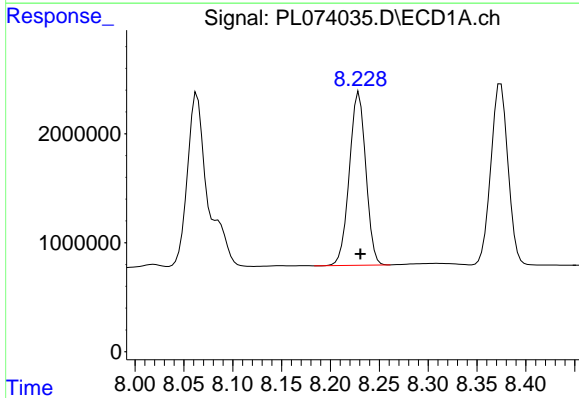
Manual Integrations
 APPROVED

Reviewed By :Abdul Mirza 04/18/2022
 Supervised By :mohammad ahmed 04/18/2022



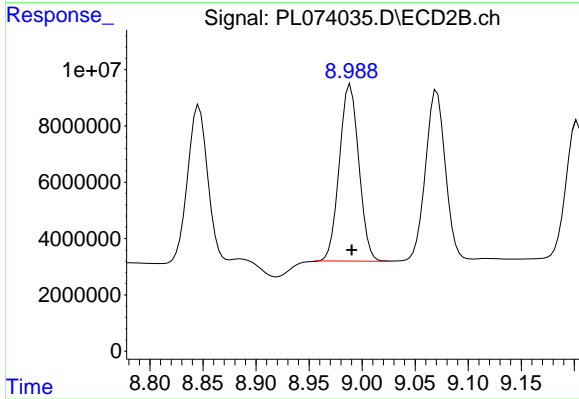
#15 Endosulfan II

R.T.: 9.069 min
 Delta R.T.: -0.001 min
 Response: 78755957
 Conc: 45.33 ng/ml m



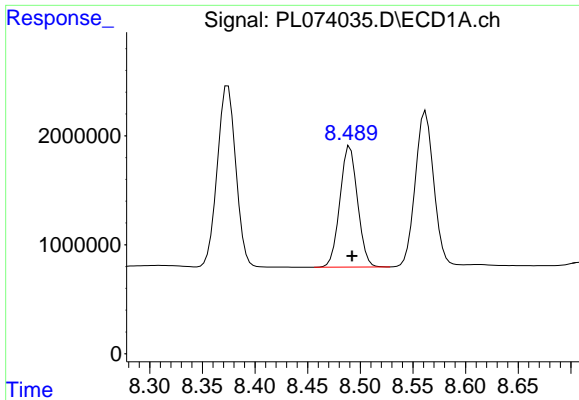
#16 4,4'-DDD

R.T.: 8.229 min
 Delta R.T.: -0.001 min
 Response: 18633659
 Conc: 57.70 ng/ml



#16 4,4'-DDD

R.T.: 8.988 min
 Delta R.T.: -0.002 min
 Response: 80178887
 Conc: 52.11 ng/ml m



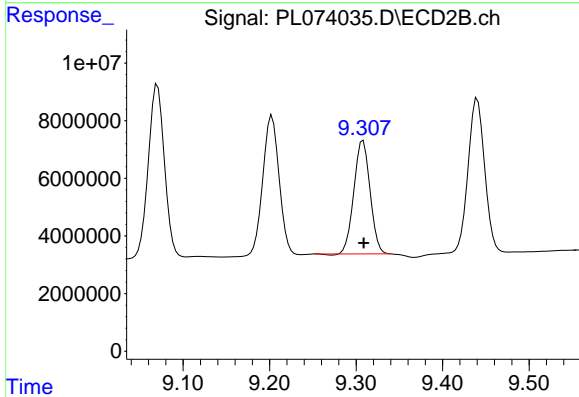
#17 4,4'-DDT

R.T.: 8.490 min
 Delta R.T.: -0.002 min
 Response: 12995378
 Conc: 35.16 ng/ml

Instrument :
 ECD_L
 ClientSampleId :
 PB144061BS

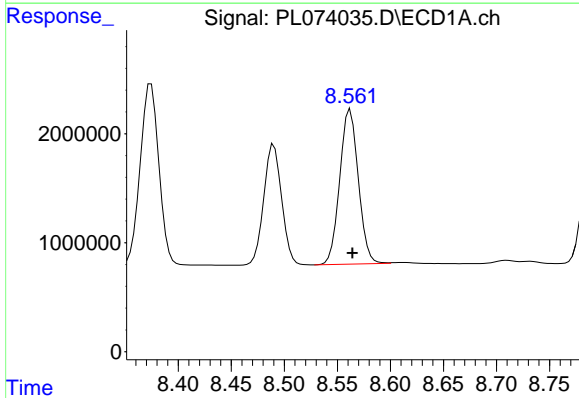
Manual Integrations
 APPROVED

Reviewed By :Abdul Mirza 04/18/2022
 Supervised By :mohammad ahmed 04/18/2022



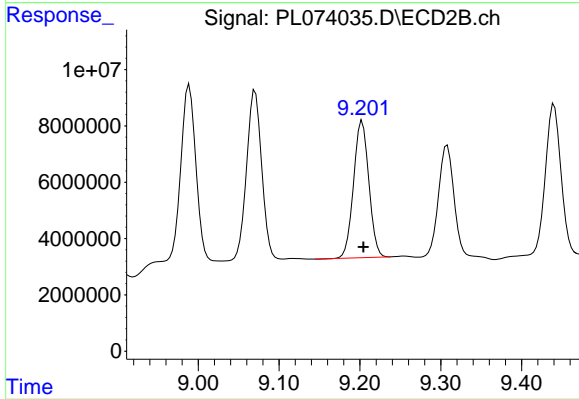
#17 4,4'-DDT

R.T.: 9.308 min
 Delta R.T.: 0.000 min
 Response: 51099703
 Conc: 28.83 ng/ml



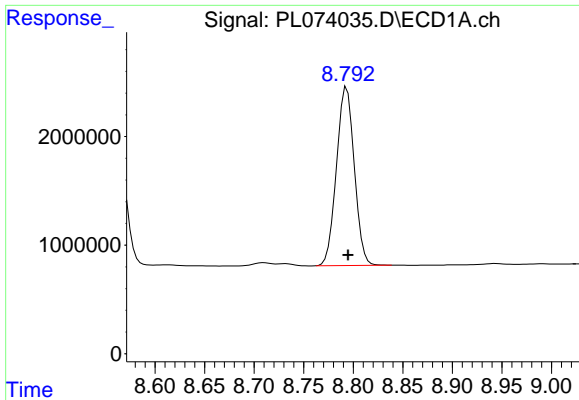
#18 Endrin aldehyde

R.T.: 8.562 min
 Delta R.T.: -0.002 min
 Response: 17267180
 Conc: 53.37 ng/ml



#18 Endrin aldehyde

R.T.: 9.203 min
 Delta R.T.: -0.002 min
 Response: 63872318
 Conc: 49.45 ng/ml

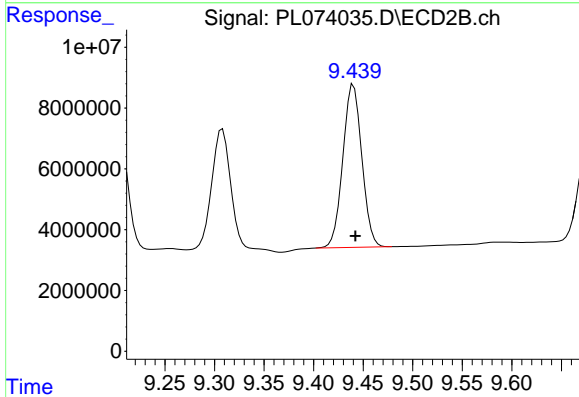


#19 Endosulfan Sulfate
 R.T.: 8.793 min
 Delta R.T.: -0.002 min
 Response: 20601727
 Conc: 48.25 ng/ml

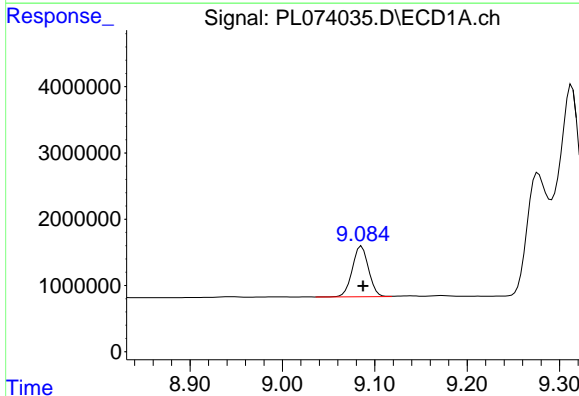
Instrument :
 ECD_L
 ClientSampleId :
 PB144061BS

Manual Integrations
 APPROVED

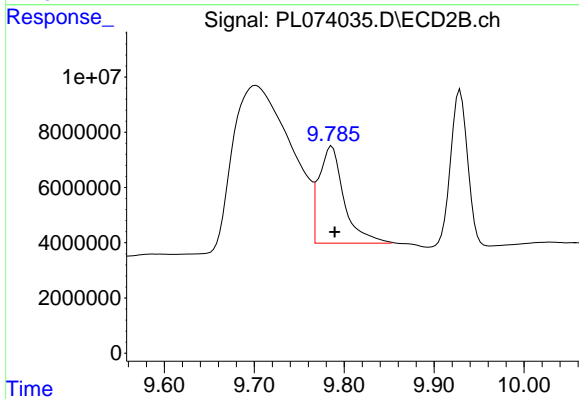
Reviewed By :Abdul Mirza 04/18/2022
 Supervised By :mohammad ahmed 04/18/2022



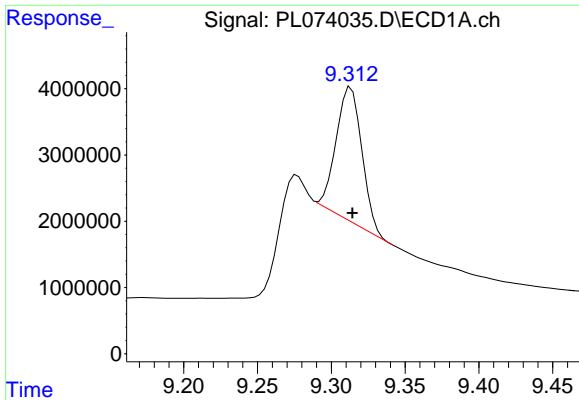
#19 Endosulfan Sulfate
 R.T.: 9.440 min
 Delta R.T.: -0.002 min
 Response: 71456741
 Conc: 42.93 ng/ml



#20 Methoxychlor
 R.T.: 9.086 min
 Delta R.T.: -0.002 min
 Response: 9311478
 Conc: 37.51 ng/ml



#20 Methoxychlor
 R.T.: 9.785 min
 Delta R.T.: -0.004 min
 Response: 66933609
 Conc: 69.59 ng/ml m



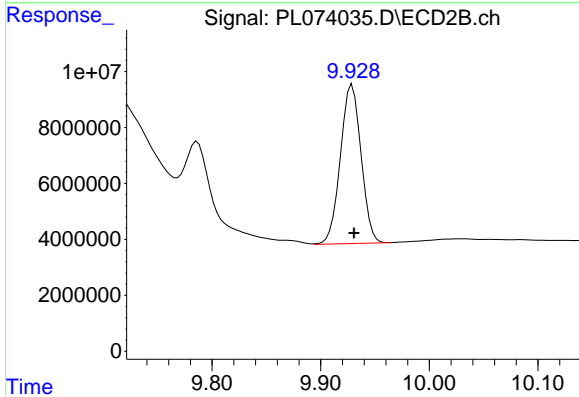
#21 Endrin ketone

R.T.: 9.312 min
 Delta R.T.: -0.002 min
 Response: 24359644
 Conc: 49.86 ng/ml

Instrument :
 ECD_L
 ClientSampleId :
 PB144061BS

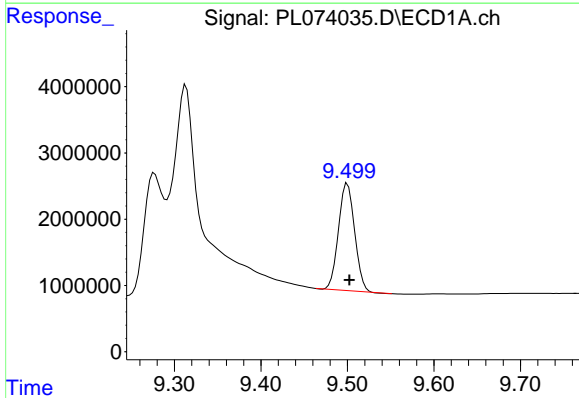
Manual Integrations
 APPROVED

Reviewed By :Abdul Mirza 04/18/2022
 Supervised By :mohammad ahmed 04/18/2022



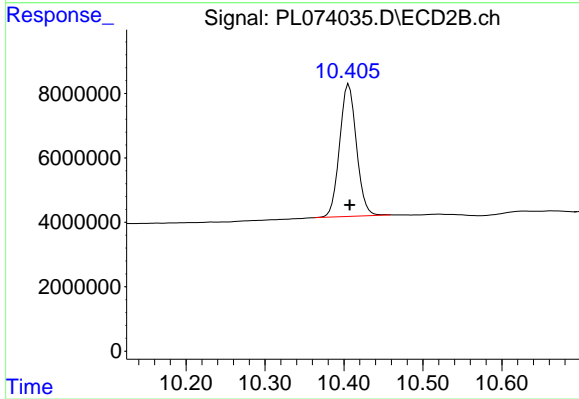
#21 Endrin ketone

R.T.: 9.929 min
 Delta R.T.: -0.002 min
 Response: 75235487
 Conc: 43.47 ng/ml



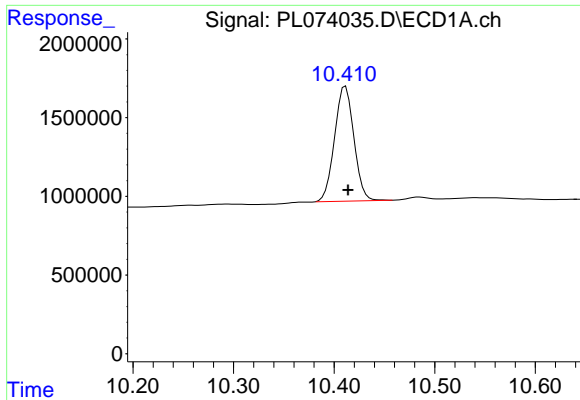
#22 Mirex

R.T.: 9.500 min
 Delta R.T.: -0.002 min
 Response: 20764444
 Conc: 44.52 ng/ml



#22 Mirex

R.T.: 10.406 min
 Delta R.T.: -0.001 min
 Response: 60858304
 Conc: 44.18 ng/ml

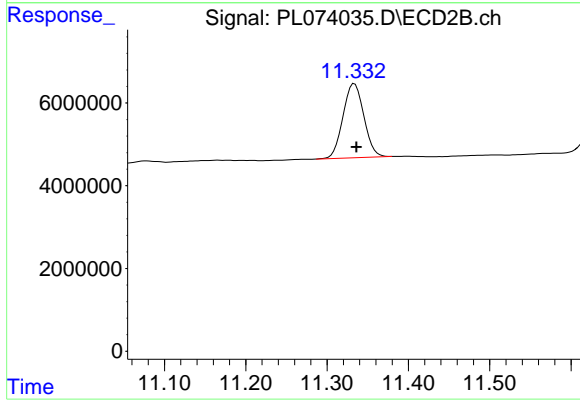


#28 Decachlorobiphenyl
R.T.: 10.411 min
Delta R.T.: -0.002 min
Response: 9722403
Conc: 18.70 ng/ml

Instrument :
ECD_L
ClientSampleId :
PB144061BS

Manual Integrations
APPROVED

Reviewed By :Abdul Mirza 04/18/2022
Supervised By :mohammad ahmed 04/18/2022



#28 Decachlorobiphenyl
R.T.: 11.334 min
Delta R.T.: -0.002 min
Response: 31874600
Conc: 18.05 ng/ml