

Data Path : Z:\pestpcbsrv\HPCHEM1\ECD_L\Data\PL041420\
 Data File : PL057988.D
 Signal(s) : Signal #1: ECD1A.ch Signal #2: ECD2B.ch
 Acq On : 14 Apr 2020 22:07
 Operator : AJ\MA
 Sample : L2230-55
 Misc :
 ALS Vial : 35 Sample Multiplier: 1

Instrument :
 ECD_L
ClientSampled :
 TP-2-3-4

Manual Integrations
APPROVED
 mohammad
 4/15/2020 3:31:52 PM

Integration File signal 1: autoint1.e
 Integration File signal 2: autoint2.e
 Quant Time: Apr 15 01:19:40 2020
 Quant Method : Z:\pestpcbsrv\HPCHEM1\ECD_L\methods\PL040320.M
 Quant Title : GC Extractables
 QLast Update : Sat Apr 04 06:41:11 2020
 Response via : Initial Calibration
 Integrator: ChemStation

Volume Inj. : 1 µl
 Signal #1 Phase : ZB-MR2 Signal #2 Phase: ZB-MR1
 Signal #1 Info : 30M x 0.32mm x0.2 Signal #2 Info : 30M x 0.32mm x0.5µm

Compound	RT#1	RT#2	Resp#1	Resp#2	ng/ml	ng/ml

System Monitoring Compounds						
1) SA Tetrachlo...	3.456	3.954	92629892	20814659	9.189m	9.591m
28) SA Decachlor...	8.202	8.976	302.9E6	80419238	29.382m	36.002m

Target Compounds

(f)=RT Delta > 1/2 Window (#)=Amounts differ by > 25% (m)=manual int.

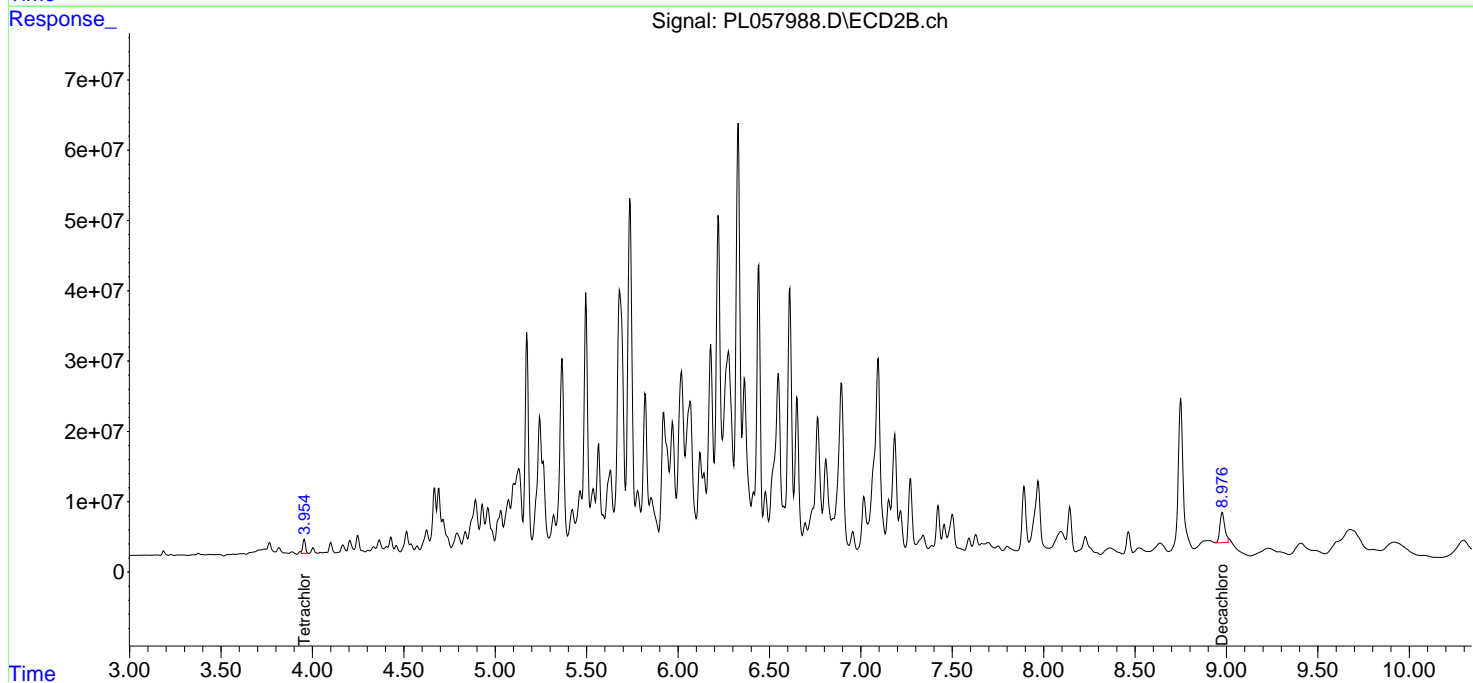
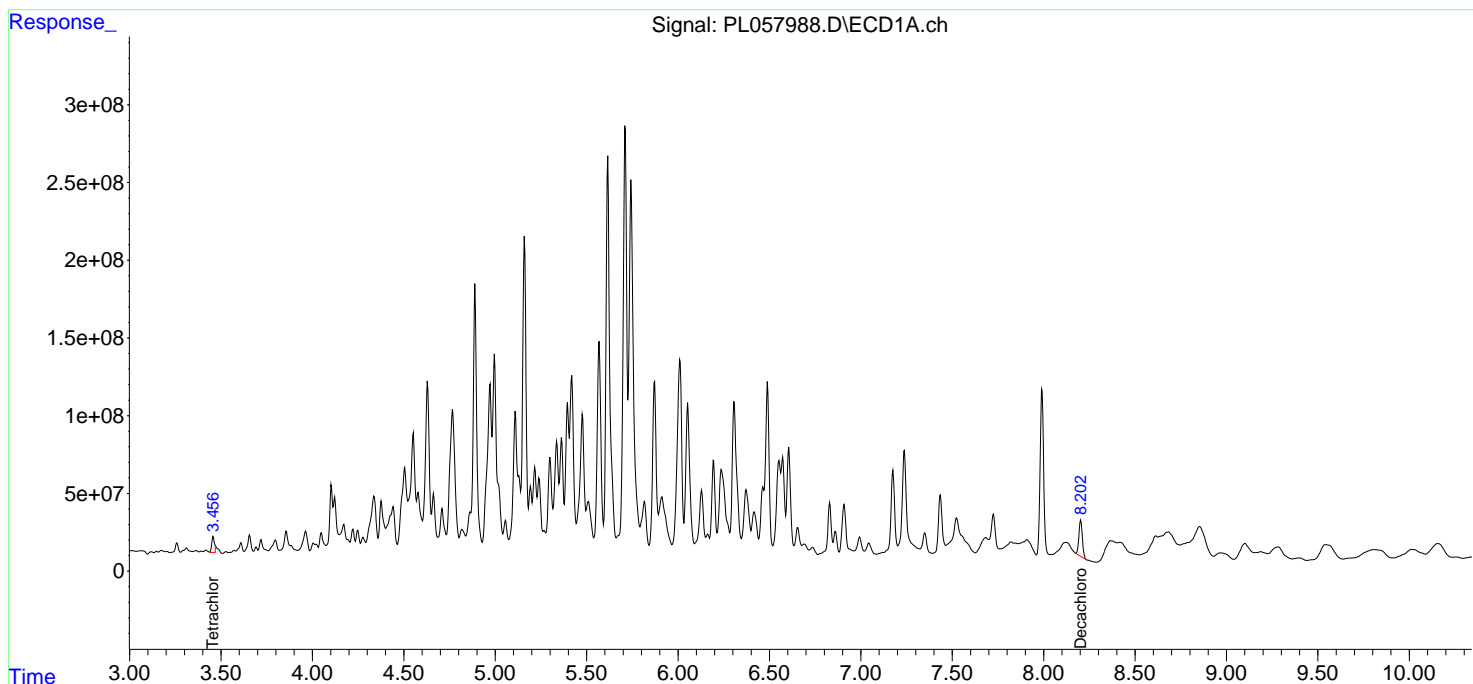
Data Path : Z:\pestpcbsrv\HPCHEM1\ECD_L\Data\PL041420\
 Data File : PL057988.D
 Signal(s) : Signal #1: ECD1A.ch Signal #2: ECD2B.ch
 Acq On : 14 Apr 2020 22:07
 Operator : AJ\MA
 Sample : L2230-55
 Misc :
 ALS Vial : 35 Sample Multiplier: 1

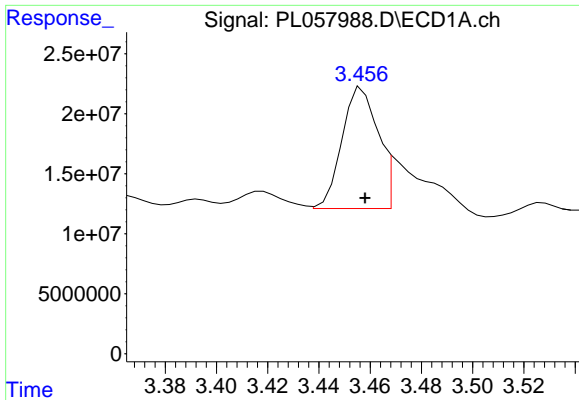
Instrument :
 ECD_L
ClientSampled :
 TP-2-3-4

Manual Integrations
APPROVED
 mohammad
 4/15/2020 3:31:52 PM

Integration File signal 1: autoint1.e
 Integration File signal 2: autoint2.e
 Quant Time: Apr 15 01:19:40 2020
 Quant Method : Z:\pestpcbsrv\HPCHEM1\ECD_L\methods\PL040320.M
 Quant Title : GC Extractables
 QLast Update : Sat Apr 04 06:41:11 2020
 Response via : Initial Calibration
 Integrator: ChemStation

Volume Inj. : 1 µl
 Signal #1 Phase : ZB-MR2 Signal #2 Phase: ZB-MR1
 Signal #1 Info : 30M x 0.32mm x0.2 Signal #2 Info : 30M x 0.32mm x0.5µm

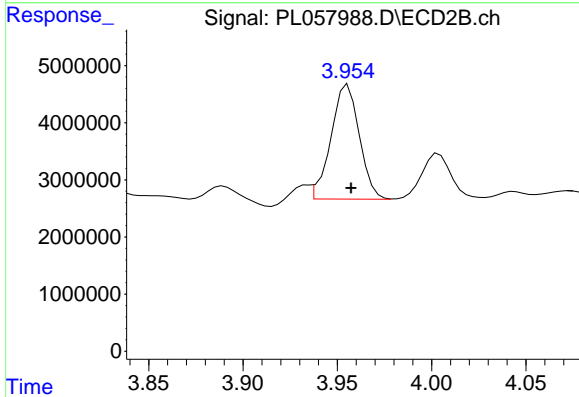




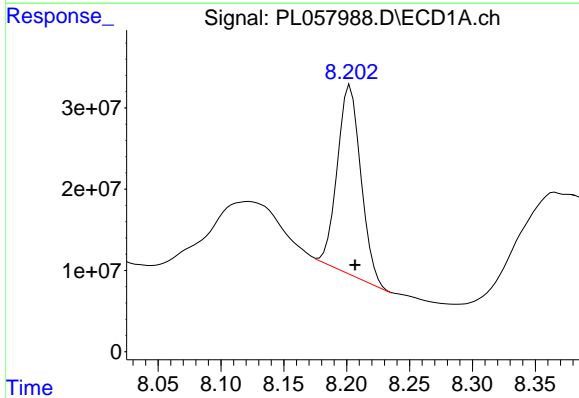
#1 Tetrachloro-m-xylene
 R.T.: 3.456 min
 Delta R.T.: -0.002 min
 Response: 92629892
 Conc: 9.19 ng/ml m

Instrument :
 ECD_L
 ClientSampled :
 TP-2-3-4

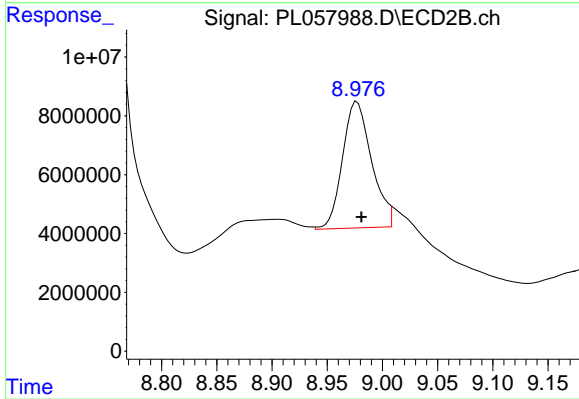
Manual Integrations
 APPROVED
 mohammad
 4/15/2020 3:31:52 PM



#1 Tetrachloro-m-xylene
 R.T.: 3.954 min
 Delta R.T.: -0.003 min
 Response: 20814659
 Conc: 9.59 ng/ml m



#28 Decachlorobiphenyl
 R.T.: 8.202 min
 Delta R.T.: -0.005 min
 Response: 302884499
 Conc: 29.38 ng/ml m



#28 Decachlorobiphenyl
 R.T.: 8.976 min
 Delta R.T.: -0.005 min
 Response: 80419238
 Conc: 36.00 ng/ml m