

Data Path : Z:\pestpcbsrv\HPCHEM1\ECD_L\Data\PL041421\
 Data File : PL066111.D
 Signal(s) : Signal #1: ECD1A.ch Signal #2: ECD2B.ch
 Acq On : 14 Apr 2021 12:10
 Operator : AR\AJ
 Sample : PTOXICC1000
 Misc :
 ALS Vial : 15 Sample Multiplier: 1

Instrument :
 ECD_L
 ClientSampleId :
 PTOXICC1000

Integration File signal 1: autoint1.e
 Integration File signal 2: autoint2.e
 Quant Time: Apr 19 07:50:22 2021
 Quant Method : Z:\pestpcbsrv\HPCHEM1\ECD_L\methods\LTX041421.M
 Quant Title : GC Extractables
 QLast Update : Mon Apr 19 07:49:54 2021
 Response via : Initial Calibration
 Integrator: ChemStation

Volume Inj. : 2 µl
 Signal #1 Phase : Rtx-CLPesticide 1 Signal #2 Phase: Rtx-CLPesticide 1
 Signal #1 Info : 30M x 0.32mm x0.3 Signal #2 Info : 30M x 0.32mm x 0.25µm

Compound	RT#1	RT#2	Resp#1	Resp#2	ng/ml	ng/ml

System Monitoring Compounds						
1) SA Tetrachlo...	3.445	4.153	231.7E6	389.9E6	96.089	100.949
7) SA Decachlor...	8.169	9.351	214.5E6	299.6E6	93.699	95.950
Target Compounds						
2) Toxaphene-1	5.681	6.788	22994896	30002407	919.912	1015.203
3) Toxaphene-2	5.838	7.303	22773388	29372691	934.297	968.431
4) Toxaphene-3	6.275	7.378	59030034	55056152	949.557	962.692
5) Toxaphene-4	6.871	7.468	45836005	52705100	985.767	969.781
6) Toxaphene-5	7.002	7.889	57082784	55382279	958.301	984.452

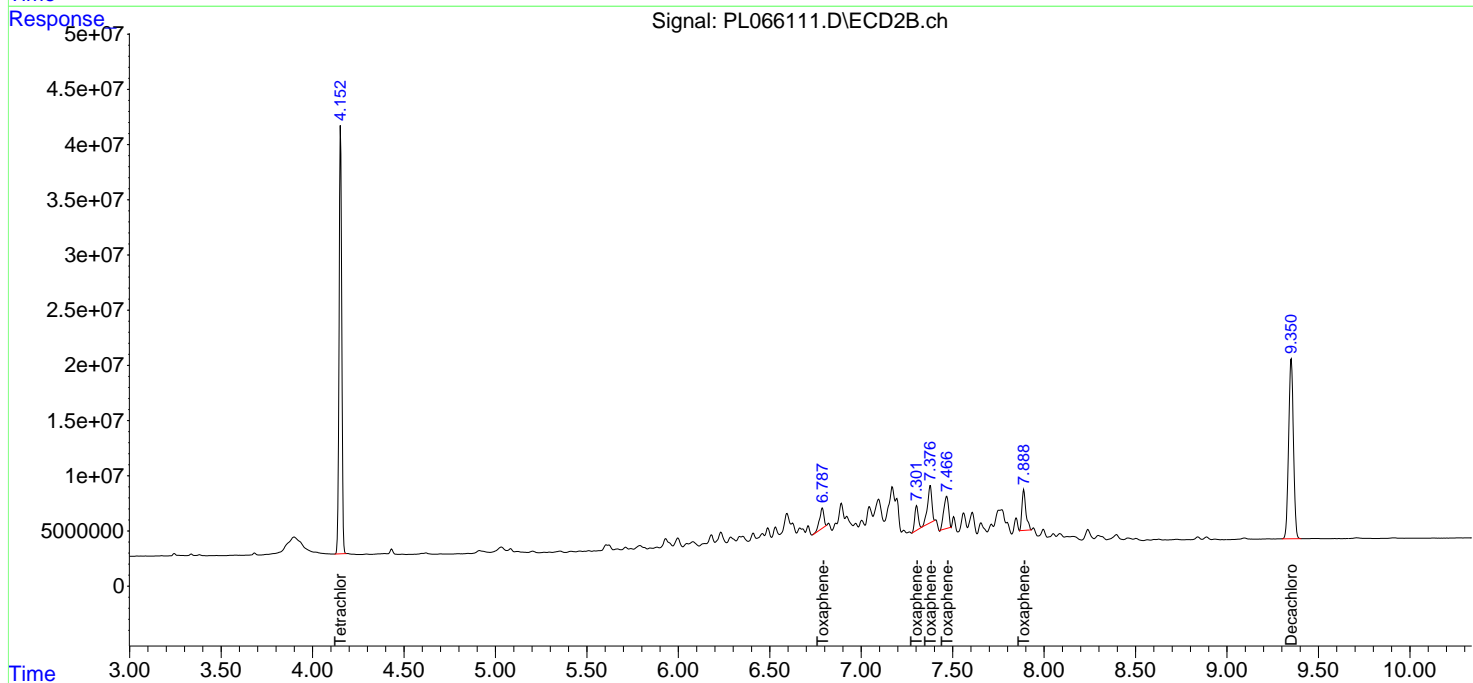
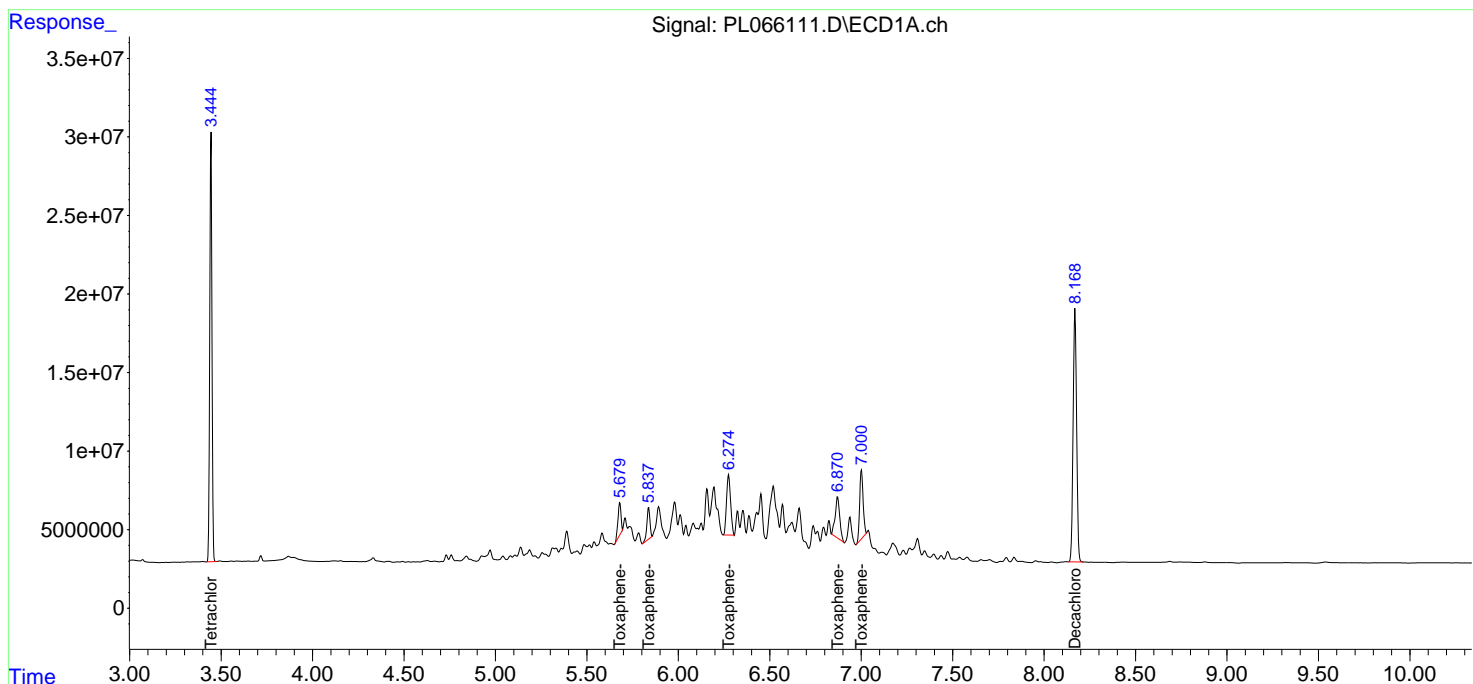
(f)=RT Delta > 1/2 Window (#)=Amounts differ by > 25% (m)=manual int.

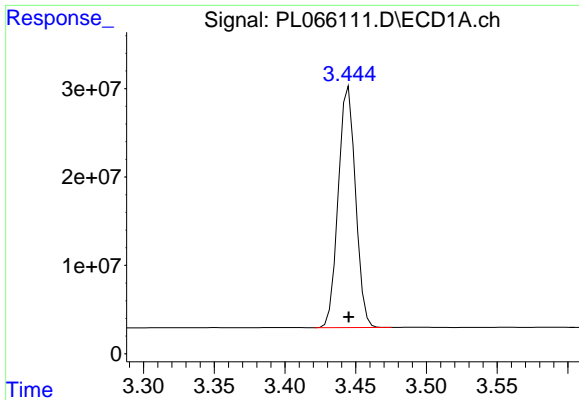
Data Path : Z:\pestpcbsrv\HPCHEM1\ECD_L\Data\PL041421\
 Data File : PL066111.D
 Signal(s) : Signal #1: ECD1A.ch Signal #2: ECD2B.ch
 Acq On : 14 Apr 2021 12:10
 Operator : AR\AJ
 Sample : PTOXICC1000
 Misc :
 ALS Vial : 15 Sample Multiplier: 1

Instrument :
 ECD_L
 ClientSampled :
 PTOXICC1000

Integration File signal 1: autoint1.e
 Integration File signal 2: autoint2.e
 Quant Time: Apr 19 07:50:22 2021
 Quant Method : Z:\pestpcbsrv\HPCHEM1\ECD_L\methods\LTX041421.M
 Quant Title : GC Extractables
 QLast Update : Mon Apr 19 07:49:54 2021
 Response via : Initial Calibration
 Integrator: ChemStation

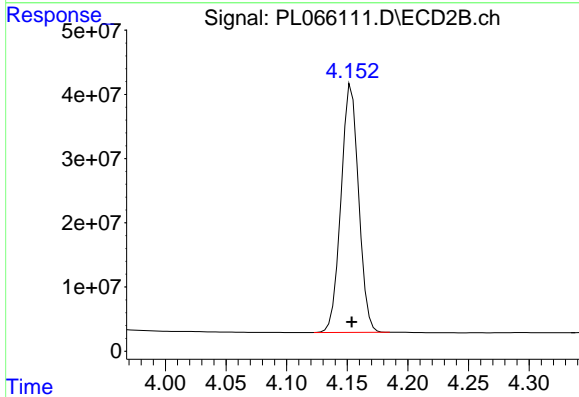
Volume Inj. : 2 µl
 Signal #1 Phase : Rtx-CLPesticide 1 Signal #2 Phase: Rtx-CLPesticide 1
 Signal #1 Info : 30M x 0.32mm x0.3 Signal #2 Info : 30M x 0.32mm x 0.25µm



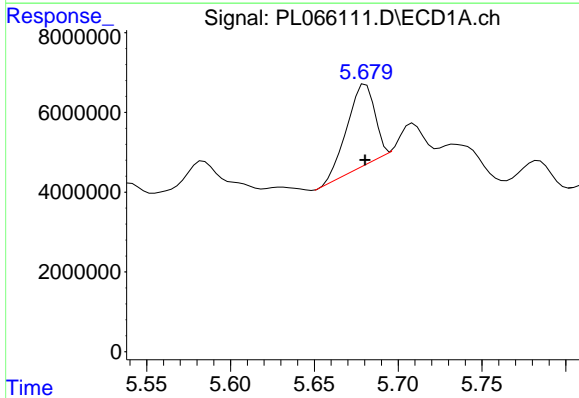


#1 Tetrachloro-m-xylene
 R.T.: 3.445 min
 Delta R.T.: 0.000 min
 Response: 231724019
 Conc: 96.09 ng/ml

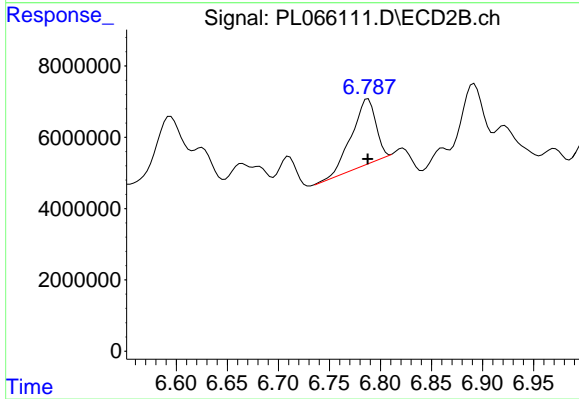
Instrument :
 ECD_L
 ClientSampleId :
 PTOXICC1000



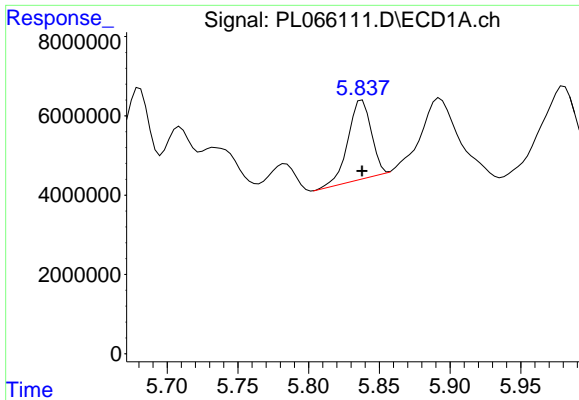
#1 Tetrachloro-m-xylene
 R.T.: 4.153 min
 Delta R.T.: 0.000 min
 Response: 389921676
 Conc: 100.95 ng/ml



#2 Toxaphene-1
 R.T.: 5.681 min
 Delta R.T.: 0.000 min
 Response: 22994896
 Conc: 919.91 ng/ml



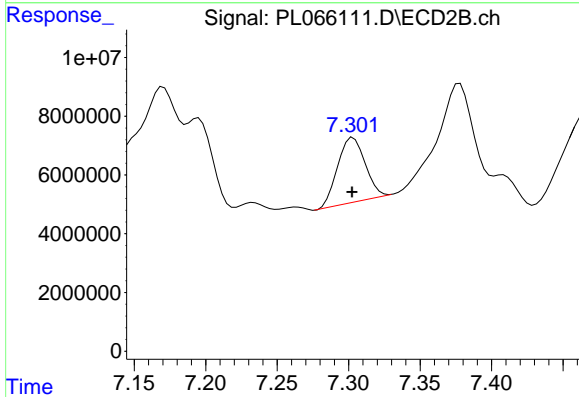
#2 Toxaphene-1
 R.T.: 6.788 min
 Delta R.T.: 0.000 min
 Response: 30002407
 Conc: 1015.20 ng/ml



#3 Toxaphene-2

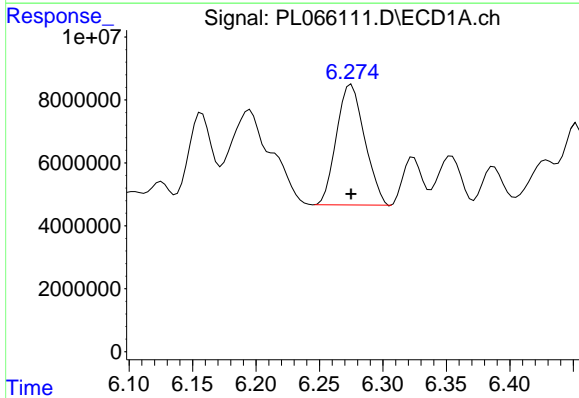
R.T.: 5.838 min
 Delta R.T.: 0.000 min
 Response: 22773388
 Conc: 934.30 ng/ml

Instrument :
 ECD_L
 ClientSampleId :
 PTOXICC1000



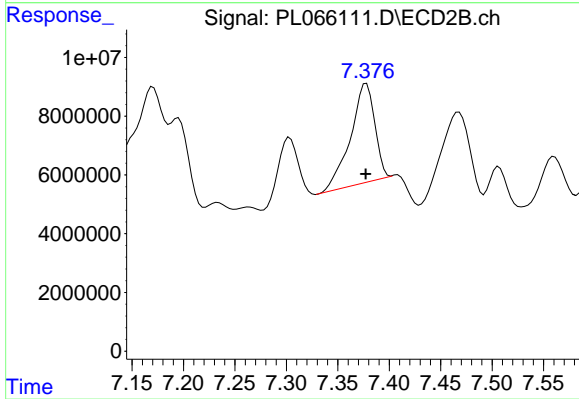
#3 Toxaphene-2

R.T.: 7.303 min
 Delta R.T.: 0.001 min
 Response: 29372691
 Conc: 968.43 ng/ml



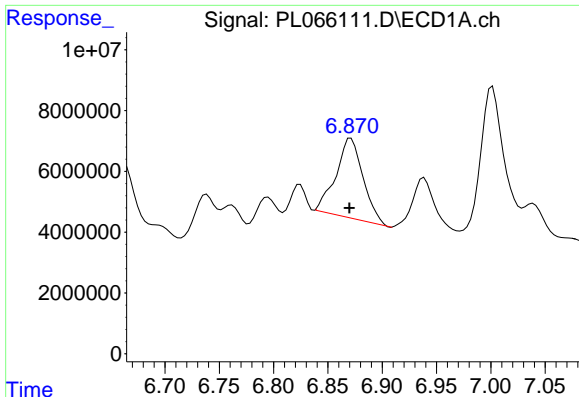
#4 Toxaphene-3

R.T.: 6.275 min
 Delta R.T.: 0.000 min
 Response: 59030034
 Conc: 949.56 ng/ml



#4 Toxaphene-3

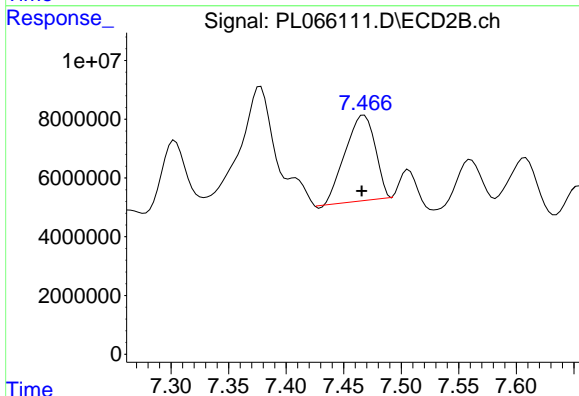
R.T.: 7.378 min
 Delta R.T.: 0.000 min
 Response: 55056152
 Conc: 962.69 ng/ml



#5 Toxaphene-4

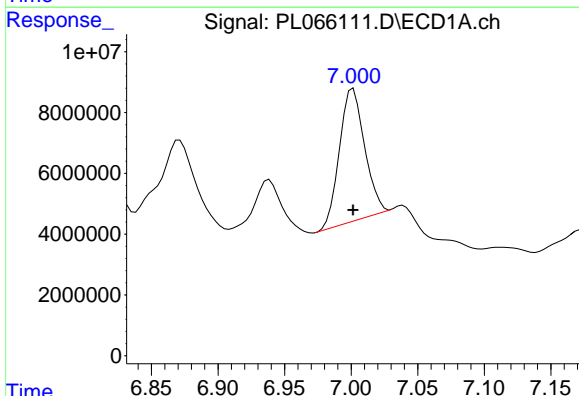
R.T.: 6.871 min
Delta R.T.: 0.001 min
Response: 45836005
Conc: 985.77 ng/ml

Instrument :
ECD_L
ClientSampleId :
PTOXICC1000



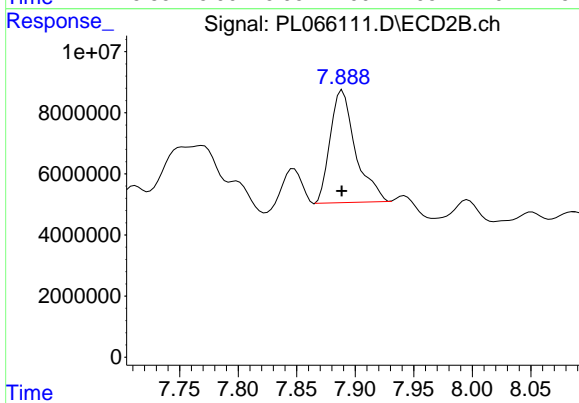
#5 Toxaphene-4

R.T.: 7.468 min
Delta R.T.: 0.002 min
Response: 52705100
Conc: 969.78 ng/ml



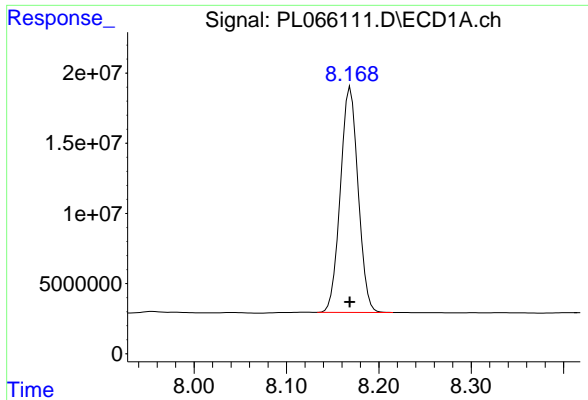
#6 Toxaphene-5

R.T.: 7.002 min
Delta R.T.: 0.000 min
Response: 57082784
Conc: 958.30 ng/ml



#6 Toxaphene-5

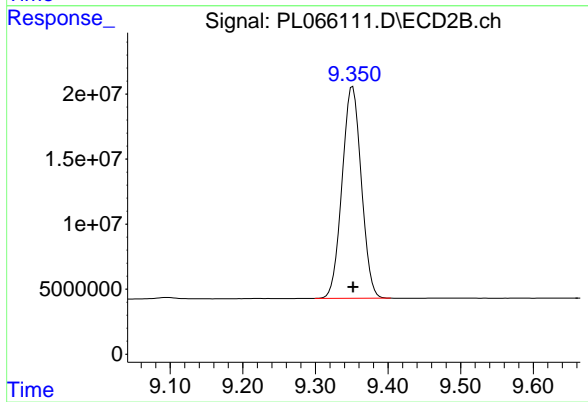
R.T.: 7.889 min
Delta R.T.: 0.000 min
Response: 55382279
Conc: 984.45 ng/ml



#7 Decachlorobiphenyl

R.T.: 8.169 min
Delta R.T.: 0.000 min
Response: 214450080
Conc: 93.70 ng/ml

Instrument :
ECD_L
ClientSampleId :
PTOXICC1000



#7 Decachlorobiphenyl

R.T.: 9.351 min
Delta R.T.: 0.000 min
Response: 299570575
Conc: 95.95 ng/ml